



Waitakere  
**WELLBEING**  
COLLABORATION PROJECT

---

Council • Community • Government – Working together

# An Introduction

# The Collaboration Project in a Nutshell

- It is an initiative to facilitate government, community and Waitakere City Council to collectively identify collaborative focus areas and work together on them

## How

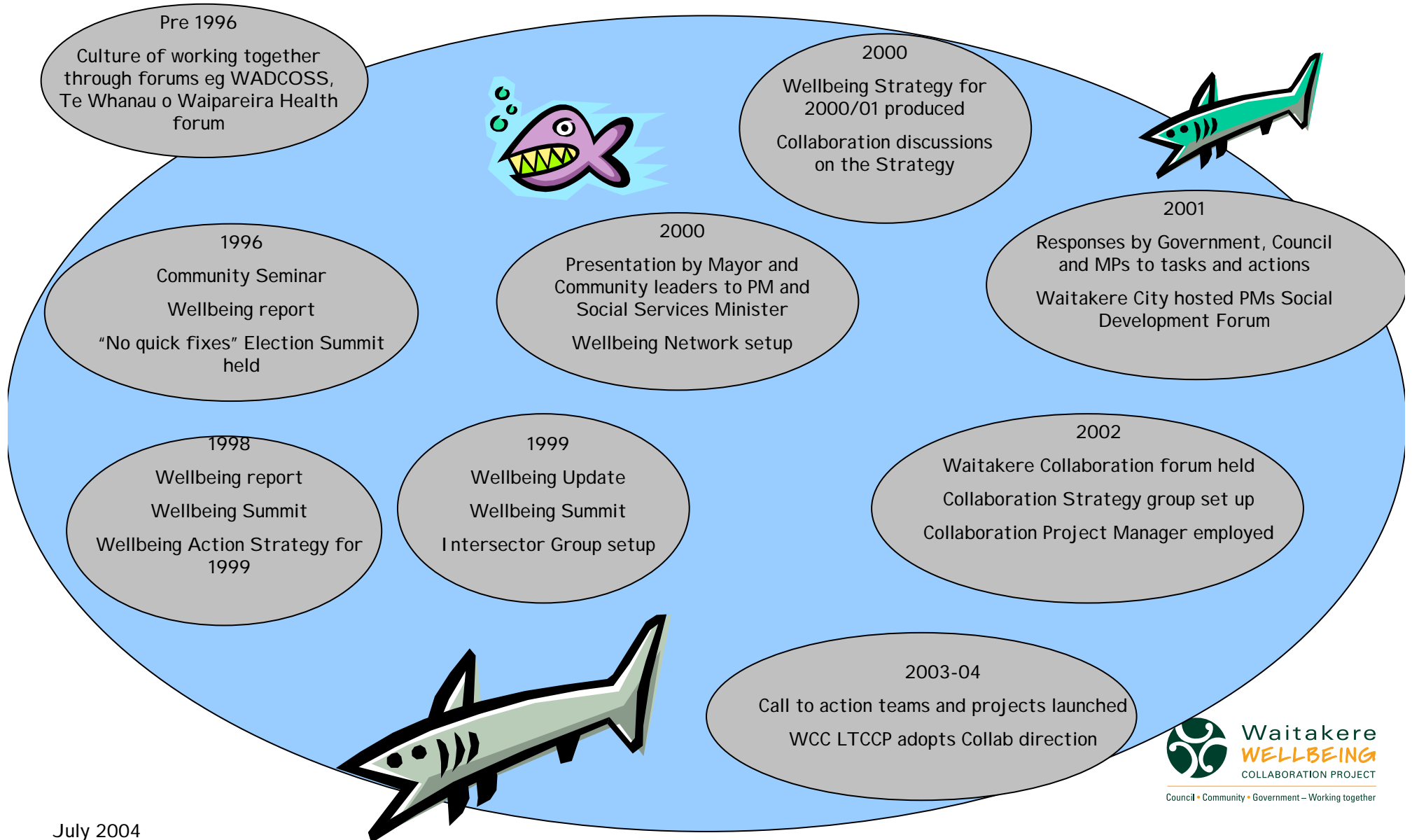
- identifying agreed fertile focus areas
- facilitating joint projects
- better co-ordinated and cohesive planning

# The Waitakere Wellbeing Collaboration Project

- Resourcing
  - Community Employment Group
  - Ministry of Social Development
  - Waitakere City Council
  - Ministry of Health
  - Housing New Zealand
  - Waitemata District Health Board
  - Child Youth and Family
  - Te Puni Kokiri

# The pathway to here

## Snapshot of Key Wellbeing Process Events/Actions 1996-2004

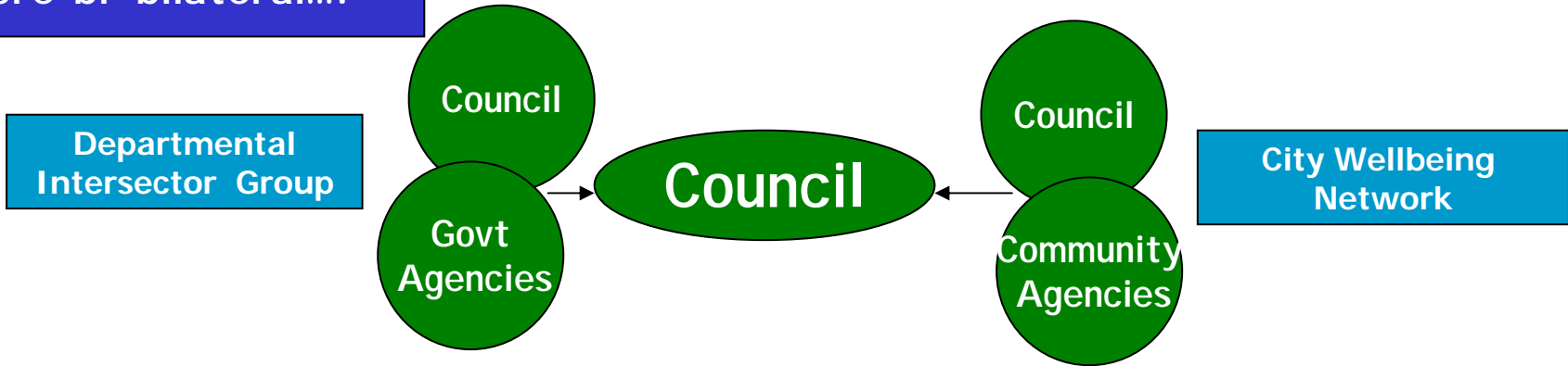


# "Towards Wellbeing collaboration in Waitakere" - from a **one** to **three** way process

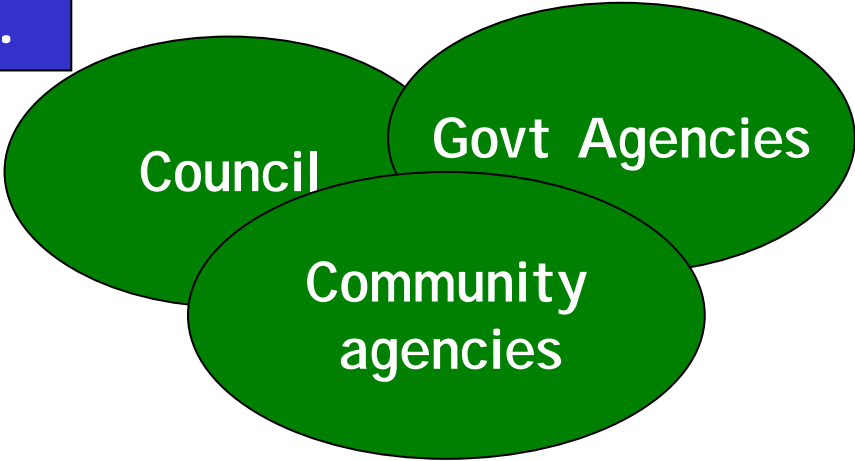
## 1. With some consultation



## 2. More bi-bilateral...



## 3. Three way...



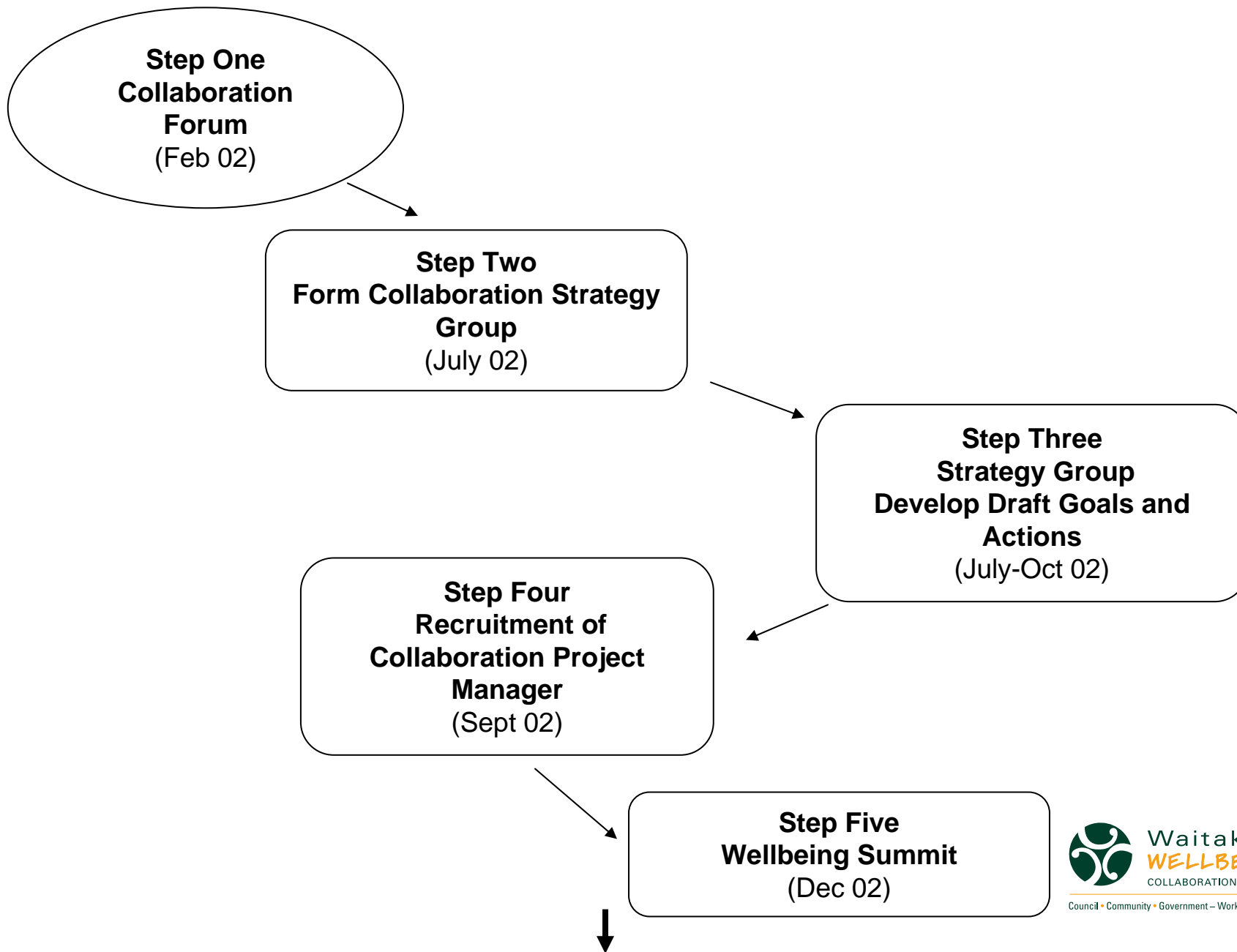
# WAITAKERE WELLBEING COLLABORATION PROCESS



# Waitakere Collaboration project participants include

- Community Employment Group
- Ministry of Health
- Ministry of Social Development
- Safe Waitakere
- Waitemata District Health Board
- WADCROSS
- Te Taumata Rununga
- WEA
- Pacific Island Advisory Board
- Housing New Zealand
- Ministry of Education
- WAVES
- Ministry Of Economic Development
- Shared Vision
- Child Youth and Family
- Healthlink
- Tertiary Education Commission
- Enterprise Waitakere

# “Towards Wellbeing in Waitakere - THE WAY FORWARD IN 2002”



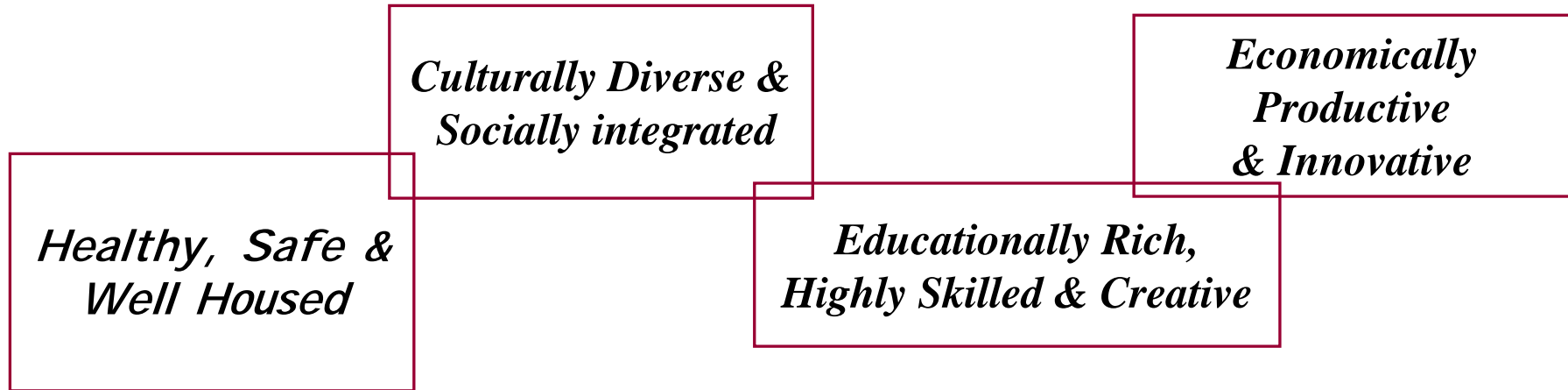
# Waitakere Wellbeing Collaboration Project

## Criteria for “Calls to Action”

- Answers a need or problem that has been identified as a priority.
- Achievable within 3 years
- Will make a measurable improvement to Wellbeing
- Represents a Call to Action – will motivate and strike a chord with the community
- Simple and easily understood by all parties
- Doesn't reinvent the wheel – focus on areas where there are already current initiatives underway and added value can be achieved through collaboration
- Start simple so that we can learn and practice collaboration process
- Multi-agency involvement – requires collaboration to achieve

# Strategic Outcomes & Focus Areas for 2003 to 2005

## Strategic Outcomes



## Focus areas



Waitakere Wellbeing Collaboration Project  
**Calls to Action for 2003-2005**

**Every child has access to a  
quality preschool education**

**Violence against children  
& women is reduced**

**Families give their  
children a great start**

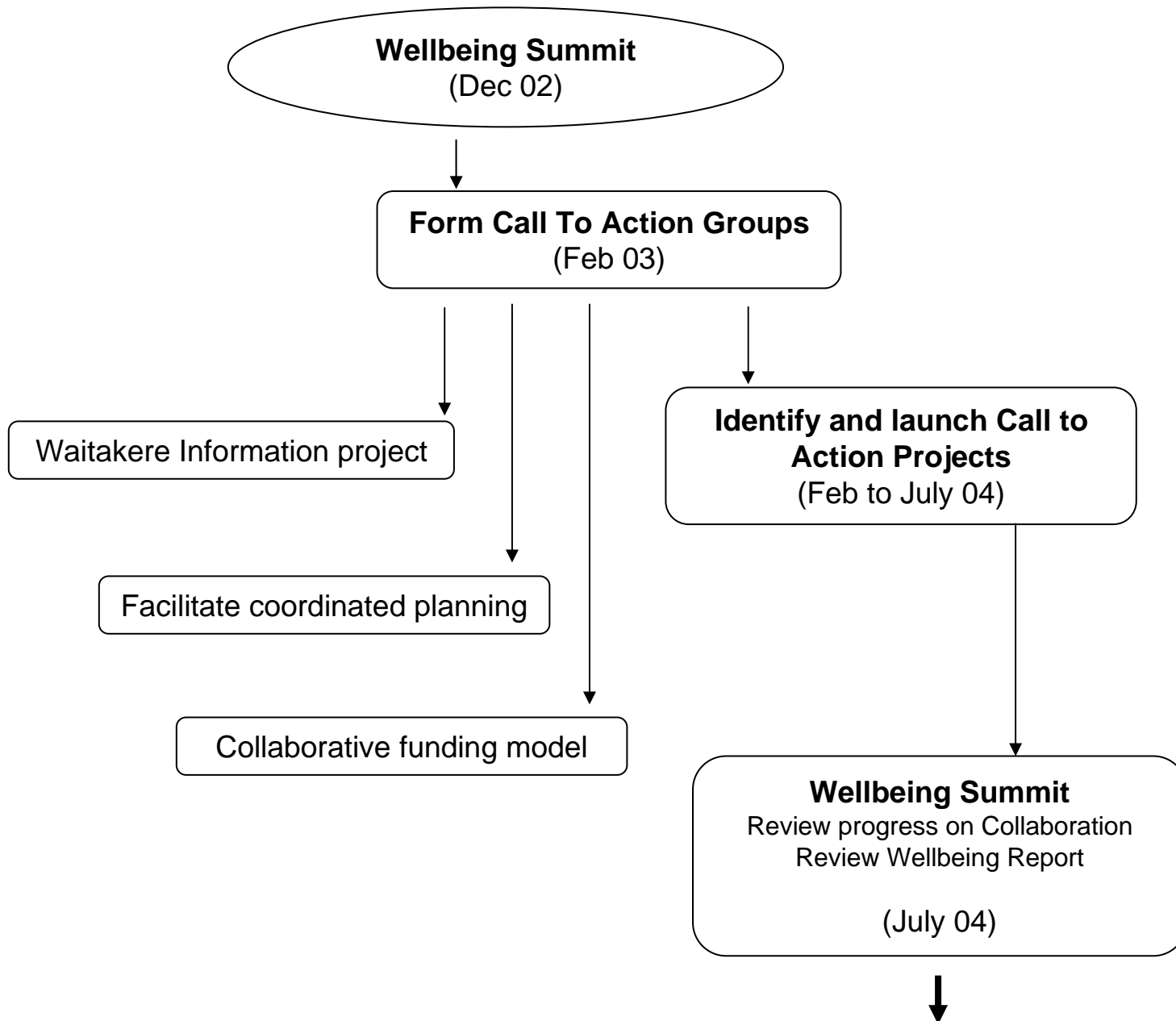
**Every new migrant or refugee to  
Waitakere City settles successfully**

**Schools and Communities  
Working together**

**Every student in Waitakere  
leaves school with a plan**

**Develop a culture of inclusion  
that fully includes all people in  
Waitakere City**

# “Towards Wellbeing in Waitakere - THE WAY FORWARD IN 2003/04”



# Wellbeing Collaborative Projects

5 completed, 18 in progress and more in development or awaiting resources

## Projects include

**Early Childhood Education Forum**

*Early Childhood Education open day*

**Parenting Information Resources**

*School Community relationship promotion*

**Inclusion checklist**

*NOW Settlement services*

**Waitakere Ethnic Board setup**

*Gateway /Youthworks*

**Local Employment Information / DVD**

**Integrated school to work transition pathway**

**Early childhood employment initiative**

**Toddlers Day Out**

*Waitakere Job Fair*

*Formation of GREAT START, a Strategic Action group for under 5's*

*Health Sector training in family violence*

*Family Violence awareness training for Home visitors*

*Promotion on the importance of the first 5 years*

**Parental mental health services support**

**Alternatives to physical violence campaign**

**Celebration of our Children**

**Targetted Domestic Violence wraparound service**

**Locality based project focussed on under 5's**

# Collaboration Information & Planning Projects

## WOSSIP (Waitakere Online Social Services Information Project)

- Part of the development of WaitakereOnline (portal project)
  - Beta Launch phase 1 : May 04
  - Formal Launch July 04
- Collaboration material
  - Database of community organisations collated by CAB's, Child Youth and Family, WADCOSS and others
  - List of links to local social services data and research
  - Acronym Directory
  - List of links to useful Strategic and Business Plans
  - Meetings calendar, Noticeboard and discussion area (with WADCOSS)

# Collaboration Information & Planning Projects

## Waitakere Wellbeing Report 04

- Produced under the auspices of the Collaboration Strategy group
- Budget of \$25,000 (WCC)
- Produced in time for Wellbeing Summit
- Includes quantitative data, interviews and maps

### Report Objectives

- § Provide a snapshot and comparative study of wellbeing in Waitakere
- § To inform the consideration of the effectiveness of our interventions
- § Check have we picked the right focus areas for collaborative effort?
- § Produce in a process & disseminate in a form that maximises uptake,  
ie the understanding of the information,  
the distillation of knowledge &  
promotes its utilisation in business planning

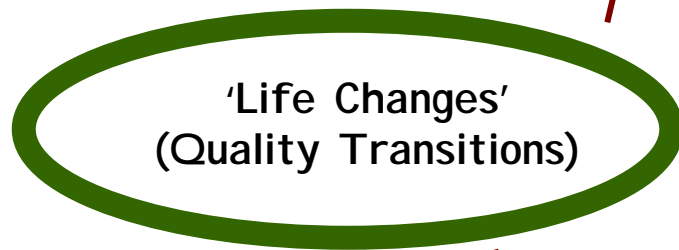
# Collaboration Information & Planning Projects

## Wellbeing Summit 2004

- Organised collaboratively by Collaboration Strategy Group
- Objectives
  - Update on wellbeing in Waitakere & review of recent reports
  - Identify / confirm key areas for attention
  - Confirm Collaboration Project direction
  - What other initiatives / opportunities?
- Two half days planned in July and August
  - Day 1: Information and review,
  - Day 2: Where to from here

# Waitakere Wellbeing Collaboration Project

*Every new migrant or refugee to  
Waitakere City settles successfully*



*Every student in Waitakere  
leaves school with a plan*

Waitakere Ethnic Board setup  
Completed

NOW Migrant Settlement service setup  
In development

Driver Licensing Campaign  
In action

Integrated approach to ESOL  
In action

Setup Migrant Guide Editorial Board  
In action

Circuit Breaker  
In action

Integrated school to work  
transition pathway  
In action

Gateway /Youthworks  
In action      In action

Local trade Employment Information

(DVD & Job fair)  
In action      In action



Council • Community • Government – Working together

# Waitakere Wellbeing Collaboration Project

## Early Childhood Education Forum

Early childhood educators networking setup Completed

Early Childhood Education open day In action

Waitakere early childhood education strategy In action

Early childhood employment initiative On hold

*Every child has access to a quality preschool education*

*Schools and Communities Working together*

'Great Start' (0-8)

*Families give their children a great start*

Promote and celebrate Waitakere city learning and schools (WEST) On hold

Best practice school-community relationship promotion (WEST)

On hold

Parenting Information Resources Project

On hold



Council • Community • Government – Working together

# Waitakere Wellbeing Collaboration Project

Formation of GREAT START, a Strategic Action group for under 5's  
Maori Providers network  
Pacific caucus setup  
Promotion on the importance of the first 5 years  
Alternatives to physical violence campaign (SKIP)  
Celebration of our Children  
Locality based project focussed on under 5's  
Support for mental wellbeing of parents

In action

In development

In action

In action

In development

In action

On hold

In development

'Great Start' (0-8)

'Safe Families'

**Violence against children  
& women is reduced**

Family Violence awareness training for Home visitors

In development

Set up a multi agency response to repeat Family Violence

In development



Council • Community • Government – Working together

# Waitakere Wellbeing Collaboration Project

**Develop a culture of inclusion  
that fully includes all people in  
Waitakere City**

**Inclusion checklist**

Completed

**Development of a  
Culture of Inclusion Charter**

In action

**Inclusion checklist communication and  
monitoring of uptake**

In action



## Waitakere Wellbeing Collaboration Project Towards Wellbeing in Waitakere Getting It. Together.

COMMUNITY ORGANISATIONS

**3-way focus on joint projects**

CENTRAL GOVERNMENT    WAITAKERE CITY COUNCIL

**Nāu te rourou nāku te rourou kia ora te iwi.**

With my food basket and your food basket our guests will be sustained.




growth ↗ environment ↗ business ↗ economy ↗ trust ↗ vision ↗ desire



Through a series of Wellbeing reports and summits, Waitakere has developed a strong culture of collaboration leading to the development of the Waitakere Wellbeing Collaboration Project.

The partners include:

## Waitakere Wellbeing Collaborative Calls to Action for 2003 - 2005

**Wellbeing Summit**

WAITAKERE GOVERNMENT INTERSECTOR GROUP    COLLABORATION STRATEGY GROUP    WAITAKERE COMMUNITY WELLBEING NETWORK

- Schools and communities working together
- Great Start Waitakere Te Korowai Manaaki
- Families give their children a great start
- Violence against children and women reduced
- Every new migrant and refugee to Waitakere City settles successfully
- Develop a culture of inclusion that fully includes all people in Waitakere City
- Every child has access to quality preschool education
- Every student in Waitakere leaves school with a plan

↗ treaty ↗ prosperity ↗ partnership ↗ leadership ↗ heritage ↗ culture



At the December 2002 Wellbeing Summit, over 70 different community and agency partners adopted the Calls to Action, each to be progressed through collaborative multiparty project teams.

**For More Details**  
Mark Allen  
Waitakere Wellbeing Collaboration Project Manager  
Ph: 09 836 8000 ext: 8813  
Mob: 025 230 7862  
mark.allen@waitakere.govt.nz



## Demand-led Approach

The Waitakere Employment and Skills Project has as one of its goals that every student leaves school with a plan. It is a demand-led approach that focuses on employer needs and how they're met with available labour. This approach emphasises the need for clear knowledge of current and future industry requirements. There is also an emphasis on upskilling current employees as well as those currently or potentially unemployed. The emphasis is on on-the-job training and clear links between education and industry.

Every student in Waitakere leaves school with a plan



- The key actions for achieving this will be:
- "YouthWorks" Waitakere funded by Ministry of Economic Development
    - ➔ A targeted information programme to raise students' awareness of local job opportunities
    - ➔ Industry Cadetship leading to Apprenticeships
    - ➔ Career Planning
  - A collaborative approach to the Gateway programme
  - An integrated transition pathway
  - A Waitakere job fair.
- Local government, social sector agencies, community organisations and other groups are collaborating on the project which also links into the Waitakere City Council's Wellbeing Strategy and the Mayors Taskforce for Jobs.

➤ accountability ➤ lifestyles ➤ education ➤ inclusion ➤ sharing ➤ gov



### For More Details

**Barry Fisk**  
Regional Commissioner  
Work & Income  
Auckland  
Ph: 09 916 1787  
Fax: 09 912 6866  
barry.fisk@msd.govt.nz

**John Wadsworth**  
Manager  
Industry and Skill Development  
Enterprise Waitakere  
Ph: 09 916 1787  
Fax: 09 837 1877  
john@enterpriseitakere.co.nz



## Each of us is responsible for what the next generation inherits

Start with where you are

Choose a direction

**JUST DO IT!**

You don't have to have it all planned out

Try new things

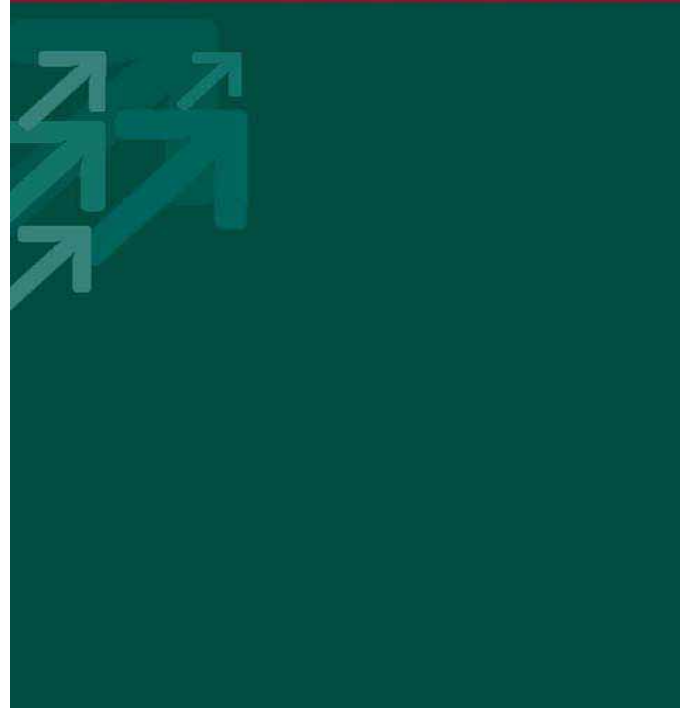
Take risks

Be willing to make mistakes

Seize opportunities

**SHARE YOUR PASSION**

➤ training ➤ caring ➤ knowledge ➤ sharing ➤ planning ➤ growth ➤ er



Council • Community • Government – Working together

# Contact details

*Mark Allen*

Collaboration Project Manager

Phone (09) 836 8000 extn 8813

Mobile 021 378 791

Email [mark.allen@waitakere.govt.nz](mailto:mark.allen@waitakere.govt.nz)

Postal Waitakere Wellbeing Collaboration Project

c/o Waitakere City Council

P.O. Box 93 109

Henderson

Waitakere City