



DON'T FORGET THE LIZARDS...

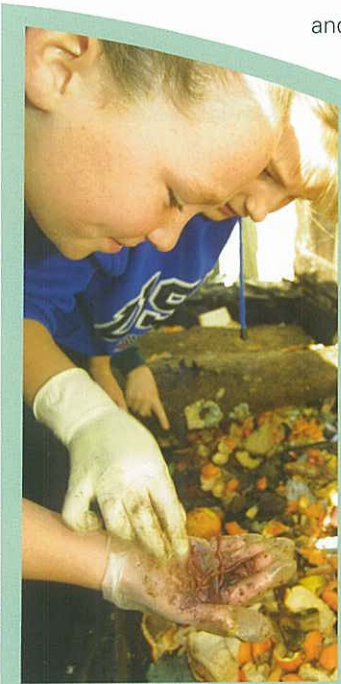
There are two main groups of lizards in New Zealand. Skinks have smooth, shiny skin and are often brownish or dull in colour. Geckos have velvety, baggy looking skin, and are usually green or greyish brown. Lizards, like birds, help spread the seeds of some native plants - for example the small fruited coprosmas.

LIZARDS LIKE:

- ◆ Safe hiding places - under rock piles and logs, driftwood and dense or wiry native groundcovers.
- ◆ Eating insects, spiders, flies, and small, fleshy fruits.
- ◆ Native groundcovers and shrubs with juicy berries like coprosmas and nectar bearing plants like flax and pohutukawa.
- ◆ Mulch with chunky bark and deep leaf litter.

USEFUL BUGS

- ◆ Worms are great for your garden - they aerate the soil, help process your compost and attract some birds.
- ◆ Praying mantids and ladybirds help control pests like aphids, scale and mealy bugs.
- ◆ Bees help pollinate your plants. Grow cabbage trees, manuka and koromiko to attract them.



DID YOU KNOW?

- ◆ New Zealand had about 100 species of land and fresh water birds in pre-human times, but because of human induced extinctions only just over half of these now remain.
- ◆ Pohutukawa produce nectar 24 hrs a day! Night feeders such as skinks and geckos once enjoyed these nectar feasts, but most of these nocturnal feeders have been wiped out by introduced predators.
- ◆ Kereru are the only native birds that can swallow and disperse the seeds of the large fruited puriri, taraire and karaka trees. Coastal forests depend on kereru for survival.
- ◆ Puriri moths live for only one night as a moth and are our biggest native moth. The larvae of puriri moths need their namesake puriri trees, along with putaputaweta and kanuka in which to live.



PETS ARE PREDATORS

No matter how tempting your planting is, birds will be discouraged by cats eyeing them up for dinner, so keep your cat well fed. A bell on your cat's collar might help to give the birds some warning. Keep your cat indoors at night so that nocturnal insects and lizards are free to roam.

THINGS TO DO:

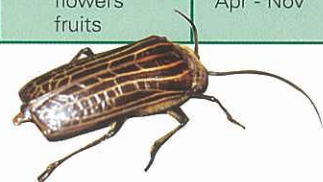
- ◆ See live geckos, stick insects and wetas at Arataki Visitor centre.
- ◆ See New Zealand native birds close up at the aviary at Auckland Zoo.
- ◆ When out walking in the forest, or near a wetland - stop, listen and watch for the birds.



SOME BEST BETS FOR ATTRACTING BIRDS INTO YOUR GARDEN

Native bird	Preferred native plants		Food source	Best time of year for birds
	Common Name	Botanical Name		
Shrubs				
silvereve tui	astelia	<i>Astelia banksii</i>	fruits	Feb - May
silvereve tui	flax (lowland), harakeke	<i>Phormium tenax</i>	nectar	Nov - Jan
Trees				
kereru silvereve tui	cabbage tree, ti kouka	<i>Cordyline australis</i>	flowers nectar berries	Jan - Apr
kereru tui	kowhai	<i>Sophora microphylla</i>	flowers nectar	Sept - Nov
kereru	nikau	<i>Rhopalostylis sapida</i>	berries	Dec - Jan
grey warbler fantail silvereve tui	manuka kanuka	<i>Leptospermum scoparium</i> <i>Kunzea ericoides</i>	insects on bark, branches & foliage	All year
kereru tui	titoki	<i>Alectryon excelsus</i>	berries	Oct - Dec
kereru grey warbler fantail silvereve tui	karamu/ shining karamu	<i>Coprosma robusta</i> / <i>C. lucida</i>	fruits insects	Jan - May
kereru	pigeonwood	<i>Hedycarya arborea</i>	berries	Nov - Apr
kereru tui	puriri	<i>Vitex Lucens</i>	flowers fruits	Apr - Nov

Note: this is a shortened list. For more info visit www.arc.govt.nz!



USEFUL RESOURCES & REFERENCES

Create Your Own Eden (ARC brochure)

www.arc.govt.nz/arc/environment/natural-environments/restoring_nature

www.forest-bird.org.nz

Encouraging Birds in the New Zealand Garden, by Gordon Ell

Advisory leaflets from the Auckland Regional Botanic Gardens

100 Best New Zealand Native Plants for Gardens, by Fiona Eadie

WELCOMING wildlife

Once upon a time Auckland's air was full of life, colour and song. Even when the region became urbanised, the big quarter acre sections enabled some birds to stay on and feed from the trees. Now inner city and suburban gardens are becoming smaller with fewer trees and therefore fewer birds. But even the smallest garden can attract wildlife - here are some hints.



BEST FOR BIRDS

Like humans, birds need food and shelter. These are provided by planting native trees. To maximise the benefits of your planting...

1. Link native plantings to your next door neighbour's trees or to neighbouring street trees, parks or streams. Some birds will not fly large distances over open ground, so create green corridors for them to move along.
2. Plant trees and shrubs that produce foliage, flowers, nectar, berries or seeds that attract birds, lizards and insects.
3. Provide a year round food supply by planting trees that flower or fruit at different times.
4. Plant a hedge using a mix of native species instead of building a fence.
5. Avoid insecticides and chemicals - they kill insects that are food for birds and lizards.
6. Imitate the bush edge: have some taller trees, bushy shrubs and undergrowth.

See the table on the back page for species to plant to lure birds to your backyard!