

# Covenants in Waitakere

## PROTECTING WAITAKERE'S GREEN NETWORK

### Introduction

### Green Network Covenants

### QEII Covenants

### Heritage Covenants

### Community Assistance

### Introduction

Waitakere has many unique and wonderful natural and heritage features, many of which are on private property. There are a number of options that you can consider to protect these special areas from damage and future development.

### Green Network Conservation Covenants

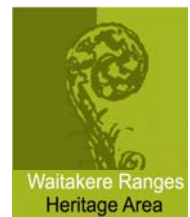
Green Network Covenants can help you conserve the natural and landscape features of your property. The covenant is a partnership in the form of a legal agreement between a landowner and the Waitakere City Council. The covenant serves to protect and proactively manage natural areas on private property. The covenant is drawn up under Section 77 of the Reserves Act 1977.



Council will cover all costs of writing the covenant, undertaking surveying (if required) and developing a management plan with your help. Landowners will be entitled to rates relief from Waitakere City Council.

### Heritage Covenants

Heritage Covenants are registered against the titles of properties that lie within the Waitakere Ranges Heritage Area. Landowners can register covenants on their titles to protect natural features as well as heritage features on their properties. Heritage features include such things as historic buildings and structures, historic farming practices, and dramatic landforms as well as many others.



Heritage Covenants are offered by Waitakere City Council and are drawn up under Section 23 of the Waitakere Ranges Heritage Area Act 2008. Council will cover all costs of writing the covenants, undertaking surveying (if required) and developing a management plan with your help. Landowners will be entitled to rates relief from Waitakere City Council.

### QEII Open Space Covenants

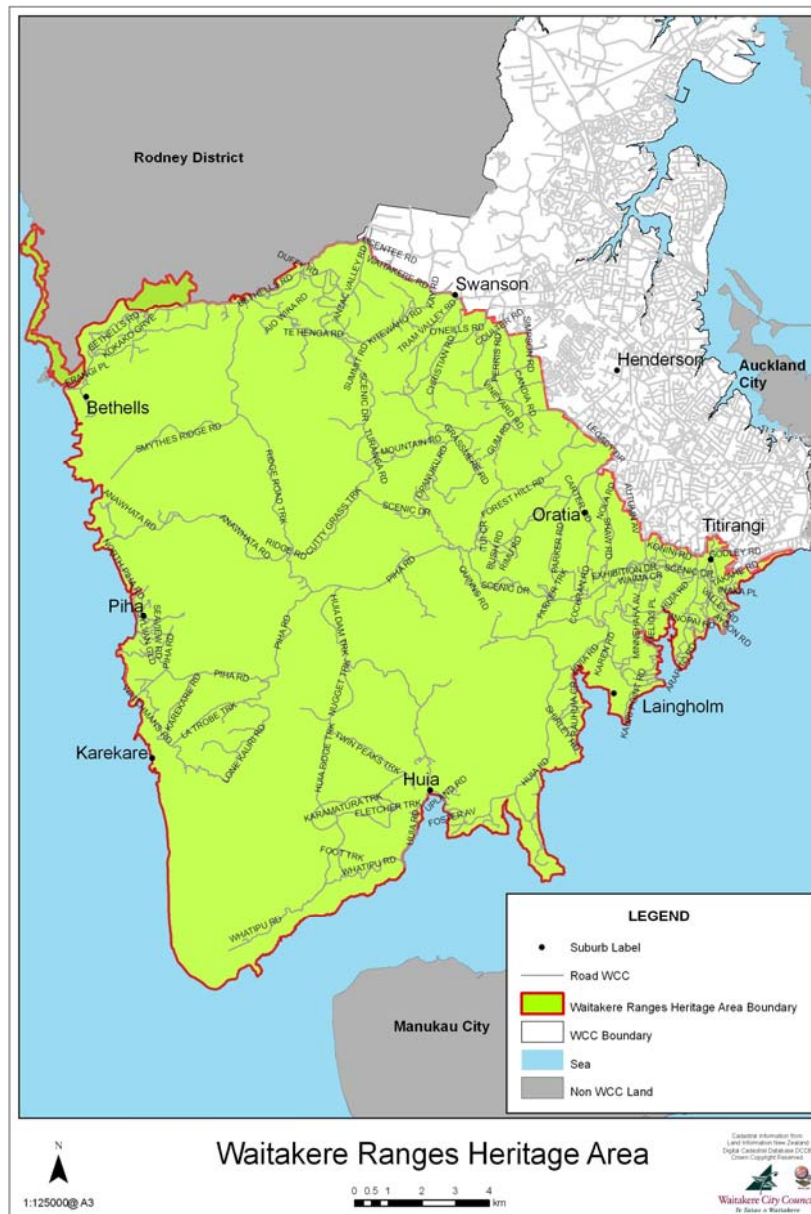
QEII Open Space Covenants are legally binding protection agreements, which are registered on the title to the property. A covenant is voluntary but once registered binds the landowner and all subsequent landowners.

Each covenant is unique; it can apply to the whole or part of the property. There can be different management areas within the covenant with varying applicable conditions. Conditions can be stringent where rare and vulnerable natural features or habitats are being protected. Covenants are drawn up under Section 22 of the Queen Elizabeth the Second National Trust Act 1977.



QEII National Trust  
Open Space New Zealand  
Ngā Kairauhi Papa

Landowners will cover some costs associated with registering the covenant, and if a management plan is developed will be entitled to rates relief from Waitakere City Council. For voluntary (non-subdivision related) covenants, the Trust will cover the survey cost, may contribute to establishment fencing, and those costs associated with registration. The Trust will also monitor the covenant every two years and a regional representative is available for technical assistance.



### Community Assistance

For all of the covenant types in Waitakere, the Council can offer you a wide range of assistance to help manage and protect your land. Through the Green Network Community Assistance Programme Council can offer:

- Skilled advice about managing your covenanted property;
- Rates relief proportional to the value of your land and the extent of the covenant;
- Assistance to fence off covenanted areas from stock;
- Assistance with weed control ranging from provision of herbicide, weed bins and contractor assistance;
- Free plants to rehabilitate areas where weeds have been removed, improving streamside vegetation, or providing connecting corridors between bush segments; and
- Traps and baits for controlling pest animals.

### Contact Us

For more information on covenanting contact the Waitakere City Council 24 Hour Call Centre on 09 839 0400, or email us on [greennetwork@waitakere.govt.nz](mailto:greennetwork@waitakere.govt.nz).

To contact the QEII Trust directly contact the regional representative, Dan Godoy on 09 529 2474 or email [dgodoy@openspace.org.nz](mailto:dgodoy@openspace.org.nz), or visit [www.openspace.org.nz](http://www.openspace.org.nz).