

Community Training Group Update

In March we held the very successful funding and fundraising workshop attended by more than 30 people. In April and early May many people attended the workshops, Governance and Management for Successful Performance and Human Resource Management for Boards and Committees, provided by Carol Scholes of Unitec. We have received excellent feedback on those who attended all these workshops.

The workshops are provided to not-for-profit organisations in Waitakere and are run by a collaboration of organisations including:

Waitakere City Council, Unitec, Sport Waitakere, Community Waitakere, WEA and Department of Internal Affairs. The aim is to cover the basic skills needed for new committee members and employees. Below is the timetable for the rest of the year.

If your organisation wants to attend please contact Mandy at Community Waitakere (mandy@communitywaitakere.org.nz) for attendance at daytime sessions or Steve Roberts at Sport Waitakere admin@sportwaitakere.co.nz.

Date	Type of training	Tutor	Location	Time	Cost
26 May	Recruitment, selection and placement of volunteers	Cheryl Martin	Te Atatu South Activity Room	9.15am to 12.45pm	\$40
9 June	Motivation and recognition of volunteers	Cheryl Martin	Te Atatu South Activity Room	9.15am to 12.45pm	\$40
27 May	Recruitment, selection and placement of volunteers	Cheryl Martin	Heron Coaches Room	5.30pm to 9.00pm	\$40
11 June	Motivation and recognition of volunteers	Cheryl Martin	Heron Coaches Room	5.30pm to 9.00pm	\$40
8 July	Events Management	Jan Brown and Jo-Anne Inancsi	Te Atatu South Activity Room	9.15am to 12.45pm	\$40
9 July	Events Management	Jan Brown and Jo-Anne Inancsi	Heron Coaches Room	5.30pm to 9.00 pm	\$40
13 and 20 August (evenings only)	Risk Management 2 sessions	Geoff Wood	Heron Coaches Room	5.30pm to 9.00 pm	\$40
31 August and 7 September	Introduction to Financial Management - 2 sessions	Aroha Heenie	Heron Coaches Room	5.30pm to 9.00pm	\$60
2 September	Introduction to Financial Management	Aroha Heenie	Te Atatu South Activity Room	9.15am to 2.45pm	\$60
16 September	Governance and Management for Successful Performance	Carol Scholes	Heron Coaches Room	5.30pm to 9.00 pm	\$40
7 October	Getting the right website for you	Matthew Nelmes	Te Atatu South Activity Room	9.15am to 12.45pm	\$40
8 October	Getting the right website for you	Matthew Nelmes	Heron Coaches Room	5.30pm to 9.00pm	\$40

Update on ASB Community Trust

The following information is taken from the ASB Community Trust website www.asbcommunitytrust.org.nz and will help community groups to understand why the Trust has currently suspended providing grants.

"Recently, the media focus has been on how much the dollar value of the Trust's asset value has reduced, but looking instead at the percentages helps to keep things in perspective. The value of ASB Community Trust's assets is down by 16.1%.

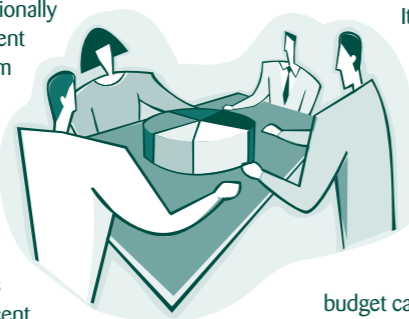
Those assets are invested nationally and internationally in a conservative and diversified investment portfolio which has weathered the storm reasonably well. The Trust's core assets are intact and are still worth over \$800 million. We will use income from these assets to rebuild the fund and then continue granting money for community projects and organisations throughout Auckland and Northland.

It is important to remember that the Trust has lived through market falls before, the most recent being the prolonged 2000-2002 downturn following the dot-com bubble. There have also been years when the annual return has been 15% or more. This all helps put a 16% reduction into perspective.

Our trustees have decided that it is their fiduciary duty to protect the fund as a long-term community asset. Putting grants on hold

until September 2009 will give our investments time to recover and, hopefully, generate enough income to create a modest grants budget.

The Trust is set up in perpetuity, so we have focused on the long term. Trustees have inflation-proofed the core assets so the real value is not eroded over time. Currently we are \$5m below that inflation-proof value. Our assets must recover that ground and create a surplus before grants can resume.



It is our trustees' duty to act in the best long-term interest of our trust and prepare for better times ahead. By ensuring that our core assets are maintained, we will be able to continue supporting our communities into the future.

Grants are made from any income generated above the rate of inflation and have averaged \$40m a year in recent times. However, we must await market stabilisation before the 2009 grants budget can be calculated.

Despite the downturn, our doors have not closed and we continue to work with not-for-profit organisations across the spectrum. We are still accepting grant applications, although a decision on those grants will have to wait until the second half of the year. We believe that this is the best way to support our community through the coming months of uncertainty".

Community Assistance



Waitakere City Council

ISSUE 30 • MAY 2009

Waitakere City Council Community Assistance Funds 2009/2010

Community groups and organisations applying for grants from the Waitakere City Council Community Assistance Funds will welcome the simpler and more efficient process for the 2009/2010 funding round.

From this year those applying for more than one fund will have to complete separate application forms. This is a return to the system used prior to 2008.

The change follows a three month review by the council after some organisations found the procedure where applications for all funds were made at the same time and on the same form, too complex and time-consuming.

The opening and closing dates for the Community Assistance Funds will be:

Community Wellbeing Fund

Open - 1 June 2009 Close - 10 July 2009, 5.00pm

Youth Partnership Fund, Community Halls & Marae Fund (General)

Open 3 August 2009 Close - 11 September 2009, 5.00pm

Community Accommodation Assistance Fund, Fee Waivers Fund

Open 5 October 2009 Close - 6 November 2009, 5.00pm

The council believes the new timelines will enable it to process and distribute the grants a lot faster.

Keep an eye on the website www.waitakere.govt.nz/CnlSer/fn/index.asp which will be updated over the next few weeks with more information and application forms. Forms will also be sent out to those that have received funding in the past.

A brief description of each fund available is below:

Citywide Community Wellbeing Fund

Funding for citywide services/projects/initiatives for not-for-profit community groups and organisations. A total of \$56,500 (per financial year) has been set aside for distribution to the community. The maximum amount that can be applied for is \$3,000.

Youth Partnership Fund

Support for innovative youth programmes in areas of Waitakere which have a high need. The maximum amount that can be applied for is \$5,000.

Community Halls and Marae Fund (General)

Assistance to community-operated, not for profit halls and marae that are available for public use. The grants are for maintenance and running costs and the venue be on the council-owned or community-owned council register.

Community Accommodation Assistance Fund

Assistance for not-for-profit groups that pay rates to Waitakere City Council on properties that provide support to Waitakere residents.

Fee Waivers Fund

Assistance for not-for-profit groups that have paid building consent fees to Waitakere City Council. Applicants can only apply for up to 1/3 of the total cost of the fees.

For more information on the Community Assistance Funds or help with completing the application forms please contact the Community Grants Officer, Kim Hammond on 839-0400.

Sustainable Funding Workshop

A Bay of Plenty organisation called Exult, is running a course on sustainable funding at the Te Atatu South Community Centre on 29 May. They have also produced a very interesting book on fundraising and run courses throughout the country.

The council runs courses on the same subject but it is quite likely that there is more to learn, especially as this course comes from the position of sustainable funding.

So if your organisation lives hand to mouth and you are constantly trying to find money for everyday operations you may wish to attend this course.

The first Auckland workshop, Sustainable Funding, you will discover:

- The seven key income streams available for community groups
- How to increase your income doing what you already do
- How to use your existing resources to generate NEW income, AND
- How to develop a sustainable funding plan so you are not always scrambling for cash

This workshop has proven very popular in other centres and fills up fast so register early to secure your space.

What: Sustainable Funding Workshop

Where: Te Atatu South Community Centre, Edmonton Road, Te Atatu

When: Friday 29th May, 9.30am - 4.00pm

Cost: \$75 Members / \$85 non-members

To Register: Email tracy@exult.co.nz

For more information about this workshop or the facilitator, check out the website www.exult.co.nz

Month	Funding Agency	Telephone	Website	Closing date	Meeting date	Brief description of funding criteria. (Important to check out fully before applying)
May	The Perry Foundation Ltd	07 834 4899	www.perryfoundation.org.nz	29 May 2009	25 Jun 2009	Provision of facilities, equipment, uniforms, coaching, education, social welfare, relief of poverty, arts and culture, scholarships, trophies, cash prizes.
	Catholic Caring Foundation	09 360 3045	www.caringfoundation.org.nz	31 May 2009		Assisting charitable activities of both Catholic and non Catholic charities and fostering the development of parish caring communities.
	J R McKenzie Trust - regional applications	04 472 8876	www.jrmckenzie.org.nz	31 May 2009	3 months later	Operating and project-related costs, staff training, salaries, volunteer expenses, administration costs for social and health services NOT part of a national structure.
June	The Trusts Charitable Foundation West Auckland	09 835 0092	www.ttcf.org.nz	11 Jun 2009	9 Jul 2009	Sporting playing uniforms, equipment, coaching, building and maintenance, arts and culture, community, education, travel, vehicles and scholarships.
	Mazda New Zealand Foundation		www.mazdafoundation.org.nz	30 Jun 2009		Environmental support, advancement of culture, education and employment skills, arts assistance to educate NZ public on NZ culture.
July	Lottery Regional Community Committees	0800 824 824	www.cdgo.govt.nz	1 Jul 2009	16 Nov-2009	Developmental or preventative projects, welfare and support services, or projects that help to improve the wellbeing of people in the community.
	Vodafone NZ Foundation (World of Difference)		www.vodafonefoundation.org.nz	July	For next year	Capacity building for youth focused organisations.
	Environmental Initiatives Fund	09 366 2000	www.arc.govt.nz	8 Jul 2009		Practical support and advice for Auckland community to be actively engaged to protect and enhance their local environment and heritage.
	Community Wellbeing Fund	09 836 8000	www.waitakere.govt.nz	10 Jul 2009		Running costs, research, community project or event, small scale equipment
	Lottery Environment and Heritage	0800 824 824	www.cdgo.govt.nz	10 Jul 2009	6 weeks later	Protection, promotion, conservation, restoration of natural heritage, cultural heritage, historical buildings and machinery
	The Trusts Charitable Foundation West Auckland	09 835 0092	www.ttcf.org.nz	9 Jul 2009	30 Oct 2009	Sporting playing uniforms, equipment, coaching, building and maintenance, arts and culture, community, education, travel, vehicles and scholarships.
	Lottery Community Facilities Fund	0800 824 824	www.cdgo.govt.nz	24 Jul 2009	30 Oct 2009	To construct and improve community facilities that supports community participation and social interaction to strengthen communities.
	COGS	0800 824 824	www.cdgo.govt.nz	31 Jul 2009	13 Nov 2009	Ongoing running costs, rent, travel, volunteer and administration expenses, hui, fono or community workshops, project development costs.
	The Perry Foundation Ltd	07 834 4899	www.perryfoundation.org.nz	31 Jul 2009	27 Aug 2009	Provision of facilities, equipment, uniforms, coaching, education, social welfare, relief of poverty, arts and culture, scholarships, trophies, cash prizes.
	Transpower CommunityCare Fund	04 495 7005	www.transpower.co.nz	31 Jul 2009	September	Projects in areas affected by Transpower assests, maintenance or upgrade plans. One off projects, capital works, projects with high level of community involvement
August	Nature Heritage Fund	04 471 0726	www.nhf.govt.nz	31 Jul 2009		To protect indigenous ecosystems by providing incentives for Voluntary conservation.
	Creative Communities Scheme - Waitakere	09 839 0400	www.waitakere.govt.nz	3 Aug 2009	6 weeks later	To increase participation in the arts at the local level, and to increase the range and diversity of arts available to the Waitakere Community.
	The Fletcher Trust	09 525 9250	www.fletchertrust.org.nz	6 Aug 2009	17 Aug 2009	Education and youth development programmes and 'start up funding' for worthwhile projects.
	Lottery Pacific Provider Development	0800 824 824	www.cdgo.govt.nz	7 Aug 2009	4 Dec 2009	Provides assistance to New Zealand based Pacific community groups to help them improve their organisations and processes
	Lottery Marae Heritage and Facilities	0800 824 824	www.cdgo.govt.nz	14 Aug 2009	13 Nov 2009	Capital costs of the conservation, restoration and development of marae facilities, particularly whareniui, wharekai and wharepaku facilities
	The Trusts Charitable Foundation West Auckland	09 835 0092	www.ttcf.org.nz	6 Aug 2009	10 Sep 2009	Sporting playing uniforms, equipment, coaching, building and maintenance, arts and culture, community, education, travel, vehicles and scholarships.
	Lottery National Community Committee	0800 824 824	www.cdgo.govt.nz	28 Aug 2009	4 Dec 2009	Developmental or preventative projects, welfare and support services, or projects that help to improve the wellbeing of people in the community.
	J R McKenzie Trust - national applications	04 472 8876	www.jrmckenzie.org.nz	31 Aug 2009	3 months later	Operating and project-related costs, staff training, salaries, volunteer expenses, administration costs for National office of social and health services.
	Community Post	Any Post Shop	www.nzpost.co.nz	31 Aug 2009	Oct 2009	Postage paid envelopes
	Todd Foundation General Fund (National initiatives)	04 931 6189	www.toddfoundation.org.nz	End Aug	Nov 2009	Children and Young People, High Need families, Early Childhood Education, Disabled Children, Talented and Gifted Children and Youth Development.
September	Environmental Education Action Fund	04 499 2930	www.wwf.org.nz	1 Sep 2009		Projects that use education as a tool to take action for the environment. (Projects must have clearly defined learning outcomes)
	Youth Partnership Fund	09 836 8000	www.waitakere.govt.nz	11 Sep 2009	6 weeks later	Financial support for providers of existing youth programmes within Waitakere City.
	Community Halls and Marae Fund	09 836 8000	www.waitakere.govt.nz	11 Sep 2009	6 weeks later	Facility maintenance, volunteer costs, promotion, health and safety, small scale equipment for community operated, not for profit halls
	Graduate Diploma Not-For-Profit Management	09 815 4321	www.unitec.ac.nz	14 Sep 2009		Course Fee subsidy for Unitec's Graduate Diploma in Not-For-Profit Management - (Must apply at least one month prior to the start of first course)
	Sir John Logan Campbell Residuary Estate	09 524 6442	www.jlcampbell.co.nz	15 Sep 2009	End Nov 09	Relief of poverty, advancement of education and other purposes beneficial to the community.
	The Trusts Charitable Foundation West Auckland	09 835 0092	www.ttcf.org.nz	10 Sep 2009	8 Oct 2009	Sporting playing uniforms, equipment, coaching, building and maintenance. arts and culture, community, education, travel, vehicles and scholarships.
	Mazda New Zealand Foundation		www.mazdafoundation.org.nz	30 Sep 2009		Environmental support, advancement of culture, education and employment skills, arts assistance to educate NZ public on NZ culture.
	The Perry Foundation Ltd	07 834 4899	www.perryfoundation.org.nz	30 Sep 2009	29 Oct 2009	Provision of facilities, equipment, uniforms, coaching, education, social welfare, relief of poverty, arts and culture, scholarships, trophies, cash prizes.
	Nature Heritage Fund	04 471 0726	www.nhf.govt.nz	31 Oct 2009		To protect indigenous ecosystems by providing incentives for Voluntary conservation.
	October	The Trusts Charitable Foundation West Auckland	09 835 0092	www.ttcf.org.nz	8 Oct 2009	5 Nov 2009
Cathay Pacific Charity Travel Awards		09 379 0833	www.cathaypacific.com/nz	October		Air Travel for research, further study, or conference attendance to any destination on Cathay Pacific Network.
Waitakere City Council Massey Matters Fund		09 836 8000	www.waitakere.govt.nz	October	6 weeks later	To provide small sums of money (up to \$3,000) to assist groups and individuals to carry out new projects that will support the community of Massey.
November	Lottery Regional Community Committees	0800 824 824	www.cdgo.govt.nz	2 Nov 2009	16 Mar 2010	Developmental or preventative projects, welfare and support services, or projects that help to improve the wellbeing of people in the community.
	Community Accommodation Assistance Fund	09 836 8000	www.waitakere.govt.nz	6 Nov 2009	6 weeks later	Support for not for profit organisations for property rates or that part of a lease rental that covers rates within Waitakere City.
	Fee Waivers Fund	09 836 8000	www.waitakere.govt.nz	6 Nov 2009	6 weeks later	Up to one third rebate to cover the cost of consent fees paid to Waitakere City Council by not-for-profit organisations.
	The Trusts Charitable Foundation West Auckland	09 835 0092	www.ttcf.org.nz	5 Nov 2009	TBC	Sporting playing uniforms, equipment, coaching, building and maintenance, arts and culture, community, education, travel, vehicles and scholarships.
	The Fletcher Trust	09 525 9250	www.fletchertrust.org.nz	5 Nov 2009	16 Nov 2009	Education and youth development programmes and 'start up funding' for worthwhile projects.
	John Ilott Charitable Trust	04 904 4156	email: rcw@opalsoft.co.nz	10 Nov 2009		Childcare, holiday and after school programmes, setting up groups (seeding money), training/education; sexual education, literacy.
	Lottery Environment and Heritage	0800 824 824	www.cdgo.govt.nz	13 Nov 2009	5 Mar 2010	Protection, promotion, conservation, restoration of natural heritage, cultural heritage, historical buildings and machinery
	The Perry Foundation Ltd	07 834 4899	www.perryfoundation.org.nz	27 Nov 2009	17 Dec 2009	Provision of facilities, equipment, uniforms, coaching, education, social welfare, relief of poverty, arts and culture, scholarships, trophies, cash prizes.
December	Lottery Marae Heritage and Facilities	0800 824 824	www.cdgo.govt.nz	4 Dec 2009	19 Mar 2010	Capital costs of the conservation, restoration and development of marae facilities, particularly whareniui, wharekai and wharepaku facilities
	Sargood Bequest	03 474 0900	PO Box 5546, Dunedin	31 Dec 2008	April/May 2010	Arts and culture, children, community, education, elderly, health, sport and recreation, youth
	United Way NZ - New Zealand's Local Charity	09 377 2544	www.unitedway.org.nz	31 Dec 2009	Apr 2010	Helping children and youth succeed, supporting the vulnerable, elderly and families. Promoting health, independence and self sufficiency.
Always Open	BP Vouchers for volunteers	0800 800 027	www.bp.co.nz			Petrol vouchers - to assist volunteer organisations that use vehicles to get people to essential services or bring them the provisions they need.
	Green Network Community Assistance	09 839 0400	www.waitakere.govt.nz	Always open		To support community projects that improve the natural environment of the city on private and public land.
	Keep Waitakere Beautiful Trust	09 826 4276	www.kwbt.org.nz	Always open		To support community groups and schools with plantings and cleanups
	Techsoup New Zealand	09 887 0291	www.techsoup.net.nz	Always open		To assist not-for-profit groups to build their ICT capacity by providing donated software from companies such as Microsoft.
	The Lion Foundation	09 488 7707	www.lionfoundation.org.nz	1st each month		Funding is shared between community, including arts, culture, heritage and environment (30%), health (20%), sport (40%) and education (10%)
	The Southern Trust	0800 424 274	www.southerntrust.org.nz	Monthly		Sports facility maintenance and development, equipment, uniforms, coaching, travel expenses. Education, Social Welfare.
	Todd Foundation General Fund	04 931 6189	www.toddfoundation.org.nz	Always open	May and Dec	Supporting Children, Young People and their families to provide safe and nurturing environments, helping people to be school ready and develop their potential
	Variety - The Children's Charity	09 520 4222	www.variety.org.nz	Monthly		Most costs except research, salaries and wages, administration, overseas travel, computers for schools, vehicles for individuals/families and capital work

Please note that dates can change without warning - also the criteria and eligibility for funding needs to be checked prior to making an application. Most organisations would prefer you to ring to speak with them before making an application.