

ArtLink

Waitakere City's
Arts Newsletter
April/May
2008

McCahon House Artist in Residence Programme

The McCahon House, situated on Otitori Bay Road, is now into its second year of operation. The original McCahon cottage is open to visitors and the current artist in residence has just moved into the Pete Bossley designed apartment and studio adjacent to the cottage.

MCCAHON
FRENCH BAY HOUSE
RESTORATION & RESIDENCY



Andrew McLeod in the Studio

To date residencies have been held by Judy Millar, Andrew McLeod, James Robinson and Gavin Hipkins.

Painters **Rohan Wealleans**, **Richard Lewer** and **Louise Fong** will be living and working in the purpose built residency high in the bush beside McCahon's old bach in French Bay during 2008. There will be some exciting work produced.

The Trust is calling for volunteers who can help open up the restored McCahon House to the public for 4 hours on Wednesdays and on the weekends.

Volunteers find this work very rewarding and have the opportunity not only to be part of an exciting project but also to get to know the resident artists and be part of a team passionate about art and an important heritage feature of Titirangi.



The McCahon House Cottage

A 'Friends of the McCahon House' programme is also underway and is open to supporters for a subscription of \$100 per year. (Less than a cup of coffee a week!) This entitles subscribers to invitations to all project events and discounts on the limited-edition artworks produced by each artist in residence.

For more information contact Cynthia Smith at Lopdell House Gallery. Ph 817 8087 extn 203 or email: mccahon@lopdell.org.nz

Local talent transforming Massey

For residents of Massey and West Harbour, the environment is being enhanced with designs by local artists painted onto Vector-owned transformer boxes.

Take a stroll down to Moire Road bus stop to view artist Monique Endt's stream life design, and along to Oriel Ave to a box transformed into a Pohutukawa. Artist Monique Endt has worked with students



Moire Road box design by artist Monique Endt

from Royal Road School for a colourful design in Royal Road. Massey High School are also working on a design in conjunction with Project Twin Streams and artist Mandy Patmore that will enhance the box at the High School exit. Local community ideas for designs were sought and nature themes prevail on many of the boxes, including coastal birds in Waimumu Road painted by Lynda Harris and native birds in Triangle Road painted by Dan Mills. More are being worked on in the area with some urban scenes incorporated into designs.



Triangle Road box design by artist Dan Mills

The project, funded by Waitakere City Council and supported by Vector is a popular and effective way method to reduce tagging and enhance the local environment.

Boxes are coated with a graffiti protection when finished and tagging can be washed off.

For further information please contact Julie Nash, Community Arts Coordinator, Waitakere City Council. Ph 836 8000 extn 8934 Email: Julie.Nash@waitakere.govt.nz



Waimumu Road box design by artist Lynda Harris

Events out West

Waitakere Artists Open Their Doors



photo John Simpson

Bus tour visitor Angela Penteadó with young artists Tiago Penteadó and Chinmay Patel are inspired by the work of Lynn Simpson

The **Waitakere City Artists' Open Studio weekend** on March 1 & 2 saw a great many visitors brave the wild weather to visit artists in their home studios and at cluster groups. New Lynn artist Lynn Simpson took the chance to show off her brand-new purpose built art studio and says the weekend provided the incentive she and her husband John needed to finish it. Her colourful paintings certainly looked the part on the fresh new walls and Lynn enjoyed the chance to show visitors her work. The Sunday afternoon bus tour visited Lynn's studio and brought with it some young aspiring artists hoping to gain inspiration for their own work.

The variety of artists participating ranged from experienced, professional artists to those who were displaying their work for the first time. Altogether it was an inspirational experience for all involved. Keep an eye out for info on next year's event. For further information contact Julie Nash. Ph 836 8000 extn 8934 or email:

Julie.Nash@waitakere.govt.nz

March 1 was also **Art on the Beach** at Piha, organised by Lopdell House Gallery. The day dawned wet and miserable, not a good start for an outdoor event hoping to draw families to the beach on Auckland's wild west coast. This year was to be wilder than usual with the Wild Theatre Company's puppeteers braving the weather determined that the show would go on. Fortunately the rain cleared in the afternoon and around 200 determined sand sculptors arrived to make the most of the day. Rebekah Wild's fantastic puppets drew lots of attention and were very popular with both children and adults with two shows in the afternoon and plenty of play time in between. The sand sculpture competition was judged by Tony Dunn, Clive Taylor and Chrissy Kell. The winning sculpture "Save Our Eels" by Mandy Patmore and Adrienne Torrens narrowly beat "Black Mountain" by Caleb Chia in 2nd place and "Green Samoan Turtle" by the La Roche family in 3rd place.



Cameo Duncan enjoys the Wild Creations

photo Chris Houll

Trash to Fashion® goes full steam ahead



photo Designer Kate Stockfeldt. Fall of My Feet

Trash to Fashion® is back and is promising to be better than ever in 2008. Following a gap year in 2007, the Waitakere City Council's Culture and Community Committee voted unanimously to re-launch the full Eco city's iconic **Trash to Fashion® Awards**.

Building on the success of the **2007 Schools Trash to Fashion® Awards**, this schools event has also been established as an annual event designed to support and enhance the education values inherent in preparing a garment for entry.

The experience offers a potential pathway for students from primary school to professional careers in environmentally-sustainable product design. Winning entries from the Schools Trash to Fashion® Awards will be integrated into the performance of the Trash to Fashion® Awards at the Trusts Stadium alongside the adult entries which include creations from enthusiastic amateurs to professional fashion designers.

The Schools show is being maintained as a separate event from the Awards for adult entrants so that the educational values can remain the focus of student entrants and allows them to be judged against their peers at primary, intermediate, and secondary level while still offering the experience of being in "the big show" for the highest quality entries.

Schools show dates:

Registration form due: 30 May, 2008
Garment due: 15 Aug, 2008
Rehearsals: 6 & 7 Sept, 2008
Performances and Awards: 13 & 14 Sept 2008
Venue to be announced.

Main Show dates:

Registration form due: 22 Aug, 2008
Garment due: 4 Oct, 2008
Performances: 28 & 29 Nov 2008
Awards: 29 Nov 2008
The Trusts Stadium, Henderson

For further enquiries contact Jeannette Aldridge, Project Coordinator, Ph 836 8000 ext 8431. Email: jeannette.aldrige@waitakere.govt.nz Check out www.trashtofashion.co.nz for more information.

The Titirangi Festival of Music 2008

A week-long festival of concerts, café gigs, street music and workshops. 29 March – 5 April 2008



The Waitakere Village of Titirangi will burst alive at the end of March as a throng of music lovers descends to soak up the feel-good vibes of the Titirangi Festival of Music.

The Festival will be officially opened by **Te Kawerau a Maki, Mayor Bob Harvey** and combined group powhiri led by **Te Ropu Kapa Haka o Te Atatu**. This will be followed by an afternoon of music in the sun featuring a collection of superb West Auckland musical talents: **the Mamaku Project, Mahinarangi Tocker, One Million Dollars and local DJ Ropehead Riddims**. Saturday 29 March. Official blessing and opening: 12noon. Opening concert begins 1pm, Tangiwai Reserve, Huia Road, Titirangi. **FREE**.

Musical Workshops

A chance to participate and create your own music, the festival workshops includes **hand-drumming** for kids and adults, **Marimba** and **Tabla** percussion sessions, **singing** with **Tui** from the **Mamaku Project**, drumming with **Fraser Bruce** from the **Rhythm Centre**, **Khathak dance** with **Subhash** from Rajasthan, India, a **ukulele** workshop for kids, and how to make and play **Taonga puoro** (traditional Maori instruments). Sat 30 March and Sat 5 April.

Waitakere City Orchestra Concert, Conducted by **Brigid Ursula Bisley**, and featuring well-known Waitakere cellist **Natarani Witten-Hannah** of **Heartstrings** duo; Waitakere City Orchestra's principal cellist, the wonderful Russian-trained **Ali Al-Azzawi**, originally from Iraq; and virtuoso Russian violinist **Elena Abramova** will play on Saturday 29 March, 7.30pm at the Titirangi War Memorial Hall.

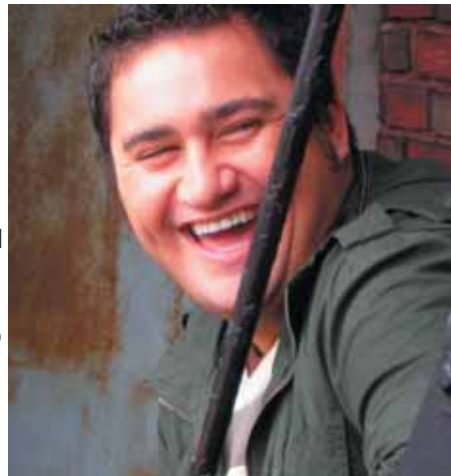
The **John Green Memorial Concert** is a fitting tribute to a much-loved and admired Waitakere personality. Join **Mayor Bob Harvey**, well known singer songwriter **Luke Hurley**, jazz musician **Dan Sperber**, John's **Anawhata crew** and many others for a special celebration of the enigmatic spirit that was John Green. Wednesday 2 April, 8pm, Titirangi War Memorial Hall.



The late John Green - talented local artist and musician

Jazz Extravaganza with Tama Waipara & Friends

The internationally acclaimed, talented and soulful musician **Tama Waipara**, who has recently returned to our shores will join us for a night of cool funky jazz, backed by Auckland's top jazz musicians. Also performing are **The Shades** and **Charlotte Johansson**.



Tama Waipara

Thursday 3 April, 8pm, Titirangi War Memorial Hall.

The Artisan Wines Acoustic Cafe. Titirangi Theatre, (under Lopdell House) will be transformed into the Artisan Wines Acoustic Café where you can listen to some of the finest music Titirangi has to offer. Artists include the instrumental genius of Grammy award nominee **Russel Walder** on oboe and guitar virtuoso **Nigel Gavin**, **The Sami Sisters**, **Jonny Corker**, **The Hot Grits**, **Derek Browne**, **Fiona McEwen**, **Roger Greenaway**, **Victory Road**, **Andrea Tunks**, **Pauanation**, **The Titirangi Folk Club**, **Soul Sax Plus**, **Sol de los Andes**, **Jon Sanders**, and the **Dave Alley Band**. Every night from 7.30pm, Sunday 30 March – Saturday 5 April.

For information and bookings: Visit www.tfm2008.co.nz for a timetable or call the booking office ph 817 2797.

Tickets are available from:

Real Groovy Records ph 302 3940

Ticketmaster www.ticketmaster.co.nz

Titirangi Pharmacy ph 817 7658

or the booking office ph 817 2797

Numbers are strictly limited for each venue, so please book early to avoid disappointment.

Whanau Day Out 2008

Whanau Day Out

• SAT 5TH APRIL 2008 • PARRS PARK • 10AM TO 6PM

www.Ezekiel33.org.nz
Building Stronger Communities

Event Organisers: Whanau Day Out, Fleek Out West, Youth Shoot Out, Ozama Festival, Kaiti Kōwhiri Kai

• FREE ENTRY • FREE FAMILY FUN • FREE RIDES • FREE PARKING

Flax Cafe musical showcase

Flax Café, 308 Henderson Valley Road, Henderson.

The next West Auckland music showcase guarantees to unforgettable nights of music in conjunction with the Titirangi Music Festival. On **Friday 4 April** a performance featuring the lovely and talented Charlotte Johansen, Sarah Macombbee, Andy Gibson, Reb Fountain & Stewart Allan
Start time 8pm. Tickets \$15 from Go West Music or for sale on the night \$20.00.

Also, **Shona Laing** will be performing on **Friday 2 May**
Tickets \$25 from Go West Music.

Enquiries, contact Charlotte Johansen ph 021 022 49205
or email: Charlotte@charlottejohansen.co.nz

Dream Stream Competition at Eco Day

Project Twin Streams had a great time at Eco Day on Saturday 9 March, hosting the *My Dream Stream* design competition. With over 40 wonderful entries, it was difficult to choose a winner! However, 1st place was awarded to Siarna Ashby (Under 8yrs) and Rowan Hart (8 – 14yrs). Both Siarna and Rowan created amazing designs, and captured well the vision of Project Twin Streams.



Winner Rowan Hart - 8 - 14 year category

A similar competition will be hosted by Project Twin Streams at the Glen Eden Community Planting Day on Sunday 13th April, at Duck Park, Glen Eden.

If you live near the Oratia Stream, you may like to come and join in with the Oratia Community Planting Day on May 18th, in Serwayne Place. This will be a great day out for the whole family, with a paper-pulp workshop organised for the kids. Also a planting day is being organised for 24 May at Henderson Creek. Come and support these events, and help build the future by planting a tree for your community, and your stream. Enquiries ph 836 8000 ext 8745.

Events other regions

WHK Gosling Chapman - High Impact Programme for the Creative Sector

This programme is offered to Creative businesses and focuses on building your business and profitability from initial start through to maturity. It involves four full day workshops at the offices in Shortland Street and one-on-one follow up coaching sessions.

The following key areas will be covered:

- Day 1:** Planning for growth & building your brand (1 April)
- Day 2:** How to market to NZ and offshore customers (8 April)
- Day 3:** Growing the profitability of your business – this includes looking at costing and pricing strategies, and looking at the financial elements of your business and identifying where changes can be made (15 April)
- Day 4:** Developing your sales pitch and business case (22 April)

The programme is fully funded by New Zealand Trade and Enterprise and is free to those businesses selected to participate. This programme will commence on April 1, 2008. As there are limited places, an early expression of interest is recommended.

Creative businesses interested in applying for the programme should contact Juliet Hawkeswood for an application form on (09) 968 8517, or email: Juliet.Hawkeswood@whkgoslingchapman.com
Web: www.whkgoslingchapman.com
WHK Gosling Chapman – a division of WHK (NZ) Limited

Tania Sunde - Potted Colour

A Community Arts Exhibition. Opening preview:
Friday 14 March at 5.30pm
The Rose Centre, School Road, Belmont, North Shore City.
Ph 445 9900. Email: rosecentre@xtra.co.nz
www.rosecentre.co.nz www.taniasunde.com

Puhoi Art Exhibition

April 5 - 13, 2008
Artists and sculptors from the Rodney District and surrounding areas are invited to exhibit. This is the 3rd year running of the exhibition, which is held in the old Puhoi Hall. All money raised is for the hall's upkeep. Artists can enter on the day or phone Fae England on 09 422 0064.

FREE web site for art work

<http://exhibitonline.co.nz/submit.php>
This is FREE for all artists and creative people looking for another affordable avenue to market their work. There is no charge to place your art for sale and it is intended to build a high profile, active site to reflect a high calibre of New Zealand art. There is a commission on sales and most of the proceeds are going to StepUp Foundation charity. Contact Jody Jelas, mobile 021 024 54401
ph 09 426 9824, fax 09 426 1467.

6 Week Voice Training Course with Sally Stockwell

Sundays 11am - 1pm, March 30 - May 4, 2008 (No Easter Sunday class)
Address: 308 Great North Road (Astanga Yoga Centre)

This course offers a frame work for students to progressively develop their voice over a 6 week period, working regularly with exercises and improvisations. The course is designed to “free” and release the voice, and also develop strength, resonance, texture, and presence within the voice. Exercises and improvisations explore breath, range, vibration, quality of sound, with a strong focus on body awareness and movement. The work also extends to group song and improvisation, poly rhythms, and some text work. This course is relevant to both the singing and spoken voice, and is open to participants of all levels.

Sally graduated from Toi Whakaari/ N.Z Drama School in 1995 and has been working professionally in theatre, film and radio for 12 years, and more recently as a singer.

Cost: \$240. (15% deposit required) Limited to 10 people.
Please confirm sallystockwell@gmail.com
or text 021 2162658.

Performing Arts

Flicks @ Titirangi are delighted to have secured an agreement from Hopscotch Films to screen John Pilger's prestigious film, **War on Democracy** for their April screening which falls on Anzac day - 25 April. In this movie, award-winning journalist John Pilger examines the role of Washington in America's manipulation of Latin American politics and, in light of this, the struggle by ordinary people to free themselves from poverty and racism. The film focuses on countries such as Venezuela, Bolivia and Chile, but also reveals similar CIA policies to be continuing in Iraq, Iran and Lebanon. Rated M for mature audiences.



Four Minutes – an award winning movie set within a women's prison Tickets \$12 are available from bookings@flicksattitirangi.co.nz Screening in May. Ph 817 5884 or purchase from Titirangi Pharmacy. Flicks screen at Titirangi Theatre, Lopdell House, 418 Titirangi Road.

Goudge Drama

Rimu Glade Studio, 4 Rimu Rd, Oratia.

Ph 814 9744 or email gougedrama@zip.co.nz

Acting training for adults with tutor, actor & director John Goudge.

Rimu Glade Theatre Project: 20 weeks. Final performance on 5 July. The aim of Rimu Glade Theatre Project is to give actors the chance to explore intuitive styles of acting & to create a performance piece. This will be performed at the end of the course for a paying audience.

Term 2 Improvisation & Theatre Games: 8 weeks. Monday nights. 5 May – 30 June. An infamous & hilarious course for anyone. Learn how to improvise, tell stories, work as a team, & give the audience what they want. Learn to let go of your barriers to expression. Create an amazing show for a live studio audience. Fee \$160.

I visit schools, theatres & other institutions to run workshops & special projects. I also work with businesses to develop drama courses that help approve office morale, productivity, & staff confidence with public speaking & customer service.

Playhouse Theatre

15 Glendale Rd, Glen Eden. Ph 818 5751

Email: enquiries@playhousetheatre.org.nz

Peach Theatre Company presents "**Blood Brothers**" Willy Russell's award-winning musical. Thursday 3 to Saturday 19 April. Director: Jesse Peach.

Musical Director – Jason Te Mete. Blood Brothers is a tale of twins who are separated at birth. Their paths are destined to cross again in both friendship and anger – with the most tragic consequences imaginable. Starring legendary entertainers Ray Woolf and Annie Whittle and accompanied by an electrifying live band. Book at www.iticket.co.nz ph 361 1000.



\$28/\$25 or purchase from Glen Eden Amcal Pharmacy.

Peach Theatre Company presents **Niu Sila** written by Oscar Kightley & Dave Armstrong Saturday 10 to Saturday 24 May. Don't miss this hit comedy from the writers of Bro' Town. Oscar Kightley and Dave Armstrong's Niu Sila has had sell out seasons around the country. Funny and poignant, Niu Sila is about a friendship spanning over thirty years, two cultures and one neighbourhood. In 1960s Wellington, six year-old Ioane Tafioka – fresh off the boat from the Pacific moves in next door to six-year-old Peter Burton. They begin an unlikely friendship that will change their lives. Tickets: \$22 / \$18. Glen Eden Amcal Pharmacy, or book online at www.iticket.co.nz For more information: www.peachtheatrecompany.co.nz



Waitakere City Orchestra Trust Concert Series

Music for strings orchestra conducted by Brigid Bislej Sunday May 11 at 4pm Book at www.iticket.co.nz ph 361 1000

North Shore Concert Band presents **Hooked on Classics**

featuring the Waitakere City Ladies Choir Sunday May 18 at 2pm. Bookings ph Raylee 838 8217

Show West Singers

Show West Singers rehearse in the Opanuku Studio at Corban Estate Arts Centre, 426 Great North Road, Henderson. Wednesdays 7:30pm.

Members welcome. Enquiries Judy King Ph 817 7776

or email: m.a.gasparini@xtra.co.nz

Soul - Centre of the Body & Mind

18 Huia Road, Titirangi. PO Box 60415 Titirangi.

Email: info@soulcentre.co.nz

Website: www.soulcentre.co.nz. Ph 817 3051

Yoga For Personal Transformation with Jane Burt.

Saturday 5 April, 1.30-5pm. \$60

Skinner Release Technique with Wilhemeena Gordon

Introductory and Ongoing Workshop series. 6 April, \$70.

The Heart Wisdom Series with Lorraine Blackley

This workshop is designed to assist you to restore the balance between head and heart. 19 April, \$95.

Weekly classes also starting on Thursday nights for 5 weeks from 15 May - 12 June.

Al Wunder Workshops and Ongoing Improvisation practise. 20 April, 11 May. \$10. AL WUNDER's next workshop (in the flesh) will be Nov 7-9. Book now and start coming to practice.

Two Body/Mind workshops with E. Connor Kelly (USA)

Building Observational and therapeutic skills through Laban/Bartenieff Movement Analysis and Kestenberg Movement Profile. AND

Authentic Movement Workshop

Saturday 26 April/Sunday 27 April, 10-5pm. \$200 for the weekend, \$125 for each individual day

MAY WORKSHOPS INCLUDE: Wu-Tao with Sheoniagh Rennie, Bones for life with Christine Cutbush (USA)

Titirangi Theatre

Lopdell House, 418 Titirangi Rd, Titirangi.

Ph 817 5951 www.titirangitheatre.co.nz

Group Bookings ph Liz 817 5812.

"Secret Bridesmaid's Business" by Elizabeth Coleman

Director: Brian O'Connor. Performances from May 13 to May 24.

This highly entertaining play takes place in a hotel room on a Friday night, where a bride, her mother and her two bridesmaids are spending the "Hen's Night", the night before the wedding. Wedding plans are always fraught with the possibility of disaster and this is no different.

This lovely, funny and thoughtful play will keep us all entertained.

Waiatarua Theatre

Waiatarua Community Hall, 911 West Coast Rd, Waiatarua.

Ph 814 1850. Email: wpat.tickets@xtra.co.nz

Waiatarua Performing Arts presents **Ladies Who Lunch**

A comedy by Tudor Gates, directed by Peter Mason.

30 April – 10 May, 2008, at 8 pm. . 6.30 performance on Sunday 4 May.

Tickets \$20/\$15 ph 814 9744. Bookings essential.

Waitemata Theatre Inc.

The Cellar, Corban Estate Art Centre 426 Great North Rd, Henderson.

Waitemata Theatre presents **The End of the Golden Weather**

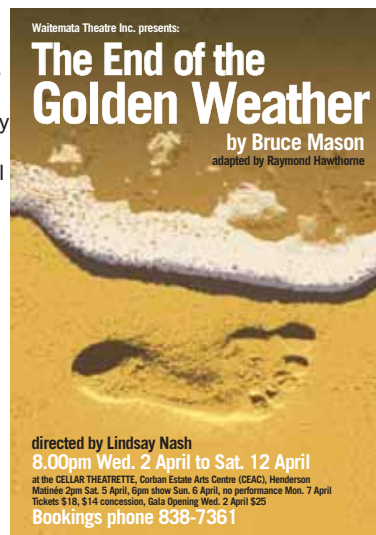
by Bruce Mason. Director Lindsay Nash.

Bruce Mason's nostalgic reflection on childhood,

"The End of the Golden Weather"

is Waitemata's next production in the Cellar Theatre. Very much an ensemble piece, the play features a kaleidoscope of eccentric characters from the beach, a thinly veiled Takapuna in the 1930s. There's the athlete Firpo, the local bobby, Sgt Robinson, the Rev Thirle, and a host of others. The End of the Golden Weather reminds you when summer is really over and childhood is at an end. The show opens on Wednesday 2 April and runs till Saturday 12 April, matinees 2pm Saturday 5 and Sunday 6, no performance Monday 7.

Tickets: \$18 & \$15. Bookings ph Bob 838-7361.



Arts Out West

Corban Estate Arts Centre

426 Great North Rd, Henderson. Open 7 days
10am—4.30pm. Ph 838 4455 Fax 838 4488
info@ceac.org.nz website www.ceac.org.nz



CEAC holds regular, changing exhibitions. The gallery shop features a range of quality ceramics, jewellery, books and art works.

Exhibition Program

Trish Campbell: Tour of Duty

- A Tribute to Domestic Toil
Friday 11 April - Sunday 11 May.
Opening: Thursday 10 April, 6pm
Tour of Duty pays tribute to the domestic warrior.



Trish Campbell, Tour of Duty installation Detail

Marica McEwan: HMS Neptune (19 December 1941)

Friday 11 April - Sunday 11 May.
Opening: Thursday 10 April, 6pm.

An installation in memoriam to the 150 New Zealand sailors who lost their lives on board the HMS Neptune in December 1941.

Waitakere Central Community Art Council: home/front/line

Friday 11 April - Thursday 11 May 2008. Opening: Thursday 10 April, 6pm.
In remembrance of those who lost their lives to war, the members of the WCCAC will exhibit works depicting images of the home front or the front line.

Various artists: E Hanga nga Tahuu Korero - Creating Histories

Friday 16 May - Friday 13 June. Opening Thursday 15 May, 6pm.
Creating Histories: *E Hanga nga Tahuu Korero* celebrates the traditional and contemporary in Maori carving and sculpture.

ARTS SPEAK

On the first Monday of every month at 7pm gather at CEAC to hear guest speakers talk about topical arts related subjects. Entry: Free

Rose Young: Curator of History, Auckland War Memorial Museum
Monday 7 April, 7pm. Rose will speak about aspects of the World War I and II collection held at the Auckland Museum.

Lemi Ponifasio: Monday 5 May, 7pm.

Lemi is the artistic director and founder of 'MAU'. Lemi has been awarded the Creative New Zealand Choreographic Fellowship for 2008 and will speak about his work and the principles that drive MAU's vision.

EVENTS AND FESTIVALS

Kids Art Festival: Saturday 17 May 10am - 4pm. Free entry

This festival will provide a diverse and stimulating range of visual and performing arts experiences for children aged 5 to 14 years utilizing the various spaces and venues around the Corban Estate.

The theme for Kids Art Festival 2008 is *Turangawaewae – A Place to Stand Tall*. This theme promotes the festival as a place and time for children to be who they are, and express themselves through different art-forms. The festival includes an exhibition of children's art, live performances and plenty of hands-on creative activities. There will be activities for everyone to get involved in, such as painting, clay work, paper making, junk art assemblages, weaving, printmaking, building a sculpture, and storytelling. It's a great opportunity for children and their parents or caregivers to get creative together.

Matariki Short Film Night. Friday 30 May, 7pm - 9pm

Entry: \$6 (pre-booked, bookings recommended), \$8 on the door
Join us for an evening of short films in celebration of Matariki, the Maori New Year. A programme will be available at www.ceac.org.nz in early May.

ART CLASSES

Children's Holiday Programme

Runs from Monday 21 April - Friday 2 May, please note that Friday 25 April is Anzac Day (Public Holiday). All classes are from 10am - 2.30pm and are two days long. The course fee is \$90 unless otherwise stated (includes materials). Students only need to bring their lunch and an old shirt to protect their clothes. Courses include: Time Travel (8 to 14 yrs), Nature Painting (5-7 yrs), VJ workshop (10 - 16 yrs),

Children's Holiday Programme continued:

Design your own T-Shirt (8 - 14 yrs), Juggling Clowns and Leaping Tigers (5 - 9 yrs), Fantastic Flying Machines (6 - 12yrs), Painting from the Natural World (7 - 14yrs), and Creative Screen Printing (6-14yrs). Subsidies on fees may be available.

Term 2 Adults and Childrens Art Classes

Classes in, painting, drawing, life drawing, pottery, tivaevae, muka weaving, photography, cartooning and more.

Venue hire

CEAC has a variety of rooms available for hire for meetings, workshops, small scale performances and functions at very reasonable rates. Arts and cultural activities have priority use. Hire age for other community activities or private functions can be negotiated on a case-by-case basis.

St Michael's Church

The Old St Michaels Church has recently been renovated and is now available to hire for arts and cultural activities as well as other private and community functions e.g. weddings, christenings.

Chelsea Potters

Community Workshops, 304 Glengarry Rd, Glen Eden.
Ph 813 3824.

Adults and Children's classes available. Beginners, wheelwork, sculpture, any day, after school, weekends and school holidays.
All ages and abilities.

Lopdell House Gallery

418 Titirangi Rd, Titirangi. Open 10am—4.30pm.
Open 7 days. Ph 817 8087 info@lopdell.org.nz
www.lopdell.org.nz

EXHIBITIONS

Second Empire: Gavin Hipkins

Current McCahon House residency artist, photographer Gavin Hipkins, is quite literally bringing the past and present together in his recent series of superimposed images — Second Empire.

Information Recorded: A site-specific project by Justin Morgan

Lopdell House has held many guises – hotel, deaf school, teacher training school and art gallery. Justin is interested in the architecture, history and functions of this grand old folly, and responds with his installation of site-specific drawings, notes, recordings and architectural models. Initially Justin will be working in the gallery and is keen to engage with visitors as his project unfolds.

Openings: Cristina Beth

Working with the themes of layers and openings, local artist, Cristina Beth presents her impressive Whatipu charcoal cave drawings and new 'pod' paintings in the Street Gallery. Cristina's work captures both the vastness, and the sense of enclosure experienced within the Whatipu landscape. The viewer is drawn ever closer to examine the layers of texture and detail that together suggest the transitional space between entrapment and release.

Adam Portraiture Awards 2008

18 April – 8 June 2008. Opening Thursday 17 April, 6pm
New Zealand's premier portrait painting competition, sponsored by the Adam Foundation and the National Portrait Gallery, is held every two years in Wellington. Lopdell House Gallery is delighted to be bringing a selection of this year's best portraits to Auckland.

The Bronze Goat: David Kennedy

Highly acclaimed sculptor and graphic designer, David Kennedy, lived in Titirangi in the 1950s. During that period his stylish and quirky designs created a real buzz in the vibrant Auckland restaurant scene. At Lopdell House Gallery, we'll take you back in time and give you a taste of Kennedy's charm.



The Blue Girl by Johanna Sanders
Winner of the Adam Portraiture Awards.

LOPDELL HOUSE CONTINUED: EDUCATION

Term 2 School Programme: Portraits and Identity

The Adam Portrait Award is our Term 2 exhibition. This is a national competition, which includes over 30 artists work, displaying a wide range of styles and techniques. Children will gain a lot of interpretation skills through unravelling the painter's symbols and signs to help unmask the identity of the person in the painting. Workshop options – cultural collage, fabric class snapshot, paper mask and miniature monsters.

Holiday Programme: 28 April – 2 May. 10 – 2pm - \$30/day

These holidays get along to Lopdell House studio for a week of mixed media fun. Students will create a different artwork each day around the themes of identity/culture/portraits. Humorous self-portraits set in other time zones, magic mosaic mirrors etc. For bookings and details contact Iona Matheson ph 817 8087 ext 204

Lopdell House Studio After School Program: Hands on Clay

Mondays: Come and learn some useful hand building clay skills and create some fantastical objects to decorate and fire in the kiln.

\$120. Bookings ph Karen 817 8968

Wednesdays: Children buzz with the excitement of creating their very own mixed media painting. Suitable children aged 6 – 12 yrs.

\$120 Bookings Kieran 8172810

PUBLIC PROGRAMME

Cruise the Harbour with Stanley Palmer

Lopdell House Gallery and Manukau Harbour Cruises will take you on a magical two-hour cruise, to visit the special places of Stanley Palmer, highly revered painter and printmaker. Tickets cost \$40 and include coffee. Seats are limited so book early (ph 817 8087). Cruises depart from French Bay at 9am on Monday 7 April.

Lunchtime@Lopdell: Music in the Gallery – Free Lunchtime Concerts

This year Lopdell House Gallery will be the venue for a musical feast that includes the NZ String Quartet, Waitakere Orchestra and the MusicSpace Chamber Ensemble. This new venture kicks off in time to celebrate the Titirangi Festival of Music with a Monday lunchtime concert that we hope will become a regular monthly feature and a real treat for the middle of your day. Starting at 1.30pm on 31 March it features the MusicSpace Chamber Ensemble playing Schubert's String Quintet in C Major (D.956). We look forward to seeing you there.

'Pipsies' Children's Book Launch

West Auckland based children's book author Kay Rayner launches her series of children's books based around fun characters 'The Pipsies' who are sure to become favourites with 5-9 year olds. The launch will feature an after-school reading and free giveaways in Lopdell House Gallery at 3.15pm on Friday 11 April.

Pacific Arts & Cultural Centre

Corban Estate, 426 Great North Rd,
Henderson. Ph 838 3205
email: pacificarts@xtra.co.nz or
website: www.pacificarts.org



PACIFICA MARKETS

Every last Saturday of the month 10am-3pm
Authentic handmade arts & crafts, jewellery, art work,
variety of stalls, yummy food, hot & cold beverages, entertainment,
special performances. Come along and have fun.

THE PACIFICA MAMAS SHOP: open Monday – Friday 10am-5pm
authentic arts & crafts, jewellery, tivaevae pillow slips and more.

EDUCATION PROGRAMME

Pacifica Experience workshops for schools.
Music & drumming, weaving with flax, leis, carvings on display
A real Pacifica experience with an Umu kai also available.
Enquires please phone Lorna Andrew, Pacific Arts Centre 838 3205

Packing Shed Gallery & Café

99 Parrs Cross Rd, Henderson. Ph 835 1557
Open 7 days, 10am—4pm. Artwork for sale from a variety of
artists. Cafe open 7 days. Gifts and crafts for sale.
www.thepackingshed.co.nz
Email: packingshed@xtra.co.nz

Art Sale –10 March to 2 April. Come and see the Packing Sheds' first
ever art sale. Contributors include Linda Eccles, Stephen Madden, Noel
Hutchinson and others.

Mike Peck – Photography

3 April to 2 May.

Mike has been developing his photography skills over fifteen years with the help of Liz March's night class at Educoll Tertiary College. He describes his photography are largely eclectic, but with a strong West Auckland flavour.



Mike Peck - photograph

Laya Singh – Landscape Photography. 3 May to 2 June.

Laya is a member of the Titirangi painters group and although draws from her ethnic background when painting this exhibition will mainly be NZ landscapes on canvas.

Eden Room Co-op – Come in and see our new members' craft.

Rutherford College Community Education

Kotuku Street Te Atatu Peninsula Ph 834 4099

Fax 834 4011. Email: commed@rutherford.school.nz

Community Education classes for Term Two, including art, craft and photography courses for adults, commence from May 12. Weeknight and weekend courses are available. Courses include watercolour painting, mosaics, pottery, slip casting, digital photography, basic SLR camera control, flax weaving, bone carving, leadlight and stained glass, jewellery making, textile design with Mixed Media and Sewing.

Class sizes are limited so we advise students to register early. For more information or a copy of our West Auckland booklet ph 834 4099.

Signal Gallery

717 Swanson Rd, Swanson. Ph 833 3479 Until April 6.

Signal Gallery is moving to 505 Highway 16 (1km before Kumeu)

Open Tue-Fri 10-5pm, Sat—Sun 10-4pm.

Email: signalgallery@xtra.co.nz

WYS is WYG. Ross Mellos - Anrew Rankin

Art teachers at Liston College exhibit recent paintings. 27 April - 24 May

TCAC Upstairs Gallery

Level 1, Lopdell House, 418 Titirangi Rd, Titirangi.

Open 7 days, 10am - 4.30pm. Ph 817 8030.

Email: upstairs_lopdell@xtra.co.nz www.upstairs.org.nz

New members are welcome.
Creative Communities small grants for art projects of up to \$500 are available through TCAC. For information on membership, exhibitions and grants please phone or email TCAC or drop in at the Upstairs Gallery,

ECO-LOGICAL Opens Thursday 3 April 6-8pm. Runs until Sunday 27 April.

We expect to have many different mediums and outlooks represented in some thought-provoking artworks depicting "Ecological art is art for ecology's sake". This art attempts to increase the public's awareness of environmental and ecological issues in a different way. Featuring Anne-Sophie Adelys, Russell Rix, Geoffrey Arnold, SALT, James Drumm and KA-LI Art (Lisa Bearsley and Karin Urmersbach-Niersbach creating a glass and textile combination).



Sketch for painting by Anne-Sophie Adelys

PROVOCATIVE ART Opens Thursday 1 May 6-8pm. Until 25 May.

Pierre Lazarus with his Fotocomart original images is a keen photographer and digital computer designer. These 'paintings' are on block mounted canvas. Expect the unexpected with Artworks from classic to provocative.

NGA PUAWAITANGA Opens Thursday 29 May 7-9pm.

Runs until Sunday 22 June.

A 'New Beginnings' theme for a celebration of Matariki running in conjunction with the Auckland Festival of Photography. The Upstairs Gallery is inviting Waitakere artists to join in and be a part of this group exhibition. A range of photographic and digital interpretations from across the different and colourful aspects of our society. What does a 'New Beginning' mean to you?

Waitakere Central Community Arts Council

PO Box 21447, Henderson. Ph 838 5733

"The Studio" at CEAC, 426 Great North Rd, Henderson & Te Whanau Toi, 451 West Coast Rd, Glen Eden.

Email: wccac@xtra.co.nz

Website: www.waitakere-arts.co.nz

Creative Communities small grants for art projects of up to \$500 are available through WCCAC.

Classes at "The Studio"

Illustrate your children's book.

Monday 2 – 4pm

(6wks \$90, needs 6 students to start)

Kids4Art with Marion Sutcliffe.

Thursday from 3.30pm – 5pm, \$15 per session.

Watercolour for beginners with Margaret Norwood. Friday 10 am - 12 noon

Ted's Oil or Acrylic. Tues evenings 7-9pm, Sat 10 am -12 noon and 12.30-2.30pm.

\$15 per session.

Open Days: Monday and Thursday 9am -2 pm, BYO materials, do your own art and be part of a group.

Wednesday Portrait and Life group,

\$6 per session.

10 am -12 noon: Portrait and 1-3 pm: Life.



Artist Peter Purcell shows his work to visitors at 'The Studio' during the Waitakere Artists Open Studio weekend

Classes at "Te Whanau Toi"

Pastel / Line & Wash / Acrylic with Mary Gilligan.

Thursday 10 am – 12noon

Watercolour with Helen Steven,

Thursday from 1 – 3 pm

Open Days: Wednesday and Thursday 10 am – 12 noon, BYO materials.

West Coast Gallery

Old Fire Station, Piha. PO Box 99, Piha. Ph 8128 029

Open Wednesday — Sunday 10am—5pm or by appointment.

Email: enquiry@westcoastgallery.co.nz

www.westcoastgallery.co.nz

EXHIBITIONS:

NIKI PRICE – paper funk – "THREE OF A KIND" 29 March – 20 April

This exhibition explores the idea of grouping together images and similar objects or subject matter into sets of three to become a trio. Using this combination gives the visual effect of stability, evenness and balance. Niki's influences come from a variety of different themes and cultures but she is strongly drawn to images of people and nature and tries to convey this in a light hearted way.



HEATHER-MEG paintings 26 April – 18 May

Bold and colourful work from a bold and colourful person!



SHOW US YA TATTS Photographic Exhibition, 24 May – 15 June

Calling all Waitakere photographers – SHOW US YA TATTS!

Once again the gallery is part of the Auckland Festival of Photography 24 May – 15 June. This exhibition is open to members and all West Auckland photographers. The subject is tattoos. There is a limit of two entries per person and an entry fee of \$5 per photograph. Work to be in the gallery by Sunday, 18 May.

MATARIKI – "Te Mutunga Me Te Timatatanga" 21 June – 13 July (the end and the beginning) 7 brothers – gallery member artists display their recent works, balancing the female energy of the seven sisters of Pleiades.

West Coast Gallery Presents
THE 2008 MASQUERADE BALL

Saturday 12th April - 7pm to 1am. Barnett Hall, North Piha.

The Benka Boradovsky Bordello Band
Tamani - African Drum and Dance Band

Masks essential for entry:
Make your own, or buy one at the Gallery. Masks also available for purchase at the door on the night. Costumes encouraged - Prizes awarded.

Cash Bar and Cafe.

Tickets: Presale \$20. At the door \$25
Available from Gecko, Titirangi Village, and West Coast Gallery, Piha.
Enquiries: 8128 029

MASQUERADE BALL – Saturday 12 April, Barnett Hall, North Piha
The **Benka Boradovsky Bordello Band** and **Tamani – African drum and dance band**. Cash Bar and Café, masks essential for entry, costumes encouraged.

Tickets: presale \$20 on the night \$25 – available from Gecko Titirangi and West Coast Gallery.

If you want a night to remember, don't miss this one!

The gallery is always looking for new member artists. If you are interested please contact the co-ordinator at 8128-029. A portfolio or photos of your work will need to be presented to the committee for approval. Membership is \$15 per year. We are a busy, social, friendly gallery with a wide range of visitors from local to international and everybody in between who love to visit Piha. Ph 8128 029.

Artlink is a FREE newsletter published bi-monthly and supports the promotion of arts and arts-related events in Waitakere City.

If you have material for Artlink, or would like to go on the mailing list, contact

Community Arts Coordinator, Waitakere City Council,
Private Bag 93 109, Waitakere City. Ph 836 8000 extn 8934.

Email: Julie.Nash@waitakere.govt.nz

Fax 09 836 8001.