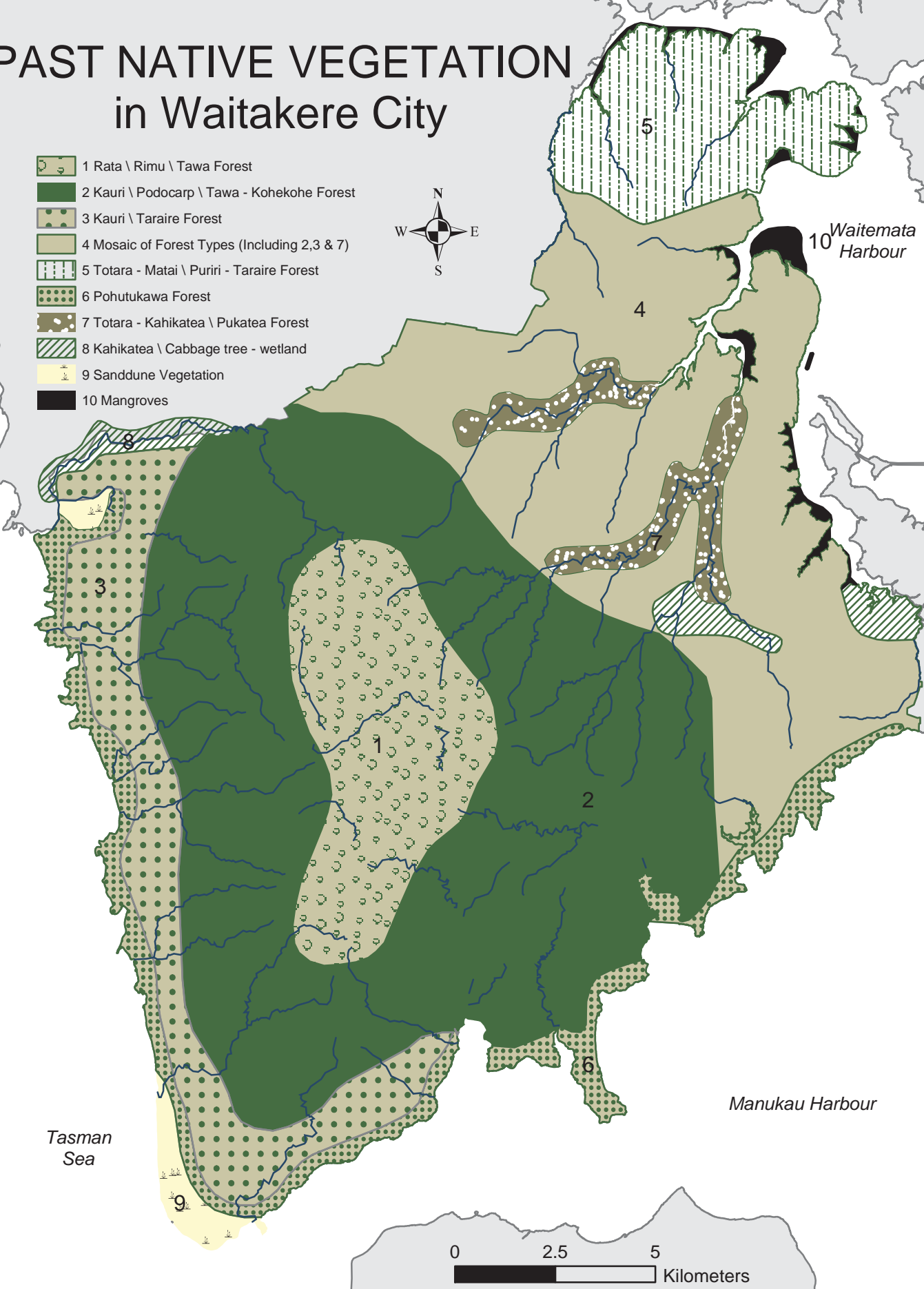


# PAST NATIVE VEGETATION in Waitakere City

-  1 Rata \ Rimu \ Tawa Forest
-  2 Kauri \ Podocarp \ Tawa - Kohekohe Forest
-  3 Kauri \ Taraire Forest
-  4 Mosaic of Forest Types (Including 2,3 & 7)
-  5 Totara - Matai \ Puriri - Taraire Forest
-  6 Pohutukawa Forest
-  7 Totara - Kahikatea \ Pukatea Forest
-  8 Kahikatea \ Cabbage tree - wetland
-  9 Sanddune Vegetation
-  10 Mangroves



Tasman Sea

Waitemata Harbour

Manukau Harbour

0 2.5 5 Kilometers