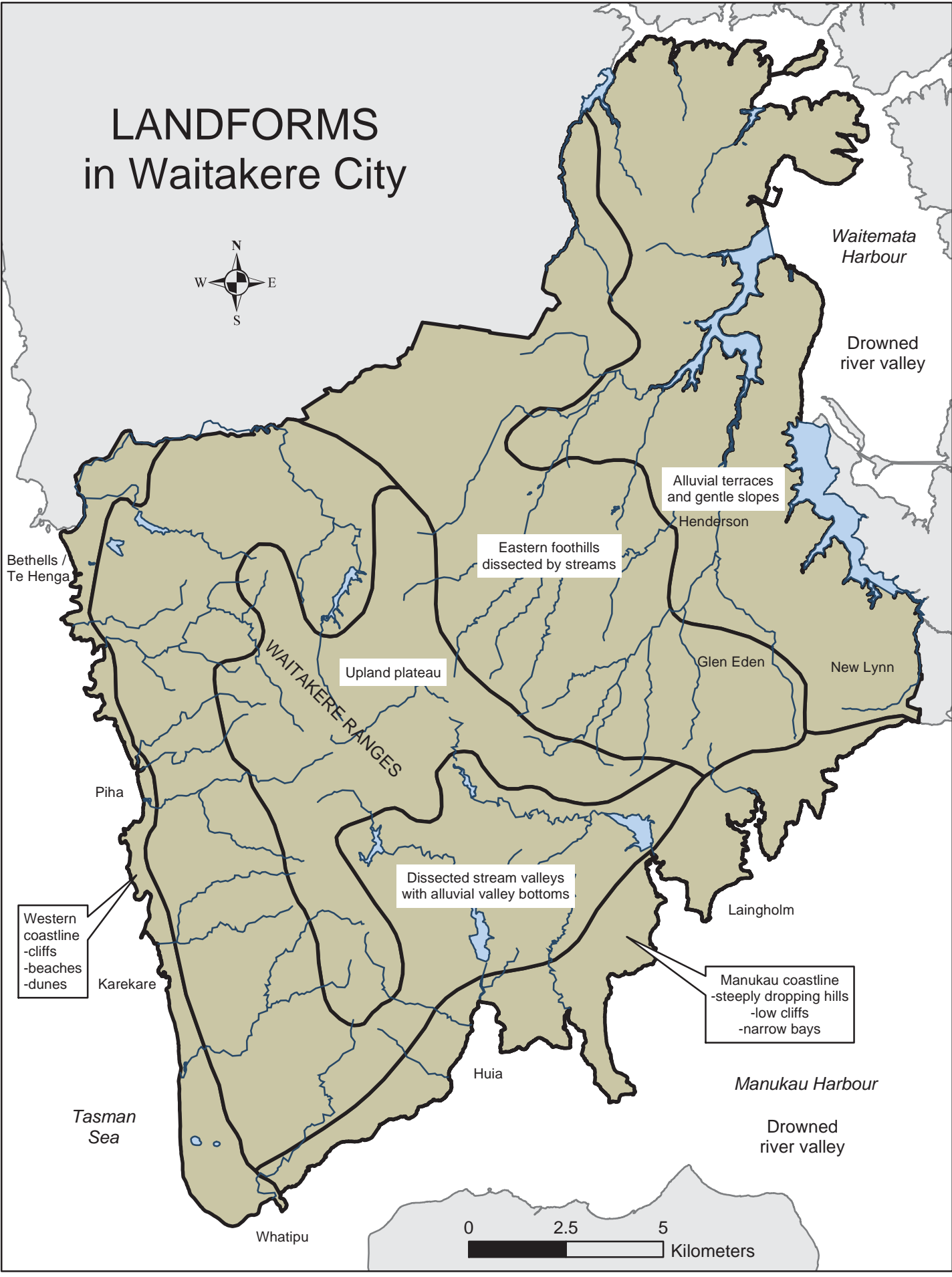


# LANDFORMS in Waitakere City



Waitemata Harbour

Drowned river valley

Alluvial terraces and gentle slopes  
Henderson

Eastern foothills dissected by streams

Upland plateau

Glen Eden

New Lynn

WAITAKERE RANGES

Dissected stream valleys with alluvial valley bottoms

Laingholm

Western coastline  
-cliffs  
-beaches  
-dunes

Karekare

Manukau coastline  
-steeply dropping hills  
-low cliffs  
-narrow bays

Manukau Harbour

Drowned river valley

0 2.5 5 Kilometers

Tasman Sea

Whatipu