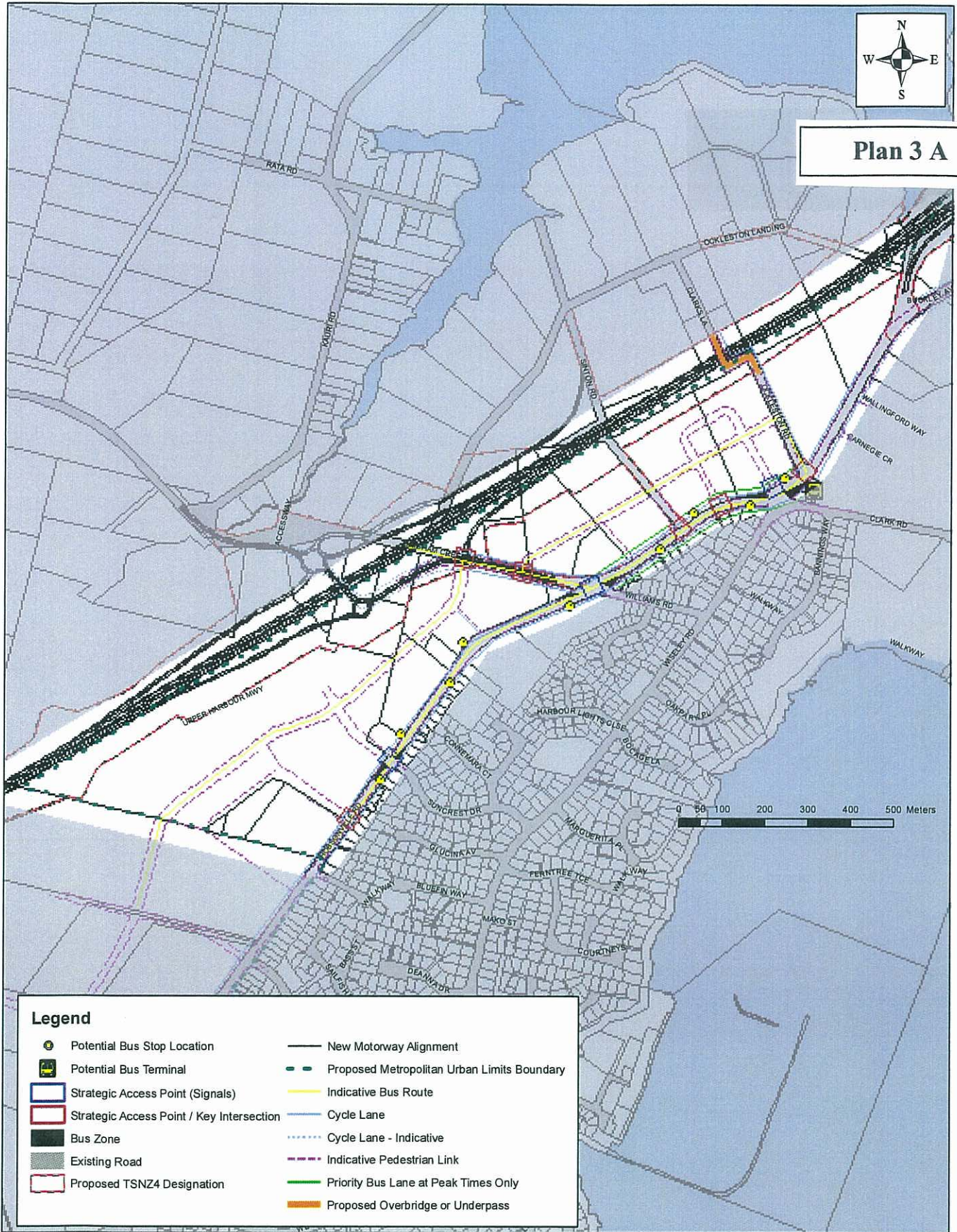




**Plan 3 A**



L:\WCC\_Projects\HD112141\_Rochelle\_HobsonvilleVillage\Mxd\PropPlanChange14b\_Transport.mxd

Scale = 1:10,000 @ A3

Revised Plan Change 14b

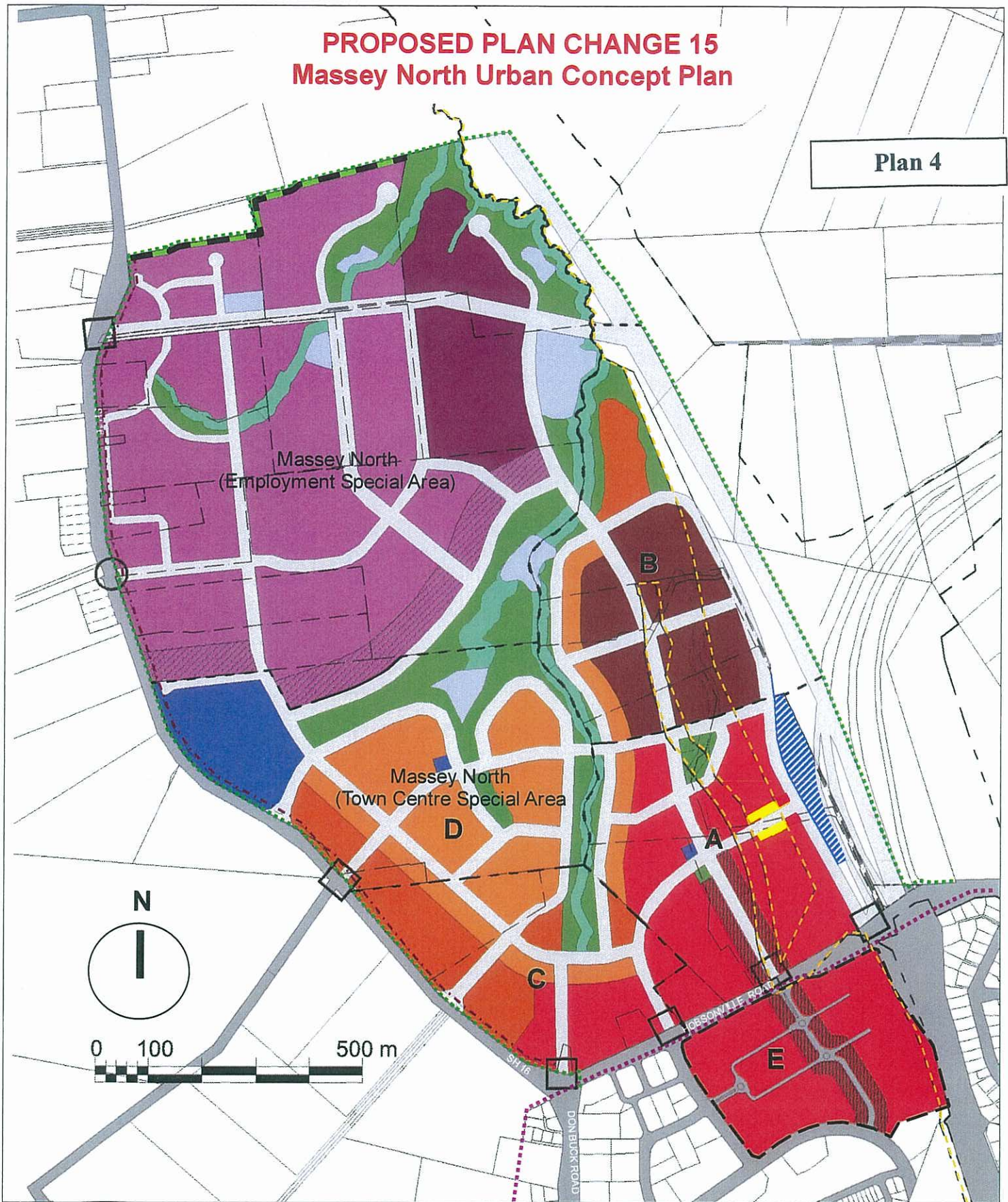
**Hobsonville Village Urban Concept Transport Plan**

DRAFT 4 - as at 18th January 2007



# PROPOSED PLAN CHANGE 15 Massey North Urban Concept Plan

Plan 4



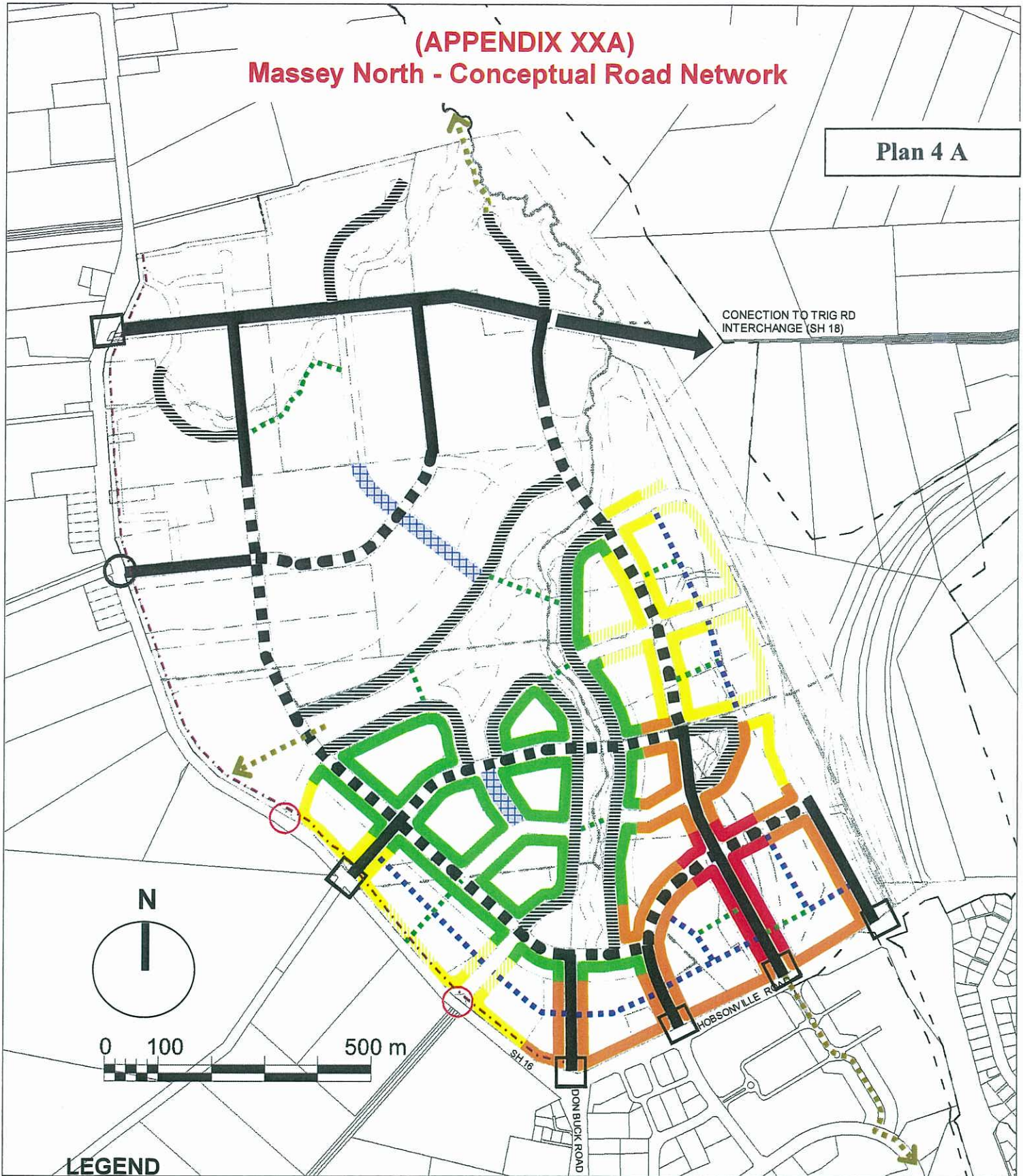
## LEGEND

Town Centre	Industry / Yard Based Retail	ICMP Stormwater Treatment Ponds (including access maintenance and landscaping)	Town Centre Mainstreet
Large Format Retail / Commercial	Bus Interchange / Indicative Location	Indicative Future Road Alignments (refer Appendix XXA)	Existing MUL Alignment
Mixed Use Periphery / Commercial	Indicative Park & Ride location	Existing Roads	Proposed MUL Alignment
Indicative Community Facility locations	Indicative Urban Open (to be consistent with ICMP)	Strategic Access Point s (signals)	10m MUL Landscape Buffer
Apartment Residential	Riparian Margins (refer Natural Environmental Maps)	Strategic Access Point (Roundabout)	10m Landscape Setback along SH16
Industry		Proposed TNZ Designation TSNZ4	Precinct Identifier / Boundary
Building Design Control Frontage			Properties Boundaries

DRAFT 8 — as of 24 October 2006

(APPENDIX XXA)  
**Massey North - Conceptual Road Network**

Plan 4 A



**LEGEND**

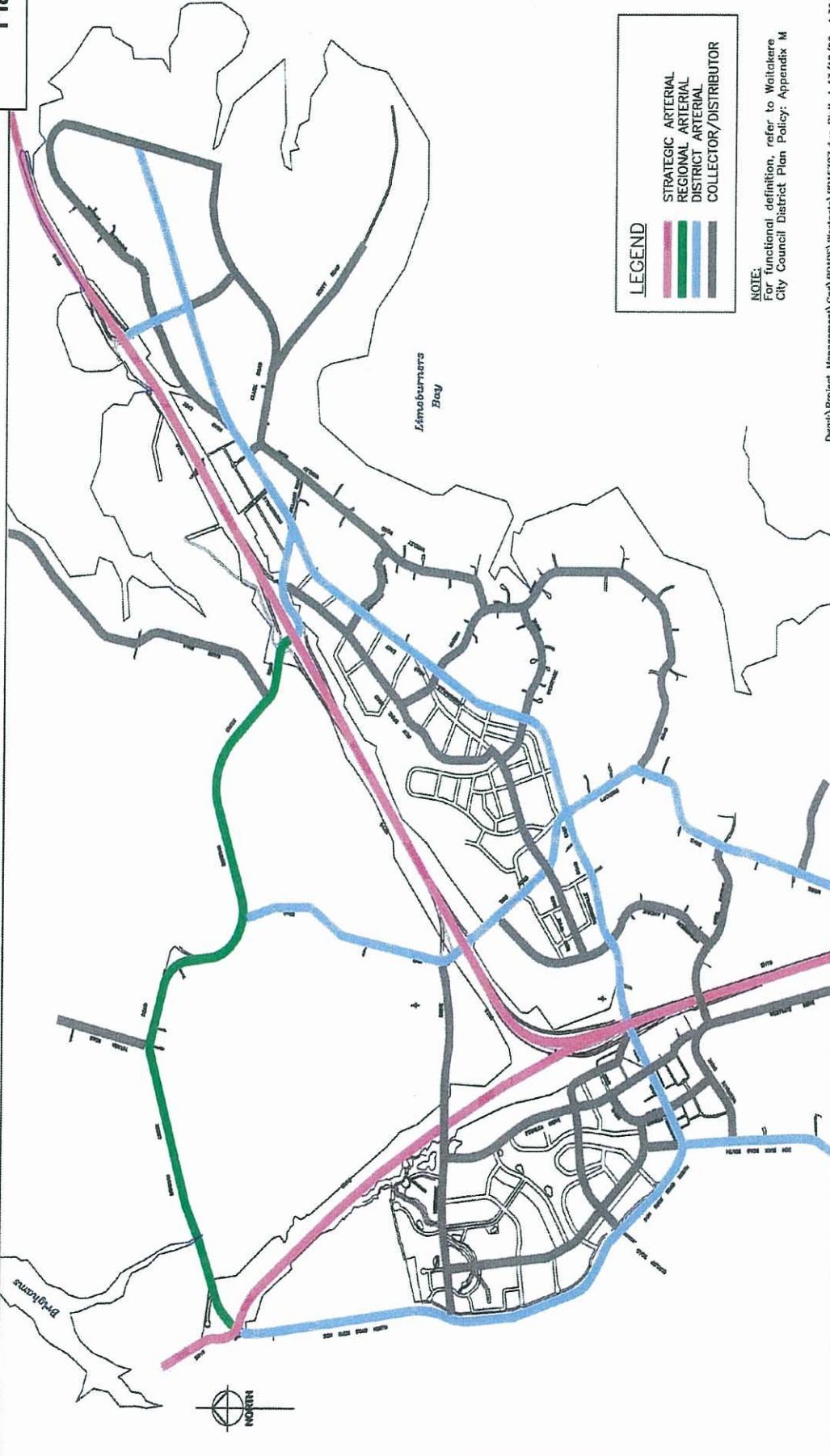
- STRATEGIC ROAD (ALIGNMENT)
- STRATEGIC ROAD (LINKAGES)
- ROAD FRONTAGE TO OPEN SPACE NETWORK
- 'INDICATIVE' FUTURE ROAD ALIGNMENTS
- STRATEGIC ACCESS POINT (SIGNALS)
- STRATEGIC ACCESS POINT (ROUND ABOUT)
- LEFT IN / LEFT OUT VEHICULAR ACCESS — INDICATIVE LOCATION
- INDICATIVE 'CENTRAL' SWALE ROAD
- INDICATIVE PEDESTRIAN LINKAGES
- KEY PEDESTRIAN LINKAGES
- INDICATIVE VEHICULAR ACCESS LANE LOCATIONS
- 10m SETBACK ALONG SH16

**CITY WIDE RULE 3 — BUILDING DESIGN — STREET FRONTAGE TYPOLOGIES.**

Indicative locations to be confirmed by an approved Comprehensive Development Plan

- TOWN CENTRE & MAINSTREET— TYPOLOGY 2
- TOWN CENTRE— TRANSITIONAL COMMERCIAL TYPOLOGY 4
- TOWN CENTRE— "PRIMARY" PERIPHERY TYPOLOGY 6
- TOWN CENTRE— "SECONDARY" PERIPHERY TYPOLOGY 6
- TOWN CENTRE— RESIDENTIAL TYPOLOGY 7

**Plan 5**



**LEGEND**

<span style="color: pink;">—</span>	STRATEGIC ARTERIAL
<span style="color: green;">—</span>	REGIONAL ARTERIAL
<span style="color: blue;">—</span>	DISTRICT ARTERIAL
<span style="color: grey;">—</span>	COLLECTOR/DISTRIBUTOR

**NOTE:**  
For functional definition, refer to Waitakere City Council District Plan Policy: Appendix M

D:\git\Project Management\Cad\ROADS\Waitakere\0015397.dwg Plotted 13/10/06 1:39 pm

<p><b>W A I T A K E R E C I T Y C O U N C I L</b></p>		<p><b>ORIGINAL Not to Scale</b></p>	
<p><b>NORTHERN STRATEGIC GROWTH AREA</b></p>		<p>SHEET DRAWING No. <b>15397</b></p>	
<p><b>DRAFT ROAD HIERARCHY PLAN</b></p>		<p>1 OF 2 SHEETS</p>	
<p>R.O.H. ASSET MANAGER</p>		<p>CONTRACT No. <b>A4</b></p>	
<p>N/A</p>		<p>ORIGINAL</p>	
<p>PROJECT SERVICES</p>			
<p>DATE</p>	<p>REVISION</p>	<p>BY</p>	<p>DATE</p>
<p>10/06</p>			
<p>10/06</p>			
<p>SURVEYED</p>	<p>DESIGNED</p>	<p>DRAWN</p>	<p>COMPUTED</p>
<p>H.Shen</p>	<p>M.Paget</p>	<p>M.Paget</p>	<p>M.Paget</p>
<p>DWG CHK</p>	<p>DGN CHK</p>	<p>CAD FILE</p>	
<p></p>	<p></p>	<p></p>	<p></p>