

# Walking and Cycling Network

Plan 6

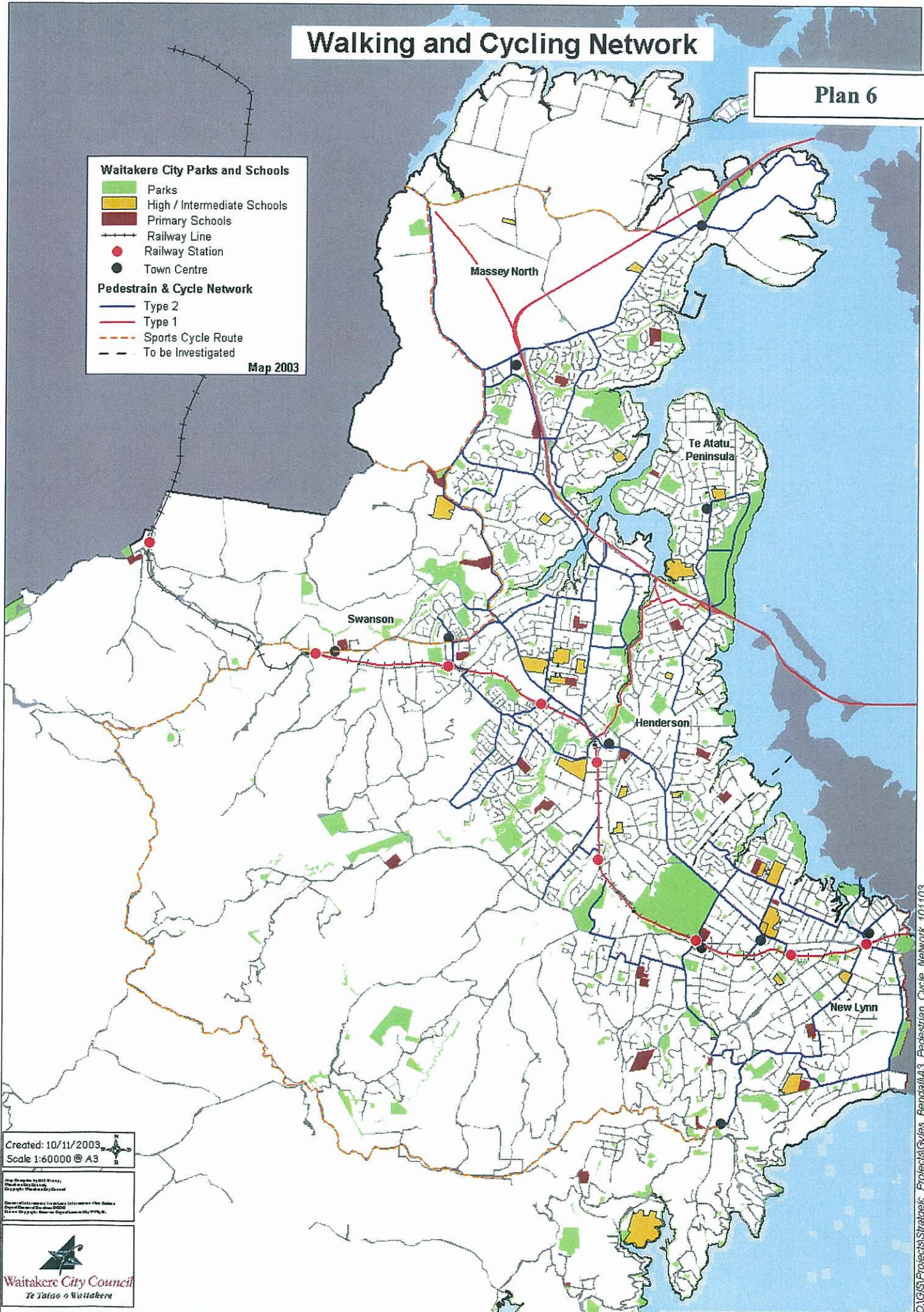
## Waitakere City Parks and Schools

- Parks
- High / Intermediate Schools
- Primary Schools
- Railway Line
- Railway Station
- Town Centre

## Pedestrian & Cycle Network

- Type 2
- Type 1
- Sports Cycle Route
- To be Investigated

Map 2003



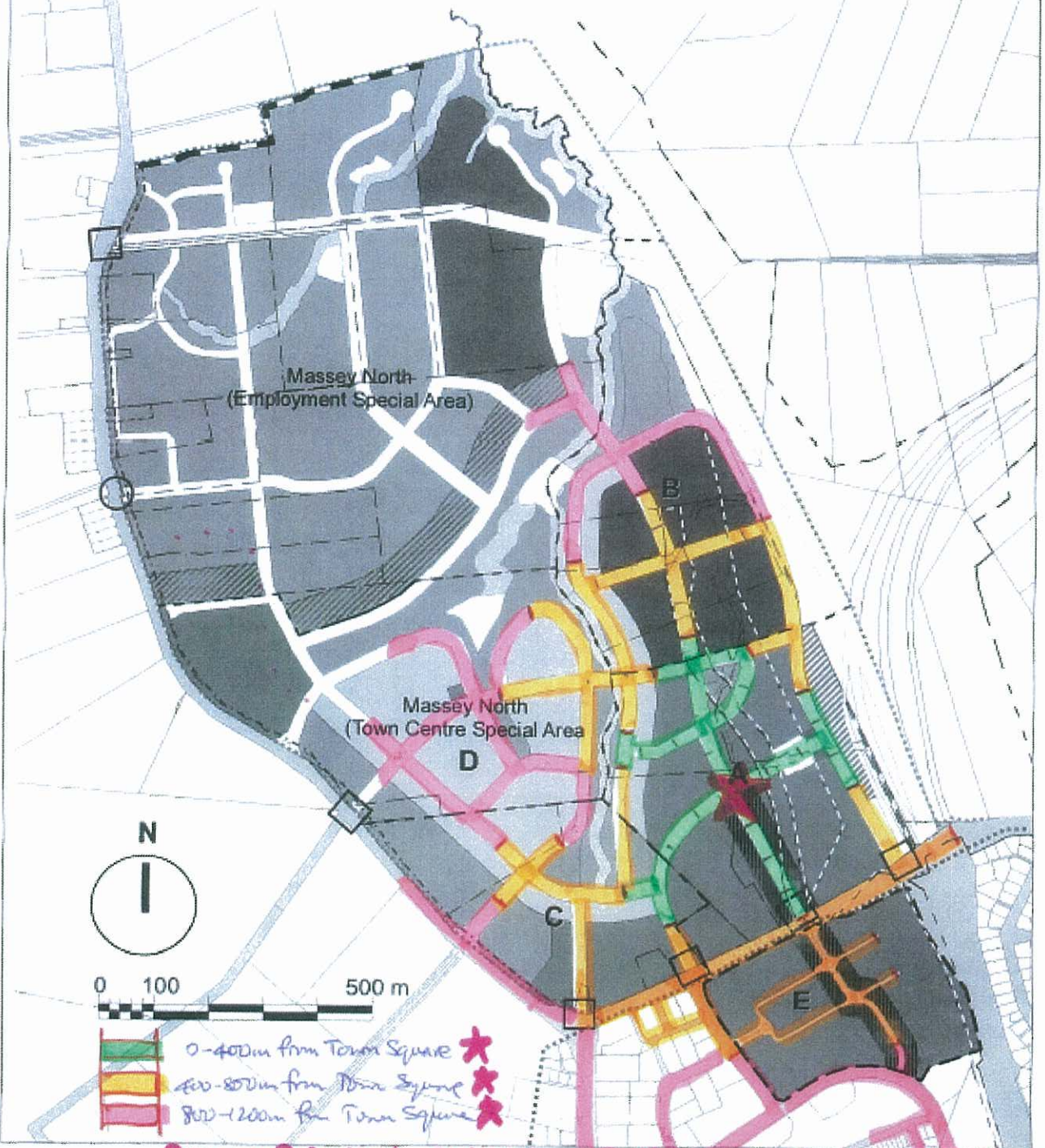
Created: 10/11/2003  
Scale 1:60000 @ A3

Map 2003  
Downloaded from the Waitakere City Council website  
© Waitakere City Council 2003





PROPOSED PLAN CHANGE 15  
Massey North Urban Concept Plan



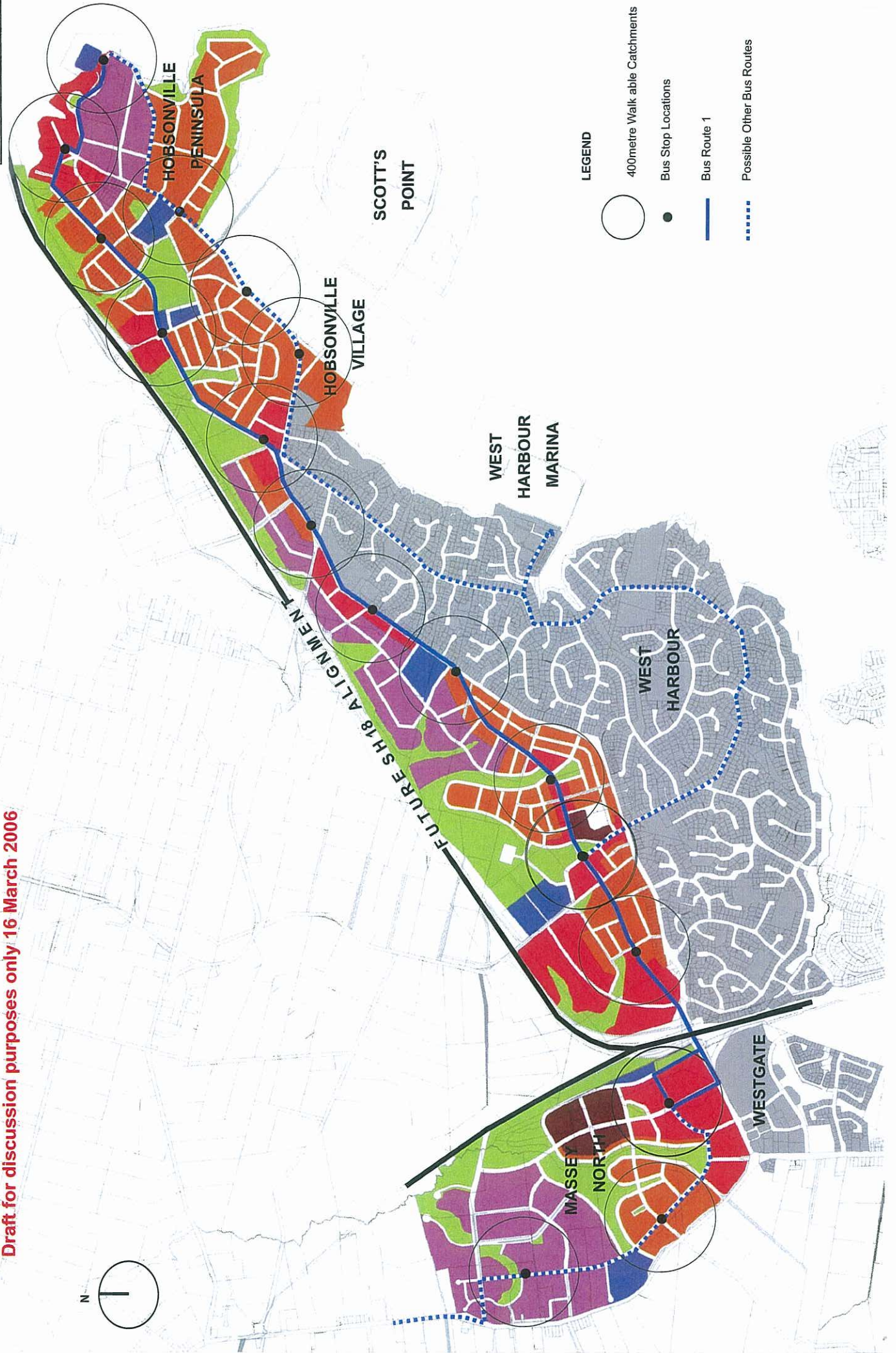
LEGEND

- |   |   |   |                                  |
|---|---|---|----------------------------------|
| Town Centre                             | Industry / Yard Based Retail                        | ICMP Stormwater Treatment Ponds (including access, maintenance and landscaping) | Town Centre Mainstreet           |
| Large Format Retail / Commercial        | Bus Interchange / Indicative Location               | Indicative Future Road Alignments (refer Appendix XXA)                          | Existing M.U.L. Alignment        |
| Mixed Use Periphery / Commercial        | Indicative Park & Ride location                     | Existing Roads  | Proposed M.U.L. Alignment        |
| Indicative Community Facility locations | Indicative Urban Open (to be consistent with ICMP)  | Strategic Access Point (signals)  | 10m M.U.L. Landscape Buffer      |
| Apartment Residential                   | Riparian Margins (refer Natural Environmental Maps) | Strategic Access Point (Roundabout)   | 10m Landscape Setback along SH16 |
| Industry                                |   | Proposed TNZ Designation TSNZ4  | Precinct Identifier / Boundary   |
| Building Design Control Frontage        |   |   | Property Boundaries              |

# PASSENGER TRANSPORT 2021

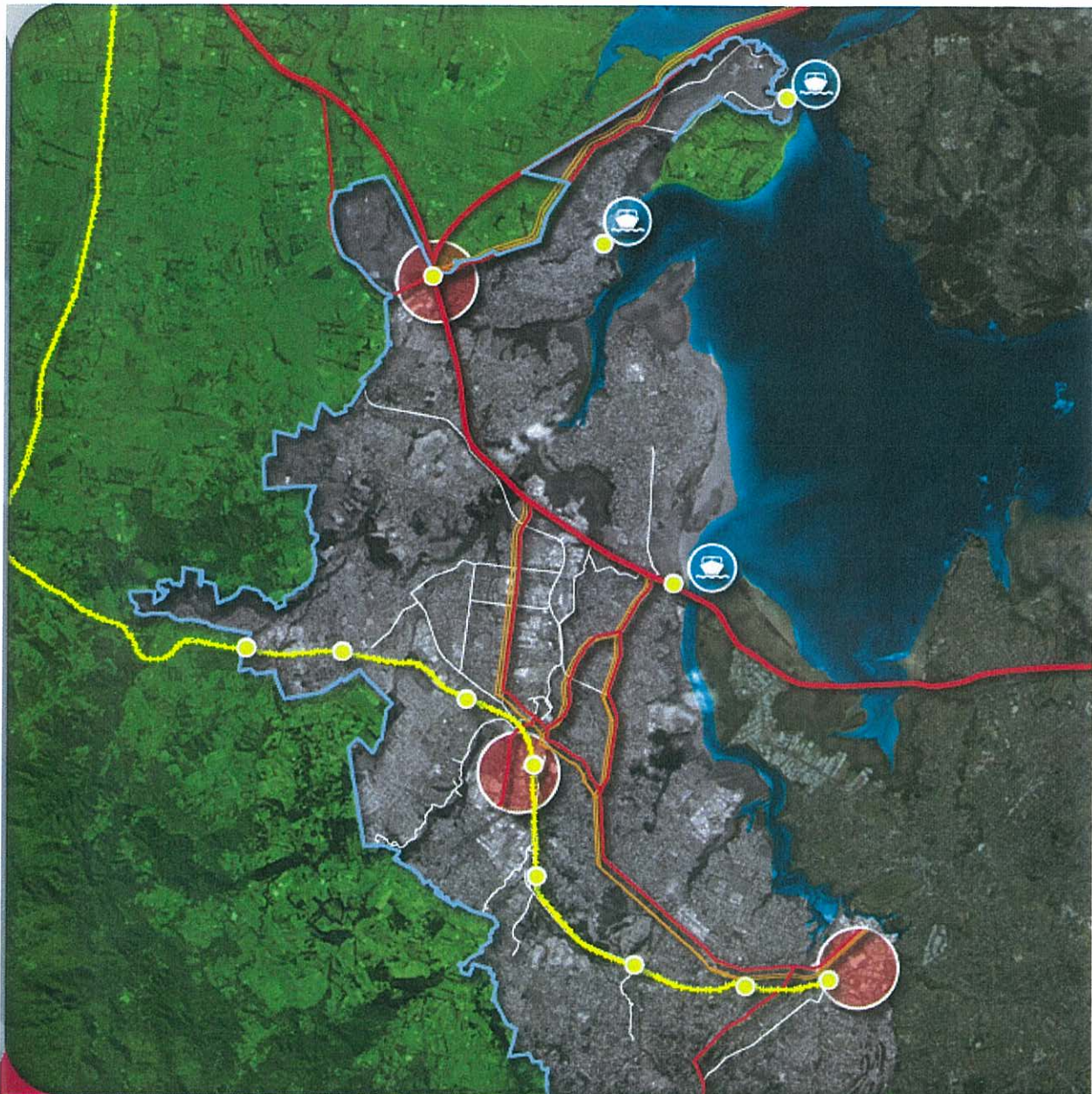
Plan 9

Draft for discussion purposes only 16 March 2006



### LEGEND

- 400metre Walk able Catchments
- Bus Stop Locations
- Bus Route 1
- - - Possible Other Bus Routes



33

### WCC Transport Strategy Priorities – Investment Prioritised in Centres and Corridors

#### Key

Yellow line = rail

Yellow circles = rail / bus / ferry interchanges that WCC will support with investment including as relevant park and ride, interchange, ped / cycle access. (Te Atatu ferry is suggestion)

Orange lines and red circles = areas for bus priority measures

Red lines and red circles = priority areas for road investment

White lines – priority cycle expenditure