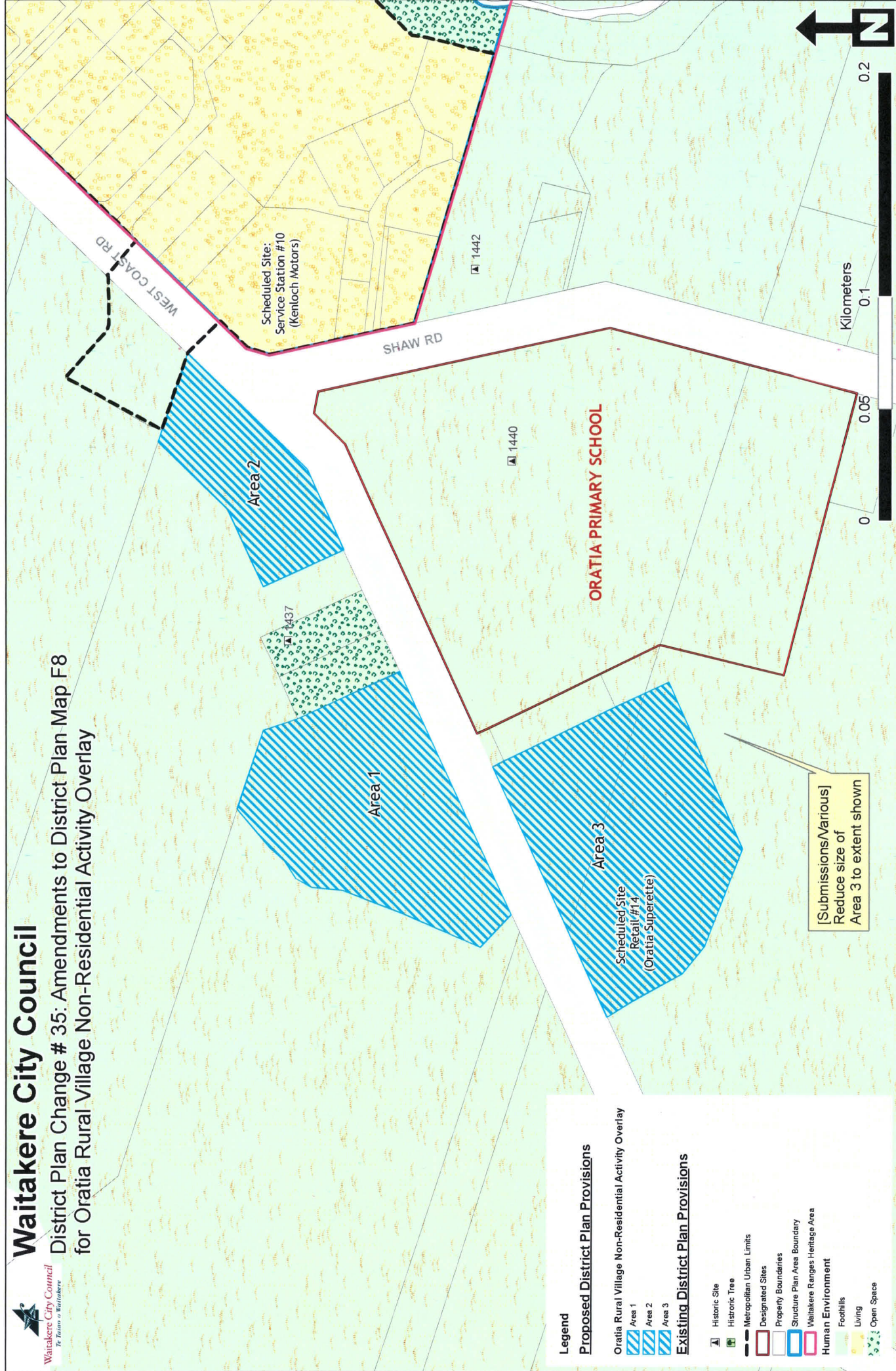




Waitakere City Council

District Plan Change # 35: Amendments to District Plan Map F8 for Oratia Rural Village Non-Residential Activity Overlay



Legend

Proposed District Plan Provisions

- Oratia Rural Village Non-Residential Activity Overlay
- Area 1
- Area 2
- Area 3

Existing District Plan Provisions

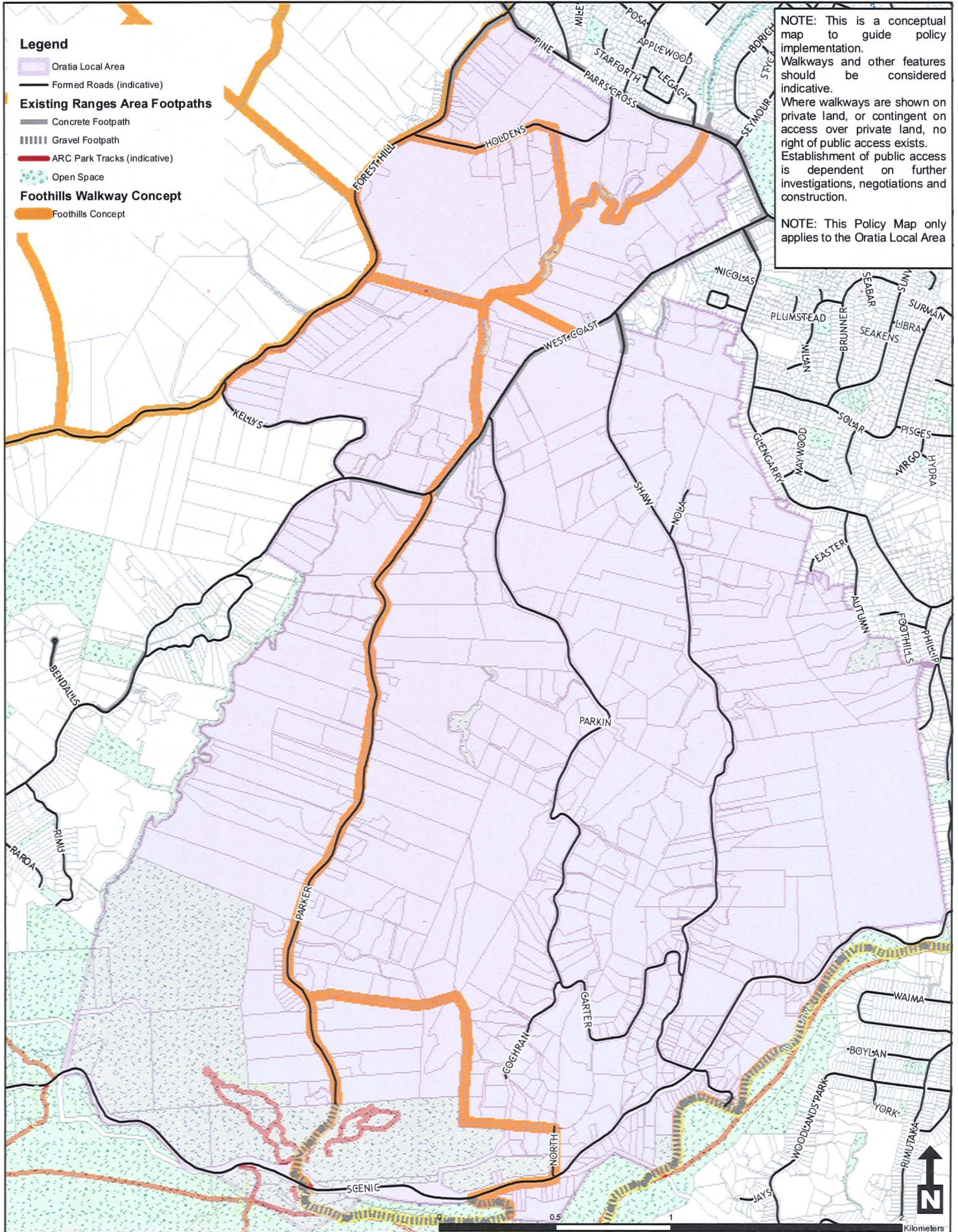
- Historic Site
- Historic Tree
- Metropolitan Urban Limits
- Designated Sites
- Property Boundaries
- Structure Plan Area Boundary
- Waitakere Ranges Heritage Area
- Human Environment
- Foothills
- Living
- Open Space

[Submissions/Variations] Reduce size of Area 3 to extent shown



Oratia Rural Village: Non-Residential Activity Overlay

Decisions Version: October 2010



Policy Map 5B 3.1.3: Oratia Local Area - Foothills Walkway Concept

Indicative Public Walking, Cycling and/or Bridle Paths

APPENDIX B

APPENDIX B

Plan Change 35 – Waitakere Ranges Heritage Area District Plan Section, Oratia Local Area Plan, Waiaatarua Local Area Plan and Oratia Rural Village

Pursuant to Clause 10 of the First Schedule of the Resource Management Act 1991, the relief sought by the following submissions is rejected or accepted as indicated. Further submissions made in support or opposition of primary submissions are accepted or rejected accordingly.

A discussion relating to each submission is contained in Section 5 of the Decision Notice.

Accepted:

35/3, 35/7, 35/92,35/93, 35/94, 35/95, 35/96, 35/97, 35/98, 35/99, 35/100, 35/101, 35/102, 35/103, 35/104, 35/105, 35/106, 35/107, 35/108, 35/109, 35/110, 35/111, 35/112, 35/118, 35/124 and 35/127

Accepted in Part:

35/56, 35/59, 35/60, 35/64, 35/72, 35/74, 35/76, 35/81, 35/82, 35/83, 35/87, 35/89, 35/91, 35/111, 35/112 35/121

Rejected in part:

35/2, 35/4, 35/5, 35/6, 35/8, 35/9, 35/10, 35/11, 35/12, 35/13, 35/14, 35/15, 35/16, 35/17, 35/18, 35/19, 35/21, 35/22, 35/23, 35/24, 35/26, 35/27, 35/28, 35/29, 35/30, 35/31, 35/32, 35/33, 35/34, 35/36, 35/37, 35/38, 35/39, 35/40, 35/41, 35/32a, 35/33a, 35/34a, 35/35a, 35/36a, 35/37a, 35/38a, 35/39a, 35/40a, 35/43, 35/44, 35/45, 35/46, 35/47, 35/48, 35/49, 35/50, 35/51, 35/52, 35/53, 35/54, 35/55, 35/56, 35/57, 35/60 35/64, 35/65, 35/66, 35/67, 35/68 35/70, 35/71, 35/72, 35/73, 35/81, 35/82, 35/83, 35/84, 35/85, 35/87, 35/89, 35/91, 35/111, 35/112, 35/113, 35/114, 35/116, 35/116, 35/123, 35/127

Rejected:

35/35, 35/41a, 35/78 and 35/126
