

- Invest in Mana Whenua capability and capacity to actively contribute to decision-making and exercise kaitiakitanga by:
- Strengthen decision-making relationships
- Resource Mana Whenua forum

A.1.3 PROGRESS TO DATE

Regional Hui

A regional hui held at the ARC Chambers on 30 November 2007 formerly resolved to formerly establish an interim regional mana whenua forum establishment group to further develop the scope, purpose, role and function of the forum.

A further hui held at Nga Kete Matauranga Marae, Manukau Institute of Technology in December 2007, further resolved to hold hui amongst iwi at a sub regional level, within the rohe of Ngāti Whatua, Ngāti Wai, Haureki and Waikato.

Throughout January and March hui were held across the iwi of the region, seeking feedback on the work to date, seeking representation on the establishment group and discussing mana whenua representation on the RSDF.

An outcome of these sub-regional hui has been the proposed development of sub-regional clusters which are currently in progress including;

- Ngāti Whatua (Te Runanga o Ngāti Whatua, Te Uri o Hau, Ngāti Whatua Nge Rima o Kaipara and Ngāti Whatua o Orakei)
- Ngāti Wai (Ngāti Wai Trust Board, Ngāti Manuhiri and Ngāti Renua)
- Maurtuaahu/ Ngai Tai (Ngāti Paoa, Ngāti Whanaunga, Ngai Tai, Ngāti Maru and Ngāti Tamatera)
- Manuka/ Waiohua (Ngāti Te Ata, Ngāti Tamaoho, Ngāti Te Akitai, Ngāti Te Ahiwaru and Kawerau a Maki)

The establishment group has been meeting since April 2008. It includes the following representatives who have been appointed through the clusters and are reporting back to them on progress:

Lucy Tukua (Convenor – previous working party member)

David Taipari (Ngāti Maru)

Roimata Minhinnick (Ngāti Te Ata)

Jane Sherard (Ngāti Whatua – previous working party member)

Te Pania Kingi (Ngāti Whatua)

All

Mike Baker (Ngāti Whānau)

Michelle Wilson (Ngāti Pāoa)

Mook Hohneck (Ngāti Māhū -- previous working party member))

Bruce Davies (Ngāti Rehua -- previous working party member))

Resourcing

To date the ARC has provided direct resourcing and officer support to mana whenua for the development of Te Kohao o Te Ngira and the establishment of the Regional Mana Whenua Forum.

An initial funding proposal for the establishment of the regional mana whenua forum was tabled to the RPSG (August 2007) and a sub-group was established to discuss the proposal and wider matters concerning the ongoing engagement with mana whenua and wider Māori communities. The sub-group made up of mana whenua (Lucy Tukua), Local Government (Ann Magee ARC, Graeme Campbell WCC, Johnnie Freeland ARC, Naomi Craymer ARC) and Central Government (Tanya Perrott GJEDO).

The ARC has maintained its existing commitment in resourcing the mana whenua process. Other Councils are yet to consider their response to the proposal.

The proposal was passed on to the Department of Internal Affairs to consider the central government response. DIA declined the request for resourcing as it was beyond their role or capacity to resource the proposal.

Currently the establishment group is developing a second funding proposal as part of its business case for the Regional Mana Whenua Forum.

The establishment group will look to table the business case at a future RPSG meeting, and will be seeking to meet with the Combined CE Steering Group, to further discuss progressing the work around the Regional Mana Whenua Forum.

It is suggested that the RPSG sub-group liaise with the mana whenua establishment group to finalise the business case for the regional mana whenua forum.

Regional Sustainable Development Forum

Mana whenua have signalled a clear desire to be represented on the RSDF and discussions amongst mana whenua have focused on the development of a representation model that both serve the needs of the RSDF and mana whenua. The work in establishing the Regional Mana Whenua Forum is seen as critical by iwi in affirming the representation issues for regional matters.

The RSDF is seen in the wider context of regional governance as there are other regional fora that require mana whenua/ Māori representation including the Regional Economic Development Forum, Hauraki Gulf Forum and the Auckland Conservatory Board to name a few.

A112

One Plan

Mana whenua have raised issues relating to the current draft of one plan.¹ Mana whenua are concerned with a failure to maximise or build on the foundation that has been laid through the ASF process. As the key work in formulating the content of one plan has occurred at the officer level through the RPSG, it is critical that a good and productive working relationship between the mana whenua establishment group and the RPSG is built and maintained. This relationship should include frequent and high quality updates, communications and interactions.

It is therefore suggested that the RPSG sub-group work with the mana whenua establishment group, to develop a protocol for ensuring adequate support and opportunity for mana whenua establishment group involvement and interaction with the RPSG.

RPSG

The establishment group has resolved that David Taipari, will now act as the central communication link between mana whenua and the RPSG. Initial meetings will take place prior to the next RPSG to brief David, with the view to starting to resolve some of the RSDF concerns around the Māori elements of one plan.

RECOMMENDATIONS

- a) That the report be received.
- b) That the RPSG sub-group liaise with the mana whenua establishment group to finalise the business case for the regional mana whenua forum.
- c) That the RPSG sub-group develop a protocol for ensuring adequate support and opportunity for mana whenua establishment group involvement and interaction with the RPSG.
- d) That the RPSG sub-group prepare a paper on behalf of the RPSG for consideration by the Combined CE's Steering Group on progress made to date to establish the Regional Mana Whenua Forum, to include the issues raised in this report.

¹ These issues were raised at the last RSDF workshop held in May 2006. A progress paper was also presented at the workshop by Lucy Tukua and Jane Sherard which is attached to this report.

A113

REPORT TO THE COMBINED CES STEERING GROUP

16 May 2008

One Plan Options for Consultation Report

Purpose of Report : One Plan Options for Consultation Report
Reporting From : Peter Winder, CE, Auckland Regional Council
Reporting Officer/s : Lesley Baddon
Date : 14 May 2008

1. SUMMARY

At their 28 March 2008 workshop the Regional Sustainable Development Forum (RSDF) requested that officers prepare a paper on the options and issues for consultation on One Plan for the Auckland Region (One Plan).

This report outlines, in brief, the proposed approach to consulting on One Plan with three identified audiences; the general public, One Plan key partners and One Plan key stakeholders.

2. RECOMMENDATIONS

- a) That the Combined CEs Steering Group endorse the consultation process for One Plan version 1 outlined in this report, subject to any amendments suggested by the Steering Group, in order that this report may form the basis of the officers report for RSDF for 30th May on the One Plan Proposed Stakeholder Engagement to be undertaken between 30th May to the 19th September 2008.
- b) That the Combined CEs Steering Group instruct the Director's Group to sign-off the officers report for RSDF for 30th May on the One Plan Proposed Stakeholder Engagement to be undertaken between 30th May to the 19th September 2008

3. PURPOSE

The purpose of this report is to seek feedback and approval from the Steering Group in order to provide the RSDF with an options and issues paper on a process for gaining stakeholder input and feedback on One Plan version 1, to be discussed at the RSDF 30th May meeting.

4. BACKGROUND

This report follows two resolutions by the RSDF concerning the consultation intended to take place around One Plan. At its inaugural meeting on 22 February 2008, the RSDF determined:

A114

That the forum supports full public consultation on One Plan (version 1) in March – April 2009, using where possible existing Long Term Council Community Plan processes.

However, on 28 March the RSDF passed the following resolution:

That officials report back to the forum on issues and options in relation to public consultation on the One Plan.

Officers have therefore been investigating an appropriate approach for consultation in light of the RSDF's request. In consequence, officers consider that progress made on the development of One Plan since February does not necessitate making significant changes to the original resolution on public consultation for version one.

However, it should be noted that to date, officer reports to the RSDF on consultation have been focussed on One Plan version 1, and that these reports have indicated that longer term, a special One Plan consultation process could be developed .

5. PROPOSED APPROACH FOR CONSULTATION ON ONE PLAN

As discussed in the previous section of this report, consideration of the consultation process for One Plan has to date been limited to One Plan version 1. It is acknowledged that as One Plan develops and the actions become more comprehensive, a specific One Plan consultation process may need to be developed. However, in version 1 a significant proportion of the actions to be included have already been subject to some form of community engagement and consultation. Furthermore, version 1 of One Plan is intended to build on existing regional strategies which have also been subject to required consultation processes.

The objectives for consultation on One Plan overall are:

- a) To ensure that the region's stakeholders can make an informed and meaningful contribution to the development of the One Plan for Auckland.
- b) To ensure that we are fulfilling any statutory requirements and political requests for consultation on One Plan for Auckland and the other plans that will come under its umbrella. This includes the RGS, RLTS, AREDS and ASF.

Reflecting the previous discussion, this paper proposes a process for stakeholder engagement on One Plan version 1, to develop it from draft to final form between 30th May and 19th September 2008.

Officers have identified three audiences with whom consultation on One Plan will need to occur, these are:

- the general public,
- One Plan key partners - central and local government and Mana Whenua, and
- One Plan key stakeholders - implementation partners.

The proposed approach to consultation is therefore broken up by audience group below;

AUS

General Public

Consultation with the general public will be focused on what One Plan version 1 will deliver for Auckland's residents and will therefore primarily involve feedback on the One Plan programmes of action, and the infrastructure plan.

The final report on Strengthening Auckland's Regional Governance last year suggested that given the potential funding and implementation commitments for councils party to One Plan version 1, those local authorities should consult with the public on their detailed proposals through their LTCCPs and annual plans.

Officers will therefore seek to enforce the forum's original resolution of 22 February that public consultation be delivered in March – April 2009 using where possible the existing Long Term Council Community Plan processes. This is also a preferred option given that, as reported to the RSDf at its 22 February meeting, it is anticipated that many One Plan (version 1) programmes will have already been subject to some form of community engagement and consultation, consultation duplication and fatigue should therefore be avoided where possible.

An option for wider public consultation

However, to ensure that public feedback is provided early in the One Plan process, the draft version of One Plan version 1 will be available on the website, and informal comment could be invited.

Consulting	Mechanisms	Collecting Feedback
General Public	<ul style="list-style-type: none">• 2009-2019 LTCCP consultation process• Posting of the Plan on the One Plan website for informal comments	<ul style="list-style-type: none">• Submissions to local authorities• Feedback through web forum

Key Partners

The table below identifies those organisations thought to be key partners in the One Plan process. These partners have been, or will be, involved in the One Plan decision process. These parties will therefore be consulted on One Plan in its entirety, following the endorsement of the draft One Plan version 1 on May 30.

For these parties, consultation will occur through each organisation's normal internal processes, however, efforts will be made to ensure that the information conveyed is robust, consistent, well designed and targeted to achieve optimum response across all groups.

A116

Consulting	Mechanisms	Collecting Feedback
<p>Key Partners:</p> <ul style="list-style-type: none"> • Rodney District Council • Waitakere City Council • North Shore City Council • Auckland City Council • Franklin District Council • Manukau City Council • Papakura District Council • Auckland Regional Council • Northland/Waikato Regions 	<ul style="list-style-type: none"> • Call for submissions • Formal reporting mechanisms within each organization via committee • Common Briefing pack and agenda items • One Plan Website • Briefings to individual councillors 	<ul style="list-style-type: none"> • Formal reports
<ul style="list-style-type: none"> • Mana Whenua Establishment Group 	<ul style="list-style-type: none"> • Call for submissions • Through the Mana Whenua Forum • Common Briefing pack and agenda items 	
<ul style="list-style-type: none"> • Ministry and Minister of Economic Development • Ministry and Minister of Social Development • Ministry and Minister for the Environment • Department of Internal Affairs • Te Puni Kokiri • Department of Labour • Department of Immigration, • Tertiary Education Commission • Ministry and Minister of Transport • Housing Corporation New Zealand • Treasury 	<ul style="list-style-type: none"> • Call for submissions • DIA to complete on behalf of central government • Common Briefing pack and agenda items 	

A17

<ul style="list-style-type: none"> • Department of Prime Minister and Cabinet • Regional Policy Steering Group • Transit New Zealand 		
---	--	--

Key Stakeholders

This is a critical area for consideration as the process over the next few months is the first formal engagement between the RSDF partnership and its key stakeholders. If designed and delivered well, the foundations for a long and productive relationship could be put in place. It is also not just about informing and engaging, it is also potentially the first step in a process to negotiate the scope and extent of stakeholder participation in One Plan, and how One Plan could influence their decisions and activities going forward.

The table below lists those parties identified by officers, to date, as key stakeholders in the outcome of One Plan version 1. These stakeholders can be grouped into:

- those with an ongoing role in One Plan, for instance infrastructure providers
- those that have been identified as being important to the delivery of the programmes for version 1
- those that may be involved in future version of One Plan, or that could be drawn into current programmes as these are developed.

In practice, stakeholders are often likely to fall into more than one of these categories. The extent of engagement will depend on the extent of potential influence that individual stakeholders will have on the delivery of the intended outcome. In some instances, organisations listed below will be partners in the implementation of the One Plan programmes. Therefore, consultation with these groups will be designed to inform and engage them in the One Plan version 1 process as well as to bolster their support for and role in, the success of the One Plan programmes of action.

Given the scope of participation by these organisations, consultation will be customised for each, and will include individual face to face engagements focusing on each stakeholder’s area of involvement in the Plan i.e. through the programmes of action or the infrastructure plan.

As the purpose of this consultation will be to bolster support from these key stakeholders, the consultation process will also build on the key messages behind the One Plan including the view to the longer term One Plan approach.

Informing, engaging and bolstering support	Mechanisms	Collecting Feedback
---	-------------------	----------------------------

A118

<p>Key Stakeholders and Implementation Partners:</p> <ul style="list-style-type: none"> • Auckland Regional Transport Authority • Auckland Regional Holdings • Water supply & wastewater (Watercare) • Energy providers • Auckland International Airport Limited • Ports of Auckland Limited • Broadband providers i.e. Telecom, Vector • Auckland Regional Broadband Advisory • RWC 2011 Steering Group • Tourism Auckland • Government RWC Co-ordination Office • Waitakere Properties Limited • Economic Development Agencies in the Auckland region <p>Etc.</p>	<ul style="list-style-type: none"> • Call for submissions • Individual face to face engagements focusing on each stakeholder's area of involvement in the Plan • Presentations • Briefing material 	<ul style="list-style-type: none"> • Written responses to call for submissions • One Plan website • Verbal feedback
---	--	--

6.

PROPOSED TIMELINE FOR CONSULTATION

As outlined above, consultation on One Plan version 1 can be broadly split into two timeframes:

A119

- a) public consultation which could occur in March – April 2009 through the LTCCP process and therefore following the endorsement of the final One Plan version 1 in September 2008, and
- b) the key partner and key stakeholder consultation which could occur following the endorsement of the draft One Plan version 1 in May but with time for consideration by the RSDF before the final One Plan version 1 in September

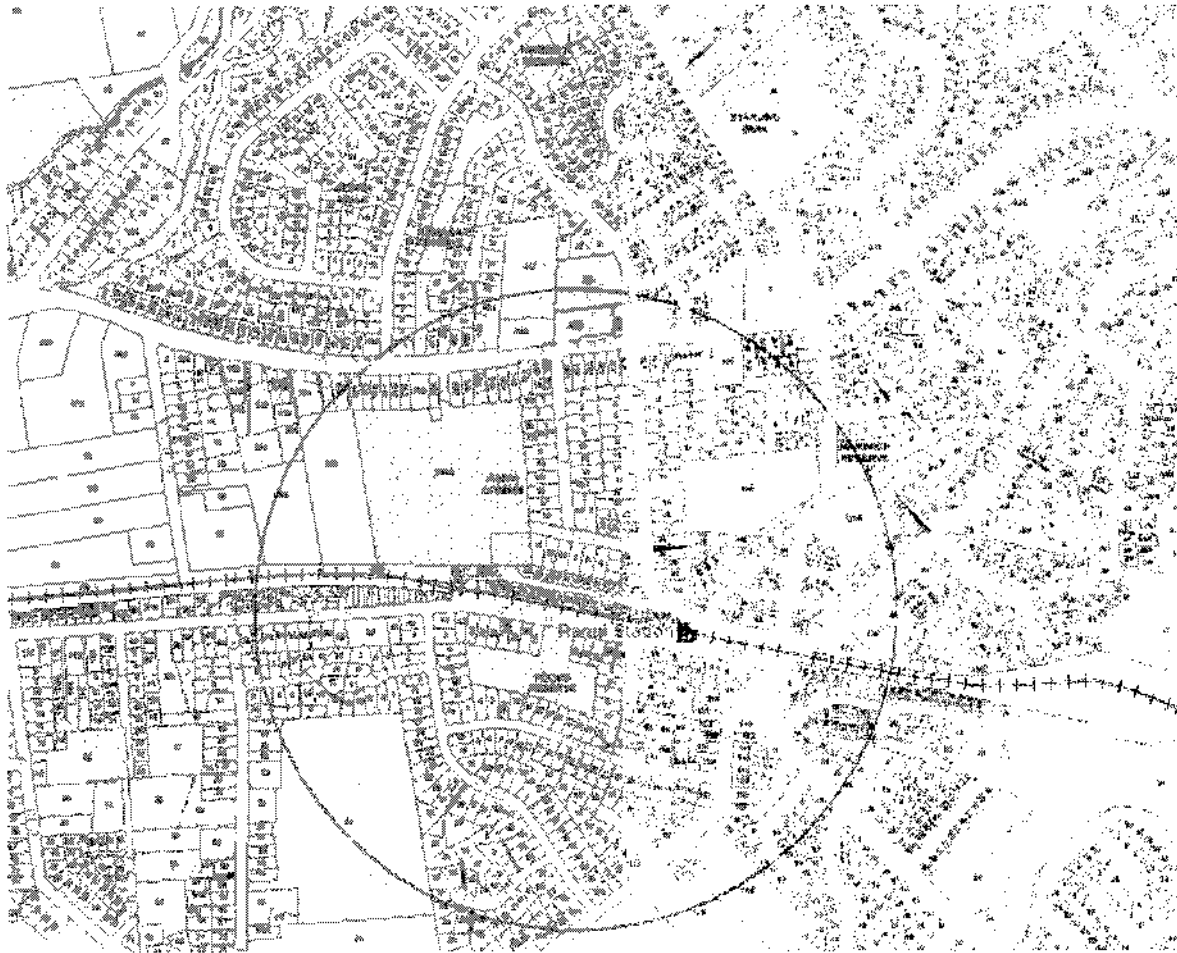
The timing and form of partner consultation (central government, local government, Mana whenua) will be finalised and presented to the RSDF on the 30th May, along with the draft One Plan.

Greater detail on the timing of key stakeholder consultation will be developed up to and following the endorsement of the draft One Plan version 1.

Option to convene an RSDF meeting on 1st August

An additional meeting of the RSDF could provide an opportunity for the RSDF to consider any feedback arising from the consultation. This is because the current meetings scheduled do not allow time to collect and properly consider submissions, as the current meetings are planned for 13th June and 11th July. The extra meeting would be scheduled for the 1st August.

**APPENDIX AXX
RANUI LOCATION PLAN**



A121

APPENDIX BXX

ENQUIRY BY DESIGN EXPLANATION

The Enquiry by Design process is a planning tool which involves stakeholders and the local community in shaping a vision for a place. Is an intensive design enquiry where every issue is tested by being drawn. The fundamental difference between an Enquiry by Design and the conventional design/ planning process is that Enquiry by Designs are simultaneously interactive rather than sequentially reactive, as is usually the norm. Enquiry by Design is a crucial element in achieving sustainable communities, delivering master plans based on enduring design principles, and developing the place-making skills of all participants in the workshop process.

The Enquiry by Design process will bring together key stakeholders to collaborate in articulating a vision for their site and the wider Ranui area through an intensive workshop, facilitated by a multi-disciplinary design team. This process will actively engage them in the planning and design of their community, helping to build up the confidence and collective enthusiasm to allow the vision to be taken forward after the workshop has been completed.

The number of participants in a workshop can range from twenty through to several hundred and this varies at different points throughout the workshop. Landowners on and around the site, local politicians, relevant council officers and local community representatives need to be involved as they are the key decision makers.

A122