



Improve the state of Waitakere's biodiversity.

Goal 2:

Provide for the maintenance and long term viability of the City's indigenous biodiversity.

Goal 3:

Enable the re-establishment of species lost from the City.

Goal 4:

Enable the effective involvement of tangata whenua in the management of biodiversity and to fulfil their responsibilities as kaitiaki.

Goal 5:

Coordinate, contribute to and build community capacity for the maintenance and enhancement of indigenous biodiversity.

Goal 6:

On-going research and monitoring.

A27

GOAL 1. ESTABLISH THE STATE OF WAITAKERE'S BIODIVERSITY

Action	Who to		
Collate and summarise existing information on Waitakere's biodiversity.	Strategy ARC Parks Planning Conservation groups	Desk top research. Monitoring results. Local knowledge and observations	By end of 2006
Prepare an inventory of local species that are threatened or at risk.	Strategy ARC DoC	Literature search Community input	By end of 2006
Make biodiversity information available to all Council staff and the community	Strategy Public Affairs Parks Planning EcoWater	Make information available on the Council website. Include biodiversity information on LIMs and PIMs. Prepare flyers or booklets. Keep the State of the City Report updated.	June 2007

A28

GOAL 2. PROVIDE FOR THE MAINTENANCE AND LONG-TERM VIABILITY OF THE CITY'S INDIGENOUS BIODIVERSITY.

Initiatives to meet objectives for protection of heritage values in the Waitakere Ranges Heritage Bill	WCC ARC		On commencement of the Waitakere Ranges Heritage "Act"
Identify all high priority sites for conservation from existing resources and from community input	Strategy Parks Planning Conservation groups	PNA Survey information New sightings	By July 2007
Ensure existing biodiversity is conserved and enhanced on proposed development sites.	Consent Services Strategy	Conditions on consents	On-going
Maintain and enhance, as appropriate, current levels of regulatory protection of natural heritage afforded by the District Plan	Strategy Consent Services	Conditions and consents	On-going
Continue to identify Ecological Linkages in the District Plan as areas desirable for restoration. No rules apply to these areas the identification acts as a flag to landowners who may wish to contribute to the Green Network by restoring or creating these	Strategy Policy Implementation	Plan Changes	District Plan review
Encourage landowners to take up the Green Network Community Assistance programme	Parks Planning	Secure additional funding	During each Annual Plan round
Provide advice on District Plan changes to ensure sites are adequately protected and objectives, policies and rules can adequately address biodiversity objectives and challenges.	Strategy	Co-ordinate with Policy Implementation on District Plan Changes	Co-ordinate with District plan reviews
When preparing or reviewing Reserve Management Plans ensure that biodiversity is recognised and provided for.	Parks Planning	Surveys Submissions on consultation	On-going
Acquire sites for conservation	Parks Planning	Be prepared with funding when land comes on to the market Development contributions	On-going

A29

Update and implement the WCC Weed Management Plan.	Parks Planning Parks & Green Assets	Regular review	2006/2007
Work with other parties to co-ordinate plant and animal control work	Parks Planning Parks & Green Assets	Co-ordinate with ARC, MAF, Conservation Groups	On-going
Prepare and implement a pest animal control plan for high conservation areas	Parks Planning	Incorporate in the review of the weed (pest) management strategy Co-ordinate with ARC	2006/2007
Prepare a biosecurity response plan	Strategy	Co-ordinate with ARC	2007/2008
Continue and strengthen partnerships with the community through the Green Network Community Assistance programme	Parks Planning	Working with land owners	On-going
Strengthen the awareness of biodiversity importance for consideration when processing applications for new developments	Strategy Consent Services	Information leaflets Pre-application meetings	On-going
Support and implement the North West Wild Link	P&A Leader	Co-ordinate with ARC, NSCC, RDC	Launch in February 2006, Community forum in April
Implement the protective measures for biodiversity in the Waitakere Ranges Heritage Bill	ARC Consent Services	Conditions on consents	On-going
Jointly with landowners prepare a biodiversity management plan for the Te Henga wetland	Parks Planning Strategy	Co-ordinate with ARC, DoC, Forest & Bird, Fish & Game and land-owners	
Promote within the community, and implement in Council planting projects, eco-sourcing of plant material	Parks Planning Consent Services	Inform nurseries Conditions on consents	On-going
Strengthen the provisions in the District Plan for retaining streams in a natural state, protecting and restoring riparian margins and ensuring fish passage.	Strategy		

A30

GOAL 3. ENABLE THE RE-ESTABLISHMENT OF SPECIES LOST FROM THE CITY.

Action	Who can	How	When
Identify and prioritise sites and corridors for restoration.	Parks Planning Strategy	Surveys	2007/08
Prepare and implement restoration plans for priority sites.	Parks Planning Parks and Open Spaces Strategy		
Prepare and implement species recovery plans for threatened species.	ARC DoC Parks Planning Strategy		
Promote the planting and conservation of threatened plants	Parks Planning Consent Services Strategy	Planting on parks Conditions on consents	On-going
Manage reserve networks to allow for and facilitate their response to long-term environmental changes and future risks (climate change, biosecurity incursions).	Parks Planning		On-going
Support the re-introduction of species lost to the Waitakere ranges.	Strategy	Co-ordinate with ARC, DoC.	On-going

A31

GOAL 4. ENABLE THE EFFECTIVE INVOLVEMENT OF TANGATA WHENUA IN THE MANAGEMENT OF BIODIVERSITY AND FULFIL THEIR RESPONSIBILITIES AS KAITIAKI.

Action	Who can		
Develop partnerships with Te Kawerau a Maki and Ngati Whatua as nga kaitiaki	Strategy Parks Planning Ecowater	Regular meetings and sharing information	On-going
Include Te Kawerau a Maki and Ngati Whatua values in biodiversity actions and management	Parks Planning Ecowater	Regular meetings and sharing information	On-going
Facilitate the sustainable gathering of cultural material from council managed sites.	Parks Planning Parks and Green Assets	Working with cultural groups and Corban Estate groups	On-going

GOAL 5. CO-ORDINATE, CONTRIBUTE TO AND BUILD COMMUNITY CAPACITY FOR THE MAINTENANCE AND ENHANCEMENT OF INDIGENOUS BIODIVERSITY.

Action	Who can		
Strengthen existing arrangements and create new ones to encourage people to participate in supporting biodiversity.	Parks Planning Ecowater	Assist membership and funding of conservation groups	Annual Plan 2007/08
Continue to provide information and encouragement for voluntary initiatives for biodiversity protection.	Parks Planning Ecowater	Produce relevant pamphlets	On-going
Continue to provide funding for the Green Network Community Assistance Programme of restoration and covenanting of privately owned land.	Parks planning	Budget provision	On-going
Develop a database of biodiversity conservation effort in Waitakere City for information sharing.	Parks Planning	Co-ordinate with ARC	By end of 2006
Continue to support education programmes at all levels in the community.	Public Affairs	Environmental education and advocacy	On-going
Emphasise the importance of backyard ecology	Parks Public Affairs	Educational material	2006

A32

GOAL 6. ON-GOING RESEARCH AND MONITORING.

Action	Who can	What	When
Establish a monitoring programme for Waitakere's biodiversity.		Involve ARC, DoC and the Universities	
The Waitakere Ranges Heritage Bill requires monitoring and reporting on the state of the environment within the Heritage Area.	WCC, ARC, landowners		On implementation of the Bill once it becomes an Act and then every 5 years.
Use monitoring information to improve management of sites.	Parks Planning Conservation groups Landowners	Management plans Planting plans Weed management	On-going
Develop relationships with research organisations to contribute to biodiversity knowledge	Strategy	Keep up to date with research literature, in particular, from U of A, AUT and Unitech, Botanical Society.	On-going
Explore opportunities for community involvement in monitoring and ways of publicising and using results.	Parks Planning Ecowater	Project Twin Streams WaiCare	On-going

A33

Page Photo references

1	Stream bank Henderson Creek.
2 & 3	Expansive view Henderson Creek.
3	Pukeko, Orangihina/Harbourview.
4	Banded Kokopu (<i>Galaxias fasciatus</i>). Longfin Eels (<i>Anguilla dieffenbachii</i>). Manawa Wetland
5	Waitakere Ranges. Waitakere Stream. Planting in the Waitakere Ranges.
6	Waitakere City. Kapa Haka, Tui Glen. Moire Park. Waitakere Ranges. Glen Eden Library. Paremuka Park.
7	Waitakere Ranges. Paremuka Park.
8	Orangihina/Harbourview. Mangroves Manutewhau.
9	Bracken (<i>Pteridium esculentum</i>). Monarch Butterfly. Tui. Te Henga-Wainamu. Wood rose (<i>Dactyloctenium aegyptium</i>). Long tailed bat (<i>Chalinolobus tuberculatus</i>).
10	Map: Areas of significant vegetation, Waitakere City.
11	Seed gathering Waitakere Ranges. Titirangi, Waitakere Ranges. (<i>Solanum aviculare</i>).
12	Waipareira Walkway. Coastal Flax (<i>Phormium cookianum</i>). Waitakere Ranges
13	Orangihina/Harbourview. Little Blue Penguins. Fern Bird. Inanga (<i>Galaxias masculatus</i>). Kereru/Wood Pigeon.
14 & 15	Moire Park.
15	Tui, female and male.
16	Waitakere Rock Hebe (<i>Hebe bishopiana</i>). Kaka (<i>Nestor meridionalis septentrionalis</i>). Green gecko (<i>Nautilinus elegans</i>). Hochstetter's Frog (<i>Leiopelma hochstetteri</i>).
17	Kauni Snail (<i>Paryphanta busbyi</i>). Frog tunnel, beneath Scenic Drive, Waitakere Ranges. Pukeko and Duck Corbans Park. Koura, fresh water crayfish (<i>Parenephrops</i>). Fresh water limpet (<i>Latia</i>). Crans bully (<i>Gobiomorphus basalis</i>). Fresh water crab (<i>Halicarcinus lacustris</i>).
18	Paremuka Park. Manawa Park. Henderson Creek. Common Bully (<i>Gobiomorphus cotidianus</i>).
19	Orangihina/Harbourview. Manawa Park. Jetty at Paramuka Park.
20	Bridge at Moire Park.
20 & 21	Ferns (<i>Blechnum species</i>), Waitakere Ranges.
22 & 23	Tree ferns, Waitakere Ranges.
24	Te Henga.
25	Piha.
26	Orangihina/Harbourview.

A34



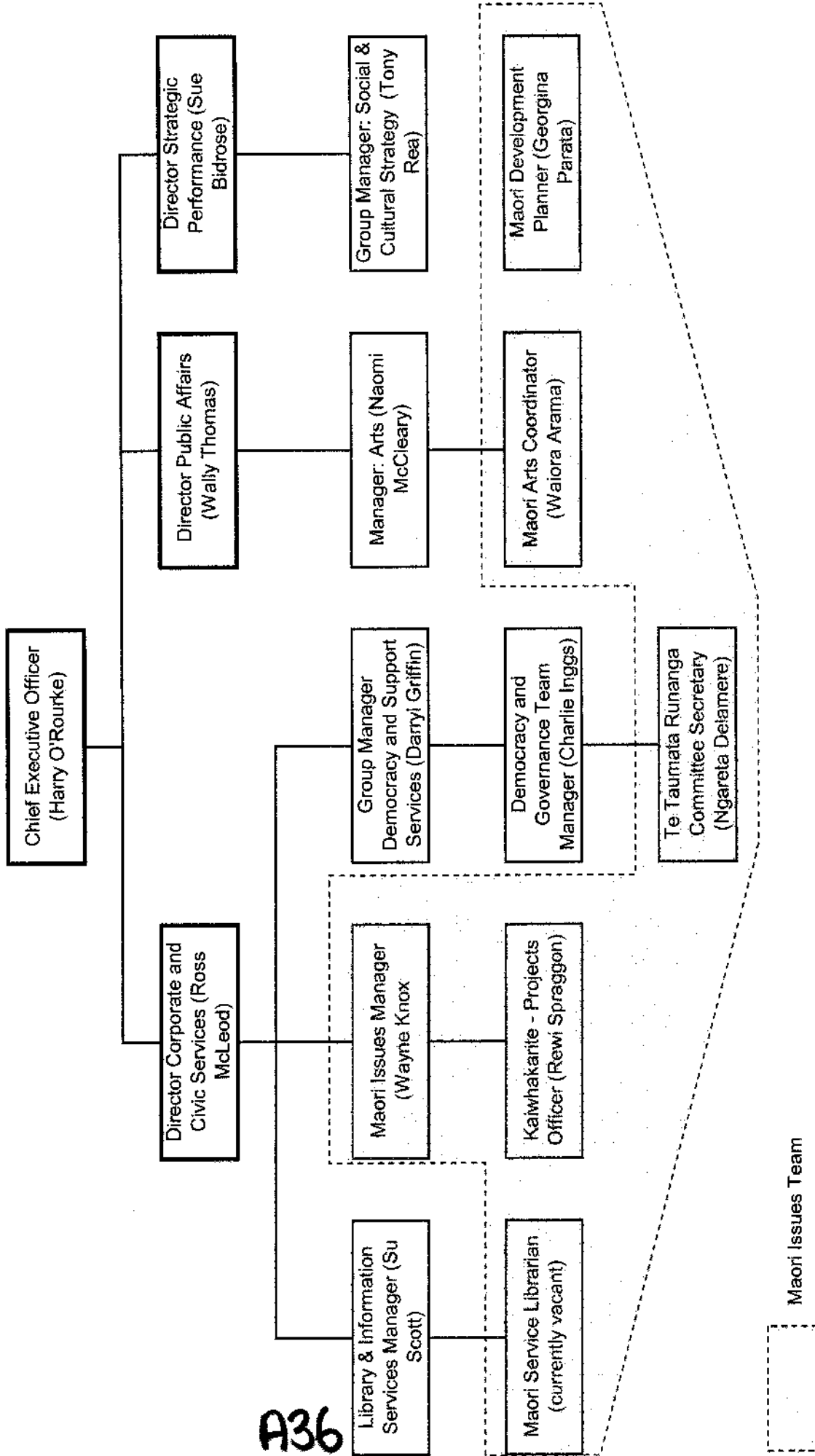
A35

Wairakere City Council
Biodiversity Strategy and Action Plan
June 2005

Wairakere City Council
Te Tūāro o Wairakere

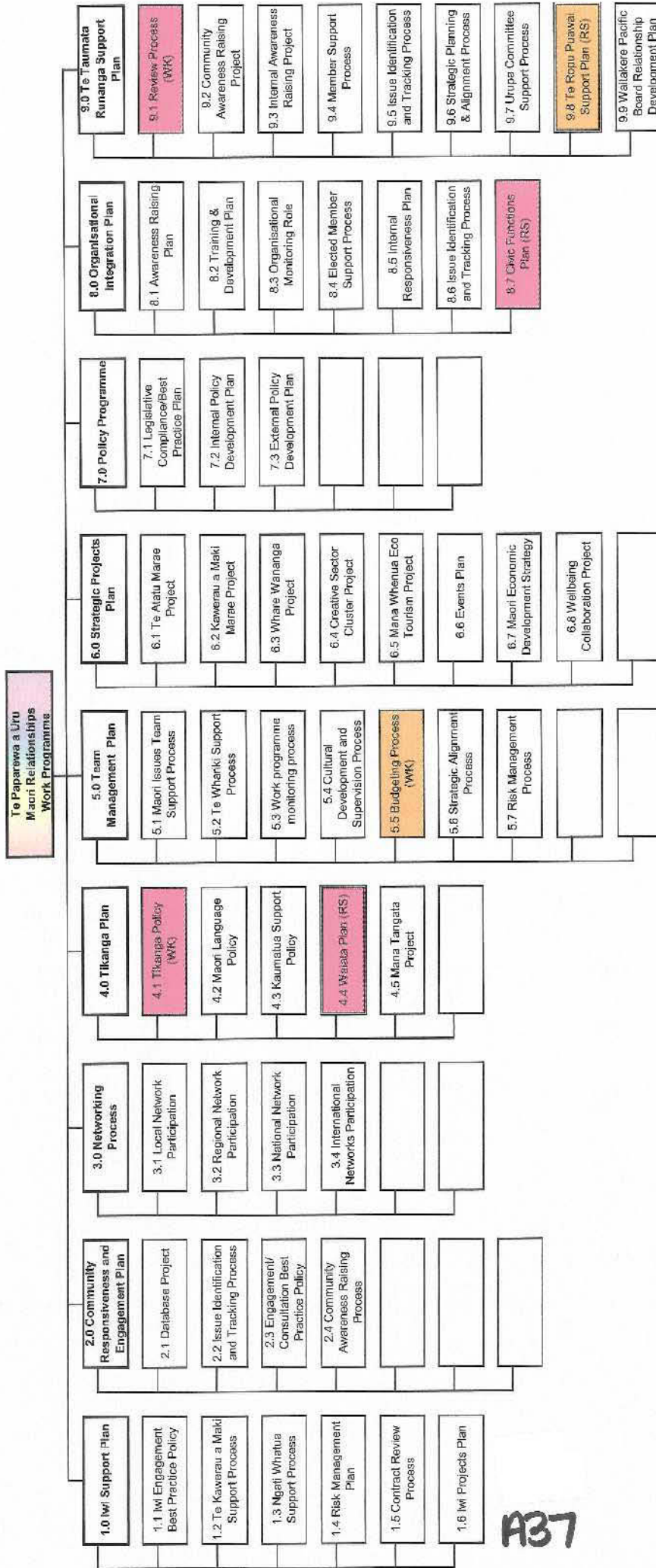
PRINTED ON RECYCLED PAPER WITH NO FLUORESCENT INK

Maori Relationships Team Organisational Structure



A36

Maori Relationships Team Draft Work Programme – as at 11/9/06



A37

KEY

- High Priority - start immediately
- Medium Priority - start within next month
- Low-Medium Priority - start as resources are available
- Completed
- Additional Plan Required (see Sheets)