

## 5.9 Waitakere District Plan

### ***Human Environments (Figure 12)***

The District Plan's Human Environment zones reflect the nature of the existing development and the importance and sensitivity of the natural values present. The varying zones recognise the different landscapes and local areas in the City, as a basis for the management of effects, particularly on landscape and amenity values, health and safety. Outside the urban area, the zones are defined primarily by the natural landscapes and the mix of buildings within them. The zones reflect the variations in land uses, density of buildings, and the character derived from the dominant activities that take place in different areas. The characteristics of the relevant zones are discussed briefly below;

#### Waitakere Ranges

Includes the bush-covered areas of the Waitakere Ranges, and the West Coast and Manukau Harbour, where natural elements and wilderness character dominate.

#### Bush Living

Includes those intensively settled areas within the Waitakere Ranges, where natural features dominate. A "non-urban" character predominates.

#### Foothills

Includes the mixed landscape of the eastern foothills catchments of Oratia, Opanuku, Swanson and upper Kumeu streams, excluding the relatively continuous bush cover of the upper catchments and ridges.

#### Open Space

Includes areas of publicly owned open space ranging from the Regional Park in the Waitakere Ranges to the small local parks.

### ***Natural Environments (Figure 13)***

The District Plan's Natural Environment zones are concerned with the management of effects of activities on natural and physical resources (other than structures). The Natural Environments are defined around certain key resources, around their relative significance or importance, and the level of protection required to ensure their continued health and survival. The characteristics of the relevant Natural Environments within Waitatarua are discussed briefly below;

#### Riparian Margins/Coastal Edges

Includes the margins of streams, lakes, wetlands and the City's coastline. Riparian Margins (streams, lakes and wetlands) are particularly sensitive to the adverse effects of use and development.

#### Protected

Includes the areas which have been identified as containing outstanding native vegetation and/or outstanding natural features. These areas have been defined on the basis of providing a high level of protection to resources that lie within them.

#### Managed

Includes all areas of significant and outstanding native fauna habitat, and those areas of vegetation that have been identified as significant using the criteria of the District Plan. The management approach recognises the need to provide a level of protection that is

compatible with the capacity of the area to absorb impacts. However it also recognises that limited settlement may occur.

#### Restoration Natural Area

Includes those areas of native vegetation with between 20% and 50% native vegetation cover that are over 300m<sup>2</sup> in area. The management approach is focussed on the need to provide protection for the natural regeneration process.

#### General

Includes all those areas of the City not identified as Riparian Margins/Coastal Edges, Protected, Managed, Coastal or Restoration Natural Areas. There is considerable geographic diversity, including the foothills, the urban area and those small areas on the West Coast and the Manukau Harbour that are occupied by villages, or where no native vegetation is found.

The District Plan zoning, in particular that of the Human Environment, formed a significant consideration in locating the boundary. The Human Environment zones are designed to reflect the nature of the existing development and through rules provide for the future character of that area. As the LAP will inform the future character of the area it is important that the relevant zoning of that area is taken into consideration.

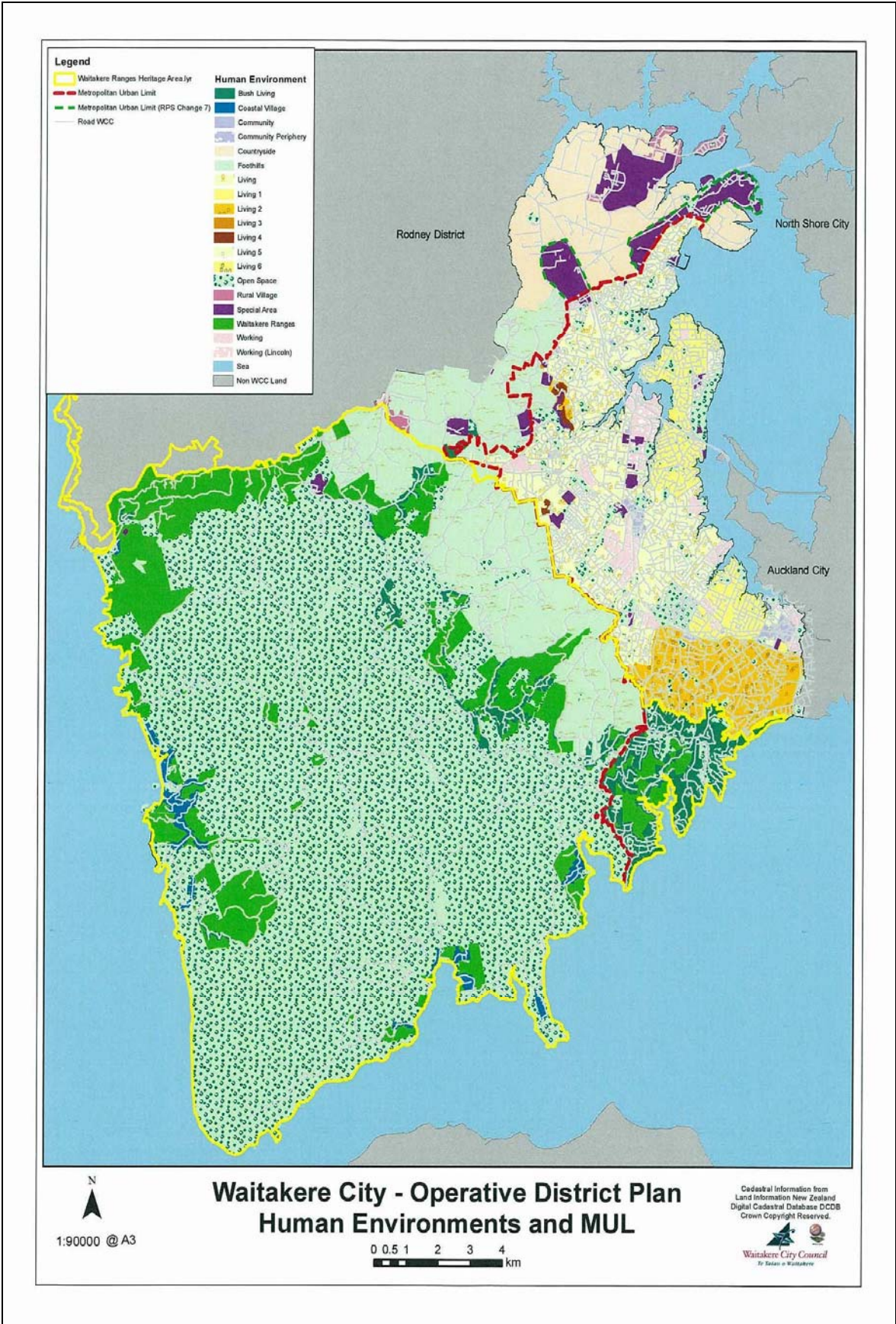


Figure 12: District Plan Human Environments

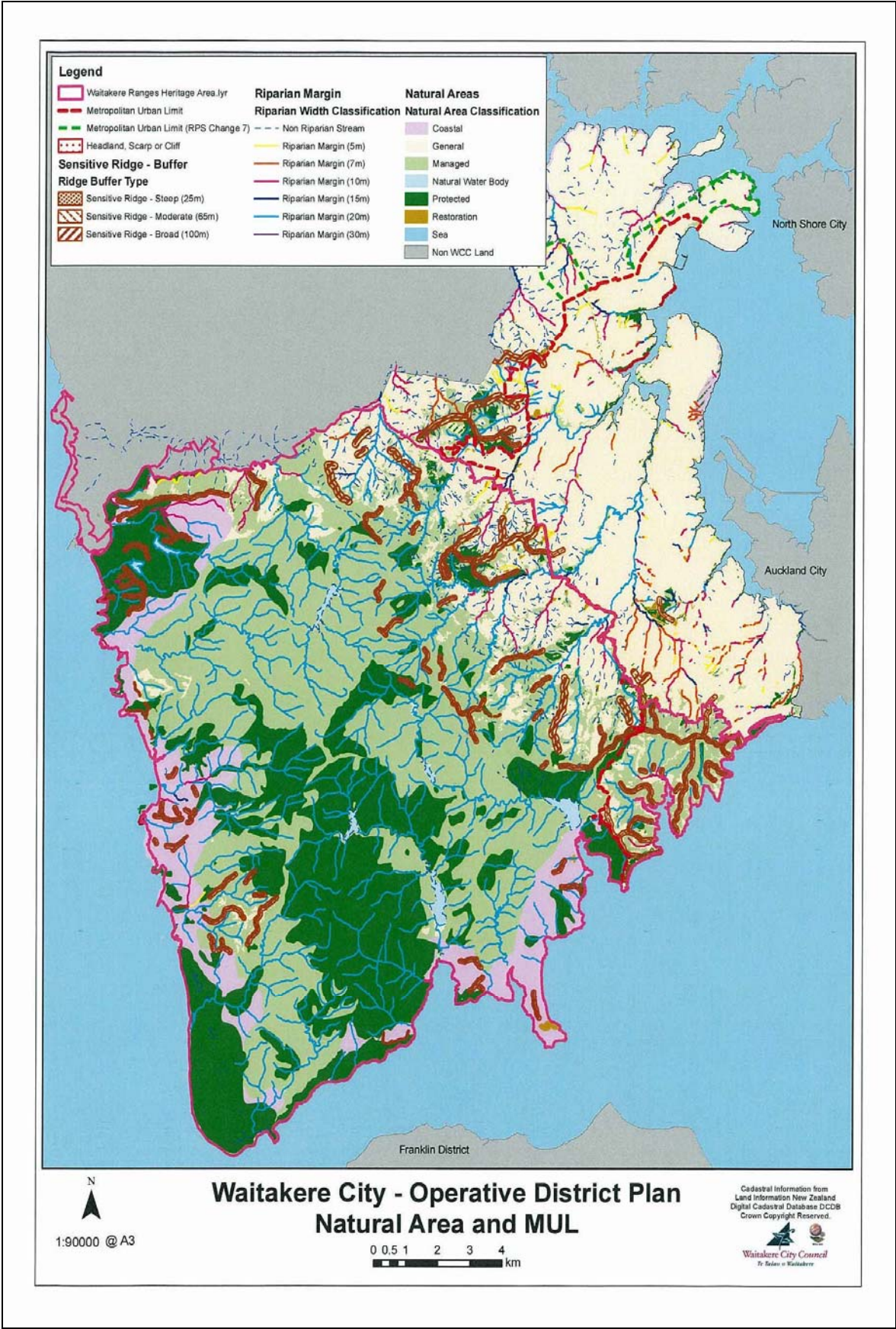


Figure 13: District Plan Natural Environments

## **5.10 Roads (Figure 14)**

Roads form the connections between places and provide access to and from a local area. The locations of these roads define the travel patterns of both residents and visitors. Oratia defined by Scenic Drive in the south, Forest Hill and Parrs Cross Roads in the north, and the four main connector roads West Road, Carter, Parker and Shaw Roads. These roads provide access to, from and within Oratia. These roads aid in defining the 'distinctive community' that is Oratia, by providing access to the community and linking residents with local amenities and others residents in their community.

Roads not only provide access, but they can also act as physical boundaries separating one community from another when there is no direct road connection.



Figure 14: Roads