

PAYMENTS FOR APPROVAL 13 APRIL 2008 TO 10 MAY 2008

The following payments are reported for the period 13 April 2008 to 10 May 2008

a)	Wages and Salaries (net of tax)		3,854,437
b)	Auckland Regional Council		5,710
c)	Watercare Services Ltd		704,653
d)	Inland Revenue Department		2,330,169
e)	Loan Maturities and Interest		54,983,390
f)	Contract payments over \$50,000:		
	ACS Services Ltd	Security Contracts	64,871
	Advances Pipeline Services Limited	Various Physical Works Contracts	145,961
	Air New Zealand	Travel	90,467
	Alliance Construction Ltd	Youth Facility Contract	625,564
	Blacktop Construction Ltd	Various Physical Works Contracts	525,316
	Canam Construction Ltd	Various Construction Contracts	172,063
	Civic Contractors Ltd	City Cleaning & Road Sweeping Contract	145,587
	Connell Wagner Ltd	Various Infrastructure Professional Services Contracts	64,750
	Creative Spaces NZ Ltd	Te Aataua Peninsula Community Facility Contracts	67,554
	D & F Contracting Ltd	Various Physical Works Contracts	142,522
	Datacom Systems Ltd	Information Management Support	56,245
	Directions Ltd	Signage Maintenance Contract	69,200
	Downer EDI Works Ltd	Various Physical Works Contracts	63,555
	Drake Personnel NZ Ltd	Temporary Staff	107,240
	Eagle Technology Group Ltd	Information Management Support	75,067
	Ecomatters Environment Trust	Various Ecowater Contracts	62,920
	Edgecity Builders	Various Building Projects	396,644
	Electionnz.com Ltd	Mail Handling - Elections	60,841
	Electrix Ltd	Various Infrastructure Lighting Contracts	72,132
	Field Drainage Specialists Ltd	Various Physical Works Contracts	209,179
	Fletcher Construction Ltd	Various Physical Works Contracts	148,657
	Fuji Xerox New Zealand Ltd	Printer/Copying Contract	94,900
	Fulton Hogan North Harbour Ltd	Various Physical Works Contracts	1,444,178
	Genesis Energy	Power Contracts	253,539
	H & H Contractors	Various Physical Works Contracts	120,567
	HEB Contractors	Various Physical Works Contracts	675,831
	Icon Security Group Ltd	Security Contract	79,604
	Infrastructure NZ Ltd	Various Physical Works Contracts	236,214
	ISS Facility Services Ltd	Property Cleaning Contracts	54,919
	isthmus Group Ltd	Various Professional Services Contracts	61,925
	Meerkat Alert Systems	Public Alert Siren System	151,927
	Metro Construction Ltd	Various Physical Works Contracts	145,839
	MWH New Zealand Ltd	Various Professional Services Contracts	93,870
	NZ Police	Transport Act Infringements	60,236
	Network Construction Ltd	Various Physical Works Contracts	125,251
	Nasey Contractors Ltd	Various Physical Works Contracts	113,707
	ONYX Group Ltd	Waste Collection Contract	371,054
	Parks & Maintenance Services Ltd	Parks Maintenance/Renewals Contracts	376,659
	Perry Motors Ltd	Motor Vehicle Contract	127,448
	Robert Walters New Zealand Ltd	Contract Staff	67,217
	Smith & Davies Ltd	Waste Removal Contract	105,473
	Smith & Davies Civil Ltd	Various Physical Works contracts	81,333
	Softsource Ltd	Information Management Support/Equipment	75,916
	Synergine Consulting Ltd	Various Professional Services Contracts	74,521
	Techscape Ltd	Various Parks Maintenance Contracts	2,025,106
	Telecom New Zealand Ltd	Calls & Charges	213,306
	Thomas Civil Consultants Ltd	Various Professional Services Contracts	115,986
	Traffic Systems Ltd	Various Physical Works Contracts	167,163
	Transfield Services	Various Physical Works Contracts	164,895
	Treescape Ltd	City Arboriculture Maintenance Contract	220,532
	Underground Connections Ltd	Various Physical Works Contracts	117,041
	Waitakere Arts & Cultural Trust	Annual Operating Grant	91,406
	Waitakere Organic Centre Ltd	Composting Operations Contract	84,857
	Waste Management NZ Ltd	Waste Removal Contract	386,073
	Total contract payments over \$50,000		11,944,827
g)	Other payments over \$50,000:		
	Auckland City Council	Various Shared Projects	62,707
	Local Government New Zealand	Annual Subscription	101,619
	Ministry of Justice	Share of Infringement Notices	53,970
	Ranui Action Project	Programme Funding	76,200
	Sport Waitakere	Programme Funding	112,500
	Total other payments over \$50,000		406,996
h)	Other payments under \$50,000		4,511,089
	TOTAL PAYMENTS		78,741,272

AM

Details of payments made between 13 April 2008 and 10 May 2008

<u>Supplier</u>	<u>Amount</u>	<u>Description</u>
3months.com Ltd	10,584.00	Information Management - Website development
80-20 Options NZ Ltd	16,516.41	Professional services - Transport Assets
80-20 Options NZ Ltd	17,389.69	Professional services - Transport Assets
A & R White	10,146.66	Property rental
ACS Services	15,459.19	Various security contracts
ACS Services	15,462.01	Various security contracts
ACS Services	33,949.97	Various security contracts
Action Traffic Control Ltd	5,189.06	Various traffic control contracts
Adcorp Marketing Communications	21,703.20	Various media communications contracts
Ads Environmental Services NZ Ltd	6,059.81	Waste Water flow guaging contracts
Advanced Pipeline Services Ltd	145,960.99	Infrastructure physical works contracts
Agile (NZ) Ltd	37,839.00	Information Management support contracts
Agility Group Ltd	14,400.00	Contract staff - Information Management
Air New Zealand Ltd	90,467.18	Travel
Airpro Service Ltd	9,758.03	Various airconditioning maintenance contracts
Algami Ltd	6,000.00	West Wave - Membership promotion
All Shine Cleaners	11,040.87	Various property cleaning contracts
Alliance Construction Ltd	625,564.17	Henderson Youth Facility contract
Allwest Plumbing Ltd	5,447.38	Various plumbing contracts
Allwest Plumbing Ltd	32,741.87	Various plumbing contracts
Aluka Services	5,625.00	Professional Services - Community Facilities
Andrew Stewart Ltd	27,514.42	Professional services - Infrastructure contracts
Angela Doel	11,053.13	Professional services - Infrastructure contracts
Appsense	39,010.77	Information Management support contracts
Aqualab (NZ) Ltd	13,586.63	Water quality testing contracts
Archifact Ltd	5,682.83	Professional services - New Lynn Hotel contract
Architectus Ltd	38,721.09	Professional services - New Lynn TOD contracts
Arrow International	38,325.00	Bond refund
Arthur D Riley & Co Ltd	5,146.76	Water meter supply contract
Ascari Partners Ltd	5,375.00	Professional services - Royal Commission contracts
Aspin Weed Control Ltd	19,016.65	Roadside vegetation control
Asset Construction Ltd	11,496.94	Infrastructure physical works contracts
Asset Construction Ltd	20,174.06	Infrastructure physical works contracts
Asten Developments Ltd	22,725.00	Refund - Subdivision consent fees
Auckland City Council	6,114.22	Various joint projects
Auckland City Council	56,593.20	Various joint projects
Auckland Regional Council	5,710.00	Various resource consents
Auckland University of Technology	5,670.00	Professional services - Regional governance contracts
Audit New Zealand	33,750.00	Audit contract
Autolab Enterprises Ltd	5,138.20	Fleet servicing contracts
Avenues Event Management	5,068.75	Stormwater conference expenditure
Barnabas Professional Services Ltd	17,462.61	Professional services - Infrastructure contracts
Barnabas Professional Services Ltd	19,413.01	Professional services - Infrastructure contracts
Beca Infrastructure Ltd	48,451.50	Professional services - Infrastructure contracts
Bike Barn New Lynn	14,128.99	Equipment purchase
Billfinger Berger Services (NZ) Ltd	8,144.77	Infrastructure physical works contracts
Blacktop Construction Ltd	525,316.13	Infrastructure physical works contracts
Blake Family Trust	14,906.25	Aquatic Centre management contract
Bliss Fitness NZ Ltd	18,157.50	West Wave equipment purchase
Blueprint 7 Ltd	11,750.22	Quality assurance contracts
Boffa Miskell Ltd	11,624.63	Professional services - Infrastructure contracts
Bp Oil NZ Ltd	44,981.46	Fleet fuel
Brave Design Ltd	8,551.13	Various signwriting contracts
Building Research Association NZ	19,058.23	Levies - March 2008
Business Appraisals Ltd	7,313.64	Professional services - Commercial valuations
C & C Strategic Ltd	7,787.81	Professional services - Human Resources
Canam Construction Ltd	9,757.69	Various construction contracts
Canam Construction Ltd	79,451.83	Various construction contracts
Canam Construction Ltd	82,853.10	Various construction contracts
Cato Bolam Consultants Ltd	20,679.76	Professional services - infrastructure contracts

<u>Supplier</u>	<u>Amount</u>	<u>Description</u>
Cato Bolam Consultants Ltd	24,196.50	Professional services - infrastructure contracts
CB Richard Ellis - Auckland	5,625.00	Professional services - infrastructure contracts
City Certifying Consultants Ltd	24,316.97	Professional services - Building consultancy
Civic Contractors	50,672.89	Litter collection contracts
Civic Contractors	94,914.23	Litter collection contracts
Coastline Excavators	8,460.28	Infrastructure physical works contracts
Commercial Information Systems NZ Ltd	15,917.34	Contract staff - Information Management
Common Ground Urban Design & Arch Lt	6,706.13	Professional services - New Lynn TOD contracts
Community Asset Management Ltd	28,655.60	Bus shelter and guardrail maintenance
Connell Wagner Ltd	64,749.66	Professional services - Transport Assets
Conspec Construction Ltd	5,696.07	Infrastructure physical works contracts
Consultech	28,395.68	Professional services - Infrastructure contracts
Corban Estate Art Centre	8,971.99	Project funding
Covekinloch Consulting Ltd	5,350.73	Professional services - Parks contracts
Creative Spaces Ltd	20,777.10	Professional Services - Community Facilities
Creative Spaces Ltd	46,776.72	Professional Services - Community Facilities
CTMA New Zealand Ltd	11,321.96	Professional services - Customer satisfaction tracking
D & F Contracting Ltd	142,522.11	infrastructure physical works contracts
Datacom Systems Ltd	56,244.94	Information Management support contracts
Datacraft (NZ) Ltd	9,348.23	Information Management support contracts
Dazzle Events	9,821.87	Event management contracts
Deloitte	10,896.21	SAP support contracts
Department of Building & Housing	37,544.71	Levies - March 2008
Destin Consulting Ltd	44,368.59	Information Management support contracts
Detection Services	5,762.73	Ecowater underground detection contracts
Directions Ltd	69,200.04	Street signage contracts
Downer EDI Works Ltd	63,554.63	Infrastructure physical works contracts
Drake Personnel NZ Ltd	16,182.17	Temporary staff
Drake Personnel NZ Ltd	26,647.81	Temporary staff
Drake Personnel NZ Ltd	26,718.74	Temporary staff
Drake Personnel NZ Ltd	37,690.83	Temporary staff
Duncan Hunter Stewart Milne	5,000.00	Bond refund
Eagle Technology Group Ltd	8,386.88	Information Management support contracts
Eagle Technology Group Ltd	66,679.83	Information Management support contracts
Easy Products Ltd	6,859.39	Parks facilities hygiene contracts
Eclipse Group Ltd	5,737.50	Professional services - resource consents
Eco Designs	12,706.88	Carry bags for Libraries
Ecomatters Environmental Trust	12,423.38	Ecowater conservation contracts
Ecomatters Environmental Trust	15,783.75	Ecowater conservation contracts
Ecomatters Environmental Trust	34,712.70	Ecowater conservation contracts
Econo Built Design Build Ltd	5,000.00	Crossing bond refund
Edgecity Builders	84,847.78	Various building contracts
Edgecity Builders	146,606.75	Various building contracts
Edgecity Builders	165,189.71	Various building contracts
Electionnz.com Ltd	60,840.81	By-election contracts
Electrix Ltd	72,132.41	Street lighting contracts
Environmental Defence Society	5,625.00	Contribution to conference
Envirostate	5,625.00	Professional services - Enviro-challenge programme
Envirotech Maintenance Ltd	10,713.38	Property maintenance projects
Eurest NZ Ltd	7,488.13	Central catering contract
Eurest NZ Ltd	15,273.07	Central catering contract
Excell Corporation Ltd	9,684.39	Infrastructure physical works contracts
Fairfax Auckland Group	13,322.42	Media advertising/notices
FHL Ltd	8,371.83	Development contribution refund
Field Drainage Specialists Ltd	209,178.88	Infrastructure physical works contracts
Filecorp Ltd	23,618.66	Purchase of consent files
Fletcher Construction Co Ltd	148,657.38	infrastructure physical works contracts
Fuji Xerox New Zealand Ltd	94,900.44	Photo coping supplies contracts
Fulton Hogan Ltd - North Harbour	31,334.92	Infrastructure physical works contracts
Fulton Hogan Ltd - North Harbour	1,412,843.10	Infrastructure physical works contracts
Fumacaro	5,620.55	Various sanitary contracts
Gallax Holding	17,343.75	Property rentals
Genesis Energy	5,210.52	Power supply contracts

All

<u>Supplier</u>	<u>Amount</u>	<u>Description</u>
Genesis Energy	6,964.75	Power supply contracts
Genesis Energy	98,229.25	Power supply contracts
Genesis Energy	143,134.39	Power supply contracts
GHD Ltd	16,692.75	Professional services - Resource consent contracts
Gillespie Consultants Ltd	40,772.14	Professional services - Infrastructure contracts
Glen Eden Community House	16,827.75	Annual operating grant
H & H Contractors Ltd	42,259.23	Infrastructure physical works contracts
H & H Contractors Ltd	78,308.17	Infrastructure physical works contracts
Haines NZ Ltd	13,825.14	Media advertising contracts
Haines NZ Ltd	26,051.95	Media advertising contracts
Harrison Grierson Consultants Ltd	8,480.76	Professional services - Resource consent contracts
Harrison Grierson Consultants Ltd	16,594.38	Professional services - Infrastructure contracts
Maslam Services Ltd	10,462.50	Professional services - Project Twin Streams
HEB Contractors	71,997.08	Infrastructure physical works contracts
HEB Contractors	186,486.26	Infrastructure physical works contracts
HEB Contractors	417,347.22	Infrastructure physical works contracts
Height Access Technology Ltd	6,828.75	Mounting of Council crests
Heio Design Ltd	5,162.19	Various printing contracts
Horizontal Earth Drilling Ltd	5,828.88	Infrastructure physical works contracts
Hydro Analytics Ltd	14,220.00	Contract staff - Information Management
Icon Security Group Ltd	30,404.72	Security contracts
Icon Security Group Ltd	49,198.78	Security contracts
indicate New Zealand Ltd	7,115.63	Professional services - Work place travel plan
Industrial Services Trading Trust	14,939.44	Infrastructure contracts - Cesspit cleaning
Infor Global Solutions (NZ) Ltd	6,980.63	Information Management support contracts
Infrastructure NZ Ltd	31,679.10	Infrastructure physical works contracts
Infrastructure NZ Ltd	49,178.99	Infrastructure physical works contracts
Infrastructure NZ Ltd	155,355.57	Infrastructure physical works contracts
Inland Revenue Department	719,424.77	PAYE tax
Inland Revenue Department	1,610,744.49	GST
Iss Facility Services	54,919.10	Property cleaning contracts
Isthmus Group Ltd	61,925.20	Professional services - Infrastructure contracts
J B Pipeline Services Ltd	12,376.09	Infrastructure physical works contracts
J B Pipeline Services Ltd	24,902.55	Infrastructure physical works contracts
Jade Software Corporation (NZ) Ltd	11,441.34	Payroll bureau contract
Janet Hannan	5,343.75	Professional services - Communications contracts
Jenny Macdonald Consulting Ltd	5,594.06	Professional services - Strategy & Development
John Andrew Ford	27,504.39	Motor vehicle contract
John Coster	7,288.34	Professional services - Corban Estate museum
Jones Environmental Ltd	6,077.25	Professional services - EcoWater contracts
Kathleen Mary Horler	23,970.00	Refund - Works bond
Kea Consultants Ltd	15,412.50	Professional services - Infrastructure contracts
Kennedy Furniture Ltd	19,958.66	Various furniture supplies
Kensington Swan (Auckland)	22,572.45	Professional services - Legal
KP Sweeping	5,743.13	Sweep and scrub stadium track and facilities
Landcare Research NZ Ltd	11,250.00	Professional services - Infrastructure contracts
Les Mills Holdings Ltd	7,425.00	West Wave programme license fee
Lineset Design & Print Ltd	47,836.18	Various printing contracts
Link IT Group	5,985.00	Information Management support contracts
Link IT Group	5,999.06	Information Management support contracts
Link IT Group	6,786.56	Information Management support contracts
Local Government New Zealand	101,619.00	Annual subscription
Logan Signs	6,576.30	Signage for vehicles
M K Floor Sanders Ltd	12,097.69	Property maintenance - Community facilities
Madison Recruitment Management	6,138.28	Contract staff
Madison Recruitment Management	17,194.75	Contract staff
Maggie Lawton	6,525.00	Professional services - EcoWater contracts
Majeed Kashi	5,624.83	Refund - funds incorrectly paid to Council's account
Mansell Contractors	10,482.28	Infrastructure physical works contracts
Mark Abbott Consulting Ltd	22,359.38	Professional services - BCAA contracts
Marsa Consultancy Ltd	19,153.95	EcoWater - Telemetry systems upgrades
Marshall Day Acoustics Ltd	5,079.37	Professional services - Sound level monitoring/advice
Massey Pony Club Incorporated	20,000.00	Contribution to bridge abutment works

A12

<u>Supplier</u>	<u>Amount</u>	<u>Description</u>
Massey University	11,250.00	Professional services - Sustainable living programme
Match NZ Ltd	23,625.00	Contract staff - Information Management
Matthew Casey Barrister	8,287.90	Professional Services - Legal advice
Maunsell Ltd	5,987.25	Professional services - Infrastructure contracts
Maunsell Ltd	16,215.75	Professional services - Infrastructure contracts
McClaren Park & Henderson Sth Com.Inc.	15,463.13	Programme funding - Twin Streams Project
Medial Associates	5,778.05	Professional services - Waitakere History project
Meerkat Alert Systems Ltd	151,926.59	Public alert siren system
Megan Courtney	11,205.00	Professional services - Strategy & Development
Megan Eichelsheim Consulting	6,210.00	Contract staff - information Management
Megan Eichelsheim Consulting	6,300.00	Contract staff - information Management
Metro Construction Ltd	7,689.60	Various building contracts
Metro Construction Ltd	29,711.25	Various building contracts
Metro Construction Ltd	108,438.19	Various building contracts
Michael John Simpson	8,808.75	Professional services - City Services contracts
Michelle Loo Consulting	5,366.25	Contract staff - Information Management
Mini-Fuels & Oils Ltd	7,055.09	Solid Waste plant fuel
Ministry of Justice	11,250.00	Share of infringement notices
Ministry of Justice	20,370.00	Share of infringement notices
Ministry of Justice	22,350.00	Share of infringement notices
Morphum Environmental Ltd	14,790.94	Professional services - Infrastructure contracts
Mortlock McElroy Ltd	5,000.00	Vehicle crossing bond refund
Murray & Buckley Contract	34,646.74	Infrastructure physical works contracts
Murray Donald Coop	11,340.00	Bond refund
MWH New Zealand Ltd	16,807.96	Professional services - Infrastructure contracts
MWH New Zealand Ltd	29,103.76	Professional services - Infrastructure contracts
MWH New Zealand Ltd	47,958.76	Professional services - Infrastructure contracts
NZ Post Ltd	14,674.35	Postage contracts
NZ Sponsorship Agency	5,862.38	Contribution to Northern Mystics
Nahid Ali	10,666.19	Contribution to stormwater system
Nasey Contractors Ltd	8,449.31	Infrastructure physical works contracts
Nasey Contractors Ltd	105,257.88	Infrastructure physical works contracts
National Provident Fund	7,684.02	Payroll deductions
National Provident Fund	7,981.35	Payroll deductions
National Provident Fund	8,923.19	Payroll deductions
Network Construction Ltd	125,250.81	Infrastructure physical works contracts
Network Visuals Ltd	7,515.01	Production of banners for Northern Mystics
New Zealand Grinding Company Ltd	25,429.95	Infrastructure physical works contracts
New Zealand Herald - Retail Account	7,043.87	Media advertising / notices
Norcross Stationery Ltd	10,788.89	Stationery supplies
North Shore Floor Sanding Company Ltd	5,001.75	Property maintenance - Community facilities
North West Flooring Ltd	6,797.25	Property maintenance - Community facilities
North Western Toyota	24,169.22	Motor vehicle contracts
NZ Police	60,236.25	Share of fines
Ongoing Enterprises Ltd	7,557.96	Refund of consent fees
Onstream Systems Ltd	39,928.50	Information Management support contracts
Onyx Group Ltd	371,053.65	Solid Waste collection contracts
Open System Specialists Ltd	6,187.50	Information Management support contracts
Opus International Consultants	6,907.50	Professional services - Infrastructure contracts
Opus International Consultants	23,749.87	Professional services - Infrastructure contracts
Parks & Maintenance Services Ltd	70,058.33	Parks maintenance contracts
Parks & Maintenance Services Ltd	115,930.41	Parks maintenance contracts
Parks & Maintenance Services Ltd	190,869.86	Parks maintenance contracts
Peers Brown Miller Ltd	5,442.19	Professional services - Arboriculture consultancy
Perry Motors Ltd	127,448.00	Motor vehicle contracts
Pete Bossley Architects Ltd	25,241.19	Professional services - Corban Estate projects
Peter Winefield Management Services	5,175.00	Professional services - Strategy & Development
Phillips & Smith Ltd	5,135.40	EcoWater - Standpipes and equipment purchases
Pinnacle Recruitment Ltd	9,627.19	Contract staff - information Management
Power Solution Ltd	7,485.01	Infrastructure physical works - street lighting
Power Solution Ltd	33,750.00	Infrastructure physical works - street lighting
Precision & General Engineering Ltd	9,281.25	Purchase of meter boxes
Professional Property & Cleaning Services	35,180.68	Property cleaning contracts

<u>Supplier</u>	<u>Amount</u>	<u>Description</u>
Progressive Polishers & Electro Platers	5,647.28	Metal work - Waikumete Cemetery contracts
Q Designz Ltd	10,450.62	Professional services - Rsource consent contracts
Qmex Ltd	11,038.97	Professional services - EcoWater contracts
Rachael Maree Trotman	16,020.00	Professional services - Twin Streams Project
Ranui Action Project Incorporated	25,400.00	Programme funding - Externally funded
Ranui Action Project Incorporated	50,800.00	Programme funding - Externally funded
Rawlinson & Co Ltd	5,062.50	Professional services - Henderson Youth Facility
Ripple Productions Ltd	21,093.75	Professional services - Event staging/management
Riteprice Project Management Limited	9,782.26	Professional services - Waikumete Cemetery contracts
Riteway Electrical Services	10,259.29	Various electrical maintenance contracts
Robert Walters NZ Ltd	8,955.00	Temporary staff
Robert Walters NZ Ltd	17,398.46	Temporary staff
Robert Walters NZ Ltd	19,154.25	Temporary staff
Robert Walters NZ Ltd	21,709.47	Temporary staff
RWA People Ltd	24,255.00	Contract staff - Information Management
Salesoft Cad Solutions Ltd	5,062.50	Information Management support contracts
Seka Holdings Ltd	8,374.14	Contract staff - Transport Assets
Sel Painters (Simmy Painters) Ltd	8,346.66	Property maintenance - Community facilities
Sheffield Ltd	7,537.51	Contract staff - Human Resources
Sheffield Ltd	8,322.19	Contract staff - Human Resources
Simpson Grierson (Auckland)	22,816.35	Professional Services - Legal advice
Sky Television	5,568.75	West Wave advertising
Smith & Davies Civil Ltd	5,176.91	Infrastructure physical works contracts
Smith & Davies Civil Ltd	76,156.10	Infrastructure physical works contracts
Smith & Davies Ltd	105,473.18	Solid Waste cartage contracts
Softsource Ltd	7,327.91	Information Management support contracts
Softsource Ltd	21,945.91	Information Management support contracts
Softsource Ltd	46,642.62	Information Management support contracts
Soil Engineering Ltd	6,243.75	Professional services - Infrastructure contracts
Southern Skies Environmental Ltd	14,126.06	Professional services - Infrastructure contracts
Southern Sky Books Ltd	5,461.19	Library books
Sport Waitakere	112,500.00	Programme funding
Sturges West Community House	14,404.50	Programme funding
Sunnah Thompson	9,000.00	Professional services - Twin Streams Project
Sustainable Business Network	13,500.00	Professional services - Project Twin Streams
Synergine Consulting Ltd	23,908.01	Professional services - Infrastructure contracts
Synergine Consulting Ltd	50,612.52	Professional services - Infrastructure contracts
Tait Communications Ltd	9,080.44	Equipment purchases - Emergency Management
Te Rongo Kirkwood	9,000.00	Professional services - Twin Streams Project
Te Ukaipo Mercy Initiatives Rangata	5,303.56	Programme funding - Twin Streams Project
Te Ukaipo Mercy Initiatives Rangata	15,936.76	Programme funding - Twin Streams Project
Techscape Ltd	2,025,105.51	Various Infrastructure maintenance contracts
Telecom NZ Ltd	91,319.77	Telephone contracts
Telecom NZ Ltd	121,985.94	Telephone contracts
Television New Zealand Ltd	22,583.32	West Wave advertising
The Answer Company International Ltd	18,458.44	Professional services - City development contracts
The Library Supply Company Ltd	11,537.33	Library books
The People Group Ltd	16,402.50	Professional services - Human Resources
The Property Group Ltd	20,124.86	Professional services - Property consultancy
Thebics Consulting Ltd	25,174.68	Professional services - Information Management
Thomas Civil Consultants Ltd	115,986.02	Professional services - Infrastructure contracts
Tile Studio	5,117.34	Supply materials for Twin Streams art works
Titan Marine Engineering Ltd	6,772.44	West Wave equipment maintenance
Titirangi Community House Committee	14,958.00	Programme funding
Tollemache Consultants Ltd	12,529.69	Professional services - Strategy & Development
Tony Murray Consultancy Services	7,680.94	Professional services - EcoWater contracts
Total Library Solutions	13,963.82	Library books
Tracey Selwyn Consulting Ltd	22,851.56	Contract staff - Information Management
Track Me Back New Zealand Ltd	6,750.00	Subscription to data base - Human Resources
Traffic Design Group Ltd	11,623.39	Professional services - Infrastructure contracts
Traffic Engineering & Management Ltd	5,342.40	Professional services - Infrastructure contracts
Traffic Engineering Solutions Ltd	24,665.63	Professional services - Infrastructure contracts
Traffic Systems Ltd	18,845.33	infrastructure physical works contracts

<u>Supplier</u>	<u>Amount</u>	<u>Description</u>
Traffic Systems Ltd	148,317.58	Infrastructure physical works contracts
Transfield Services	164,895.07	Infrastructure physical works contracts - Lighting
Transit New Zealand	34,284.54	Professional services - Infrastructure contracts
Treescape Ltd	96,619.22	Various Parks maintenance contracts
Treescape Ltd	123,913.24	Various Parks maintenance contracts
Tse Group Ltd	5,949.56	Professional services - Infrastructure contracts
Tse Group Ltd	13,443.75	Professional services - Infrastructure contracts
Ulverscroft Large Print Books Ltd	9,348.33	Library books
Underground Connections Ltd	23,996.25	Infrastructure physical works contracts
Underground Connections Ltd	25,612.20	Infrastructure physical works contracts
Underground Connections Ltd	67,432.50	Infrastructure physical works contracts
Unitec	7,500.30	Property rental
Unitec	38,357.96	Share of Corban Estate project
University of Auckland	9,421.88	Professional development contracts
Urbanism Plus	29,586.56	Professional services - City development projects
Urgent Couriers	5,033.52	Courier services contract
URS New Zealand Ltd	6,085.49	Professional services - Infrastructure contracts
URS New Zealand Ltd	6,885.00	Professional services - Infrastructure contracts
URS New Zealand Ltd	28,649.46	Professional services - Infrastructure contracts
Vodafone NZ Ltd	7,999.74	Mobile Phone contracts
Waitakere Arts & Cultural Dev Trust	91,406.25	Annual Operating grant
Waitakere Enterprise Trust Board	5,625.00	Project funding
Waitakere Enterprise Trust Board	11,250.00	Project funding
Waitakere Organic Centre Ltd	84,856.95	Composting operations contract
Waitakere Pacific Board	5,729.17	Project funding
Waitakere Properties Ltd	48,129.81	Bond refund
Waste Management NZ Ltd	386,073.46	Solid Waste collections contracts
Watercare Services Ltd	704,652.75	Bulk water supply contract - April 2008
Westec Ltd	35,286.64	Infrastructure physical works contracts
Westgate Properties Ltd	12,500.00	Vehicle crossing bond refund
WT Partnership	14,062.50	Professional services - New Lynn TOD contracts
Zeal Education Trust	28,125.00	Youth Facility management contract
Total cheque payments over \$5,000	18,699,492.23	
Other payments	60,041,779.67	
Total payments as per agenda item	78,741,271.90	



Waitakere Enterprise

**WAITAKERE ENTERPRISE TRUST BOARD
(Trading as Waitakere Enterprise)**

STATEMENT OF INTENT

For the three years commencing

1 July 2008

From the Chairman

2007 saw Waitakere Enterprise further establish itself as a key contributor to the professional services sector in Waitakere. The impact of the platform building and re-branding throughout 2006 and into 2007 is clear. Over the past 12 months, service level activity has over doubled. Customer satisfaction ratings across all programmes are between 90% and 95%.

This success is in no small part a result of the support and commitment of Council. The confidence in and commitment of Council to Waitakere Enterprise continues to go from strength to strength. The strength of the relationship with Council is unique in New Zealand and testimony to both organisations. It is certainly one that is appreciated by the Board and staff of Waitakere Enterprise.

The key economic challenge facing Waitakere is that 56% of the resident working population leaving the City each day to work. Furthermore, over the last 10 years, population growth accounted for two thirds of Waitakere's economic growth. This compares with population growth accounting for only 46% of the Auckland Region's economic growth and 34% of New Zealand's. These observations highlight the critical need to optimise the opportunities created through NORSGA and the planned intensification of New Lynn and Henderson.

Waitakere Enterprise is responding to this challenge through an extensive programme of business growth and attraction activities. Future priorities include connection to capital for growth businesses, optimising business migrants contribution through investment, business establishment and trade links and scaling up industry development activity.

The remaining issue is education and skills. The influence of education and skills on the economy is widely understood and includes productivity, GDP, competitiveness, unemployment, salary and wage levels, employment stability, income distribution, crime and location decisions of businesses and skilled workers. These influences are particularly acute in a high added value, technology, design and R & D driven economy which is New Zealand's future.

Waitakere's educational achievement statistics are weak. Waitakere has a high proportion of school leavers with no or low qualifications, relatively few bachelors degree holders or higher and a high proportion of adults with no or low school qualifications. The city must take up the challenge to address these issues if the benefits delivered by achievements in land and infrastructure are to be optimised.

Waitakere Enterprise is responding to the skills challenge through the direct provision of foundation learning for youth, migrants and refugees and actively supporting the school to work transition through careers information and Gateway. Advocacy to education and skill providers is also a key role currently being played. Future priorities of direct activity include expanding the current adult literacy provision, Pacific foundation trades and workplace literacy.

The Board of Waitakere Enterprise has considered Council's strategic priorities, the Outcome Statements and Priorities in the Long Term Community and Council Plan, and discussion with Council Directors, staff and Councillors to develop a compelling future for Waitakere Enterprise. This future is reflected in the 2008-2010 Statement of Intent.



Chairman

Contents

	Page:
1. Interpretation	2
2. Introduction	2
3. Purpose Statement	3
4. Strategic Context	3
5. Objectives	4
6. Nature and Scope of Activities	4
7. Performance Targets and Measures	5
8. Governance	5
9. Accounting Policies	6
10. Financial Policies	7
11. Activities for Which the Board Seeks Compensation from Council	8
12. Risk Management	8
13. Information to be Provided to the Council	9
14. Relationship Framework	10
Schedule One: Service Performance Objectives	
Schedule Two: Skilled and Productive Labour Force	

1. Interpretation

In this Statement of Intent unless the context otherwise requires:

- 1.1 Local Government Act: "Local Government Act" means the Local Government Act 2002;
- 1.2 Trust: "Trust" refers to the Waitakere Enterprise Trust Board trading as Waitakere Enterprise
- 1.3 Trust Deed: "Trust Deed" means the registered Trust Deed of the Waitakere Enterprise Trust Board;
- 1.4 Council: "Council" means the Waitakere City Council;
- 1.5 Statement of Intent: "Statement of Intent" means such statement as provided for in accordance with the requirements set out in section 64 of the Local Government Act 2002;
- 1.6 Trustees: "Trustees" means those people appointed to the Board by Waitakere City Council in accordance with the Trust Deed;
- 1.7 Shareholder: "Shareholder" means the Waitakere City Council;
- 1.8 Strategic City Objectives: "Strategic City Objectives" means those economic development and economic development related objectives adopted by the Council as part of the Long Term Community and Council Plan.

2. Introduction

- 2.1 The Trust meets the definition of a Council Controlled Organisation as defined by section 6 of the Local Government Act and is wholly owned by Waitakere City Council. Accordingly it is required to prepare and deliver to the shareholder a completed Statement of Intent on or before 30 June each year. The content of the Statement is specified in Schedule 8 of the Local Government Act 2002.
- 2.2 The Local Government Act also provides the opportunity for the shareholder to comment on a draft of the statement of intent. The trustees will consider these comments, prior to finalisation.
- 2.3 This statement has been prepared in accordance with these requirements.

3. Purpose Statement

- 3.1 The purpose of Waitakere Enterprise is to accelerate the sustainable economic growth of Waitakere
- 3.2 Waitakere Enterprise is the economic development agency for Waitakere City. Waitakere Enterprise is focussed on sustainably growing the local economy. Waitakere Enterprise does this by growing and attracting business and developing a skilled and productive labour force.

4. Strategic Context

4.1 Waitakere Enterprise primarily contributes to the Council's strategic platform of a *Strong Innovative Economy*.

4.2 The vision for the Strong Innovative Economy Platform is that:

Waitakere is a place of innovative economic activities, providing local quality work and development options for its people. Environmentally responsible businesses are supported and flourishing.

4.3 The success statements for the Strong Innovative Platform are:

- Waitakere has a strong, healthy economy
- Standards of living for residents improve
- Residents are increasingly working locally
- There are more good quality employment options available
- There are more environmentally responsible businesses growing locally and existing business are becoming more environmentally responsible
- Waitakere City is seen as a good place to do business, where Council responds to business needs

4.4 Waitakere Enterprise delivers programmes and initiatives that positively contribute to the following key indicators measured by Council:

- local GDP figures
- total number of employees in Waitakere
- proportion of the labour force with post secondary qualifications
- increase in the proportion of the workforce that is employed in Waitakere City
- proportion of the employees who live and work in Waitakere
- the number of new businesses in Waitakere

- business perceptions on the level of support received from Council for business activities

5. Objectives

5.1 As a Council-Controlled Organisation, the principle objectives of the Trust are stated in section 59 of the Local Government Act 2002, being:

- To achieve the objectives of its shareholders as specified in this Statement of Intent.
- To be a good employer.
- To exhibit a sense of social and environmental responsibility by having regard to the interests of the community in which it operates.
- To conduct its affairs in accordance with sound business practice.

5.2 In addition, the Trust has adopted the following long term objective based on Council's population, workforce and job growth projections:

To reduce the percentage of Waitakere's workforce leaving the city each day to work from 56% to 40% by 2021

5.3 In order to monitor progress towards this objective, an interim target of reducing the percentage of Waitakere's workforce leaving the city each day to work from 56% to 45% by 2016 has been set.

6. Nature and Scope of Activities

6.1 The Trust undertakes activities to accelerate Waitakere City's sustainable economic growth and thereby contributing to the achievement of strategic City objectives

These activities include:

- Contribution to the development of Council's economic development related strategies
- Advocating the economic development needs of the City
- Providing support to Council-led economic development initiatives
- Identifying and working with individuals, government, businesses, industries and/or institutions who either want to grow in Waitakere or contribute to the sustainable economic growth of Waitakere.
- Promoting Waitakere as business investment location and providing a key client service to new investment opportunities from inside and outside the City
- Growing the number, size and performance of existing businesses
- Stimulating business networks

- Supporting the growth of key strategic industries
- Facilitating and delivering education and skills development initiatives that meet local business's needs
- Providing foundation skill training and employment transition programmes for sustainable entry to the labour market
- Supporting community economic development initiatives

7. Performance Targets and Measures

A table of performance targets and measures is attached in Schedule One. These performance targets are presented according to each programme or initiative:

Grow and Attract Business

- New Business Start-Ups programmes
- Early Stage Business programmes
- Accelerated Business Growth programmes
- Business Attraction
- Key Client Management
- Business Networks
- Key Industry Support

A Skilled and Productive Labour Force

- Foundation skill programmes
- Post-school Transition initiatives
- Educational Achievement and Alignment initiatives

8. Governance

- 8.1 All Trustees are appointed by Council in accordance with the provisions of the Trust Deed and Council policy pursuant to section 57 of the Local Government Act 2002.
- 8.2 The Board aims to ensure that the business of the Trust is carried out in the best interest of the shareholder and with proper regard to corporate responsibility.
- 8.3 The primary role of the board of directors is to;
- Allocate capital and resources to enable the Trust to achieve its goals in a manner that best serves the interests of the shareholder as a whole.
 - Effectively represent and promote the interests of the shareholder with a view to adding long-term value.
 - Direct and supervise the management of the business affairs of the Trust including:

- Establishing goals and strategies that effectively implement and promote the long term strategic direction of Council
- Establishing policies for strengthening the performance of the Trust
- Appointing the CEO
- Monitoring the performance of management
- Deciding whatever steps are necessary to protect the Trust's financial position
- Ensuring that financial statements are true and fair and conform to law
- Ensuring the Trust adheres to high standards of ethics and corporate behaviour
- Ensuring the Trust has appropriate risk management/regulatory compliance policies in place.
- Satisfy itself that the Trust is achieving it's goals.
- Familiarise itself with issues of concern to the shareholder and keep the shareholder informed on a timely basis through quarterly reporting and using the principle of no surprises.
- Evaluate economic, political, social and legal issues that may impact on the Trust.

8.4 The Chairperson's role is to manage the Board effectively, to provide leadership to the Board and to interface with the Chief Executive Officer. The Chairperson's role includes completing an evaluation of the individual trustees and collective Board performance on an annual basis.

9. Accounting Policies

- 9.1 The Trust is a reporting entity under the Financial Reporting Act 1993 and its financial statements comply with that Act.
- 9.2 Financial statements are prepared in accordance with Generally Accepted Accounting Practice in New Zealand, applying the Framework for Differential Reporting for entities adopting the New Zealand equivalents to the International Financial Reporting Standards and it's interpretations as appropriate to not for profit entities that qualify for and apply differential reporting concessions.
- 9.3 Reliance is placed on the Trust being a going concern. The Waitakere City Council through its annual plan and budgeting process sets and approves the Trust's annual compensation for services provided. Continuity of the funding has been established through a "3 Year Funding and Service Agreement".

- 9.4 The measurement base adopted is that of historical cost.
- 9.5 Particular accounting policies which materially affect the measurement of the Trust's surplus or deficit from operations and financial position are:
- Revenue is recognised when earned.
 - All fixed assets are valued at historical cost. Depreciation is provided on a straight line basis at rates calculated to allocate the asset's cost, less estimated residual value over its estimated useful life.
 - Depreciation rates are:

Computer Hardware	33%
Computer Software	20%
Office Equipment	20%
Office Fittings	20%
 - The financial statements have been prepared on a basis exclusive of Goods and Services Tax. All items in the statement of financial position are stated net of Goods and Services Tax with the exception of receivables and payables which include Goods and Services Tax.
 - Provision is made in respect of the Board's liability for annual leave. Annual leave has been calculated on an actual entitlement basis at current rates of pay.

10. Financial Policies

- 10.1 The Trust is a non-profit entity and, for financial prudence, seeks to operate at a retained earnings of \$0-\$75 000 per annum.
- 10.2 All surpluses generated from non-Council funded programmes are applied to advance the achievement of the strategic City objectives
- 10.3 The Trust intends to build a cash reserve of \$500 000 by 30 June 2010. This is required as working capital, to moderate extraordinary negative financial impacts and to allow the Board to invest in establishing new programmes and activities that advance the achievement of the strategic City objectives
- 10.4 In order for the Trust to meet its objectives, it may be in its interest to initiate transactions which bring about a memorandum of understanding, partnership or joint venture with existing organisations. Any decision to initiate such transactions will be subject to approval by the Board of Trustees and the procession of the Board's Deed of Trust. Shareholder approval is required where commitments exceed \$500,000.
- 10.5 As a not-for-profit Charitable Trust, the matter of the ratio of shareholders funds to total assets does not apply

11. Activities for Which the Board Seeks Compensation from Council

- 11.1 Every three years, commencing 1 July 2003, the Trust has prepared a proposal for base funding sought for the subsequent three years. The next proposal will be submitted for the three years beginning 1 July 2009. The activities identified in this proposal will be consistent with the Trust's Statement of Intent. The proposal will be considered under Council's normal budgeting processes. The resulting agreed compensation will be articulated through a three year funding agreement.
- 11.2 Specific activities to be undertaken in each year of the three year funding agreement will be articulated in an annual service agreement.
- 11.3 Any additional activity to that compensated for in the three year agreement will require additional compensation agreed by the Trust and Council.

12. Risk Management

- 12.1 The framework for managing and reporting on risk will follow the current standard AS/NZS 4360: 1999.
- 12.2 Each year the Board will ensure there is a formal evaluation of the Trust's exposure to risk and satisfy itself that appropriate strategies are in place to manage or eliminate risk.
- 12.3 In assessing and managing risks it is recognised that the Board is risk adverse and consequently the Board will manage the Trust to minimise risk and the potential for losses.
- 12.4 The management mitigation/ control of risk will be undertaken through:-
- Detailed financial feasibility studies
 - Service selection based in comprehensive research and informed opinion.
 - Knowledge of business and political cycles
 - Cash flow management
 - Debt management where appropriate
 - Risk sharing where appropriate
 - Employment of expert management advice
 - Appointment of skilled and experience Trustees
 - Establishment of a risk management policy and monitoring procedures
- 12.5 Additional business risks in the form of Trust continuity, statutory compliance, financial management and control, professional indemnity etc will be managed in the normal manner and in accordance with the risk management policy.

13. Information to be Provided to the Council

13.1 The Trust will provide information which meets the requirements of the Charitable Trusts Act 1957, the Local Government Act 2002, and the Financial Reporting Act 1993 in order to enable the shareholders to make an informed assessment of the Trust's performance.

13.2 The following information will be made available to the shareholder:

- Quarterly management reports within one month at the end of the September, December, March and June quarters including a Statement of Financial Position and Statement of Service Performance
- A half yearly report in accordance with S.66 of the Local Government Act 2002 and any other information that the Directors deem appropriate.
- An annual report in accordance with S 67, 68 and 69 of the Local Government Act 2002, the reporting requirements of the Charitable Trusts Act 1957 and the Financial Reporting Act 1993 and any other information that the Directors deem appropriate.
- Any other information required by the shareholders, upon receipt of a joint written request from the shareholder through the Chief Executives or authorised person(s). The Local Government Act 2002 does not require the disclosure of sensitive information that may be properly withheld if a request for that information were made under the Local Government Official Information and Meetings Act 1987.
- An annual Statement of Intent in accordance with S.64 of the Local Government Act 2002 and any other information that the Directors deem appropriate.

13.3 In addition to, but not inconsistent with, s.64 of the Local Government Act 2002, the following timeline will be followed;

- A draft Statement of Intent will be submitted by 15 February each year
- Council will provide comment by 31 March each year
- In consideration of Council's comment, a final draft Statement of Intent will be submitted by 30 April each year

14. Relationship Principles

14.1 The Trust is committed to best practice in public partnering with Council. In particular, the Trust is committed to: -

- aligning to community and Council strategic goals and objectives
- contributing to strategy, policy and planning phases undertaken by Council.
- welcoming Council staff to interact directly with the Trust to develop staff expertise in implementation thus promoting practical policy formation.
- a business relationship that secures best value from both entities and enables close cooperation whilst recognising the particular roles and functions of each.
- a formal reporting relationship with Council to ensure that Councillors have an opportunity to interact with the Trust and provide political direction.
- an open, responsive and collegial working relationship with Council officers at all levels.
- acting in concert with Waitakere Properties Limited.

SCHEDULE ONE

SERVICE PERFORMANCE OBJECTIVES

Part One: Grow And Attract Businesses

Part Two: Skilled And Productive Labour Force

PART ONE:

Grow and Attract Business

A29

Activity	Performance Objectives 1 July 2008-30 June 2009	Annual Performance Objectives by 30 June 2011
<p>NEW BUSINESS START-UPS</p> <p>Deliver the 'Powerful Start' new business start up information, workshop and coaching programme</p>	<p>400 new business information enquiries serviced through BIZ programme 90% "mystery shopper" satisfaction rating 75 complete new business workshop series</p> <p>The new businesses survival rate for the first 12 months exceeds the national average</p> <p>Baseline one year turnover and FTE growth of participants established</p> <p>40 participants complete the programme</p> <p>100% of those that complete the programme produce approved business plans or back to work plans</p> <p>7 schools participate 200 students participate 25 new businesses established</p>	<p>400 new business information enquiries serviced through BIZ programme 90% "mystery shopper" satisfaction rating 75 complete new business workshop series</p> <p>The new businesses survival rate for the first 12 months exceeds the national average</p> <p>Objectives set once baseline is established</p> <p>40 participants complete the programme</p> <p>100% of those that complete the programme produce approved business plans or back to work plans</p> <p>10 schools participate 300 students participate 40 new businesses established</p>
<p>Deliver Work and Income Be Your Own Boss programme to transition beneficiaries to business or work</p>		
<p>Run the West Auckland Region of the Young Enterprise Scheme</p>		

Activity	Performance Objectives 1 July 2008 - 30 June 2009	Annual Performance Objectives by 30 June 2011
EARLY STAGE BUSINESS Deliver New Zealand Trade and Enterprise's <i>Enterprise Training Programme</i> to provide foundation business skills to early stage businesses	175 Waitakere businesses participate in the programme 35 training workshops held in Waitakere	175 Waitakere businesses participate in the programme 35 training workshops held in Waitakere
Deliver <i>Business Mentors New Zealand</i> mentoring programme	1 Maori Trustee Training programme delivered 75 matches made Grade A provider status maintained	1 Maori Trustee Training programme delivered 75 matches made Grade A provider status maintained

Activity	Performance Objectives 1 July 2008 - 30 June 2009	Annual Performance Objectives by 30 June 2011
<p>ACCELERATED GROWTH BUSINESS</p>		
<p>Deliver the 2008 Waitakere Business Awards programme</p>	<p>75 entries 500 attend Gala Dinner event \$75,000 of unpaid/un-sponsored media coverage Baseline data for revenue, EBIT and FTE levels of participants established</p>	<p>125 entries 600 attend Gala Dinner event \$100,000 of unpaid/un-sponsored media coverage Revenue, EBIT and FTE growth performance of participants is twice the national average 3 years after being a finalist in the awards</p>
<p>Deliver a High Growth Programme of accelerated growth planning, advice and connection to joint ventures and/or venture capital to unlock growth potential</p>	<p>5 participants selected Baseline data for revenue, EBIT and FTE levels of participants established</p>	<p>10 participants selected Revenue, EBIT and FTE growth performance of participants is three times the national average 3 years after being selected as a participant</p>
<p>Establish new business services for Waitakere growth businesses such as R&D Tax Credit Advice, advice on accessing central government business growth funding, a market analysis service and one-on-one strategic business advice</p>	<p>150 clients Baseline data for revenue, EBIT and FTE levels of clients established</p>	<p>300 clients Revenue, EBIT and FTE growth performance of clients exceeds the national average 3 years after becoming a client</p>

A32

Activity	Performance Objectives 1 July 2008 - 30 June 2009	Annual Performance Objectives by 30 June 2011
ACCELERATED GROWTH BUSINESS (continued) Deliver advanced level "Powerful Ideas for Business" seminars	8 seminars delivered Cumulative attendance of 125 participating individuals 90% satisfaction	14 seminars delivered Cumulative attendance 300 participating individuals 90% satisfaction
Deliver the New Zealand Trade and Enterprise Escalator Programme	20 participants	20 participants
BUSINESS ATTRACTION, EXPANSION AND RETENTION Deliver a business attraction service for businesses seeking to locate in Waitakere	50 clients facilitated 20 business locate, expand or are retained in Waitakere using the service 200 new jobs	100 clients 40 businesses locate in Waitakere using the service 500 new jobs

Activity	Performance Objectives 1 July 2008 - 30 June 2009	Annual Performance Objectives by 30 June 2011
<p>KEY CLIENT MANAGEMENT</p> <p>Deliver the Waitakere 'A-list' Key Client Management Service in partnership with Council</p>	<p>40 A-list clients</p> <p>100% of Waitakere's A-list companies remain in Waitakere</p> <p>100% service level commitment on consents processing timeframes in accordance with the joint WE/WCC Service Level Agreement achieved</p> <p>80% client satisfaction</p> <p>5 enter the Waitakere Business Awards Board membership of Community Waitakere maintained</p> <p>Support provided to specific initiatives as agreed</p>	<p>50 A-list clients</p> <p>100% of Waitakere's A-list companies remain in Waitakere</p> <p>100% service level commitment on consents processing timeframes in accordance with the joint WE/WCC Service Level Agreement achieved</p> <p>80% client satisfaction</p> <p>5 enter the Waitakere Business Awards Board membership of Community Waitakere maintained</p> <p>Support provided to specific initiatives as agreed</p>
<p>Support Council's ambitions for the Community Sector</p>	<p>15 events per annum</p> <p>Total cumulative attendance 1,300</p> <p>Business Club membership exceeds 2,000</p>	<p>15 events per annum</p> <p>Total cumulative attendance 1,300</p> <p>Business Club membership exceeds 3,000</p>
<p>BUSINESS NETWORKS</p> <p>Sponsor, support, market and grow the Waitakere Business Club, Waitakere City Rotary State of the Nation and Business After 5 events</p>	<p>6 events held per annum</p> <p>Total cumulative attendance 200</p>	<p>6 events held per annum</p> <p>Total cumulative attendance 200</p>
<p>Deliver the West Women networking series</p>		

A34

Activity	Performance Objectives 1 July 2008 - 30 June 2009	Annual Performance Objectives by 30 June 2011
<p>KEY INDUSTRY SUPPORT</p>		
<p>Implement Council's allocation to purchase services from Tourism Auckland</p>	<p>8 advertisers in 'The Auckland Guide' Membership of Study Auckland maintained</p>	<p>Tourism development programme implemented in accordance with the Waitakere Economic Development Strategy</p>
<p>Maintain <i>Destination Waitakere</i> website</p>	<p>135 businesses featured</p>	<p>150 businesses featured</p>
<p>Deliver a key client filming permit service</p>	<p>150 filming permits 95% processed within 48 hours</p>	<p>200 filming permits 95% processed within 48 hours</p>
<p>SUSTAINABLE BUSINESS</p>		
<p>Develop Waitakere Enterprise as a leader in sustainable practice</p>	<p>The impact of WE's activities be carbon zero</p>	<p>The impact of WE's activities be carbon zero</p>
<p>Mainstream sustainable business practice advocacy and advice into WE's services</p>	<p>Sustainable Action Plan performance objectives meet or exceeded</p>	<p>Sustainable Action Plan performance objectives met or exceeded</p>
	<p>A sustainable practice component to all Business Awards categories</p>	<p>A sustainable practice component to all Business Awards categories</p>
	<p>All business advisors trained in sustainable business practice</p>	<p>All business advisors trained in sustainable business practice</p>
	<p>Actively support the Sustainable Business Network</p>	<p>Actively support the Sustainable Business Network</p>
	<p>Investigate the feasibility of sustainable consumer information to be incorporated into the Target Your Market service</p>	<p>Sustainable consumer information fully incorporated into the Target Your Market service</p>
	<p>Sustainable business a priority sector under the Investment Facilitation service</p>	<p>Sustainable business a priority sector under the Investment Facilitation service</p>

A35

PART TWO:

Skilled and Productive Labour Force

A36

Activity	Performance Objectives 1 July 2008 - 30 June 2009	Annual Performance Objectives by 30 June 2011
FOUNDATION SKILLS		
Deliver foundation skills youth and ESOL programmes	80% average occupancy of 39 places and 60% achievement of positive destination outcomes for youth training 10 places for Alternative Education secondary school students Maori and Pacific youth participation exceeds 50%	80% occupancy of 75 places and 60% achievement of positive destination outcomes for youth training 10 places for Alternative Education secondary school students Maori and Pacific youth participation exceeds 50%
Deliver adult numeracy and literacy based programme	80% average occupancy of 59 places and 60% achievement of positive destination outcomes for ESOL training	80% average occupancy of 59 places and 60% achievement of positive destination outcomes for ESOL training
Deliver ESOL after school programmes	100% average occupancy of 30 adult literacy places An average of 20 enrolments	100% average occupancy of 90 adult literacy places An average of 50 enrolments
Establish an International Computer Drivers Licence IT literacy programme	50 participants	200 participants
Implement the 'IT Compass' IT diagnostic and advisory tool	60 businesses 25 community organisations and 10 schools participate in testing	Tool online on the Waitakere Enterprise Website for general use

Activity	Performance Objectives 1 July 2008 - 30 June 2009	Annual Performance Objectives by 30 June 2011
<p>POST-SCHOOL TRANSITION</p> <p>Implement the CONNECT Waitakere programme</p> <p>Implement the Gateway programme in partnership with Waitakere Secondary Schools</p> <p>Support and champion the Waitakere Youth Transition Service</p>	<p>DVD, website and teaching resource integrated into the curriculum of 5 secondary schools</p> <p>400 students participate</p> <p>Average unit standard achievement exceeds the national average of 16</p> <p>Membership of the Steering Group and Advisory Group maintained</p>	<p>Updated DVD, website and teaching resource integrated into the curriculum of all Waitakere Secondary Schools</p> <p>500 students participate</p> <p>Average unit standard achievement exceeds the national average</p> <p>Membership of the Steering Group and Advisory Group maintained</p>

Activity	Performance Objectives 1 July 2008 - 30 June 2009	Annual Performance Objectives by 30 June 2011
<p>EDUCATIONAL ACHIEVEMENT AND ALIGNMENT</p> <p>Support and champion the Waitakere Education Sector Trust and implementation of the Waitakere Learning Plan</p> <p>Support and champion the expansion of Unitec in Waitakere including advocating for a multi-provider trade and technology campus</p> <p>Present key economic trends and futures to Waitakere Secondary School Principal's, advocating the educational needs of the City</p> <p>Provide a leadership role to the local PTE network, advocating alignment and relevance</p> <p>Conduct an annual industry training and apprentice graduation for Waitakere</p>	<p>Membership of the Waitakere Education Sector Trust</p> <p>90% satisfaction from key Unitec staff</p> <p>One presentation delivered per annum</p> <p>Chair role of ESOL providers network maintained</p> <p>Youth providers network established</p> <p>85 graduates celebrated</p>	<p>Membership of the Waitakere Education Sector Trust maintained</p> <p>90% satisfaction from key Unitec staff</p> <p>One presentation delivered per annum</p> <p>Leadership role in both ESOL and Youth providers network maintained</p> <p>150 graduates celebrated</p>



Graeme Campbell
Director - Strategy
Waitakere City Council
P O Box 93 102
Waitakere

23 May 2008

Dear Graeme,

Thank you for communicating council's comments with respect to Waitakere Enterprise's Draft Statement of Intent. The Board has considered the comments and made amendments as outlined below;

1. Prioritisation of the Trust's activities

The organisation's future priorities have been included in the Chairman's introduction.

2. Objectives

Section 5 has been amended to align objectives with Council's medium level forecasted population, workforce and jobs growth. This has resulted in a revision of the target date in the objective being extended from 2020 to 2021 and the addition of an interim target for 2016.

3. Closer alignment with Council's sustainability objectives

A section headed 'Sustainable Business' has been added to the Service and Performance Objectives Schedule. Our approach is two-fold;

- i) To develop Waitakere Enterprise as a leader in sustainable practice
- ii) To mainstream sustainable business practice advocacy and advice into WE's services

In relation to (i), you will recall that WE won the Trail Blazer Award in the Not-for-Profit category of the Sustainable Business Network's Northern Region Awards in 2007. The organisation is building on this with an internal Sustainable Action agenda that includes a carbon zero objective.

With respect to mainstreaming sustainable business practice, we have included a sustainable practice component in all Business Awards categories, will be training all front line business advisory staff in sustainable business practice, are actively supporting the work of the Sustainable Business Network, have established sustainable business as a priority sector under the investment facilitation service and are looking at including sustainable purchasing

customer types in the market information we provide through the Target Your Market service.

4. Opportunities to expand service delivery targets by 2011 within the context of externally funded programmes

No amendment has been made to the externally funded service volume. As reported to Council, WE's service volume doubled in 2007 to a point where output within current resources has been optimised. The targets for 2008/9 reflect this.

Naturally, WE pursues all opportunities for external programme funding that contributes to our objectives. However, it is difficult to provide certainty of growth in endeavours where funding is outside WE's control. As a result, any further revision to 2011 will be largely as a result of central government policy and funding changes that are currently unknown.

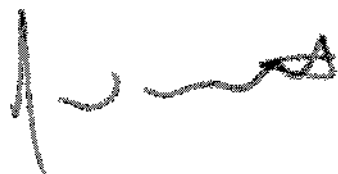
5. Investment Facilitation targets

It is acknowledged that these targets are ambitious, particularly in the current economic context. However, we have chosen to maintain these targets and report the reasons for any variances should they occur.

6. Other Amendments

The Gateway programme has been added since submitting the Draft Statement of Intent to Council for comment. This addition is now reflected in the Service and Performance Objectives Schedule.

Yours sincerely

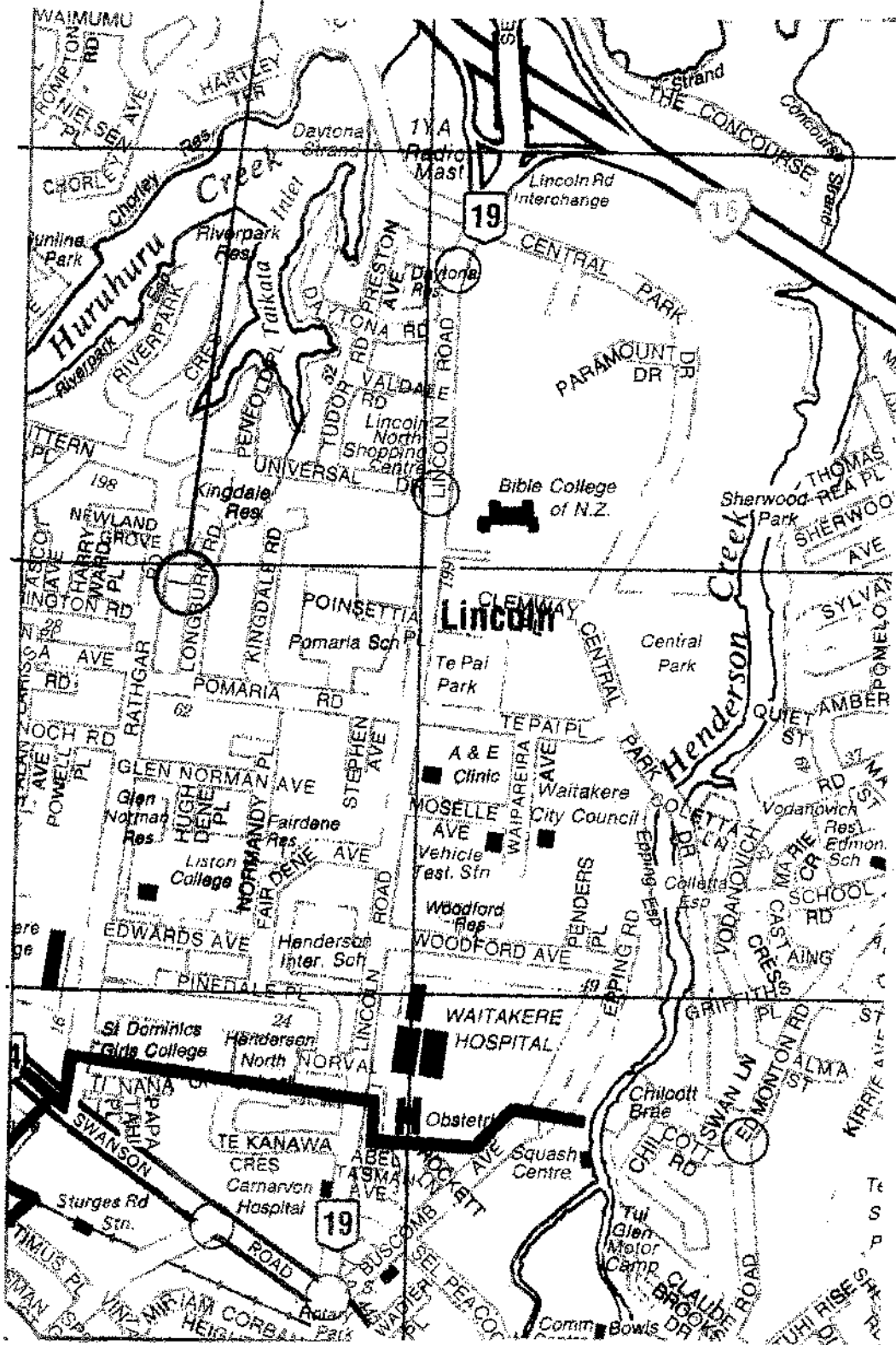


John Wadsworth
Chief Executive

Cc Steve Wilcox

" A "

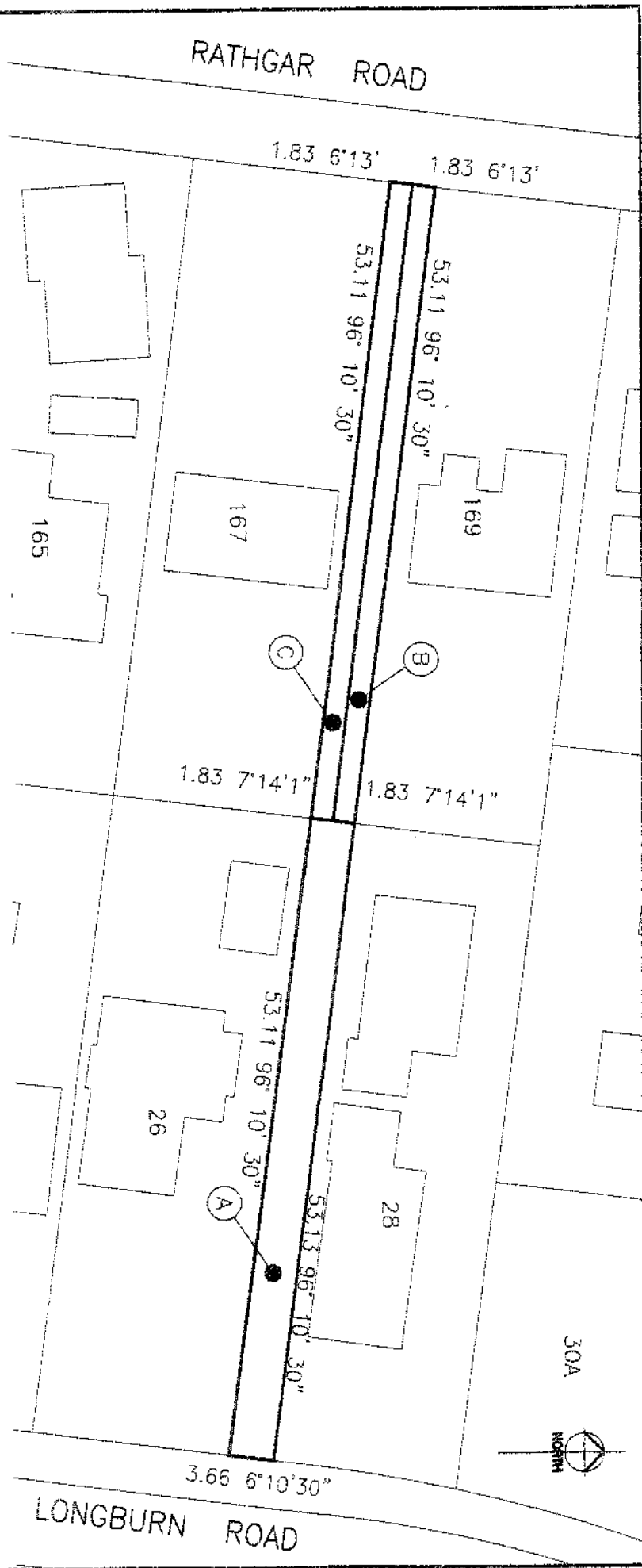
Accessway



A42

00005

B



ACCESSWAY RESERVE TO BE REVOKED
SCHEDULE
 ACCESSWAY RESERVE TO BE REVOKED

SHOWN	DESCRIPTION	AREA
(A)	Pl. Lot 79, D.P. 42984	194m ²
(B)	Pl. Lot 79, D.P. 42984	97m ²
(C)	Pl. Lot 79, D.P. 42984	97m ²

SURVEYED	DATE	REVISION	BY	DATE	W A I T A K E R E C I T Y C O U N C I L 167-169 RATHGAR ROAD ACCESSWAY RESERVE TO BE REVOKED PLAN
DESIGNED	11/07				
DRAWN					
COMPUTED M					
DWG CHK					
DGN CHK					ORIGINAL SCALE 1 : 500 SHEET 1 OF 1 DRAWING NO. 15849 CONTRACT NO.
LOAD FILE	11/07				A4 REVISION

A43

00006