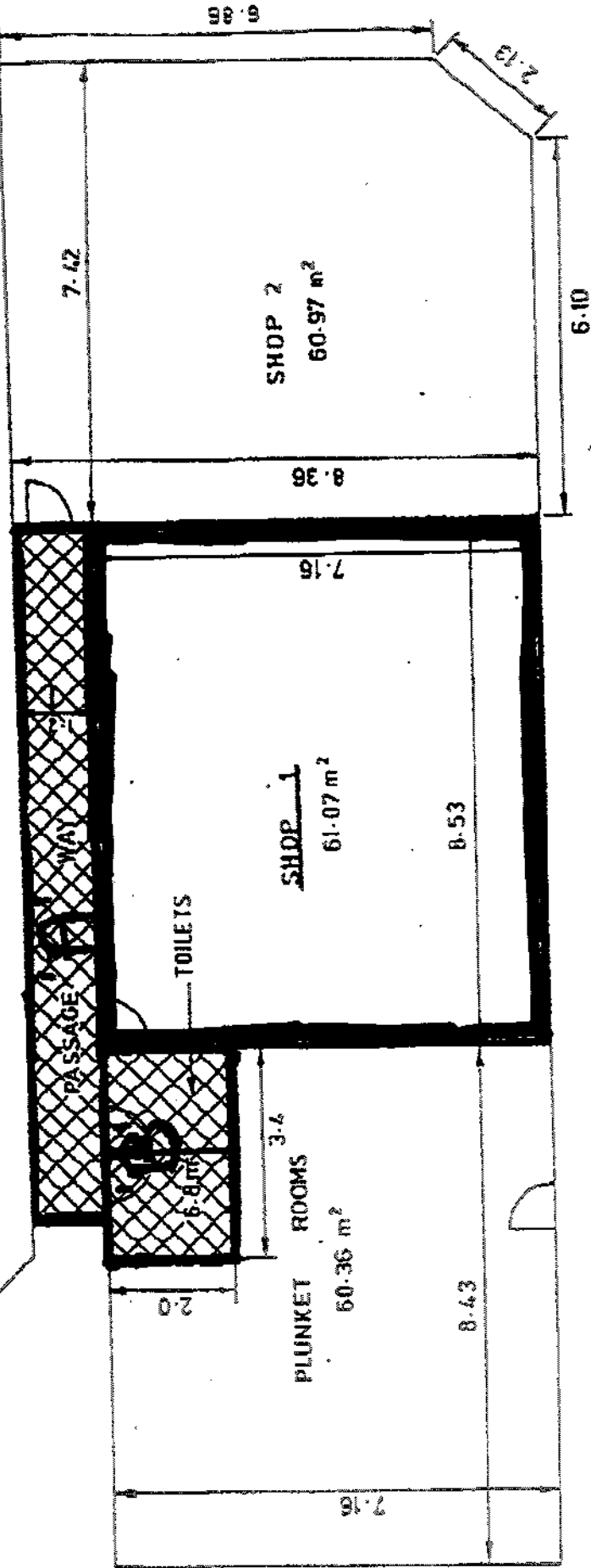


COMMUNITY CENTRE HALL

TOTAL P.02



A1

LEGEND



COMMON AREA

COMMERCIAL PORTION TE ATATU COMM. CENTRE
 AREA OF SHOPS TO BE LEASED (PT6 DP. 68646)

1 : 100

4936 / 131

Waitakere City Council

Financial Summary

August 2005

16.67% of Financial Year

	Actual Cost To Date	%age Spent	Budget Provision
<u>Operating Costs</u>			
Executive Suite	248,179	10.64%	2,332,272
Public Affairs	181,085	4.61%	3,926,499
Finance	266,704	17.19%	1,551,328
Corporate & Civic Services	3,788,065	19.18%	19,753,543
Strategy and Development	1,131,781	11.30%	10,012,003
City Services			
Asset Management	6,835,848	14.08%	48,554,431
Regulatory Services	289,508	5.95%	4,865,953
Planning and Community	860,349	11.79%	7,297,318
Project Services	269,080	10.40%	2,587,575
Service Management	949,125	16.01%	5,929,382
<i>Total City Services</i>	<i>9,203,910</i>	<i>13.29%</i>	<i>69,234,659</i>
Other Expenses	1,617,817	16.63%	9,726,264
Total Operating Costs	16,437,541	14.11%	116,536,568
<u>Capital Expenditure</u>			
Executive Suite	0	0.00%	10,000
Public Affairs	2,414	0.39%	625,045
Corporate & Civic Services	480,928	3.52%	13,669,800
Strategic Projects	5,447,309	10.26%	53,103,329
City Services			
Asset Management	1,355,990	1.95%	69,715,277
Regulatory Services	474	0.04%	1,071,000
Planning and Community	124,007	2.78%	4,453,684
Project Services	1,493,188	4.14%	36,110,171
<i>Total City Services</i>	<i>2,973,659</i>	<i>2.67%</i>	<i>111,350,132</i>
Total Capital Expenditure	8,904,310	4.98%	178,758,306
Total Council Costs	25,341,851	8.58%	295,294,874

Special Funds
August 2005

	Opening Balance	Receipts	Expenditure to Date	Interest	Receipts Interest Allocation	Closing balance	Expected Income / (Committed Expense)	Available balance Year End
Restricted Funds								
Community Sport Fund	721,406	29,127		3,808	2,170	756,511	481,896	1,238,407
Auckland Regional Services Trust (Arts)	727,964			6,680	8,202	742,846	-553,890	188,956
Land Subdivision Reserve Fund	4,480,549	643,610	-77,554		57,153	5,103,758	-2,902,933	2,200,819
Waikumete Cemetery & Park Fund	2,119,655				23,846	2,143,501	-162,000	1,961,501
Harbourview Oranghina Fund	448,289	430,000	-2,709		9,866	885,446	-869,231	16,155
	8,497,863	1,102,737	-80,263	10,488	101,237	9,632,062	-4,026,224	5,605,837
Non Restricted Funds								
Waitemata Asset Acquisition Fund	93,071					93,071	-93,071	0
New Lynn Asset Acquisition Fund	347,107					347,107	-347,107	0
Disaster Recovery Fund	2,497,272					2,497,272		2,497,272
Rural Fire Recovery Fund	9,916					9,916		9,916
Quarry Aftercare Fund	742,173					742,173	-45,000	694,173
Testing Station Plant Renewal Fund	30,000					30,000		30,000
Community Wellbeing Fund	620,861				6,985	627,846	-20,000	607,846
	4,340,400	0	0	0	6,985	4,347,385	-503,178	3,839,207
Total Special Funds	12,838,263	1,102,737	-80,263	10,488	108,222	13,979,446	-4,534,402	9,445,044

	TERM DEBT (to fund long term assets)	(\$000's)
Budget year end term debt position per 2004/2005 Annual Plan	Approved Annual Plan term debt	296,681
	Further term debt approved by Council during 2005/2006	-
	Budget 2005/2006 year end gross term debt	296,681
	Less funds introduced from Development Contributions	12,974
	Less Current and future funding for strategic land acquisitions	50,600
	Forecast year end Sinking Fund Commissioner funds	2,905
	Anticipated 2005/2006 Year End Net Term Debt	230,202

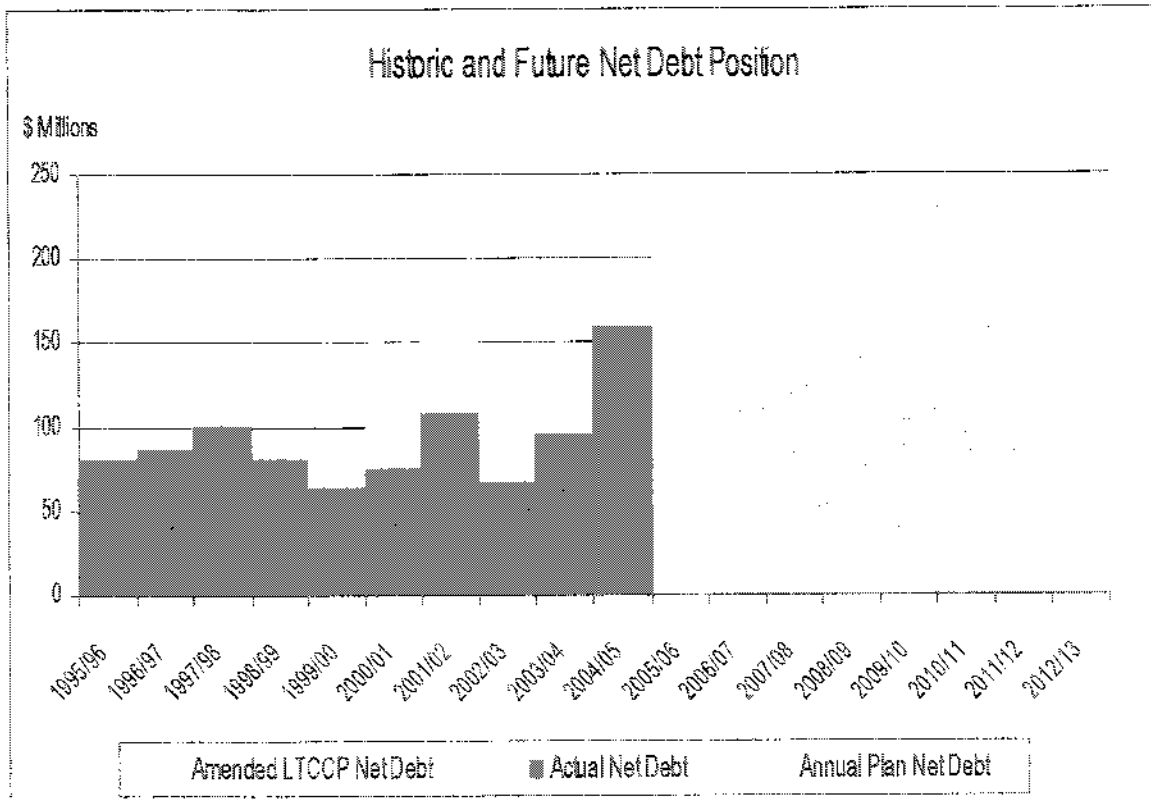
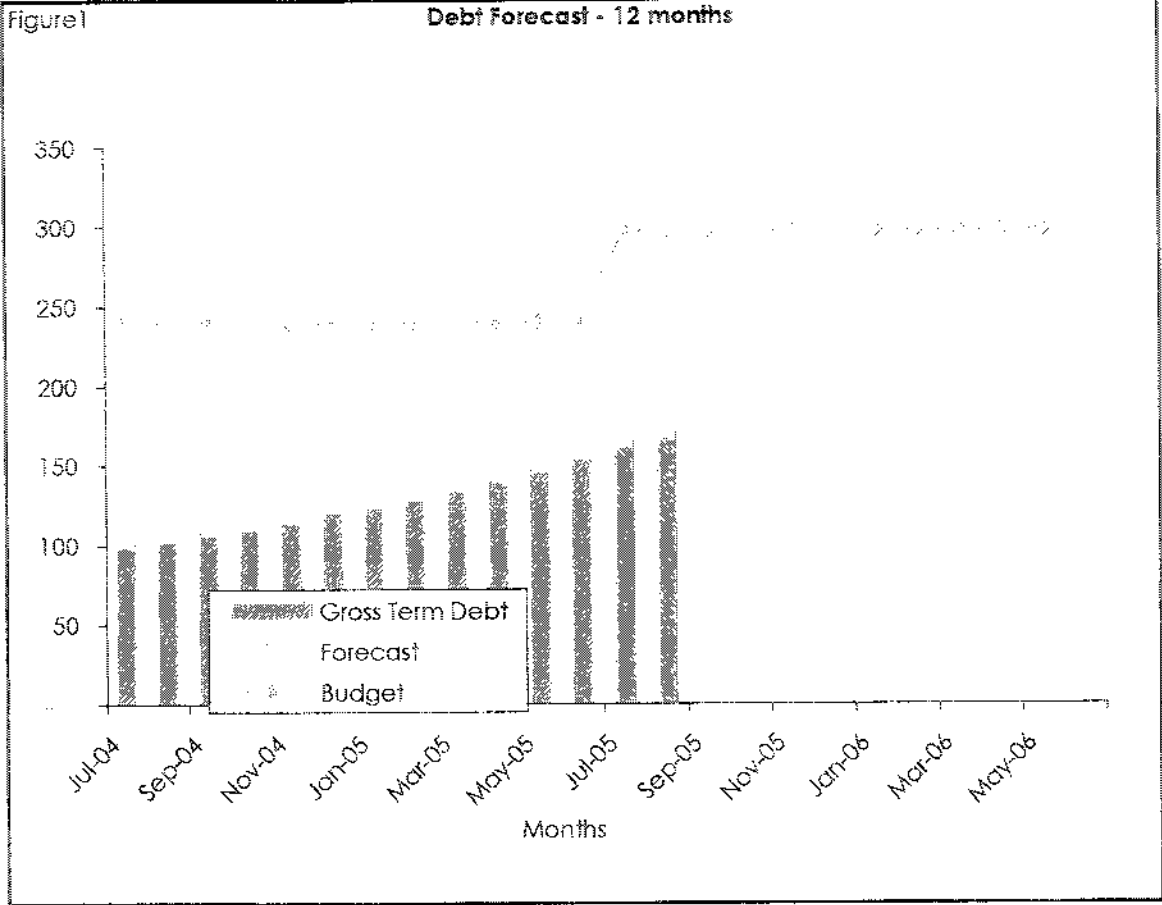
	TERM DEBT PORTFOLIO	Estimated (\$000's)	Estimated (\$000's)
Term debt position at 31 August 2005	Term debt borrowed externally	171,096	164,456
	Special funds (used to reduce Council's external borrowing)	-	-
	Gross term debt	171,096	164,456
	Total Sinking Fund Commissioner assets	3,813	3,788
	Net term debt	167,282	160,668

Term debt - source of funds at 31 August 2005	Debenture stock - fixed rate (security: Debenture Trust Deed)	67,431	67,431
	Debenture stock - floating rate (security: Debenture Trust Deed)	82,025	82,025
	Secured bank loans (security: Debenture Trust Deed)	15,000	15,000
	Unsecured bank loans / (investments)	6,640	0
	Finance Leases (security: associated asset)	0	0
	External borrowing	171,096	164,456
	Special funds (used to reduce Council's external borrowing)	0	0
	Gross term debt requirement	171,096	164,456

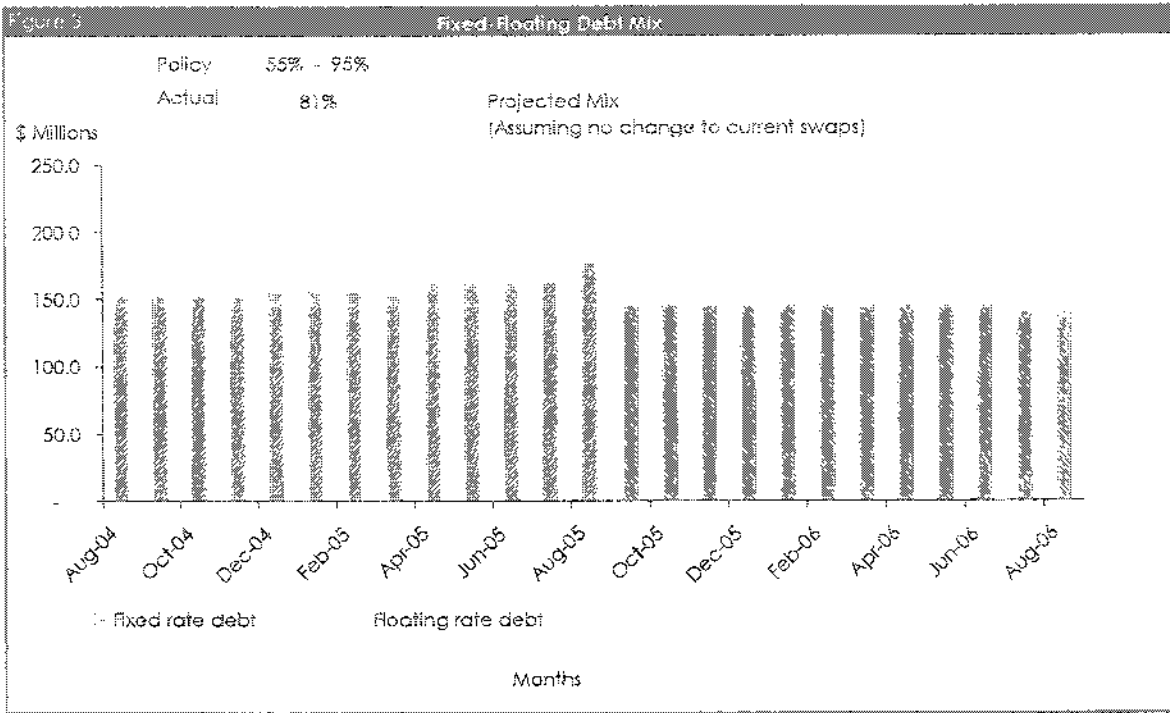
	WORKING CAPITAL	(\$000's)	(\$000's)
Working capital borrowing at 31 August 2005	Unsecured bank loans / (investments)	1,309	10,700
	Special funds (used to reduce Council's external borrowing)	13,237	12,812
	Council working capital borrowing requirement	14,546	23,512

	CASH INVESTMENTS	(\$000's)	(\$000's)
Cash investments held 31 August 2005	Other Cash Investments	-	-
	Total cash investments	-	-

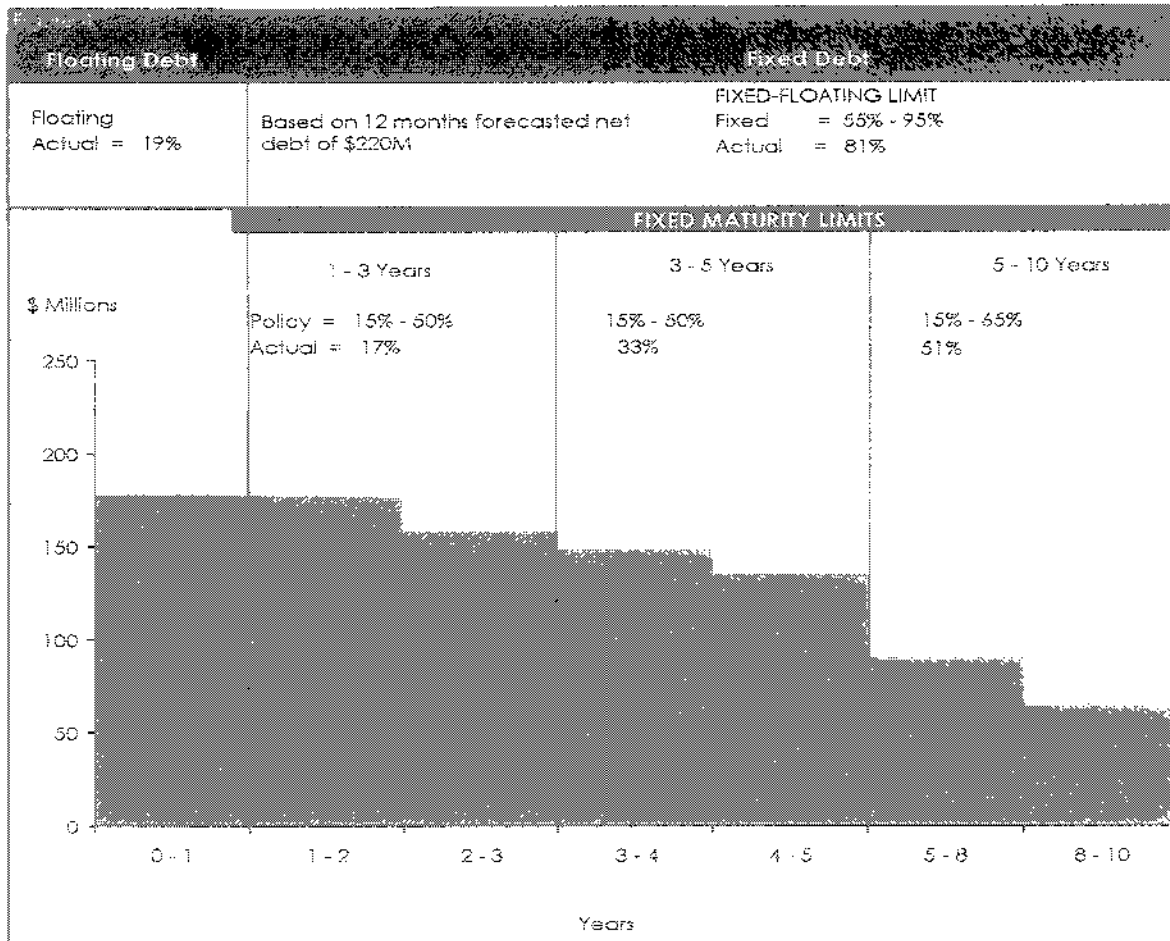
Debt Forecast

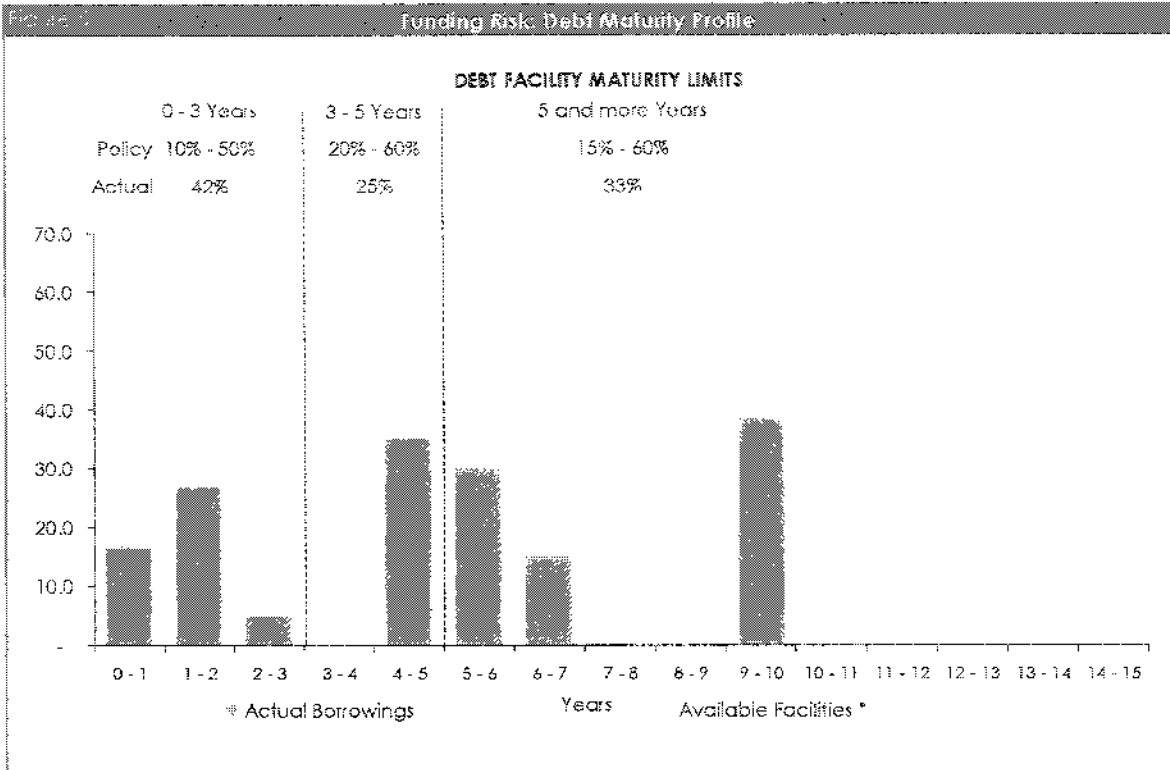


Fixed-Floating Debt Mix



Net Interest Rate Repricing Risk Profile





(1) Council is in the unique position of having \$85 million committed funding facilities. The nature of these facilities may, depending on the utilisation, result in a breach of the funding maturity limits. As this facility is very much in Council's favour this is an acceptable breach of policy.

Summary of Debt Sources

Council Approved Debt Sources	Total		
	Committed Funding Sources	Usage	Available
Bank Loans			
Short Term (uncommitted)	\$0.0	\$0.0	\$0.0
Long Term (committed)	\$100.0	\$15.0	\$85.0
Commercial Paper			
Bank Overdraft	\$1.0	\$0.0	\$1.0
Senior Bonds			
Retail	\$9.8	\$9.8	\$0.0
Wholesale	\$139.7	\$139.7	\$0.0
Other	\$0.0	\$0.0	\$0.0
TOTAL	\$250.5	\$164.5	\$86.0

The Liability Management and Investment Policy gives guideline parameters for the mix of fixed/floating interest rate management and maturity profiling. From time to time the actual position may marginally be outside the recommended guideline as a result of volatility of market interest rates or the Council's actual cash position.

Notes:

Working capital borrowing is necessary due to fluctuations in the timing of operating revenue and expenditure. The working capital borrowing requirement also includes internal deficits relating to prior years. External working capital borrowing is reduced by the use of internal special funds with any surplus requirement funded by way of unsecured bank loans.

Gross Term debt is the borrowing relating to long term loan funded capital works projects. External borrowing to fund term debt is reduced by the use of internal special funds with the surplus requirement funded by way of secured or unsecured short term bank loans, fixed or floating medium or long term bonds and finance leases.

The managed debt portfolio refers to the portion of Council's total debt portfolio that is managed to reduce interest rate risk, liquidity/funding risk, counterparty risk and operational and legal risk as defined in the Liability Management and Investment Policy. The portfolio is managed on the external net term debt requirement excluding finance leases. I.e. it is net of the special funds that have been used to reduce the external term debt requirement and the sinking fund balance. Working capital is not included in the managed debt portfolio.

Special Funds are cash funds either collected through rates or vested to Council that have been 'set aside' for specific future spending. The funds are used in the interim to reduce Council's requirement to borrow externally. The fund is managed via accounting entries and a monthly interest allocation is made to the funds based on the Council's weighted average cost of borrowing for that period.

Description of Graphs:

Figure 1

Gross term debt (blue) is the actual gross term debt position of Council as defined in the notes above. The *Forecast* (orange) is the projected gross term debt level per month in the current financial year, the figures are obtained from capital works timing forecasts (provided by budget managers on a monthly basis) and the current debt maturity profile. The *Budget* (green) line represents the gross public debt as approved in the 2005/2006 Annual Plan.

Figure 2

The prior year net term debt figures (dark blue section) are obtained directly from the published Annual Reports. The Annual Plan net term debt figures (light blue section) are obtained from that years published Annual Plan. The orange section is the Long Term Council Community Plan (amended) net term debt as published for 2003/2004 - 2012/2013.

Figure 3

The fixed (blue) and floating (orange) interest rate mix, both historic and projected, based on the 12 month rolling forecast net debt requirement. The Liability Management and Investment Policy minimum is 55% fixed and maximum 95% fixed. The positioning of the portfolio between policy minimum and policy maximum is dependent on the current and forecast financial market outlook.

Figure 4

Interest rate risk profile. Figure 4 shows, given the current fixed/floating rate mix and the debt forecast (assuming no changes to current swaps), the percentage of current fixed rate debt that will mature in future years. This enables Council to recognise and reduce significant concentrations of interest rate risk that may arise in future years. As debt forecasts change the amount of fixed cover in place may have to be adjusted to comply with the policy limits.

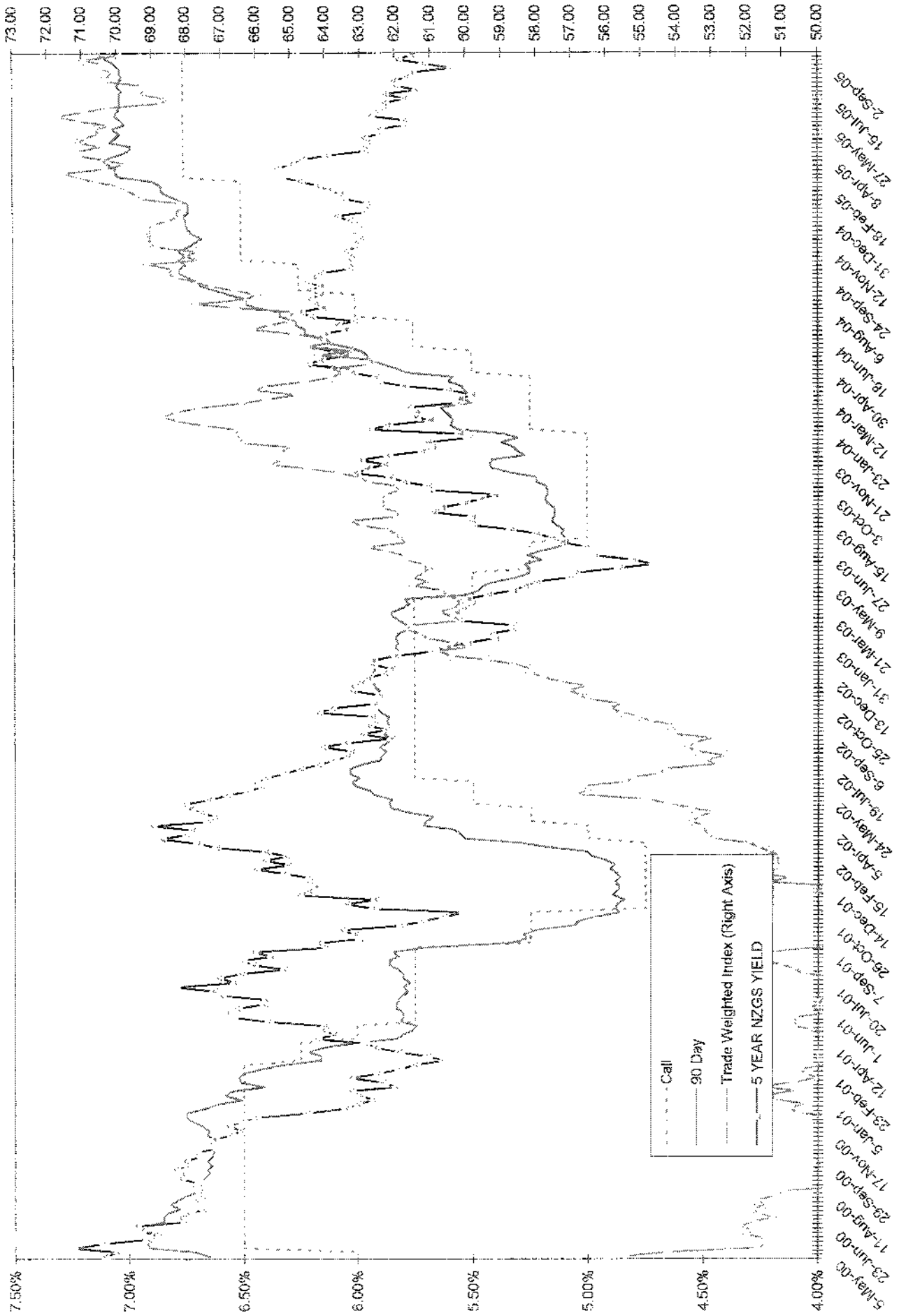
Figure 5

Funding and liquidity risk. Figure 5 varies from figure 4 in that it shows the actual maturity profile of current debt on issue as opposed to the profile of Council's exposure to interest rate risk arising when debt either reprices (in the case of floating rate debt or hedges) or matures. The debt maturity profile enables Council to identify significant concentrations of maturing debt and debt facilities. Where there are significant concentrations of debt maturing Council is at risk of not being able to re-borrow from the market at favourable rates.

Figure 6

In order to ensure Council has the ability to borrow from the market when funding is required committed funding facilities are arranged with approved debt sources. Figure 6 shows Council's committed funding sources and the current usage of these funds. In addition to the committed sources Council also uses uncommitted lines of funding as seen in short term bank loans and bonds, uncommitted funding is at times less expensive than committed funding however its availability is not guaranteed.

Wholesale Market Interest Rates and the Trade Weighted Index



A9

PAYMENTS FOR APPROVAL 5 AUGUST 2005 TO 1 SEPTEMBER 2005

The following payments are reported for the period 5 August to 1 September 2005

a) Wages and Salaries (net of tax)	2,645,225
b) Payments to ARC	49,257
c) Watercare Services Limited	2,034,593
d) Inland Revenue Department	534,056
e) Loan Maturities and Interest	7,661,029
f) Investments	5,094,989

g) Contract payments over \$50,000:

Architectus Auckland	Civic Centre/Library United Contracts	136,883
Asplundh Tree Expert (NZ) Ltd	Tree Maintenance Contract	58,190
Canam Construction Ltd	Civic Centre Contract	2,512,968
Civil Construction Group Ltd	Various Ecowater Contracts	100,682
Coastline Roadmarkers Ltd	Roadmarking Contract	69,183
CSL Traffic Ltd	Street Lighting /Transport Assets Contract	66,379
D J Wood Building Contractor Ltd	Sturges West Community House Contract	98,193
Directions Ltd	Signs Maintenance Contract	79,114
Drake Personnel NZ Limited	Temporary Staff	74,318
Field Drainage Specialists	Various Parks Contracts	102,233
Fletcher Construction Co Ltd	United/Library Contract	2,694,108
Fulton Hogan Auckland Ltd	Paremuka Bridge Contract	177,747
Fulton Hogan North Harbour Ltd	Various Transport Asset Contracts	886,986
Genesis Energy	Power Accounts/Street Lighting	429,227
Haines Recruitment	Advertising	78,539
Hepburn Construction Limited	Works Bond Refund	74,500
Ken Rintoul Contractors Ltd	Bridge Renewal Contract	119,664
M Keoghna Contractors Limited	Stormwater/Titirangi Road/ Godley Road Contract	188,990
Murray & Buckley	Various Ecowater Contracts	146,488
ONYX Group Ltd	Waste Collection Contract	197,548
Parks & Maintenance Services Ltd	Various Contracts	59,728
Pipe Wholesalers 2005 Ltd	Bridge Rail Renewals Contract	56,633
Quotable Value New Zealand Limited	Valuation Services Contract	111,825
Smith & Davies Ltd	Waste Removal	108,366
Synergine Operations Ltd	Various Ecowater Contracts	104,475
Te Ngahere Limited	Waikare Stadium Jetty Contract	58,534
Techscape Limited	Various Contracts	1,342,691
Telecom New Zealand Ltd	Calls & Charges	77,995
Thomas Civil Consultants Ltd	Various Ecowater Contracts	68,560
URS New Zealand Ltd	Various Ecowater Contracts	73,883
Waikare Tag Out Trust	Graffiti Contract	51,437
Walter J Pratt (NZ) Ltd	West Wave Disinfection System Contract	192,329
Waste Management NZ Ltd	Waste Removal	243,767
Watts & Hughes Construction Ltd	New Lynn Library Contract	538,432
		11,379,595

h) Other payments over \$50,000:

Accident Compensation Commission	Levy 2005/2006	382,480
Corban Estate Arts Centre	Building Project Contribution	78,750
Jardine Lloyd Thompson Limited	Insurance Premiums	533,670
Kensington Swan	Legal Fees	106,962
Southern Cross Healthcare	Healthcare Salary Deductions	53,906
Surf Lifesaving Northern Region Inc	Annual Plan Grant	50,825
Waikare Badminton Association	Sport Fund Loan	100,000
		1,306,393

i) Other payments under \$50,000

TOTAL PAYMENTS	35,003,350
----------------	------------

A10

SUPPLIER	AMOUNT	DESCRIPTION
435 West Limited	5,278.50	Parks Bond Refund
Aaenvironmental	18,999.56	Ecowater Contracts
Aaenvironmental	31,845.86	Consultation & Coordination Contract Ecowater
Accident Compensation Corporation	382,480.49	ACC Levy
Advanced Training Limited	7,225.20	Asset Group Performance Contract
Air Conditioning Services New Zealand Ltd	24,328.99	Air Conditioning Paramount Drive Contract
Air New Zealand Limited	12,436.40	Travel
Alex & Rosalie White Family Trust	8,629.05	Rent GPT Building
Alexander McEwan Consulting Ltd	8,010.00	Professional Services Contract
Aiida Robey	10,977.75	Professional Services
Aleasasing New Zealand Limited	14,769.89	Computer Rentals Contract
AMP Asset Management NZ Ltd - Property	16,706.77	Rent New Lynn Library Service Centre
Apex Consultants Ltd	7,225.31	Fruitvale Road Stormwater Contract
Aqualab (NZ) Ltd	11,111.08	Drinking Water Testing Contract
Arborsolutions Ltd	6,898.48	Tree Applications Contract
Architectus Auckland	61,036.24	Civic Centre Contract
Architectus Auckland	75,847.56	Unitec Library Contract
Armitage Systems Ltd	39,092.63	Fibre Cable Joins Extensions
Asplunch Tree Expert (Nz) Ltd	58,190.08	Tree Maintenance Parks Contract
ATL Systems (NZ) Limited	5,663.29	Computer Equipment
ATL Systems (NZ) Limited	16,318.13	Systems Support
Auckland Regional Council	49,257.05	CDEM Financial Member Contributions
AWT Pty Ltd	17,568.11	Various Eco Water Contracts
Bailey & Associates	3,175.94	Project Management Contract
Barnabas Professional Services Ltd	7,594.03	Engineering Services Contract
Boil Gully Buddie Weir (Auckland)	5,625.00	Professional Fees
Bookworks	6,717.73	Books - Libraries
Borders Books Music Video Cafe	5,844.24	Music Videos - Libraries
Boylan Properties Ltd	9,024.05	WCC & ARC Rates
BP Fuelcard	28,618.66	Fuel July 2005
Building Research Association Nz	11,586.65	Levy July 2005
Canam Construction Ltd	2,512,968.35	Civic Centre Contract
Caroline Mcourdie	5,423.90	McLaren Park Community Contract
Cato Bolam Consultants Ltd	9,511.57	Professional Services Contract
Centre For Research Evaluation & Social	10,800.00	Beacon Project Contract
Ch2M Beca Ltd	19,687.50	Professional Services Contract
Civic Contractors Ltd	40,398.60	Loose Litter Collection Contract
Civil Construction Group Ltd	30,592.00	Stormwater Catch Pit Upgrade Contract
Civil Construction Group Ltd	24,187.87	Stormwater Upgrade Netherlands Ave Contract
Civil Construction Group Ltd	45,922.30	Stormwater Wetland Cunard St Contract
Climatech Pacific Limited	6,296.24	Air Conditioning Repairs & Maintenance
Coastline Excavators	25,366.48	Aotea Rd Wastewater Contract
Coastline Roadmarkers Limited	13,808.36	Roadmarking Contract
Coastline Roadmarkers Limited	55,374.20	Roadmarking Contract
Community Asset Management Ltd	25,323.25	Bus Shelter/Guardrail Maintenance Contract
Contract Landscapes Ltd	31,675.75	Holmes Drive Slip Contract
Copy Monitoring Systems (Nz) Ltd	17,077.50	Library Membership Cards
Corban Estate Art Centre	78,750.00	Building Project Contribution
Corporate Consumables Ltd	5,712.66	Printer Cartridges
CSL Traffic Ltd	41,000.64	Transport Assets Contract
CSL Traffic Ltd	25,378.50	Street Light Maintenance Contract
D J Wood Building Contractor Ltd	98,193.27	Sturges West Community House Contract
Datacom Systems Ltd	21,721.38	Computer Charges July 2005
Datacom Systems Ltd	5,005.95	Systems Maintenance Contract/Licence Fees
David Young Consulting	9,468.88	Northern Strategic Growth Contract
Denise Bijoux	5,825.00	Beacon Project Contract
Department Of Building & Housing	7,531.32	Levy July 2005
Department Of Building & Housing	28,441.22	Levy Shortfall April 2005
Detection Services	10,000.00	Performance Bond Refund
DHI Water & Environment	9,579.36	Software Maintenance Agreement
Direct Communications Nz Ltd	7,177.52	Data Cabling
Directions Ltd	68,685.63	Arterial Permanent Warning Signage Contract
Directions Ltd	20,428.14	Signs Maintenance Contract
Drake Personnel NZ Limited	16,592.87	Temporary Staff
Drake Personnel NZ Limited	21,950.08	Temporary Staff
Drake Personnel NZ Limited	15,840.36	Temporary Staff
Drake Personnel NZ Limited	19,934.52	Temporary Staff
Ebsco Nz Ltd	10,964.80	Books-Libraries
Edgocity Builders	14,520.84	HFOA Internal Upgrades
Edgocity Builders	27,260.48	Waikumete Crematorium Contract
Eloise Greta De Biasio	9,248.39	Olympic Park Contract
Emc International Holdings Inc.	11,444.37	Clarion Disc Maintenance Contract
Enviro Waste Services	15,224.63	Kay Road Balfill Contract
Erin Jay Limited	40,098.40	Land Acquisition 4037 Great North Rd
Eurest Nz Ltd	22,060.23	Catering
Fairfax Auckland Group	14,456.76	Advertising
Field Drainage Specialists Ltd	102,233.73	Various Parks Contracts
Fittisemanu Enterprises	0,750.00	Catering Services
Fletcher Construction Co Ltd	2,594,108.41	Unitec Library Contract
Fuji Xerox Finance Limited	23,364.01	Photocopier Leases
Fuji Xerox New Zealand Ltd	7,296.08	Copier Paper
Fuji Xerox New Zealand Ltd	5,081.16	Photocopier Charges
Fulton Hogan Auckland Ltd	177,747.50	Paremuika Bridge Contract
Fulton Hogan North Harbour Ltd	591,188.02	Various Contracts

AN

Fulton Hogan North Harbour Ltd	194,798.80	Various Transport Assets Contracts
G S Shapland Ltd	11,223.95	Lowering Device Cemetery
Gallix Holdings Limited	15,366.65	Rent VTS & COF Lane
Gallix Holdings Limited	9,886.62	ARC Rates
Gaac Computers Nz Ltd	25,787.38	GEMS Software Licence
Genesis Energy	21,713.63	Power Accounts
Genesis Energy	52,146.29	Power Accounts
Genesis Energy	8,121.06	Power Accounts
Genesis Energy	347,246.75	Power Accounts
Gen-i	17,699.09	Contract Service
Glen Eden Community House	19,987.60	Funding
H & H Contractors	7,265.96	Paewa/Witihers Rds Wastewater Contract
Haines Recruitment	78,539.68	Advertising
Harding Electronic Systems Limited	5,619.37	Lighting
Haslam Mediation & Advisory Services	8,634.38	Twin Streams Contract
Hepburn Construction Limited	74,500.00	Works Bond Refund
Hewlett-Packard (Nz) Ltd	11,036.25	Server Warranties
Hirequip Ltd	5,234.22	Excavator Hire
Icon Group	15,269.06	Noise Control Contract
Icon Group	24,666.94	Security Contract
Inland Revenue Department	534,055.76	PAYE
J B Pipeline Services Ltd	43,057.88	Roberts Road Wastewater Contract
Jade Direct Ltd	9,324.07	Payroll Processing
Jardine Lloyd Thompson Limited	497,020.52	Insurance Premiums
Jardine Lloyd Thompson Limited	36,649.13	Insurance Premiums
Jesson Commercial Ltd	11,719.05	Rent 133 Central Park Drive
K & E Planning Ltd	5,282.11	Resource Consents Contracts
Keith Hill Motors Ltd	40,712.78	Vehicle Contracts
Ken Rintoul Contractors Ltd	44,903.90	Bridge Renewals Contract
Ken Rintoul Contractors Ltd	74,760.85	Bridge Renewals Contract
Kennedy Furniture Ltd	34,776.01	Office Furniture
Kensington Swan	73,708.10	Legal Fees
Kensington Swan	21,214.06	Legal Fees
Kensington Swan	12,040.03	Legal Fees
Kensington Swan (Auckland)	15,766.66	Legal Fees
Landcare Research NZ Ltd	21,375.00	Twin Streams Contract
Landcare Research NZ Ltd	13,623.75	LIUDD Pond Contaminant Extraction Contract
Leadership New Zealand	11,250.00	Staff Development
Linesat Design & Print Ltd	23,202.16	Printing & Design
Linesat Design & Print Ltd	16,068.39	Printing & Design
Liquid Waste Disposal Ltd	26,731.39	Onsite Waste Water Management Contract
Local Govt New Zealand	8,829.00	Standards NZ Work in Progress
M Keoghnan Contractors Limited	188,990.21	Stormwater Titirangi Rd / Godley Rd Contract
Magazzino	25,785.04	Magazine Subscriptions
Manukau City Council	20,290.50	Contribution Costs Watercare
Marsa Consultancy Ltd	6,347.72	Various Eco Water Contracts
Marsa Consultancy Ltd	6,706.48	Telemetry System Contract
Massey Community House Society inc	18,046.91	Funding Contract
Matthew Casey Barrister	16,674.87	Legal Fees
Mckenzie Project Services	8,374.55	Quality Control contracts
Meredith Conneli & Co	5,974.65	Legal Services
Metacraft Industries Limited	24,677.64	HFOA Reroof Contract
Mini-Fuels & Oils Ltd	5,649.51	Fuel Reuse Transfer Station
Ministry Of Education	6,750.00	Land Henderson High School
Ministry Of Justice	10,590.00	Share of Infringement Notices
Ministry Of Justice	12,900.00	Share of Infringement Notices
Ministry Of Justice	10,980.00	Share of Infringement Notices
Moore Gallagher	34,290.23	Printing
Moore Gallagher	5,272.63	Printing Rates Explanations
Morrison Low & Associates Ltd	14,124.35	Waste Bylaw Contract
Murray & Buckley	45,704.13	Eco Water Contracts
Murray & Buckley	100,783.66	Various Eco Water Contracts
NZ Institute of Management	6,750.00	Project Management Workshop
National Provident Fund	9,383.02	Superannuation
National Provident Fund	9,873.96	Superannuation
Neighbourhood Support Waitakere City	5,000.00	Grant Payment
Natball Waitakere Inc	8,437.50	Sport Fund Development Grant
New Zealand Post Ltd	19,969.09	Postage
New Zealand Post Ltd	23,830.37	Postage
Norcross Stationery Ltd	11,936.68	Stationery
North Shore City Council	5,525.00	Mixed Use Guides
North West Flooring Ltd	5,078.79	Flooring HFOA Contract
Oberdries Consulting Limited	9,090.00	Cadastral Shift & ARC Info Upgrade
Ota Associates Ltd	17,854.40	Unitec Library Contract
Ocin Consulting Ltd	9,532.24	Contract Work GIS Systems Upgrade
Odyssey 2000 Ltd	6,221.26	Gym Refurbishment
Onyx Group Ltd	197,548.16	Waste Collection Contract
Open Systems Specialists Ltd	7,593.75	Unix Database Outsource Admin Services
Open Systems Specialists Ltd	7,593.75	Unix Database Outsource Admin Services
Opus International Consultants	11,238.75	Cycleway Contract
Opus International Consultants	15,325.00	Coronation Bridge Repairs Contract
Oratia Native Plant Nursery	8,482.78	Twin Streams Ecosourced Plants Contract
Oyster Property Group Ltd	32,652.95	Rent 131 Lincoln Road
Oyster Property Group Ltd	10,488.99	Power June & July
Parks & Maintenance Services Ltd	48,446.41	Parks Works & Renewals Contract
Parks & Maintenance Services Ltd	7,705.25	Parrot Feather Weed removal Paremuka Pond

Parks & Maintenance Services Ltd	5,575.50	Fence Corban Estate
Permapave Nz Ltd	45,261.25	Permapave Stormwater Filtration Contract
Perry Environmental Ltd	19,798.83	Composting Contract
Pictdata Productions Ltd	9,045.00	IM Software
Pipe Wholesalers 2005 Ltd	55,633.33	Bridge Rail Renewals Contract
Plainview Management Ltd	7,969.50	70% Costs Watermain Oates Road
Prescott Homes	5,000.00	Drainage Contribution 25 Cutler Street
Quotable Value NZ Ltd	55,912.50	Valuation & Database Management Fees
Quotable Value NZ Ltd	55,912.50	Valuation & Database Management Fees
R H Jacobsen Ltd	5,592.63	Electrical Contract
Rachael Trotman	7,020.00	PTS Walkway & Cycleway
Rachael Trotman	5,760.00	PTS Walkway & Cycleway
Radioworks Auckland	5,118.75	Aquatic Centre Advertising Contract
Ralph Family Trust	5,092.50	Rent 15a Paramount Drive
Ranui Action Project Inc	30,000.00	Ranui Action Project expenses
Rawlinsons Media Limited	17,437.50	United/Civic Centre Contracts
RDA Promotions Ltd	7,896.60	Promotional Goods
Reed Publishing (NZ) Ltd	5,732.52	Books- Libraries
Resolve Group	11,781.42	Transportation Lifeline Contract
Robert Walters New Zealand Ltd	27,056.25	Professional Services
Rocan Printing Co Ltd	7,319.26	Printing
Simpson Grierson (Auckland)	36,447.44	Legal Fees
Skillssoft New Zealand Ltd	11,025.00	Computer Based Training
Skye Group Pty Ltd	8,718.05	Stock Westwave Shop
Smith & Davies Ltd	108,366.81	Waste Removal
Southern Cross Healthcare	53,906.16	Healthcare Salary Deductions
SPM Consultants Ltd	8,860.42	Development Contributions & Growth Cost Contract
Strategic Lift Ltd	5,625.00	Professional Services
Studio Of Urban Landscape	5,548.19	Professional Services Contract
Sturges West Community House	14,583.33	Funding Contract
Surf Life Saving Northern Region Inc	50,625.00	Annual Plan Grant
Synergine Operations Ltd	104,475.45	Various Eco Water Contracts
Te Atatu Peninsula Community House	16,406.25	Funding Contract
Te Ngahere Limited	58,534.70	Waitakere Sports centre Jetty Contract
Techscape Limited	480,314.25	Various Parks Contracts
Techscape Limited	88,652.47	Various Contracts
Techscape Limited	737,448.75	Various Contracts
Techscape Limited	36,275.63	Service Connections Contract
Telecom New Zealand Ltd	77,995.23	Calls & Charges
The Auckland Gas Company Ltd	11,097.98	Gas Charges Various Sites
The Library Supply Company Limited	8,671.01	Books - Libraries
Thebics Consulting Limited	21,228.75	Professional Services
Thomas Civil Consultants Ltd	68,559.81	Various Eco Water Contracts
Titirangi Community House Committee	19,887.50	Funding Contract
Tony Tay & Associates Limited	7,500.00	Works Bond Refund
Traffic Systems Ltd	8,809.43	Minor Safety Projects Contract
Treescape Ltd	42,377.16	Arboriculture Mice Contract
Tribro Holdings Limited	5,679.46	Refund Development Contributions
Ulrich-Bero Doering	6,000.00	Refund Water Works Bond
Underground Connections Ltd	18,209.38	Various Eco Water Contracts
URS New Zealand Ltd	12,864.14	Hunuhuru Creek Swim Hole Contract
URS New Zealand Ltd	6,841.26	Walk Cycleway Design Contract
URS New Zealand Ltd	41,913.00	Cycle Network Study Contract
URS New Zealand Ltd	12,465.00	Titirangi Stormwater Upgrade Contract
Vector Limited	11,719.11	Relocate Plant West Coast/Glenside Rds
Vodafone	22,635.97	Calls & Charges
Vodafone	5,972.58	Integrated Talkzone Solutions
Voice Perfect NZ Ltd	16,726.50	Speech Recognition Technology
Vos Holdings Ltd	6,018.75	Swim School Contract
Wadecoss	19,226.00	Twin Streams Contract
Waitakere Badminton Association	100,000.00	Sport Fund Loan
Waitakere Corporate Limited	6,552.70	Legal Contract
Waitakere Tag Out Trust	51,437.82	Graffiti Contract
Walter J Pratt (NZ) Ltd	152,329.44	West Wave Disinfection Conversion System Contract
Waste Management NZ Ltd	344,071.74	Waste Removal
Watercare Services Limited	2,034,592.59	Bulk Wastewater July 2005
Watts & Hughes Construction Ltd	535,431.73	New Lynn Library Contract
Wells Instrument & Electrical Services	13,496.66	Water Meter Reading Contract
West Auckland Pacific Island Health Fon	19,710.00	Funding CAYAD Contract
Whitby Trust	7,485.82	Rent Lincoln Manor
Whitcoulls Ltd	30,259.31	Books - Libraries
Wilson Sylvan Ltd	6,486.75	Arboriculture Professional Services Contract
Total Payments as per Above	17,835,652.00	
Other Payments as per Agenda Item	17,168,298.00	
Total Payments as per Agenda Item	35,003,950.00	

AIR

TAHANA

Tahana Limited

Waitakere City Council

Triennial Representation Review

Maori Views regarding; Maori Wards, Voting System, Review of Representation Structure



Waitakere City Council
Te Tūia o Waitakere

September 2005

Table of Contents

1. Executive Summary	3
2. Consultation Process	4
3. Key Findings	5
3.1 Feedback on Specific Issues.....	5
3.2 Underlying Themes.....	7
4. Recommendations.....	8
4.1 Background.....	8
4.2 Final Recommendations	9
5. Appendix	10
5.1 Participant Register Consultation Hui #1	11
5.2 Participant Register Consultation Hui #2.....	12

1. Executive Summary

Tahana Ltd is pleased to present this report on the consultation carried out with the Maori community on behalf of Waitakere City Council.

The purpose of the consultation was to obtain Maori opinion on matters related to the Council's triennial representation review. In particular, consultation focused on the following issues:

- Whether Maori wards should be established
- The preferred system of voting, i.e. either First Past the Post (FPP) or Single Transferable Vote (STV).
- Review of representation, in particular whether seats should be distributed on a ward basis, at large or a mixture of both

Public consultations were held on the 13th and 27th of August 2005 with varying numbers in attendance though generally small. It was noted that participants expressed genuine interest and provided constructive and meaningful responses to the Council's presentation on the issues. A list of participants is attached in the appendix.

The key outcomes of these meetings were:

- The establishment of a Maori ward was supported unanimously.
- There was general support for the STV voting system.
- A mixture of at-large and ward seats was felt to give better overall representation.

2. Consultation Process

Two consultation hui were held on the 13th and 27th of August at Hoani Waititi Marae and the Bible College respectively. The two venues, one a traditional marae and the other a religious/academic institution proved equally suitable with participants freely expressing their views.

The consultation process involved informing participants of the issues at hand (Maori wards, STV vs FPP and representation review), clarifying their understanding of these issues and the related implications, and finally gauging participant's opinions towards those issues.

The informative presentation and clarification of issues was facilitated primarily by Darryl Griffin. This was clear, precise and well received by the audience with free-flowing interchange and questions. Arapeta Tahana augmented Darryl's presentations by reflecting on the experience of Environment Bay of Plenty, which piloted and eventually established Maori seats. Furthermore both Arapeta and Darryl outlined the implications of various alternatives to ensure participants could make an informed opinion on these issues.

Finally direct feedback was sought from participants in order to give definitive answers on the issues. Participants were asked:

- Do you support the establishment of Maori wards?
- Do you prefer the STV or FPP system of voting?
- What representation structure do you prefer? At large, wards or a mixture

3. Key Findings

Our key findings focuses on two distinct areas; opinion towards the key issues and general themes that emerged.

3.1 Feedback on Specific Issues

3.1.1 Do you support the establishment of Maori wards?

There was **unanimous support for Maori wards** from attendees at both consultation hui.

Underlying bases of decision:

- The establishment of a Maori ward must not compromise the existing Taumata.
- While other systems, e.g. STV, might theoretically promise better Maori representation, a Maori ward is the only guarantee of such representation.
- A councillor representing a Maori ward is directly accountable to Maori in an 'electoral sense', and therefore Maori interests are foremost

3.1.2 Do you prefer the STV or FPP system of voting?

There was **general support for the STV voting system**.

Underlying bases of decision:

- The system appears to give minority groups better representation.
- The discussion reflected participant's lack of in-depth understanding of the STV system.
- While STV is thought to improve minority representation it is still to be proven empirically

3.1.3 What representation structure do you prefer? At large, wards or a mixture

There was unanimous support for a mixed structure, i.e. some at large and some wards.

Underlying bases of decision:

- A mixed system would provide members with local knowledge and community interests, whilst at large members would contribute to the well being of the overall city.
- Could potentially vote for a majority of council
- At large representatives provide an opportunity for block voting from the Maori community which is more likely to result in minority group representation as the "minority community" is not divided among the four wards.

3.2 Underlying Themes

The discussion of the specific issues also gave rise to underlying themes which may be significant for council. These themes are outlined below:

- There is a concern that the opinions of the Maori community may have little bearing on the final decision of the Council.
- It was briefly acknowledged that a petition from 5% of the Waitakere City electorate could overturn the Maori community's desire for Maori wards.
- The Maori community are keen to become more involved in local government decision making and are keen to explore, with the Council, strategies for achieving this goal. Some ideas are:
 - Increasing Te Taumata Runanga's representation on the Council Committees and Community Boards.
 - Strengthening Maori lobbying within the Council and the wider Community.
 - Increasing Maori participation in public meetings of issues concerning the Community.
 - Encouraging more Maori to stand for the Council.
 - Strengthening the role of Te Taumata Runanga

4. Recommendations

4.1 Background

The Council and Te Taumata Runanga can be satisfied that these two hui have given a clear indication of Maori opinion on the three issues. They will also be aware of the underlying themes that emerged which centre around; a desire from the Maori community to become more involved in Council decision making processes and a concern that Maori opinions may be ignored. What is encouraging, is that there is a strong reservoir of goodwill towards the Council of which Te Taumata Runanga is an important part. There is therefore the opportunity, for greater Maori participation in Council decision making regardless of any immediate decision.

This raises the question whether Te Taumata Runanga can increase it's influence and voice in decision making processes. There are a number of areas which would need to be looked at including; representation and mandate, training, decision-making, resources etc. From discussions thus far, Te Taumata Runanga appear keen to explore this wider role in the interests of their community. These themes give rise to an opportunity for leadership from the Council and Te Taumata Runanga to advance their relationship in the interests of all stakeholders of Waitakere City.

4.2 Final Recommendations

1. That the Council note the outcomes of consultation with the Maori community of Waitakere City:
 - the establishment of a Maori ward is supported unanimously
 - there is general support for the STV voting system
 - a mixture of at-large and ward seats gives better overall representation
2. That the Council note the concern of the Maori community that Maori opinion may have little bearing on the final decision of the Council.
3. That the Council note that the Maori community are keen to become more involved in local government decision-making through Te Taumata Runanga working alongside the Council.
4. That the Council review the capacity of Te Taumata Runanga to become more involved in Council decision making.
5. That the Council directly informs all participants of the consultation hui regarding the final decision on the three issues.

5. Appendix

5.1. Participant Register Consultation Hui #1, Hoani Waititi Marae 27th August 2005

5.2 Participant Register Consultation Hui #2, Bible College, Lincoln Rd 13th August 2005

5.1 Participant Register Consultation Hui #1

Hoani Waititi Marae 27th August 05

Full Name	Organisation	Address	PH Number	Email	Follow Up Material
Rev'd Judy Cooper	TTR	20 Roick Parade	818 1166		Yes
Te Ngaronoa Pita	HWM Whanau	118 Archibald Road, Kelston	813 3281		Yes
Joe Waru	Whanau	40 Pinedale Place, Henderson		jwaru@slingshot.co.nz	Yes
Meremere Pita	Whanau	118 Archibald Road, Kelston	813 3281		Yes
Poata Northcroft	TTR	27 Rewa Rewa Rd, Te Atatu Peninsula	834 7869		
Rebecca Hoana Harper	Whanau	62 Ulrich Drive, Ranui	832 8180		Yes
Merana Rangihina	MWWL Te Atatu	4/121 Bruce McClaren Rd, Henderson	837 8457		Yes
Peihaere Patina	MWWL Te Atatu	10 Styca Place, Henderson	813 6367		Yes
Fraser Delamere	Hoani Waititi Marae	Pairs Cross Road	818 2323		Yes
Nicholas Manukau	Manukau Whanau	65 Parker Avenue, New Lynn	827 1878	nicholas.manukau@fish.govt.nz	Yes
Kahu Brown	Ngawha Rocks	4 Hill Cres, New Lynn	021293		Yes
Annie Tau	Ngawha Rocks	4 Hill Cres, New Lynn	2592		
Meg McCallum	Waipore Trust	3/466 West Coast Road	027302		
Whakaoranga Peita	Waipareira	30 Chisehurst, Bruce McLaren	9066		Yes
			818 2833		
			838 1607		

224

5.2 Participant Register Consultation Hui #2

Bible College, 13th August 05

First Name	Surname	Address 1	Address 2	City	Phone No	Email	Would like to be kept informed
Mihi	Te Hulia	123 Taikata Road	Te Atatu Peninsula	Waikare City		mihitehulia@hotmail.com	
Awa	Hudson	66 Royal Road	Massey	Waikare City	833 8434		
Crystal	Walding	66 Royal Road	Massey	Waikare City	833 8434		
Pio Wiremu	Jacobs	3 Larnoch Road	Henderson	Waikare City	836 6066		
					838 8989		
TeRangi	Allen	57 Awaroa Road	Henderson	Waikare City	835 3626		yes
Lee	Vazey	1/84 Urlich Drive	Ranui	Waikare City	021 1530404		
Heslain	Wagner	28 Brennan Avenue	Te Atatu Peninsula	Waikare City	834 5954		yes
Christine	Jacobs	3 Larnoch Road	Henderson	Waikare City	836 6066		yes
Kelvin	Martin	90 Waimumu Road	Massey	Waikare City	832 6118	kelvin.martin@xtra.co.nz	yes
Fraser	Delamere	Hoani Waititi Marae	Glen Eden	Waikare City	818 2323		yes
Poala	Northcroft	2/7 Rewa Rewa Road	Te Atatu Peninsula	Waikare City	834 7869		yes
Linda	Paki	16 Longview Road	Massey	Waikare City	833 5803		yes
Kuinnie	Sow-Man	7/32 Wairau Avenue	Avondale	Auckland City	828 2025		yes
Stephanie	Harawira	4 Skybird Place	Glen Eden	Waikare City	818 4491		yes
Taiawa	Harawira	4 Skybird Place	Glen Eden	Waikare City	818 4491	newwavemarketing@xtra.co.nz	yes
Charles	Joe	25 Burnleigh Terrace 60 Granville Drive	West Harbour Massey	Waikare City			yes

225

**MINUTES OF AN EXTRAORDINARY MEETING OF THE TENDERS SUBCOMMITTEE
HELD IN THE CIVIC CENTRE, 6 WAIPAREIRA AVENUE, LINCOLN,
WAITAKERE CITY, ON WEDNESDAY, 14 SEPTEMBER 2005,
COMMENCING AT 9.00 AM**

PRESENT: Councillor RI Clow (Deputy Chairperson)
Director: Corporate & Civic Services
Director: Strategy & Development
Director: Quality Assurance
Director: Finance
Maori Issues Manager

IN ATTENDANCE: Principal Advisor Urban Development
Committee Administrator: S Cunningham

1 APOLOGIES

1712/2005

MOVED by W Paki, seconded R McLeod:

That an apologies from Cr Clews, H O'Rourke, J Dragicevich for absence, be received and sustained.

CARRIED

2 URGENT BUSINESS

There was no Urgent Business.

**3 CONTRACT NO. SD04009 - HENDERSON CENTRAL BUSINESS DISTRICT
STREETSCAPE UPGRADE - REGISTRATION OF INTEREST - EVALUATION**

1713/2005

MOVED by A Magee, seconded A Pollock:

That the Contract No. SD04009 Henderson Central Business District Streetscape Upgrade - Registration of Interest - Evaluation report be received.

CARRIED

1714/2005

MOVED by A Magee, seconded Cr Clow:

1. That the four (4) following registrants be invited to tender for construction works for the Henderson Central Business District Streetscape Upgrade project:
 - HEB Contractors Limited;
 - Dempsey and Wood Civil Contractors Limited;
 - Fulton Hogan Limited;
 - P & M Paving and Construction Limited.
2. That the Director: Quality Assurance be delegated authority to identify up to a further three suitably qualified companies that may be interested in tendering for the Henderson Central Business District Streetscape Upgrade project.
3. That a further report be brought back to the Tenders Subcommittee on the result of the tender.

CARRIED

9.02 am

The Chairperson thanked members for their attendance and attention to business and declared the meeting closed.

CONFIRMED AT A MEETING OF THE TENDERS
SUBCOMMITTEE HELD ON

DATE:.....

CHAIRPERSON:.....