



WAITAKERE

Waitakere Regional Sports Trust Recovery Plan

30 July 2004

Current Situation

Sport Waitakere is facing numerous issues associated with its core business.

These have been identified by:

- SPARC
- Waitakere City Council
- Informal feedback from other stakeholders
- Polson Higgs report dated 24/09/2003
- Mix Marketing report dated 14/01/2004

Challenge

The challenge for Sport Waitakere is to remedy its current position to enable it to:

- Function as a well-operating Sports Trust
- Provide vision and focus for sport, recreation and well-being in Waitakere City
- Leverage off the opportunities that the Trusts Stadium will create

Purpose of the Recovery Plan

This Recovery Plan sets out the measures that Sport Waitakere is committed to in order to remedy its current position. This is imperative to retain and attract further funding.

All measures shall be referenced to milestones contained within this Plan.

This Recovery Plan covers the period from July 2004 to 31 July 2005.

The Issues

- Governance
- Communication
- Staff & Customer Service
- Systems
- Programmes
- Vision

Governance

Issue	Goal	Action	KPI	Timeline
Trust Structure	Review the structure of the Trust with a view to separating the Sport Waitakere and stadium businesses	Present matter to Board of Trustees for immediate consideration	Decision by 2 August 2004	August 2004
Succession Planning	Reassessing term of trustees identifying critical skills of trustees	Review Deed of Trust to ensure rotation of trustees	Rotational system in place	June 2005

Governance cont...

Issue	Goal	Action	KPI	Timeline
Leadership	Improve the governance and leadership of the Board Identify skills of the Board	Receive mentoring from Harbour Sport for six months	Review the Board and Chairman after six months	February 2005
CEO / Chairman Relationship	Improve the level of communication between the CEO and Chair	Improved governance	Review of relationship	Starting immediately, with review in November 2004

Communication

Issue	Goal	Action	KPI	Timeframe
With SPARC	Restored faith in Sport Waitakere by SPARC	Implementing Recovery Plan	Renewed contract	June 2005
With Waitakere City Council	Strengthened working partnership with Waitakere City Council	Regular face to face meetings and commitment to open and honest communication	More joint projects and ventures Reports delivered on time in a standard format	June 2005
With other stakeholders	Higher participation	Regular updates on activities	Monthly call cycles and Stakeholders' Forums	December 2004

Communication cont...

Issue	Goal	Action	KPI	Timeframe
Media Relations	<p>Improve branding of Sport Waitakere</p> <p>Improve public image</p>	<p>Improve relationships with all forms of media within Waitakere City</p> <p>Report all success and improvements to media</p> <p>Appoint media liaison person</p>	<p>Extensive coverage and branding of Sport Waitakere activities</p> <p>Review with stakeholders and sponsors</p>	November 2004

Communication cont...

Issue	Goal	Action	KPI	Timeframe
Website	Develop an interactive and informative website focussed on Sport Waitakere	Undertake a review of websites operated by other community-based organisations	Website operational Implement recommendations in Stakeholders Survey	Basic operation by October 2004 Full operation by March 2005

Staff & Customer Service

Issue	Goal	Action	KPI	Timeframe
Capability	Upskill and develop industry knowledge	Training and mentoring	360° review of staff, by RST Alliance and key stakeholders	December 2004
Training	Successful, safe and compliant delivery of programmes and events	Implement training and education programmes	Development of template for review of each event	September 2004

Staff & Customer Service cont...

Issue	Goal	Action	KPI	Timeframe
Assessment	Six monthly assessment by 360° review of CEO and all staff	Prepare framework for each and provide education for staff	Both systems in place and operating successfully	Systems in place by September 2004 Reviews completed June 2005
Staff Retention	Improve morale and make Sport Waitakere a pleasant working environment	Improve Sport Waitakere's image to attract skilled applicants Staff / Board and Staff team building	Reduced staff turnover	Continuous assessment

Staff & Customer Service cont...

Issue	Goal	Action	KPI	Timeframe
Customer Services	<p>Improved customer service</p> <p>Professional image for Sport Waitakere</p>	<p>Design questionnaire to identify stakeholders' interests in relation to customer services</p> <p>Establish standards for training and mentoring</p>	Positive feedback in stakeholders surveys	December 2004

Systems

Issue	Goal	Action	KPI	Timeframe
Recruitment Policy	Ensure procedures for hiring of staff are in place	Finalise draft policy	Policy in place, communicated and adhered to	September 2004
Finance Policy	Ensure financial compliance through guidelines	Finalise policy	Policy in place, communicated and adhered to	September 2004
Accounts	Have transparency of financial reporting	Complete migration to new software	Clear, accurate assessment presented to Board and made available to key stakeholders	August 2004

Programmes

Issue	Goal	Action	KPI	Timeframe
All programmes	Achieve and develop successful programmes within Waitakere City	<p>Conduct an audit to identify the resources required to effectively deliver the programmes.</p> <p>Develop a resourcing plan to enable this to occur</p>	Delivery of successful programmes	June 2005

Programmes cont...

Issue	Goal	Action	KPI	Timeframe
Sportfit	Sport Waitakere to assist secondary schools to provide high quality experience and sport education for students	Work with sports co-ordinators to provide quality training and advice	Nine schools certified "sportsmark"	December 2004
Swim for Life	Upskill school teachers in their swim coaching ability	Work with local swim club coaches	Teachers to be competent to teach students to swim	On-going contract ends July 2005

Programmes cont...

Issue	Goal	Action	KPI	Timeframe
Streetsport	To get youth active and participating from a community perspective	Running Streetsports after-school programmes in schools and community centres	25 children per programme with increasing participation showing	On-going contract ends July 2005
He Oranga Poutama	Maori to be active through sport	Work with Waitakere City Council, the Maori community and SPARC to re-instate programme	Re-instatement of programme	September 2004

Programmes cont...

Issue	Goal	Action	KPI	Timeframe
Halberg	<p>Increase awareness of physical activity issues</p> <p>Work with events to plan policies and programmes to include disabled people</p> <p>Work with schools, clubs and community to ensure those with disability are involved in sport</p>	<p>To consult with people with disabilities</p> <p>To work with Waitakere City Council, RSOs, NSOs, schools and event managers to plan for all people</p> <p>Upskill to provide physical recreation for the disabled</p>	<p>Increase number of events catering for the disabled</p>	<p>On-going contract ends July 2005</p>

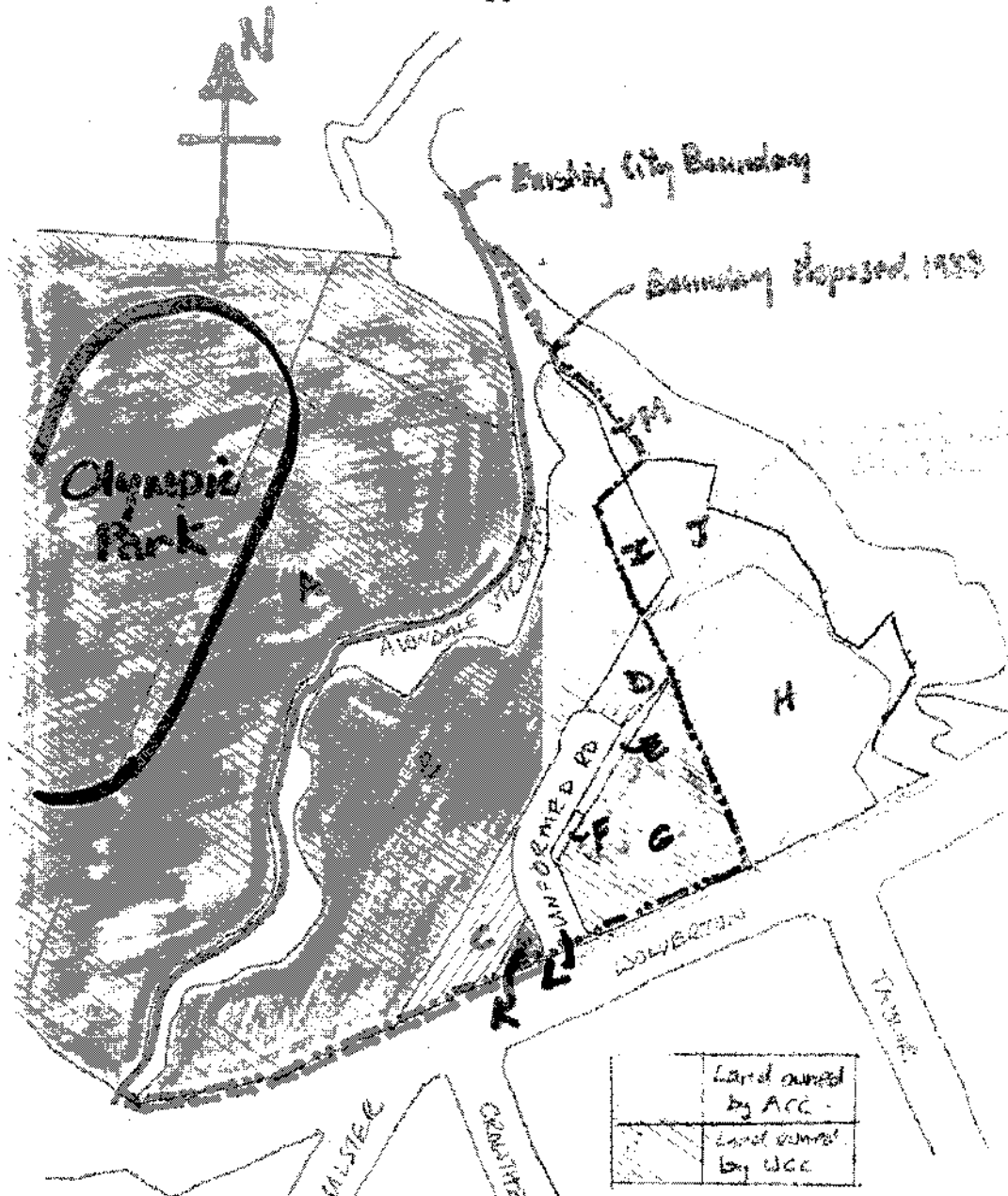
Programmes cont...

Issue	Goal	Action	KPI	Timeframe
Coach Development	Start Coach NZ level courses	Bring in Sam Panapa to deliver Coach NZ courses, from September 2004	Completion of six courses	On-going contract ends July 2005
Sportsmart	Injury free sporting experience	Delivery to schools and clubs emphasize the 10 point plan in training	4 sportsmart presentations 120 students attend PE class forms 45 min's on Sportsmart	July 2005

Vision

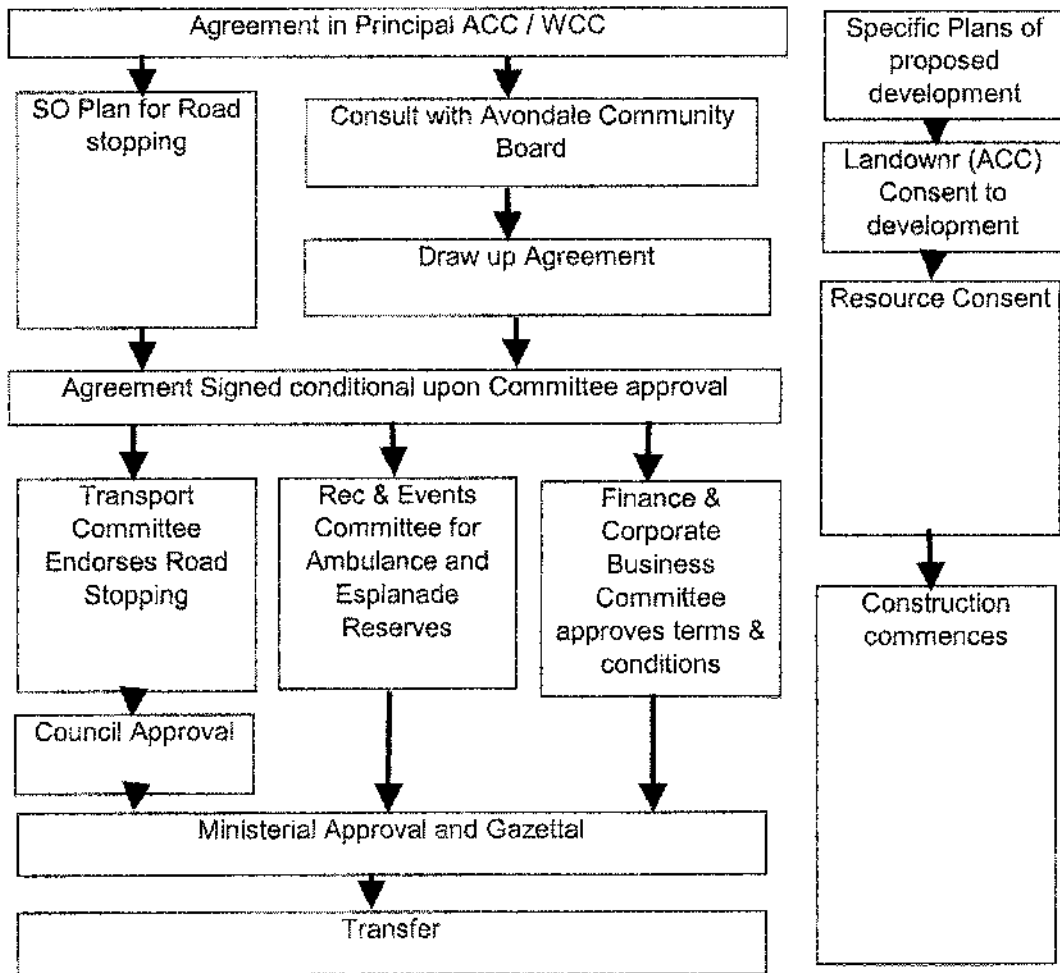
Issue	Goal	Action	KPI	Timeframe
Strategic Plan	Advance from Recovery Plan to Strategic Plan	Consult external parties (such as NSOs, RSOs and key stakeholders) to a greater level of consultation and involvement	Board approval of Strategic Plan 2005/06	March 2005

Appendix A



Area	Legal Description	M ² ACC
A	Olympic Park	
B	Pt Allot 88 Sec 2 Whau Township Also on same CT is K and G below.	
C	Allot 84 Section 2 Town of Whau Nth. Held fee simple.	1,102
D	Allot 81 Section 2 Town of Whau Nth. Held fee simple.	579
E	Allot 82 Section 2 Town of Whau Nth. Held fee simple.	240
F	Allot 83 Section 2 Town of Whau Nth. Held fee simple	85
G	Allot 87 Sec 2 Whau North Township See also B and K.	
H	Lot 1 DP157353 Local Purpose (Works Depot) Reserve.	5,727
I	Section 1 SO63678 (Part of Area B)	
J	Lot 2 DP157353 Local Purpose (Esplanade) Reserve.	2,724
K	Allot 88 Sec 2 Whau Township. See also B & G above.	
L	Unformed Legal Road	2,400
M	Section 2 SO63678 (Part of Area J)	
	Total	12,857

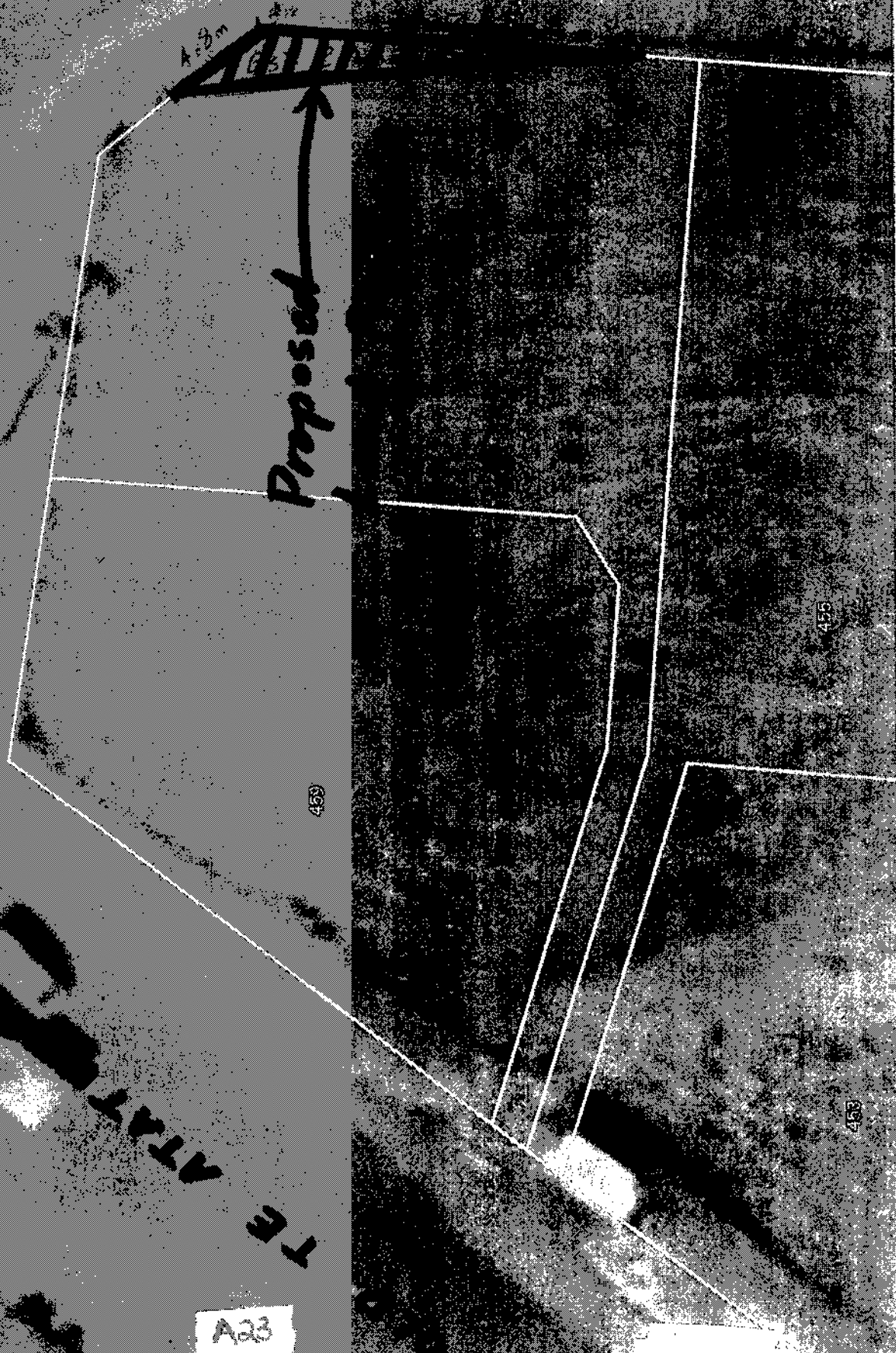
Woiverton Properties - Programme



1:250.

TE ATATU ROAD

**457 OLD TE ATATU ROAD
EXTENT OF LAND PURCHASE**



A23

Waitakere City Council
 Financial Summary (Interim Report)
 June 2004

Exec Summary.xls, Exec Summary
 1/1, 26/08/2004

100.00% of Financial Year

Executive Summary	Actual to Date	%age Spent	Annual Budget
Operating Costs			
Executive Suite	1,782,373	104.6%	1,704,041
Public Affairs	2,434,066	109.9%	2,215,158
Finance	1,428,402	108.7%	1,313,975
Corporate & Civic	15,056,644	101.2%	14,876,246
Strategy & Development	7,907,863	89.4%	8,848,569
City Services			
Regulatory	3,012,469	52.4%	5,746,430
Asset Management	40,118,714	90.3%	44,432,515
Planning & Community Services	15,441,441	109.0%	14,164,240
Service Management	4,642,326	102.5%	4,528,228
Project Services	2,369,562	83.2%	2,846,348
Total City Services	65,584,512	91.4%	71,717,761
Total Unit Operating Costs	94,193,860	93.6%	100,675,750
Capital Expenditure			
Executive Suite	0	0.0%	10,000
Public Affairs	24,079	51.1%	47,100
Corporate & Civic	5,422,953	78.3%	6,921,753
Strategic Projects	6,723,602	0	50,256,070
City Services			
Regulatory	622,113	93.2%	667,500
Asset Management	31,281,672	60.9%	51,327,697
Planning & Community Services	704,743	22.3%	3,166,652
Service Management	56,579	62.9%	90,000
Project Services	2,180,708	75.2%	2,900,150
Total City Services	34,845,815	59.9%	58,151,999
Total Capital Expenditure	47,016,449	40.7%	115,386,922

**WAITAKERE CITY COUNCIL ESTIMATED DEBT PORTFOLIO AT
30 July 2004**

	TERM DEBT (to fund long term assets)	(\$'000's)
<i>Budget year end term debt position per 2004/2005 Annual Plan</i>	Approved Annual Plan term debt	239,468
	Further term debt approved by Council during 2004/2005	-
	Budget 2004/2005 year end gross term debt	239,468
	Less funds introduced from Development Contributions	10,822
	Less Current and funding for strategic land acquisitions	38,381
	Forecast year end Sinking Fund Commissioner funds	3,809
	Anticipated 2004/2005 Year End Net Term Debt	186,456

	30 July 2004 Estimated (\$'000's)	30 June 2004 Estimated (\$'000's)	
TERM DEBT PORTFOLIO			
<i>Term debt position at 30 July 2004</i>	Term debt borrowed externally	102,756	100,681
	Special funds (used to reduce Council's external borrowing)	-	-
	Gross term debt	102,756	100,681
	Total Sinking Fund Commissioner assets	4,798	5,062
	Net term debt	97,958	95,619

<i>Term debt - source of funds at 30 July 2004</i>	Debenture stock - fixed rate (security: Debenture Trust Deed)	57,681	58,681
	Debenture stock - floating rate (security: Debenture Trust Deed)	27,000	27,000
	Secured bank loans (security: Debenture Trust Deed)	15,000	15,000
	Unsecured bank loans	3,075	0
	Finance Leases (security: associated asset)	0	0
	External borrowing	102,756	100,681
	Special funds (used to reduce Council's external borrowing)	0	0
	Gross term debt requirement	102,756	100,681

	(\$'000's)	(\$'000's)	
WORKING CAPITAL			
<i>Working capital borrowing at 30 July 2004</i>	Unsecured bank loans / (investments)	12,325	1,550
	Special funds (used to reduce Council's external borrowing)	11,817	11,817
	UNL Share Fund	-	-
	Council working capital borrowing requirement	24,141	13,367

	(\$'000's)	(\$'000's)	
CASH INVESTMENTS			
<i>Cash investments held 30 July 2004</i>	UNL Share Fund	-	-
	Other Cash Investments	-	-
	ARST fund (excluding fund allocations)	1,221	1,215
	Total cash investments	1,221	1,215
	ARST invested for 49 days - Current investment interest rate	6.20%	5.96%

Debt Forecast

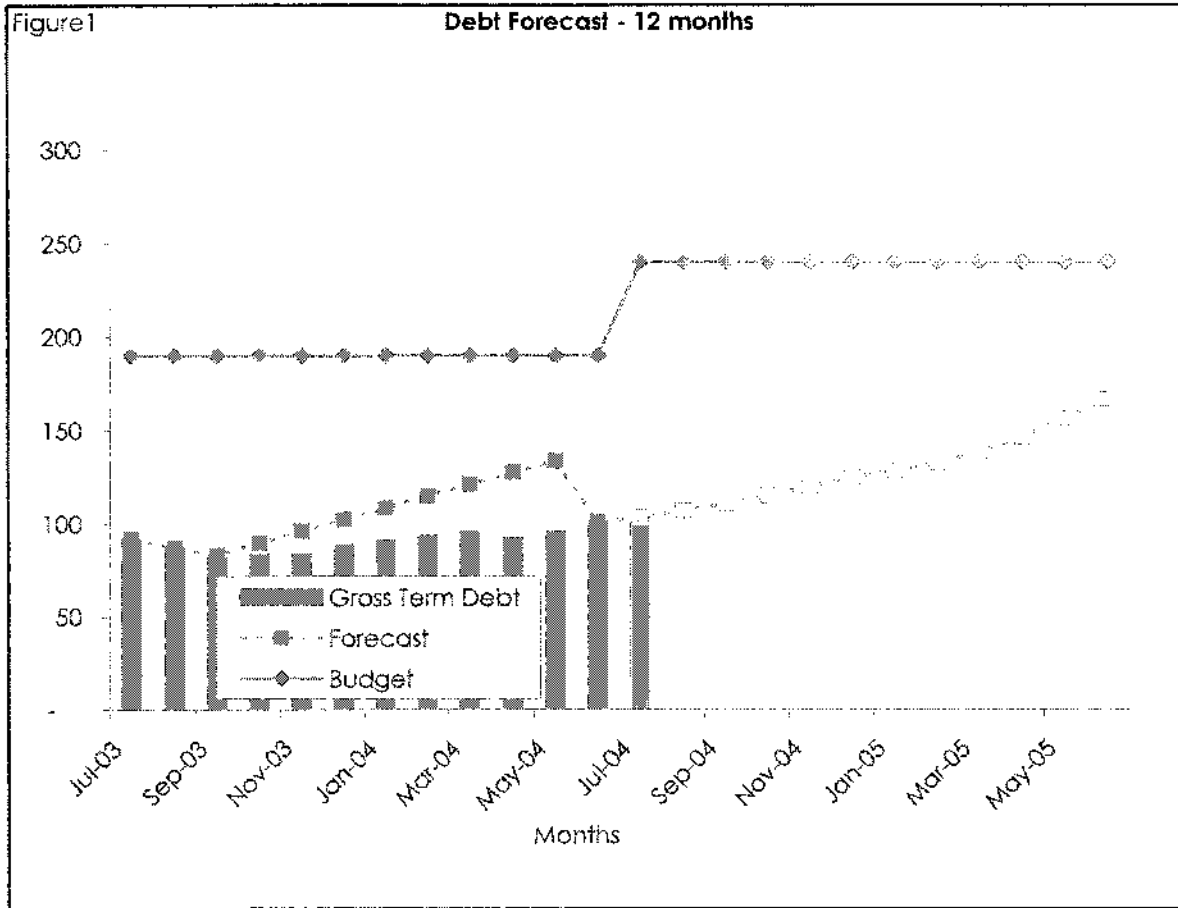
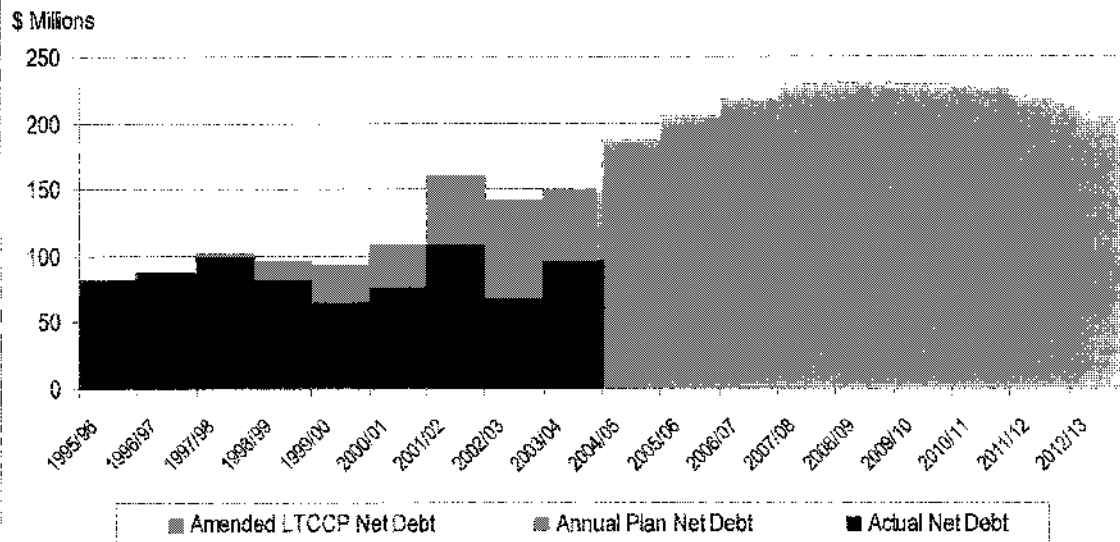
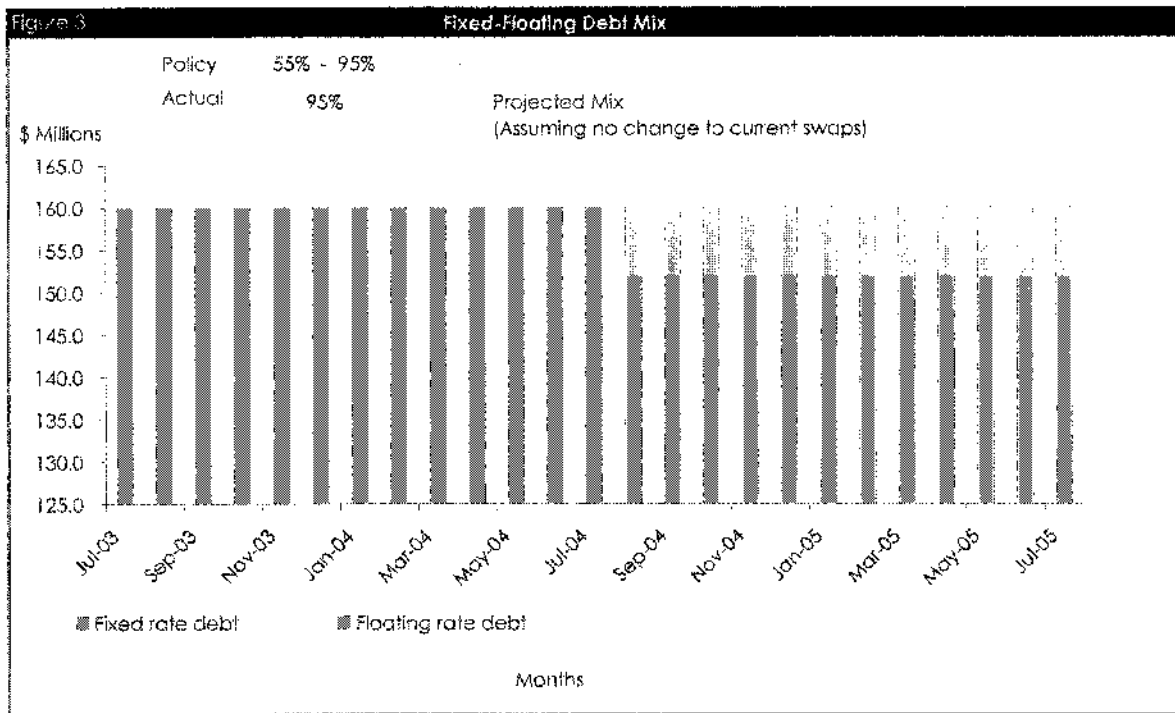


Figure 2

Historic and Future Net Debt Position



Fixed-Floating Debt Mix



Net Interest Rate Repricing Risk Profile

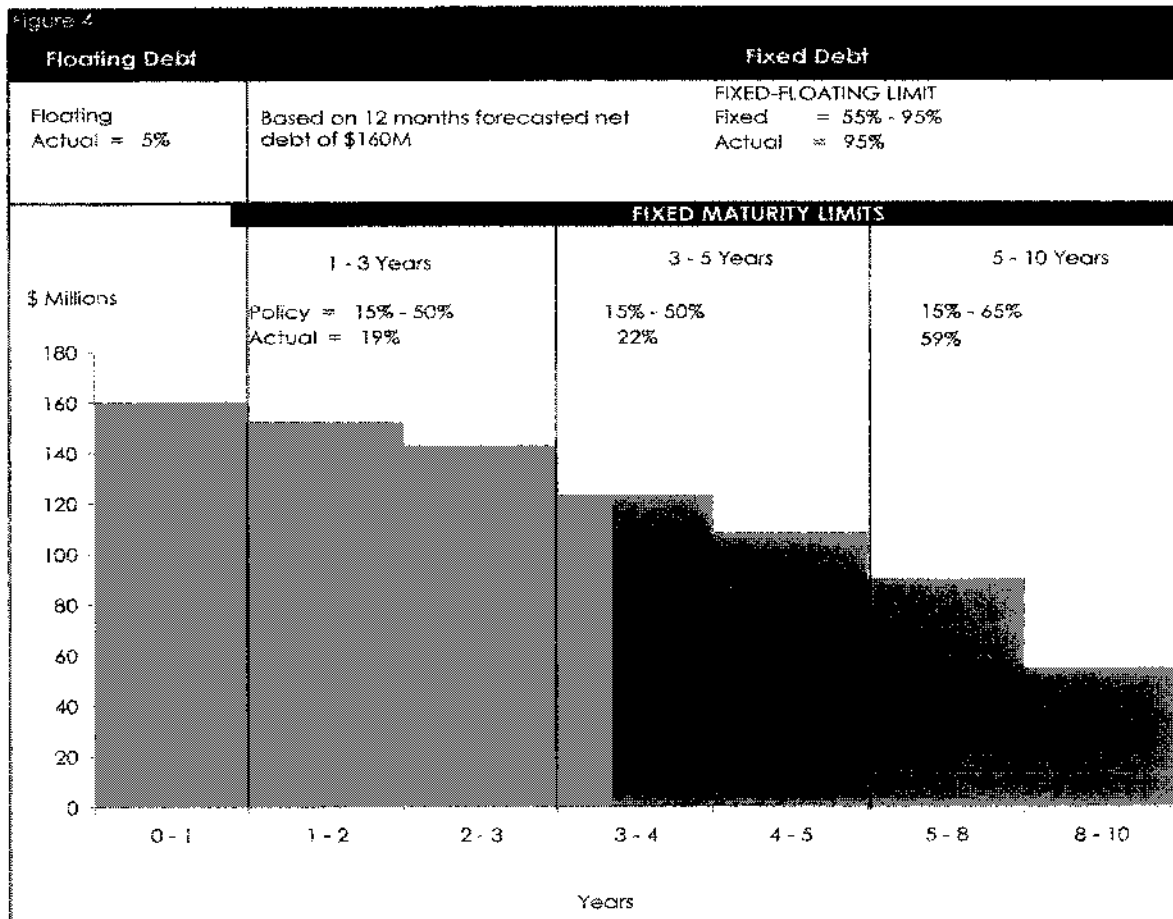
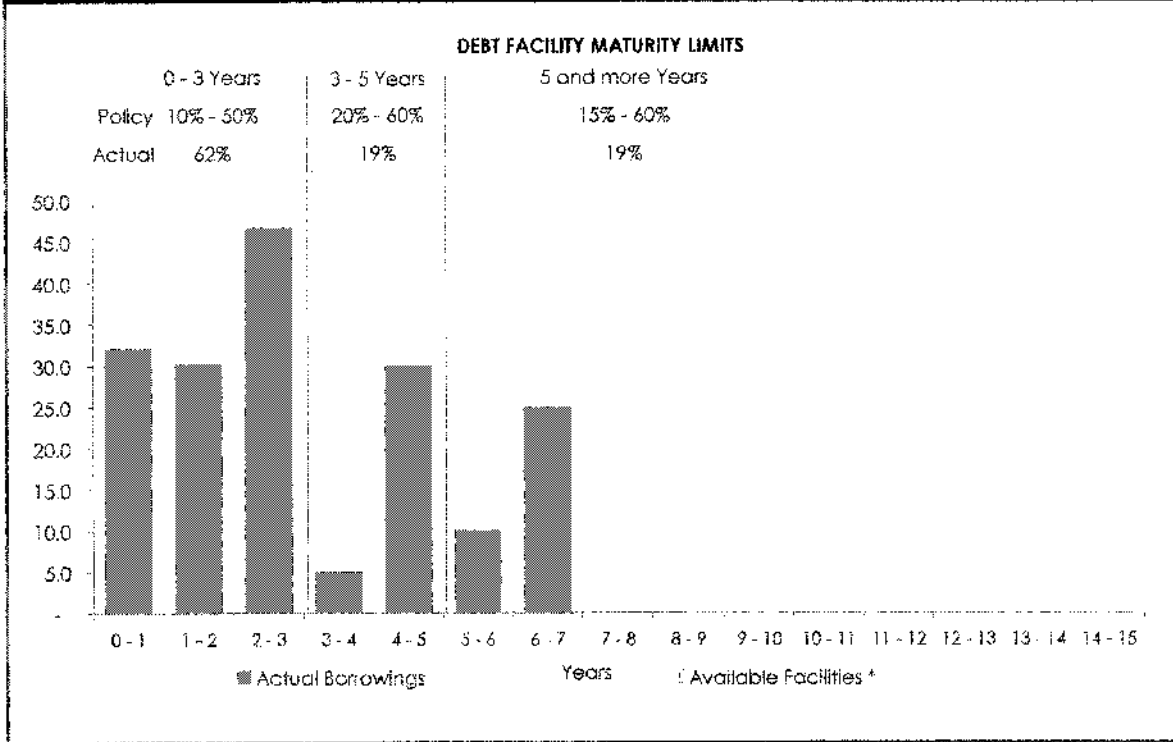


Figure 5

Funding Risk: Debt Maturity Profile



Summary of Debt Sources

Figure 6 \$ Millions

Council Approved Debt Sources	Total		
	Committed Funding Sources	Usage	Available
Bank Loans			
Short Term (uncommitted)	\$0.0	\$0.0	\$0.0
Long Term (committed)	\$100.0	\$15.0	\$85.0
Commercial Paper			
Bank Overdraft	\$1.0	\$0.0	\$1.0
Senior Bonds			
Retail	\$13.6	\$13.6	\$0.0
Wholesale	\$71.1	\$71.1	\$0.0
Other	\$0.0	\$0.0	\$0.0
TOTAL	\$185.7	\$99.7	\$86.0

The Liability Management and Investment Policy gives guideline parameters for the mix of fixed/floating interest rate management and maturity profiling. From time to time the actual position may marginally be outside the recommended guideline as a result of volatility of market interest rates or the Councils actual cash position.

Notes:

Working capital borrowing is necessary due to fluctuations in the timing of operating revenue and expenditure. The working capital borrowing requirement also includes internal deficits relating to prior years. External working capital borrowing is reduced by the use of internal special funds with any surplus requirement funded by way of unsecured bank loans.

Gross Term debt is the borrowing relating to long term loan funded capital works projects. External borrowing to fund term debt is reduced by the use of internal special funds with the surplus requirement funded by way of secured or unsecured short term bank loans, fixed or floating medium or long term bonds and finance leases.

The managed debt portfolio refers to the portion of Council's total debt portfolio that is managed to reduce interest rate risk, liquidity/funding risk, counterparty risk and operational and legal risk as defined in the Liability Management and Investment Policy. The portfolio is managed on the external net term debt requirement excluding finance leases. I.e. It is net of the special funds that have been used to reduce the external term debt requirement and the sinking fund balance. Working capital is not included in the managed debt portfolio.

Special Funds are cash funds either collected through rates or vested to Council that have been 'set aside' for specific future spending. The funds are used in the interim to reduce Council's requirement to borrow externally. The fund is managed via accounting entries and a monthly interest allocation is made to the funds based on the Council's weighted average cost of borrowing for that period.

Description of Graphs:

Figure 1

Gross term debt (blue) is the actual gross term debt position of Council as defined in the notes above. The Forecast (orange) is the projected gross term debt level per month in the current financial year, the figures are obtained from capital works timing forecasts (provided by budget managers on a monthly basis) and the current debt maturity profile. The Budget (green) line represents the gross public debt as approved in the 2004/2005 Annual Plan.

Figure 2

The prior year net term debt figures (dark blue section) are obtained directly from the published Annual Reports . The Annual Plan net term debt figures (light blue section) are obtained from that years published Annual Plan. The orange section is the Long Term Council Community Plan (amended) net term debt as published for 2003/2004 - 2012/2013.

Figure 3

The fixed (blue) and floating (orange) interest rate mix, both historic and projected, based on the 12 month rolling forecast net debt requirement. The Liability Management and Investment Policy minimum is 55% fixed and maximum 95% fixed. The positioning of the portfolio between policy minimum and policy maximum is dependent on the current and forecast financial market outlook.

Figure 4

Interest rate risk profile. Figure 4 shows, given the current fixed/floating rate mix and the debt forecast (assuming no changes to current swaps), the percentage of current fixed rate debt that will mature in future years. This enables Council to recognise and reduce significant concentrations of interest rate risk that may arise in future years. As debt forecasts change the amount of fixed cover in place may have to be adjusted to comply with the policy limits.

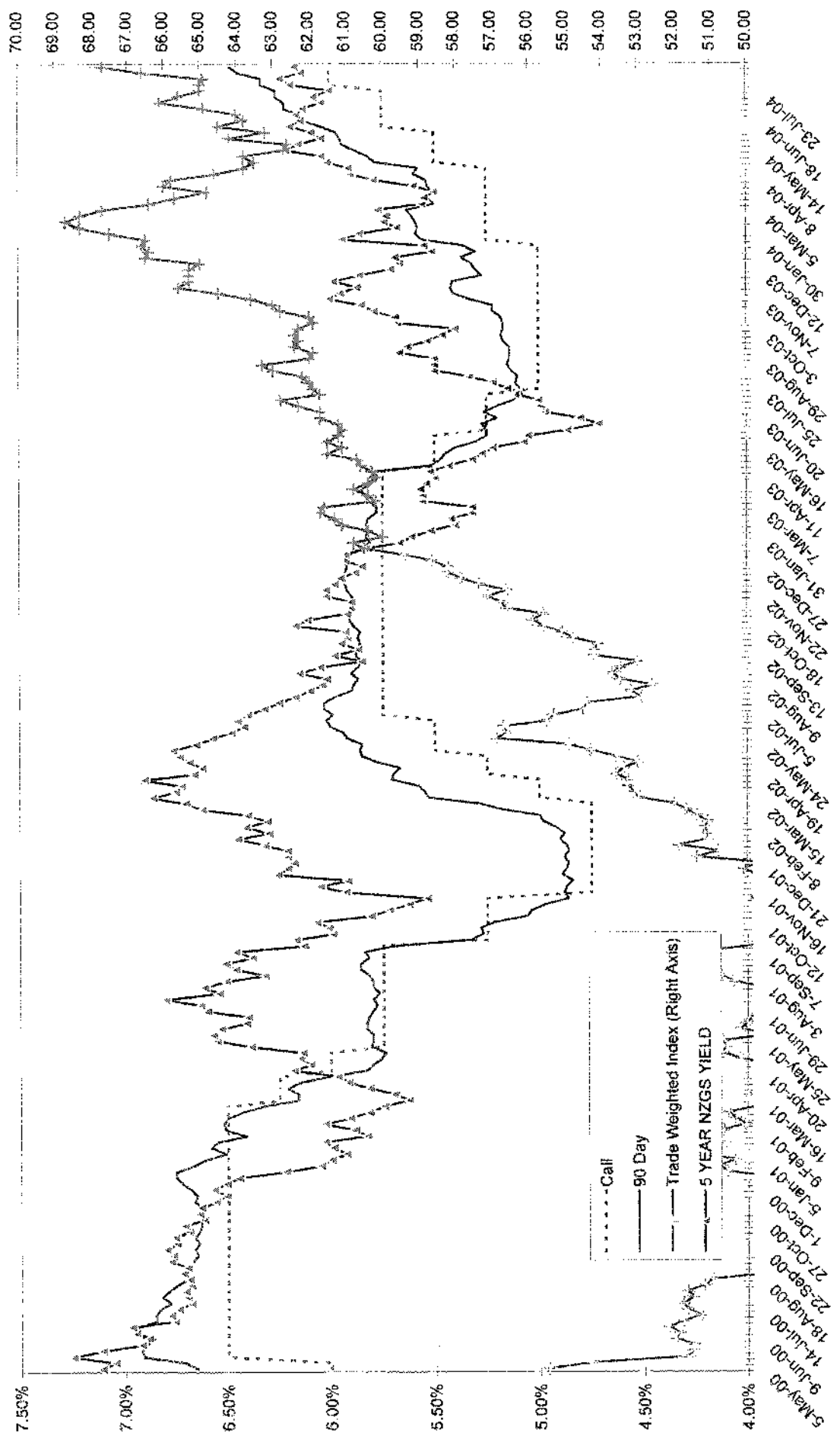
Figure 5

Funding and liquidity risk. Figure 5 varies from figure 4 in that it shows the actual maturity profile of current debt on issue as opposed to the profile of Council's exposure to interest rate risk arising when debt either reprices (in the case of floating rate debt or hedges) or matures. The debt maturity profile enables Council to identify significant concentrations of maturing debt and debt facilities. Where there are significant concentrations of debt maturing Council is at risk of not being able to re-borrow from the market at favourable rates.

Figure 6

In order to ensure Council has the ability to borrow from the market when funding is required committed funding facilities are arranged with approved debt sources. Figure 6 shows Council's committed funding sources and the current usage of these funds. In addition to the committed sources Council also uses uncommitted lines of funding as seen in short term bank loans and bonds, uncommitted funding is at times less expensive than committed funding however its availability is not guaranteed.

Wholesale Market Interest Rates and the Trade Weighted Index



PAYMENTS FOR APPROVAL 16 JULY 2004 TO 13 AUGUST 2004

The following payments are reported for the period 16 July 2004 to 13 August 2004

a) Wages and Salaries (net of tax)		2,370,211
b) Payments to ARC		7,875
c) Watercare Services Limited		5,288
d) Inland Revenue Department		937,089
e) Loans - repayment of maturities/interest		10,989,569
f) Investments		6,015,657
g) Contract payments over \$50,000:		
Architectus Auckland	Waikare Central Design Contract	566,269
Asplundth Tree Maintenance	Tree Maintenance Parks	64,403
Asset Construction Ltd	Various Contracts	78,777
ATL Systems (NZ) Ltd	Computerware & Licenses	370,212
Auckland Civil Ltd	Waikumete Cemetery Road Upgrade Contract	58,225
Certus	Informix Database Maintenance Contract	91,492
Civil Construction Group Ltd	Various Contracts	168,260
Drake Personnel NZ Limited	Professional Services	57,682
Edgcity Builders	Various Contracts	51,481
Field Drainage Specialists Ltd	Various Parks Contracts	97,572
Fulton Hogan North Harbour Ltd	Massey Ward Footpath Contracts	106,977
Genesis Energy	Power & Street Lighting	115,696
Gen-1	Professional Services	97,572
H & H Contractors	Roberts Rd/Pacific Winery Wastewater Contract	80,328
Hawkins Construction Limited	Glen Eden Library Contract	1,435,589
Itcblue Limited	Computer Software & Installation	52,778
M Keogh Contractors Limited	Various Contracts	229,562
Parks & Maintenance Services Ltd	Various Contracts	225,022
Quotable Value New Zealand Ltd	Valuation Contract Services	55,913
Smith & Davies Ltd	Waste Removal	56,717
Te Ngahere Limited	Harbourview / Orangihina Pathway & Siteworks	53,965
Techscape Limited	Various Contracts	1,347,392
Telecom New Zealand	Calls & Charges	657,704
Waste Management NZ Ltd	Waste Removal	384,925
Wayne S Milne Ltd	Glen Eden Public Toilet Upgrade	86,427
		6,590,940
h) Other payments over \$50,000:		
Department For Courts	Share Infringement Notices	50,850
Kensington Swan	Legal Fees	102,325
NZ Mutual Liability Riskpool	Combined Liability Contribution 2004/2005	209,756
Sport Waitakere	Contribution Operating Costs Trusts Stadium	140,625
		503,556
i) Other payments under \$50,000		2,924,435
TOTAL PAYMENTS		30,344,620

SUPPLIER	AMOUNT	DESCRIPTION
4055 Centre Limited	48,682.91	Road Widening 4041-4055 Great North Rd Contract
Alex & Rosalie White Family Trust	6,328.13	Rent - GPT Building
All Shine Cleaners	8,152.56	Cleaning Civic Centre
Amp Asset Management NZ Ltd - Property	16,550.76	Rent - New Lynn Library/CAB Service Centre
Architectus Auckland	566,268.75	Waitakere Central Design Contract
Armourguard Security Ltd	10,032.47	Noise Control Contract
Armourguard Security Ltd	5,036.10	Security Contract
Armstrong-Churchill & Associates Ltd	5,003.03	EMF Audit & Investigation 131 Lincoln Rd
Arthur D Riley & Co Ltd	7,609.22	Water Meter Contract
Asplundh Tree Expert (NZ) Ltd	64,402.79	Tree Maintenance Parks Contract
Asset Construction Ltd	13,935.04	Stormwater Upgrade Margan Ave Contract
Asset Construction Ltd	5,816.67	Mudgeways Rd Culvert Contract
Asset Construction Ltd	59,025.54	Waimarie Stormwater Contract
Aspen Developments Limited	10,000.00	Crossing Bond Refund
ATL Systems (NZ) Limited	262,309.10	Microsoft Enterprise Agreement Contract
ATL Systems (NZ) Limited	107,903.39	Computerware
Auckland Civil Ltd	47,852.49	Waikumete Cemetery Rd Upgrade Contract
Auckland Civil Ltd	10,372.05	Waikumete Cemetery Rd Upgrade Contract
Auckland Regional Council	7,875.00	ARC Business Publication/Urban Case Studies
Baker & Taylor International Ltd	5,394.02	Library Books
Batley Developments Limited	9,335.50	Works Bond & Street Damage Refunds
Bill Korver	5,000.00	Re 235 Laingholm Dr - Watsl
Boffa Miskell Ltd	20,739.75	Native Freshwater Fish Survey Contract
BP Fuelcard	23,400.20	Fuel
Brave Design Ltd	5,062.50	PTS Bridge Signs
Bristow & Partners	5,455.25	Valuation 280 Bethells Rd
Building Industry Authority	28,054.36	Levy August 2004
Building Research Association NZ	43,206.71	Levy August 2004
Cab Electrical	5,324.46	Repairs To Pump
Casella Consulting	12,240.00	Professional Services
Certus	91,492.13	Informix Database Maintenance Contract
Ch2M Beca Ltd	15,075.00	WCC Westwave Chlorine Conversion Contract
Chamonix Holdings Limited	5,501.25	Rent - Glen Eden Library
Chamonix Holdings Limited	5,501.25	Rent - Glen Eden Library
Civic Contractors/Onyx Group P/Ship	10,737.01	City Cleaning & Roadsweeping Contract
Civil Construction Group Ltd	102,509.65	Stormwater Wetlands Pooks Rd Contract
Civil Construction Group Ltd	65,750.14	Ulrich/Giengarry Stormwater
Cleaning Plus Ltd	15,310.44	Cleaning Contract
Community Asset Management Ltd	40,113.55	Bus Shelter & Guard Rail Maintenance
Contact Energy Ltd	27,160.25	Gas Accounts
Creative Spaces Ltd	35,364.38	Aquatic Centre Upgrade Contract
Creative Spaces Ltd	6,682.50	Aquatic Centre Upgrade
CSL Traffic Ltd	9,284.38	Streetlight Maintenance Contract
Dainty Alderton & Associates	19,154.25	Ecowater Contracts
Daniel Overton & Goulding	30,000.00	Deposit - 317 HSN Valley Rd - M J Gilich
Data Interface Technologies Ltd	13,500.00	K2V.I Software Lease
De Beer Marketing And Communications	6,750.00	New Lynn Brand Development Stage 1 Contract
Deloitte	17,437.50	Hobsonville Marine Entity Operations Contact
Department For Courts	13,500.00	Infringement Notices
Department For Courts	13,080.00	infringement Notices
Department For Courts	10,770.00	infringement Notices
Department For Courts	13,500.00	Infringement Notices
Directions Ltd	14,529.77	Signs Maintenance Contract
Drake Personnel NZ Limited	17,449.71	Temporary Staff
Drake Personnel NZ Limited	11,066.63	Temporary Staff
Drake Personnel NZ Limited	8,065.00	Temporary Staff
Drake Personnel NZ Limited	21,100.57	Temporary Staff
Drill Tech 1996 Ltd	6,700.00	Tender Deposits Refunds
Dunedin City Council	24,959.26	Quality Of Life Project Levy
Edgecity Builders	28,655.36	Various Building & Repair Maintenance Contracts
Edgecity Builders	22,825.14	Various Parks Contract
Eland Limited	24,750.00	AIM Programme July 2004
Electionz.Com Limited	11,250.00	Agreement 2004 Local Government Elections
Employment Relations Service	15,588.85	Remuneration Authority Levies
Envirologic	13,556.25	Ecological Monitoring Contract
Environmental Defence Society	10,000.00	Sponsorship Coastal Landscape Conference
Envirotech Maintenance Ltd	5,950.13	Ground Maintenance Contract
Enviro-Ventures & Associates Ltd	8,100.00	Pressure State Response Monitor Twin Streams Contract
Eurest NZ Ltd	11,432.36	Catering
Excell Corp	21,232.28	Great North/Henderson Valley Rd Stormwater Contract
Excell Corp	9,100.00	Tender Deposits Refunds
Exotic Developments Limited	17,625.00	Cancelled Building Consents
Fitisemanu Enterprises	5,625.00	Going West Catering

Forward Learning NZ Ltd	7,533.00	Gold On Line Library
Friends Of The Whau Inc	7,397.76	Operational Environmental Education
Fuji Xerox Finance Limited	18,403.88	Photocopier Leases
Fuji Xerox New Zealand Ltd	28,392.06	Photocopier Contract
Fulton Hogan North Harbour Ltd	106,977.11	Massey Ward Footpaths Contract
G N & J D Johansen Ltd	8,437.50	Summerland Drive Community Centre Contract
G N & J D Johansen Ltd	8,437.50	Summerland Drive Community Centre Contract
Gailax Holdings Limited	14,531.25	Rent - VTS & COF Lanes
Genesis Energy	9,294.16	Power Accounts
Genesis Energy	10,192.46	Power Accounts
Genesis Energy	96,209.86	Power/Street Lighting
Gen-I	97,572.49	Consultancy
Glen Eden Community House	19,687.50	Funding Contract
Green Bay Community House	12,866.66	Funding
Greenwood Associates Landscape Architec	20,587.50	Paremuiku Arts Project
Griffiths Consulting Ltd	11,659.50	Legal Fees
H & H Contractors	80,326.21	Roberts Rd/Pacific Winery Wastewater Contract
Harrison Grierson Consultants Ltd	27,000.00	Ecowater Contracts
Harrison Grierson Consultants Ltd	5,447.85	Professional Services Contract - Consents
Hawkins Construction Limited	956,831.57	Glen Eden Library Contract
Hawkins Construction Limited	478,757.74	Glen Eden Library Contract
HEB Contractors	12,967.44	Sports Complex Hard Landscaping Contract
Icon Group	22,555.88	Security Contract
Icon Group	15,299.66	Noise Control Contract
Images Post Ltd	16,875.00	Guardians Of Mauri Video Contract
Inland Revenue Department	451,751.36	PAYE
Inland Revenue Department	71,962.99	FBT June Quarter
Inland Revenue Department	413,374.39	PAYE
Isthmus Group	5,302.01	Te Atatu Walkway Contract
Itcblue Limited	26,389.13	Contract IM0320H
Itcblue Limited	26,389.13	Software & Installation
Jade Direct Ltd	6,236.26	Payroll Processing June
Jardine Lloyd Thompson Limited	528,453.91	Insurances
Jesson Commercial Ltd	11,250.00	Rent - 133 Central Park Drive
John W Cargill Plumbing Ltd	5,446.04	Plumbing Contract
Joyce Group Auckland Ltd	5,793.75	De-Commission Fire System 2 Henderson Valley Rd
Kaon Technologies Ltd	7,593.75	Interest Fees July/August 2004
Kensington Swan	5,803.69	Legal Fees
Kensington Swan	89,005.07	Legal Fees
Kensington Swan (Auckland)	7,516.66	Salary B McDonald
La4 Landscape Architects Ltd	5,699.87	Lipsham/Parker Rd Contract
Lineset Design & Print Ltd	22,961.15	Waikare City News/Well Being Report
Liquid Waste Disposal Ltd	44,266.25	Onsite Wastewater Management Contract
M Keoghans Contractors Limited	90,385.88	Miscellaneous Drainage Contract
M Keoghans Contractors Limited	76,229.14	Bush/Rangiwhai/Victory Kerbs Drainage Contract
M Keoghans Contractors Limited	62,946.98	Laingholm Dr Kerb & Footpath Contract
Magness Sound Ltd	18,074.07	New Lynn Community Centre Sound System Contract
Mansell Contractors	7,445.43	Huia/Whatipu Drainage Contract
Manukau City Council	7,004.69	Shared Services
March Cato Ltd	42,418.69	Sunnyvale Stormwater Upgrade Contract
Massey Community House Society Inc	18,069.41	Funding Contract
Matthew Casey Barrister	8,977.50	Legal Fees
Maunseil Limited	9,812.81	Paremuiku Dam Surveillance Contract
Maunseil Limited	14,911.88	Paremuiku Dam Surveillance Contract
Mckenzie Project Services	8,692.90	Outsource Quality Control Contract
Murray & Buckley	8,095.95	Carter Rd Watermain Renewals Contract
NZ Mutual Liability Riskpool	209,756.25	Combined Liability Contribution 2004/2005
New Zealand Kennel Club	11,250.00	Sponsorship National Dog Show
New Zealand Post Ltd	25,425.18	Postage
North City Landscapers Ltd	6,250.05	Rapian Lagoon Way Reserve Contract
North Shore City Council	10,055.61	Contribution Permeable Pavement Spec
North Western Toyota	36,796.00	Motor Vehicle Contract
Nzblue Ltd	12,349.44	Aquatic Centre Internal Management Contract
Octa Associates Ltd	12,658.25	Henderson Library/Unitec Project Management Contract
Open Systems Specialists Ltd	8,718.75	Database Outsourced Administration Services
Oratia Native Plant Nursery	5,520.15	Eco Sourced Plants Lower Oratia Contract
Oyster Property Group Ltd	5,087.02	Electricity Moselle Ave
Pacific Rim Institute Of Sustainable Ma	14,310.00	Twin Streams Project 1 Contract
Parks & Maintenance Services Ltd	219,067.04	Various Parks Contract
Parks & Maintenance Services Ltd	5,955.14	Planting 21 Riversdale Rd/Landscape Herald Island
Paul Evans	5,962.50	Consultant Aquatic Centre Contract
Perry Motors Ltd	37,297.00	Motor Vehicle Contract
Pipeline & Civil Ltd	24,221.43	Triangle/Lowtherhurst Wastewater Upgrade Contract
Playco Equipment Ltd	22,992.02	Playground Upgrades Physical Works Contract
Playworks Construction Ltd	36,712.29	Playground Upgrades Siteworks Contract

Prime Group Ltd	30,543.26	4041 - 4055 Great North Rd Widening Contract
Property Plus Property Services	8,859.36	Kaumataua Court Renovation Contract
Property Plus Property Services	7,062.19	Kaumataua Court Renovations Contract
Quotable Value NZ Ltd	55,912.50	Valuation Services & Database
R H Jacobsen Ltd	6,489.70	Electrical Contract
Raeco New Zealand Limited	27,661.65	Digital Projectors/Book Return & 2 Carts
Railway Enthusiasts Society (Inc)	13,739.00	Train Hire Going West
Ranui Action Project Inc	30,000.00	Ranui Action Project Funds
Ranui Community Centre Inc	17,500.00	Funding
Rawlinsons Limited	11,250.00	Waitakere Central/ Henderson Library/Unitec Contracts
Rawlinsons Limited	21,375.00	Waitakere Central/ Henderson Library/Unitec Contracts
Regional Realty Ltd	32,652.65	Rent - 131 Lincoln Rd
Rentworks Limited	7,572.38	Buyout Leased Equipment 11 Base Units
Resource Management Solutions Ltd	5,227.38	Professional Services Contract - Consents
Ronworth Trusts Partnerships	7,500.00	Refund Works Bond
Russell Mcveagh & Mckenzie Bartlett & Co	7,962.84	Professional Services
Simon Terry Associates	19,954.69	Analysis 3 Water Contracts
Simpson Grierson (Auckland)	12,648.94	Legal Fees
Simpson Grierson (Auckland)	10,608.44	Legal Fees
Sinclair Knight Merz	22,578.75	New Lynn Parking Study Contract
Smith & Davies Ltd	75,310.67	Waste Removal
Smith & Davies Ltd	56,717.19	Waste Removal
Sport Waitakere	140,625.00	Contribution Operating Costs Trusts Stadium
Studio Of Urban Landscape	17,994.74	New Lynn Town Centre Development/Ranui Station Landscape Contracts
Synchro Consulting	6,525.00	New Lynn Parking Study Contract
Synergine Operations Ltd	28,938.42	Urban Sustainability Code Of Practices Contract
Te Atatu Peninsula Community House	16,406.25	Funding Contract
Te Kawerau A Maki Trust	19,023.25	Professional Services
Te Ngahere Limited	47,552.34	Harbourview/Orangihina Pathway & Site Works Contract
Te Ngahere Limited	6,412.50	Harbourview/Orangihina Pathway & Site Works Contract
Techscape Limited	749,999.43	Various Contracts
Techscape Limited	290,816.14	Various Contracts
Techscape Limited	306,576.59	Water/Wastewater/Stormwater Contract
Telecom New Zealand Ltd	65,703.65	Calls & Charges
Terry Moorhouse	7,146.56	Dangerous Goods Contract
The Weedfree Waitakere Trust	39,068.60	Environmental Weeds Contract
The Wireless Warehouse	44,839.69	Radio Telephones
Thomas Civil Consultants Ltd	40,876.88	Outsource Subdivision Engineering & Building Consent Contract
Titirangi Community House Committee	19,687.50	Funding Contract
Topaz Consulting Services	9,094.50	Call Centre Consulting
Traffic Systems Ltd	12,727.83	Pedestrian Crossing Points Construction Contract
Uniform Brokers Ltd	7,672.40	Uniforms Fitness Centre Aquatic Centre
URS New Zealand Ltd	5,427.00	CMP General Works Contract
URS New Zealand Ltd	14,505.41	Kelston BHS Partnership Advice Contract
URS New Zealand Ltd	6,104.36	WCC Fleet Audit
Waitakere City Brass Inc	9,000.00	Parades Performances 2003/2004
Waitakere City Council	15,623.09	Water Accounts
Waitakere City Council	11,463.95	Water Accounts
Waitakere Tag Out Trust	43,519.58	Graffiti Contract
Waste Management NZ Ltd	384,925.46	Waste Removal
Watercare Services Limited	5,267.50	Trade Waste Fees
Waugh Consultants Ltd	23,976.57	Ecowater & Parks Contract
Wayne S Milne Ltd	86,427.00	Glen Eden Public Toilet Upgrade Contract
Wells Instrument & Electrical Services	11,345.83	Water Meter Reading Contract
Whitby Trust	7,070.77	Rent - Lincoln Manor
Works Infrastructure Ltd	6,100.00	Tender Deposits Refunds
Zealous Design	16,576.31	Harbourview Arts Bridge Installation Contract
Total Payments as Above	10,232,258.68	
Other Agenda Item Payments	20,112,361.32	
Total Payments as per Agenda Item	30,344,620.00	