

A61

13. References

- Alexander, Edward P, 1989, *Museums in Motion*. American Association for State and Local History, Nashville.
- Cobley, Joanna, 2007, Podcasting: revealing museum treasures through storytelling. *Insite magazine*, Sep-Oct 2007 (Museums Australia (Victoria)). www.mavic.asn.au
- Coster, John & Jane Legget, 2006, Museum Services in Waitakere City ~ a Preliminary Investigation into Options and Issues for Cultural Heritage Collections Relating to Waitakere City. Waitakere City Council / HERITAGE WORKS:41.
<http://www.waitakere.govt.nz/AbtCnl/ct/pdf/artsevents2006/111006art1-25.pdf>
- Creative New Zealand, 2003. *Getting On Board: a governance resource guide for arts organisations*. Wellington.
<http://www.creativenz.govt.nz/files/resources/getting-on-board.pdf> (PDF 193kb)
- International Council of Museums (ICOM) *Code of Ethics for Museums*, 2006.
- Jowett, S., 2007. Corban Estate Update. Report to City Development Committee, 2 August 2007. Waitakere City Council. <http://www.waitakere.govt.nz/AbtCnl/ct/pdf/cityvlpmt2007/020807ag.pdf>
- Kerr, Ruth, 2007. "One City – Many Voices". Waitakere City/Medial Associates Ltd.
- Museum of New Zealand Te Papa Tongarewa National Services Te Paerangi, 2005. Governance Structures. *He Rauemi Resource Guides No.22*. 16 pp. Te Papa, Wellington.
<http://www.tepapa.govt.nz/NR/rdonlyres/6F89551E-1877-46AD-AAAF-A7140717F8C1/0/BiculturalGovernance.pdf>
- Museums Aotearoa, 2003, Code of Ethics for Governing Bodies of Museums and Museum Staff
<http://www.museums-aotearoa.org.nz/Site/publications/publications.aspx#ethics>
- Museums Aotearoa, 2005, *A Strategy for the Museum Sector in New Zealand*. <http://www.museums-aotearoa.org.nz/Site/publications/publications.aspx>
- NZ Statutes. Auckland War Memorial Museum Act 1996.
- Perry, J., 2005. Valuation/Report July 2005 Waitakere City Council Ceramic Heritage Collection. Waitakere City Council.
- Rouette, Georgia, 2007, On line exhibitions: why bother?. *Insite magazine*, Sep-Oct 2007 (Museums Australia (Victoria)). www.mavic.asn.au
- Rouette, Georgia, 2007. *Exhibitions: a practical guide for small museums and galleries*. Museums Australia (Victoria), Melbourne.
- Scadden, K. & D. Holman, 2004, Waitakere City Heritage Strategy Action Plan
<http://www.waitakere.govt.nz/abtcnl/pp/pdf/hrtsstratactplan.pdf>
- Scadden, K. & G. Ferguson , 2004, Draft Waitakere City Heritage Strategy, Waitakere City Council.
- Scott, Dick, 1979. *Fire On The Clay The Pakeba Comes To West Auckland*. Auckland, Southern Cross Books.

UrbanismPlus Ltd., Pete Bossley Architects Ltd., Janet Hannan Consultancy, Visitor Solutions Ltd. & MPM Projects Ltd., September 2007. *Corban Creative Quarter Waitakere City Council & Unitec New Zealand*. Report to Waitakere City Council and Unitec New Zealand, 62 pp.

Waitakere Arts and Cultural Development Trust Charitable Trust Deed 15 September 1999.

Waitakere Arts & Cultural Development Trust Board Minutes 21 August 2007.

Waitakere City Council, 2006. Minutes of a Meeting of the Culture, Arts & Events Special Committee, held at Waitakere Central, 6 Henderson Valley Road, Henderson, Waitakere, on Wednesday, 11 October 2006. <http://www.waitakere.govt.nz/AbtCnl/ct/pdf/artsevents2006/111006min.pdf>

Waitakere City Council, July 2007. Arts Infrastructure in Waitakere City. Discussion paper.

Wilson, Lauren, 2007. Escape from the glass case. *The Australian* newspaper, Sydney, November 20, 2007. www.theaustralian.news.com.au/story/0,25197,22786475-16947,00.html

Web pages (accessed July-October 2007):

http://www.ccac.org.nz/exhibitions/past_exhibitions/exhibitions_2002.aspx

<http://www.churchroad.co.nz/2/tourism/museum.html>

<http://icom.museum/definition.html>

<http://www.lopdell.org.nz/events/>

<http://www.stuff.co.nz/print/4092613a6523.html>

<http://www.waitakere.govt.nz/ArtCul/index.asp>

<http://www.waitakere.govt.nz/cnlser/fn/heritage.asp>

APPENDIX 1

WAITAKERE HISTORY PROJECT

Ruth Kerr

18 Pages

A64

APPENDIX 1**ONE CITY MANY VOICES***One City – Many Voices***Waitakere City/West Auckland
History Project****An overview**

'This is an exciting project that has enormous potential to both link the citizens of Waitakere City to its past and inspire them towards its future. It is a unique history, rich with endeavour, fortitude, creativity and vision. It is a story that needs to be told because - we cannot know where we are going unless we know where we have come from.'



Prepared by:

Ruth Kerr - Medial Associates Ltd, in consultation,
under contract to
Waitakere City Council, October 2007

A65

| | |
|---|---|
| Project | History of Waitakere City/West Auckland |
| Working title | <i>One City - Many Voices</i> |
| Major funder | Waitakere City Council |
| Publisher | Random House |
| Publication date | March 2009 |
| Purpose of this document | Provide John Coster (Waitakere City Museum Project) with an overview and content map of the history project. |
| Emailed to John Coster October 8, 2007 | By Ruth Kerr Managing Editor Medial Associates Ltd Ph: (09) 817 9943 027 310 2204 medial@ihug.co.nz |

Contents

| | |
|----------------------------|----|
| Contents..... | 5 |
| Introduction | 6 |
| Background to Project..... | 8 |
| The Road Ahead | 9 |
| Management Structure..... | 10 |
| Draft Content Map..... | 11 |

Introduction

I was approached by Waitakere City Council's Director of Public Affairs Wally Thomas in late 2004 to develop a process to produce a comprehensive history of West Auckland to commemorate the 21st anniversary of the founding of the city in 2009.

Some 25 years experience as a journalist, researcher and biographer made me well placed to first create a *Waitakere City/West Auckland Local History & Cultural Resources Register*, capturing existing written and recorded resources and identifying gaps in research and writing. Then a *Brief* was created, in consultation, defining the content (see Draft Content Map – pg 9) of the history and presented to publishing partner Random House in February 2006, to establish costings for the project.

Finlay Macdonald was approached in August 2006 to act as General Editor and expressed interest in the project, pending funding support.

A budget, management structure and timeline were developed and the proposal for *One City, Many Voices – The History of Waitakere City* [working title] was presented to WCC's Culture, Arts and Events Special Committee in December 2006. The project was unanimously endorsed and \$124,000 (over three years) was budgeted towards the history, which has a total budget of approximately \$300,000.

The Going West Trust is the funding arm for the project and a draft budget and funding schedule have been created. ASB has granted \$35,000 towards the project and an application has been made to NZ Lottery Grants Board (Environment and Heritage). The Trusts [Portage and Waitakere] have indicated funding support (for writers' fees) and I am now canvassing other funders to commit to funding this important regional history project.

One City, Many Voices – The History of Waitakere City will be an accessible history that is both rigorous and readable. It will outline the geology/geography of the area and trace the early settlement by Waitakere City tangata whenua, Te Kawerau a Maki, and later, Ngati Whatua. In the 1830s came the European timber millers and Austro Hungarian [Dalmatian] gum diggers, who went on to establish orchards and viticulture in the West. The history will salute the clay workers who formed the backbone of the brick and pottery industries from the 1850s, and detail how the completion of the rail track linking the West to the bustling centre of Newmarket in 1880, opened its commercial horizons. It will cover the building of the first dam in the early 1900s, which strengthened not only Waitakere's [then Waitemata's] infrastructure, but that of Auckland City as well, and the history will also document the importance of the West Coast and Manukau Harbour, and the individualistic coastal communities nestled therein. *One City – Many Voices* will look at the environmental significance of the Waitakere Ranges and their contribution to 'green' politics in the City and nationwide, and at some of the innovative commercial endeavors, such as the film and boat building industries.

West Auckland's cultural diversity flourished from the mid 1900s when Dutch immigrants arrived, rural Maori migrated in their thousands to urban centres and Pacific Island peoples came to work in Auckland factories. These migrations impacted hugely on the City and this contemporary history will track the rich cultural impulses these peoples brought to the West. *One City – Many Voices* will tell the significant urban Maori story that dates from the 1970s

and gave rise to inspirational initiatives such as the Waipareira Trust, Hoani Waititi Marae and the country's first Maori standing committee – Te Taumata Runanga.

The hope is that *One City – Many Voices* will engender a sense of place and pride in Waitakere City, which now boasts a population of nearly 200,000, particularly in younger residents, whose story remains largely untold.

Background to Project

The impulse for a history of Waitakere City/West Auckland has lived in the hearts of a number of the city's mayors for many years – latterly in incumbent mayor, Bob Harvey's. In 1972, then Waitemata County Council chairman Col. A. R. Hughes commissioned respected journalist Eugene Grayland to write a history to celebrate the county's centennial in 1977. The well-written and researched *Waitemata County to City History* was the result but due to Grayland's untimely death in 1976, it never saw a lick of printer's ink.

By 1974 Waitemata County had morphed into Waitemata City, a change Government-employment scheme worker John Kelleher attempted to integrate into his revision of Grayland's manuscript in the late 70s, probably at the request of Mayor J. F. Colvin. But once again, publication proved elusive. Some Student Community Service Programme workers had a crack at the manuscript in the mid 1980s but that was never published either.

Gary de Forest was commissioned by Tony Covic (Waitemata City Mayor 1980-83) to rewrite the manuscript, which he finished in 1985. Alas, *A History of Waitemata* didn't make it to print either. In the mid 1990s Mayor Bob Harvey and ex-Waitakere City Council employee Tom Collins decided to revive the history project using the Grayland and de Forest source material to write a history (tentatively titled *Struggle Country*) from scratch. Some work went into this project and although it did not progress, it stayed close to Mayor Harvey's heart.

Other histories of Waitakere City/West Auckland were laboured over for many years and it is fair to say that the landscape is fair littered with unpublished manuscripts that have disappeared into the Bermuda Triangle of the West's civic and social history (there are notable exceptions, of course!). These fascinating 'lost' manuscripts include noted Maori academic Bruce Biggs' *The Waitakere Ranges*, written in 1940 when he was just 19. This manuscript, complete with photographs and paintings, traces mainly Maori history, including myths and legends. Then there's the unpublished biography of Dr Fred Rayner, who built the Piha Mill in 1910, Wallace Badham's *Ironbound Coast* about the history of Whatipu and Karekare, written in the 1950s but never published, and lawyer Morris Lennard's [1903-1988] *Memories of Piha*, unpublished at his death. The list goes on.

Fortunately, a number of historians and writers have published well-written books on various areas and themes within the City over the years; notably Dick Scott's *Fire on the clay; the Pakeha comes to West Auckland* [published in 1979], commissioned by Ceramco Ltd to celebrate its 50th anniversary and said by some to be the quintessential history of Pakeha settlement in West Auckland, to date.

But over 27 years of important social, cultural and economic history still begs to be written and fortunately, sleeping dogs did not lie - the Waitakere City/West Auckland History Project got new legs in 2005 when Waitakere City Council committed some funding towards exploring the writing of a contemporary history to celebrate its 20th anniversary in 2009.

The proposed history cannot detract from the recently published *Waitakere Ranges* – edited by Bruce and Trixie Harvey. This fantastic book is testament to years of painstaking research and writing, however, its accessibility for many residents is debatable, leaving space for a modern history that appeals to a wide cross-section of readers.

The Road Ahead

Most importantly, human stories of courage, survival and endeavour, rather than geological features, will sit at the heart of *One City – Many Voices* and Maori history will be embedded into themed chapters, in consultation with Te Kawerau a Maki and Ngati Whatua.

There will be approximately 20 themed chapters and 4 ephemera chapters (whimsical chapters to break up the denser themes), each written by a specialist writer, with proven research and writing skills in their area. The chapters were developed in consultation with WCC Kai Whakarite, Rewi Spraggon, who recommended Maori history be embedded into each chapter, with the exception of Chapter 2, which is a dedicated pre-European history.

Further discussions with WCC Maori Issues Manager, Wayne Knox, raised the possibility of a further dedicated chapter on the urban Maori story, which we will continue to explore in an effort to iron out overlaps with other chapters on social services, education, civic history, sport etc.

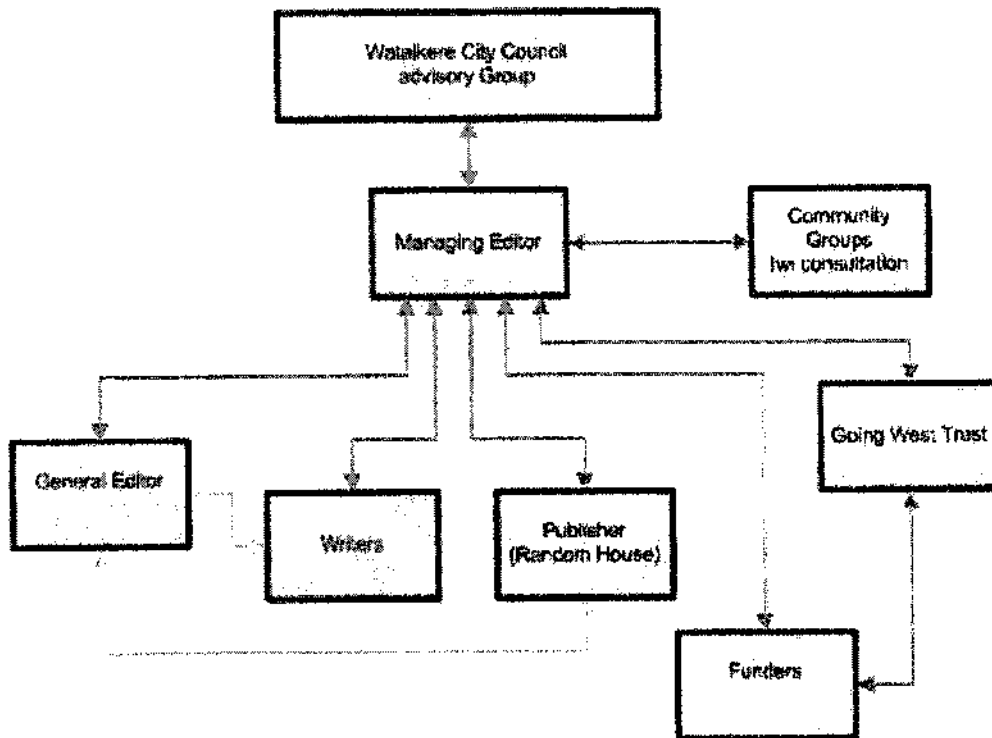
A Memorandum of Agreement between Waitakere City Council and Random House was signed off in September.

As Managing Editor of the history project, my immediate tasks are to secure additional external funding. Writers are in the process of being contracted and briefed (October/November 2007) for a copy delivery date of late April 2008.

General Editor Finlay Macdonald (ex-*New Zealand Listener* editor) will edit each chapter and then write over-arching introductions to them that will link and contextualize the history. Publication is set for late 2008, with a publicity drive in Feb/March 2009 leading up to a launch date in late March 2009.

One City, Many Voices will be heavily illustrated with integrated colour and black & white photographs and maps, including one large (possibly double page) generic geographical map that identifies all locations in the text. The ratio of images to text will be 30-70%.

Management Structure



This structure of governance, with strongly delineated management roles and clear lines of communication, ensures the project will run smoothly and meet deadlines. A clear management structure will also help keep the project on budget.

The Waitakere City Council-appointed Managing Editor sits at the centre of the project, holding the lines of communication and responsibility clearly to ensure that the WCC Advisory Group deals with issues of governance, rather than being involved in the day-to-day management of the project. It also means the Advisory Group has one key person who is accountable to them.

The Going West Trust, well-known for its work in arts and literature in Waitakere City, has agreed to act as the non-profit funding arm for the history project.

Draft Content Map

Waitakere City History (as at October 8, 2007)

* Please note this is a working document. Writers for Chapters 2, 3 & 7 are under negotiation.

| | |
|---|--|
| <p>Foreword by Mayor and/or PM</p> | |
| <p>Chronology of Events Compiled by Robyn Mason, Ruth Kerr and others. Edited by Finlay Macdonald</p> | <p><i>Notes: A chronology of significant events that will help the reader contextualize chapters.</i></p> <p>Issue: Chronology either at the front or as a sidebar at the beginning of each chapter. Under discussion.</p> |
| <p><u>Chapter 1</u> Geology/Geography of the West Suggested title: West of the Whau Confirmed writer: Bruce Hayward Geologist and marine ecologist Word count: 5000</p> | <p><i>Notes: How the land formed, including soil types, climate, river systems; how we define its variable boundaries (e.g. West of the Whau); people's relationship to the land (e.g. how did the geography define its use). Covering the block faulting that created the Mamukau Harbour [and diverted to the Waikato River] plus tectonics and off-shore volcanics that created Waitakere Ranges. Need to define the 'West' as Waitemata County extended to the Makarau bridge and Waiwera at one time.</i></p> |
| <p><u>Chapter 2</u> Pre-European Maori History Suggested title: Confirmed writers: Graeme Murdoch – ?Director of Heritage at Auckland Regional Council & Te Warena Taua – Te Kawerau a Maki Word count: ?????5000</p> | <p><i>Notes: Important to include meanings of significant place names.</i></p> |
| <p><u>Chapter 3</u> Early European Settlement – pre 1900 Suggested title: Struggle Country Suggested writer (under negotiation): Nina Nola - PhD thesis on immigrant writing Word count: 5000</p> | <p><i>Notes: Early 1800s-1900. British immigrants from 1844. Farming, saw milling, clay and gum industries etc. through orchardists, winemakers etc. Include pioneering characters such as Don Buck, Henry Swan, Fred Rayner etc. Importance of founding suburbs like Henderson, New Lynn and Glen Eden.</i></p> |

| | |
|--|--|
| <p>Chapter 4 Immigration – post 1900 Suggested title: Hard Landings Confirmed writer: Keith Stewart – wine writer/historian Word count: 5000</p> | <p>Notes: <i>Late 1800s-early 1900s (pre WWI) – Dalmations (gum diggers, orchardists, vintners); post WWI through to WWII – (?Europeans); post WWII – (UK [two-pound Poms], Dutch & Maori [rural exodus]); Polynesian immigrants – Tokelau; Niue; Cook Islands; Samoa; Fiji; Tonga and Tuvalu (1960s) brought in to man factories (Cambridge Clothing, Crown Lynn etc) – created blue collar suburbs. Dawn raids – ?1980s. Urban Maori migration gave rise to gang culture in the West. Asian immigrants ? timeframe. When did Chinese come to West Auckland? This chapter will explore the loss and grief carried in the hearts of early immigrants from Eastern Europe and their umbilical chords back to their homelands. Traffic backwards and forwards and \$\$ sent back to support the Communist cause and inherited trauma from uprisings. Peter Babich's father – at 13 his mother pinned equiv of a pound inside his jacket, kissed him goodbye and sent him off to the other side of the world. Also Vic Sunde. Should define cultural differences and the challenges faced by new immigrants.</i></p> |
| <p>Chapter 5 Gateways to the West/Transportation Suggested title: Confirmed writer: David Luxton – writer & ex-president of the West Auckland Historical Society Word count: 5000</p> | <p>Notes: <i>Importance of these gateways. Greytown [Avondale Central and South] – now Blockhouse Bay; Manukau Heads (including Orpheus disaster of Feb 7, 1863 with the loss of 189 lives. There were 258 people aboard and stories abound about survivors swimming ashore and disappearing into the bush.), Huapai, Kumeu, Pitoitoi [Riverhead], Te Awaroa [Helensville] etc. Shipping (including waka on Manukau Harbour), roading (development of car culture due to isolation, effect Harbour Bridge/motorway [1960-64] had on West), rail etc. See "God Willing and Weather Permitting-The Upper Waitemata Harbour" by Malcolm Hahn.</i></p> |
| <p>Chapter 6 Industry & Commerce Suggested title: Confirmed writer: Paul Moon – Historian/writer; Prof of History at AUT Faculty of Maori Development Word count: 5000</p> | <p>Notes: <i>Early Maori commercial enterprises. After farming (sheep and cattle), timber, clay, gum, tanneries, horticulture/viticulture etc, came the rise of furniture, broom, clothing and pottery manufacturers in the early 1900s, which precipitated the explosion of post-war blue collar workers that populated new suburbs – 'worker suburbs' with majority of people commuting out of the city to work. Dearth of infrastructure/public facilities to cater for new residents. Also the immigrants brought in to man the factories in the 1960s-70s - comment on how this influx and the housing developments associated with them changed the social face of the West. Air Force etc, plus new light industrial-commercial industries such as filmmaking, tourism, boatbuilding etc. However, ?60% of residents still commute to work from the city. Also covering things like Lynmall being the first mall in NZ.</i></p> |

| | |
|---|--|
| <p><u>Chapter 7</u> Social Services Suggested title: Suggested writer (<i>under negotiation</i>): Tony Mayow??, in consultation with Pita Sharples Word count: 5000</p> | <p><i>Notes: Early influences and link between churches and social services in the West. Growth of urban marae and social services attached – Waipareira (John Tamihere) /Hoani Waititi (Pita Sharples). Pan-tribal story – disenfranchised urban Maori with massive social problems. What religions/beliefs did new immigrants bring to the city in the 60s/70s? International Buddhist Centre in Huia, ashram in Crockett Lane, Henderson. Cover the growth of Polynesian churches following the wave of immigration in the 60s-70s and the more recent rise of Asian churches. Mormons – most influential in WA post WWII. The role of The Trusts in the funding/provision of social services in the West. ?First resident doctor – Moody in Glen Eden. History of policing in the West. West ‘Lodges’ – Independent Order of Oddfellows, Manchester Unity, Masons. Came out of Ireland. Waitakere Hospital - ?pre-hospital services. Also, role of WEA (Workers Educational Association) – programme includes: English for new migrants; Te Reo Maori; Driver education, including learner licence; Health, well-being and safety; Personal Development; Community Development; Social & Political Issues.</i></p> |
| <p><u>Whimsical Chapter 1</u> Water Suggested title: Confirmed writer: Peter McCurdy - Maritime Heritage & Design Word count: 2000</p> | <p><i>Notes: A whimsical look at how Westies play in their waterways - harbours/creeks/streams/rivers/beaches. Henry Swan story. Dams – supplying Auckland’s water. Twin Streams project. Surf Lifesaving.</i></p> |
| <p><u>Chapter 8</u> The Manukau Harbour Suggested title: Confirmed writers: Bruce Harvey (wrote Whatipu book) and Trixie Harvey – edited <i>The Waitakere Ranges</i> Word count: 5000</p> | <p><i>Notes: Harbour communities, including Cornwallis, Huia/Parau, Laingholm, Titirangi and Green Bay Baches for city dwellers/recreational use.</i></p> |
| <p><u>Chapter 9</u> Politics - National Suggested title: Confirmed writer: Jonathan Hunt – NZ High Commissioner in London Word count: 5000</p> | <p><i>Notes: National, including politicians such as Dr Martyn Finlay, Michael Joseph Savage, Michael Bassett, Ralph Maxwell, Jonathan Hunt, Leila Harre (??who else), rise of Waipareira Trust and Maori politicians in the 1980s-90s and gay MP Chris Carter. Maori Party 2005 – Pita Sharples/ John Tamahere. ?George Grey – MP for Auckland West - ?when/where did this extend to.</i></p> |

| | |
|--|--|
| <p>Chapter 10 Education Suggested title: Confirmed writers: Judith Devaliant – writer/historian; wrote book on first woman mayor Elizabeth Yates and Kate Sheppard biography & Lionel Devaliant – educationalist; ex principal Green Bay High Word count: 5000</p> | <p>Notes: From early school at Huia to pioneering initiatives such as Hoani Waititi Marae kaupapa Maori School, Timatanga Community School and Green Bay High School etc. Some visionary academics e.g. Des Mann at Green Bay. Steiner school in Laingholm – land bought for \$1 from Ceramco. Kelston Deaf School. Pasifika – Dr Linita Manu'atu – Senior Lecturer in Education, AUT is a good resource. Has an interest in Pasifika languages/cultures being lost to dominant European culture. Also Karen Sewell, ex principal of Green Bay High – now Secretary for Education MOE. Also Waitakere Education Sector Trust – coordinated the Waitakere Sustainable Learning conference in March 2007. WEST chair is Carol Ngawati.</p> |
| <p>Chapter 11 Visual Arts Suggested title: Confirmed writer: Linda Tyler - Director of the Centre for New Zealand Art Research & Discovery at the University of Auckland. Word count: 5000</p> | <p>Notes: Early photographers, fine artists etc, through to the growth of artistic communities e.g. Titirangi. Painters, potters, sculptors, musicians, photographers, jewelers, etc. Freedom found in living in bush/beach environments, away from commercial and social pressures of city dwelling. Influence of Ranges on artists etc.</p> |
| <p>Whimsical Chapter 2 Waikumete Cemetery Suggested title: Grave Matters Confirmed writer: Matthew Gray – Editor <i>Western Leader</i> Word count: 2500</p> | <p>Notes: Waikumete Cemetery stories - murderer buried standing up so he never gets any peace etc. Flu epidemic. ANZACS. Dalmation crypts. An Urupa or burial area was opened at the Waikumete Cemetery, in 1996, to meet the needs of Maori.</p> |
| <p>Chapter 12 Storytelling – Writers/poets/theatre/ cinemas/actors/musicians/dancers Suggested title: Confirmed writer: Tara Werner – writer/newspaper critic Word count: 5000</p> | <p>Notes: Including Maori mythology and writers, poets, playwrights, etc. Gee, Shadbolt, Curnow. Storytellers' relationship to the land. Importance of community theatres e.g. The Playhouse, Titirangi Players etc. Lopdell House. Corbans Estate Arts Centre. Also community cinemas such as Hollywood, Westwind in Avondale. Also, Pocket Opera Company 1959-1965 (Bernard Holibar – 818-9349). Growth in number of filmmakers, actors etc in Waitakere. Needs to cover early filmmakers such as Rudel Hayward – On the Friendly Road was filmed in the Waitaks. Hayward was NZ's first filmmaker of note. Story of South Pacific Films – John Burnett. Growth of Kapa haka (Hoani Waititi) and P1 performance groups? Serie Barfood – P1 poet. Rewi Spraggon and Te Warena – Te Kawerau a Maki storytellers. Graham Gash in the 1980s – musician.</p> |

| | |
|--|---|
| <p>Chapter 13 The West Coast Suggested title: <u>Confirmed writer: Mary Woodward</u> – writer (<i>The Landscape of My Heart</i>) Word count: 5000</p> | <p><i>Notes: Recreational use, baches, walking tracks, surfing, fishing (including Whatipu Lodge) etc, including Whatipu, Piha, Te Henga, Karekare. Bob Harvey has pics of a whale stranding and shipwreck on the Coast.</i></p> |
| <p>Chapter 14 The Waitakere Ranges Suggested title: <u>Confirmed writer: Simon Grant - environmentalist/writer</u> Word count: 5000</p> | <p><i>Notes: Including recreational use and farming, transmission and water catchment (e.g. effect on growth of greater Auckland). Huia and Nihotupu water filter stations in the Ranges are superb pieces of art deco design. Water was collected in Auckland from the duck pond in the Domain and later Western Springs until it shifted out West in the 1920s. Also, according to Ben Copedo (WAHS) there were whiskey stills in the Ranges to supply the damn workers. Ecological importance of the Ranges. Bob Harvey has a very old linen map of a subdivision planned for the Ranges. Much of Titirangi was farmed in the early 20th century with strawberry fields etc. There were earlier initiatives to protect the Ranges but the Auckland Centennial Memorial Park Act of 1947 established it as a park.</i></p> |
| <p>Whimsical Chapter 3 Ranges as safe haven Suggested title: Gimme Shelter <u>Confirmed writer: Ruth Kerr</u> – writer/biographer Word count: 1500-2000</p> | <p><i>The Ranges as a haven for rogues and vagabonds. The George Wilder story. Why often dispossessed artists/writers/creatives gave refuge to criminals and outcasts. Brothers-in-arms stories. ?? Judy Lawley's story abt starting a young social worker in WA. Ben Copedo mentioned a settler at the Cascades housing a man on the run from the services during ? WWI or II.</i></p> |
| <p>Chapter 15 Architecture & Design Suggested title: <u>Confirmed writer: Douglas Lloyd-Jenkins</u> – writer (<i>At Home - A Century of NZ Design</i>); curator at Hawkes Bay Museum & Art Gallery Word count: 5000</p> | <p><i>Notes: Including Clariss Cave, Ian Athfield, Richard Priest, Tibor Donner (designed Atkinson House at 1 Rangawai Rd and his own house in Kohu Rd (Alina Hughes has lots of info on this). Donner designed the Parnell Baths, the Greys Ave building for ACC. Items from this building are incorporated into his house, now owned by Paul and Anna Creighton. Ron Sang and Group Architect houses in WA etc. There are only 9 buildings listed on the NZHPT Register of Historic Places. Check out actor Vicky Haughton's art deco house on Pataroa Rd, Titirangi. Also some stunning modernist houses in the Ranges. Also, might be worth checking out West Auckland Historical Society president Trevor Pollard's house at 1 Opopu Rd, Titirangi. He bought the section (next to McCahon's) as a teenager and designed his house, then went down country with his new wife (on their honeymoon!) to source and mill the timber before coming back and building the house they still live in. Vernon Brown designed house at 55 Arapito Rd, built for Archibald Fisher, head of Elam School of Fine Arts in 1957.</i></p> |
| | |

| | |
|---|---|
| <p>Chapter 16 Fashion designers & Textile artists Suggested title: Shaping the Cloth Confirmed writer: Helen Schamroth (100 NZ Craft Artists) Word count: 5000</p> | <p>Notes: Eg Trilby Yates, Rosemary Muller, Bruce Papas, Trelise Cooper, Karen Walker etc. Also Kate Wells, Miranda Brown, Alison Milne (weaver).</p> |
| <p>Chapter 17 Heritage Suggested title: Fragile Remains Confirmed writer: Dr Sara Donaghey – Senior Lecturer School of communication Unitec New Zealand. PhD thesis on heritage) Word count: 5000</p> | <p>Notes: <i>What heritage do we value in Waitakere and how do we honour it? Eg gate at winery with Baxter, Glover and McCahon's signatures etched into it. McCahon House and Shadbolt House. New Lynn Hotel. Maori sites. Ref: WCC Heritage Strategy March 2004</i> http://www.waitakere.govt.nz/gh/enl/ppi/pdf/heritagestrategy.pdf</p> |
| <p>Chapter 18 Civic History Suggested title: Confirmed writer: Jade Reidy – writer/historian. Wrote Not just passing through – The Making of Mt Roskill. Word count: Average to Higher</p> | <p>Notes: <i>Local body politics, including Waitemata County Council (1876-1974), Waitemata City Council (1974-1989) and Waitakere City Council (1989-). Personalities like Col. Hughes, Tony Covic, Assid Corban, Tim Shadbolt and Bob Harvey. Maybe something on the Mrs Mayors – personalities such as Assid Corban's wife. Also licensing trusts. ?Only place that still has them. Relationship to community etc.</i></p> |
| <p>Chapter 19 Sport Suggested title: Confirmed writer: Innes Logan – Editor Spasifik magazine Word count: 5000</p> | <p>Notes: <i>Including Arthur Lydiard's use of Waitakere Ranges to train top athletes and Kelston Boys' as training tank for All Blacks. Roy Williams; Beatrice Faumuina; Kapa haka</i></p> |
| <p>Whimsical Chapter 4 Media Suggested title: The Glue That Binds Us Confirmed writer: Rene Bridges – Editor The Titirangi Tatler Word count: 2000</p> | <p>Notes: <i>Quirky stories about media in WA – importance of community newspapers e.g. Western Leader in blue collar communities. The Roundabout – produced by Audrey and Vic White for over 40 yrs in Laingholm. Won Infratil Award in ?2006. Reports everything from old recipes to home births. Global move back to localised media.</i></p> |

| | |
|---|--|
| <p>Chapter 20 Towards the future Suggested title: Confirmed writer: Bob Harvey – Waitakere City Mayor Word count: 5000</p> | <p><i>Notes: Current demographics, new immigrants, changing face of the West, links back to past, summary of where we have come from and visions for the future of the city etc.</i></p> |
|---|--|

The Draft Content Map for a history of Waitakere City was developed in consultation with:

- Mayor Bob Harvey
- Fiona Cunningham (Mayoral Executive-WCC)
- Naomi McCleary (Arts Manager-WCC)
- Alina Hughes (Principal Advisor – Heritage-WCC)
- Robyn Mason (Local History Collections Advisor-WCC)
- Bruce Symondson (Archivist-WCC)
- Rewi Spraggon (Maori Services Librarian-WCC)
- Murray Gray (Gone West Slightly Used Books)
- Ruth Kerr (Writer/Researcher-Medial Associates)
- Tanya Wilkinson (Director – Corbans Estate Arts Centre)
- Michael Moynahan (Managing Director – Random House)
- Wally Thomas (Director: Public Affairs-WCC)
- Margaret Sinclair (Commissioning Editor – Random House)
- Tom Collins (ex WCC Engineer)
- Con Anderson (West Auckland Historical Society)

Ruth Kerr
Managing Editor
Waitakere City History Project
PH: (09) 817 9943
MOB: 027 310 2204
medial@ihug.co.nz

September 2007

APPENDIX 2

WAITAKERE CITY – HISTORICAL THEMES

J Coster
4 Pages

A80

APPENDIX 2

WAITAKERE CITY – HISTORICAL THEMES

1836 – Timber

The West Auckland timber industry lasted for around 85 years, beginning in 1836 with the establishment of Thomas Mitchell's sawmill at Cornwallis. Thomas Henderson and William Swanson moved the industry's focus to Henderson and Swanson between 1842 and 1867 (when Henderson's mill closed) but milling was established by the Gibbons family at Huia by 1854 and, apart from Kauri Timber Company operations at Waitakere in the 1890s, the industry's closing years, from 1872, were confined largely to the west coast, at Huia, Whatipu, Karekare and Pararaha. The industry was largely finished by the time of the closure of the Piha mill in 1921. In the next generation, writer Jane Mander and artist William Goldie, were both children of west Auckland timber millers.

1850s - Farming

Pastoral farming was established in west Auckland by at least the 1850s, when the Bishops farmed near Huia, John and George Laing at Laingholm and R.O. Clark at Hobsonville. In the 1870s, the Ness and Cowan families farmed at Piha and, later, J.N. Bethell at Piha and Te Henga.

1852 - Ceramics

Industrial potteries in west Auckland began in 1852 with the establishment of the Pollen brickworks on the Whau River. Within a few years, R O Clark and his family had begun production at Hobsonville and around the turn of the century, New Lynn became the centre of Auckland's brickmaking industry, with the rise of names such as Crum, J J Craig and the Gardner brothers (grandsons of R O Clark). The Amalgamated Brick and Tile Company was established in the late 1920s. Briar Gardner, granddaughter of R O Clark, was an early pioneer of studio pottery in the 1920s and Jova Rancich established one of the first domestic potteries in the 1930s. Crown Lynn, under the guidance of Tom Clark, became the country's largest producer of domestic pottery from around 1940 until its transformation to Ceramco in 1973 and closure in 1989.

1853 - Orcharding and Horticulture

Thomas Parr, who later built the historic house 'Albion Vale', established orcharding in Oratia in 1853 and at about the same time the Bishop family had an orchard near Huia. Other nineteenth century horticulturalists included the nurseryman William Long and orchardists J H Hougham and the Cranwell family of Lincoln Road, one of whose daughters, Lucy, became a botanist of international repute.

1880 - Manufacturing

During the 1880s, a variety of light industries were established in west Auckland, including Beetham's pickle factory in Henderson, Pirri's water-powered smithy and hardware business in Henderson, and Astley's tannery in New Lynn. A glue factory, varnish factory and nightsoil processing plant were also established in New Lynn around this time.

1902 - Wine

The first wine in New Zealand was produced by James Busby at Waitangi, and most nineteenth century wine production was on a small scale, in Hawkes Bay, Akaroa and Wanganui. In the Auckland region, Charles Levet was producing wine at Wellsford in 1863, and Israel Wendl, in central Auckland, by 1872. Winemaking came relatively late to Henderson, with the arrival of the Corban, Yelas, Vela and Marinkovich families in 1902-03. By 1915 other familiar Dalmatian winemaking names had arrived, including Balich, Babich and Ujdur, and the establishment of the west Auckland wine industry was underway.

1950s - An Artists' Colony?

In the mid-to-late twentieth century west Auckland, and Titirangi in particular, became associated with artists, potters and writers, including the painter Colin McCahon at Oritori Bay (and friends such as poet John Caselberg and artist Lois McIvor); potters Briar Gardner, Frank Carpay and Len Castle; author Maurice Shadbolt, and photographer Brian Brake. Contemporary artists, writers and musicians such as John Edgar, Anne Robinson, Geoff Moon, Dick Scott, Sandra Coney and Mahinarangi Tocker continue this tradition. In recent years, Waitakere City has become a centre of the film industry.

References:

1. Anon. A Rough History of Titirangi and Its Environs <http://titirangi.net/history2.html>
2. Coney, Sandra, 2000. Piha <http://www.piha.co.nz/pihahistory.htm>
3. McCahon House Trust, 2003-2007. McCahon - The Titirangi Years. <http://www.mccahonhouse.org.nz>
4. Scott, Dick, 1979. *Fire On The Clay The Pakeha Comes To West Auckland*. Auckland, Southern Cross Books.
5. Scott, Dick, 2002. *Pioneers of New Zealand Wine*. Auckland, Reed/Southern Cross.
6. Lloyd Jenkins, Douglas, 2006, *40 Legends of New Zealand Design*, Random House NZ. (Includes artists associated with west Auckland such as Briar Gardner, Levi Borgstrom, Frank Carpay, Len Castle, Olive Jones and Jovan Rancich.)

APPENDIX 3

STAKEHOLDERS

J Coster
6 Pages

APPENDIX 3 STAKEHOLDERS

| Stakeholder | Contact | Status | Role, Interest, Requirements | Contribution | Consultation to Date |
|---|---|-------------|--|---|---|
| General Public | | Individuals | LTCCP consultation | Support | None |
| Waitakere City Council | Culture Arts & Events Special Committee | TLA | Governance, Decision-making | Approval to proceed, ongoing governance | Reports to Meetings Oct.06, Sep.07 |
| Waitakere City Council Staff | A Wimmer, N McCleary, S Jowett, M Riley, G Campbell, W Knox, R Spraggon | TLA | LTCCP, Annual Plan, Strategic Priorities, Arts & Culture Strategy, Heritage Strategy Action Plan, Guiding Principles, Corban Estate. | Information, Consultation, Approval | Informal Meetings |
| Waitakere City Libraries Staff | S Scott, D Dromer, R Mason | TLA | Storage, documentary heritage, photographs, oral history, local history | Knowledge, collections | Collection Assessment, Informal Meetings |
| Waitakere City Archives Staff | B Symondson | TLA | Storage, interpretation | Knowledge, collections | Collection Assessment |
| Auckland Regional Council | | TLA | Partner? | Knowledge, Expertise, Funding? | None |
| Auckland Regional Council Staff | R Brassey | TLA | Heritage buildings, storage | Expertise, funding | Informal communications |
| Waitakere Arts & Cultural Development Trust | Trustees | Institution | CEAC, "Landlord", Governance?, Committed supporter | Guidance, funding?, synergy | Presentation to Board Meeting Aug.07 |
| Corban Estate Arts Centre Staff | M Sutcliffe | Institution | "Landlord", facilities, activities | Planning, Consultation, Logistical support, funding?, synergy | Focus Group Sep.07, Concept Workshop May.07, Informal Meeting |
| Unitec | R Paul | Institution | Co-tenant, services, synergy | Expertise, facilities, synergy, funding? | Concept Workshop May.07 |
| Grant agencies | NZLGB, ASB Trust, Sky City etc. | Institution | Feasibility, Long term outcomes | Funding | None |
| Development Consultants | K Mentz, C Bossley, M Hall, C Jones, J Hannan | Individuals | CCQ Concept Development | Expertise, Planning | Concept Workshop May.07 |

| Stakeholder | Contact | Status | Role, Interest, Requirements | Contribution | Consultation to Date |
|---|--|-------------|---|-------------------------------------|--|
| NZ Historic Places Trust, | S Reynolds | Institution | Heritage buildings | Expertise | Informal communications |
| Waitakere Pacific Arts and Cultural Trust, | Mary Ama, Pera Si'ulepa (WCC) | Institution | Co-tenant, services | Cultural expertise, synergy | Concept Workshop May.07 |
| Sauerbier Collection | I Wilkinson | Individuals | Exhibition, Curation, Storage of Sauerbier collection | Knowledge, collections | Informal communications |
| Sauerbier Family Estate | Ludwina Sauerbier | Individuals | Storage, interpretation, family connection | Knowledge, connections | None |
| Corban Family | Clr. A Corban | Individuals | Storage?, interpretation? | Knowledge, collections, connections | Collection Assessment |
| Private Collectors | Diamond, G Stewart, J Green, M Gilligan | Individuals | Storage, interpretation | Knowledge, collections | Collection Assessment |
| Waitakere Central Community Arts Council | J Ellis | Institution | Cooperation, services | Knowledge, connections, synergy | Concept Workshop May.07 |
| Titirangi Community Arts Council & Upstairs Gallery | P | Institution | Cooperation | Knowledge, connections, synergy | None |
| Lopdell House Gallery | Lesley Smith | Institution | Cooperation, services | Knowledge, connections, synergy | Informal meetings |
| McCahon House | Lesley Smith | Institution | Cooperation, services | Information, Synergy | Brief visit |
| Shadbolt House | P | Institution | Cooperation, services | Information, Synergy | None |
| Kawerau a Maki | Saul Roberts | Association | Tangata whenua, consultation | Guidance, tikanga, korero | Meeting Nov.07 |
| Ngati Whatua | Bernadette Papa | Association | Tangata whenua, consultation | Guidance, tikanga, korero | Meeting Oct.07 |
| Portage Ceramics Trust | Lorraine Wilson | Association | Storage, public access to collection, interpretation | Knowledge, collections | Collection Assessment, Informal Meetings |
| New Zealand Ceramics Trust | Howard Williams | Association | Storage, public access to collection, interpretation | Knowledge, collections | Collection Assessment, Informal Meetings |
| Waitakere History Project | Ruth Kerr | Institution | Information, Interpretation | Information, Interpretation | Informal communications |

A85

| Stakeholder | Contact | Status | Role, Interest, Requirements | Contribution | Consultation to Date |
|--|----------------------------|-------------|--------------------------------------|----------------------------------|--|
| West Auckland Historical Society | Trevor Pollard | Association | Storage, interpretation, support | Knowledge, collections? | Focus Group Sep.07, Informal Meeting |
| Friends of Waikumete Cemetery | Aranne Donald | Association | Interpretation, support | Knowledge | Informal communications |
| Huia Settlers Museum | I Sutherland | Association | Interpretation | Knowledge, collections, loans | Focus Group Sep.07 |
| Dutch Museum Project | A v d Boon, Y v d Wetering | Association | Recognition, interpretation, support | Knowledge, connections, funding? | Focus Group Sep.07, Informal Meeting |
| Oratia Folk Museum | D Harré | Association | Interpretation | Knowledge, collections, loans | Informal Visit |
| Tram Terminus | D Harré | Association | ? | Synergy? | Informal meetings |
| Monterey Park Museum | ? | Association | ? | ? | Visit 2006 |
| West Coast Plan Liaison Group | K Witten-Hannah | Association | Support | Knowledge | Informal communications |
| Piha Historian | Sandra Coney | Individuals | | Knowledge, collections | Focus Group Sep.07, informal communication |
| Hoani Waititi Memorial Marae | | Association | Interpretation | Expertise, Insight | None |
| Waiparera Trust | | Association | Interpretation | Expertise, Insight | None |
| Individual Historians, Artists, others | | Individuals | | Expertise, Insight | Edgar, A Robinson - submission |

APPENDIX 4

CONSULTATION & SUBMISSIONS 2006-2007

West Auckland Historical Society

Friends of Waikumete Cemetery

Portage Ceramics Trust

Sandra Coney

Ian Lawlor

West Coast Plan Liaison Group

John Edgar & Ann Robinson

Waitakere Arts & Cultural Development Trust Board

10 Pages

APPENDIX 4

SUBMISSIONS

1. Submission from: West Auckland Historical Society Incorporated June 2006

...
Please find below the selection of feedback that we have been able to garner from our Committee membership. Also please note that the very short lead time given for our response has made it impossible for us to communicate with, or receive any kind of mandate from, our wider membership on the subject. Therefore please take this selection of feedback as the personal responses of individual committee members and not as a formal response of any kind from the Society.

1.1 Providing safe storage ideas pending the creation of a Museum

This is an excellent idea worth considering as an adjunct to existing organisations' efforts – with or without the creation of a Museum. It was suggested that it could be a properly controlled space for original and vulnerable materials and those items too large for the smaller collections. Or it could help in providing this capacity for smaller organisations. West Auckland Historical Society might then be able to concentrate on becoming a specialist facilitator for research, writing, and oral history gathering using its intended internet facilities and database and also to act as a community point for members of the historically minded public to convene and read and hear about that work.

...

1.2 Assisting in the establishment of one or more specialist museums

Broadly speaking our committee membership sees a place for localized, specialised and possibly substantially voluntarily manned museums and galleries. Perhaps an approach to focus these places on the individual and unique 'stories' within their designated area might be best, or on a specialised service to the community that a large civic museum cannot provide easily. Suggestions were e.g. the water supply story at Waitakere Dam, with links to the Rainforest express and Dam Train.

1.3 A central civic museum

This idea found unanimous approval amongst the committee, with the only hesitation being if it meant abolishing the existing smaller museums and galleries. A purpose built building was the only possible solution considered feasible. Suggestions were to use Corbans Estate or Tui Glen. The need to tell the historic story of our distinctive and significant locality was considered paramount and the need for proper professional conservation of artifacts, documents and photographs was well understood and supported. One of the key purposes for this civic museum might be as the 'hub' co-coordinator and facilitator for a 'wheel' of associated smaller institutions

In essence all of the responses we received were open to all of the options, with an emphasis on not losing the value of the existing organisations and with a very strong agreement with the need for a civic facility.

Gai Bishop
Secretary

ASB

**2. Submission from:
Friends of Waikumete Cemetery
22 June 2006**

Notes from conversation with Aranne Donald – telephone 22 June, 2006 (Jane Legget).

AD is mandated to speak by the Committee of the Friends of Waikumete Cemetery (FWC) in her role as President.

- a) FWC would ultimately support Option 5 (central civic museum), but acknowledge that some of the other options would come first (as preliminary steps).
- b) Recognise that if objects are not being collected now, they will all be gone.
- c) See a need for appropriate storage in the meantime
- d) Supports the use of Clark House¹ for administration or seminar room use but NOT for gallery or storage (as AD anticipates that this would involve significant physical interference with internal structure, walls etc.)
- e) Clark House is a “heritage artefact in its own right”, and should therefore remain as intact as possible. Unique in that all building materials designed and manufactured by Clark family enterprise.
- f) Would be OK to have a purpose-built building nearby, to serve gallery/storage functions.
- g) However, if option 5, then Clark House location not suitable – not sufficiently central.
- h) No strong views on specific sites, but suggests the Corban estate site as a possibility.
- i) Would like a central civic museum to cover more than just museum objects – include also archives, photographs, textiles etc.

**3. Submission from:
Portage Ceramics Trust
25 June 2006**

Notes from Lorraine Wilson –telephone call 25 June 2006 (Jane Legget)

LW speaking as Portage Ceramics Trust (PCT).
Portage Ceramics Trust is a Charitable Trust

Background

- PCT working with NZ Ceramics Trust, and have same objective of ultimately having a publicly accessible collection of ceramics covering full scope of NZ ceramic arts somewhere.
- PCT works often with Lopdell House

...

OPTION 2 – Storage – PCT would welcome this, and its collections could be candidates for this. Would allow professional services to be developed locally.

...

...

¹ Note – this site was volunteered by AD. No potential sites were specified or mentioned in the letter seeking stakeholder views.

OPTION 5 – Museum - Not sure about a general museum for Waitakere City as it would be cutting across existing work and collections, especially if encompassing natural history, general and specific history. Recognises that there would have to be lots of public consultation via LTCCP.

**4. Submission from:
Sandra Coney
17 July 2006**

Notes from telephone conversation with Sandra Coney - July 17 2006 (J Legget)

SC wears many hats, including Piha resident, ARC Cllr and chair of ARC parks and heritage committee, researcher of history of west Auckland activities and industries (e.g. surf-life saving, timber industry/railways etc.)

Experience of doing research led her to uncover or hear of assemblages of papers, documents, objects held by different individuals in far from ideal conditions, often at risk of dispersal, loss, irretrievable damage. Also aware of community organisations (e.g. surf club, tennis club, ratepayers' and residents' assoc) whose formal minutes, accounts, other records are held in different people's homes/premises, not collected as an archive. (Most more focused on the present than concerned about their organisations' history). People who know of her history interests often want to give her material or tell her about material found in garages, basements etc. which they feel should be saved.

Following a local find underneath an old bach (or similar) in Piha, various big bits of rusty metal found – parts of the Piha sawmill, bits of the Piha hauler, bits bearing NZ Railways insignia. She has temporarily rescued this (stored on Arataki Visitor centre site).

Thinks that if there was a Waitakere Museum this would become the obvious point where people would send (or seek advice about) such collections. Notes that people don't have the same awareness of the collecting and managing role of the city's archives and libraries, because they have no exhibition function. Also finds WCC archives hours inconvenient for researchers – 9-12 and 2-5 pm – have to take a two hour lunch break because not enough staff.

In 2004, she, Bob Harvey and various others wanted an exhibition to mark the 70th anniversary of Piha Surf club (first on the west coast). Developed a well-considered proposal, but project foundered for lack of a community exhibition venue. Believes a city museum would address this. Licensing Trusts had been discouraging. Would also have been an opportunity to recruit new members.

...

Responses to Options presented:

- Preference is a significant city museum. Thinks Waitakere needs more visitor attractions, especially for tourism income (SC seemed less focussed on the community-purposes of such a civic institution, but agreed this were also relevant). Could fulfil need for a secure and suitably equipped exhibition space for community-generated exhibitions. Important for heritage visibility, for people to know there was one point where heritage action taking place – a focal point for heritage activities.

A90