

*Analysis:*

The lower section of the Cantwell Stream has an interesting stream and a very accessible area of quality bush which is worthy of some form of protection. With suitable linkages this area would make a valuable addition to a walkway network.

*Recommendations:*

- Establish esplanade reserve to upper catchment area.
- Establish a walkway connection from Shaw Road to the stream corridor.

**ORATIA STREAM***Section One (from Parrs Cross Road to Knock Na Gree)**Vegetation:*

From Parrs Cross road to Knock Na Gree the stream passes mainly through Orchard. Very large willows and poplars with an understorey of mixed natives and weeds dominate much of the stream in this area. In the central section around the series of loops in the stream, the content of native streamside vegetation increases. Here there is a significant stand of mature vegetation consisting of very large poplars and oaks associated with some fine native canopy trees including kauri, kahikatea, totara, kowhai. The dense understorey is comprised of kanuka, tree ferns, maire tawake, kohekohe and mixed native shrubs together with a variety of invasive weed species particularly privet and bamboo and ginger. Although compromised, this area of vegetation is significant because of the size of the trees and relatively rich species composition. These are not common features in the intensive and highly modified horticultural areas in the lower catchment.

Upstream from the winding section of stream the land to the west rises steeply up toward Forest Hill Road. Through this area is a large triangular shaped piece of vegetation. The steep slope next the Oratia Stream has a very significant stand of broadleaf-podocarp forest with some large remnant trees a very good structure and species composition in the understorey layers. Canopy trees include kahikatea, tanekaha, and rimu, together with kauri higher up the slope. The diverse understorey include tawa, karaka, kohekohe, maire tawake, rewarewa and kowhai with tree ferns, nikau and diverse mixture of broadleaf shrubs.

The quality vegetation ends at the top of the slope where the land levels out and continues to Forest Hill Road. From this point to the road the vegetation has been cleared relatively recently and left to revert. A large row of pine trees associated with the boundary of the vineyard to the north, extend into the remaining vegetation. Underneath the intermittent pine canopy the vegetation is scrub comprising of a mixture of low native shrubs with areas of rank grass, gorse, bracken, and blackberry.

Back down along the Oratia Stream the abandoned orchard area continues on the eastern bank up stream to Knock Na Gree and is characterised by a number of gently sloping terraces divided by large established shelter-belt. The lofty mature oaks, poplars, pine and Tasmanian blackwood are particular features of this area strongly influencing the landscape character and providing a sense of scale and establishment.

*Stream:*

The stream is relatively wide and deep through this section with a relatively consistent stream profile.

*Access:*

Access is generally very good especially on the eastern side with flat platforms along the bank in many areas.

*Analysis:*

There is significant potential for a circulation linkages along this section of the Oratia Stream, with very good access and a connection to the existing esplanade reserve across Parrs Cross Road. The area has varied but accessible terrain, significant established vegetation, is close to main roads, areas of high population density and community facilities. It is therefore also eminently suitable for the establishment of passive reserve areas associated with the stream.

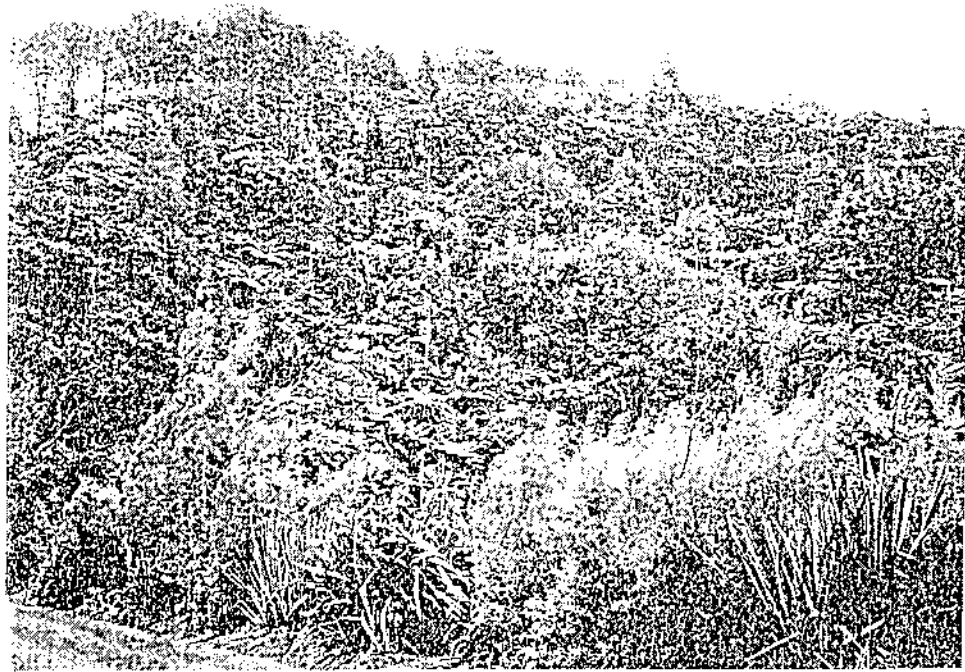
Centrally located along this section of stream large native and exotic trees combine with several loops in the stream create a series of defined spaces. In these areas the terrain consists of a mixture of gentle slopes with large flat areas. The landform vegetation create a variety of experiences with some larger open areas complemented by some more enclosed intimate spaces which would make very pleasant reserve areas without requiring significant modification. The esplanade reserve in this area should be extended to accommodate these areas.

On the eastern bank north of Knock Na Gree is a sizable flat area which is defined by the stream to the west, and elevated land lined with very large trees to the east. This area is nestled under the densely vegetated slopes across the stream, with excellent views of quality indigenous forest described earlier in this section. This stand, although quite small is of significant ecological and scenic value in the context of the Oratia catchment area. This status should be reflected and retained by establishing it as an area as a bush reserve.

The large flat area on the eastern side of the stream offers scope for an array of passive recreational activities. The substantial exotic and native trees provide a sense of establishment, and combined with the landform provide shelter definition and enclosure. Above the embankment next to the stream the land slopes gently to West Coast Road and the community hub which comprises of the Oratia School, Settlers Hail, store etc.

This general area is a suitable location for the establishment of a local domain as it provides;

- Opportunities for various forms of activity;
- variable terrain, including large flat areas;
- access to Oratia and Cable Streams;
- large spaces for informal sporting events and community activities;
- physical and visual links to areas of significant indigenous vegetation;
- existing large trees and shelter belts which provide a sense of scale, shelter and definition;
- long accessible road frontages;
- is close to the community hub.



P7 - East facing bush covered slope to the north of Knock Na Gree (refer Fig 1)



P8 - Proposed reserve area near winding section of stream (refer Fig 1)

---

*Recommendations:*

- ◀ Establish esplanade reserve along both sides of stream for whole section.
- ◀ Extend esplanade area to include areas between the bends in the stream and develop passive reserve area in conjunction with walkway in this area.
- ◀ Where practicable establish an accessway to accommodate a combined pedestrian/cycle/bridle path.
- ◀ Establish bush reserve on western slopes incorporating the stand of significant remnant forest.
- ◀ Link bush reserve and passive reserve network with West Coast Road and Forest Hill Road by way of access strips.
- ◀ Establish local domain near community hub extending from West Coast Road to the Oratia Stream to the north of Knock Na Gree.

**Section Two** (*western tributaries of the lower Oratia Stream*)*Vegetation:*

The small valley consists primarily of open grassed areas of orchard and vineyard. The predominant vegetation consists of large pines which define the upper area. The vegetation in the gullies is characterised by regenerating scrubby native vegetation combined with a proliferation of weeds such as wattle, woolly nightshade and gorse.

*Stream:*

Where the main tributary joins the Oratia Stream it is piped for a large section. Upstream, the open, gently sloping land is dissected by a series of small gullies with narrow open channels which feed into the main tributary.

*Access:*

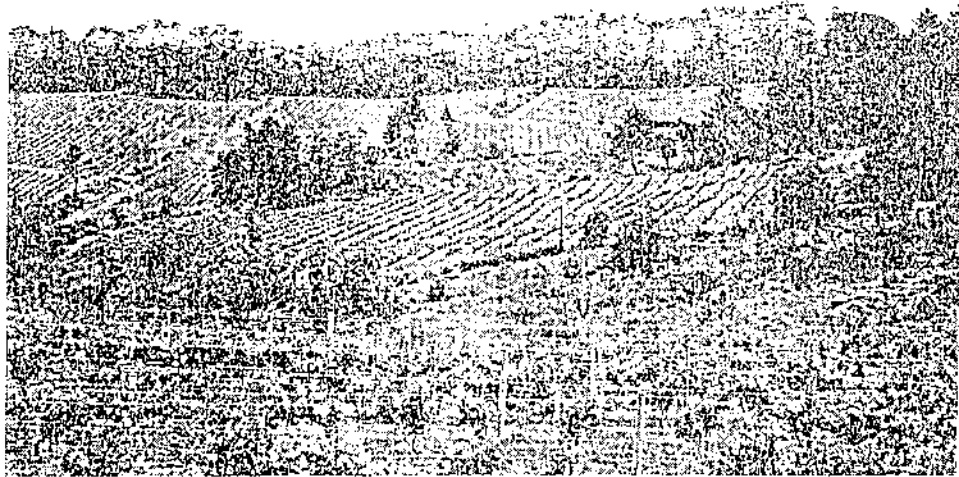
Access is generally good due to agreeable terrain and lack of significant vegetation.

*Analysis:*

The streams have been significantly modified and there are no existing ecological linkage opportunities. Where the stream channels are open they are too narrow to permit an esplanade reserve establishment.

*Recommendations:*

- ◀ Reform 'natural' streams where the watercourse is currently piped.
- ◀ Establish an accessway to accommodate a combined pedestrian/cycle/bridle path linking with Holdens Road.



P9 - View south from Holdens Road over western catchment of Oratia Stream (refer Fig 1)

### Section Three (from Knock Na Gree to West Coast Road)

#### Vegetation:

The lower portion of the stream passes by the Knock Na Gree camp. In this area there is little vegetation of significance except for the dense native vegetation located on the slopes above Knock Na Gree, outside the study area.

Further to the south the landuse on eastern side of the bank up to West Coast Road consists of small rural lifestyle blocks. The western side of this section is predominately open pasture with a dense narrow strip of young willows and poplars planted along the stream edge to assist in stream bank stabilisation. On the eastern side the vegetation comprises of low mixed native regeneration combined with weed species such as tree privet, bamboo gorse and woolly nightshade. Located at the edge of the pasture away from the stream are groups of large pine.

#### Stream:

Around the confluence with the Cochrane Stream, the Oratia Stream is up to 8m wide in some areas and deep and slow moving. The stream edge is well defined and there is flat accessible land on either side. Upstream from the camp the watercourse varies from 2 to 5m in width. The bank rises several metres above the stream level with relatively flat platforms either side. Around a series of bends toward in West Coast Road the stream becomes more narrow and shallow with the channel less defined and the aggregate exposed along the base.

*Access:*

Access along the stream in this area is generally good except for a few locations on the eastern side where the bank is steeper and the vegetation dense.

*Analysis:*

With relatively good access and significant vegetation up and down stream there is opportunity along this section to create a key walkway linkage through a relatively open area of high scenic value.

*Recommendations:*

- Establish esplanade reserve along stream margin and a walkway linking to West Coast Road



P10 - Western side of Oratia Stream from Knock Na Gree (refer Fig 1)

#### Section Four (from West Coast Road to limit of the Oratia Structure Plan Area)

*Vegetation:*

The first section of the stream above West Coast Road meanders through a large residential property with mature ornamental planting. Upstream the watercourse passes through a series of small grazed agricultural and horticultural blocks. In this area the stream is lined with willows and pine and clumps of tall kanuka. Further upstream at the boundary of the Oratia Structure Plan area, the stream flows through several hundred metres of dense native bush cover with successional broadleaves and podocarps emerging through understorey of mature kanuka and mixed native shrubs. Excluding a small area of pines on the eastern bank this vegetation is of good quality with a diverse, structured understorey and relatively low weed content.

*Stream:*

The lower section of stream is deep, wide and slow moving with gently sloping banks. Upstream it narrows as it passes through the farmed land and then becomes wide and shallow with low banks either side as it emerges from the bush.

*Access:*

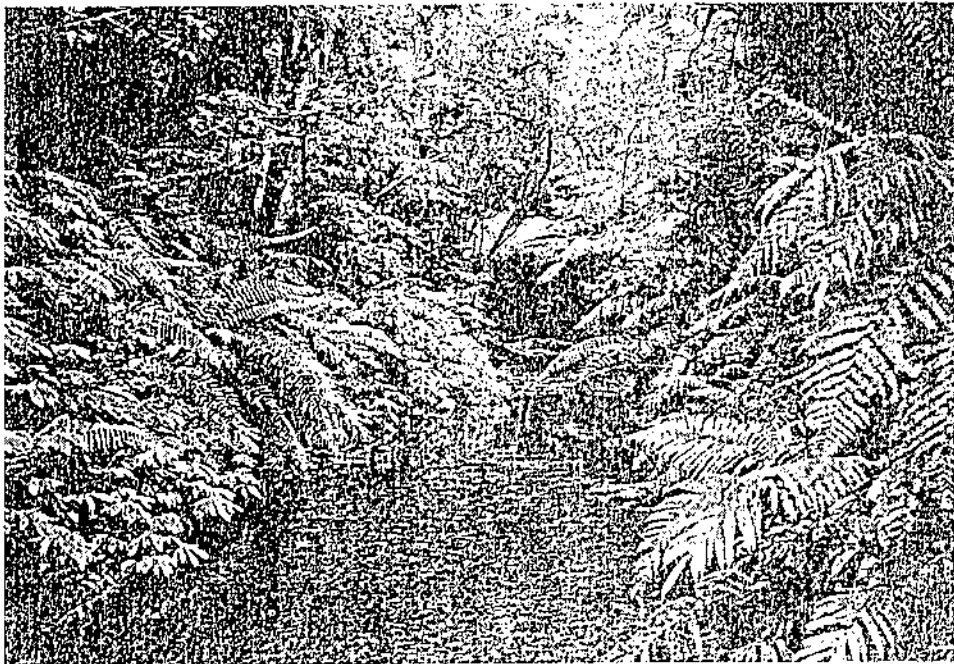
The stream banks through this section are generally quite accessible on either side despite some areas of dense vegetation.

*Analysis:*

There is an existing band of esplanade reserve from the point where the Oratia Stream enters the Structure Plan area up to Auckland Centennial Memorial Park. This esplanade reserve connects with a number of other reserves along the way as well as several access strips which join with upper parts of West Coast Road. The esplanade should be continued along this section of stream to West Coast Road creating a continuous link in conjunction with existing and suggested sections of esplanade reserve all the way from Scenic Drive to Parrs Cross Road.

*Recommendations:*

- Establish esplanade reserves to connect with existing reserve areas upstream.
- Establish walkway on the western side of the stream with a link to Parker Road and the existing reserve areas associated with the stream.



P11 - Stream in bush - upper section of the Oratia Stream (refer Fig 1)

---

## CABLE STREAM

### Section One (from the Oratia to West Coast Road)

#### Vegetation:

The surrounding landuse is a mixture of operational and abandoned orchard. Throughout much of this area the banks are relatively open with a low sporadic cover of rank grass, weeds and a few small clumps of low native shrubs. In several locations there are dense infestations of low willow gorse, blackberry, honeysuckle and woolly nightshade.

#### Stream:

Where the Cable Stream enters the Oratia Stream it forms a small recessed channel about a metre wide at normal flow rates. There are a few areas in the lower part of this section where the stream forms still shallow pools under a canopy of low vegetation. Generally, however it is characterised by a narrow drainage channel.

#### Access:

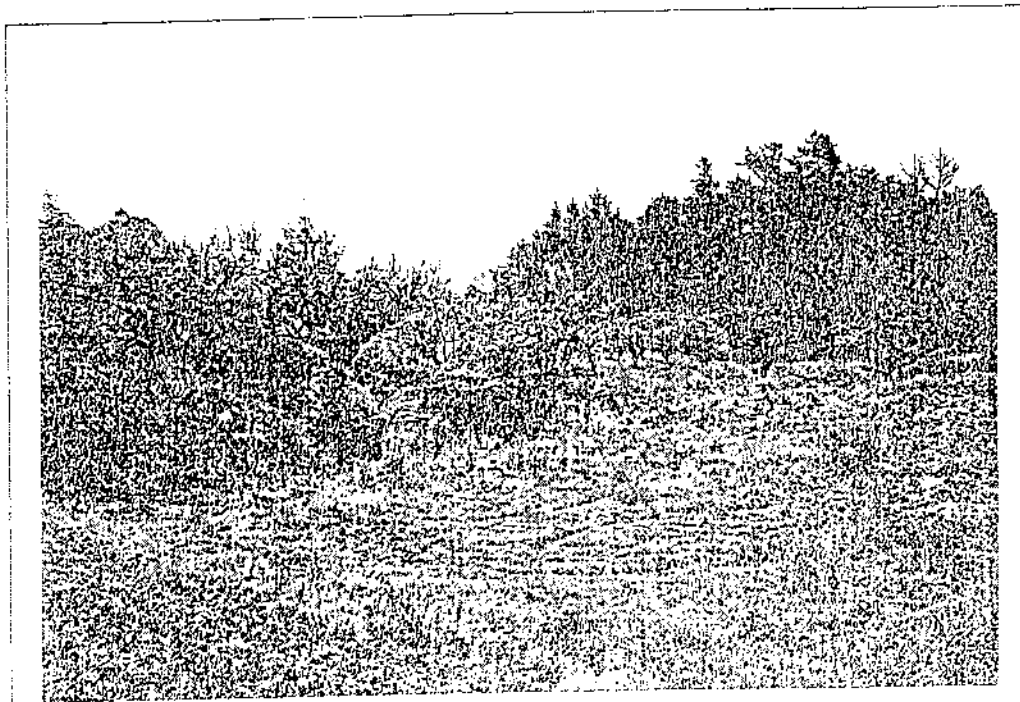
The terrain is gentle and the stream easy accessed along its length.

#### Analysis:

Although the stream is narrow, modified and there are no significant natural features or existing opportunity for ecological linkages there is potential for riparian restoration and for the creation of another strategic linkage between the community hub/domain and downstream portions of the Oratia Stream.

#### Recommendations:

- Establish reserve areas along the stream for riparian restoration and the formation of a combined pedestrian/cycle/bridle path.



P12 - View south of piped section of the Cable Stream in orchard (refer Fig 1)

---

### Section Two (*West Coast Road to Carter Road*)

#### *Vegetation:*

The lower part of this section is operational orchard which has very little significant vegetation associated with the stream. The upper catchment area is largely open grassland with pine shelter belts.

#### *Stream:*

The lower section of the eastern tributary, which flows through the centre of the orchard, has been modified considerably with large sections piped and open sections dug out or reformed. Along the open portions the watercourse forms a narrow open channel. The tributary which follows West Coast Road is characterised by a narrow open channel running through the orchard, which extends as far as Carter Road at which point the upper section has been piped underground. The head of the cable Stream is characterised by wide gentle swales which form the initial part of the drainage system

#### *Access:*

Access through this area is very good with little substantial vegetation and gentle slopes.

#### *Analysis:*

Although access through this area is good, the stream is narrow and modified; there are no significant natural features or existing opportunity for form ecological linkages. There is however potential for stream channel and riparian restoration

## COCHRANE STREAM

### Section One (*from the Oratia Stream to West Coast Road*)

#### *Vegetation:*

The Cochrane Stream enters the Oratia stream at the northern end of Knock Na Gree Camp. Where the two streams converge is a large flat triangular area of open grass associated with the northern end of the Oratia Native Plant Nursery. In this area a thin strip of planted native specimens defines the eastern bank of the Cochrane Stream. Further south toward West Coast Road the revegetation planting becomes considerably thicker and the bank much steeper. The eastern side of the stream is characterised by several small clumps of good natural native regeneration separated by more open grassland areas with young willows and eucalyptus. Dense low weeds cover the eastern side of the stream bank next to the road.

#### *Stream:*

The stream through this area is up to 5m in width, relatively deep with a well-defined profile.

#### *Access:*

There is good access along the western side of the stream except for a steep area next to West Coast Road. Several dense areas of low native vegetation limit access on the eastern bank.

*Analysis:*

Apart from good bush views there are few significant natural features associated with this section of stream, does however provide an opportunity to create a walkway linkage between the Oratia Stream, West Coast Road and the significant areas of bush associated with the upper reaches of the Cochrane Stream.

*Recommendations:*

- Establish esplanade reserve along stream margins with a walkway connection on the western bank to connect with proposed Oratia Stream bush reserve and domain with West Coast Road.

*Section Two (from West Coast Road to the upper tributaries)**Vegetation:*

To the south of West Coast Road the first portion of the stream passes through a triangular shaped orchard bounded by Carter Road, West Coast Road and the beginning of a large area of native vegetation to the south. There is no significant vegetation in this area.

At the southern boundary of the orchard the stream emerges from a large tract of vegetation which, associated with the stream corridor, extends all the way to the upper catchment area. The species composition and structure of much of this stand of bush indicates a history of grazing up to reasonably recent times. Common features of this area of bush are a high canopy of kanuka forest with emergent canopy species, and pine predominantly around the edges, but also extending into the bush in many areas. Generally, this area of vegetation is characterised by indigenous vegetation in quite advanced stages of regeneration or secondary succession, with varying species diversity and a relatively low component of adventitious weeds.

In the lower section there is small relatively defined area of podocarps, including rimu, kahikatea and tanekaha, mixed with broadleaf species. The understorey in this area is quite open in parts, although there areas of vigorous regeneration of broad leaf trees and shrubs. In some areas the stand is of a very even aged with quite open mid canopy with the lower tier dominated by pongas, in other areas the regeneration is more of mixed age with increased species diversity and a more complex understorey.

At various points, areas next to the stream have been cleared in more recent times. A few small areas remain in pasture but most have been left to revert to bush. Mid-way up this section of the stream corridor and around the fringes, are groups of large pines and younger areas of regeneration and weeds. Further upstream the dense cover continues with kauri becoming more prevalent both as large individual specimens and in and small homogenous pole stands.

*Stream:*

Through the orchard the stream channel is recessed and well defined and ranges from 2-5m in width. Above the raised bank on either side of the stream are shallow platforms which rise and increase in steepness away from the stream. Upstream within the bush up to the junction of the upper tributaries, the stream remains reasonably consistent in its size and appearance. In contrast to many areas, particularly in the lower catchment, where the stream channels have been modified over the years, streams such as the

Cochrane, which have retained a good buffer of vegetation remain relatively natural in their form and appearance. Within the bush the stream varies in width from 3 to over 8m, but is generally quite wide and shallow with large rocks scattered along its length and bedrock exposed in many areas. The stream channel is often ill defined merging with the low banks either side.

*Access:*

In the lower part of this section access along the stream banks is relatively good. Further upstream access to the side of the stream becomes difficult in some locations due to the steep and variable slopes associated with the stream banks.

*Analysis:*

The ability to extend the ecological corridor associated with this section of the Cochrane Stream is prevented by the presence of West Coast Road which creates a reasonably wide artificial barrier. The area of bush, although variable in composition and quality is significant because of its size, ecological value and potential for restoration. The area has significant scenic value also, with a tall, almost continuous canopy and impressive natural streambed. With the attraction of these natural features the area would make a valuable addition to the proposed reserve network and walkway system. Access up stream becomes very marginal so links higher up the catchment are not practicable. For this reason connections to Parker and Carter Roads would need to be provided before the confluence of the upper tributaries.

*Recommendations:*

- Establish esplanade reserve either side of the stream up to the confluence.
- Establish a walkway along the stream with access strips at appropriate locations providing walkway connections with Parker and Carter Roads.
- Establish a large bush reserve encompassing the most significant areas of vegetation associated with the stream.



P13 - Cochrane Stream near confluence of upper tributaries (refer Fig 1)

### Section Three (from the junction of the tributaries to the upper catchment)

#### Vegetation:

The surrounding landuse includes residential settlement, orchards and abandoned vineyard areas. Around the edges of the native vegetation associated with the upper catchment weed species are prominent. Large pine shelter belts are also a common feature. The vegetation in most of this area is similar to that described further down stream, particularly in the gullies associated with the streams. Between the two tributaries on top of the relatively flat plateau is a triangular area of dense young regenerating bush. The vegetation associated with the steep banks of the streams is generally much older and at a more advanced stage of regeneration. Tall, very old kanuka continue to form the main component of the canopy in this area together with emergent kauri and podocarps. The quality and composition of the bush is quite variable however.

#### Stream:

Toward Scenic Drive the stream forks forming two main tributaries. At the junction, the stream cascades in sheets over a broad flat platform of bedrock. The tributary, which enters the main stream from the southwest, emerges from the Mallum Gully. The stream channel along the Mallum Gully is very deeply incised into the bedrock and in many areas the sides of the gully are sheer rising directly up from the watercourse. In the very upper

section the stream has been degraded by the disposal of refuse into the gullies in some areas.

The main tributary of the Cochrane Stream is cut down into bedrock along much of its length and generally has steep and often inaccessible banks. The stream is consistently quite wide and shallow for most of the way up to its source.

*Access:*

Accessibility along the main tributary and the Mallum Gully is marginal for most of its length right up to the source due to difficult terrain, deeply incised streambed and dense under cover.

*Analysis:*

Although the stream is wide and there are significant natural features and high scenic value in this area, it is for the most part quite inaccessible. Therefore no reserve or linkages are suggested for this area. The esplanade reserves should be extended into the upper catchment but walkway linkages are not practicable.

*Recommendations:*

- Extend esplanade reserves into upper catchment area.



P14 - Bush edge between upper tributaries of the Cochrane Stream (refer Fig 1)

---

## 6.0 SUMMARY

### 6.1 Vegetation

The vegetation in the Oratia Structure Plan area strongly reflects the historical clearance and land use of the local area.

Most of the significant vegetation in the area was initially milled and then cleared between the late 1840s and 1870s. Since this time the area has been used for various agricultural and horticultural pursuits. The area developed as a significant fruit producing area for Auckland reaching its heyday in the 1960s and 70s.

Today there is limited grazing and many of the orchards and vineyards are abandoned, however the remnant shelter belts and large pine and poplar trees throughout much of the area serve as reminders of the intensive horticultural use of the area.

Many tracts of land previously cleared of vegetation, which have proved unsuitable for agricultural or horticultural pursuits, have over the years been left to revert back into bush. The rich mosaic of variable aged stands of mixed composition reflects this intermittent abandonment, different landuse regimes and the variable growth conditions in the catchment.

The vegetation in the Oratia Structure Plan area is generally characterised as a mixture of exotic and indigenous vegetation. The exotic vegetation is generally associated with productive landuse and although increasingly redundant in terms of its intended use adds considerably to the landscape character of the catchment area. Native vegetation is however dominant, with some large reasonably continuous stands, albeit somewhat fragmented. This vegetation is characterised by successional or regenerating forest or scrub which is quite variable in terms of age and composition, though relatively weed free in many areas and with good potential for successful natural regeneration aided by appropriate management techniques and protection. The main vegetation associations are kanuka dominated, ranging from scrub to mature kanuka forest which is often associated with successional kauri, and often various podocarp species, and podocarps mixed with smaller broadleaf trees and shrubs.

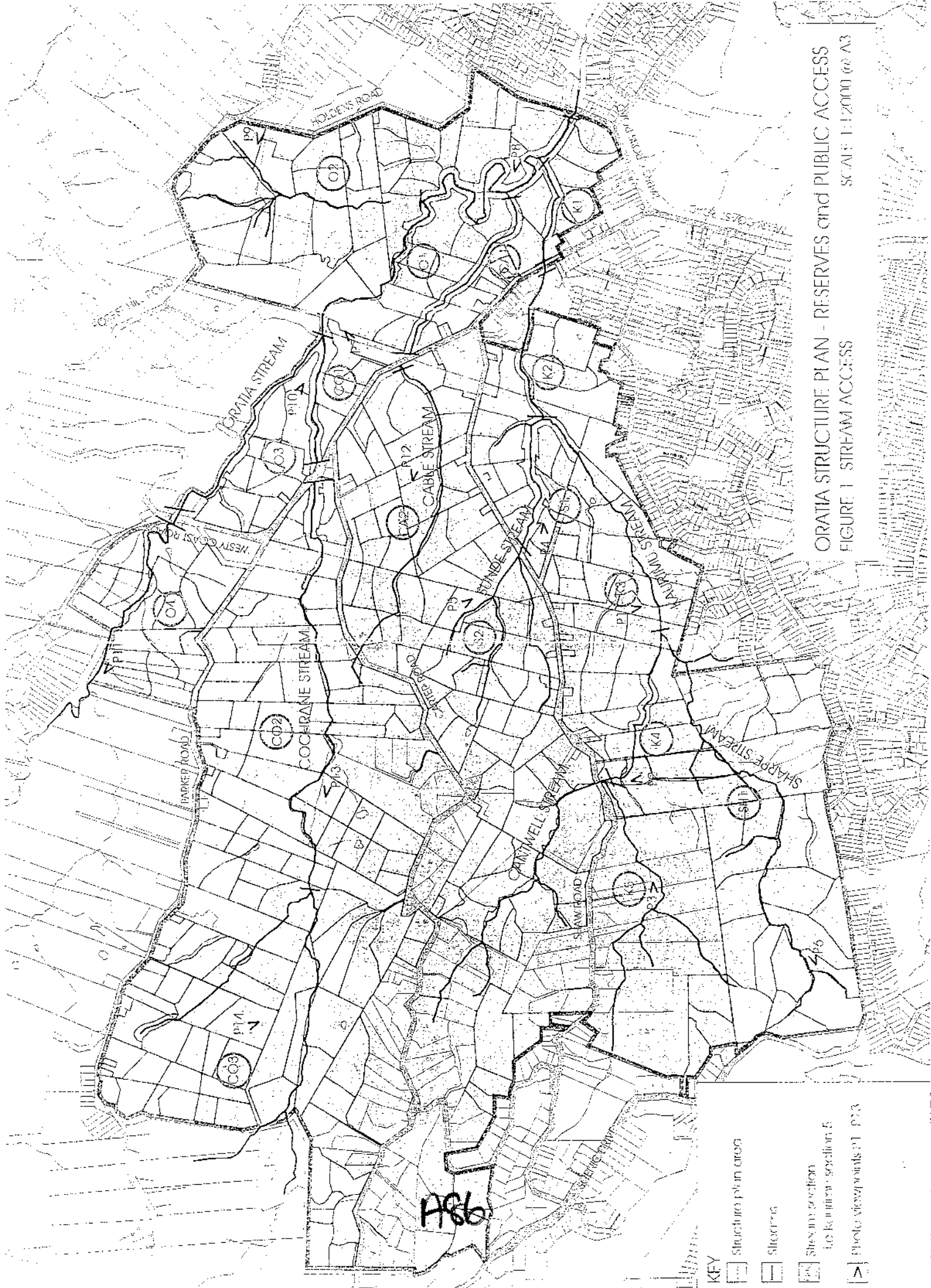
### 6.2 Streams

As with the local vegetation, many of the natural watercourses, particularly those associated with the horticultural land have been modified to various degrees over the years. The level of modification ranges from piping and filling of gullies and straightening and reforming as drainage channels, to more subtle changes that result just from the removal of the natural cover. Those which flow through bush with little modification remain quite wide and of natural form right up to the upper catchment areas.

Regardless of modification the streams vary considerably in size and appearance throughout the catchment area. In some parts of the lower catchment the stream is wide, relatively deep and slowly flowing. Within the bush areas the narrow incised rock channels contrast with wide shallow stoney segments and deep localised pools associated with rock cascades and waterfalls.

### 6.3 Access

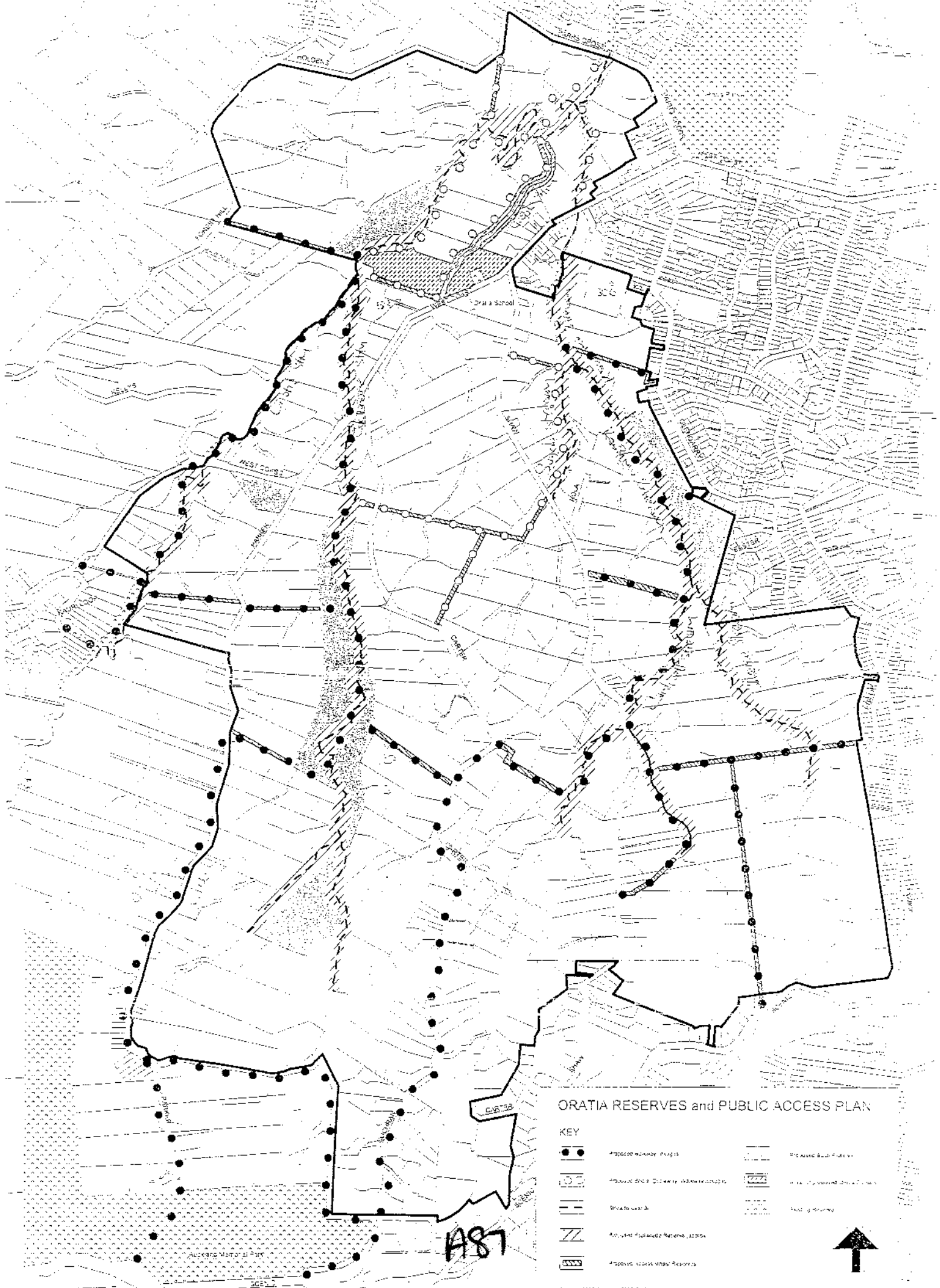
Currently, access through the catchment area is very restricted due to most of the land being under private ownership. Future acquisition of reserve land provides the potential for a comprehensive walkway network through a significant part of the Structure Plan area. Impediments to future access centre mainly on the ability to obtain the land for necessary linkages and physical restraints such as existing vegetation, topography and watercourses.



ORATIA STRUCTURE PLAN - RESERVES and PUBLIC ACCESS  
 FIGURE 1 - STREAM ACCESS  
 SCALE: 1:12000 (to A3)

- KEY**
- Structure plot area
  - Stream reserve
  - Stream location  
to Kaunua-oyallan 5
  - Public access points P1 - P13

A86



ORATIA RESERVES and PUBLIC ACCESS PLAN

| KEY |  |
|-----|--|
|     | Proposed Mainway Paths                     |
|     | Proposed Shared Cycleway/ Walkway/ Runways |
|     | Existing Mainway                           |
|     | Proposed Footpaths/ Reserves/ Zones        |
|     | Proposed Access/ Way/ Reserves             |
|     | Proposed Shared Paths                      |
|     | Area of Proposed Shared Paths              |
|     | Path of Shared                             |



## Appendix 3

### First Round Submissions following Open day 10<sup>th</sup> May 2003 and Mail Out

|   | Name                                       | Address   | Issue   | Action  |
|---|--|---|---|---|
| 1 | Paul Stacey                                | 84 Parker Rd, Oratia  | <p><b>Opposes</b></p> <ul style="list-style-type: none"> <li>-lack of consultation and detail</li> <li>-plan misleading (all existing bush not shown)</li> <li>-privacy</li> <li>-own land too narrow for mitigation, affect r.o.w</li> <li>-property values reduced</li> <li>-2 links to Cochrane Stm from Parker access &lt;800m stm</li> <li>-Shaw Rd 4 walkways to one stream</li> <li><b>-prefer</b> facilities pony club/scouts</li> </ul>  | Further round of consultation held and walkway network reduced. |
| 2 | Craig & Shona Stacey                       | 56 Parker Rd, Oratia  | <p><b>Opposes</b></p> <ul style="list-style-type: none"> <li>-lack of consultation and detail</li> <li>- conflict natural values and public access</li> <li>-fencing mitigation</li> <li>-erosion water quality</li> <li>-parking and access</li> <li>-security</li> </ul>  | Further consultation held.                                      |
| 3 | Gordon E Stacey                            | 42-50 Parker Rd, Oratia<br>(Postal 147 Waikoukou Valley Rd, Rd 2 Waimauku | <p><b>Opposes</b></p> <ul style="list-style-type: none"> <li>-lack of consultation and detail</li> <li>-conflict natural values and public access</li> <li>-bridle trail shown on dangerous roads</li> <li>-OSP wrongly classifies land (should be as in Version Dec 1998 3.2) land is open space</li> <li>-privacy security</li> <li>-reduces options for subdivision(cooperation with neighbours)</li> <li><b>-prefer</b> facilities pony club/scouts, tennis courts, skateboard</li> <li>-continue consultation</li> </ul> | Plan amended and further consultation held.                     |
| 4 | Lance Sunde                                | 8 Shaw Rd, Oratia   | <p><b>Objects</b> to walkways away from streams (weeds)</p> <p><b>Opposes</b> bridle trail for same reason</p>  | Bridle trail removed.   |
| 5 | Michael & Joan Marra                       | 115-121 Shaw Rd, Oratia   | <p><b>Opposes</b></p> <ul style="list-style-type: none"> <li>-not able to be further subdivided</li> <li>-stream (Cantwell) not 3m</li> <li>-see proposal as response to inadequate reserve provision in adjacent suburban areas.</li> </ul> <p><b>Wish to be heard</b><br/><b>wcc please provide report showing stm &gt;3m</b></p>   | Proposed esplanade reserve removed.                             |
| 6 | Dr Michelle Williams & Dr Reinhard Eckloff | 105-113 Shaw Rd, Oratia   | <p><b>Opposes</b></p> <ul style="list-style-type: none"> <li>-property and privacy impacts</li> <li>-perceived compulsory purchase</li> <li>-esplanade reserve not taken when 97 Shaw subdivided 3 yrs ago. Why?</li> <li>-stream not wide enough (<b>130 Shaw less</b></li> </ul>  | Proposed esplanade reserve removed.                             |

AGB

|    |                            |  |   |   |
|----|----------------------------|--|---|---|
|    |                            |  | <p><b>3m)</b><br/>           -conflict natural values and public access<br/>           - walkways not needed (Watakeres)<br/>           -Prefer footpaths<br/>           -Wish to speak, be informed, written reply</p>   |   |
| 7  | Brian Hoffmann             | 51 Carter Rd, Oratia                         | <p><b>Opposes</b> particularly alongside northern boundary or existing stream<br/>           -prefer footpaths<br/>           -numerous existing walkways within 5km erosion parking re bridle trails.<br/> <b>No go project</b></p>  | Esplanade reserve kept.                                   |
| 8  | Val Lyon                   | 175 Parker Rd, Oratia                        | <p><b>Supports</b> esplanade reserve<br/> <b>Concerned</b> re compulsory purchase<br/>           - bridle trail not feasible (unless in esplanade reserve)<br/> <b>-Prefer</b> footpaths<br/>           -Carter and Parker Roads connection not possible due to terrain</p> | Bridle trail removed.                                     |
| 9  | Graham & Ailsa Dickey      | 650 West Coast Rd                            | <p><b>Opposes</b><br/>           -not intending to subdivide (5acre)<br/>           -loss of privacy, freedom, dogs<br/>           -affect reveg and planting already carried out<br/> <b>-prefer</b> footpaths (West Coast Road)</p>                                       | Proposed esplanade reserve removed from plan.             |
| 10 | Richard & Jennifer Bearman | 646 West Coast Road                          | <p><b>Opposes</b>(as pertains to their property)<br/>           -instability of streambanks<br/>           -no room for walkway<br/>           -security, dogs, disease<br/> <b>(looks to small to subdivide SB)</b></p>  | Proposed esplanade reserve and walkway removed from plan. |
| 11 | RG Lindsay                 | 53 Parker Road, Oratia                       | <p><b>Opposes</b><br/>           -lack of consultation<br/>           -contradicts structure plan<br/>           -loss of privacy<br/>           -objects to reserve contribution<br/>           -more consultation with relevant individuals</p>                           |   |
| 12 | Brendan Thacker            | 180 Carter Rd, Oratia                        | <p><b>Opposes</b> walkway-private land<br/> <b>Prefer</b> footpaths Carter, Parker, Shaw Roads<br/> <b>Pro</b> domain (if not compulsory purchase)</p>  |   |
| 13 | L Parkin                   | 84 Carter Rd, Oratia                         | <p><b>Opposes</b><br/>           -intrusive and undesirable<br/>           -cost to meet safety standards in difficult terrain<br/>           prefer footpaths</p>  |   |
| 14 | J Garelja                  | 551-561 West Coast Rd                        | <p><b>Opposes</b><br/>           -perceived compulsory purchase<br/>           -bridle trail waste of money<br/>           -prefer footpaths<br/>           -bush areas incorrect</p>   |   |
| 15 | Sue Pirie                  | 4 Brandon Rd Glen Eden (purchased Parker Rd) | <p><b>Supports</b> bridle trail Parker Carter<br/>           -combine walkway and bridle trail for efficiency<br/>           -paper road connection too steep?sb</p>  |   |
| 16 | JP Marinovich              | 22-30 Carter Rd, Oratia                      | <p><b>Opposes</b> bridle paths<br/>           -to allow for commercial horse trekking</p>   |   |

A89

|    |                       |                         |   |
|----|-----------------------|-------------------------|---|
| 17 | MM Marinovich         | 20-33 Carter Rd, Oratia | <p><b>Opposes</b> bridle path through privately owned land</p> <ul style="list-style-type: none"> <li>-walkways ok provided landowners agreeable</li> <li>-Proposed reserve(domain) ok if market rate paid</li> <li>-keep existing reserve (not clutter with buildings or lease)</li> <li>-maintain areas significant native vegetation</li> </ul>      |
| 18 | Pierre & Jane Kordina | 82 Parker Rd, Oratia    | <p><b>Concerns</b></p> <ul style="list-style-type: none"> <li>-vagueness of plan, lack of detail</li> <li>-parking re bridle trail</li> <li>-safety -free roaming children threatened by public access</li> </ul>   |
| 19 | Peter Garelja         | 553 West Coast Road     | <p><b>Opposes</b> domain particularly (family land)</p> <ul style="list-style-type: none"> <li>-not convinced of need(have Parrs, School, ranges)</li> <li>-lack of consultation/disenfranchised/disrespectful</li> <li>-loss of future earnings, potential</li> <li>-loss of property value</li> <li>-restrictions on rights to use of land</li> </ul> |
| 20 | Murray & Penny Firth  | 48 Carter Rd, Oratia    | <p><b>Opposes</b></p> <ul style="list-style-type: none"> <li>-loss of privacy, safety</li> <li>-already in Waitakere Ranges</li> <li>-damage by dogs and horses</li> <li>-no demand for bridle trails, lots too small for grazing</li> <li>-roads narrow and dangerous</li> <li>-prefer footpaths</li> </ul>  |
| 21 | F & M Botica          | 66 Carter Road Oratia   | <p><b>Opposes</b></p> <ul style="list-style-type: none"> <li>-any walking tracks. Existing tracks in ranges (safety issues)</li> <li>-bridle trails. Use those provided in ranges</li> <li>-damage to environment, health</li> <li>-danger on roads, liability</li> <li>Prefer footpaths</li> </ul>   |
| 22 | RM & LZ Sunde         | 30 Shaw Rd, Oratia      | <p><b>Opposes</b></p> <ul style="list-style-type: none"> <li>-Walkways (loss privacy, value, safety, theft)</li> <li>-fair just price, naming rights for domain land</li> <li>-Bridle trails, (dangerous, damage to land)</li> </ul>  |
| 23 | Peter Dowling         | 783 West Coast Road     | <p><b>Supports</b> (wholehearted support)</p> <ul style="list-style-type: none"> <li>-balance of public space in face of inevitable subdivision (playground)</li> <li>-esplanade areas good for water quality</li> <li>-encourage covenanting where no subdivision</li> </ul>   |
| 24 | Roger and Julia Green | 101 Shaw Rd, Oratia     | <p><b>Opposes</b> (with regard to 101 Shaw Rd)</p> <ul style="list-style-type: none"> <li>-property and privacy impacts</li> <li>-perceived compulsory purchase</li> <li>-esplanade reserve not taken when 97 Shaw subdivided 3 yrs ago. Why?</li> <li>-stream not wide enough (<b>130 Shaw less</b>)</li> </ul>  |

A90

|    |  |   |   |
|----|--|---|---|
|    |  |   | <p><b>3m)</b></p> <ul style="list-style-type: none"> <li>-conflict natural values and public access</li> <li>-walkways not needed (Waitakeres)</li> <li>-object to providing reserve for other suburbs</li> <li>-<b>Prefer</b> footpaths</li> <li>-<b>Wish to speak, be informed, written reply</b></li> </ul>  |
| 25 | Nicolas Hugo Hlawatsch & Anna Jeanette Hlawatsch | 122 Shaw Rd, Oratia                           | <p><b>Opposes</b></p> <ul style="list-style-type: none"> <li>-walkways and reserves</li> <li>-no evidence public want</li> <li>-perceived compulsory purchase</li> <li>-loss privacy, security</li> <li>-conflict with existing use</li> <li>-parking, access</li> <li>-cost affect on rates (cost benefit analysis)</li> <li>existing tracks in Waitakeres adequate</li> <li><b>Wish to speak, be informed, written reply</b></li> </ul> |
| 26 | Brian Glucina                                    | 39 Shaw Rd, Oratia                            | <p><b>Opposes</b></p> <ul style="list-style-type: none"> <li>-enough walkways already</li> <li>-loss privacy, crime</li> <li>-environmental safety (soil copper)</li> </ul>   |
| 27 | Chris Davidson                                   | 66 Parker Rd, Oratia                          | <p><b>Opposes</b></p> <ul style="list-style-type: none"> <li>-enough in ranges</li> <li>-prefer footpaths</li> </ul>  |
| 28 | Roy & Janelle Sunde                              | 138 Carter Rd, Oratia                         | <p><b>Opposes</b></p> <ul style="list-style-type: none"> <li>-perceived compulsory purchase</li> <li>-loss privacy, security, screening, rubbish</li> <li>-loss of value, curtail demand</li> </ul>   |
| 29 | GJ Glucina and Sons                              | 37 Shaw Rd, Oratia                            | <p><b>Opposes</b></p> <ul style="list-style-type: none"> <li>-no demand for bridle trail, weeds, pollution</li> <li>-loss privacy, security,</li> <li>-prefer footpaths</li> </ul>  |
| 30 | HW & MR Van Der Sande                            | 131 Shaw Rd, Oratia                           | <p><b>Supports</b> (with reservations)</p> <ul style="list-style-type: none"> <li>-Council to fence and provide path</li> <li>-damage by public, marijuana</li> <li>-requires discussion</li> <li>-prepared to negotiate at subdivision</li> </ul>  |
| 31 | Grieg Richmond & Margaret Phyllis Barnet         | 130 Shaw Rd, Oratia                           | <p><b>Opposes</b></p> <ul style="list-style-type: none"> <li>-enough tracks in Waitakere Ranges</li> <li>-loss sanctity, security</li> <li>-prefer footpaths</li> </ul>   |
| 32 | G & C Glucina                                    | 49 Carter Rd Oratia                           | <p><b>Opposes</b></p> <ul style="list-style-type: none"> <li>-Roads narrow, terrain unsuitable for bridle path</li> <li>-pollution, weeds</li> <li>-not required no horses</li> <li>-Weeds and pollution public access</li> <li>-loss privacy, security</li> <li>Prefer footpaths</li> </ul>  |
| 33 | Ross & Diane Bates                               | 47 Autumn Ave, Oratia                         | <p><b>Opposes</b></p> <ul style="list-style-type: none"> <li>-not subdividable 1.4ha</li> <li>-lack of care of existing reserves</li> </ul>   |
| 34 | D & Ca Foiwell & Fam                             | Lot 1DP56541, Allotment 4 Parish of Waikomiti | <p><b>Opposes</b></p> <ul style="list-style-type: none"> <li>-not subdividable</li> <li>-unsuitable site</li> <li>-Loss privacy, security, property value</li> <li>-Lack of consultation</li> </ul>   |
| 35 | David & Helen Jenner                             | 198 Carter Rd, Oratia                         | <p><b>Supports - development of domain</b></p>  |

A91

|    |  |                                |   |
|----|--|--------------------------------|---|
| 36 | The Resident                                 | 7-31 Parker Rd,<br>Oratia      | <p><b>Opposes</b>- public walkways<br/>-loss of privacy<br/>-perceived compulsory purchase</p> <p><b>Opposes</b><br/>-natural reveg sufficient<br/>-no horses,erosion etc<br/>-previous reserves sold off<br/>-prefer footpaths, safer roading</p>  |
| 37 | Geoff Davidson                               | 64/66 Parker Rd,<br>Oratia     | <p><b>Concern</b> over impact own property<br/>-should be able to subdivide as intensely as others<br/>-prepared to discuss<br/>-more detail<br/>-prefer land SE corner OSP area for reserve</p>  |
| 38 | The Fasher Family                            | 642 West Coast Road,<br>Oratia | <p><b>Opposes</b>-walkway along Oratia Stm<br/>-trespass, theft, dogs<br/>-regular flooding of stream</p>   |
| 39 | M Stacy                                      | 84 Parker Rd, Oratia           | <p><b>Opposes</b><br/>-enough walking tracks in Waitakeres<br/>-more in countryside is intrusive<br/>-Prefer footpaths by existing roads</p>  |
| 40 | Victor Glucina                               | 40 Shaw Rd, Oratia             | <p><b>Opposes</b>- horse trails &amp;walkways<br/>-loss of privacy<br/>-destruction of land<br/>-already tracks in Waitakere Ranges</p>   |
| 41 | RL &RG Malam<br>RL & BR Malam<br>BM &DB Wood | 24-28-40 Parker Road, Oratia   | <p><b>Opposes</b><br/>-land not suitable for walkways, bridle trails(topography, erosion, loss of trees)<br/>-walkways, rubbish, dogs, trespass, theft, toilets,parking, pollution<br/>-understands stream not wide enough</p>                      |
| 42 | Scott & Tracey Murray                        | 2/500 West Coast Road, Oratia  | <p><b>Opposes</b>- bridle and walking tracks<br/>-no consideration to landowners, loss of privacy<br/>-rubbish, noise, safety, dope growing, theft, dogs<br/>-enough reserves and bridle paths in Waitakere City</p>                                |
| 43 | Russell William Cash                         | 140 Parker Rd,<br>Oratia       | <p><b>Opposes</b>-arduous on subdividers<br/>-abundance of walks in Waitkeres<br/>-loss of privacy<br/>-tracks Parris Park &amp; West Coast Road well used<br/>-prefer footpaths</p>  |
| 44 | Fay & Paul Swinburn                          | 35 Carter Rd, Oratia           | <p><b>Supports</b> Domain<br/>-Partially support walkways along steams in open areas<br/>-Prefer footpaths up Carter Rd before bridle track<br/>-like to see Parris Park upgraded for passive recreation<br/>-more deciduous trees with natives</p> |
| 45 | Paul Mitchel                                 | 198 Parker Rd,<br>Oratia       | <p><b>Not opposed</b> -sees merit in bridle along paper road upper catchment<br/>-paper road not traversable as shown<br/>-is prepared to negotiate access when subdivides</p>  |

A92

## Appendix 4

### Second Round Submissions following Open day 13<sup>th</sup> March 2004 and Mail Out

|   | Name           | Address  | Issue  | Action   |
|---|----------------|--|--|--|
| 1 | Pat Davis      | 244 Waitemata Drive, Oratia                                  | <b>Opposes</b> the use of ratepayer funds for the purchase of reserve land.  |  |
| 2 | Tim Sherrins   | 77A Cater Road, Oratia                                       | <b>Supports</b> walkways alongside streams. Concerned that there are no safe footpaths alongside roads to access walkways. Without footpaths will need car parks at walkway entrance as currently unsafe to walk along road.   |  |
| 3 | B & N Birchall | 92 Carter Road, Oratia                                       | <b>Supports</b> Oratia Domain. Currently not enough walkways in Oratia. Footpaths needed along roads. Reserves offer opportunity for community working bees. Speed control of cars an issue along roads. The paper road connecting Cochran Rd and Scenic Drive offers opportunity for walkway.   |  |
| 4 | S Marsden      | 14 Cochran Road, Oratia                                      | <b>Comment</b><br>Need to reinstate walkway at end of Cochran Rd to North Way along the paper road.  | Plan amended to include future walkways along paper roads. |
| 5 | Gary Stone     | 96 Parker Road, Oratia                                       | <b>Supports</b> Oratia Domain. Would like a public Tennis Court on Domain.   |  |
| 6 | Bryan Trenwith | 671 West Coast Rd Oratia                                     | <b>Comment</b><br>Erosion of stream banks is a problem and until revegetation and weed control occurs, esplanade reserves and walkways will not be possible.   |  |
| 7 | J.C. Whittaker | 6B The Esplanade, Paradise Point, Queensland 4216, Australia | <b>Opposed to</b> the Proposed Reserves and Public Access Plan. The need for the plan has not been established. Sections 5, 21 and 32 of the RMA have not been complied with. Proposed plan is in contempt of Environment Court deliberations for the Oratia Structure Plan. A proposal to purchase reserve land has not been made. Supports walkway from Cochran Rd to Scenic Drive along paper road. |  |
| 8 | Geoffrey Clark | 7 Kelly Road, Oratia   | <b>Supports</b> Oratia Domain.   |  |

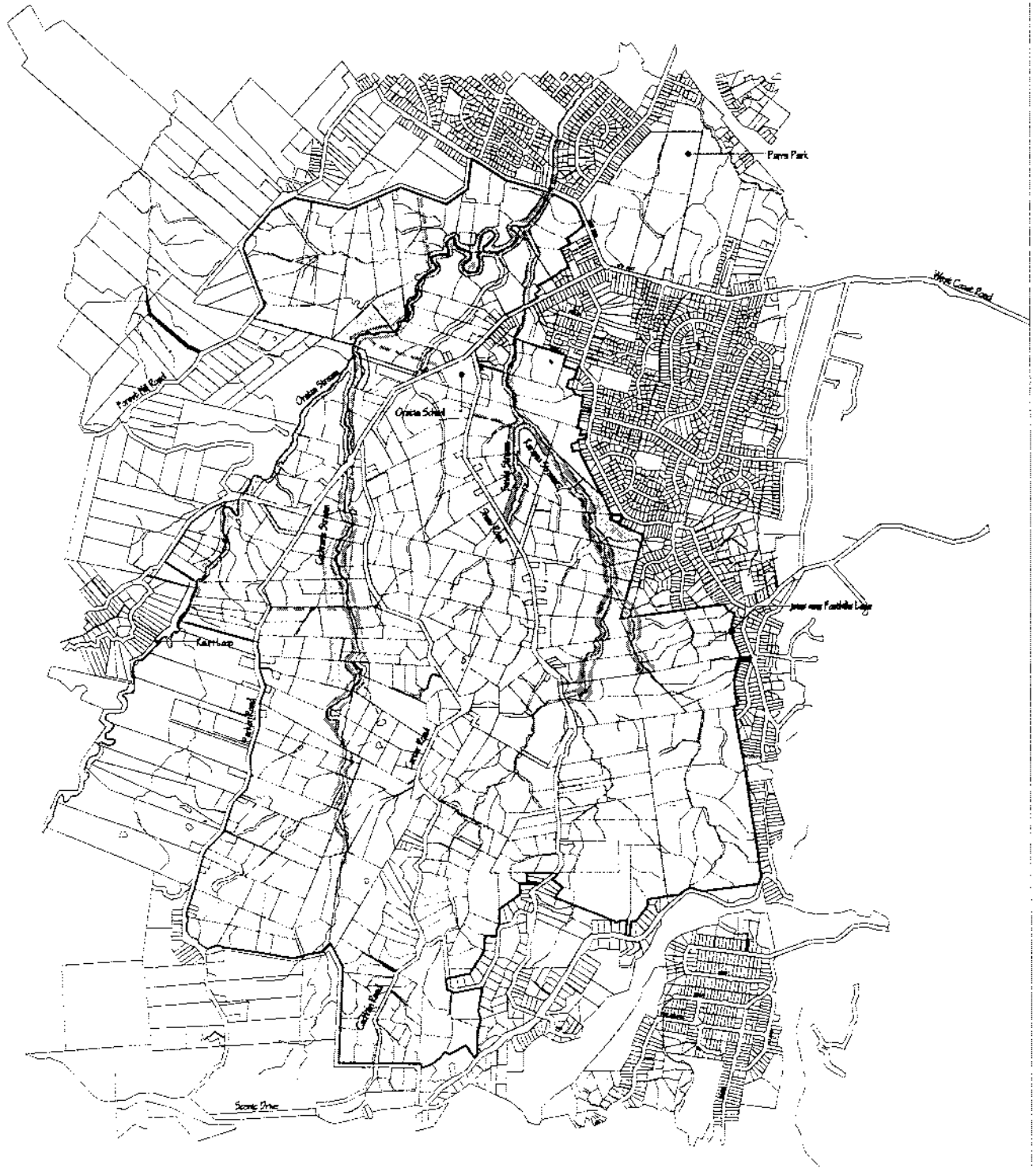
A93

|    |                           |                             |   |  |
|----|---------------------------|-----------------------------|---|--|
| 9  | David Whittaker           | 109 Carter Road, Oratia     | <b>Opposes</b> the Proposed Reserves and Public Access Plan. Would like to see public footpaths/ cyclepaths along the public roads. Supports submission number 7.   | Transport Assets advised.  |
| 10 | Geoff Davidson            | 64 Parker Road, Oratia      | <b>Supports</b> Oratia Domain, however a better location would be adjacent to the Oratia District School and behind the store. The most attractive property already in a Park like condition is the 'La Rosa' block.  |  |
| 11 | R.M. & L Sunde            | 30 Shaw Road, Oratia        | <b>Opposes</b> walkway through their own property from Kaurimu Stream to Shaw Road.<br><b>Supports</b> a walkway along Kaurimu Stream to West Coast Road.   | Proposed walkway along property boundary remains but future link also indicated along Kaurimu Stream to West Coast Road. |
| 12 | Anne D Walters            | 73 Carter Road, Oratia      | <b>Opposes</b> reserve areas adjoining Cochran Stream. Allowing public access to esplanade reserves will encourage unlawful activities, will not be safe for adjacent landowners, and walkways alongside streams will damage unique flora and fauna.  |  |
| 13 | Russell W Gash            | 140 Parker Road, Oratia     | <b>Supports</b> the Oratia Domain.<br><b>Comment</b><br>Believes the area already has enough walkways including Parrs Park walkways, those at Arataki, and in the Waitakere Ranges. Areas of significant vegetation are already abundant throughout the Waitakere Ranges. Concerned about landowner of proposed Oratia Domain receiving adequate compensation.  |  |
| 14 | Rick and Jennifer Bearman | 646 West Coast Road Oratia  | <b>Opposes</b><br>Do not support walkway around their property. Streambanks are fragile and erosion currently major problem.  | Proposed esplanade reserve and walkway removed from property as no further subdivision potential.                        |
| 15 | Dave Harre                | 527 West Coast Road, Oratia | <b>Supports</b> Proposed Reserves and Public Access Plan. Bush protection should be in place 500m either side of the esplanade reserves. There needs to be design criteria covering structures, uses and earthworks within the entire Oratia Valley. The design criteria should incorporate heritage features including natural heritage and landform. Walkways need to connect streams as well as Heritage features. The walkway process needs to involve adjacent landowners to progress past the "its ours" concept of ownership |  |

|    |                            |   |   |   |
|----|----------------------------|---|---|---|
|    |                            |   | inherited from colonial past.<br>Supports passive recreation and walkways.  |   |
| 16 | Mike & Joan Marra          | 121 Shaw Road, Oratia                     | <b>Supports</b> proposed Domain.<br><b>Supports</b> Proposed Reserves and Public Access Plan.   |   |
| 17 | G.E. Stacey and R.L. Malam | 147 Waikoukou Valley Road, RD2, Waimauku  | <b>Opposes</b><br>A walkway from Cochran Stream to Parker Road bounding 40 and 50 Parker Road is unnecessary. It will be dangerous for the walkway to cross private access roads. Opposes walkway down the boundary as there are safety concerns. Proposed walkway will affect location of access roads detrimentally. The 350m long walkway between their properties is unnecessary in completing the walkway circuit. | Proposed walkway along boundary between 40 and 50 kept but possible future link also included to link paper road to Cochran stream to provide alternative to this connection. |
| 18 | P.G. Stacey                | 84 Parker Road, Oratia                    | <b>Opposes</b><br>The proposed walkway link compromises road access for development plans.<br>Supports submission number 18.  |   |
| 19 | G.R & M.P Barnett          | 130 Shaw Road, Oratia                     | <b>Opposes</b><br>Does not support walkways in Oratia on private land. Would like to see footpaths on public roads instead.   |   |
| 20 | Roy & Janelle Sunde        | 138 Carter Road, Oratia                   | <b>Opposes</b> walkways through private property because land values would fall and properties would be less desirable. Supports the development of footpaths along public roads. At present walking along the road is too dangerous. Opposes walkways along Kaurimu Stream and any public access on private property.  |   |
| 21 | C A Stacey                 | 56 Parker Road                            | <b>Opposes</b> proposed Bush reserve on rear of property. Proposed bush reserve is mostly scrub and pines. Also supports submission number 18.  | Proposed bush reserve removed.  |
| 22 | Cal Greer                  | Oratia District School, Shaw Road, Oratia | <b>Supports</b> the Oratia Domain which would provide flat open recreational space for the community to use. The domain would complement the school and Settlers Hall as a hub for community activities.  |   |
| 23 | Glenys Taylor              | 38 Rimu Road, Oratia                      | <b>Supports</b> the proposal for Oratia Domain. The users of the school and kindergarten would benefit greatly from extra land for activities. Guides, Rangers and Scouts regularly use the Settlers Hall and would benefit from a Domain for outdoor activities.   |   |

- |    |   |                                 |  |
|----|---|---------------------------------|--|
| 24 | Russel &<br>Jocelyn<br>McAlpine   | 161 Shaw<br>Road, Oratia        | <b>Supports</b> the proposal for Oratia Domain adjacent to the Settlers Hall. Groups using the Settlers Hall and the school would benefit from the reserve.  |
| 25 | Val Lyon  | 175 Parker<br>Road, Oratia      | <b>Supports</b> acquiring a local reserve for Oratia. Council should consider purchasing land between Oratia Settlers Hall and Knock na Gree. This part of Oratia is the 'heart' and is of historical significance and would tie the Settlers hall and the School.   |
| 26 | Fiona<br>Drummond   | PO Box<br>60209,<br>Titrangi    | <b>Supports</b> Revised Oratia Reserves and Public Access Plan and the proposed Oratia Domain. The proposed site is ideally situated adjacent to the Settlers Hall, across from the School, near the kindergarten, playgroup and dairy. This area will be ideal for passive recreation and in time will have seating and a play area for children. Supports the accessway for joggers and walkers to access the proposed walkway network.  |
| 27 | Jan Brown   | 236A Scenic<br>Drive, Titirangi | <b>Supports</b> the proposed walkways. <b>Supports</b> the Oratia Domain. Oratia is a strong community and would like to see a small village type Commercial development near the school on opposite site of the Settlers Hall with cafes and shops. When people shop and meet at a local community area there is a feeling of wellbeing and being a part of a community.  |
| 28 | S A<br>Marsden,<br>The<br>Secretary,<br>Oratia<br>Residents<br>and<br>Ratepayers<br>Association | 180 Parker<br>Road              | <b>Supports</b> Oratia Domain and walkways. Oratia has traffic problems around the Oratia School and Oratia Settlers Hall during community and school events. Request that Council consider the purchase of extra land for parking to serve this area including future walking tracks and possible future playground at proposed Oratia Domain. Would like to this this part of Oratia turned into a village with an art gallery and café. |





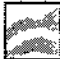

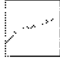

# Revised Oratia Reserves and Public Access Plan



Plan is indicative only, do not scale.

scale 1:20,000 @ A3  
9th March 2004

KEY

|  |   |   |   |
|--|---|---|---|
|  Streets                     |  Existing Reserve Areas          |  Proposed Bush Reserve |  Existing Accessways |
|  Potential Esplanade Reserve |  Proposed Area for Oratia Domain |  Proposed Walkways     |  Area of Study       |



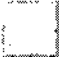



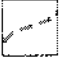
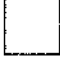


A97

# Final Oratia Reserves and Public Access Plan



Plan is Indicative only do not scale.

**KEY**

|   |   |   |  |
|---|---|---|--|
|  Streams                       |  Existing Reserve Areas          |  Proposed Bush Reserve |  Existing Accessway |
|  Potential Exploratory Reserve |  Proposed Area for Oratia Domain |  Proposed Walkway      |  Area of Study      |
|   |  Possible Future Link            |  Paper Road            |  |

scale 1:20,000 @ A5  
30 June 2004

## Appendix 7

### SUMMARY OF CONSULTATION for ORATIA RESERVES & PUBLIC ACCESS PLAN

#### RESERVES AND PUBLIC ACCESS REPORT 2001

##### 2001

- Plan produced as part of a report on reserves and public access commissioned by Council
- Informal consultation/feedback with user groups
- Plan identified through structure plan notices to Oratia Structure Plan residents.

#### RESERVES AND PUBLIC ACCESS PLAN INITIAL INVESTIGATION

##### 2003

- April – Plan publicly notified for submissions
- 15<sup>th</sup> April - 700 Flyers/freepost submission forms to all Oratia residents
- 10<sup>th</sup> May - Open Day Oratia Settlers Hall Saturday 10am -3pm - attended by 58 people
- 1<sup>st</sup> Aug - Submissions close
- 41 submissions received

#### REVISED RESERVES AND PUBLIC ACCESS PLAN

##### 2003

- 04<sup>th</sup> Nov - Letter to all submitters outlining amendments and process
- 13<sup>th</sup> Nov - Plan introduced at Oratia meeting for Waitakere Ranges consultation

##### 2004

- Presentation to Oratia Residents and Ratepayers Committee Meeting
- 18<sup>th</sup> Feb - 700 Flyers/freepost submission forms to all Oratia residents and submitters mailing list
- 20<sup>th</sup> Feb - Plan publicly notified for submissions
- 13<sup>th</sup> March - Open day Oratia Settlers Hall Saturday 10am -2pm - attended by 69 people
- 22<sup>nd</sup> March - Submissions close
- 28 submissions received

#### FINAL RESERVES AND PUBLIC ACCESS PLAN

##### 2004

- To City Development Committee