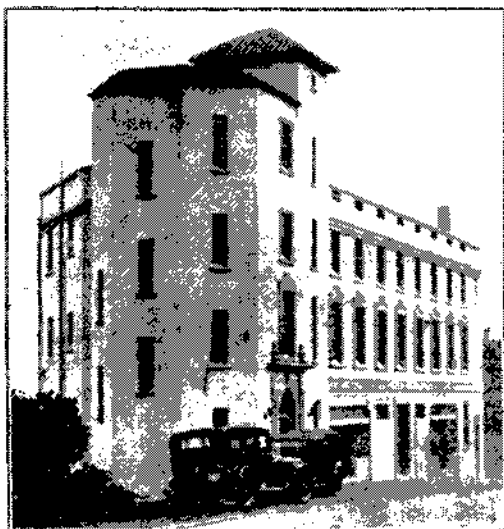


# Lopdell House Gallery

Annual Report  
June 30<sup>th</sup> 2004-June 30<sup>th</sup> 2005



418 Titirangi Road  
Titirangi

## Contents

1. Overview from Chair's Report AGM 2005
2. Building Maintenance
3. Road Frontage
4. Visitor Attendance
5. Education Statistics
6. Exhibitions
7. Promotion and Publicity
8. Community Involvement
9. Financial Report
10. Funding and Service Agreement Performance  
Targets
11. Appendix: School Evaluation Figures

### **Overview-From Chair's Report AGM 2005**

The Society's thanks go to Waitakere City Council for its continued financial support; without which there would be no gallery. Over the last year Lopdell House Gallery has grown in stature and in professionalism to provide an accessible and stimulating centre for the arts both within Waitakere and to the wider community. This is in no small part due to the dedication and enthusiasm of volunteer staff who give so freely of their time to bring the message of our regional art gallery to our many visitors; visitors who are local, national and international.

We've seen a good variety of both new and touring exhibitions this year and continue to foster relationships with other regional galleries and the local art community. From Whangarei Art Museum we received *Shade House*, a multi media installation conceived by Maureen Lander in collaboration with poets Briar Wood and Robert Sullivan, timed to coincide with the City's literary festival. The McNamara Gallery brought us *Bruce Connew's Muttonbirds - part of a story*, a photographic record of muttonbirding on an island off the southwest coast of Stewart Island. Visitor numbers for this exhibition were 4006.

*Background Landscapes* was a popular exhibition curated by Amanda Wayers that incorporated a number of well known Waitakere based artists including Mark Adams, Derek March, Michael Hight and Peter Siddell. Visitor numbers for this exhibition reached 4223.

Lopdell House Gallery is privileged to host New Zealand's premier ceramics event - The Portage Ceramic Awards. This is invariably our most successful exhibition, fitting, as it does, so very well with Titirangi's unique heritage. Attracting artists from all parts of New Zealand the event deservedly receives intense national media interest. With continued support from naming sponsor, The Portage Licensing Trust, we look forward to keeping the event buzzing and to supporting the national ceramics community. This year the Portage Ceramic Awards attracted 4178 visitors.

Matariki has become a fixture on Lopdell's calendar and last year we celebrated with a touching opening ceremony that included wonderful singing and a marvelously powerful Kapa Haka from Hoani Waititi for Natalie Robinson's and Aroha Chaplow's exhibition. This year Mayor Bob Harvey was invited to open Nga Maunga Toi O Matariki with Riki Bennett playing flute. This year's fresh and lively exhibition showcased three senior contemporary Maori artists and two emerging Maori women artists.

A collaboration between local ceramicist and theatre set designer John Parker and performance artist Helen Grant, produced a theatrical spectacle for this years Art on the Beach an event that attracted several hundred spectators, far exceeding previous years. The event was well documented with film and a photo essay. The traditional fun with sand sculptures was not neglected being enjoyed by families in the earlier part of the evening but, as the sun set and the moon rose with pounding surf and the majesty of Lion Rock as a backdrop, the spectacle of the performance unfolded.

This past year the committee commissioned a review of the operation of Lopdell House Gallery. The review was conducted with the aim of looking towards the future. During the process all key positions were reviewed to ensure that all responsibilities and accountabilities were assigned correctly to support the vital future developments of the gallery, as articulated in our one and five year goals. The review was also conducted to be in keeping with recently approved Waitakere City Council's Arts and Cultural Strategy. The team at Lopdell House Gallery were involved in the process. We are grateful to them for their role in helping to create the new operating model and redefining responsibilities into the new positions that were created.

Another factor that influenced the changes was the proposed construction of a new gallery and the refurbishment and earthquake proofing of Lopdell House. This has seen the setting up of a separate development trust known as the Lopdell House Arts Development Trust with representatives from the main users groups of Lopdell House and members of the community and council. Mitchell and Stout, an architectural design company well-known for its expertise both in heritage building restoration and the development of performing and visual arts facilities have been retained as consultants to the trust. In the current financial year, council is funding a feasibility study to test the viability of the concept. This feasibility study will help Lopdell House Gallery to plan out it's course for the coming years, including involvement in the Colin McCahon House artists in residence project and also future development of a ceramics museum in New Lynn and, possibly a writers residency at the Shadbolt house. We are also looking at reintroducing the gallery shop during the coming year. These are immense and exciting challenges for Lopdell House Gallery, challenges that will ensure that the Gallery remains pre-eminent among local art galleries in New Zealand.

In 2004 we said goodbye to Mary Holehan the former Director/Curator. Her contribution to the gallery is greatly appreciated. In September of 2004 we welcomed Terry Manson to the newly created role of director.

The secondary schools art competition is another notable event organized by the gallery with a generous grant from the Portage Licensing Trust for the awards. The Portage Licensing Trust is one of our major sponsors; their commitment to the arts and culture in Waitakere City is sincerely valued by the gallery. Helping to foster young creative talent is one of the primary functions of Lopdell House Gallery. This year our Mayor Bob Harvey has agreed to fund an additional smaller award in this event- the Mayor's Choice Award. Our thanks to the Mayor for his ongoing support of Lopdell House Gallery. The Portage Licensing Trust has also committed to funding CCTV security cameras in the gallery in the new financial year as part of their commitment to the Ceramic Awards 2005.

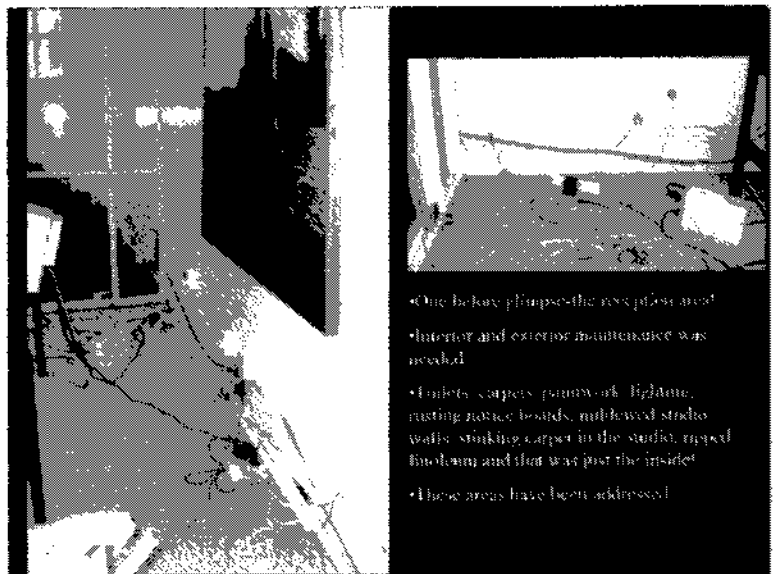
The management committee has been clear in the goals that they have set for the year and have been unanimous in their decision making over this time. They have worked with dedication and with a common sense of purpose for the strong future of Lopdell House Gallery.

*Dan Grieg-Chairman Lopdell House Gallery*

### **Building Maintenance**

Lopdell House has been in need of planned maintenance for many years. In October The Director met with Rex Harland , Head of Waitakere City Council's Property Assets team, to discuss ways this could be addressed. New carpet, painting, cleaning, boxing, flooring are evidence of council's commitment to the building's maintenance. Further work has been committed to and will be carried out in the new financial year.

In the last six months the gallery has had the upstairs toilets and seminar room and staff tea room repainted. Two walls have been removed in the main gallery to open up the window gallery further for display. The studio has been painted, re-carpeted, re-outfitted and had new linoleum laid. Office space has been rationalised to allow the atrium on level one to provide a new exhibition space.



The upgrade of the seminar room and studio has been undertaken as part of the plan to promote more use of these areas. These two areas are potentially an excellent revenue stream for the gallery. This has resulted in greater bookings in the gallery which have more than paid for the minimal cost spent in upgrading these areas.

### New Gallery Space



The new gallery space on level one has been improved by the addition of a large display wall and improved lighting. Since January we have had four different exhibitions in this area:

- The award winning costumes from Trash to Fashion 2004.
- Chris Hault's black and white

panoramic photographs of Waitakere City's beaches in his exhibition A Western Approach.

- Paintings from our 2005 Matariki exhibition Nga Maunga Toi O Matariki.
- Hayden Fritchley's Friendly

This space has yet to be improved by boxing in of fire hoses, completion of the space outside of the seminar room and signage outside the first floor stairwell.

### Road Frontage

In order to improve our street appeal road banners now advertise each exhibition. The council have washed the building façade and we have replaced the rusting notice boards.

The gallery entrance is soon to be relocated to the main stairwell which has recently been painted by the council. New signage both inside and outside and large planters will clarify the gallery entrance for the public.

Evening events will be improved with up-lighting on the building's exterior. The up-lighting is an electrical job previously begun years ago and left unfinished.

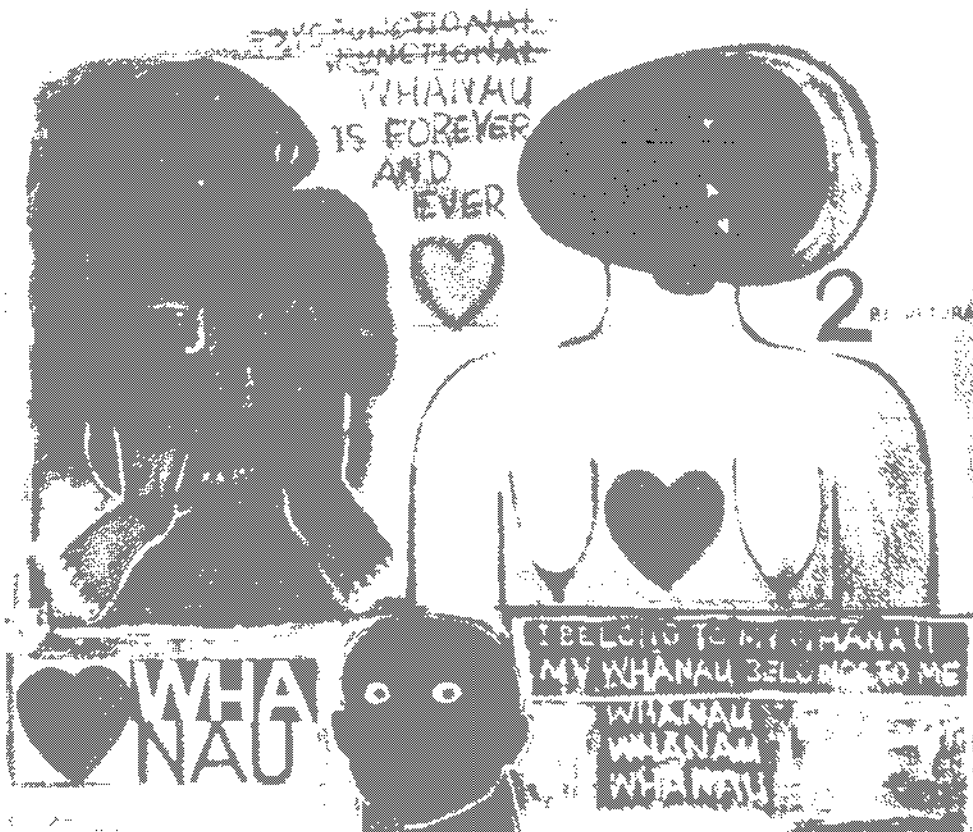
The shop will be reinstated late in 2005 and will be located next to the gallery's new entrance.

### Visitor Attendance

Exhibition attendance is increasing both as a result of our fresh new exhibitions and better coverage in the local media. For the first six months of last year we had an average attendance of 2845 visitors per exhibition. We now average 3987 visitors per exhibition. These figures are based on our last six months of attendance figures:

- 2004 Portage Ceramic Awards: 4178 visitors
- Bruce Connew's Muttonbirds: 4006
- Background/Landscapes: 4223
- McLeod/Taurewa: 3540
- Matariki: 2953

*Robyn Kahukiwa*



### Education Statistics

Total school visitor attendance is increasing. The first 6 months of 2004 saw 1348 school children attending Lopdell Gallery. In May and June alone this year 1073 students visited the gallery on formal school visits.



May 2004 : 164 students

June 2004 : 204 students

July 2004: 6 students

August 2004: 267 students

September 2004: 29 students

October 2004: none

November 2004: 219

December 2004: none

January 2005: none

February 2005: 66 students (Education Manager resigned)

March 2005: 8 students

April 2005: (New Education staff appointed)

May 2005: 649 students

June 2005: 424

Staff are currently working on generic lessons for our education classes and pre and post visit information kits for schools. In 2007 the gallery can apply to the Ministry of Education for funding for our classes. Our aim until we apply is to provide quality classes to schools, build our school visitor numbers significantly and to monitor our school visits with evaluation sheets collected from each class visit.

Every school in the area has been contacted by telephone and staff member Julia Nolan has visited schools to talk at their assemblies and to their art departments. Fresh interest has been engendered in the Secondary School Art Awards by following up last year's winner and having this story appear on the front of the Western Leader. The Mayor has this year agreed to fund and choose a special new "Mayor's Choice" Award for this competition.

School children sketching in the gallery and walking through the two upstairs galleries is now a daily occurrence. This is helping to build the gallery's future audiences.

The gallery is now running classes using three part time teachers, who teach when classes are booked into the gallery. Feedback has been excellent from schools and new schools are now visiting the gallery.

#### Exhibitions: June 2004-June 2005

##### 30<sup>th</sup> June -18<sup>th</sup> July 2004:

**Natalie Robertson**

**Kapokapo (Little Stars)**

Celebrating the Maori New Year this exhibition investigated Maori and Pakeha relationships with the land through navigation, travel and mapping. John Reynolds, Natalie Robertson, Daniel Malone and Jill Leahy all contributed to this exhibition.

**Aroha Chaplow**

**Te Rua Kopito**

This exhibition explored the knowledge passed down through whakapapa and the connections between generations.

Total Attendance: 2195

##### 23<sup>rd</sup> July-29<sup>th</sup> August:

**Susan Jowsey, Leanne Williams & Fiona Lascalles**

**The Pleasure Hunters**

Gardens -homely recreational spaces or measures to control the exotic. These three artists explored collection and colonisation from three different perspectives.

**Peter Deckers                      Greetings from Maoriland**

This exhibition looked at the exchanges, hybrids and fusions that occur when cultures collide. A mixture of installation, sound and jewellery.

**3<sup>rd</sup> September - 3<sup>rd</sup> October 2004:**

**Maureen Lander                      Shade House**

This installation incorporated fern specimens and prints, photography and sound.

**Nancy de Freitas                      Different Directions**

A sound and sculptural installation in collaboration with musician Mark Story and writer Kapka Kassabova.

**10<sup>th</sup> October- December 6<sup>th</sup>**

**Portage Ceramic Awards 2004**

The 2004 national ceramics awards were judged by Australian ceramic artist and lecturer Patsy Hely. A vibrant mix of styles and artists ensured this show was well received. Raewyn Atkinson's prize winning piece Cape Evans II was chosen both for it's skilful technique and beauty.  
Total attendance: 4178

**9<sup>th</sup> December 2004-6th February 2005**

**Bruce Connew                      Muttonbirds-part of a story**

A visual record of Muttonbirding on Stewart Island.

**Penny Ericson                      Collective Memories**

Ceramics from Waiheke Island's Penny Ericson.

**Kate Fitzharris                      A small part of something bigger**

Ceramics, cotton, wool and grain are combined by Kate Fitzharris as she explores and explains her world view of the interconnectedness of life.

Total Attendance: 4006

**10 February - 3 April 2005**

**Background/Landscapes**

Backgrounds are important in paintings, they are not just backdrops for the main event. Peter Siddell, Mary McIntyre, Peter Ireland and others.

Total Attendance: 4223

**7 April - May 22nd**

**McLeod/Taurewa/Hoult**

McLeod's kelp sculptures and brass wall explore his Celtic roots. Loreene

Taurewa's enormous charcoal drawings explore aspects of her family's past also. Chris Hoult's atmospheric photographs of Waitakere City's beaches captured the essence of our wild west coast.

Total Attendance: 3540

**27<sup>th</sup> May - 3rd July**

In celebration of Matariki a dynamic exhibition of paintings, sculpture and jewellery by contemporary Maori artists.

**Nga Maunga Toi O Matariki** a group show by Robyn Kawukiwa, Emily Karaka, James Webster, Priscilla Cowie, Charlotte Graham

**Nga Kanohi O Te Rangi**

## White Foreshore

Alan Preston

Total Attendance: 2953

These exhibitions were supported by a broad range of public programmes which included music, film, drama and poetry.

### **Promotion and Publicity**

This year there has been an increase in our coverage in the local press and on television for Matariki 2005. The Portage Ceramic Awards, Art on the Beach, Chris Hault's Exhibition, our upcoming building project, the Secondary School Art Award, The Artist's Palate, Priscilla Cowie have all been given good coverage.

A quarterly newsletter is sent to our current mailing list of approximately 1400. We hope to have this up to 2000 by the end of 2005. In the next few months this will also be sent out in electronic format. We also have established a broadcast email media directory which contacts 220 national media contacts.

We are currently working on a new brand which will marry with the new gallery extension and our focus on contemporary New Zealand art.

We advertise in Art New Zealand, The Western Leader, Art News, The New Zealand Herald, The Tatler, City Mix, and others. For this year's Portage Ceramic Awards we have included lifestyle magazines such as the Listener and North and South which target the same demographics the gallery does.

Effective publicity is an area we will focus on in the 2005/6 operating year.

### **Community Involvement**

Reaching our local community is important to the public profile of the gallery as they are one of our key stake holders. The monthly Sunday concerts held in the gallery (ably organised by Laurie Ross) are now always sold out.

The Titirangi Music Festival was supported by the gallery and 12 events were held at Lopdell House.

There is now stronger collaboration between the Theatre and TCAC. Returning the Ticket Office to the Theatre was logical. Changing the entrance to the TCAC to make it more accessible to the public has been beneficial to both Lopdell Gallery and TCAC. The joint opening of TCAC exhibitions and Gallery exhibitions has been trialled and proved to be a great success. We hope to dovetail our exhibition schedules in 2006.

Thirteen community groups have contacted the gallery in the last six months wishing to have closer links with the gallery including the Waitakere Tourism group. We hope to have a stronger association with this group when the McCahon House is open to tour groups and our gallery is used for orientation of these groups.

The studio is used by our school groups and by the community for a range of workshops in the evening and weekend. New initiatives have included Drama classes, Music Workshops, Life Drawing classes and Singing classes.



## Financial Report

The Society's accounts are now being audited. Last year we changed the end of our financial year from March to June to bring us into line with the Waitakere City Council's financial year.

The audited accounts will be made available.

## Education Visit Evaluation Form

In line with our service agreement school visits are being evaluated. We have an almost 100% return on these since initiating them this second half of the year. The results are tabled in the Appendix. The statements in the Evaluation Survey are as follows:

1. The students felt welcome and safe.
2. The class was well structured and met our needs.
3. The children gained new practical art making skills.
4. The children gained a better understanding in the visual arts.
5. The children were extended by their learning experience outside the classroom.
6. The children had fun!

The statements require a response as follows:

Strongly disagree	Disagree	Undecided	Agree	Strongly Agree
1	2	3	4	5

Opdell House Gallery - Waitakere City's Regional Art Gallery  
**FUNDING AND SERVICE AGREEMENT BETWEEN LHS & COUNCIL – SCHEDULE 1**

2004/2005

COUNCIL OBJECTIVES	DESCRIPTION OF SERVICES	PERFORMANCE TARGETS 2004/05	
<p>These refer to Council's broad aims for arts and culture for the city.</p> <p>Develop and foster the practice and appreciation of arts and cultural heritage in Waitakere City, through contemporary New Zealand art.</p>	<p>These refer to LHS's contribution to Council's objectives</p> <p>1.1 Present an annual arts programme that reflects the excellence of contemporary art in New Zealand</p>	<p>Performance targets are a measure of LHS's contribution to Council's objectives</p> <ul style="list-style-type: none"> <li>8 main exhibitions accompanied by approximately 8 smaller exhibitions. Total annual attendance by at least 30,000 people. Attendance is recorded at the gallery: daily attendances, openings, school visits, films and events run by LHS at other venues.</li> <li>Number of new visits to the gallery (by annual survey).</li> </ul>	<ul style="list-style-type: none"> <li>These targets met and exceeded</li> <li>Annual Visitor Survey is being undertaken</li> </ul>
<p>1.2 Profile City artists of national significance.</p>	<p>1.2 Profile City artists of national significance.</p>	<ul style="list-style-type: none"> <li>Exhibitions include profiling at least six City artists in significant exhibitions</li> <li>Gallery Talks. Tour of Gallery and talk on current exhibitions. 12 per year.</li> </ul>	<ul style="list-style-type: none"> <li>Six city artists have been profiled</li> <li>This target achieved. Each exhibition opening has been followed by the exhibiting artist(s) talking both to members and the general public. Talks to visiting groups have included senior citizens groups and art teachers.</li> </ul>
<p>1.3 Reflect the bi-cultural commitment of the City.</p>	<p>1.3 Reflect the bi-cultural commitment of the City.</p>	<ul style="list-style-type: none"> <li>Involve Maori artists in at least three main exhibitions or arts events, which reflect Maori culture.</li> </ul>	<ul style="list-style-type: none"> <li>Maori artists have been involved in three major exhibitions and in several minor exhibitions</li> </ul>

<p><b>COUNCIL OBJECTIVES</b> These refer to Council's broad aims for arts and culture for the city</p>	<p><b>DESCRIPTION OF SERVICES</b> These refer to LHS's contribution to Council's objectives</p>	<p><b>PERFORMANCE TARGETS 2004/05</b> Performance targets are a measure of LHS's contribution to Council's objectives</p>
<p>1.4 Present an annual arts programme that reflects/address the cultural diversity of the City.</p>	<p>1.4 Present an annual arts programme that reflects/address the cultural diversity of the City.</p>	<ul style="list-style-type: none"> <li>• Five exhibitions or events which reflect/address the issue of 'cultural diversity'.</li> </ul>
<p>2.1 Encourage cultural tourism through partnerships and joint promotions.</p>	<p>2.1 Encourage cultural tourism through partnerships and joint promotions.</p>	<ul style="list-style-type: none"> <li>• Increased contact and joint ventures with tourist operators.</li> <li>• Partnership promotion with Corban Estate Arts Centre.</li> </ul>
<p>2.2 Actively seek a range of opportunities to promote and market the exhibition and educational programme.</p>	<p>2.2 Actively seek a range of opportunities to promote and market the exhibition and educational programme.</p>	<ul style="list-style-type: none"> <li>• Regular promotion and publicity carried out.</li> <li>• Marketing educational classes to schools carried out at least once a term</li> </ul>
<p>3.1 Create at least one event focussed on youth at secondary schools, alternative schooling and wharekura.</p>	<p>3.1 Create at least one event focussed on youth at secondary schools, alternative schooling and wharekura.</p>	<ul style="list-style-type: none"> <li>• Achieved</li> <li>• Achieved and promoted to schools</li> <li>• Evaluation of school visits is being undertaken and recorded. See Appendix</li> </ul>
<p>3.2 Plan the exhibition programme to support and promote other cultural</p>	<p>3.2 Plan the exhibition programme to support and promote other cultural</p>	<ul style="list-style-type: none"> <li>• Plan and liaise with organisers of significant cultural events when</li> <li>• Going West Books &amp; Writers Festival, Trash to Fashion and Matariki are all</li> </ul>

<p><b>COUNCIL OBJECTIVES</b> These refer to Council's broad aims for arts and culture for the city</p>	<p><b>DESCRIPTION OF SERVICES</b> These refer to LHS's contribution to Council's objectives</p>	<p><b>PERFORMANCE TARGETS 2004/05</b> Performance targets are a measure of LHS's contribution to Council's objectives</p>	<p>supported through the gallery. Pacifica Living Arts Festival is best supported through CEAC and this will be omitted from this performance target for Lopdell House in 2005/6</p>
<p>events in the City, including the Pacifica Living Arts Festival, Going West Books &amp; Writers Festival, Trash to Fashion and Matariki.</p>	<p>Administer an education programme of workshops, classes, forums and lectures for students, other young people and the general public.</p>	<p>Multi-level teaching units linked to each exhibition to be planned and taught throughout the year. Number attending, at least 7,500 annually.</p> <p>Gallery Talks. Tour of Gallery and talk on current exhibitions. 30 per year</p> <p>Studio open days, 12 per year run in conjunction with the Ttirangi Markets and incorporating artists demonstrations and workshops, minimum attendance 250 per annum.</p>	<p>Multi-level teaching units are planned and taught throughout the year. As discussed in the body of the report our education numbers have grown enormously in the second half of this reporting year, but this target has not been met for the whole year.</p> <ul style="list-style-type: none"> <li>• Target achieved</li> <li>• Held for first six months of year.</li> </ul> <p>This target is being reviewed.</p>
<p>Provide an Arts Information Resource available to students and members of the public.</p>	<p>Produce slide archives for all exhibitions and selected events, and make available to the public.</p> <p>Produce at least four exhibition publications or videos subject to external funding.</p> <p>Maintain and update LHS's web-site on the Internet.</p>	<p>Produce slide archives for all exhibitions and selected events, and make available to the public.</p> <p>Produce at least four exhibition publications or videos subject to external funding.</p> <p>Maintain and update LHS's web-site on the Internet.</p>	<p>Slide archives are being replaced with CD archives</p> <ul style="list-style-type: none"> <li>• Target achieved</li> <li>• Target achieved</li> </ul>

<p><b>COUNCIL OBJECTIVES</b> These refer to Council's broad aims for arts and culture for the city.</p>	<p><b>DESCRIPTION OF SERVICES</b> These refer to LHS's contribution to Council's objectives</p>	<p><b>PERFORMANCE TARGETS 2004/05</b> Performance targets are a measure of LHS's contribution to Council's objectives</p>
<p>Support the delivery of arts and services by a range of local providers.</p>	<p>4.1 Act in advisory capacity to Council, assisting with the development of initiatives as mutually agreed.</p>	<ul style="list-style-type: none"> <li>• Advise on and provide valuations of artworks when requested.</li> <li>• Provide professional advice to Council on art projects when mutually agreed upon.</li> <li>• Advisory service still available when needed</li> <li>• Professional advice still available when needed</li> </ul>
<p>To develop and expand Waitakere City's regional gallery – Lopdell House Gallery.</p>	<p>4.2 Communicate with artists, gallery friends, community groups, City Councillors, art institutions, visitor and professional bodies (nationwide).</p>	<ul style="list-style-type: none"> <li>• Quarterly programmes produced and distributed (2000)</li> <li>• Ongoing support and training via artist's talks offered to volunteers</li> </ul>
<p>To develop and expand Waitakere City's regional gallery – Lopdell House Gallery.</p>	<p>5.1 Continue to plan towards the upgrade of Lopdell House Gallery to increase access and extend potential to host touring and other nationally significant exhibitions.</p>	<ul style="list-style-type: none"> <li>• Show an increase in the number of Friends of Lopdell House Society</li> <li>• Gain external funding to support the development of the gallery.</li> <li>• Contribute to the development plan, in partnership with the new Lopdell House Arts Development Trust for the development of the Lopdell House Arts complex.</li> <li>• Investigate opportunities for retail capacity within Gallery premises.</li> <li>• Friends of Lopdell House membership has grown significantly in 2005</li> <li>• Previously achieved</li> <li>• Previously achieved</li> <li>• Plans for the new gallery shop are underway</li> </ul>

<p><b>COUNCIL OBJECTIVES</b> These refer to Council's broad aims for arts and culture for the city</p>	<p><b>DESCRIPTION OF SERVICES</b> These refer to LHS's contribution to Council's objectives</p>	<p><b>PERFORMANCE TARGETS 2004/05</b> Performance targets are a measure of LHS's contribution to Council's objectives</p>
<p>5.2 Continue relationship with McCahon House Trust, with a view to creating and sustaining an artist's residency at McCahon House. This to enhance the development of a national/international status for Lopdell House Gallery.</p>	<ul style="list-style-type: none"> <li>Develop funding proposal to Waitakere City Council March 2005 Annual Plan, via a submission, which will develop the artists residency programme in partnership with McCahon House Trust and other funders.</li> <li>Trustee position for Director.</li> </ul>	<ul style="list-style-type: none"> <li>Funding proposal not presented but ongoing commitment to this project includes office space provided in the gallery offices for McCahon House liaison person and planned McCahon exhibition to promote launch of restored McCahon house</li> <li>Director has trustee position</li> </ul>
<p>5.3 Extend the public/education programme and increase capacity in curating shows.</p>	<ul style="list-style-type: none"> <li>Ten specific programmes aimed at the wider public and distinct from the existing schools education programme.</li> <li>Art on the Beach</li> <li>Investigate partnerships for growing Art on the Beach.</li> </ul>	<ul style="list-style-type: none"> <li>Target achieved</li> <li>Art on the Beach successfully attracted the biggest audience to date this year</li> <li>Partnerships are being investigated</li> </ul>
<p>5.1 Develop and sustain strong relationships with other local, regional and national art bodies (CNZ) and take an active role at a national level within Museum Aotearoa.</p> <p>Act as an advocate for the arts, locally, regionally and nationally.</p>	<ul style="list-style-type: none"> <li>Promote and present ideas at a national/international level through seminars, forums and conferences, as appropriate.</li> <li>Representation on WACDT.</li> <li>Representation on new Lopdell House Arts Development Trust</li> <li>Develop and continue an active working relationship</li> </ul>	<ul style="list-style-type: none"> <li>Institutional membership of Museums Aotearoa, contribution where appropriate</li> <li>Not represented</li> <li>Represented</li> <li>Good working relationship with CEAC</li> <li>Participation in WAN</li> </ul>

<p><b>COUNCIL OBJECTIVES</b> These refer to Council's broad aims for arts and culture for the city</p>	<p><b>DESCRIPTION OF SERVICES</b> These refer to LHS's contribution to Council's objectives</p>	<p><b>PERFORMANCE TARGETS 2004/05</b> Performance targets are a measure of LHS's contribution to Council's objectives</p>
<p>Support the Arts Strategy for the City.</p>	<p>7.1 Provide professional advice to Council on arts strategy and implementation.</p>	<ul style="list-style-type: none"> <li>• Participate in WAN (Waitakere Arts Network)</li> <li>• Provide support and advice on the arts strategy and implementation.</li> <li>• Provided as necessary</li> </ul>
<p>Maintain sound governance procedures in all aspects of LHS activities</p>	<p>8.1 Follow sound governance procedures and take advice on issues as they arise.</p>	<ul style="list-style-type: none"> <li>• Conduct performance reviews on key staff 6 monthly.</li> <li>• Conduct annually an AGM in accordance with the Lopdell House Society Constitution</li> <li>• Use sound management procedures on a daily basis to manage LHS's objectives.</li> <li>• Performance Review material currently being rewritten to reflect new job descriptions</li> <li>• AGM held May 05</li> <li>• Sound management procedures carried out on a day to day basis</li> </ul>
<p>Fiscal Responsibility</p>	<p>9.1 Maximise funding from all sources.</p>	<ul style="list-style-type: none"> <li>• Seek funding support from outside funding sources</li> <li>• Investigate retail opportunities as a source of income.</li> <li>• Use best practice financial management practices and procedures</li> <li>• Funding support sought</li> <li>• Retail opportunities being investigated</li> <li>• Best practice financial management practices implemented and followed</li> </ul>

## EDUCATION EVALUATION REPORT

DATE:	SCHOOL:	PROGRAMME:	LEVEL	ADULT NO:	STUDENT NO:	COMMENTS:
17/03/2005	Peninsula Primary	Draw what u see	4-6	2	20	
18/03/2005	Peninsula Primary	Draw what u see	4-6	3	20	
4/04/2005	Kaurilands School	Clay-face modelling	4-6	5	32	Rm 25
4/04/2005	Kaurilands School	Clay-face modelling	4-6	5	34	Rm25
5/04/2005	Kaurilands School	Clay-face modelling	4-6	5	30	Rm23
5/04/2005	Kaurilands School	Clay-face modelling	4-6	5	33	Rm6
13/04/2005	Kelston Deaf School	Big Drawings & Clay Hands	0-3	3	7	5 5 5 5 5
5/05/2005	Peninsula Primary	Weaving	4-6	2	20	
6/05/2005	Peninsula Primary	Weaving	4-6	2	20	
9/05/2005	Henderson Valley School	Weaving	4-6	5	21	
10/05/2005	New Lynn Primary	Weaving	4-6	5	28	4 5 4 5 5
10/05/2005	New Lynn Primary	Weaving	4-6	5	30	3 4 4 5 4
11/05/2005	Henderson Valley School	Weaving	4-6	5	25	
12/05/2005	Henderson Valley School	Weaving	4-6	5	33	
12/05/2005	Henderson Valley School	Weaving	4-6	5	30	
13/05/2005	New Lynn Primary	Weaving	4-6	5	27	
13/05/2005	New Lynn Primary	Weaving	4-6	5	30	
16/05/2005	Henderson Valley School	Portraiture/Model	0-3	4	26	
16/05/2005	Henderson Valley School	Portraiture/Model	0-3	4	25	
17/05/2005	New Lynn Primary	Weaving	0-3	5	31	
17/05/2005	New Lynn Primary	Weaving	0-3	5	30	
18/05/2005	Henderson Valley School	Portraiture/Model	4-6	5	32	
18/05/2005	Henderson Valley School	Portraiture/Model	4-6	5	33	
19/05/2005	New Lynn Primary	Weaving	0-3	5	36	
19/05/2005	New Lynn Primary	Weaving	0-3	5	19	3 5 4 4 4
23/05/2005	Arahoi Primary School	Portraiture/Model	4-6	4	25	
24/05/2005	Arahoi Primary School	Portraiture/Model	4-6	4	26	5 5 5 5
26/05/2005	Arahoi Primary School	Portraiture/Model	4-6	4	26	
27/05/2005	Arahoi Primary School	Portraiture/Model	4-6	6	27	5 5 5 5
30/05/2005	Arahoi Primary School	Portraiture/Model	4-6	4	26	4 5 4 5
2/06/2005	Arahoi Primary School	Portraiture/Model	4-6	4	24	
3/06/2005	Arahoi Primary School	Portraiture/Model	4-6	4	25	
9/06/2005	Titirangi Primary School	Clay-face modelling	0-3	4	27	5 4 3 5 4 5
13/06/2005	Titirangi Primary School	Clay-face modelling	0-3	4	24	5 4 4 4 4 5
13/06/2005	Titirangi Primary School	Clay-face modelling	0-3	4	24	5 4 4 4 5 5
14/06/2005	Titirangi Primary School	Enrichment Class	4-6	1	13	
16/06/2005	Woodlands Park Primary School	College	4-6	4	20	
17/06/2005	Titirangi Primary School	Clay	0-3	3	14	
20/06/2005	Titirangi Primary School	Clay	0-3	5	24	
20/06/2005	Titirangi Primary School	Clay	0-3	5	22	

0-3  
4-6  
7-8  
9-10  
11+

