



PRELIMINARY
NOT FOR CONSTRUCTION

Project No: 22200
Sheet No: A1
Scale: AS SHOWN
Date: 10/12/07
Drawn by: JMS
Checked by: JMS
Project: TRM-S109 01

TRAFFIC MANAGEMENT PLAN
OPTION 9

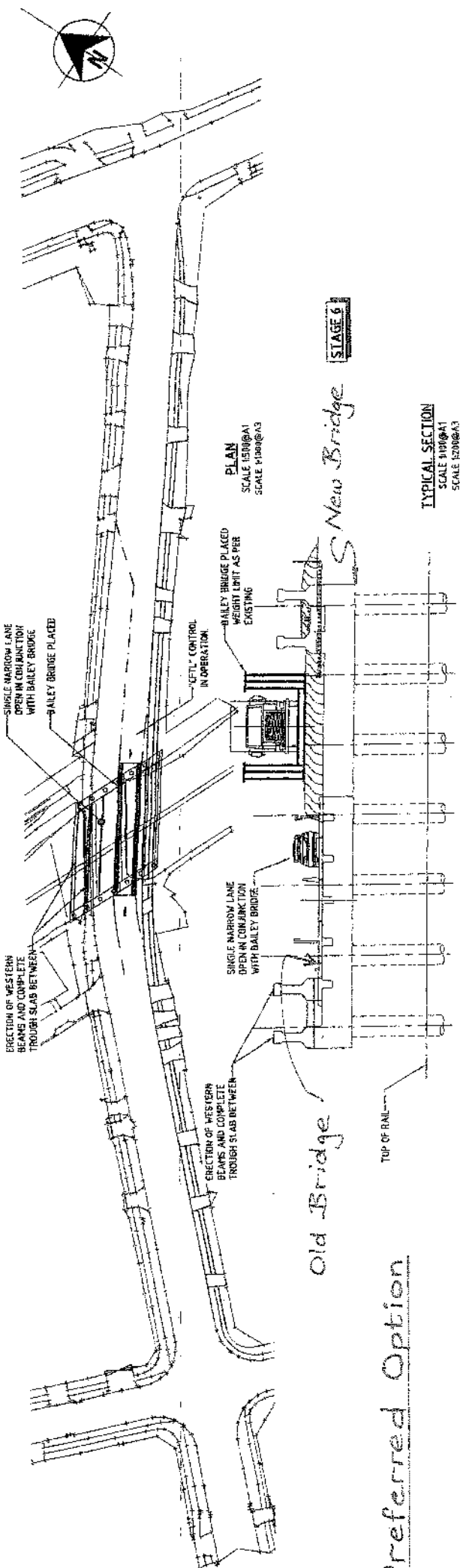
Item	Quantity	Unit	Value
LDI	1	hour	40,000.00
TOP	1	hour	10,000.00
Traffic	1	hour	10,000.00
JPG	1	hour	10,000.00
Referral	1	hour	10,000.00
ES	1	hour	10,000.00

STURGES ROAD
REPLACEMENT BRIDGE

Wattakere City Council
75 Baskin Road
Wattakere, VIC 3086

Cornell Wagner
Engineering & Planning
Level 1, 1111 St Albans Road
St Albans, VIC 3023
Phone: (03) 9477 1111
Fax: (03) 9477 1111
Email: info@cornellwagner.com.au
Website: www.cornellwagner.com.au

A91



STAGE 6

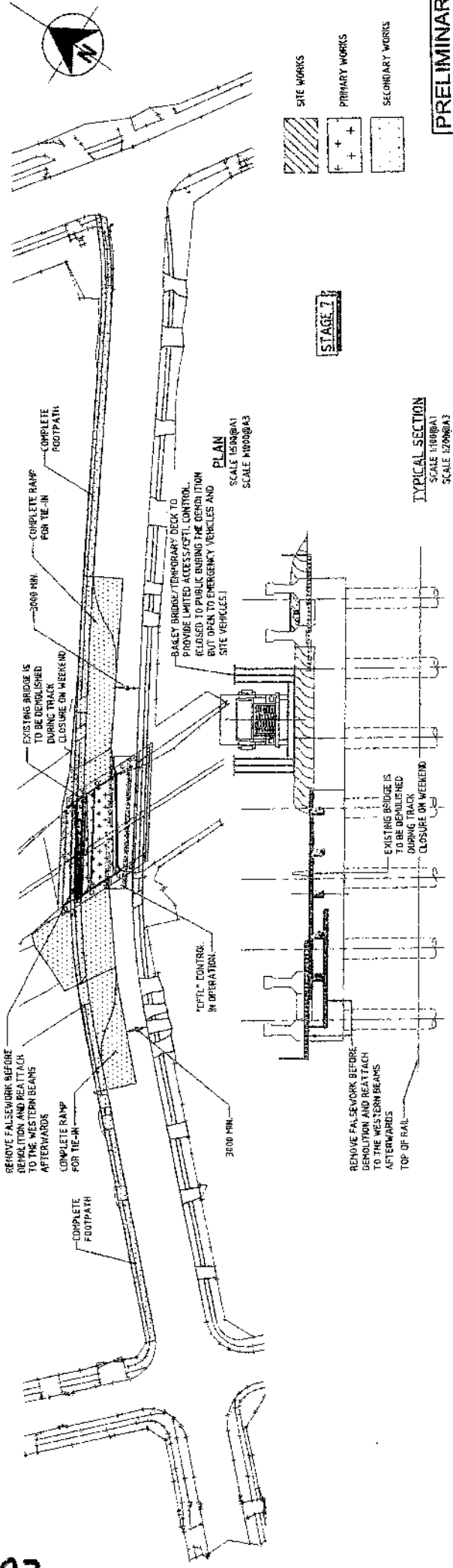
PLAN
SCALE 1:100@A1
SCALE 1:200@A3

TYPICAL SECTION
SCALE 1:100@A1
SCALE 1:200@A3

Old Bridge

Preferred Option

A92



STAGE 7

PLAN
SCALE 1:100@A1
SCALE 1:200@A3

TYPICAL SECTION
SCALE 1:100@A1
SCALE 1:200@A3

SITE WORKS

PRIMARY WORKS

SECONDARY WORKS

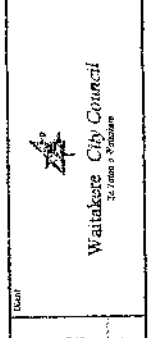
PRELIMINARY
NOT FOR CONSTRUCTION

Project No.	22200
Sheet No.	A1
Drawn By	SK-PB-S09
Check By	
Date	01

PROPOSED BRIDGE
POSSIBLE DEMOLITION &
CONSTRUCTION SEQUENCE
OPTION 2 - SHEET 4 OF 6

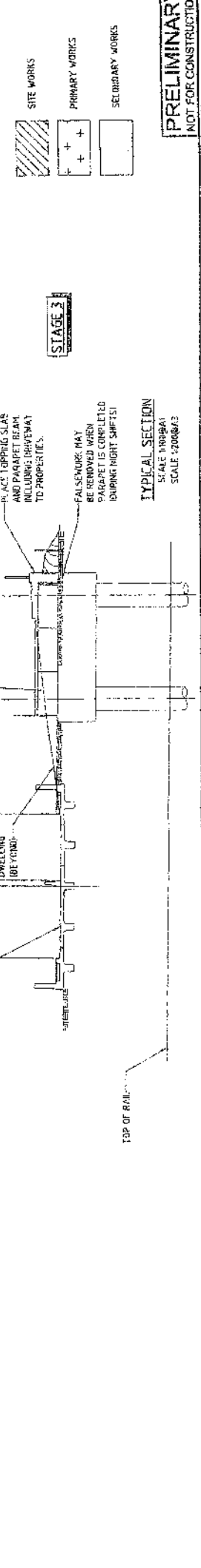
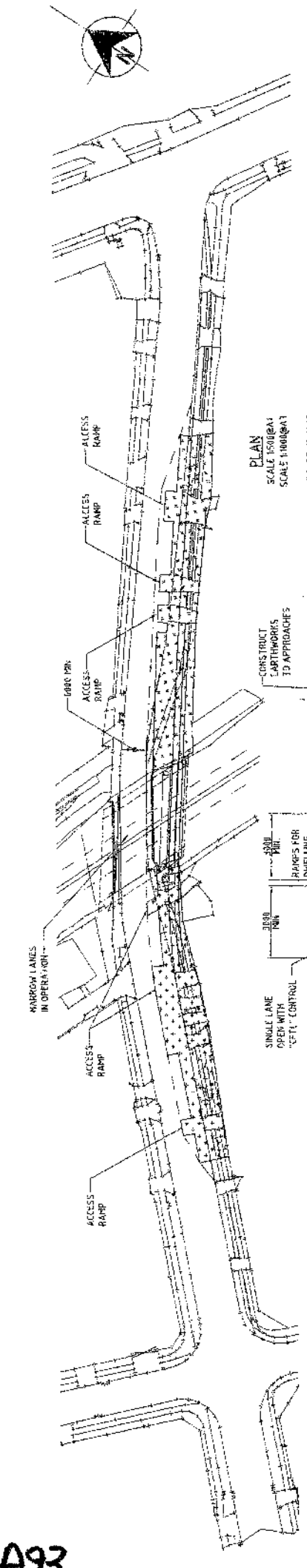
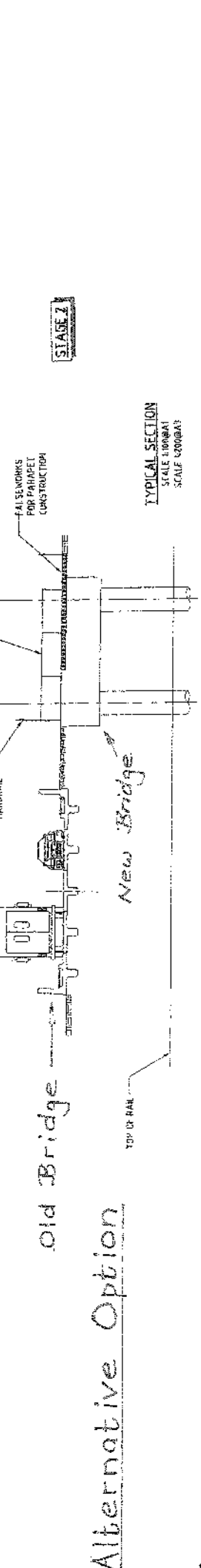
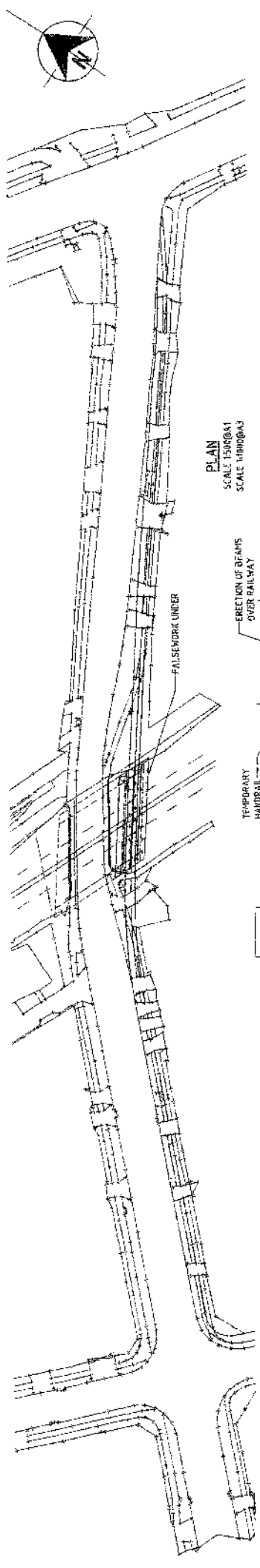
Drawn	Check	Issue	Date
DT	SK	01	01/07/07
Verified	Approved	Date	
TGP	SK	01/07/07	
RJS	SK	01/07/07	

STURGES ROAD
REPLACEMENT BRIDGE



Connell Wagner
1000 High Street, Warrnambool, Vic 3240
PO Box 105, Warrnambool, Vic 3240
Tel: 03 9421 1111 Fax: 03 9421 1112
www.connellwagner.com.au

Rev.	Date	Description
1		Issue for construction



PRELIMINARY
NOT FOR CONSTRUCTION

Project No: 2220

Scale: AS SHOWN

Sheet: A

Project Name: STURGES ROAD REPLACEMENT BRIDGE

Proposed Bridge
Possible Demolition & Construction Sequence
Option 1 - Sheet 2 of 5

Drawn	Checked	Date
CP	AB	29/02/07
CP	AB	09/02/07
CP	AB	09/02/07
CP	AB	09/02/07
CP	AB	09/02/07
CP	AB	09/02/07

Waikeke City Council
As Issued & Approved

Geometrix Management

Level 10, 100-110, The Esplanade, Napier, New Zealand
Tel: 041 544 1111
Fax: 041 544 1112
www.geometrix.co.nz

1. This drawing is the property of Geometrix Management and is not to be used for any other purpose without the written consent of Geometrix Management.

2. The user of this drawing is responsible for ensuring that it is used in accordance with the relevant standards and specifications.

3. The user of this drawing is responsible for ensuring that it is used in accordance with the relevant standards and specifications.

4. The user of this drawing is responsible for ensuring that it is used in accordance with the relevant standards and specifications.

5. The user of this drawing is responsible for ensuring that it is used in accordance with the relevant standards and specifications.

6. The user of this drawing is responsible for ensuring that it is used in accordance with the relevant standards and specifications.

7. The user of this drawing is responsible for ensuring that it is used in accordance with the relevant standards and specifications.

8. The user of this drawing is responsible for ensuring that it is used in accordance with the relevant standards and specifications.

9. The user of this drawing is responsible for ensuring that it is used in accordance with the relevant standards and specifications.

10. The user of this drawing is responsible for ensuring that it is used in accordance with the relevant standards and specifications.

A93

**Project Title: Sturges Road Bridge Improvements
Communication Plan**

**Client: Councillor Penny Hulse, Chair of the City Development
Committee (Tel. 021 273 4663)**

Initiated by	Approved by	Job Closed by	Date
Joe Schady	Hussam Abdul-Rassol	Dai Bindoff	13 February
SIGNATURE	SIGNATURE	SIGNATURE	

Please note that work will not commence until:

1. the approval of the appropriate Manager has been obtained; and
2. all information requirements (as listed below) have been provided.

PROJECT NAME & DETAILS

Waitakere City Council is publicly notifying and consulting with a group of residents in the streets affected by the Sturges Road bridge widening. The project is designed to meet city-wide and regional transport objectives by:

- widening the Sturges Road Bridge – to accommodate double tracking and providing for electrification

Waitakere City Council is pursuing the development of rail as one of its strategic platforms for the development of town centres. The rail corridor is located alongside a number of the City's key strategic growth centres and as such, is ideally located to help promote growth. The Council is working closely with the Auckland Regional Transport Authority and Auckland Regional Transport Network Ltd on the development of the rail corridor. This includes double tracking the western line to Swanson, new station platforms, upgraded shelters, lighting and security cameras. The Council is working towards the development of park and ride facilities at the Sturges Road station.

BACKGROUND

The Council needs to consult on this matter under the RMA. The existing road rail over bridge at Sturges Road, Henderson was built around 1940 by New Zealand Railways to permit vehicle traffic to pass over the single rail track to new housing developments. The present condition of this bridge is poor with severe Alkali Silicate Reaction producing extensive cracking with the long term safety and life of this structure being limited. New Zealand Railways Corporation (ONTRACK) has posted a load limit on the bridge in an attempt to ensure vehicle and rail safety. ONTRACK intends to commence with double tracking of stage 4 of the Western Line from Mt Lebanon Lane to Swanson Station. The existing piers of bridge 58 are aligned in such a way that it is not possible to achieve double tracking without undertaking major structural changes. Accordingly, a decision has been made by ONTRACK and council to demolish the old. The existing piers of bridge 58 are aligned bridge and to rebuild a new wider and an integrated transport bridge in its place. It is envisaged that the new bridge will be completed by end of 07.

AIM & PURPOSE OF PROJECT

To ensure the wider community surrounding Sturges Road overbridge - particularly Henderson residents - understand the implications of the project and its timetable.

COMMUNICATION OBJECTIVES

Key communication objective is that target audiences feel they are aware of the implications of the Sturges Road Bridge widening and know how to get more information or make their views known.

The awareness campaign objective will be to substantially increase the number of residents and ratepayers in Waitakere who are aware of the Henderson Integrated Transport projects, and therefore have an informed understanding of its benefits and implications, and feel they've been consulted with.

Definition

Consulted with means that they have received information from the council and other informed agencies associated with the council (e.g. the contractor, etc), and have had the opportunity to have questions answered and their opinions made known. It means that their opinions will be read or heard by the Council and pertinent points taken into account on their merits.

It does not mean that the Council will – or will not – act on those opinions.

TARGET MARKET/AUDIENCE / STAKEHOLDERS

Key targets include:

Primary target audience is residents in and within a 5km radius of Sturges Road overbridge, and other neighbouring residential areas of Henderson.

A secondary target audience is commuters that might use the bridge to get into Henderson regularly.

STAKEHOLDER ROLES

The key goal is to inform stakeholders (i.e. the commuting business sector, families with school children and residents near the area).

Communication/Consultation Team:

Janet Hannan, Dai Bindoff, Angela Pentead

KEY MESSAGE

We plan to improve the Sturges Road Bridge, which will improve traffic flows in and around Henderson and will provide an integrated link between Swanson and Sturges Road.

Waitakere City's vision is for public transport and communications systems that provide fast, effective services, and for city travel facilitated by integrated, environmentally responsible, and innovative design, with a focus on meeting the essential needs of all, for access, communication, and safety. Replacing the Sturges Road Bridge will provide an integrated link between Swanson and Sturges Development maintaining the safety of pedestrians, vehicles, cyclists and trains

COMMUNICATION MIX

May/Jul/Sep

Display Advertising

Run a 10 x 3 ad, run of paper, three times. Auckland and Western Leader, Create fresh imagery around map/photos as supplied, showing possible diversions

Jun/Jul

Editorial

Story in Waitakere City News

General letter to all affected residents to be sent in March. Insert map on separate flyer or on back of letter, showing public transport alternatives and alternate routes. Establish scope of area to be mail dropped, and then work with regular suppliers to ensure communication gets to residents 1-2 months from construction starting.

Jul/Aug (near start of construction) A special letter to residents adjacent to the works to be sent as the construction starts

Budget for adverts in the press and inserts in the Waitakere News. Map required too.

Tasks: Personalised D/Mail

Personalised D/Mail to key stakeholders – Project Manager and Consultation representative to create personalised letters to the neighbouring residents explaining the construction process and the end benefits. Public Affairs team is to work with Project Manager on posting out at agreed intervals.

Timeline

By late Feb, confirm deadlines for ads and letters, and budget for communication task list, as above.

All months	
Council website	Regular updates for the Council website on homepage.
Council call centre	Q&As to be drafted and agreed process exists for residents calling in with general queries.
Media releases	One at each project milestone. Story list to be prepared by Angela and Joe Schady, These will start from June '07.
Posters	Displays of transport map and alternative routes in Civic Centre reception, libraries and community centres as part of public information and consultation.

BUDGET

Project charge code:
Comments:

Budget:

MEASUREMENT

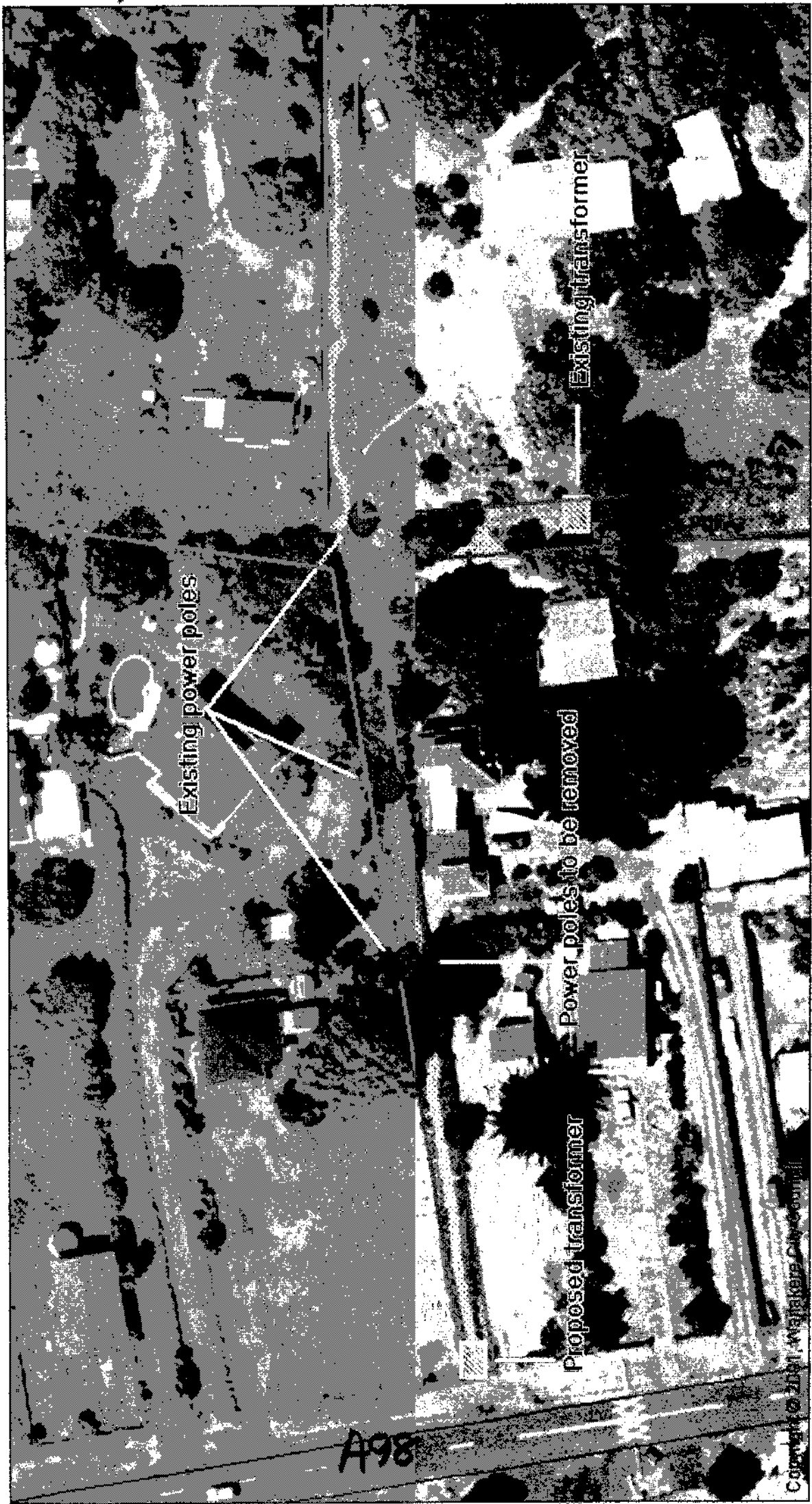
Success will be measured in numbers of submissions by politicians, but management staff will be happy to show some responses and a progression of thinking since the first round of advertising.

TIMELINE

To be concluded as advertising schedules and stories firmed.

COMMUNICATIONS TIMELINE

March 2007 through to early 2008.



Existing power poles

Existing transformer

Power poles to be removed

Proposed transformer

A98

Copyright © 2011, Majid Kars Consulting