



**AGENDA FOR A MEETING OF THE WAITAKERE COMMUNITY BOARD TO BE HELD IN  
THE CIVIC CENTRE, 6 WAIPAREIRA AVENUE, LINCOLN, WAITAKERE CITY,  
ON TUESDAY, 6 DECEMBER 2005, COMMENCING AT 7.00 PM.**

---

**TABLE OF CONTENTS**

<b><u>ITEM</u></b>		<b><u>PAGE NO.</u></b>
1	<b>APOLOGIES</b>	<b>1</b>
2	<b>CONFIRMATION OF MINUTES</b>	<b>1</b>
3	<b>URGENT BUSINESS</b>	<b>1</b>
4	<b>PRESENTATION - AUCKLAND REGIONAL COUNCIL UPDATES</b>	<b>1</b>
5	<b>PUBLIC FORUM</b>	<b>2</b>
6	<b>CHAIRPERSON'S REPORT</b>	<b>2</b>
7	<b>COMMITTEE SECRETARY'S REPORT</b>	<b>6</b>
8	<b>AVIAN BIRD INFLUENZA PANDEMIC PLANNING</b>	<b>9</b>
9	<b>PROPOSED FLUSH MEDIAN AND RELATED PARKING RESTRICTIONS IN FOREST HILL ROAD, HENDERSON</b>	<b>14</b>
10	<b>PROJECT TWIN STREAMS UPDATE</b>	<b>16</b>
11	<b>PROJECT TWIN STREAMS CYCLE AND WALKWAYS PROGRAMME - UPDATE</b>	<b>23</b>
12	<b>WAITAKERE WARD REVEGETATION PROGRAMME</b>	<b>27</b>
13	<b>BOARD MEMBERS' REPORTS</b>	<b>28</b>

**AGENDA FOR A MEETING OF THE WAITAKERE COMMUNITY BOARD TO BE HELD IN  
THE CIVIC CENTRE, 6 WAIPAREIRA AVENUE, LINCOLN, WAITAKERE CITY,  
ON TUESDAY, 6 DECEMBER 2005, COMMENCING AT 7.00 PM.**

---

**1 APOLOGIES**



**2 CONFIRMATION OF MINUTES**

Meeting Minutes - Tuesday, 1 November 2005

**RECOMMENDATION**

That the minutes of the Meeting of the Waitakere Community Board held on Tuesday, 1 November 2005, as circulated, be taken as read and now be confirmed.



**3 URGENT BUSINESS**

Section 46A(7) of the Local Government Official Information and Meetings Act 1987 provides that where an item of business is not on the agenda, it may only be dealt with at the meeting if:

- (i) the Board by resolution so decides; and
- (ii) the Chairperson has explained at the beginning of the meeting (when open to the public) that the item will be raised for discussion and decision, why the item is not on the agenda, and why it cannot be delayed until a subsequent meeting.

The Board may make a decision on a matter determined to be urgent.

**NOTE:** Urgent business need not be dealt with now and may be delayed until later in the meeting.



**4 PRESENTATION - AUCKLAND REGIONAL COUNCIL UPDATES**

Councillors Sandra Coney and Paul Walbran from the Auckland Regional Council may be in attendance to update the Board on Auckland Regional Council activities.



## 5 PUBLIC FORUM

For guidance of Community Board Members, the Council's Standing Orders have the following provisions in regard to Public Forum.

- (i) members of the public wishing to address the Board in Public Forum shall furnish their names to the Chairperson at the beginning of the meeting; and
- (ii) the Chairperson shall determine the order of speakers, and allow five minutes for speaking time;
- (iii) questions by members are to be confined to obtaining information or clarification on matters raised by the speaker.

Section 46A(7A) of the Local Government Official Information and Meetings Act 1987 provides that no resolution, decision, or recommendation may be made in respect of any specific item of business not on the agenda except to refer the items to a subsequent meeting for further discussion. Therefore, no decision may be made on matters raised in Public Forum. However, written reports on matters raised may be requested from the Chief Executive Officer.



## 6 CHAIRPERSON'S REPORT

Well, another year gone, but certainly not forgotten! I'm sure we are all looking forward to a well deserved break over Christmas and the New Year. An opportune time for me to tidy up some paperwork, do my tax, read something other than agendas, reports etc.

Recently the Kiwi Trikers who own premises at the rear of Corban Reserve were the unfortunate victims of an arson attack. Their building is no longer useable and because of its location is unable to be insured or gain funding for repairs.

The Kiwi Trikers are a family based Motor Trike enthusiast society who, since being established in 1994, have been heavily involved with local charity organisations and assist in fundraising for many local schools. The group have always encouraged the use of their building by other local groups and organisations but this has been hindered because of its isolated location.

Members of the Waitakere Community Board, and Council officers met with members of the group to see if there was a potential solution to their problem. Several options were discussed, one being the relocating of the building to an alternative sight.

Nearly 18 months ago the McLaren Park Project Committee approached Eco-Water about being able to access one of the houses being purchased and removed from the flood areas in the Twin Stream Project area. The potential to use one of the houses as a community house in the McLaren Park area was proposed. As things do, this was discussed but never developed further.

Community Board members, being the creative thinkers they are, put their heads together and discussed looking at the option of moving the Trikers Clubrooms to Corban Green and adding one of the Eco-Water houses adjacent on the site and providing the McLaren Park residents a double opportunity for community use.

I am therefore asking Council officers to do a feasibility study on the relocation of the Kiwi Trikers building and the establishment of a Community House, using one of the Eco-Water houses, on the Council owned Corban Green in Corban Avenue, Henderson.

### **Paremuka Bridge – Bridging the Gap**

Yes it's in the Annual Plan.....hang on a minute, where did it go? Whew, thank goodness for that, it's back in! In 2002 the Board submitted and struggled to retain the construction of this bridge in the Annual Plan Budget for 2002/2003 but in the end we convinced Council it was worthwhile and necessary to the communities of Ranui/Swanson and Western Heights/Henderson and in fact to Waitakere City at large.

The bridge has now been completed and was opened by Mayor Bob Harvey on Friday, 25 November with children from all three schools in the catchment area (Summerland, Ranui & Birdwood) taking part in the celebration and opening ceremony. The art work has been delayed and will still be 2-3 months before being installed but I am told this will be worth the wait.

I have added some photos from when the project started, the huge beams being placed by New Zealand's largest crane and finally the finished product. Well done to Tony Miguel, Group Manager, Asset Management, all the Council officers involved and the contractors who I believe 'came in' on time and on budget.



Construction starts September 2004



'Bridging the Gap' from Summerland Drive, in Western Heights to Munro Road Ranui



Kaumātua of Te Kawerau A Maki, Te Warena Taua does the blessing of the “Paremuka Bridge’



Mayor Bob Harvey and Councillors Penny Hulse and Peter Chan, Waitakere Community Board Chairperson Christine Shepherd and Board Member Sharon Davies and Massey Community Board Member Gaylene Maurice attended the opening.

### **Waitakere Village Railway Station**

And just for the record the people of Waitakere Village endorsed the renaming of their station to ‘Waitakere Village Station’.

I was very pleased and impressed when invited to attend a meeting at Waitakere Village regarding the safety, condition and maintenance of the railway station or ‘bunker’ as it is affectionately known by locals. The local Resident & Ratepayer Group had organised a meeting and had representatives from Auckland Regional Transport Authority and Ontrack in attendance, no small feat!

There were some very positive outcomes from the meeting as follows:

**ONTRACK** - Over the next couple of days, a contract will be made out to open up the railway station back wall to allow visibility from the road. Ontrack are open to Waitakere City Council taking a lease over carpark land for a token amount. They will look at the toilet situation but probably not a "goer", due to Connex drivers and associated complications.

**Waitakere City Council** - spoke about negotiating toilets for use by public and Connex drivers. This would have to be done in conjunction with Auckland Regional Transport Authority.

**Waitakere City Council Parks** - will confirm whether there is a lease from LINZ to Waitakere City Council on the grassy area between road and railway station. He will also check mowing schedule and see if this can be added to the park mowing schedule.

**Auckland Regional Transport Authority** - will talk to Auckland Regional Transport Authority about extending security services to Waitakere ie security check up to 3X nightly. Will continue with basic maintenance.

### **Heritage Recognition**

Too often recently it has come to the Community Board to make a decision on the renaming of a street, reserve or given area in recognition of a family that has historically owned land but when the land has been sold on and subdivided the recognition of that family in the naming of a street or public area has been neglected.

It is not an easy exercise when residents have 'moved in' and notified services, friends and family etc of an new address to convince them it should be changed. Far easier to do it before they purchase or move onto the property.

When I recently attended a National Community Board Executive Meeting in Wellington I had an informal discussion on this matter with the Chairperson Yvonne Palmer of Christchurch who outlined the process in Christchurch whereby heritage naming of streets is investigated by the Council officers and recommendations taken to the Community Board

I would like to recommend to the Chief Executive Officer that Waitakere City Community Boards be given the delegation to name roads, the wording of the delegation being '*The power contained in s.319(j) of the Local government Act to name any road.*'

A1

I have included at page A1 a copy of a report to the Shirley Papanui Community Board as an example.

### **Farewell to Ann Magee**

I have attended many farewells over the last 4 years of Council officers who are either retiring or moving on. Ann's farewell last week would have to have been the pinnacle of them all, the speeches and accolades continuing for 2 ¾ hours. Ann has been the lynchpin in Strategy & Development for 15 years and I know will be very sadly missed by staff and elected members alike.

Ann has accepted a position with the Auckland Regional Council and I'm sure she will continue to be an advocate for Waitakere City in her new role. Good Luck Ann and don't forget where your 'Westie' friends are!!

## Maori Representation on Council Standing Committees

Although I attended the meeting where this was to be decided I was not allowed to stay as the workshop was closed to anyone other than Councillors, related Council Officers and Te Taumata Runanga. I was disappointed not to be able to stay and listen to the debate as I partially supported the recommendation but not completely and would have liked to been better informed of the arguments for and against. However I am pleased to say that the final outcome of the workshop and decision made by Councillors was a well thought-out and balanced one.

A2

I would like the Board to have some discussion on this and, if all agree, endorse my recommendation of support for the Councils decision. I have attached a copy of the press release at page A2.

### RECOMMENDATIONS


1. That the Chairperson's Report be received.
2. That the Chief Executive Officer be requested to provide a feasibility study on the relocation of the Kiwi Trikers building and the establishment of a Community House, using one of the Eco-Water houses, on the Council owned Corban Green in Corban Avenue, to be brought back to the Waitakere and Henderson Community Boards. (Corban Avenue is the boundary of the 2 wards and therefore Henderson has a community of interest).
3. That the Waitakere Community Board request the Council to delegate the authority to name roads to the Waitakere City Community Boards.  
  
*'The power contained in s.319(j) of the Local government Act to name any road.'*
4. That the Waitakere Community Board support the Councils recommendation to appoint a member of Te Taumata Runanga to the City Development Committee.




Christine Shepherd, JP

**CHAIRPERSON**






## 7 COMMITTEE SECRETARY'S REPORT



Issue	Comments	Reporting Council Officer
Gorse Management For Piha Road, Piha	The Piha Road Gorse Management Contract public tender closed on Tuesday, 22 November 2005. The tender evaluation phase is currently being undertaken. The proposed timeframe is to undertake the control of gorse using cut and stump treatment (no spraying) methods from February to March 2006. Revegetation of relevant sites is programmed for April 2006, subject to weather conditions.	Debbie Chapman  836 8000 Ext: 8368

Issue	Comments	Reporting Council Officer
<p>Sustainable Living Centre Update</p>	<p>The Sustainable Living Centre located at 4 Olympic Place, New Lynn is a resource centre for Waitakere and Auckland Communities to learn practical tools to live more sustainably in the urban environment. The Centre, established by EcoMatters Environment Trust in June 2004, is open to the public Wednesday – Friday, 10am to 2pm and on the 1<sup>st</sup> and 3<sup>rd</sup> Saturday of every month, 10am to 1pm.</p> <p>A Resource Room is also available to the public and is stocked with books and periodicals relating to environmental matters.</p> <p>The Centre is currently undergoing landscape development and a series of stakeholder meetings have been held to gather community input.</p> <p>It is anticipated that the landscaping will be completed in February 2006. An Open Day will be held in February 2006 and Community Board Members will be invited to attend and tour the Centre.</p>	<p>Brent Bielby   836 8000            Ext: 8365</p> <p>Gretchen Schubeck            (Executive Director, EcoMatters Environment Trust)   826 4276</p>
<p>Waitakere River Realignment            6 May 2003            Resolution No: 864/2003</p>	<p>Works to realign the river are being undertaken on an ongoing basis. Parks Assets are now investigating some hard engineering options such as the installation of gabions or rock structures. These structures, however, will be subject to Auckland Regional Council consents which could be complicated and quite expensive to obtain. Funds have been allocated through the draft 2006/2007 annual plan to undertake the design work and to obtain consents. Further funds have been included in the 2007/2008 financial year for the necessary physical works to be implemented. In the meantime Parks Assets will continue with the physical works to realign the river.</p>	<p>Harish Singh   836 8000            Ext: 8953</p>

Issue	Comments	Reporting Council Officer
Marawhara-Wekatahi Stream Dune Restoration	On Friday, 2 September Council officers and Community Board Members held a public meeting at Piha North to provide further information on additional dune stabilisation planting as part of the Marawhara Wekatahi stream alignment. It was discussed and agreed that planting of up to 3,000 spinifex plants will be undertaken along the forward crest of the dune from the north side of the walkway to the Marawhara-Wekatahi Stream, and on the face of the dune immediately to the south of the walkway. This will be undertaken on 2 December 2005 by the public as community planting and coordinated through Piha Coastcare. Some preparatory weed control will be done prior to that date. It was agreed at the public meeting that protection of the planting from pedestrians should be implemented, hence the existing temporary access way fence will be maintained. Any decision as to whether the access way fence is to remain permanently will be addressed at a later stage, once the planting is established.	Warren Ogilvie  836 8000 Ext: 8561
Piha Stream Pedestrian Bridge 6 May 2003 Resolution No: 865/2003	Initial investigative works are currently underway to determine the parameters required to design the bridge. Once this is done, consultation with the community will be undertaken to determine the details of the structure.	Harish Singh  836 8000 Ext: 8953

**REPORTS PENDING**

Subject	Date Requested	Report Due	Reporting Officer
The Laingholm Beach Hall Public Forum 9 September 2002	July 2005	February 2006	Kimberly Rees  836 8000 Ext: 8559
Project Twin Streams - Four Monthly Progress Report Resolution No: 1468/2005	August 2005	February 2006	Tony Miguel  836 8000 Ext: 8294
McLaren Park Community Project 9 September 2002 Resolution No: 2766/2002	September 2005	February 2006	Kimberly Rees  836 8000 Ext: 8559

REPORTS PENDING			
Subject	Date Requested	Report Due	Reporting Officer
Piha / Karekare and Huia / Cornwallis Local Water Plans  Environmental Management Committee	September 2005	February 2006	Tony Miguel  836 8000 Ext: 8294
Water Supply Dams  Environmental Management Committee  12 August 2003  Resolution No: 1709/2003	September 2005	February 2006	Tony Miguel  836 8000 Ext: 8294

### **RECOMMENDATION**

That the Committee Secretary's Report for 6 December 2005 be received.

Report prepared by: Owena Schuster, Committee Secretary.



## **8 AVIAN BIRD INFLUENZA PANDEMIC PLANNING**

### **PURPOSE OF THE REPORT**

The purpose of this report is to give the Waitakere Community Board an overview of Avian Bird Influenza planning and organisation at Waitakere City.

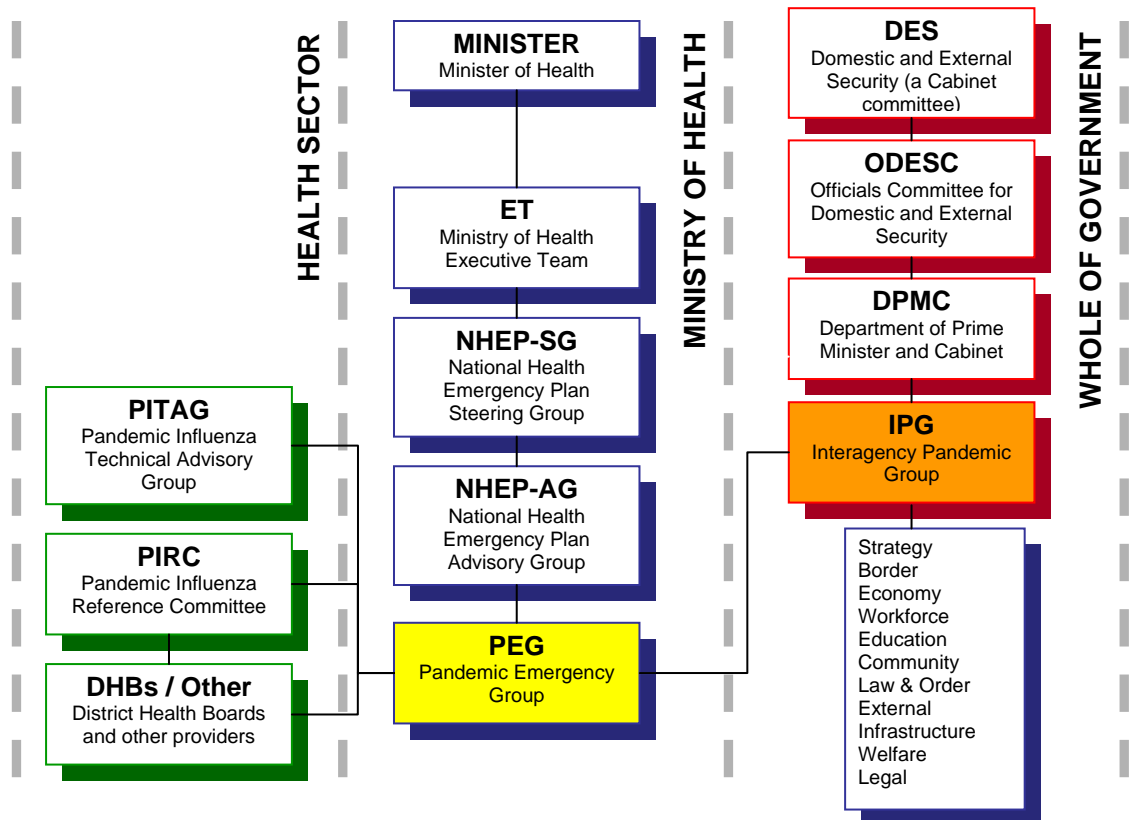
### **BACKGROUND**

The World Health Organisation has warned that the current risk from Avian Influenza ("Bird Flu") becoming the next human influenza pandemic is high.

New Zealand has been planning for an influenza pandemic for some time. The Ministry of Health is working with the health sector and a wide range of other government agencies to ensure New Zealand is as prepared as possible for a potential pandemic.

As shown in the following diagram, the Ministry of Health has set up a government-wide Intersectoral Pandemic Group. A number of work streams have been formed under the Intersectoral Pandemic Group to plan for and minimise the impact of associated risks.

The Ministry of Economic Development is leading the work stream on infrastructure. The Infrastructure Work Stream aims to ensure that infrastructure providers are prepared for possible disruption to services due to staff shortages, or for possible unexpected increases in demand for infrastructure services.



Ministry of Health's *National Health Emergency Plan: Infectious Diseases* describes the way Ministry of Health and New Zealand's health services will function following a declaration of a national health-related emergency.<sup>1</sup> District Health Boards, along with Police, Fire and "lifeline utilities" are part of regionally-focused Civil Defence Emergency Management Groups. Civil Defence Emergency Management Group plans may be accessed through Regional Council/Unitary Authority websites.

The Ministry of Health advises that the potential impacts of an influenza pandemic in New Zealand include:

- Morbidity and mortality are unknown, but may be very high;
- Full community mobilisation needed - all government and many community agencies are likely to be involved in whole-of-society response;
- Health services may be unable to provide direct care (the orientation of health care may be to co-ordinate and support community mobilisation); and
- Very high staff absence rates may be likely, for some periods during the pandemic.

Once the epidemiology of the pandemic strain virus is known, Ministry of Health will customise policies and programmes in its strategy to address the particular virus. As at October 2005, the Ministry of Health's five-stage strategy is described as:

<sup>1</sup> New Zealand's response may be different from other countries due to our unique geographical position, particularly with respect to border management issues.

**Overall Influenza Pandemic Management Strategy and Associated Actions**

STAGE	NZ STRATEGY	MoH / DHB ALERT CODE	OBJECTIVE AND ACTION
1	Plan For It (Planning)	WHITE (Information / advisory)	<ul style="list-style-type: none"> <li>• <u>Objective</u>: devise a plan to reduce the health, social and economic impact of a pandemic on New Zealand.</li> <li>• Full engagement of whole of government.</li> <li>• Consultation with and input from many agencies.</li> </ul>
		YELLOW (Standby)	<ul style="list-style-type: none"> <li>• Prepare to implement pandemic response action plans.</li> </ul>
2	Keep It Out (Border Management)	RED <sup>2</sup> (Activation)	<ul style="list-style-type: none"> <li>• <u>Objective</u>: keep pandemic out of New Zealand.</li> <li>• Wide range of border management options, up to:                             <ul style="list-style-type: none"> <li>- Closure of New Zealand's border to all non-nationals.</li> <li>- Quarantine of all returning New Zealand citizens.</li> </ul> </li> <li>• Enhance internal disease surveillance and notification.</li> <li>• Investigate and follow up any suspect cases.</li> </ul>
3	Stamp It Out (Cluster Control)		<ul style="list-style-type: none"> <li>• <u>Objective</u>: control and/or eliminate any clusters that might be found in New Zealand.</li> <li>• Isolate and treat patients and households.</li> <li>• Contact trace and treat all contacts.</li> <li>• Restrict movement into/out of affected area(s).</li> <li>• Close schools and other places where people congregate, and prohibit mass gatherings.</li> <li>• Maintain border management.</li> </ul>
4	Manage It (Pandemic Management)		<ul style="list-style-type: none"> <li>• <u>Objective</u>: to reduce the impact of pandemic influenza on New Zealand's population.</li> <li>• Health Service reconfiguration to support community response in affected areas.</li> <li>• Social distancing measures.</li> <li>• Support for people cared for at home, and their families.</li> </ul>

<sup>2</sup> The transition from Code White to Red could be quite quick (i.e. the Code Yellow phase could be short).

STAGE	NZ STRATEGY	MoH / DHB ALERT CODE	OBJECTIVE AND ACTION
5	Recover From It (Recovery)	GREEN (Stand down)	<ul style="list-style-type: none"> <li>• <u>Objective</u>: expedite the recovery of population health where impacted by pandemic, pandemic management measures, or disruption to normal services.</li> <li>• Phase starts when the population is protected by vaccination, or the pandemic abates in New Zealand.</li> </ul>

Moves from Code White (which is the stage in November 2005) to Yellow, and Yellow to Red (i.e. the escalation steps), and subsequently from Red to Green, will originate from the Ministry of Health. The Ministry of Health will put the notification on their website and notify their media contacts. The Ministry of Economic Development will endeavour to keep infrastructure providers informed of these changes.

### STRATEGIC CONTEXT

Emergency planning and preparation for a possible avian influenza pandemic contributes towards the Council's Safe City strategic priority.

### ISSUES

#### Pandemic Planning within Waitakere City Council

A3-A34

Locally there has been a considerable amount of liaison between the Waitemata District Health Board Pandemic Planning Manager, Dr Jocelyn Peach, and Principal Health Officer, Dr Lanes Johnson, with Councils Chief Executive Officer and Manager, Emergency Management, for internal planning and joint co-ordination response purposes. This activity has now led to the development of a Pandemic Planning Guide for Council business continuity and emergency management purposes as attached at pages A3 to A34.

Elected Members will also be aware from publicity, of the likely consequences of any outbreak and the affect it would have on Council's ability to provide levels of essential services to the community. In a worst case scenario, planning would be based on having at least half of all staff being absent from work, either at home or through illness, and the added possibility that a number of staff will also die. While there is no guarantee when a pandemic will occur, the reality is that it will happen and the preparation being taken now ensures the event is well managed. The appendices to the Planning Guide give examples of various scenarios for pandemic response escalation.

Planning for burials is also undertaken. Provision for mass grave situations is underway regarding available space at both the Waikumete and Swanson cemeteries which will be required for regional as well as local purposes. Should mass burials be required, some cremations may be permitted.

In addition to local planning, the Manager Emergency Management is also the regions Civil Defence Emergency Management representative to the Ministry of Civil Defence Emergency Management for overall Civil Defence Emergency Management planning throughout the region. Primary responsibility for the management of a pandemic rests with the Ministry of Health as the lead authority. Any outbreak, however, would likely result in either a declaration of a regional emergency and or a national emergency. The Ministry of Health would still manage the health response but the overall co-ordination would be under the umbrella of Civil Defence Emergency Management. The primary Civil Defence Emergency Management activities will be logistical support, transportation and communications, and local co-ordination would be conducted with the Waitemata District Health Board from our existing Emergency Operations Centre.

The level of planning and coordination undertaken to date has been quite extensive and appreciation of the scope of the likely affects upon Council is now well understood. One item that still has to be resolved is the provision of personal protection and cleaning equipment across Council. Without necessarily going overboard, there is a requirement to buy in stocks of some equipment as a contingency measure. To not do so would seriously compromise personal safety as there would not be a guarantee of stocks being available through panic buying in the event of an outbreak.

There is no vaccine currently available for an Avian Bird Influenza Pandemic. It will probably take about six months from outbreak to develop a vaccine in sufficient quantity for the population of New Zealand. Anti viral medication such as Tamiflu is available and may be of some help in reducing the influenza effects if taken early enough. Arrangements are in place for the provision of Tamiflu for essential staff and for staff who may become ill. All sectors of the community will be at risk but those living in the rural areas will be less so given their greater isolation and generally greater resilience in looking after themselves.

The Mayor has requested that an update be given to Council on preparations and planning to date by means of a presentation. It is planned that this presentation will take place early in the New Year in the form of a workshop for Elected Members.

## **CONCLUSION**

The likelihood of a worldwide pandemic from Avian Bird Flu is more a matter of when not if. It will, however, have to mutate into a form where it is passed from human to human rather than the current bird to human form in order to reach major pandemic proportions. New Zealand by virtue of its isolation is in a good position to manage an outbreak and contain any consequences. Planning, however, has to be based upon a worst case scenario.

In the meantime, considerable work has already been undertaken at a local level between health authorities and Council staff for readiness and response purposes and will be ongoing. Waitakere City through the work already undertaken and the ongoing education of staff and management is well informed at this time and planning is well advanced.

## **RECOMMENDATION**

That the Avian Bird Influenza Pandemic report be received.

Report prepared by: Bill Morley, Manager: Emergency Management Services.



**9 PROPOSED FLUSH MEDIAN AND RELATED PARKING RESTRICTIONS IN FOREST HILL ROAD, HENDERSON**

**PURPOSE OF THE REPORT**

The purpose of this report is to seek the Waitakere Community Board's approval to install a flush median and associated 'No Stopping At All Times' controls in Forest Hill Road, Henderson.

**BACKGROUND**

The Council Crash Reduction Studies have identified a high number of crashes in Forest Hill Road for the 5 years from 2000 to 2004. The types of crashes occurring can be reduced by installing a flush median.

A flush median is a painted central traffic line with painted diagonal stripes. A flush median is intended as a refuge, clear of through traffic, for vehicles turning right to or from properties and to safely separate opposing traffic. Flush medians have a traffic calming effect by reducing carriageway widths. Flush medians include occasional physical (raised) traffic islands to discourage misuse of the median and assist pedestrians to cross the roadway.

**STRATEGIC CONTEXT**

The Waitakere City Council's 'Integrated Transport and Communication' platform provides the strategic context for this report. The vision is for public transport and communications systems that provide fast, effective services, and for city travel facilitated by integrated, environmentally responsible, and innovative design, with a focus on meeting the essential needs of all, for access, communication, and safety.

Some 30% of Waitakere urban traffic crashes occur when vehicles are crossing/turning to or from side streets/properties, and flush medians are an effective treatment. Flush medians also reduce head-on, overtaking and rear end crashes, and generally calm the traffic flow.

'No Stopping At All Times' controls can be applied to ensure efficient, safe movement on roads by keeping traffic lanes and visibility lines clear, and can be applied where there are centre traffic islands.

**ISSUES**

Forest Hill Road is a district arterial route with a traffic volume of approximately 13,100 vehicles a day. A search of the Land Transport New Zealand database reveals a total of 21 reported crashes in Forest Hill Road between Henderson Valley Road and Pine Avenue for the 5 years from 2000 to 2004. Of the 21 crashes, there were 14 'crossing/turning', 5 'lost control' and 2 'rear-end' crashes and these resulted in 3 minor injuries.

A35-A37

It is proposed to install approximately 820 metres of new flush median in Forest Hill Road between Henderson Valley Road and Pine Avenue. A raised island within the flush median is proposed at 38 Forest Hill Road to assist pedestrians to cross the road safely and discourage overtaking on the median. 'No Stopping At All Times' controls are recommended on both sides of the raised island to ensure clearance for through traffic. A plan showing the extent of the proposed flush median and 'No Stopping At All Times' controls is shown at pages A35 to A37.

The project is predicted to have benefits to the community through a reduction in the number and severity of crashes on the route. Land Transport New Zealand's Project Evaluation Manual states that the installation of new flush medians in urban areas reduces the number of accidents by 25% on average. In this case, it represents \$14,500 per year in road safety benefits for Forest Hill Road between Henderson Valley Road and Pine Avenue. The benefits relate to the wider community such as damage to properties, insurance costs and medical costs.

Consultation letters and drawings of the proposed works including the proposed raised island and no stopping controls were sent to the residents of Forest Hill Road between Henderson Valley Road and Pine Avenue. One response was received favouring the proposed works.

The resident at 10A Forest Hill Road requested an 8 metres length of 'No Stopping At All Times' control outside the frontage of property number 10 Forest Hill Road to improve the sight distance of vehicles exiting a shared driveway that serves three houses. The request from the resident is justified because the property is located close to the entrance/exit of the petrol station and Henderson Valley Road/Forest Hill Road roundabout, therefore improving the sight distance will allow the residents to exit the shared driveway safely. The resident at 10 Forest Hill Road was consulted in writing and no objection has been received. Accordingly, it is proposed to install an 8 metres length of 'No Stopping At All Times' control outside the frontage of property number 10 Forest Hill Road.

## **RESOURCES**

The Forest Hill Road Flush Median project is estimated to cost \$25,000 and has been provided for in the 2005/2006 Annual Plan. It will be funded from the subsidised Minor Safety Projects budget and installed under the Minor Safety Stage 1 contract.

## **CONCLUSION**

The Forest Hill Road Flush Median is recommended based on community benefits from crash reductions and to calm traffic on this arterial route. Funding is allocated for this project in the 2005/2006 Annual Plan. Associated 'No Stopping' controls are recommended to further facilitate efficient, safe movement on roads by keeping traffic lanes and visibility lines clear. This project will contribute to Community's objective of a continuing long term downward trend in the accident rates in Waitakere City.

## **RECOMMENDATIONS**

1. That the Proposed Flush Median and Related Parking Restrictions in Forest Hill Road, Henderson report be received.
2. That in relation to **FOREST HILL ROAD, HENDERSON**:
  - (a) That all existing parking restrictions or limitations currently applicable to **FOREST HILL ROAD, HENDERSON** imposed by any prior resolution (including resolutions of any former authority), that are affected, or superseded, or replaced by part (b) of this resolution, cease to have any force and effect as from the date of this determination provided however that any current enforcement action by way of prosecution arising from, or infringement notice issued in relation to, any non-compliance with or breach of any such parking restriction or limitation be authorised to be concluded in the normal manner.

- (b) That, in accordance with the powers conferred by virtue of the Local Government Act 1974, the Land Transport Act 1998, the Transport Act 1962 and the Waitakere City Council Bylaw No 7, 1991 – Traffic, the following controls be now resolved to be specified and imposed, namely,
- (i) On the centre of the carriageway in **FOREST HILL ROAD**, from a start point at **HENDERSON VALLEY ROAD** to an end point at **PINE AVENUE**, a '**FLUSH MEDIAN**' be put in place including a raised traffic island in the vicinity of number **38 FOREST HILL Road**.
  - (ii) On the east kerb line of **FOREST HILL ROAD**, from a start point on the south side driveway 38 Forest Hill Road to an end point 15 metres further south, a '**NO STOPPING AT ALL TIMES**' parking control be put in place.
  - (iii) On the west kerb line of **FOREST HILL ROAD**, from a start point on the south side driveway 39 Forest Hill Road to an end point 15 metres further south, a '**NO STOPPING AT ALL TIMES**' parking control be put in place.
  - (iv) On the east kerb line of **FOREST HILL ROAD**, from a start point on the north side driveway 10A Forest Hill Road to an end point 8 metres further north, a '**NO STOPPING AT ALL TIMES**' parking control be put in place.
3. That the appropriate signage and/or road markings, in accordance with the provisions of the Land Transport Rule: Traffic Control Devices - Rule 54002 be hereby approved to be put in place to properly establish, delineate and record the said parking limitations and restrictions.

Report prepared by: Vinh Bui, Senior Transport Engineer, Transport Assets.



## 10 PROJECT TWIN STREAMS UPDATE

### **PURPOSE OF THE REPORT**

The purpose of this report is to provide the Waitakere Community Board with an update of Project Twin Streams outcomes from July to November 2005.

### **BACKGROUND**

Project Twin Streams is an exciting and innovative multi-faceted project that focuses on achieving long-term sustainable integrated management of the Henderson Creek and Huruhuru Creek catchments. This project weaves together the issues of integrated stormwater management and the restoration of 125 kilometres of stream banks along the Oratia, Waikumete, Opanuku, Pixie and Swanson Streams, with healthy and sustainable communities in a healthy environment.

At the heart of Project Twin Streams is the relationship between the people and the environment. The project recognises that it is not possible to repair and restore natural waterways without working with the people and communities who are part of the catchment. This requires looking beyond stream restoration to a sustainable community development approach that includes, promotes and fosters the inter-connectedness of economic, social, cultural, spiritual and environmental well-beings.

A report was presented to Council on Wednesday, 20 July 2005 giving an overview of Project Twin Streams and requesting that Council endorse the quadruple bottom line objectives of the programme. Subsequently, Council passed the following resolutions:

- “1. That the Project Twin Streams objectives as set out in this report be endorsed in principle, for detailed consideration by the City Development Committee.
2. That a progress report on Project Twin Streams be submitted to the City Development Committee every four months to provide strategic direction and an overview of the project.
3. That further consideration be given in the 2006/2016 Long Term Council Community Plan to enhance Project Twin Streams and obtain leverage from external funding.”

1363/2005

On Tuesday, 2 August 2005 a report was presented to Waitakere Community Board with the following resolution passed:

“That a progress report on Project Twin Streams be submitted to the Waitakere Community Board every four (4) months.”

1479/2005

## STRATEGIC CONTEXT

Project Twin Streams has been identified as one of Council's catalytic projects and will contribute to implementing the Vision of Waitakere as an Eco City through all Council's strategic objectives and platforms. The Vision for Project Twin Streams is *Working Together for Healthy Streams & Strong Communities: Creating a Sustainable Future*.

In particular Project Twin Streams supports the Council strategic platforms of:

- Strong Communities - people are active, healthy and content;
- Active Democracy - people feel they can make a difference. There are high levels of community participation and respect for each others views;
- Green Network - caring for natural areas. Protection and enhancement is on both public and private land; community involvement is encouraged, as is the protection of landscapes, native plants, wildlife and ecosystems;
- Three Waters - stream restoration and resolving stormwater management issues.

Project Twin Streams also demonstrates the integration of Council's Quadruple Bottom Line approach in programme development and implementation as required by the Local Government Act 2002.

## ISSUES

### Scope of Project Twin Streams

Project Twin Streams is working across all four aspects of wellbeing - social, economic, environmental and cultural. This requires actions to ensure strong, healthy and engaged local communities who understand the challenges facing their catchment and take responsibility for them. It recognises that creative ways of learning, respect for heritage and valuing and celebrating different world views are essential ingredients in all community processes. It also understands that strong, local economies require new skills and new approaches which in turn will lead to new opportunities and jobs. All of this requires a healthy natural base, the recreation of biodiversity and the wise management of our natural resources and urban design that achieves a lighter footprint on the earth.

Project Twin Streams vision and objectives are being delivered through a community development approach.

The underlying assumptions of Project Twin Streams are:

- Some goals will be achieved in the short and medium term (3-5 years) and others will be longer term (10-50 years).
- The community will embrace the community development approach.
- Success requires willingness from across Council to actively support the project.
- In adopting this community development programme additional resources (or reprioritisation of existing resources) may be required through the 2006/2016 Long Term Council Community Plan.

### **Planting and Maintenance Programme**

Over this planting season (April to November 2005) 75,569 plants have been planted. This has resulted in the revegetation of approximately 10,170 square metres of stream banks on the Swanson, Waikumete, Opanuku, Lower Oratia, Pixie and Henderson streams. Weed and maintenance programmes have also been carried out on 6,044 square metres of stream banks.

Over 50 percent of the planting has been undertaken by volunteers from local communities, schools, youth groups, scouts and guides, church groups, neighbourhood groups and individuals interested in revegetating the banks of their local streams.

Highlights for this period include the following:

- Planting undertaken by Rutherford High School at Pixie Stream. The school began planting the stream in 2004. Over this period they have planted in excess of 8,000 plants. The school has also commenced monitoring to assess the effect the revegetation has had on the stream. Pixie Stream is also being developed by Project Twin Streams as a demonstration site through the construction of bioretention (stormwater systems that use natural filtration through plants to clean up stormwater) prototype devices which are being monitored for stormwater treatment efficiency. There has also been construction of permeable paving using Permapave products.
- Princes Trust - a group of youth offenders, have been working on the Henderson Creek undertaking both planting and weeding. Over this season they have planted over 8,000 plants.
- Swanson Community have organised three very successful community planting days that attracted approximately 250 local residents and resulted in the planting of 5,927 plants.

### **Community Contracts and Community Engagement**

A key goal of Project Twin Streams is to foster community engagement in ways that are inclusive and meaningful for local neighbourhood communities and communities of interest. Community uptake is being achieved through working to engage and contract six locality-based community organisations to develop Project Twin Streams in their neighbourhoods. As well as co-ordinating community involvement in the weeding and maintenance of the stream banks, local contract holders will develop with their local communities' opportunities to integrate environmental awareness through music, arts, cultural, storytelling, youth, job creation and employment and training initiatives.

There are now three organisations that have community contracts with Project Twin Streams approved by the Tenders Subcommittee, as follows:

- Te Ūkaipō Mercy Initiatives for Rangatahi Limited in Ranui-Massey along the Swanson Stream from Birdwood Road to Huruhuru Creek.
- West Auckland District Council of Social Services in the Henderson area along the Henderson Creek.
- Corban Estate Arts Centre has recently signed a contract to deliver Project Twin Streams in the Henderson South area along the Lower Opanuku Stream.

Consultation is currently being undertaken in the Lower Oratia area and the Glen Eden area to ascertain how these local communities would like to engage with Project Twin Streams and to identify suitable organisations to undertake a community contract. The Swanson community is also exploring options for an appropriate organisation to take up a community contract. It is anticipated that by mid 2006 there will be six community organisations contracted to develop Project Twin Streams in their localities. This will cover the majority of the Catchment.

A snapshot of achievements from Te Ūkaipō Mercy Initiatives for Rangatahi Ltd (Ranui-Massey) and West Auckland District Council of Social Services (Henderson Creek) community contract organisations include the following:

- Establishing Project Twin Streams in their local communities.
- Ranui-Massey Project Twin Streams have held three extremely successful community planting & education days attracting approximately 400 residents including a large number of children. Local groups are also beginning to adopt sections of the stream. A programme for rangatahi (youth) at risk is working weekly on the stream banks doing weeding, planting and maintenance. It has been reported that there have been significant improvements in the students' behaviour and also their educational attainment from being involved in Project Twin Streams. At the end of one programme a rangatahi stated that "I have learnt to respect mother nature". A total of 8,972 plants have been planted by the local community covering approximately 4,740 square metres.
- West Auckland District Council of Social Services began their contract part way through the planting season. They have organised planting days with Flanshaw Road Primary School, Scouts and local residents. This has resulted in the planting of 2,500 plants. Two more small planting days are being planned before the end of the planting season.

The Community Contracts are being delivered at significantly lower costs than a commercial contract and unlike commercial contracts they have the potential to achieve outcomes across all four well beings.

### **Creative Processes**

The Project Twin Streams Community Arts Worker (a part time position initially funded externally through Sustainable Communities) has been working alongside the community contract organisations to develop and implement creative ways of engaging people in the project and developing understanding of the causes and means of addressing environmental degradation. Achievements of this position to date include the following:

- Working with children in the Ranui After-School Project who have made a mosaic gecko (mokomoko) that is now displayed outside the Ranui Community Centre. The children also drew pictures and wrote stories of their vision for the Swanson Stream. This has been put together into a book and entered into the OSCAR (National Association for After-School Care) competition.

- Children at Birdwood School have written and performed a rap about Project Twin Streams. Youth from the local youth group designed tee shirts that the younger children wore for their performance.
- Children at West Wave After-School have designed flags depicting how they see Henderson Creek. These flags have been sewn up by a group of trainee machinists.
- Working with West Auckland District Council of Social Services to organise a Celebrating Henderson Creek weekend that includes art displays, music, ecological and historical walks, painting, educational displays, a performance by the Waitakere Women's Choir and a parade and installation of the flags designed by the West Wave After-School.
- A significant number of people, particularly children, who are engaging with Project Twin Streams through the community arts projects, are also taking an active interest in planting days.

### **Cycle and Walkways**

As part of Project Twin Streams, an application was made to Infrastructure Auckland (now Auckland Regional Holdings) for \$5.2 million to construct 14.5 kilometres of cycle and walkways along the Opanuku, Oratia and Waikumete Streams. This application was approved in 2004.

Work has begun on stage one of the cycle & walkway programme. The routes for this stage will extend from:

- Great North Road alongside the Opanuku Stream, through the Corban Estate to Border Road.
- Millbrook Road, alongside the Oratia Stream to Parrs Cross Road, and from alongside the intersection of the Oratia and Waikumete Streams to Parrs Park.

Public consultation on the above routes occurred between 25 July 2005 and 23 September 2005 and on the Draft Lower Oratia Stream Reserves Management Plan. Over 500 people were consulted face to face and over 30 written submissions were received. Feedback on the Draft Lower Oratia Stream Reserve Management Plan and proposed cycle and walkways was overwhelmingly positive, with residents viewing them as a community asset which would enhance their local area and the City.

Key points from the consultation included the following:

- New planting should aim to achieve a balance between revegetating and ensuring maximum visibility and public safety. Stories should be developed to reflect local history, local plant, bird and animal life, local personalities, Maori legends and the cultures of people living in the area. Art works should be provided by local people and include mosaics, sculptures, art bridges and seating and carvings.
- Key safety issues - the need to provide regular exit points, providing enough room to accommodate walkers and cyclists, appropriate lighting, signage, fencing, handling dogs, combating vandalism, providing good maintenance, having full disability access and appropriate rails and surfaces. A professional safety and access audit was also undertaken for both routes.
- Use of the routes can be enhanced through providing seating, picnic and rest areas, park and play spaces, cycle racks, publicising the routes, holding events and high quality ongoing maintenance.

Detailed suggestions were also made for each route. This feedback is reflected and incorporated in the full consultation feedback report.

The second stage of the cycle and walkway network will extend from Border Road to Henderson Valley Road and from Harold Moody Park in Glen Eden to Ceramco Park. Community consultation on the proposed routes for this stage will begin in February 2006.

### **Property Buy Outs**

Following approvals from the Finance and Operational Performance Committee, Project Twin Streams commenced buying properties in the Serwayne Place/Millbrook Road area (2003), in Henderson Valley Road (2004) and Glen Eden (2005). To date the following properties have been acquired:

- **Henderson Valley - Opanuku Stream Area**

Sixteen properties are required for the project and nine have been purchased to date. The remaining seven properties are at various stages of negotiation. Contractors have now started to relocate seven of the acquired houses off site.

- **Serwayne Place Area - Oratia/Lower Waikumete Stream Area**

Twenty-six properties are required for the project and twenty-three have been purchased to date. The remainder are under negotiation.

#### **Glen Eden - Waikumete Stream Area**

Fifteen properties are required for the project between Harold Moody and Ceramco Parks and further twenty-one properties are required between 347 West Coast Road and Glendale Road.

Of the above, four have been purchased to date, a further three have reached agreement and the remainder are under negotiation.

To date the careful process used by Project Twin Streams in working with affected property owners has meant that it has not been necessary for Council to resort to using the Public Works Act to acquire any properties.

Discussions have begun with Housing New Zealand Corporation on the possibility of purchasing Project Twin Streams' houses for social housing requirements.

### **Relationship with Manawhenua & Iwi**

Te Kawerau a Maki and Ngati Whatua have both been engaged to prepare Cultural Heritage reports for the parts of the catchment covered by the cycle and walkways. Both iwi have in principle given their support for the project.

Meetings have been held with Hoani Waitiiti Kura Whanau and Te Whanau o Waipareira to begin discussions regarding their interests in Project Twin Streams. Each of the contracted community organisations is being encouraged and supported to develop relationships with local Maori in their own localities.

A training workshop for the Project Twin Streams team, other related Council staff and current and future contracted community organisations is being held at Te Piringatahi O Maungaarongo Marae in Massey. This workshop is an opportunity to share different cultural knowledge informing the development of Project Twins.

Project Twin Streams is working with other key stakeholders to support the recently established Maori Economic Development Project - Turuki Turuki Paneke Paneke - a joint venture between Te Kawerau a Maki and Te Piataata Trust (funded by Department of Internal Affairs). A number of the objectives for this project are aligned to Project Twin Streams.

### **Sustainable Auckland - Sustainable Communities**

Project Twin Streams has been selected as one of two demonstration sites for Sustainable Communities which is one of the work strands of Sustainable Auckland. This brings additional resources of \$65,000 a year for three years through direct funding. It also includes the re-alignment of existing central government resources to further the social, economic and cultural goals of Project Twin Streams.

The partnership with Sustainable Communities is enabling the implementation of the social, cultural and economic goals for Project Twin Streams. The focus for investment by Sustainable Communities in Project Twin Streams for 2005/2006 is to progress the economic goals. The first step is undertaking a short term contract in the first half of 2006 to identify and assess the viability and resourcing requirements for potential community economic development initiatives and develop project plans to take them forward.

### **ISSUES OF INTEREST TO WAITAKERE COMMUNITY BOARD**

#### **Swanson Planting Days**

The Swanson Community have organised three very successful community planting days which have resulted in the planting of 5,971 plants along Parklands Reserve. The planting days were a great community occasion with music, face painting, BBQ's with each event attracted around 100 community members.

A presentation was made to the Swanson Residents & Ratepayers in October 2005 and a recommendation made by the local planning group that a community contract be pursued with Council. Planning is underway to identify a suitable organisation who meets the Council criteria, to enter into a contract with.

Unfortunately a major slip on private land on Swanson Stream has affected the planting programme for the Swanson Primary School.

#### **Cycle & Walkways**

Public consultation is now completed for the first stage of the cycle and walkway project along Lower Oratia and Opanuku Streams (see above). The Lower Oratia Draft Reserve Management Plan was also been consulted on as part of this process. The Draft Plan was approved by the subcommittee on 27 October 2005. As extensive community consultation had occurred in the development of the draft plan only minor changes were needed for the final plan. Copies of the Lower Oratia Reserve Management Plan will be available within the next month.

### **RESOURCES**

The resources available are as follows:

- Funding of \$38.2 million has been allocated from Infrastructure Auckland (now Auckland Regional Holdings) for stormwater management, repair and restoration of 125 km of streams and to provide social and economic benefits as outline in the contract. A claim has just been submitted to Auckland Regional Holdings for \$7,112,000 for 2004/2005. This will make total of \$10 million that has been claimed to date.

- Funding of \$5.2 million has been allocated from Infrastructure Auckland for the construction of cycle and walkways along the Oratia, Opanuku and Waikumete streams.
- Direct funding of \$65,000 from Sustainable Communities for three years has been secured to progress agreed social, cultural and economic goals of the programme.
- A Community Advisor from Department of Internal Affairs has been made available to contribute up to 20 hours per week to progress agreed Project Twin Streams-Sustainable Communities goals.
- Funding of \$12 million from Financial Contributions.

### **CONCLUSION**

Project Twin Streams has evolved significantly from its original concept of riparian restoration to become a quadruple bottom line community development model for catchment restoration as a living example of sustainable development. The project is already becoming well known within the catchment, and although it is still in the establishment phase, it has made significant achievements which will increase exponentially each year.

### **RECOMMENDATION**

That the Project Twin Streams Update report be received.

Report prepared by: Tony Miguel, Group Manager: Asset Management.



## **11 PROJECT TWIN STREAMS CYCLE AND WALKWAYS PROGRAMME - UPDATE**

### **PURPOSE OF THE REPORT**

The purpose of this report is to provide the Waitakere Community Board an overview of the Project Twin Streams cycle and walkways programme, including an update on progress and a summary of public consultation feedback on Stage One of this programme, and to seek approval from the Waitakere Community Board as to the location of cycleways.

### **BACKGROUND**

Project Twin Streams is an innovative multi-faceted project that focuses on achieving long-term sustainable management of the Henderson Creek and Huruheru Creek catchments. This project integrates stormwater management with the planting and restoration of 125 kilometres of stream banks along the Oratia, Waikumete, Opanuku, Pixie and Swanson Streams. It does this through a community development model that seeks to involve local people in the long term care and maintenance of their local environment.

As part of Project Twin Streams, an application was made to Infrastructure Auckland (note that Infrastructure Auckland is now Auckland Regional Holdings, part of the Auckland Regional Council) for \$5.2 million to construct 14.5 kilometres of cycle and walkways along the Opanuku, Oratia and Waikumete Streams. This application was approved in 2004.

The Community Boards received an overview of Project Twin Streams' components, desired outcomes and progress in August 2005. This item describes in more detail the cycle and walkways programme being delivered through Project Twin Streams, and progress made to date.

## STRATEGIC CONTEXT

Project Twin Streams has been identified as one of Council's catalytic projects and will contribute to implementing the vision of Waitakere as an Eco City through all Council's strategic objectives and platforms. The vision for Project Twin Streams is *Healthy People in a Healthy Environment: Creating a Sustainable Future*.

The cycle and walkways contribute to the vision of Council's Walking and Cycling Strategy, for Waitakere City to be a "walking and cycling friendly" city, where cycle and walkways are safe, enjoyable and popular forms of transport and leisure. As these cycle and walkways are all being located close to key streams in the City, they should also bring local people closer to their local stream and natural environment, in order to appreciate and ultimately take greater care of it.

As part of Project Twin Streams, the cycle and walkways programme aims to model sustainable development principles enhancing human health, ecological restoration, community involvement and ownership, lowering car use and pollution, connecting people with their natural environment, linking safe spaces and places, revitalising economic centres, and fostering environmental awareness and action. Council's Arts Manager is involved in ensuring that the cycle and walk ways are imaginatively designed and that art works are incorporated into the routes.

## ISSUES

### Scope of the cycle and walkways programme

The cycle and walkway routes cover the following areas in two stages, and are all designed to follow alongside the Opanuku, Oratia or Waikumete Streams. Stormwater runoff will be filtered by swales or other devices prior to discharge to the environment.

The scope of works is as set out in the table below:

<b>Stage One</b>	<ul style="list-style-type: none"><li>• <b>The Lower Opanuku Walk-Cycleway</b> extends from Alderman Drive over the Great North Road intersection with Henderson Valley Road, through the Corban Estate and along the southern side of the Opanuku Stream to Border Road.</li><li>• <b>The Lower Oratia Walk-Cycleway</b> runs along the Millbrook Road reserve from the footbridge opposite the Waitakere Plaza (mainly along the existing carriageway), all the way to the intersection with Awaroa Road. At this intersection it proceeds under the existing Railway Bridge at the Sunnyvale Railway Station, then along the southern side of the Oratia Stream to Parrs Cross Road.</li><li>• <b>The Lower Waikumete Walk-Cycleway</b> runs from the intersection of the Millbrook/Awaroa Roads, along the eastern side of the Waikumete Stream up to Parrs Park.</li></ul>
<b>Stage Two</b>	<ul style="list-style-type: none"><li>• <b>The Upper Opanuku Walk-Cycleway</b> extends from the Border Road bridge, along the southern side of the Opanuku Stream up to Henderson Valley Road.</li><li>• <b>The Upper Waikumete Walk-Cycleway</b> runs along the eastern side Waikumete Stream between Harold Moody Park and Ceramco Park.</li></ul>

A38 The broad routes and alignments of the walk-cycleway networks are shown on attachment at page A38. The walk-cycleway networks are designed to connect users of the system with the various railway stations and commercial hubs within the City.

In order to establish these walk-cycleway links and to allow for the general riparian works required in Project Twin Streams, some private properties and parts of properties have had to be purchased in the areas of Sunnyvale, Glen Eden and Henderson Valley. These property purchases have been the subject of several reports to Council.

A39 There are a series of bridges required to be constructed to connect the walk-cycleways over the various streams. These are located on the plans shown on attachment at pages A39. The aim is for at least one of these bridges to be developed as an arts bridge, as for example in Corban Estate.

### **Development process**

Once the funding was received for the cycle and walkways, the process for both stages of the programme is as follows:

- Develop preliminary designs of the proposed routes.
- Begin the property purchase process through talks with affected landowners.
- Consult publicly on the proposed design and routes.
- Gather information needed for resource consents.
- Complete consultation and lodge resource consent applications.
- Once consent has been granted, begin construction.
- Open the cycle and walkways to the public.
- Ongoing maintenance (by Parks).

### **Current situation**

In terms of the programme, public consultation on stage one occurred between 25 July 2005 and 23 September 2005 (summarised below). All Elected Members were notified of this process. The resource consent application was lodged in October 2005, and construction can begin once consent has been given. Stage One construction should be completed by June 2006, with the aim to begin Stage Two construction around September 2006.

### **Consultation feedback on Stage One**

As part of Stage One consultation on the cycle and walkways, consultation was also undertaken on the draft Lower Oratia Stream Reserve Management Plan, as this covers a similar area to the Lower Oratia Stream cycle and walkway. The process and feedback from stage one consultation is summarised below.

The purpose of consulting was to ensure that the new cycle and walkways reflect community needs and wishes. Key consultation issues were safety and user friendliness, balancing the needs of varying users, reflecting local character, culture and stories along the routes, incorporating art works, developing community ownership of the areas and how best to maximise use of the cycle and walkways.

Consultation was based on aerial maps showing the proposed routes. Key consultation methods were two public drop-in days, face to face meetings with interested groups, web based information, information sent to local residents and written feedback forms.

Over 500 people were consulted face to face and over 30 written submissions were received. Feedback on the draft Lower Oratia Stream Reserve Management Plan and proposed cycle and walkways was overwhelmingly positive, with residents viewing them as a community asset which would enhance their local area and the City. Key points included the following:

- New planting should aim to achieve a balance between revegetating and ensuring maximum visibility and public safety. The work programme should include stories to reflect include local history, local plant, bird and animal life, local personalities, Maori legends and the cultures of people living in the area. Art works should be provided by local people and include mosaics, sculptures, art bridges and seating and carvings.
- Key safety issues include ensuring high use of the routes, the need to provide regular exit points, providing enough room to accommodate walkers and cyclists, appropriate lighting, signage, fencing, handling dogs, combating vandalism, providing good maintenance, having full disability access and appropriate rails and surfaces. A professional safety and access audit was also undertaken for both routes.
- Use of the routes can be enhanced through providing seating, picnic and rest areas, park and play spaces, cycle racks, publicising the routes, holding events and high quality ongoing maintenance.

Detailed suggestions were also made for each route. Community feedback has been incorporated in a consultation report.

## RESOURCES

Project Twin Streams is managed by Council. Funding is provided by the Council and by regional funding of \$5.2million, which is managed through Auckland Regional Holdings. Additional funding is currently being sought from Land Transport New Zealand.

## CONCLUSION

The completion of the cycle and walkways alongside the Opanuku, Oratia and Waikumete Streams will greatly enhance a strategic transportation network that links outlying areas with Henderson Central. Stage One of the programme is well advanced and is on track to meet funding deadlines for construction.

In order to formalise the consenting process, the Waitakere Community Board is requested to approve the location of the proposed cycle and walkways.

## RECOMMENDATIONS

1. That the Project Twin Streams Cycle and Walkways Programme – Update report be received.
2. That the Waitakere Community Board approve the location of the proposed Project Twin Streams cycle and walkways in the Waitakere Ward.

Report prepared by: Garry Peters, Sustainable Engineering Manager.



## 12 WAITAKERE WARD REVEGETATION PROGRAMME

### PURPOSE OF THE REPORT

The purpose of this report is to update the Waitakere Community Board regarding the revegetation programme and to approve the weed management and planting plans in the Massey Ward.

### BACKGROUND

This project involves the revegetation of key bush and esplanade reserves as identified in the draft Parks Strategy outside the Project Twin Streams areas. Works are programmed to complement the environmental weed control programme in protecting the environmental integrity of the Waitakere City's unique ecological systems.

The environmental weed control programme is a site-led programme based on protecting parks of high ecological value in Waitakere City. Intensive weed control has been carried out in these parks for a number of years including follow up weed control. Planting of ecosourced native plants is programmed to further reduce the likelihood of re-infestation of environmental weeds, to ensure the success of the programme and sustain ecological integrity.

### STRATEGIC CONTEXT

The 2020 vision for the Green Network platform states:

*"There will be a network of bush and trees (the Green Network) from the Ranges, through town centres and suburbs, to the coasts, bringing the natural world into people's everyday lives and filling the streams and forests with life."*

The revegetation programme has been set up for the implementation of this platform by increasing bush cover and the integrity of existing bush and open spaces along streams and coastal margins.

### SCOPE OF WORK

The parks programmed for revegetation in the Waitakere Ward in 2005/2006 financial year are Paremuka Esplanade and Astelia Grandis Reserve.

A40-A43 The proposed revegetation planting at Paremuka Esplanade (Brookwood Drive, Henderson) will be a continuation of stage one planting undertaken in 2004/2005 financial year. The planting plans are attached at Pages A40 to A43

A44-A59 Astelia Grandis Reserve (23 Chelmsley Avenue, Henderson) has been identified as a site of ecological importance being one of the few natural locations of *Astelia grandis*. The natural occurrence of *Astelia grandis* needs to be protected from smothering by weeds because of the importance of collecting seed for ecosourcing of native plants. The weed management and planting plans are attached at pages A44 to A59.

### RESOURCES

The revegetation programme is managed internally by Council staff. \$781,600 was allocated through the 2005/2006 Annual Plan for the purchase and planting of almost 100,000 ecosourced native plants. This budget also covers the cost of professional services fees for design and consent applications.

## CONCLUSION

The revegetation programme is closely aligned with Waitakere City Council's Green Network platform and helps to protect the integrity of Waitakere City's unique natural environment.

## RECOMMENDATIONS

1. That the Waitakere Ward Revegetation Programme report be received.
2. That the Waitakere Community Board approve the Paremuka Esplanade Planting Plan - Stage 2.
3. That the Waitakere Community Board approve the Astelia Grandis Reserve Weed Management and Planting Plan.

Report prepared by: Debbie Chapman, Asset Manager: Environmental.



## 13 BOARD MEMBERS' REPORTS

Provision has been made on this agenda for Board Members should they so wish to submit a report on their activities during the month in regard to matters within the scope and delegations of the Board. However, to comply with the provisions of the Local Government Official Information and Meetings Act 1987, no decision may be made on matters raised in Board Members' reports.

## WAITAKERE COMMUNITY BOARD APPOINTMENTS

OUTSIDE ORGANISATIONS	APPOINTMENT
Auckland Region and Far North Community Board Association Executive Committee	Christine Shepherd Diane Goodley
Glen Eden Citizen Advice Bureau	
Keep Waitakere Beautiful	Christine Shepherd
Huia/Cornwallis Local Water Agenda Steering Group	Robin Taylor Diane Goodley
McLaren Park Community Project Steering Group	Diane Goodley
Piha/Karekare Local Water Agenda Steering Group	Kubi Witten-Hannah Robin Taylor
The Weedfree Waitakere Trust	Diane Goodley
West Coast Plan Liaison Group	Monique Davis
Council/Police Liaison Group	Kubi Witten-Hannah
COUNCIL COMMITTEES	
Community Sport Fund Allocation Subcommittee	Monique Davis Diane Goodley
Hearings Committee	Robin Taylor Kubi Witten-Hannah
Kay Road Balefill Site Management Committee	Sharon Davies
Street Events Subcommittee	Monique Davis

