

5 December 2006

07 DEC 2006

Darryl Griffin

WAIKATO CITY COUNCIL

7 DEC 2006

To: Mayors, Chief Executive Officers and
Community Board Chairs
City and District Councils

INDICATIVE POOLS 2007/2008

I would like to thank the many councils who forwarded the information on financial data for the year ended 30 June 2006 in a timely manner. Unfortunately there were several which did not supply the information by the date requested and consequently this advice is a little later than we would have liked.

The enclosed tables set out the total indicative pools and Mayoral gross salary levels for the 2007/2008 financial year. In calculating the new levels the Authority has applied a base increase of 3.5% to adjustments which flow from changing relativities across the population/assets/expenditure calculations. In a few cases this has resulted in the indicative pool levels for 2007/2008 being less than those for 2006/2007. Where this has happened, the Authority has maintained the existing pool level through to the October 2007 elections. The reduced levels will apply after October 2007.

Would you please now consider the new figures and forward to the Authority, by 1 April 2007, your recommendations for the distribution of the indicative pool. (Forms enclosed.) Your assistance in meeting this deadline will enable the early issue of the new determination to be effective from 1 July 2007.

The determination we intend to issue in June 2007 will cover the period 1 July 2007 up to and including the date on which the results of the October 2007 elections are declared.

As a number of councils will have changes in the number of elected members or changes affecting community boards, the Authority intends to follow the practice used in 2004 and issue an interim determination to fix salaries to cover the period after the new councils come into office. The salary levels will be set at a conservative level to allow new councils to review committee structures, allocation of responsibilities and adjust to increased or reduced elected members. It is expected the interim determination will be promulgated in early August 2007.

A24

Remuneration Authority

PO Box 10084, Morrison Kent House, 105 The Terrace, Wellington 6143, New Zealand
Telephone 04 499 3068 Facsimile 04 499 3065 Email info@remauthority.govt.nz

New determinations to carry through to 30 June 2008 will be issued as soon as practicable once the Authority has had time to consider the recommendations from the incoming councils. Backdating of salary adjustments will normally be adopted to line up with the date on which relevant council decisions are made. Further advice on this process will be issued at the time the interim determination is issued.

Mayoral Cars

The Authority needs to obtain confirmation of details of any vehicle currently allocated to the Mayor. (Form enclosed.) It is important whenever a change in the Mayoral vehicle is authorised by council that the Authority be advised immediately in order that appropriate adjustments, up or down, can be made to the Mayoral net salary. This adjustment can only be validated through the issue of a determination.

Expenses Policy

The Authority will be writing to you in February 2007 concerning procedures we will put in place for the consideration and approval of council expenses policies.

Yours sincerely


David Doughton
Chairman

Chief Executive	<input checked="" type="checkbox"/>
Corporate Services	<input type="checkbox"/>
City Services	<input type="checkbox"/>
Community Services	<input type="checkbox"/>
ECO-CLUSTER	<input type="checkbox"/>
Strategic Group	<input type="checkbox"/>
Contract Services	<input type="checkbox"/>
Public Works	<input type="checkbox"/>

A25

REMUNERATION AUTHORITY - FUNDING FORMULAE AND FACTORS

District / City Council	---Population Calc---		----Expenses Calc----		--Gross Assets Calc--		---Rate of Change Calcs---		Change Factor
	Population 2005/06	Funding Weighting	Expenses (000)'s data entry	Funding Weighting	Assets (000)'s data entry	Funding Weighting	Population 2000/01	% of Change	
	12						7		
Auckland City	430,700	10.89%	484,645	11.71%	7,029,773	11.77%	388,600	10.78%	104.0%
Christchurch City	360,500	9.12%	329,713	7.81%	5,195,252	8.70%	335,240	7.53%	100.8%
Manukau City	339,400	8.58%	312,412	7.40%	3,478,758	5.82%	238,200	13.82%	107.1%
Wellington City	188,500	4.77%	286,329	6.78%	3,063,948	5.13%	171,100	10.17%	103.4%
North Shore City	215,300	5.44%	216,104	5.12%	3,040,525	5.09%	194,200	10.87%	104.1%
Waitakere City	194,700	4.92%	166,580	3.94%	2,158,193	3.61%	176,200	10.50%	103.7%
Dunedin City	122,900	3.11%	147,081	3.48%	2,432,078	4.07%	119,300	3.02%	100.0%
Hamilton City	133,700	3.38%	123,852	2.93%	1,570,110	2.63%	110,600	11.88%	105.1%
Hutt City	100,400	2.54%	92,994	2.20%	749,846	1.26%	99,100	1.31%	100.0%
Tauranga City	106,100	2.68%	94,787	2.24%	1,650,832	2.76%	93,300	13.72%	107.0%
New Plymouth District	69,600	1.76%	83,395	1.97%	1,503,679	2.52%	68,400	1.75%	100.0%
Palmerston North City	79,000	2.00%	73,834	1.75%	866,176	1.43%	75,200	5.05%	100.0%
Rodney District	91,500	2.31%	101,824	2.41%	1,343,438	2.25%	78,500	16.56%	109.6%
Hastings District	71,800	1.82%	63,825	1.51%	1,045,431	1.75%	69,600	3.16%	100.0%
Whangarei District	73,300	1.85%	91,584	2.17%	843,140	1.58%	70,000	4.71%	100.0%
Rotorua District	67,500	1.71%	75,520	1.79%	623,055	1.04%	66,900	0.90%	100.0%
Far North District	58,200	1.47%	70,381	1.67%	1,235,388	2.07%	56,400	3.18%	100.0%
Napier City	56,600	1.43%	59,932	1.42%	903,694	1.51%	56,200	2.54%	100.0%
Southland District	29,400	0.74%	47,068	1.11%	1,034,937	1.73%	29,400	0.00%	100.0%
Franklin District	58,500	1.48%	48,757	1.15%	816,326	1.37%	53,300	9.76%	103.0%
Invercargill City	50,800	1.28%	55,707	1.32%	565,450	0.95%	51,100	-0.59%	100.6%
Portraua City	50,700	1.28%	46,046	1.05%	506,743	0.85%	49,500	2.42%	100.0%
Kapiti Coast District	47,800	1.21%	34,545	0.82%	413,481	0.89%	43,600	8.63%	102.9%
Wanganui District	43,200	1.09%	60,549	1.20%	633,966	1.06%	44,400	-2.70%	102.7%
Timaru District	42,900	1.08%	46,272	1.10%	641,564	1.07%	42,800	0.23%	100.0%
Waipa District	42,700	1.08%	36,262	0.91%	603,455	1.01%	41,400	3.14%	100.0%
Waikato District	42,600	1.09%	45,872	1.09%	760,107	1.27%	41,300	3.63%	100.0%
Taupo District	34,100	0.86%	48,317	1.17%	864,956	1.45%	32,500	4.92%	100.0%
Thames-Coromandel District	26,800	0.68%	47,943	1.13%	699,327	1.17%	25,800	3.88%	100.0%
Western Bay of Plenty	42,900	1.08%	43,177	1.02%	647,887	1.08%	38,300	9.16%	102.4%
Queenstown-Lakes District	24,500	0.63%	45,686	1.08%	582,115	0.97%	17,850	38.94%	132.2%
Waimakariri District	43,100	1.09%	36,393	0.86%	663,596	1.11%	37,900	13.72%	107.0%
Whakatane District	33,900	0.86%	41,428	0.88%	355,441	0.60%	34,000	-0.29%	100.3%
South Taranaki District	27,100	0.69%	32,644	0.77%	501,604	0.84%	28,400	-4.58%	104.6%
Selwyn District	32,700	0.83%	31,300	0.74%	654,113	1.10%	28,300	15.55%	108.8%
Papakura District	43,900	1.11%	25,497	0.60%	371,181	0.62%	42,300	3.78%	100.0%
Matamata - Piako District	30,300	0.77%	26,837	0.69%	390,479	0.65%	30,300	0.00%	100.0%
Upper Hutt City	36,000	0.96%	29,578	0.70%	315,948	0.53%	37,700	0.80%	100.0%
Manawatu District	28,500	0.72%	30,183	0.71%	447,431	0.75%	28,200	1.06%	100.0%
Taranaki District	17,450	0.44%	25,480	0.60%	667,159	1.12%	18,350	-4.90%	104.9%
Ashterton District	27,200	0.69%	24,329	0.58%	408,715	0.68%	26,000	4.62%	100.0%
Waitaki District	19,700	0.50%	28,598	0.68%	566,932	0.95%	20,500	-3.90%	103.9%
Horowhenua District	30,500	0.77%	21,129	0.50%	324,771	0.54%	30,600	-0.33%	100.3%

A26

REMUNERATION AUTHORITY - FUNDING FORMULAE AND FACTORS

District / City Council	---Population Calc---		----Expenses Calc----		--Gross Assets Calc--		---Rate of Change Calca---		
	Population 2005/06	Funding Weighting	Expenses (000)'s	Funding Weighting	Assets (000)'s	Funding Weighting	Population 2000/01	% of Change	Change Factor
	12		data entry		data entry		7		
Masterton District	23,200	0.59%	22,619	0.54%	389,779	0.65%	23,200	0.00%	100.0%
Central Otago District	15,250	0.39%	20,332	0.48%	439,446	0.74%	14,750	3.39%	100.0%
Hauraki District	16,650	0.42%	26,475	0.60%	319,427	0.53%	17,250	-3.48%	103.5%
Rangitikei District	14,350	0.36%	26,375	0.62%	432,762	0.72%	15,500	-7.42%	107.4%
Clutha District	17,050	0.43%	25,973	0.61%	771,809	1.29%	17,550	-2.85%	102.8%
Ruepenu District	12,650	0.32%	19,969	0.47%	262,200	0.44%	15,000	-15.67%	115.7%
Kaipara District	18,050	0.46%	27,617	0.65%	296,729	0.50%	17,950	0.56%	100.0%
South Waikato District	22,300	0.56%	19,271	0.46%	223,066	0.37%	24,200	-7.85%	107.9%
Central Hawkes Bay	13,200	0.33%	17,218	0.41%	547,895	0.92%	13,200	0.00%	100.0%
Westland District	7,860	0.20%	11,246	0.27%	235,984	0.40%	7,990	-1.63%	101.6%
Hurunui District	11,000	0.28%	19,283	0.46%	254,370	0.43%	10,150	8.37%	101.6%
Waitomo District	9,540	0.24%	15,908	0.38%	259,450	0.43%	9,780	-2.45%	102.5%
Buller District	9,570	0.24%	16,928	0.40%	204,723	0.34%	9,860	-2.94%	102.9%
Grey District	13,100	0.33%	17,773	0.42%	207,414	0.35%	13,200	-0.76%	100.8%
Gore District	12,250	0.31%	11,863	0.28%	238,426	0.40%	12,750	-3.92%	103.9%
Waikato District	6,990	0.18%	9,396	0.22%	275,778	0.46%	7,220	-3.19%	103.2%
Waioira District	8,230	0.21%	16,302	0.39%	169,805	0.28%	9,280	-11.12%	111.1%
Banks Peninsula District				0.00%		0.00%			
South Wairarapa District	8,810	0.22%	11,609	0.27%	173,667	0.29%	8,940	-1.45%	101.5%
Otorohanga District	9,450	0.24%	10,761	0.25%	180,099	0.30%	9,590	-1.46%	101.5%
Opotiki District	9,400	0.24%	7,312	0.17%	129,938	0.22%	9,540	-1.47%	101.5%
Stratford District	8,460	0.21%	9,271	0.22%	203,145	0.34%	9,110	-7.14%	107.1%
Mackenzie District	3,710	0.09%	7,876	0.19%	101,948	0.17%	3,790	-2.11%	102.1%
Carterton District	7,210	0.18%	7,365	0.17%	105,755	0.18%	7,000	3.00%	100.0%
Kawerau District	6,420	0.16%	6,721	0.16%	43,365	0.07%	7,290	-11.93%	111.9%
TOTALS	3,954,150	100.00%	4,224,256	100.00%	59,727,864	100.00%	3,704,010	6.75%	

A27

REMUNERATION AUTHORITY - FUNDING FORMULAE AND FACTORS - SUMMARY

District / City Council	Population	Expenses	Assets	Change Factor	Total Points	Indicative Pool	Mayor's Salary
Auckland City	430,700	305,591	158,233	104.02%	930,515	1,742,221	163,418
Christchurch City	360,500	203,696	116,940	100.78%	686,460	1,581,844	156,590
Manukau City	339,400	193,008	78,303	107.06%	653,845	1,555,297	155,523
Wellington City	188,500	176,894	68,966	103.42%	449,199	1,303,396	146,178
North Shore City	215,300	133,509	68,439	104.11%	434,404	1,280,870	145,366
Waikare City	194,700	102,913	48,579	103.75%	359,161	1,141,883	138,210
Dunedin City	122,900	90,873	54,744	100.00%	268,516	941,093	123,679
Hamilton City	133,700	76,516	35,342	105.13%	258,153	915,176	121,425
Hutt City	100,400	57,452	16,878	100.00%	174,730	688,628	102,378
Tauranga City	106,100	58,565	37,158	106.97%	215,883	809,460	112,232
New Plymouth District	69,600	51,521	33,844	100.00%	154,965	628,452	97,538
Palmerston North City	79,000	45,615	19,272	100.00%	143,886	594,720	94,824
Rodney District	91,500	62,907	30,239	109.81%	202,755	773,954	109,242
Hastings District	71,800	39,431	23,532	100.00%	134,763	566,942	92,590
Whangarei District	73,300	56,580	21,229	100.00%	151,110	616,713	96,593
Rotorua District	67,500	46,841	14,024	100.00%	128,366	547,466	91,023
Far North District	58,200	43,481	27,807	100.00%	129,489	550,884	91,298
Napier City	56,600	37,026	20,341	100.00%	113,967	503,627	87,496
Southland District	29,400	29,079	23,295	100.00%	81,774	397,202	77,818
Franklin District	58,500	30,122	18,375	103.00%	110,210	492,187	86,576
Invercargill City	50,800	34,416	12,728	100.59%	98,518	454,565	83,280
Porirua City	50,700	28,447	11,406	100.00%	90,553	427,279	80,682
Tairāwhiti Coast District	47,800	21,342	9,307	102.88%	80,708	393,551	77,470
Tangahua District	43,200	31,229	14,270	102.70%	91,096	429,139	80,859
Timaru District	42,900	28,587	14,441	100.00%	85,927	411,432	79,173
Waipa District	42,700	23,638	13,583	100.00%	79,921	390,856	77,214
Waikato District	42,800	28,340	17,109	100.00%	88,249	419,384	79,930
Taupo District	34,100	30,468	19,469	100.00%	84,037	404,956	78,556
Thames-Coromandel District	26,800	29,619	15,741	100.00%	72,160	364,269	74,682
Western Bay of Plenty	42,900	26,675	14,583	102.41%	86,184	412,309	79,257
Queenstown-Lakes District	24,800	28,225	13,103	132.18%	87,409	416,507	79,656
Waimakariri District	43,100	22,484	14,937	106.97%	86,130	412,125	79,239
Whakotane District	33,900	25,593	8,001	100.29%	67,692	348,962	73,224
South Taranaki District	27,100	20,167	11,291	104.58%	61,238	326,853	71,119
Sewyn District	32,700	19,337	14,723	108.79%	72,632	365,884	74,836
Papakura District	43,900	15,752	8,355	100.00%	68,007	350,040	73,327
Maramata - Piako District	30,300	17,877	8,789	100.00%	56,967	312,219	69,726
Upper Hutt City	38,000	18,273	7,112	100.00%	63,385	334,206	71,819
Manawatu District	28,500	18,647	10,071	100.00%	57,218	313,081	69,808
Taranaki District	17,450	15,729	15,017	104.90%	50,560	290,200	67,563
Ashburton District	27,200	15,030	9,200	100.00%	51,430	293,253	67,920
Waikato District	19,700	17,668	12,761	103.90%	52,085	295,496	68,133
Horowhenua District	30,500	13,053	7,310	100.33%	51,030	291,882	67,789
Masterton District	23,200	13,974	8,774	100.00%	45,947	273,644	65,294
Central Otago District	15,250	12,561	9,891	100.00%	37,703	244,049	61,238
Hauraki District	16,650	15,738	7,190	103.48%	40,955	255,724	62,838
Rangitikei District	14,350	16,294	9,741	107.42%	43,382	264,434	64,031
Clutha District	17,050	16,046	17,373	102.85%	51,907	294,885	68,075
Ruapehu District	12,650	12,349	5,902	115.67%	35,742	237,013	60,273
Kaipara District	18,050	17,062	6,679	100.00%	41,791	258,724	63,249
South Waikato District	22,300	11,906	5,021	107.85%	42,306	260,574	63,502
Central Hawkes Bay	13,200	10,637	12,333	100.00%	36,170	238,548	60,483
Westland District	7,860	6,948	5,312	101.63%	20,447	182,112	52,748
Hurunui District	11,000	11,913	5,726	101.62%	29,103	213,182	57,007
Waitomo District	9,540	9,827	5,840	102.45%	25,825	201,417	55,394
Butler District	9,570	10,457	4,608	102.94%	25,360	199,746	55,165
Grey District	13,100	10,980	4,669	100.76%	28,967	212,693	56,940
Gore District	12,250	7,323	5,367	103.82%	25,918	201,748	55,440
Waimate District	8,990	5,805	6,207	103.19%	19,608	179,100	52,336
Waioa District	8,230	10,071	3,822	111.12%	24,584	196,963	54,784
	-	-	-	0.00%	-	-	-
South Wairarapa District	8,810	7,172	3,909	101.45%	20,180	181,155	52,617
Orohanga District	9,450	6,648	4,054	101.46%	20,446	182,110	52,748
Opotiki District	9,400	4,517	2,925	101.47%	17,089	169,256	50,828
Stratford District	8,460	5,728	4,573	107.14%	20,099	180,863	52,577
Mackenzie District	3,710	4,866	2,295	102.11%	11,100	143,964	46,617
Carterton District	7,210	4,550	2,380	100.00%	14,141	158,804	48,755
Kawerau District	6,420	4,152	976	111.93%	12,927	151,677	47,902
TOTALS	3,954,150	2,609,739	1,344,411		8,156,982	31,170,845	5,376,104

DISTRICT/CITY COUNCILS

Variables

Weightings	Points
Population	3,954,150
Expenses	2,609,739
Assets Gross	1,344,411
	7,908,300

X and Y for Change Factor

Change factor weighting for larger than	100%
Change factor weighting for negatives	100%

Indicative Pool - Points to remuneration

Points	Rate	Max
Fiat Base		
18,360	4.223	97,091
51,000	3.589	77,531
103,836	3.426	183,058
207,672	3.045	364,061
311,508	2.501	680,204
415,344	1.957	939,893
519,180	1.523	1,143,128
623,016	1.158	1,301,230
726,852	0.814	1,421,483
830,688	0.705	1,506,000
934,524	0.544	1,579,226
1,038,360	0.544	1,635,680
		1,692,134

Mayor's Salary - Points to remuneration

Points	Rate	Max
Fiat Base		
18,360	0.703	38,813
51,000	0.492	12,909
103,836	0.326	25,090
207,672	0.245	42,325
311,508	0.217	67,757
415,344	0.109	90,339
519,180	0.055	101,630
623,016	0.043	107,330
726,852	0.033	111,824
830,688	0.033	115,223
934,524	0.033	118,621
1,038,360	0.021	120,813
	0.021	123,006

A29

Revised Elected Members Remuneration 2007

Total Remuneration Pool 1,141,883

Mayor's Salary 138,210

Details	Number	Current Salary	Percentage Increase	Change	Revised Salary	Total	Total from Pool
Council							
Mayor	1	132,151	(Fixed)	5,694	138,210	138,210	138,210
Deputy Mayor	1	73,087	6.07400000%	4,440	77,527	77,527	77,527
Standing Committees							
Chair City Development	1	69,765	6.07400000%	4,238	74,003	74,003	74,003
Chair Planning & Regulatory	1	69,765	6.07400000%	4,238	74,003	74,003	74,003
Chair Finance & Op Performance	1	69,765	6.07400000%	4,238	74,003	74,003	74,003
A30 Committees							
Chair Hearings	1	59,300	6.07400000%	3,602	62,902	62,902	62,902
Minor Committees							
Chair Projects Special	1	59,300	6.07400000%	3,602	62,902	62,902	62,902
Chair Arts Special	1	59,300	6.07400000%	3,602	62,902	62,902	62,902
Chair Emergency Services	0	0		0	0	0	0
Chair Performance Review	0	0		0	0	0	0
Chair Tenders	0	0		0	0	0	0
Chair LTCCP & Annual Plan	0	0		0	0	0	0
Other Councillors	7	48,012	6.07400000%	2,916	50,928	356,498	356,498
Massey Community Board							
Chair	1	22,591	6.07400000%	1,372	23,963	23,963	11,982
Members	5	11,628	6.07400000%	706	12,334	61,671	30,836
Waitakere Community Board							

Revised Elected Members Remuneration 2007

Total Remuneration Pool 1,141,883

Mayor's Salary 138,210

Chair	1	22,591	6.07400000%	1,372	23,963	23,963	11,982
Members	5	11,628	6.07400000%	706	12,334	61,671	30,836

Henderson Community Board

Chair	1	22,591	6.07400000%	1,372	23,963	23,963	11,982
Members	4	11,628	6.07400000%	706	12,334	49,337	24,669

New Lynn Community Board

Chair	1	22,591	6.07400000%	1,372	23,963	23,963	11,982
Members	4	11,628	6.07400000%	706	12,334	49,337	24,669

Total from Pool 1,300,818 1,141,883

A31

Elected Members Remuneration

Total Remuneration Pool

1,141,883

Yellow Cells are Fixed Data

Mayor's Salary

138,210

Green Cells are Variables

Details	Percentage Increase on Standing Committees	Number	Percentage of Mayor's Gross Salary	Percentage of Standing Committee Chairs	Salary	Current	Change	Total	Total from Pool
Council									
Mayor		1	100.000%		138,210	132,151	6,059	138,210	138,210
Deputy Mayor	10.000%	1	55.000%		76,016	69,551	6,465	76,016	76,016
Standing Committees									
Chair City Development		1	52.500%		72,560	66,390	6,170	72,560	72,560
Chair Planning & Regulatory		1	52.500%		72,560	66,390	6,170	72,560	72,560
Chair Finance & Policy		1	52.500%		72,560	66,390	6,170	72,560	72,560
Committees									
Chair Hearings		1		85.000%	61,676	56,431	5,245	61,676	61,676
Minor Committees									
Chair Projects Special		1		85.000%	61,676	56,431	5,245	61,676	61,676
Chair Arts Special		1		85.000%	61,676	56,431	5,245	61,676	61,676
Chair Emergency Services				75.000%	0			0	0
Chair Performance Review				75.000%	0			0	0
Chair Tenders				75.000%	0			0	0
Chair LTCCP & Annual Plan				85.000%	0			0	0
Other Councillors		7			52,731	45,689	7,042	369,120	369,120
Massey Community Board									
Chair		1	17.000%		23,496	21,498	1,998	23,496	11,748
Members		5	8.750%		12,093	11,065	1,028	60,465	30,233

Waitakere Community Board

Chair	1	17.000%	23,496	21,498	1,998	23,496	11,748
Members	5	8.750%	12,093	11,065	1,028	60,465	30,233

Henderson Community Board

Chair	1	17.000%	23,496	21,498	1,998	23,496	11,748
Members	4	8.750%	12,093	11,065	1,028	48,372	24,186

New Lynn Community Board

Chair	1	17.000%	23,496	21,498	1,998	23,496	11,748
Members	4	8.750%	12,093	11,065	1,028	48,372	24,186

Total from Pool	37					1,297,712	1,141,883
------------------------	-----------	--	--	--	--	------------------	------------------

A33

NEW ZEALAND COMMUNITY BOARDS' CONFERENCE 2007

REGISTRATION FORM

Section A: Delegate Details

Title (please tick) Dr Mr Mrs Ms Miss Other _____

Surname _____ **First Name** _____

Board Member / Organisation _____

Position _____

Postal Address _____

City _____ **Postcode** _____

Telephone (e.g 09 555 5555) _____ **Facsimile** (e.g 09 555 5555) _____

Email _____

Special Requirements (dietary, mobility) _____

7-9 June 2007
TelstraClear Pacific Events Centre
Manukau City
GST No. 51-963-660

How to Register

Internet
www.ignz.co.nz/communityboards
Credit card payment on secure site

Fax
09 360 1242
Payment by credit card.

Mail
New Zealand Community Boards'
Conference 2007
PO Box 90040, Auckland
Payment by credit card or cheque

Section B: Conference Registration

Please tick the appropriate box to indicate your registration type.

	Early Bird Fee <small>(Payment received prior to/on 31 March 2007)</small>	Standard Fee <small>(Payment received after 31 March 2007)</small>
Full Registration including Conference Gala Awards dinner and Auckland Highlights by Night Tour	<input type="radio"/> \$575.00 + GST (\$646.88)	<input type="radio"/> \$665.00 + GST (\$748.13)
Full Registration including Conference Gala Awards dinner but excluding Auckland Highlights by Night Tour	<input type="radio"/> \$500.00 + GST (\$562.50)	<input type="radio"/> \$590.00 + GST (\$663.75)
Section B: Sub Total	\$ _____	

Section C: Social Function

This function is inclusive for all full registrations. please confirm your intention to attend this function and how many guest tickets you require (if any).

	Inclusive Ticket Confirmed	Guest Tickets Required	Total
Conference Gala Awards dinner and Official Opening Thursday, 7 June, 5.30pm – 11.00pm	<input type="radio"/> Yes <input type="radio"/> No	_____ @ \$95.00 + GST (\$106.87)	\$ _____
Section C: Sub Total			\$ _____

Section D: Social Activities

Tours are optional and not included in your registration. Please indicate your interest to attend these social events.

	Guest Tickets Required	Total
Villa Maria Vineyard Function and Wine Tour Friday, 8 June, 6.00pm – 8.00pm	_____ @ \$50.00 + GST (\$56.25)	\$ _____
Shopping at Botany Downs Friday, 8 June, 9.30am – 1.30pm	_____ @ \$30.00 + GST (\$33.75)	\$ _____
Discover Butterfly Creek Saturday, 9 June, 9.30am – 1.30pm	_____ @ \$35.00 + GST (\$39.37)	\$ _____
Section D: Sub Total		\$ _____

Section E: Payment

All fees are payable in NZ\$ and include New Zealand Goods and Services Tax (12.5%).

Total Section B: Conference Registration Sub Total	\$ _____
Total Section C: Social Function Sub Total	\$ _____
Total Section D: Social Activities Sub Total	\$ _____
Total Amount Payable	\$ _____

Please find attached a cheque payable to: *The Conference Company Ltd*

Please charge my credit card:

American Express

Diners

Mastercard

Visa

Card Number _____

Cardholder's Name _____

Expiry Date (MM/YY) _____

Authorised Amount \$ _____

Signature _____

Date _____

Section F: Concurrent Workshops

Please indicate your intention to attend the Concurrent Workshops as numbers are limited per session.

Friday 8 June 2007 11.00am – 12.30pm Please indicate your 1 st , 2 nd & 3 rd preferences	<input type="radio"/> W1	<input type="radio"/> W2	<input type="radio"/> W3	<input type="radio"/> W4	<input type="radio"/> W5	<input type="radio"/> W6	<input type="radio"/> W7	<input type="radio"/> W8	<input type="radio"/> W9	/
Friday 8 June 2007 3.00pm – 4.30pm Please indicate your 1 st , 2 nd & 3 rd preferences	<input type="radio"/> W1	<input type="radio"/> W2	<input type="radio"/> W3	<input type="radio"/> W4	<input type="radio"/> W5	<input type="radio"/> W6	<input type="radio"/> W7	<input type="radio"/> W8	<input type="radio"/> W9	<input type="radio"/> W10
Saturday 9 June 2007 11.00am – 12.30pm Please indicate your 1 st , 2 nd & 3 rd preferences	<input type="radio"/> W1	<input type="radio"/> W2	<input type="radio"/> W3	<input type="radio"/> W4	<input type="radio"/> W5	<input type="radio"/> W6	<input type="radio"/> W7	<input type="radio"/> W8	<input type="radio"/> W9	/
Saturday 9 June 2007 1.45pm – 3.15pm Please indicate your 1 st , 2 nd & 3 rd preferences	<input type="radio"/> W1	<input type="radio"/> W2	<input type="radio"/> W3	<input type="radio"/> W4	<input type="radio"/> W5	<input type="radio"/> W6	<input type="radio"/> W7	<input type="radio"/> W8	<input type="radio"/> W9	/

Section G: Car Parking

Please indicate the number of complimentary parking tickets you require.

	Thursday	Friday	Saturday
Car Parking Ticket	_____ required	_____ required	_____ required

Section H: Accommodation Booking

To make a reservation, please contact the Auckland Airport Centra Hotel directly and quote reference number 27023

Auckland Airport Centra Hotel

Phone: Reservations 09 275 1059

Email: reservations@akl-airport.centra.co.nz

Standard Room \$130.00 (incl. GST) per night

You & Your Privacy

The Privacy Act 1993 provides that, before your name and address details can be published in the list of delegates for distribution to other conference participants, you must give your consent. If this box is NOT ticked it is assumed that you agree to have your details published in the list.

If you DO NOT wish your details to be included in the list of delegates, please tick here.

Contact Us

For enquiries about registration or accommodation please contact the Conference Managers

Email: nzcb@tcc.co.nz

Phone: 09 360 1240

Fax: 09 360 1242

New Zealand Community Boards' Conference 2007 Programme

Time	Thursday 7 June 2007		
5.30pm – 11.00pm	Conference Gala Awards dinner and official opening		
Time	Friday 8 June 2007		
8.30am	Welcome		
8.45am	Community Boards providing energetic leadership for a safe and healthy community. <i>NZCB Chair, Yvonne Palmer.</i>		
9.00am	Housing New Zealand and Local Government Partnerships for Safer Housing. <i>Pat Snedden, Chairman, Housing New Zealand Corporation</i>		
9.45am	Education and children contributing to a safer community. World Health Organisation winner award recipient. <i>Graeme Barber, Principal Woodend School</i>		
10.30am	Morning Tea		
11.00am	Concurrent Workshops		
11.00am – 12.30pm	W1. Community Development - Implementing practical and sustainable tools to retain a safer school and WHO accreditation. <i>Graeme Barber, Principal, Woodend School</i>	W2. Targeting local and national resources to young people – birth to youth. <i>Judge Andrew Becroft, Principal Youth Court Judge</i>	W3. Are you an effective advocate for your community? <i>Jennifer Michel, Age Concern</i>
	W4. Crime Prevention through Environment Design (CPTED) - the role of community boards. <i>Inspector Tony Lake, Queensland Police Service</i>	W5. Effective advocacy earns re-election - practical tips for the elections. <i>Carole Evans, Deputy Mayor of Christchurch</i>	W6. Creative Ideas – thinking outside the square to reduce crime. <i>Supt Sandra Manderson, NZ Police / Garry Moore, Mayor Christchurch City</i>
	W7. The value of using the Local Government Act and the Resource Management Act together in achieving positive community results. <i>Jenny Rowan, Ministry of Justice / Jan Crawford, Planning Consultants</i>	W8. A safer and friendlier community through being prepared for a pandemic. <i>William Rainger, FAFPHM</i>	W9. Positive approaches to achieve pedestrian safety. <i>Tim Hughes, Land Transport Safety Authority</i>
12.30pm	Lunch		
	MSD Youth Initiatives in Communities. <i>Robyn Rusher, Ministry for Social Development</i>		

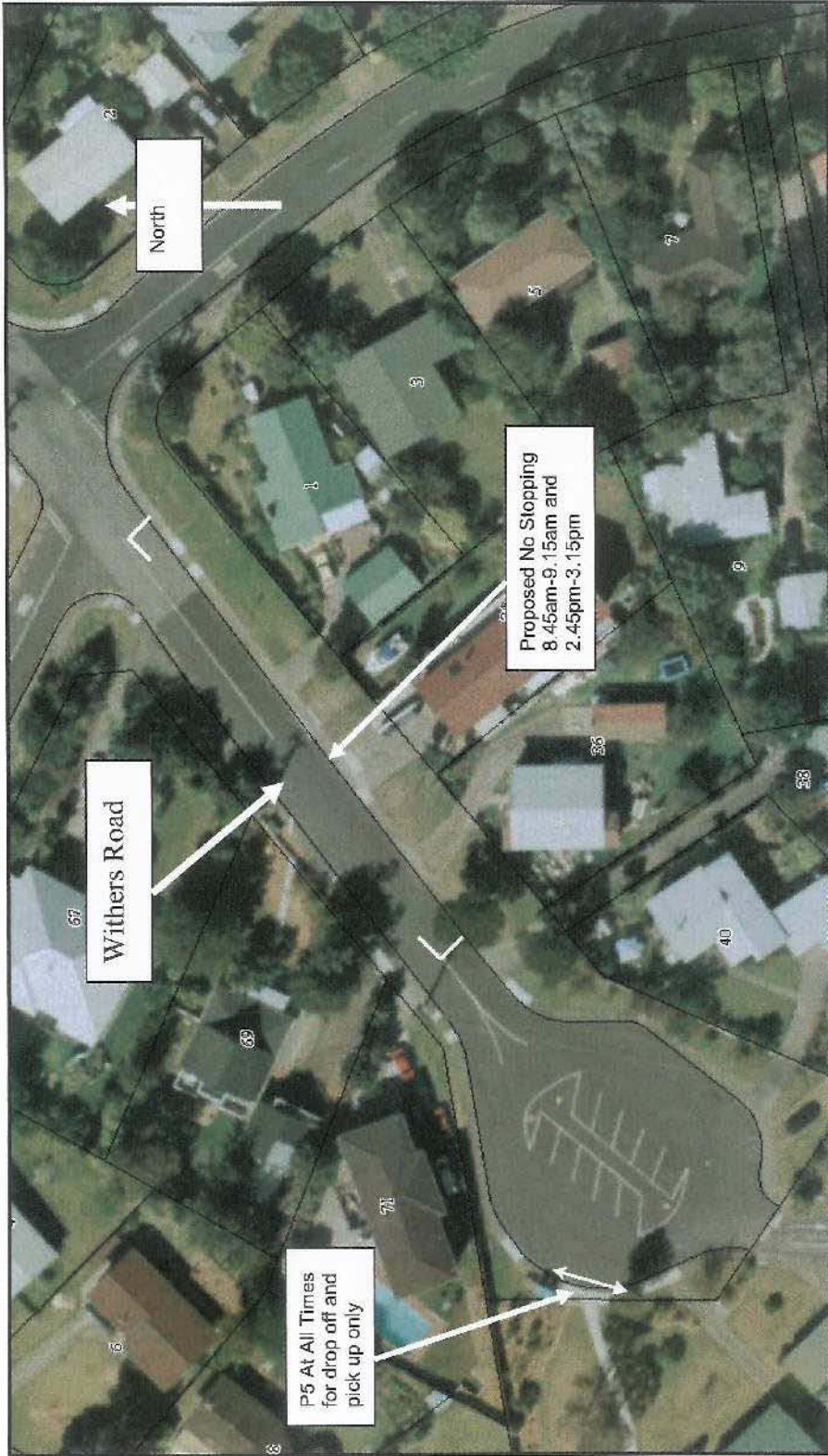
1.15pm	Targeting local and national resources to young people – birth to youth. <i>Judge Andrew Becroft, Principal Youth Court Judge</i>		
2.00pm	Elder abuse in our communities. Advocating to protect the rights of the elderly in our communities. <i>Jennifer Michel, Age Concern</i>		
2.30pm	Afternoon tea		
3.00pm	Concurrent Workshops		
3.00pm – 4.30pm	W1. Community Development - Implementing practical and sustainable tools to retain a safer school and WHO accreditation. <i>Graeme Barber, Principal, Woodend School</i>	W2. Targeting local and national resources to young people – birth to youth. <i>Judge Andrew Becroft, Principal Youth Court Judge</i>	W3. Are you an effective advocate for your community? <i>Jennifer Michel, Age Concern</i>
	W4. Crime Prevention through Environment Design (CPTED) - the role of community boards. <i>Inspector Tony Lake, Queensland Police Service</i>	W5. Effective advocacy earns re-election - practical tips for the elections. <i>Carole Evans, Deputy Mayor of Christchurch</i>	W6. Creative Ideas – thinking outside the square to reduce crime. <i>Supt Sandra Manderson, NZ Police / Garry Moore, Mayor Christchurch City</i>
	W7. The value of using the Local Government Act and the Resource Management Act together in achieving positive community results. <i>Jenny Rowan, Ministry of Justice / Jan Crawford, Planning Consultants</i>	W8. A safer and friendlier community through being prepared for a pandemic. <i>William Rainger, FAFPHM</i>	W9. Positive approaches to achieve pedestrian safety. <i>Tim Hughes, Land Transport Safety Authority</i>
	W10. The role of staff in servicing and providing community boards' advice. <i>Mike Reid / Peter Dow</i>		
4.30pm – 5.15pm	Community development tools for community participation in decision making. <i>Dr. Love Chile, Auckland University of Technology</i>		
6.00pm – 8.00pm	Villa Maria Vineyard Function and Tour		

Time	Saturday 9 June 2007		
7.30am	Sector Meeting Breakfast		
9.00am	Police need community partnerships for crime and crash reduction. <i>Howard Broad, Commissioner of Police</i>		
9.45am	A safer and friendlier community through being prepared for a pandemic. <i>William Rainger, FAFPHM</i>		
10.30am	Morning Tea		
11.00am	Concurrent Workshops		
11.00am – 12.30pm	W1. Community Development - Implementing practical and sustainable tools to retain a safer school and WHO accreditation. <i>Graeme Barber, Principal, Woodend School</i>	W2. Targeting local and national resources to young people – birth to youth. <i>Judge Andrew Becroft, Principal Youth Court Judge</i>	W3. Are you an effective advocate for your community? <i>Jennifer Michel, Age Concern</i>
	W4. Crime Prevention through Environment Design (CPTED) - the role of community boards. <i>Inspector Tony Lake, Queensland Police Service</i>	W5. Effective advocacy earns re-election - practical tips for the elections. <i>Carole Evans, Deputy Mayor of Christchurch</i>	W6. Creative Ideas – thinking outside the square to reduce crime. <i>Supt Sandra Manderson, NZ Police / Garry Moore, Mayor Christchurch City</i>
	W7. The value of using the Local Government Act and the Resource Management Act together in achieving positive community results. <i>Jenny Rowan, Ministry of Justice / Jan Crawford, Planning Consultants</i>	W8. A safer and friendlier community through being prepared for a pandemic. <i>William Rainger, FAFPHM</i>	W9. Positive approaches to achieve pedestrian safety. <i>Tim Hughes, Land Transport Safety Authority</i>
12.30pm	Lunch		
1.15pm	Positive approaches to pedestrian safety. <i>Tim Hughes, Land Transport Safety Authority</i>		

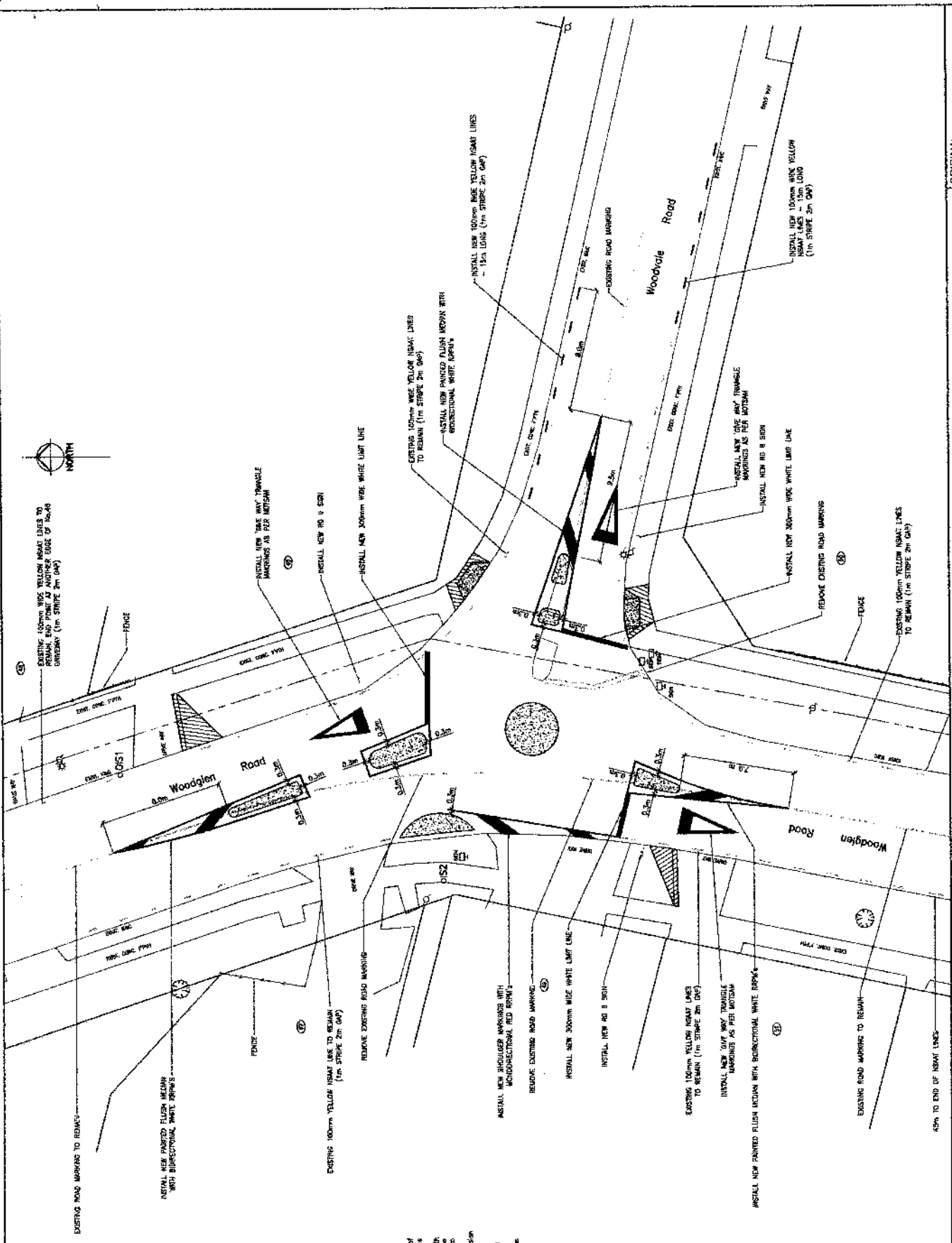
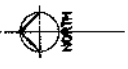
1.45pm	Concurrent Workshops		
1.45pm – 3.15pm	W1. Community Development - Implementing practical and sustainable tools to retain a safer school and WHO accreditation. <i>Graeme Barber, Principal, Woodend School</i>	W2. Targeting local and national resources to young people – birth to youth. <i>Judge Andrew Becroft, Principal Youth Court Judge</i>	W3. Are you an effective advocate for your community? <i>Jennifer Michel, Age Concern</i>
	W4. Crime Prevention through Environment Design (CPTED) - the role of community boards. <i>Inspector Tony Lake, Queensland Police Service</i>	W5. Effective advocacy earns re-election - practical tips for the elections. <i>Carole Evans, Deputy Mayor of Christchurch</i>	W6. Creative Ideas – thinking outside the square to reduce crime. <i>Supt Sandra Manderson / Garry Moore, Mayor Christchurch City</i>
	W7. The value of using the Local Government Act and the Resource Management Act together in achieving positive community results. <i>Jenny Rowan, Ministry of Justice / Jan Crawford, Planning Consultants</i>	W8. A safer and friendlier community through being prepared for a pandemic. <i>William Rainger, FAFPHM</i>	W9. Positive approaches to achieve pedestrian safety. <i>Tim Hughes, Land Transport Safety Authority</i>
3.15pm	Afternoon Tea		
3.45pm	<i>Hon Mark Burton, Minister of Local Government</i>		
4.15pm	Manukau City handover to Christchurch for the 2009 Conference. <i>Sir Barry Curtis, Mayor, Manukau City</i>		
4.25pm	Supporting the role of community boards and introducing the next Board Conference. <i>Garry Moore, Mayor, Christchurch City</i>		
4.45pm	Closing <i>Yvonne Palmer, Chair, NZCBEC</i>		
5.00pm – 10.30pm	'Auckland Highlights by Night' tour		

Concurrent Workshops

There is a wide variety of workshops which will be interactive and include question time for the respective keynote presentations. As numbers will be limited can you please indicate your 1st, 2nd and 3rd preferences on the registration form for each workshop session.

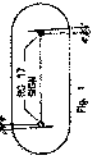


A40



ROADMARKING NOTES

1. All road markings to comply with L.T.S.A. (14/21) Manual of Road Signs & Markings Part 2: Markings - unless otherwise indicated.
2. All existing markings to be removed where they conflict with new markings, unless they provide additional safety prior to application of new lines.
3. Retard reflective pavement markers (RRPM's) for flush crossroads, intersections, and to bi-directional white RRPM's, unless otherwise indicated.
4. All traffic-related items are to be painted with reflective white paint.
5. All RRPM's, markings to be yellow 1m dia, 2m gap unless shown otherwise.
6. All signs to comply with NZC Manual of Traffic Signs and Markings.
7. Signs, markers and other objects shall be installed & finished on the Standard SD 3.22 to SD 3.27.
8. All 2017 signs on traffic signs to be finished with a reflection, (see Fig. 1)



AHI

SUBMITTED HOUSE NO. 17/08	DESIGNED KAWANADUNA	DRAWN	COMPUTED Y.PENG	DWG CHECK	DESIGN CHECK	3D FILE 4015450	DATE	BY	REVISION
							17/08		
							11/07		
							11/08		
							17/08		

ORIGINAL SCALE	1:125
SHEET NUMBER No.	2
OF	3
CONTRACT No.	TA 06023
REVISION	A1



SCALE 1:125

WAI TAKE RE CITY COUNCIL

**WOODVALE ROAD & WOODGLEN ROAD INTERSECTION
ROAD MARKINGS & SIGN
PLAN**

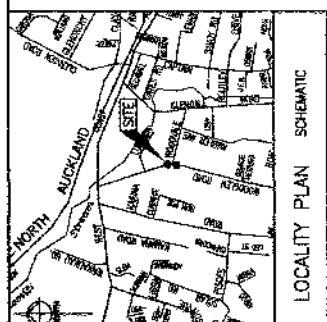
Project: SIGNAGE

Scale: 1:125

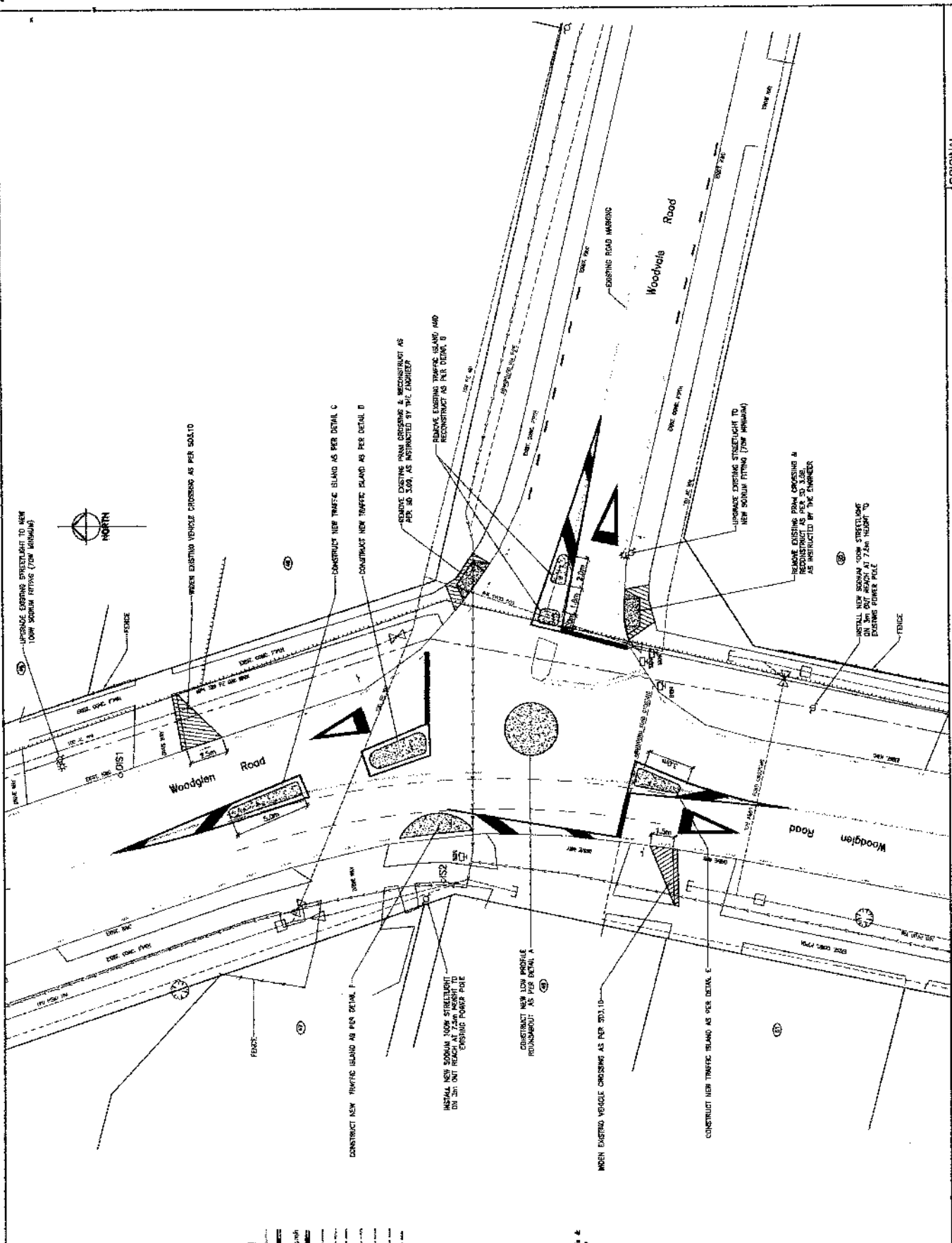
Project: SIGNAGE

Scale: 1:125

Project: SIGNAGE



LEGEND	EXISTING	PROPOSED
Sanitary Sewer	—	—
Stormwater Drain	—	—
Manholes	⊙	⊙
Stormwater easement	—	—
Fireline/easement drain	—	—
Watermain	—	—
F.H.	—	—
Sludge valve	—	—
Peak valve	—	—
Median valve	—	—
Block, City/High	—	—
Telecom Cable	—	—
Clear Corridor	—	—
Telco/Return	—	—
Power Cable	—	—
Transformer	—	—
Excav. Poles	—	—
Gas Mains	—	—
Fences	—	—



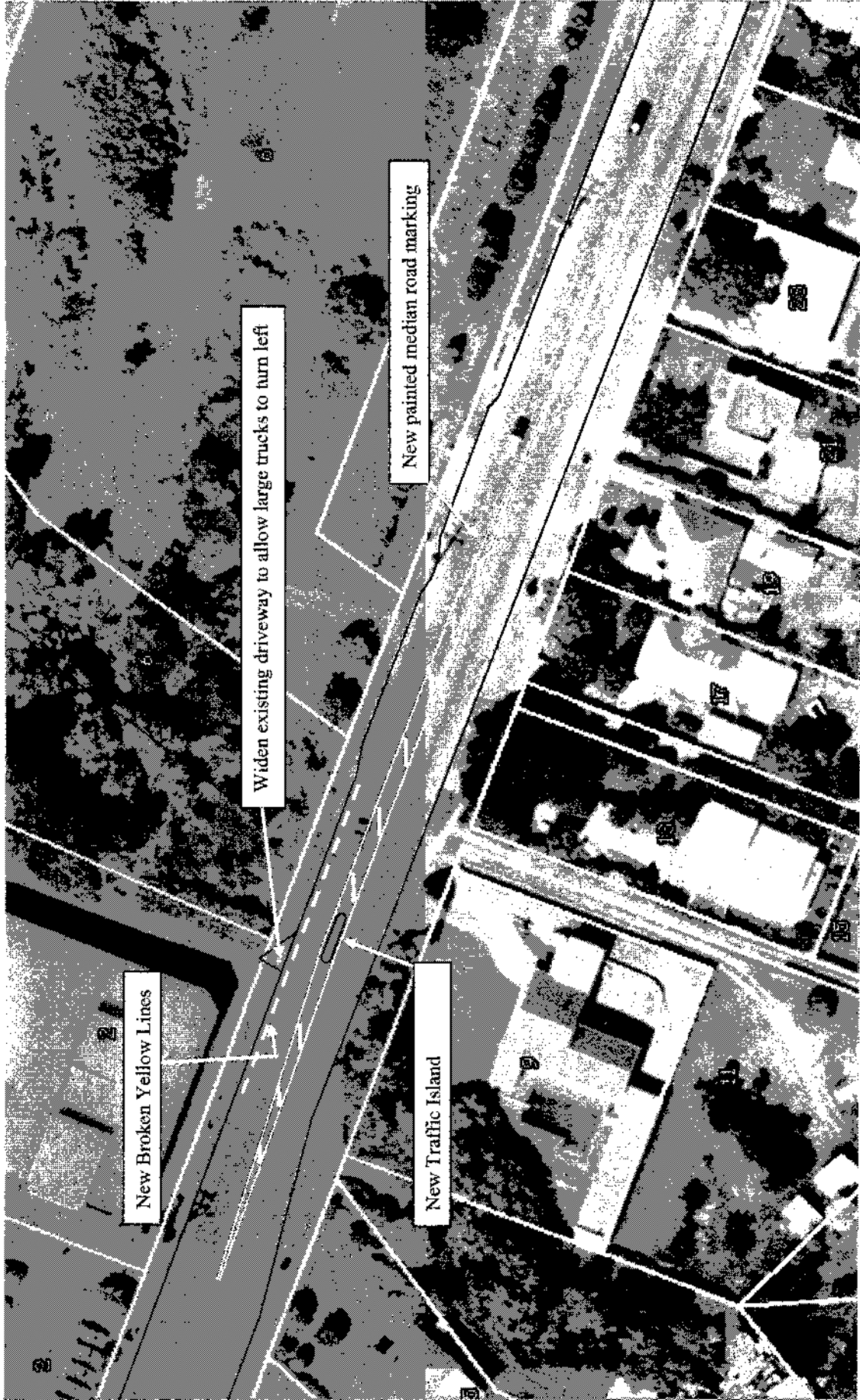
GENERAL NOTES

- All work to comply with Waitakere City Council's Code of Practice for City Infrastructure and Land Development, and the location of the utility manholes below construction work to ensure that construction can proceed as designed.
- The underground services have been shown on this drawing.
- Setting out of traffic islands and signal control platform to be carried out with the Engineer's approval.
- Engineer their right and approval at all stages prior to work.
- All services like, fences etc. affected by the construction work shall be reset to their original level. The Contractor shall be responsible for the location of the services and their depth at their risk etc.
- Vertical alignment of proposed concrete channel shall be indicated on plans as possible to achieve general and level as directed on site. It being every effort to achieve firm as directed on site.
- Controlled Bunching taken from W02 05.
- DS1 & DS2 are line spaces for intermediate.

BENCHMARKS
DS1: 691136.00m, 283317.94m N=39.94
DS2: 691136.00m, 283317.94m N=39.94

SURVEYED N.G.JEN		DATE 11/06	REVISION	BY	DATE
DESIGNED K.MANWARANA		01/07			
DRAWN Y.FENG		11/06			
CHECKED Y.FENG					
3500K CHECK					
AD FILE: P015453		11/06			
WAITAKERE CITY COUNCIL					
WOODVALE ROAD & WOODGLEN ROAD INTERSECTION					
CIVIL WORKS PLAN					
ORIGINAL SCALE 1:125		SHEET NUMBER 1 OF 3		CONTRACT NO. TA 06023	
SHEET NUMBER 1		SHEET NUMBER 3		SHEET NUMBER A1	
SCALE 1:125		SCALE 1:125		SCALE 1:125	

Proposed Traffic Island Margan Avenue



Proposed traffic Islands Great North Road outside Lynn Mall

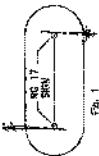


ABBREVIATIONS:

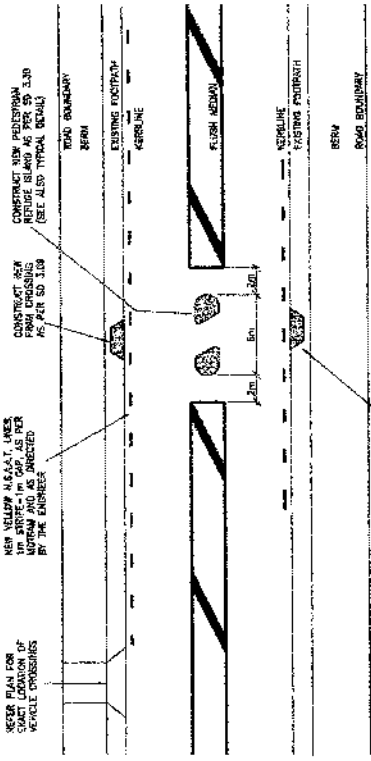
- N.S.A.A.T. = NO STOPPING AT ALL TIMES
- 150mm WIDE REFLECTORISED YELLOW
- 150mm LONG STRIPS - 150mm LONG GPC
- WYSM = WORKSHEET OF TRAFFIC SIGNS & MARKING
- (PART 1 & 2)

ROADMARKING & PEDESTRIAN REFUGE NOTES

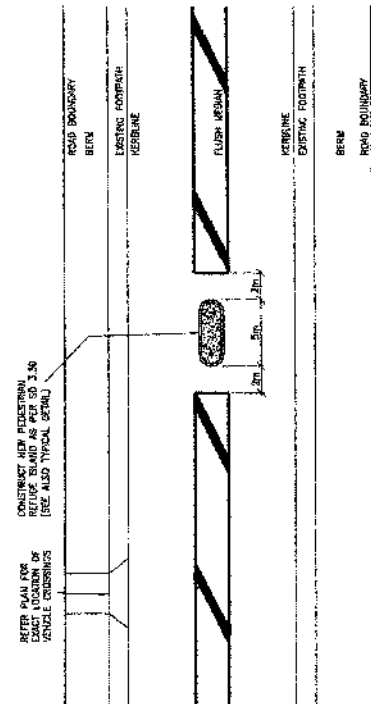
1. All road markings to comply with NZS 4354 (R14.2) 'Manual of Traffic Signs & Markings-Part 2: Markings' (MOT/TAO), unless otherwise indicated.
2. All existing markings to be removed prior to the start of work with the exception of those which are to be retained for the purpose of the completion of new work.
3. Raised reflective pavement markers (RPMs) for flush markers to be installed in accordance with the specifications in NZS 4354, unless otherwise shown.
4. All traffic-related kerbs are to be finished with interlocked kerb pavers.
5. All N.S.A.A.T. markings to be yellow 150mm x 200mm with 150mm diagonal stripes.
6. Markings for 'No Stopping' (N.S.A.A.T.) to be installed in accordance with NZS 4354 (R14.2) 'Manual of Traffic Signs & Markings-Part 2: Markings' (MOT/TAO), unless otherwise indicated.
7. Stop lines, kerbs and other details to be installed in accordance with NZS 4354 (R14.2) 'Manual of Traffic Signs & Markings-Part 2: Markings' (MOT/TAO), unless otherwise indicated.
8. All R17 signs no traffic details to be finished with 'A' material. (See fig 1)
9. Exact location and setting out to be confirmed by engineer on site.



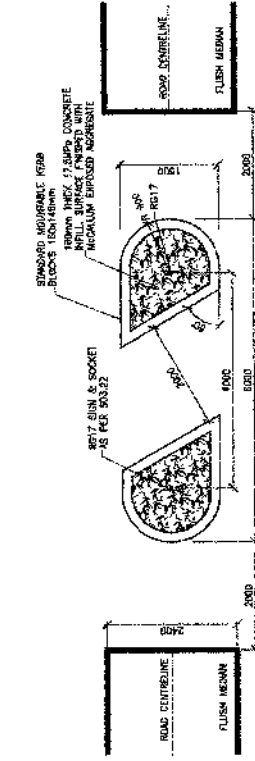
A46



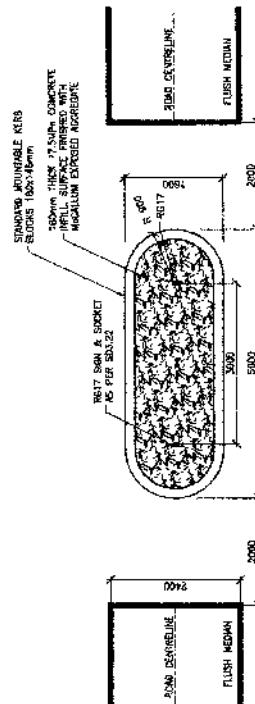
PEDESTRIAN REFUGE TYPICAL DETAIL A
SCALE 1:200



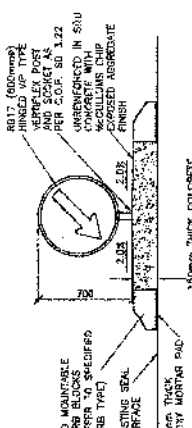
PEDESTRIAN REFUGE TYPICAL DETAIL B
SCALE 1:200



TRAFFIC ISLAND TYPICAL DETAIL
SCALE 1:50



TRAFFIC ISLAND TYPICAL DETAIL
SCALE 1:50



TRAFFIC ISLAND DETAIL TYPICAL SECTION
SCALE 1:20

PRELIMINARY

WAITAKERE CITY COUNCIL

3060 GREAT NORTH ROAD
MINOR SAFETY PROJECTS
TYPICAL DETAILS

REVISION	ORIGINAL SCALE AS NOTED	15489
SHEET DRAWING NO.	2	of 2
CONTRACT NO.	TA06023A	
SHEETS		A1

DATE	1/07	BY	
DESIGNED	K. Vaynshteyn	REVISION	
DRAWN	P. Harvey	1/07	
CHECKED	P. Harvey	1/07	
DATE	1/07	BY	
DESIGN CHECK		BY	
DATE	1/07	BY	

Project Management Ltd/1000 Northland Road 16/02/07 11:28 am