



Plate 3: Pampas locally common on coastal margin between Seacrest Drive and Mistral Place. Indigenous vegetation is dominated by kanuka and manuka.



Plate 4: Previous planting and footpath south of Clearwater Cove. Planting dominated by manuka, kanuka, ngaio and cabbage tree with a small stand of brush wattle in the centre of photograph.

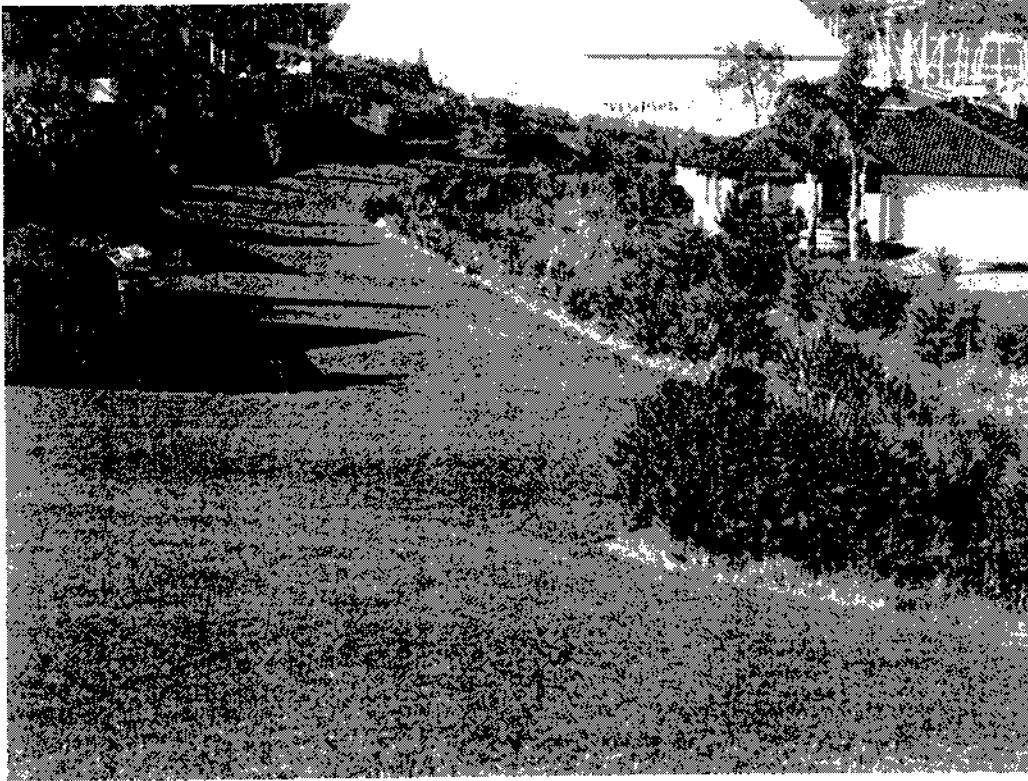


Plate 5: Previous riparian planting north of Clearwater Cove. Planting Area 2 is in the background where gorse and pampas are dominant.



Plate 6: Shrub balsam and woolly nightshade adjacent to garden waste tipping behind 23 and 25 Reflection Drive.

5.4 Erosion and sediment control

Erosion can become an issue if a large area is cleared of vegetation, requiring sediment control to minimise adverse effects on the local environment. Erosion through flooding and bank scouring is likely to be minimal given the characteristics of the site. Most of the stream banks are of a low profile with an adjacent low lying flood plain. Surface runoff and associated sediment load due to weed clearance is likely to be minimal. Erosion risk can be minimised by exercising care to minimise soil disturbance when undertaking weed control/clearance and planting works.

Revegetation of the site should be undertaken as soon as possible following weed control operations to minimise potential ongoing erosion problems.

5.5 Disposal of material

Many weed infestations will be dealt with *in-situ* removing the need for disposal. Any larger weed plants removed (e.g. black wattle, maritime pine, tree privet) should be mulched and left on site. If any material is required to be removed from the site, this should be taken to an approved disposal site, such as the Recycling Station at The Concourse, Henderson.

It is essential that plant seeds, tubers, spores and fragments are not dispersed from the current infestation areas. Many species can easily be spread by seed, e.g. Chinese privet, Japanese honeysuckle and pampas. Therefore, it is strongly recommended that all infestations that are unsuitable to mulch, be dealt with *in-situ*. Where cut vegetation is to be left on site, seed heads should be removed wherever possible and disposed of carefully to avoid new infestations establishing. The Standard Specifications for Weed Hygiene in Waitakere City should be adhered to at all times.

6. PLANTING RECOMMENDATIONS

6.1 Site preparation

Site preparation will be a key factor in the successful implementation of this project. All environmental weeds should be removed prior to undertaking planting, with the exception of the tree species providing shade over the stream. Many weed species will require follow up control operations to ensure total removal prior to planting.

Non-invasive weeds can either be trimmed with a weed eater, or alternatively, sprayed with a Glyphosate based herbicide. Gorse may be left to assist in the natural establishment of indigenous species. Gorse may also be controlled for amenity purposes as required.

All rubbish should also be removed from the site as part of site preparation operations.

6.2 Maintenance

Plantings should be inspected monthly for 12 months following planting operations to identify any management that may be required. Plantings should be released from weed competition a minimum of three times a year for the first two years, with further releases at a reduced frequency as required over the following three years. Some parts of the site may only require releasing for the first year, depending on site conditions.

Blanking (replacement of dead plants) should be undertaken as required (two months after initial planting) to replace those plants that have not survived the initial planting.

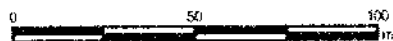
Limited infill planting¹ may be required in the second planting season. Infill plants should be of a bagged grade (PB3). Infill planting requirements should be identified in February/March preceding the upcoming planting season.

¹ Infill planting is required on sites where there are gaps in the planting because of plant mortality or where initial stocking rates were too low.



N
Legend
 1 - 2 Proposed planting zones
 Refer to text

Figure 2. Proposed Planting Zones in Marina Esplanade



A93

Wildland
 LOGISTICS
 Scale: 1:2,000
 Date: 17/10/05
 Cartographer: RPB