

Location of proposed
'No Stopping' line

Merville Avenue

Recently Installed Takapu Street Parking Restrictions

'No Stopping at All Times' lines approved at August Board Meeting

Location 'No Stopping between the hours of 8am and 4pm' restriction - Monday to Friday Only. Approved by Henderson Community Board in September. (Both sides)

'No Stopping at All Times' lines approved at August Board Meeting

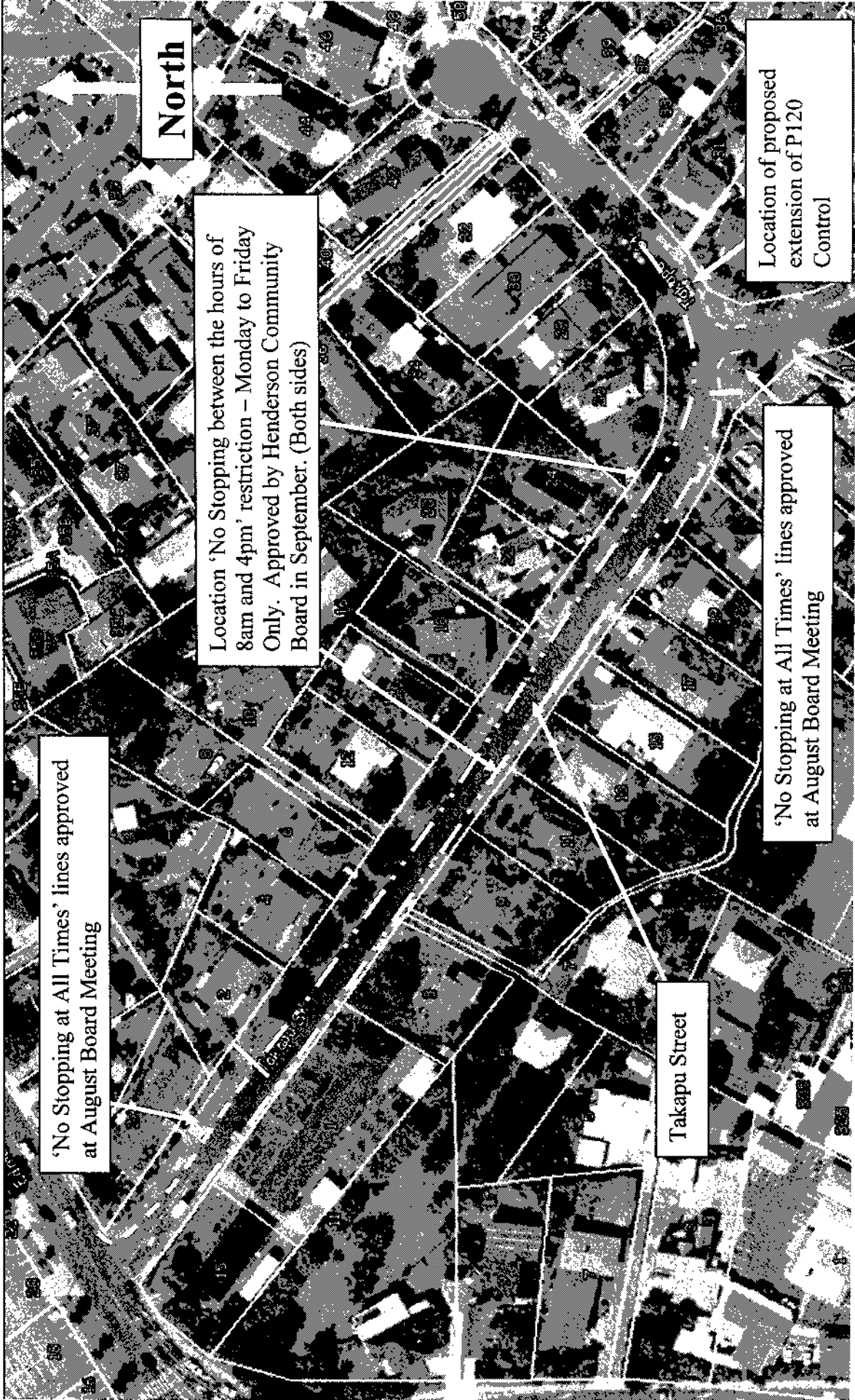
Location of proposed extension of P120 Control

North

Takapu Street

Ciprian Place

A2



EXTENSION OF THE ST JOHN AMBULANCE STATION, LLOYD MORGAN LIONS CLUB PARK



A3



A4



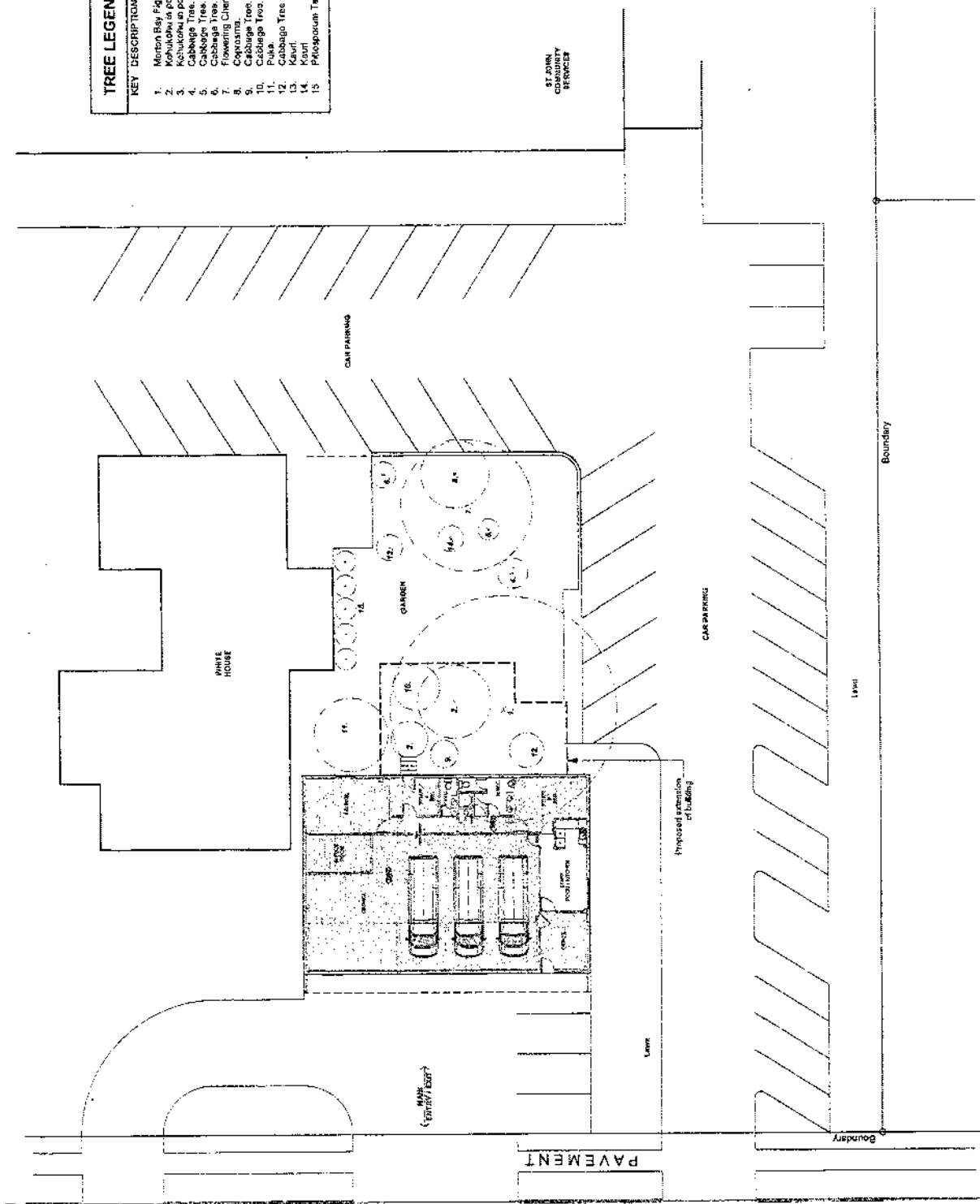
www.raukiko.co.nz

144441 Design Limited
P.O. Box 56 499 Auckland 3
702 Road, 91 Domain Road
Telephone 09 621 0143
Facsimile 09 622 0144
info@raukiko.co.nz

www.raukiko.co.nz

TREE LEGEND

KEY DESCRIPTION	HEIGHT
1. Monon Bay Fig	Over 6m
2. Kauri in poor condition - 50% die-back.	Over 6m
3. Kauri in poor condition.	Over 6m
4. Cabbage Tree.	Over 6m
5. Cabbage Tree.	Over 6m
6. Cabbage Tree.	Over 6m
7. Flowering Cherry.	3m
8. Coprosma.	2m
9. Cabbage Tree.	3m
10. Cabbage Tree.	3m
11. Cabbage Tree.	2.5m
12. Cabbage Tree.	2m
13. Kauri.	1.5m
14. Kauri.	1.5m
15. Pileoporum Tamarillo.	3m



A5

EDMONTON ROAD

REVISIONS

THE ORDER OF
ST JOHN
TE ATATU STATION
EDMONTON ROAD
TE ATATU SOUTH

EXISTING SITE PLAN

SCALE	DRAWN	DATE
1:200	A.M.P.	JUL 2004
PROJECT	SHEET NO	REV
1246	SK01	

This plan is subject to page 1 and cannot be reproduced or re-used without the prior consent of RAUKIKO DESIGN