

Figure 12: District Plan Human Environments

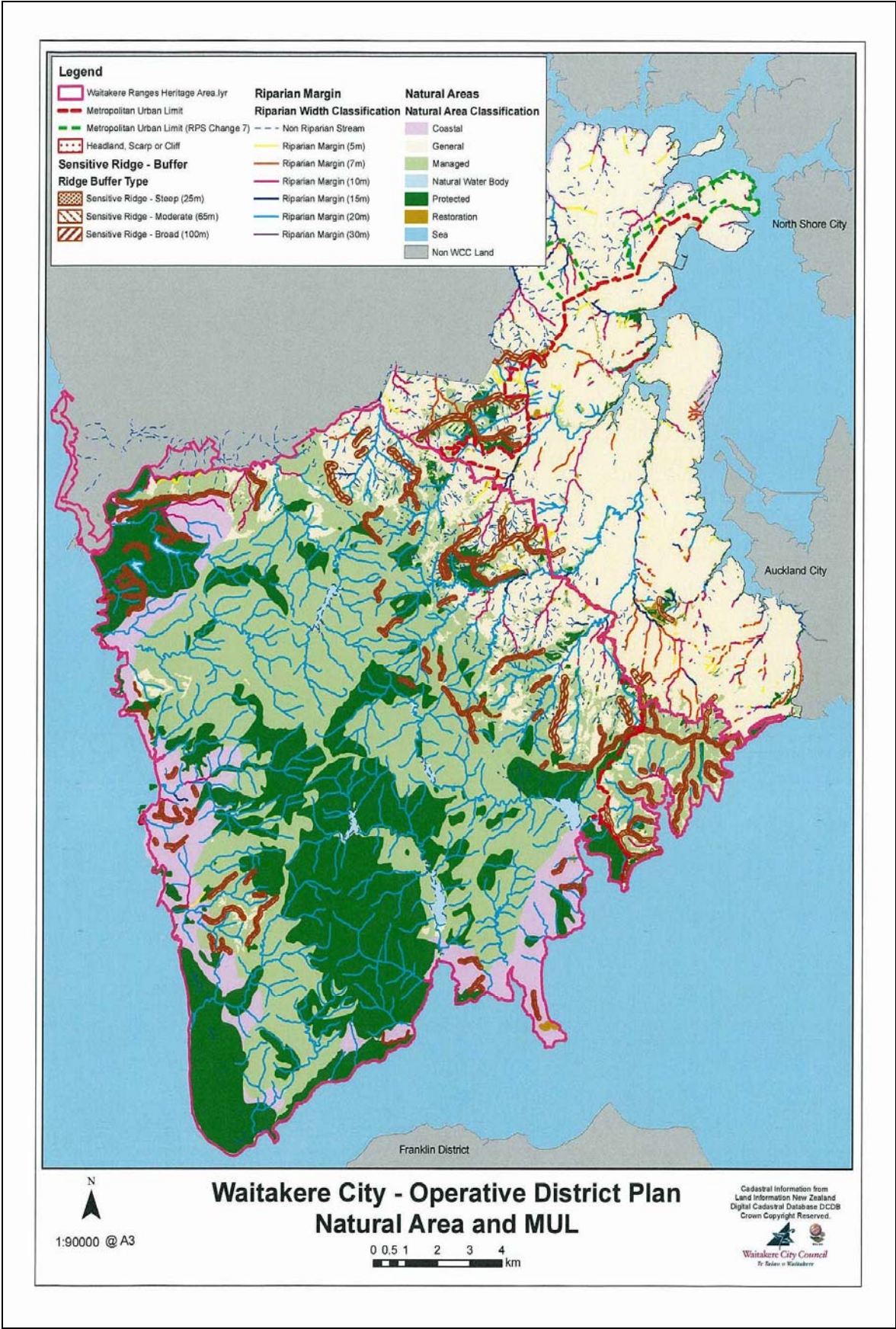


Figure 13: District Plan Natural Environments

5.10 Roads (Figure 14)

Roads form the connections between places and provide access to and from a local area. The locations of these roads define the travel patterns of both residents and visitors. Oratia defined by Scenic Drive in the south, Forest Hill and Parrs Cross Roads in the north, and the four main connector roads West Road, Carter, Parker and Shaw Roads. These roads provide access to, from and within Oratia. These roads aid in defining the 'distinctive community' that is Oratia, by providing access to the community and linking residents with local amenities and others residents in their community.

Roads not only provide access, but they can also act as physical boundaries separating one community from another when there is no direct road connection.



Figure 14: Roads