

# Revegetation Timeline

## - AND FLOWCHART

### Restoration – different to gardening

#### Restoration is the aim:

- Restoration – ‘The process of assisting the recovery of an ecosystem which has/is being damaged, degraded or destroyed’.
- Goal – ‘To promote ecological restoration as a means of sustaining the diversity of life on Earth and re-establishing an ecologically healthy relationship between nature and culture’.
- An outcome – ‘The establishment of a condition that is self regenerating, self adapting and self maintaining’. Succession is a primary mechanism.

#### Succession is the process:

- The process by which vegetation progresses from the earlier plants to establish on a site, to more ‘mature’ vegetation
- Each stage modifies the conditions – making them suitable for the next stage – *nature’s own ‘tipping the balance of favour’*
- Each species will germinate where & when conditions suit – as long as their seed / spores can reach the site

Revegetation is the establishment of new vegetation. When this involves the planting of a native pioneer community it begins the process of succession and thus restoration.

#### Our role – to “assist the process” by for example:

- Helping to limit factors that inhibit the process:
  - Control invasive weeds
  - Reduce activities that disturb the ground and vegetation
  - Control animal pests that eat seed and young plants
- Helping reduce barriers:
  - Ensure seed sources etc are within distribution range
- Helping establish vegetative structures important for ecosystem health:
  - E.g. establishing ‘bush edge’ or connections between fragmented remnants
- Or helping speed the process along:
  - Plant a pioneer vegetation community (revegetation)
  - Interplant secondary species within a pioneer community
  - Control animal pests that damage established plants

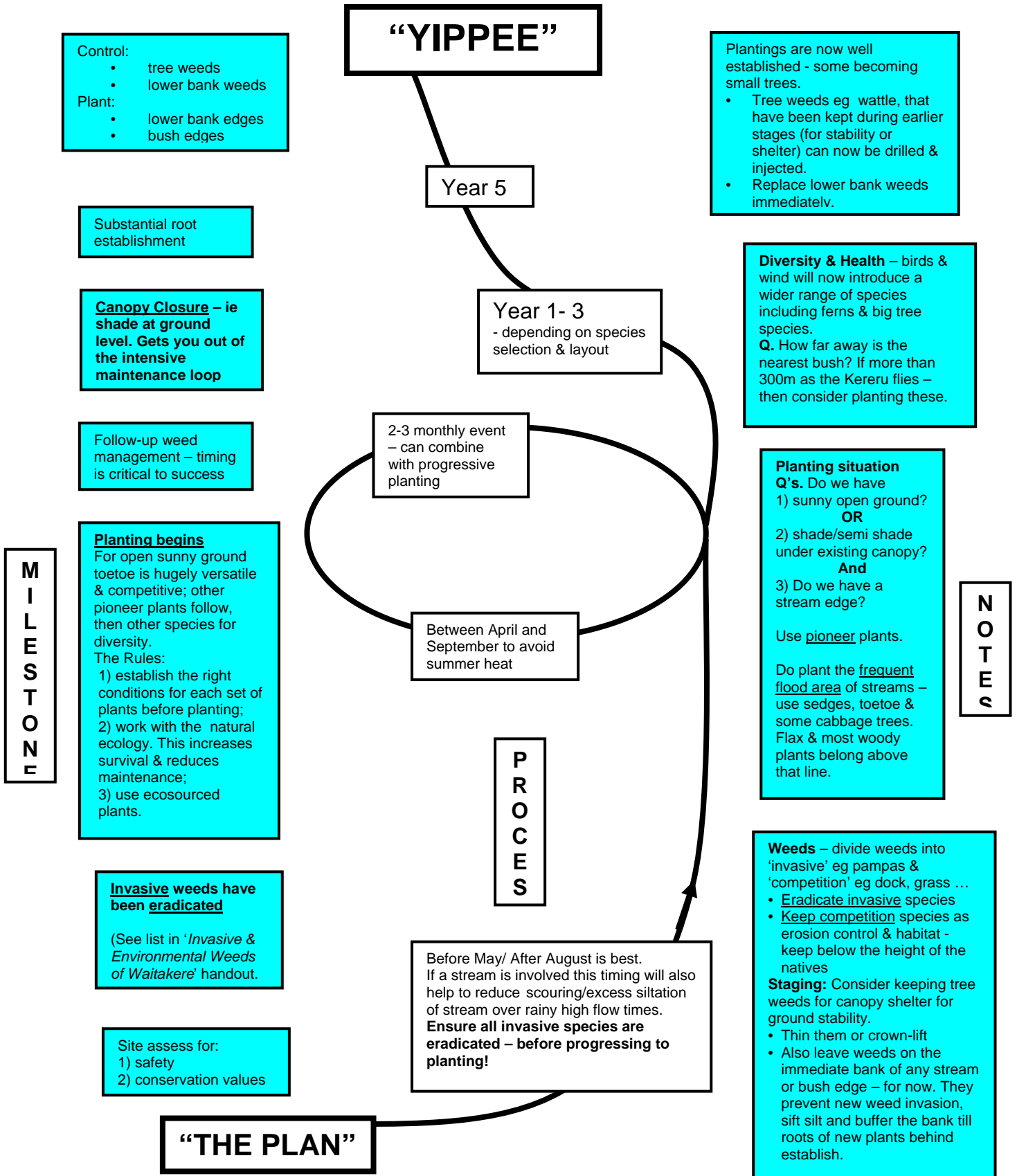
There’s a key theme to all the above:

“Tip the balance of favour” – so many of our actions when interacting with the land, perhaps unintentionally, favour outcomes that we would not desire. This relates especially to soil and vegetation disturbance e.g. helps damaging plants to get established (i.e. creates habitat for them), increases slips and erosion. Cause and effect – every action impacts in some way. Often there are small changes we can make that will have a very large positive impact simply because they tip the balance in favour of desirable outcomes, and nature’s own power of restoration then works alongside us.

# WAITAKERE'S GREEN NETWORK

## COMMUNITY ASSISTANCE PROGRAMME

### REVEGETATION FLOWCHART



# REVEGETATION TIMELINE GUIDE

Year	Month	Activity
1	November to February	Weed control – initial control of environmental weeds plus three-monthly spot-control follow-up ( <u>timeliness is critical</u> ) to <u>eradicate</u> original populations.
1	November to February	Fencing to exclude stock/pests.
1	May / June / July	Planting preparation just prior to planting: <ol style="list-style-type: none"> <li>1. Environmental weeds check - <u>only</u> proceed if none</li> <li>2. Competing weeds (long grass etc) – cut low.</li> </ol> Plant a light and wind tolerant community of pioneer species e.g. Toetoe, Cabbage tree, Karamu, Mahoe, Kanuka, Flax. <u>Species selection and layout is critical.</u> For stream or wetlands distinguish between wet areas, waters edge, fast flow flood zone and area beyond this. Select species accordingly. <u>Species selection and layout is critical</u> Apply fertiliser at time of planting.
1	November	Weed control follow-up. <u>Timeliness is critical:</u> <ol style="list-style-type: none"> <li>1. Environmental weeds – prevent reinfestation during reveg establishment. Eradicate populations, re-establish weedfreeness.</li> <li>2. Competing weeds – keep below height of growing plants <u>at all times.</u></li> </ol>
2	February	Weed control follow-up – as for November (above).
2	May / June / July	Supplementary planting: <ol style="list-style-type: none"> <li>1. Prep as per year 1.</li> <li>2. Plant to replace losses in planting from year 1.</li> </ol> Apply fertiliser at time of planting.
2	November	Weed control – follow-up as needed as per November (above). Assuming good species selection and layout for planting: <ol style="list-style-type: none"> <li>1. Env weeds – the site should be self-maintaining of env weeds – except perhaps for the edges.</li> <li>2. Competing weeds –should now be being out-competed.</li> </ol>
3	February	Weed control – maintain weedfreeness from env weeds. Consider pest control.
3	April	Apply slow release fertiliser.
3	May / June	Planting of future understorey and canopy species that require some shade and shelter to establish eg Hangehange, Kawakawa, Five-finger, Kahikatea. Apply fertiliser at time of planting.
3	November	Weed monitoring – maintain weedfreeness from env weeds. If there are more than a few new seedlings to control then something is amiss. Ask questions.
4	February	Weed monitoring – maintain weedfreeness from env weeds. Consider pest control.
4	May	Planting of sensitive species and future canopy species e.g. Kauri, Tanekaha, Puriri, Titoki and Kohekohe. Apply fertiliser at time of planting.
4	November	Weed monitoring – check annually. Maintain weedfreeness from env weeds.
5	May	Planting of sensitive species and future canopy species. Apply fertiliser at time of planting.
5	November	Weed monitoring – check annually. Maintain weedfreeness from env weeds.

