

# ArtLink

Waitakere City  
Arts Newsletter

October/November 2008

## Schools Trash to Fashion® Awards Celebrate Creativity

This year's Schools Trash to Fashion® Awards were a great success with 40 Waitakere schools participating and 244 entries from Primary, Intermediate and Secondary students. Judges selected 130 finalists whose work was showcased on the Awards night, which was held at the MAU Theatre at Corban Estate Arts Centre in Henderson.

Theatre directors Carla Martell and Kate Parker worked with the finalists to create an exciting theatrical show that highlighted this year's categories of 'Transformers', 'Earthsong' and 'Wind Sand Stars'. Students modelled their own or each other's clothes with flair and the audience was treated to innovative choreography, unique music soundscapes and dramatic lighting. Between acts, MC Ben Crowder talked about how to create less rubbish in our daily lives.

As well as being an inspiring showcase of the creativity of Waitakere youth, the awards showed how caring they can be, too. Waitakere City Council Trash to Fashion® coordinator Jeannette Aldridge remembers many incidents of team spirit, including students bringing her a poster to sign for young Thomas Eldridge from Sunderland School. Thomas modelled 'Killer Space Ship' (pictured middle left) made with his friends William Ward, Marcus Benzie and Harry Crawford. According to hardworking volunteer Leanne Carlisle, "Thomas had the most difficult costume to work with and was left standing backstage for long periods of time. He never complained, was always helpful, listened carefully to instructions and had great enthusiasm for the event. He even put forward his own suggestions for choreography! Having entrants like Thomas made the work of the volunteers and crew so much easier and even though he didn't win an award, we all really wanted to recognise him for the effort he put in throughout the event!"

Many special stories are behind the clothes, including that of Supreme Winner Layla Bluck-Wulf (pictured bottom right), who was hospitalised and bedridden for much of this year after a serious accident. Layla transformed what was a frustrating and sad time into something positive by handrolling all the hundreds of beads that she used to create her outfit. She combined her beads with her bandages to create a stunning piece that she titled 'Horizon'.

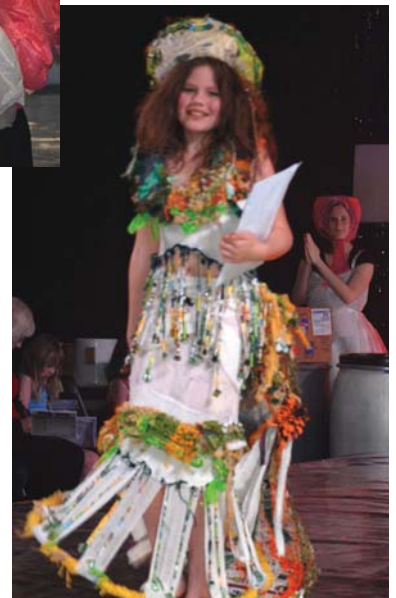
Learning about sustainability has never been more important, and the Schools Trash to Fashion® Awards are a great way to do it.

## Next Artlink Deadline

If you have arts news, events or classes that you would like to advertise here in Artlink, please feel free to submit it to us. The next deadline is for December/January arts news and it falls on November 9. Please send brief descriptions of your events and images of 300 dpi or more to: [eve.tonkin@waitakere.govt.nz](mailto:eve.tonkin@waitakere.govt.nz)



THE SCHOOLS  
**T2F**  
TRASH TO  
FASHION®  
AWARDS 2008



Top: Model: Lydia Morrow 'Reign Queen' by Anna Snowling, Georgia Leonard, Heidi Watson, Lydia Morrow (Woodlands Park School)  
Middle: Actors Ella Bonnie Preston Becroft, Dianne Yang, Katrina Wesseling, Connie Boston, Roo Mirzaabbasi

## news

### Titirangi Painters Exhibition Winners



The longstanding local painters group held their sixteenth annual Winter Exhibition last month and about 2,000 visitors enjoyed the works on show.

The "Best of the West" competition was judged by Waitakere Arts Laureate Peter Siddell, and the winner was 'Whatipu' painted by Monique Endt-Topsand. Sharon Mann won the Public Vote with 'Giraffe Family' (shown).

### Artworks Wanted for Charity Auction

Henderson Valley School is currently looking for West Auckland artists for their second annual Silent Art Auction, which will be held on Friday November 7 this year in the Henderson Valley Hall. The school will provide finger food, music and a guest MC and have local wines available. Proceeds from the auction will go towards upgrading the school pool with seating and shading.

The school will appreciate any artworks and they work with artists to establish minimum bids for pieces and to establish commission rates. Artists are invited to contact Michelle Duff on 837-7667 to discuss donating their work to the auction.

### Summer Job at West Coast Gallery

Piha's friendly local gallery is offering a Task Force Green position for 26 weeks over summer. Starting at the end of November, the position involves some weekend and holiday work and requires art knowledge, computing skills and service ability. Applicants must have a community services card or be on a benefit. Contact Glenys at the gallery for a job description on tel: 812 8029, email: enquiries@westcoastgallery.co.nz.

### The Artists Workbook Published

The Artists Alliance have just published the latest version of their artists resource 'The Artists Workbook'. An inquiry tool for the professional development of visual artists, this is a workbook of ideas, stories and questions. There are comments from artists 'on the front line' and focus points for research and inquiry into artists own professional development. The workbook is now available online: [www.artistsalliance.org.nz](http://www.artistsalliance.org.nz) or pop in and see the team at 1 Ponsonby Road, Auckland.

### Local Galleries Seeking Submissions

Titirangi's Arataki Visitor Centre is currently looking for work by local West Auckland artists to display at their art gallery for six months starting on November 1. Interested artists are invited to contact Jan Somers at the centre on tel: 817 0089.

The Packing Shed currently has exhibition dates available in the popular Gala Room. Artists who would like to show are invited to contact Jo Moore on tel: 835 1557 or email: [packingshed@xtra.co.nz](mailto:packingshed@xtra.co.nz),

Recently opened in New Lynn, Xpress Stationery focuses mostly on art and craft. Manager Dianne Mulvey is currently looking for artists who would like to display their work in-store. Contact her on tel: 826 4646 or email: [newlynn@xpress-stationery.co.nz](mailto:newlynn@xpress-stationery.co.nz).

### Focus on the Humble Potato

Slow Food Waitakere and Lopdell House Gallery are celebrating World Food Day, the International Year of the Potato and Terra Madre, with a photographic competition to be exhibited in the Spiral Gallery from October 22 to November 16. There are over \$1900 worth of prizes to be won in the following categories:

1. The Potato as Food (still life, open to all); a \$750 prize
2. The Potato in Society (open to all); a \$750 prize
3. The Year of the Potato (amateur photographers only); a prize of a Fujifilm FinePix A820 camera and \$200

These awards are made possible with the generous support of Wilcox, Fujifilm and Ecopac.

### Local Students Work With Project Twin Streams to Beautify Henderson Creek

With the support of Project Twin Streams, students from Sunderland and Nga Kakano O Te Kaihanga schools in Henderson are working with master carver Sunnah Thompson to make a special identity marker along Henderson Creek. Students drew regional creatures and transferred them to a large tree stump near Epping Reserve. Thompson carved them into the stump and the students returned to paint them. Everyone involved has enjoyed the experience and the stump is drawing the attention of passers-by.



Students from Nga Kakano O Te Kaihanga

## events

### Corban Estate Art Centre (CEAC)

#### Arts Enterprise Seminar

This seminar will cover New Zealand copyright law, its application and how it affects you as a visual or performance artist.

Date: Thursday, October 2

Time: 9am–12.30pm

Fee: \$25 (includes morning tea)

#### Artspeak Series: Peter Siddell

Guest speakers talk about topical arts subjects; free entry. 2008 Waitakere Arts Laureate Peter Siddell is a well known painter with work held in most major private, public and corporate collections in New Zealand. Peter will be talking about his current body of work and career to date.

Date: Monday, November 3

Time: 7pm

#### The Pacifica Living Arts Festival

Waitakere schools multi-cultural festival with handmade Pacific arts and crafts, food and entertainment.

Date: November 9–14

Time: 9.30am–2.30pm

Venue: Pacific Arts & Cultural Centre

### Titirangi Potters Meeting

New members are always welcome at Titirangi Potters. Thursday night is club night and members meet in their space under Titirangi Community House to make pots together, chat, share a coffee and enjoy the group's extensive library. Drop-ins welcome. Work by a member is exhibited in the space each month.

### Waitakere Enterprise Seminars

Free seminars to help Waitakere artists, funded by the New Zealand Trade and Enterprise initiative.

#### Small Business Tax for the Creative Sector

Date: October 6

Time: 9am–12.30pm

Venue: Waitakere Enterprise, Central One, 2nd Floor, 4 Henderson Valley Road, Henderson

Bookings: tel: Damian 09 968 8555, email: damian.bennett@whkgc.com.

#### Costing and Pricing for the Creative Sector

Date: November 13

Time: 9am–12.30pm

## exhibitions

### The Waitakere Trust Art Awards

Currently in its twenty-second year, the annual awards are a fantastic showcase for Westie artists. The Trust grants awards for painting, drawing and sculpture. This year Project Twin Streams is granting an inaugural award for winning paintings and sculptures inspired by the aims of Project Twin Streams. Come along and vote for the 'audience choice' award.

Date: October 2–10

Time: 10am–7pm; Friday October 10, 10am–4pm

Opening: Wednesday October 1, 8pm

Venue: Unitec Waitakere Campus, Ratanui St, Henderson

### Corban Estate Art Centre

#### Western Gothic

Artworks with gothic undertones.

Date: September 12–October 12

#### Waitakere Arts Laureates Exhibition 2008

Work from the 2008 Waitakere Arts Laureates, (Patricia Wright, Soprano; Fatu Feu'u, Artist; Peter Siddell, Painter and Lemi Ponifasio, Mau Dance Group Director) will be exhibited, along with portraits of the Laureates by photographer Catherine Davidson.

Date: October 17–November 16

Opening: Thursday October 16, 6pm

#### Render

An explorative exhibition of texture, technique and process in painting, featuring works by Catherine Fookes, Arwen Dilger and Dan Mills.

Date: October 17–November 16

Opening: Thursday October 16, 6pm

#### Annual Affordable Art Exhibition

This year's theme is 'triptychs in any medium'; works sell for under \$400.

Date: November 21–December 14

Opening: November 20, 6pm

#### Spark Studio: I SPEAK!

Spark Studio is a creative space offering an innovative art programme for adults with various disabilities. This exhibition showcases the results of a year long project exploring language and visual representation.

Date: November 21–December 14

Opening: November 20, 6pm

#### CEAC Tutors Exhibition

Work by tutor artists from Corban Estate Arts Centre.

Date: December 19–January, 2009

Opening: December 18, 6pm

#### New Graduates Exhibition

An exhibition of work from Waitakere City new graduates.

Date: December 19–January, 2009

Opening: December 18, 6pm

### Lopdell House

#### Peace of Green: The Magical World of John Green

Sculptural ceramics from a well known local potter.

Date: August 8–October 5

#### Boundless Books: Steiner Press Books 1992–2008

Elizabeth Steiner's handcrafted books.

Date: August 8–October 5

#### Portage Ceramic Awards 2008

Lopdell House Gallery and the Portage Licensing Trust are delighted to present the eighth National Ceramic Awards Exhibition. Each year the selection showcases an exciting number of new ceramic artists alongside well established artists.

Date: October 10–December 7

Opening: Thursday October 9, 6pm

#### Slow Food Waitakere Potato Photography Competition

Participants focus on the humble potato in celebration of World Food Day, the International Year of the Potato and Terra Madre.

Date: October 22–November 16

Opening: October 22, 6pm

#### Our Stream, Our Dreams



Pupils from Green Bay Primary School, Kaurilands School and Konini School have been working with Project Twin Streams to create photographs, clay models, paper-mache and masks. Students considered the current state of their local stream and imagined their 'dream stream'.

Date: November 20–December 7

## Signal Gallery

### **Nicki Price Paper Funk: Under Southern Skies**

Creative Westie Nicki Price uses papier mache and found objects to build bas-reliefs. She is influenced by the Mexican papier mache artists and the colour and energy of Pacifica/NZ.

Date: September 14—October 11

## TCAC Upstairs Gallery

### **Terry Prince: Roads West**

Acrylics of the West Coast.

Date: September 18—October 12

### **The 2008 Portage Mug Show**

A community competition sponsored by the Waitakere Trust, with the humble mug represented in many forms. Over \$2000 in prizes.

Date: October 16—November 9

Opening: October 16, 6—8pm

### **The 2008 Titirangi Potters Annual Exhibition**

An array of delicious and diverse ceramics. A perfect opportunity to purchase a present or personal piece from this talented party of potters.

Date: November 13—December 7

Opening: November 13, 6—8pm

## The Packing Shed Gallery

The Packing Shed Gallery and Cafe has live musicians playing every weekend from 11am to 1pm.

### **Bryan Nelmes Stoneware**

Potter Bryan Nelmes uses traditional Japanese techniques, including tenmoku, chun, and shino glazes.

Date: October 3—31

### **Affordable and Unique Christmas Gifts**

Leading up to Christmas, the Gala Room will be displaying handmade arts and crafts that will make fanastatic Christmas gifts and stocking fillers. For as little as \$10, you can support local artists and give something special.

Date: November 1—December 5

## Hobsonville Art Club

### **Affordable Art Show**

Art by members from \$30.

Date: October 25—27

Time: 10am—4.30pm

Venue: Hobsonville Hall

## West Coast Gallery

### **Monique Endt: Wild West and Tree Ladies**

View Monique's new paintings of our West Coast beaches, featuring a series of tree ladies and men dancing and twisting their textured branches.



Anawhata Dry Brush, Monique Endt

Date: October 11—November 2

Opening: October 11, 2pm

### **Kristin Kell: Identity—No Crisis**

Often described as a "wild woman" the artist explores this identity through the uses of non-traditional natural fibres and resins. The works reflect an intimate association with Papatuanuku and provide the viewer with close-ups of many ubiquitous natural found items.

Date: November 8—30

Opening: November 8, 2pm

## education

See the back page for contact and booking information:

### **Steiner Watercolour Painting Workshop**

Colour stories and transformation: working out of the Waldorf/Steiner curriculum towards one's own motifs with Susie Gay.

Date: October 4

Time: 10.30am—3pm

Venue: Titirangi Rudolf Steiner School, 5 Helios Place, Titirangi.

Fee: \$40 includes all materials

### **Corban Estate Art Centre**

#### **Summer School, 2009**

CEAC are currently enrolling for their renowned summer school, which runs from January 12—16, 2009. Courses are run by contemporary New Zealand artists and include: A Film Acting Workshop; Painting With Oils; The Fabric Fold, Series II; Community of Theatre; Wairua Auaha Kākahu: Creative Capes; Bronze Casting; and Jewellery Design. Book early to secure a place!

#### **Adult Art Classes**

Classes Include: Extend Your Drawing; Small But Perfect (journaling); Life Drawing; Painting The Land; Rediscover Oil Painting

#### **Weekend Workshops**

Workshops for October/November are: Mosaic Garden Project; Life Drawing and Flax Weaving.

#### **Children's Spring Holiday Programme**

Classes are: Rousseau's Jungle drawing (8—12); Creatures of The Night painting (8—14); Luscious Fruit patchworking (5—12); 3D Pets (5—8); Whale Rider sculpting (5—9); Huhu Bug Ball Mask Making & Theatre (7—12) and Folk Doll (9—12).

#### **Term 4 Children's Art Classes**

CEAC has a huge range of art classes for pre-schoolers and children. Contact us to find out more.

### **Chelsea Potters Community Workshops**

Adults and children's classes in beginner pottery, wheelwork and clay sculpture. Classes are held after school, on weekends and holidays.

### **Lopdell House**

Term 4 workshops for children include: Paper Clay Vessels (Yrs 3—6); Environmental Photograms (Yrs 3—6); Kiwiana Eggcups (Yrs 2—6) and Still Life Paintings (Yrs 3—6)

### **Pacific Arts & Cultural Centre: For Children**

The centre has workshops for school classes including Music and Drumming, Flax Weaving, Lei Making and Umu Kai.

### **Rutherford College Art Education**

Art, craft and photography courses for adults commence from October 20. Weeknight and weekend courses are available. Courses include, Life Drawing, Printing workshops, Oil painting, Mosaics, Pottery, Slip Casting, Digital Photography, Basic SLR Camera control, Flax Weaving, Bone carving, Leadlight and Stained glass, Jewellery Making, Textile design with Mixed Media and Sewing.

Class sizes are limited so we advise students to register early.

music  
out  
west

## events

See the back page for contact information:

### Waitakere Music Nights

Sponsored by Go West Music, this monthly event showcases local musicians and hosts well known talents alongside relative unknowns.

Date: Friday October 31  
Time: 7.30pm  
Fee: \$10 on the door  
Venue: Flax Cafe

### Elevation Café Performance Nights

Enjoy live music by local musicians and great views.

### Waitakere City Orchestra Trusts Concert Series

**Music From the Baroque**  
Conducted by Brigid Ursula Bisley.

Programme includes: Geminiani "La Follia", Albinoni Oboe Concerto in D Minor - soloist Sarah Roper, Rameau Suite from Act III of "Hippolyte et Aricie", JS Bach Suite in C Major, Johan Stamitz Clarinet Concerto - soloist Donald Nicholls

Date: Sunday November 9  
Time: 6pm (doors open 5.30pm)  
Fee: \$25 (adult); \$15 (concession); \$10 (kids); \$60 family 2+2; \$10 group bookings 20+  
Venue: Playhouse Theatre  
Bookings: door sales only

### MusicSpace Ensemble: Music In the Gallery

Lopdell House's free lunchtime concert series is proving very popular and continues thanks to the support of Creative Communities. Please arrive early to secure your seat.

**Debussy's String Quartet**  
Date: October 29  
Time: 1.30pm  
Venue: top floor of Lopdell House

**Tchaikovsky's String Sextet:  
"Souvenir de Florence"**  
Date: November 26  
Time: 1.30pm  
Venue: top floor of Lopdell House

### Jazz Mania: The Trusts Waitakere Brass Band

Don't miss this opportunity to see the band performing in swing/big band style with special guest artist John McGough, one of New Zealand's premier trumpeters. The concert will offer round table seating for guests and a licensed cash bar.

Date: Saturday November 22  
Time: 7.30pm  
Venue: Waitakere Trusts Stadium  
Bookings: iticket, tel: 361 1000 or online: [www.iticket.co.nz](http://www.iticket.co.nz); group bookings tel: 838 1106



## education

See the back page for contact information:

### Heartstring Cello and Guitar Classes

Natarani and Sasha Witten-Hannah offer personal tuition in classical guitar and cello at their studio in Titirangi.

### Sally Stockwell Voice Workshop

Sally has been working professionally for 11 years since she graduated from Toi Whakaari/NZ Drama School and her course introduces various techniques to release and strengthen your own voice. Connection between breath, impulse and emotion is a point of focus.

Date: Saturday October 4  
Time: 10am—4pm  
Fee: \$80 (15% deposit required)  
Venue: Blockhouse Bay Boat Club, Endeavour St., Blockhouse Bay

performance  
out  
west

## events

### People Pride Place Community Festival

A family-friendly local event with food stalls, on-stage entertainment and fun activities like rock climbing, face painting and a petting farm.

Date: November 15  
Time: all day  
Venue: Corban Park Reserve, Henderson Valley Road

### Flava Out West 2008

The Waitemata Primary Schools Kapa Haka competitions look set to be a lot of fun this year, with all groups receiving a certificate and trophy for participating.

Date: Saturday, November 1  
Time: 10am—6pm  
Venue: Parris Park, Glen Eden

### Oceania Festival

Celebrating West Auckland's cultural diversity with a wide range of performances from children and adult dance groups, entertainers and so on.

Date: Saturday, November 15  
Time: 10am—6pm  
Venue: Parris Park, Glen Eden

### Robin Kewell Film Nights

**Journey Through Eritrea**  
The third film in our Robin Kewell series of short films and talks documents Robin's visit to Eritrea. One of the few people ever to have filmed here, Robin shows the diversity of landscape and people in a nation at war with Ethiopia for 30 years. His presentation also includes extracts from his diary and tips on how to film in high temperatures.

Date: Saturday October 18  
Time: 7.30pm (doors open at 7pm)  
Venue: top floor of Lopdell House  
Fee: \$10 or \$5 for Friends of Lopdell House Gallery  
Bookings: tel: 817 8087 or call into the gallery shop; you must pay in advance to secure your seat.

## Planet Aldabra—No Man's Land



The fourth Robin Kewell film in our series. Commissioned by the Seychelles Islands Foundation, this film captures life on the largest raised coral atoll in the world. North of Madagascar in the Indian Ocean, Aldabra is a World Heritage Site, home to 10,000 giant tortoises. The film is scripted and narrated by award winning natural history expert Barry Paine and is complemented by a haunting musical score.

Date: Saturday November 15  
Time: 7.30pm (doors open at 7pm)  
Venue: top floor of Lopdell House  
Fee: \$10 or \$5 for Friends of Lopdell House Gallery  
Bookings: tel: 817 8087 or call into the gallery shop; you must pay in advance to secure your seat.

## shows

### Playhouse Theatre

#### **The Wizard of Oz** directed by Dorothy Chisholm

Bring the family along to a magical world and follow the adventures of Dorothy Gale, her little dog Toto, Scarecrow, the Tinman and the Cowardly Lion as they seek help from the wonderful Wizard of Oz. Watch out for the Wicked Witch of the West! Don't miss seeing this much-loved musical.

Date: September 27—October 11  
Bookings: iticket, tel: 361 1000;  
School Holiday Programme, tel:  
Linda 818 8791

#### **Pauline Grogan Enterprises** presents: **500 Letters** directed and adapted by **Margaret-Mary Hollins**

An inspirational tale written and performed by actor Pauline Grogan.

Date: October 31—November 1  
Time: 8pm  
Bookings: iticket, tel: 361 1000

#### **Triple Goddess Middle Eastern Student Dance Show**

Featuring beautiful women from many cultures dancing Middle Eastern, Russian, Iranian, and Spanish forms to accompaniment by Iraqi musicians.

Date: Sunday 19 October  
Time: 1—3pm (doors open 12.45pm)  
Fee: adults \$20; children & senior citizens \$15  
Bookings: Tania Mas'ouda, email: medherb@xtra.co.nz. (there will be no door sales)

#### **Blaze Dance presents: 'Just Be' Fashion Show**

An evening showcasing the freshest designs from 'Telios' delivered through dance, live music, singing and animation.

Date: October 18  
Time: 7pm  
Fee: adults \$20, children \$10 (12 yrs and under)  
Bookings: contact Helen, mob: 021 113 7825; email: kingdom\_blaze@hotmail.com

#### **Rhythm 'n' Steps presents: 'Tinsel Magic' and 'Let it Rain'**

The community dance company's delightful junior show.

Date/Time: October 25, 3pm;  
October 26, 12pm  
Fee: adults \$19.50; seniors/students \$17.50; child \$9

#### **Rhythm 'n' Steps presents: 'Fairy Fashion' and 'Radio Ga Ga'** The company's senior show.

Date/Time: October 25, 7.30pm;  
October 26, 5.15pm  
Fee: adults \$19.50; seniors/students \$17.50; child \$9

#### **The Magic of Kalina Dance and Gypsy Strings Concert**

A wonderful afternoon of Gypsy and European music and dance, with Russian souvenirs on sale and a café in the foyer from 1pm onwards.

Date: November 2  
Time: 2pm (café opens at 1pm)  
Fee: adults \$20, children \$12  
Bookings: tel: 525 7260; email: cossak@clear.net.nz

#### **AUT University, Bachelor of Dance Showcase 2008**

A compilation of choreography and performance pieces presented by this year's Bachelor of Dance students and dancers from AUT Dance Collective.

Date: November 13  
Time: 730pm  
Information: contact Lea Healy, AUT University, tel: 921 9999 ext 7857; email: lea.healy@aut.ac.nz

## Titirangi Theatre

#### **Midsummer Night's Dream** directed by Liz Watkinson



Oberon and Titania, played by John Tamihere and Dorren Kemeys

Shakespeare's magical Midsummer Night's Dream is the original romantic comedy! Quarrelling lovers, a man transformed into an ass, King and Queen of the Fairies and the very funny band of bumbling yokels—these are just a few of the wonderful characters in a well loved play which appeals to all ages.

Date: September 30—October 18  
Time: 8pm; additional 6pm performance October 5; matinee October 11  
Fee: \$20 adults, \$15 concession, \$10 students with id. All tickets \$10 on Wednesdays  
Venue: Lopdell House  
Bookings: Titirangi Pharmacy, tel: 817 7658

## Waitemata Theatre

#### **Wait until Dark** directed by Peter Mason

An exciting thriller that was made into a classic movie starring Audrey Hepburn. A blind girl living alone must outsmart intimidating villains posing as policemen.

Date: October 1—11  
Venue: Corban Estate Arts Centre  
Bookings: tel: 838 7361

#### **StarFish Magic presents: I LOVE CINDERELLA!**

Interactive children's show with live music, original songs and dances.

Date: October 7—9  
Time: 10.30am & 1pm daily  
Venue: Western Springs Community Garden Hall, 956 Great North Rd.  
Fee: \$7.50, \$5 groups (8+), free under twos  
Bookings: tel: 827 2300, email: info@starfishmagic.com

## education

See the back page for contact and booking information:

### Dynamic Theatre Classes 4 Youth: Term 4

Tutor Tui Mamaki combines elements of theatre, dance, mask work & storytelling to take participants on a dynamic journey in devising their own performance. Develops teamwork, confidence, spontaneity and creativity. Numbers are limited. Please enroll early to avoid disappointment.

Venue: Titirangi Theatre, Lopdell House  
Date: Tuesdays, October 28—end of school term  
Time: 3.30—4.30pm for 7—12 year olds; 5—6pm for 13 years and older  
Fee: \$100 (8wks)

### Playhouse Theatre: November Workshops

Covering: Stage and Production Management, Lighting and Technical, Sound, Auditioning and Stagecraft.

Fee: adult members \$10, adult non-members \$15, students \$5

### Soul Centre for Body and Mind

SOUL has a fantastic October/November line up of national and international workshop facilitators as well as our yearly series of SRT and AI Wunder ongoing practice groups:

#### Heart Wisdom III

Lorraine Blackley hosts the third of her heart wisdom workshop series. Through working with a creative process of discussion, imagination, drawing, writing and brainstorming, craft your desired future. Restore your ability to use and trust your heart wisdom. Be relaxed, inspired and rejuvenated.

Date: October 18  
Fee: \$95

#### Heart Wisdom Support Group

We have a monthly ongoing support group for those already familiar with Lorraine's way of working.

Dates: October 16, November 13

#### AI Wunder's Performance Workshop

AI Wunder will be coming from Australia to take this liberating performance workshop. His philosophy is that performance is for everyone, not just highly skilled professionals.

Date: November 7—9  
Bookings: book now and come to a practice group meeting at SOUL on 12 October.

#### Embody the Unknown Workshop

Director and founder of SOUL, Wilhemeena Gordon, will be facilitating this workshop for those willing to extend themselves on physical, emotional and mental levels. Daily sessions will focus on Release Technique, Contact Improvisation, Butoh, improvisational scores and meditative performance practice.

Date: October 25—27  
Fee: \$200

#### Wu Tao, The Dancing Way—Dancing the Elements Workshop

Dance your way to health, peace and vitality! A two day workshop that uses dance, music and meditation to balance the Qi (life-force energy) in the body. During this workshop you will learn the theory and practice of the 5 basic Wu Tao dances and deepen your connection to nature through the five Chinese elements of air, water, wood, fire & earth.

Date: November 1—2  
Fee: \$195

writing  
out  
west

## events

### Waitakere Writers Group

The Waitakere Writers Group meets once a month. Members meet to discuss their work in a structured manner and receive assignments. During the year we deal with topics like travel writing, biography and autobiography, and poetry both humorous and serious.

It has become traditional for Waitakere Writers to combine a Christmas Party with the performance of several sketches, written and performed by members, for the December meeting. An invited audience always looks forward to this event. Members are already assembling their material for these playettes and writing and rehearsing will occupy much of the remaining months of the year.

Waitakere Writers is a happy and friendly group which continues to attract new members who, without being snooty, take a serious interest in improving their writing. Besides the work and assignments given out at meetings and workshops they are encouraged to enter writing competitions or further their experience at university or other types of writing courses. Membership is open to all for a small annual fee.

Date: on the second Saturday afternoon of each month  
Time: 2—4pm  
Venue: Corban Estate Arts Centre, Henderson (in the Church behind the Homestead and Gallery)

## education

### Waitakere Writers Group Workshop

Tutor Joan Rosier Jones, author of several novels, will concentrate on the short story form. Joan is highly experienced in running workshops and well known at literary weekends. This workshop is limited to twenty-four participants and is already almost fully booked.

Date: October 11  
Time: 12.45—4.15pm  
Venue: Corban Estate Arts Centre, Henderson

# contact out west

## an alphabetical list of our contributors

### Artlink Coordinator

Eve Tonkin  
Waitakere City Council  
Private Bag 93 109, Waitakere City  
tel: 836 8000 extn: 8934  
email: Eve.Tonkin@waitakere.govt.nz

### Community Arts Coordinator

Julie Nash  
Waitakere City Council  
Private Bag 93 109, Waitakere City  
tel: 836 8000 extn: 8934  
email: Julie.Nash@waitakere.govt.nz

### Chelsea Potters

304 Glengarry Rd, Glen Eden  
tel: 813 3824

### Corban Estate Art Centre (CEAC)

426 Great North Rd. Henderson  
tel: 838 4455  
email: info@ceac.org.nz  
www.ceac.org.nz

### Dynamic Theatre Classes 4 Youth

Titirangi Theatre, Lopdell House  
tel: 8128 683  
mob: 021 155 55 82  
email: tuimamaki@gmail.com

### Elevation Café

Scenic Drive  
tel: 838 2283

### Flava Out West/Oceania Festival

Stephanie Harawira, Ezekiel 33 Trust  
tel: 818 4491  
mob: 021 129 7448  
web: www.ezekiel33.org/portal/

### Flax Café

tel: 838 1055 (bookings)  
email: charlotte@charlottejohansen.co.nz.

### Flicks@Titirangi

tel: 817 5884  
email: info@flicksattitirangi.co.nz

### Heartstrings Cello & Guitar Duo

16 Highland Ave, Titirangi  
email: heartstrings@paradise.net.nz  
www.heartstrings.co.nz/index.htm

### Hobsonville Art Club

Margaret Caldwell  
tel: 416 7487

### Lopdell House Gallery

418 Titirangi Rd., Titirangi

tel: 817 8087  
email: info@lopdell.org.nz  
www.lopdell.org.nz

Art Education, Iona Matheson  
tel: 817 8087 extn: 204  
email: education@lopdell.org.nz

### Pacific Arts and Cultural Centre

Lorna Andrew  
Corban Estate Art Centre  
426 Great North Rd. Henderson  
tel: 838 3205  
email: pacifica.arts@xtra.co.nz  
www.pacificaarts.org

### The Packing Shed Gallery and Cafe

99 Parrs Cross Rd, Oratia  
tel: 835 1557  
email: packingshed@xtra.co.nz  
www.thepackingshed.co.nz  
hours: 7 days, 9am—4pm

### Playhouse Theatre

15 Glendale Rd., Glen Eden  
tel: 818 5751 or 021 215 1271  
email: enquiries@playhousetheatre.org.nz

Theatre Education, Sarah  
mob: 021-166-3069  
email: sarah\_reaburn@hotmail.com

### Project Twin Streams

tel: 839 0400  
www.twinstreams.org.nz

### Rutherford College Community Ed

Andrea Cameron  
Kotuku Street, Te Atatu Peninsula, Auckland  
tel: 834 4099  
fax 834 4011  
email: commed@rutherford.school.nz  
web: www.westaucklandcomed.co.nz

### Sally Stockwell Voice Workshop

tel: 817 2287  
email: sallystockwell@gmail.com

### Signal Gallery

505 Hwy 16, Kumeu  
tel: 412 7052  
hours: closed Mondays

### Soul-Centre of the Body & Mind

18 Huia Rd., Titirangi  
PO Box 60415, Titirangi  
tel: 817 3051  
email: info@soulcentre.co.nz  
www.soulcentre.co.nz

### Steiner Watercolour Painting Workshop

Titirangi Rudolf Steiner School  
5 Helios Place, Titirangi  
Bookings, Isabelle  
tel: 811-8871  
email: i.krauskopf@slingshot.co.nz

### TCAC, Upstairs Gallery

Level 1, Lopdell House  
418 Titirangi Rd., Titirangi  
tel/fax: 817 8030  
email: upstairs\_lopdell@xtra.co.nz  
www.upstairs.org.nz  
hours: 7 days, 10am—4.30pm

### Titirangi Theatre

416 Titirangi Rd., Titirangi  
tel: 817 5951 (theatre); 817-7658  
(bookings at Titirangi Pharmacy)  
www.titirangitheatre.co.nz

### Titirangi Potters

Titirangi Community House,  
South Titirangi Rd.  
tel: Bryan Nelmes 813 1613  
email: potters@titirangipot.co.nz

### Waitakere Writers Group

Bernard Holibar  
tel: 818 9349  
email: bernardhol@xtra.co.nz

### Waitakere Central Community Arts Council (WCCAC)

PO Box 21447, Henderson  
tel: 838 5733  
email: wccac@xtra.co.nz  
www.waitakere-arts.co.nz

### Waitakere Enterprise Seminars

Damian Bennett  
Central One, 2nd Floor, 4 Henderson Valley  
Road, Henderson  
tel: 968 8555  
email: damian.bennett@whkgc.com

### Waitemata Theatre

Corban Estate Art Centre  
426 Great North Rd., Henderson  
tel: 838 7361 (bookings); 827 8561  
(membership)

### West Coast Gallery

Old Fire Station, Piha  
P.O. Box 99, Piha  
tel: 8128 029  
email: enquiry@westcoastgallery.co.nz  
www.westcoastgallery.co.nz  
hours: Thurs.-Sun., 10am-4pm

If you have material for Artlink or  
would like to go on our mailing  
list, please contact us at:

Community Arts Coordinator  
Waitakere City Council  
Private Bag 93 109  
Waitakere City  
tel: 836 8000 ext 8934  
email: Eve.Tonkin@waitakere.govt.nz

