

ArtLink

Waitakere City's
Arts Newsletter
Nov-Dec
2007

The Schools' Trash to Fashion 2007



This year, The Schools' Trash to Fashion awards at Westfield, West City in November promises to be a dynamic showcase of creativity from our talented youth. Over 75 entries from schools throughout the region will be competing for 23 awards. Each garment is made by hand from reused or recycled materials.

In addition to the criteria-based, professionally judged awards for primary, intermediate, and secondary school categories, there will be a PEOPLE'S CHOICE AWARD. Come along to the shows and cast your vote for the garment you like the most. Voting papers will be in the Western Leader during the week prior to the show, and the People's Choice Award winner will be announced in the Western Leader the following week. FREE entry. For further info contact Jeanette Aldridge Ph 836 8000 ext 8431. Email: Jeanette.Aldridge@waitakere.govt.nz

Project Twin Streams Eel project

Project Twin Streams continues to use art and creative events to raise awareness of what lives in our streams and the impacts of our human activity. One of the key art projects for late 2007 is the construction of a 10 metre Long-fin eel sculpture, which will be situated within the Pacific area at Corban Estate Arts Centre.

With the message *healthy eels need healthy streams* the installation, which is due to be unveiled late November, is very environmentally friendly, with recycled materials featuring strongly in its construction. The steel eel frame was abandoned by a previous artist. A carved stone from the old Henderson Town Hall, which was found nearby

will form one of three seats and an old tram line track will also be incorporated by artist Bruce Courtney. Around three hundred Maori and Pacific tiles designed and made by five groups - Liston College, Henderson High School, Mother of Divine Mercy

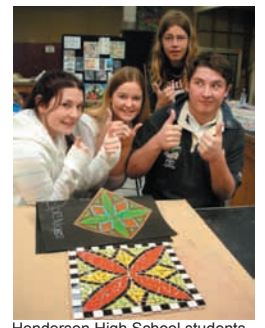


Bruce Courtney and team working on eel

Community Group, Beautiful Daughters (an alternative education school group for teenage girls) and the Pacific Mamas will decorate the sculpture. The Eel project is managed and coordinated by Janet Holt and and Norbryn Eyre with funding from Creative Communities.



Liston College students with tile designs



Henderson High School students with tile designs

Mary Ama, Pacific Arts Advocate, says, 'I would love to see the eel named Moana, because it celebrates the incredible journey of our long fin eels - who migrate to the Pacific from NZ to spawn. This eel sculpture encourages everyone to revisit their cultural history and will enable us to retell these wonderful stories to children who visit the site.' Enquiries: Janet Holt ph 836 8000 extn 8460.

Community Arts

Summer is almost here and with it comes a flurry of festivities and events happening throughout Waitakere designed to make the most of the weather and the Christmas spirit. The **Going West Books and Writers Festival** is now over and hats off to Anna Fomison and the Going West team who pulled off a very successful series of events. **Storyfest** drew the crowds for its delightful mix of storytelling, performances, workshops and displays.

Glen Eden Foyer Displays: Space is available for artists and groups to display their work in secure cabinets at the Glen Eden Library/CAB. Contact me if you are interested.

Waitakere Artists' Open Studio Weekend. Sat & Sun March 1 & 2, 2008.

Registration forms will be distributed shortly for the upcoming Artists' Open Studio Weekend. This is a great opportunity for our local artists to open their home studios to the public to visit. Artists can register for one day or the whole weekend or take part in an artist's cluster. A bus tour is planned. To register or enquire please contact me.



With Christmas just around the corner it can be a stressful time for some families, but Christmas doesn't need to come out of an expensive store.... check out the listing of FREE Christmas events in this issue.

Children's Christmas Giftmaking Saturday December 8th. FREE.

2 sessions: 10 -12.30 & 1.30 - 3.45.

Te Atatu Peninsula Community Centre, 595 Te Atatu Rd, Te Atatu Peninsula. An opportunity for school children to make gifts for their families.

Over 600 children can attend this wonderful day to make gifts. This event is supported with generous donations of resources from local businesses.

Volunteers are needed to help on the day and to donate items suitable for making into gifts. Clean out your storage and contact me if you can donate any of the following: soap bars, fabric, lace, ribbon, plants, good condition plain cups, plates, bowls and plant pots suitable for painting, new socks, beads, jewellery pieces, collage items, ceramic paints, sewing materials, hair combs & clips, plastic flower lei's, dried flowers, tape, coloured plastic bags, pens, glue, glitter paint, photo paper and anything you may think is useful and could be turned into something wonderful for Christmas.

To volunteer or donate items please contact me. To register your children please phone 839 0400 (children must be registered to attend and be accompanied by an adult).



Take time to enjoy the festive season, and remember to say thanks to all of those wonderful community people who volunteer to make exhibitions, events and festivals happen. Julie Nash, Community Arts Coordinator, Waitakere City Council. Ph 836 8000 extn 8934. Email: Julie.Nash@waitakere.govt.nz

Events out West

Grow Marketing

Affordable Business Start Up Coaching

Grow marketing are currently offering *StartUp Coaching* to students and those wanting to start up their own businesses (including artists and self employed people).



If you've never set up a business before understanding where to begin and what is required of you can be difficult. In two hours all the main aspects that you need to know before taking the plunge will be covered, including becoming GST registered, finding your 'USP', implementing a marketing strategy, and determining your hourly rate. Each session is personalised to your business sector and will have you well on the way to understanding where to start - and what to spend your time on.

Spaces are available for November and December. For more information contact Grow Marketing on 0508 LETS GROW (538 747), or email yes@iwanttogrow.co.nz

McLaren Park & Henderson South Community Festival

A black poster for the 'People Pride Place Community Festival'. At the top is a yellow star. The text reads: 'People Pride Place Community Festival', 'Come celebrate your local community', '3rd November 2007', 'Time: 2-5 p.m. Henderson Valley Park in front of Henderson Valley Pony Club'. Below this is a section for 'FREE ACTIVITIES' listing 'Petting Farm' (with a cow icon), 'Pony Rides' (with a horse icon), and 'Great Entertainment' (with a heart icon). There is also a 'Food' icon with musical notes. A circular graphic contains the text: 'Announcing the Winners of the Good Neighbour and Business in the Community award'. At the bottom, it says 'Community groups info Stall,' and a green box contains the text 'Walk there and be in for spot prizes!'. The footer features the 'MPHS' logo, the website 'www.mphs.org.nz', and the phone number '09 838 4820'.

The McLaren Park and Henderson South Community Initiative are dedicated to improving their community. They initiate many activities, including after school programmes and events for the local community. Drop into the office on Bruce McLaren Road (opposite Bruce McLaren Intermediate) or ph 838 4820 for further enquiries.

West Auckland Music Showcase

Flax Café is proud to present the West Auckland Music Showcase. A night of performances by fabulous West Auckland musicians, started last year by Charlotte Johansen, now has a new home.

Tina Klay from the newly opened Flax Café at Kiwi Valley, 308 Henderson Valley, Henderson, is really excited to be offering a venue for local musicians to play and showcase their talents. The first Showcase night is Friday 23 November starting at 7.30 sharp with 5 performers. Names are yet to be confirmed.

Charlotte had a lot of interest in the first music nights that she organised and wants to continue them, not only to showcase West Auckland musicians but also West Auckland.

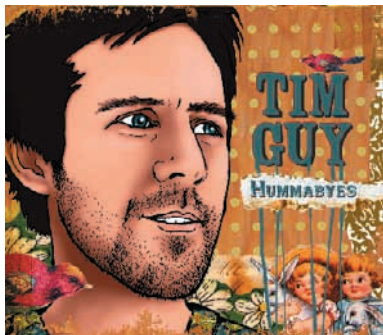
"Performance slots will also be available to musicians from outside West Auckland who want to play here 'cos West is best!" exclaims Charlotte.

Anyone who would like to perform should contact Charlotte ph 021 02249205. \$10 door charge. Tickets at the venue. Email: charlotte@charlottejohansen.co.nz

Tim Guy – Hummabyes New Album release

Tim Guy has just released his second album

Hummabyes and is coming to play a gig at the Titirangi Theatre on Friday November 16th with his band 'The Tutus'. Tim will be supported by singer/songwriter Anna Coddington, former lead singer of the band *Duchess*, who is about to release her debut solo



album early next year. Tim plays catchy, whimsical, alternative, country flavoured Indie-pop songs guaranteed to have you tapping your foot and humming along.

The new album features special guest appearances from a few of Tim's mates, all NZ music luminaries, including Anika Moa, Jeremy Toy, Age Pryor, Paul McLaney and Steve Abel.

Tim and the band are playing 29 gigs around New Zealand in November and December to promote **Hummabyes**. He has just been confirmed for WOMAD next year.

Tim Guy and The Tutus with Anna Coddington 8pm, Fri 16 Nov. Tickets \$20. Presales from Titirangi Pharmacy. \$25 door. For more info contact: Nigel Braddock ph 027 545 6887 email: nigel@monkeyrecords.com

Titirangi Festival of Music Update

Plans are underway for the next very popular Titirangi Festival of Music. The opening will be on the 29th March 2008 at the Tangiwai Reserve in Huia Road, Titirangi with an outdoor concert featuring the **One Million Dollars** band. A selection of workshops is being planned for children and adults in everything from record production to drumming circles. Also planned is a memorial concert for the well known and well loved late John Green, a Trustee for the Festival and popular local clay artist.

Our website – www.TitirangiFestivalofMusic2008 - will be online again in December with full details of concert acts, but it can be announced that there will be major concerts from the Waitakere City Orchestra, SJD and Pitch Black. Keep an eye on the website for updates.

Condensed

A one-night only 'local artists exposé'.

13 West Auckland Artists including: painters, photographers, poets, musicians and a sculptor. At Barossa Licensed Café and Bar, Titirangi Village. Fri 23rd Nov, 7pm till late. Free entry.

Works will be available for purchase on the night.

Cash sales or by arrangement, conditions apply.

Further info ph Jess 021 133 0462.

email: jkestle@hotmail.com

Affordable Art Sale at Hobsonville Art Club

The Hobsonville Art Club are organizing their annual art sale. A range of work will be available from selected artists. Paintings will be for sale from only \$30 - \$150. Ideal christmas gifts for that special person.

Sunday 11 Nov. from 9am to 4pm at Hobsonville Hall.

Enquiries: contact Vivian Haszard.

Email: v.haszard@clear.net.nz

Art Exhibition and Sale

Sat 17-Sun 18 and Sat 24-Sun 25 November 2007

Open from 9am to 4pm.

West Auckland Artists **Linda Eccles** and **Steve Matthews** are delighted to invite you to visit their sixth annual art exhibition and sale over 2 weekends at Swanson Railway Station (next door to the café), Swanson Road, Swanson.

Oils, watercolours and acrylics at very affordable prices. Mainly "traditional style" paintings ranging from \$20 - \$400. Please tell and/or bring your family and friends.

The first weekend will be "Images of NZ" with landscapes, NZ birds and flowers, etc. The second weekend will be devoted to all subjects – over 80 works will be on offer over the two weekends.

For further information, please contact Linda ph 837 0108 or lindaeccles@hotmail.com

Optical

A group of like-minded artists will be exhibiting their works at Titirangi Beach Hall, Titirangi Beach from 6pm, Thurs 13 Nov until 6pm, 16th Nov.

The variety of works will have a layered, eclectic, multi-ethnic theme. The Thursday opening will feature music and multi media presentations.

The artists include:

Christine Blaikie (photography), Claire Inwood (doll maker), Anita Ferrick (mixed media), Phil Platt (photography), Deanna Platt (poetry), and Kaitlin Casey (yoga).

Free entry. All works for sale.

Enquiries email:

ferricks@xtra.co.nz



Graffiti by Christine Blaikie

Oceania Festival 2007



The Ezekiel 33 Trust invite you to the 2007 **Oceania Festival** (Saturday 24 Nov) and **Watchmen's Family Christmas** (Sunday 25 Nov).

Both days are from 10am - 6pm and will be at Parris Park, 479 West Coast Road, Glen Eden.

Bring your family and come for a picnic. Entertainment, rides, stalls, performing arts and FREE family fun, with loads of Christmas giveaways.

Enquiries contact Stephanie Harawira ph 021 129 7448.

Email: events@ezekiel33.org.nz

SANTA is coming to town!

and with him comes a whole selection of FREE festivals and parades for you to take part in and soak up some cheer for the festive season.

Waitakere Christmas Festival

Sat Dec 1, 5 – 9pm, Parris Park, Oratia.

For further info contact Christine Shepherd, ph 836 3239

Falls Christmas Carols

Fri Dec 7, 7 – 9pm. Falls Reserve, Henderson.

Traditional Carol singing.

For further info contact Wayne Bainbridge, ph 834 8909

Glen Eden Christmas Parade

Sat 24 Nov: 1:30pm start.

For further information contact Bryan, ph 818 4610

Henderson Rotary Santa Parade

Sat 24 Nov from 10:30am.

For further info contact Maxine, ph 027 657 3810

New Lynn Santa Parade

Sat 17 Nov: 10am start.

For further information contact Trevor, ph 0274 528 241

Te Atatu Community Christmas Parade

Sat 1 Dec, 9am start

For further infor contact Jenny, ph 027 268 1468

West Harbour Christmas Parade

Mon 10 Dec, 6pm start

For further information contact Terry, ph 021 918 980

Children's Christmas Giftmaking Dec 8th 10 - 4pm

Register your children for FREE Children's Christmas giftmaking, donate resources or volunteer your time.

(see information on page 2). Ph 836 8000 extn 8934.

Flicks@Titirangi

Flicks @ Titirangi had two sell-out screenings in October at the Titirangi Theatre in Lopdell House, Titirangi. "The success of the two very different movies show that the movie going public are willing to take risks and pay to see non-mainstream movies", said Catherine Davidson.

Flicks @ Titirangi are delighted the venture has secured a distribution deal with Rialto Distribution and are actively pursuing another high profile distribution company.

The final dates for 2007 screenings are 9 and 23

November. If you would like to receive email updates

from Flicks@Titirangi, please send your email details to

info@flicksattitirangi.co.nz

CELTICANZ

Celtic Music Camp

A weekend of Celtic music workshops, concert, recreation and 'good times' with people who share an interest in Celtic music and dance traditions amongst a peaceful and natural environment. This year is establishment year and you are invited to come along for the whole delightful weekend.

'The music camp' will run between the 2nd and 5th of November 2007. Join us right by the sea at the Kiwanis Huia Camp, an ideal spot resting beside one of New Zealand's best native rainforests and coastlines where comfortable shared accommodation is provided. During the weekend musicians of different ages and levels of musical experience can either choose from daily workshops on two main musical instruments, fiddle and guitar, or join a mixed-instrument workshop for a more challenging experience!

Featuring Kenny Ritch (Fiddle) and Bob McNeill (Guitar/Bouzouki/Vocal) from the renowned Scottish duo 'Ben the hoose,' and Jono Lonie (Fiddle, Mandolin, Uilleann Pipes, Whistles), our Celtic music virtuoso from New Zealand.

Location: Kiwanis Huia Camp 1340 Huia Road, Little Huia.

Weekend passes and one day passes available.

To register contact celticanz@gmail.com

Website: www.stringworkshop.co.nz/celticanzindex.htm

Starfish Magic Performances

StarFish Magic are performing a series of FREE Saturday shows around libraries in Waitakere to celebrate the release of Star's new book "Star Fairy's Top Secret Guide to Fairyland." (Pan MacMillan, Australia). Join Star Fairy and Fish the Wizard with stories from Star's book, songs, dances and real magic!! No booking required. Everyone is welcome!

TIMES AND DATES:

Sat 27 October, 2pm Titirangi Library

Sat 3 November, 2pm New Lynn Library

Sat 10 November, 10.30am & 2pm Massey Library

Sat 17 November, 10.30am & 2pm Henderson Library

Phone: 827 2300. Cellphone: 021 023 15184

Website: www.starfishmagic.com

Going West - 'A Festival of Many Treasures'

According to David Larsen, writing in Canvas (Weekend Herald, 22-23 Sept 07) this year's Going West Festival in September 2007 was "a festival of many treasures, including excellent food, much milling and chatting and drinking of wine - booklovers hobnobbing with writers and publishers talking to booksellers". The theme for this year was '*Food for Thought*' and according to Timothy Brunson (Titirangi Tatler, Oct 07) "Like a good meal, there was a fine balance between the light and the substantial, the sweet and the savoury, the spicy and the mild".

The literary weekend entertained the audience with a menu of literary treats, including Mayor Bob Harvey speaking about his book '*The life and art of Dean Buchanan*', songster and poet Andrew Fagan and Irish playwright Ursula Rani Sarma.

The size of the audience at this year's event reinforced the belief that the city views Going West as a flagship event and that Waitakere is an arts-rich and arts-literate city. Keep September 2008 free on your calender for next year's event.

Enquiries www.goingwest.co.nz

Performing Arts

Goudge Drama

Rimu Glade Studio, 4 Rimu Rd, Oratia.
Ph 814 9744 or email gougedrama@zip.co.nz

Acting Training for Adults

with tutor John Goudge - enrolling now for term 4.
John has been drama tutoring for over a decade, (including six years at the Titirangi Theatre) & is a well-known West Auckland actor, director & musician. His studio in the bush of the Waitakere Ranges is a tranquil place to learn & develop.
6 week courses on Mon or Wed evenings 7.30 – 10pm
Monday nights: Introduction to Acting. Nov 5 – Dec 10.
Wednesday nights: Acting Tune-Up. Nov 7 – Dec 12
Both courses finish with a performance on the final night. Term fees: \$125.

Playhouse Theatre

15 Glendale Rd, Glen Eden. Ph 818 5751
Email: enquiries@playhousetheatre.org.nz

South Pacific musical by Rodgers & Hammerstein, presented by Playhouse Theatre Inc. Featuring classic songs.
Sat 3 Nov - Sat 17 Nov. 2pm & 8pm.
Tickets: ph 361 1000 or www.iticket.co.nz

In Step with Academy 'D' Dance Company. A colourful showcase featuring a variety of dance styles with special guest Krystal Stuart from 'Dancing with the Stars'
Tuesday 20 Nov. 6.45pm
Bookings ph theatre. Email academyd@xtra.co.nz

Dance...Down the Rabbit Hole with Bev Birch School of Dance. Enter the world of imagination with weird and wonderful characters who dwell in that mysterious "hole".
Fri 23 Nov, 7pm. Sat 24 Nov, 7pm & Sun 25 Nov 2pm.
Tickets: Ph 361 1000 www.iticket.co.nz

A Night at the Movies with Anjannette's Academy of Modern Dance. Dancers bring the magic of movement to songs from movies old and new.
Sat 1 December 1pm & 7pm.
Bookings ph 832 6008 or 021 036 4274.

Gypsy Strings & Kalina Dance Concert with Gypsy and European music and dances. Special guests Kralj Tomislav Group and Happy Kids. Expo and sale of Russian items and concert.
Sun 2 Dec, 1.30pm onwards.
Bookings Ph 525 7260. Email cossak@clear.net.nz

Folklore 2007 Concert with Dalmation Cultural Society. Featuring dance groups, choirs and orchestra. A dynamic cultural experience.
Sat 8 Dec. Tickets available at the door.

The Deadly House Party with Interacting Trust - a disability arts theatre company. Romantic thriller/murder mystery set in a stately home in the 1930's with singing, dancing and multiple murders!
Thurs 20 Dec, 2pm & 7.30pm. Fri 21 Dec, 7.30pm.
Bookings ph 849 5595.

Christmas Wishes with 'Trusts' Waitakere Brass. Enjoy an evening with the band and celebrate the festive season. Sat 22 Dec, 7.30pm.
Bookings Ph 361 1000 or www.iticket.co.nz

Show West Singers

This Christmastide presents the best of both worlds - a programme celebrating the traditional and the modern. Music from Mozart, Handel and Haydn to a 21st century Jazz Mass - expect the unexpected.
Titirangi Presbyterian Church, Titirangi Dec 1, 7.30 pm,
St Michael's Catholic Church, Remuera, Dec 2, 4pm,
St Michael's Anglican Church, Henderson, Dec 8, 7.30pm.
Tickets at door. Waged \$15, Unwaged \$10.
Enquiries email: KPatterson@hortresearch.co.nz

THIS CHRISTMSTIDE
AN ADVENT FEAST OF CHORAL MUSIC FROM THE GREAT COMPOSERS TO THE MODERN INNOVATORS

Titirangi Presbyterian Church
Titirangi, Dec 1st, 7.30am
St. Michael's Catholic Church
Remuera, Dec 2nd 4.00pm
St. Michael's Anglican Church
Henderson, Dec 8th, 7.30pm

SHOW WEST SINGERS
Tickets at door
Waged \$15
Unwaged \$10

Soul - Centre of the Body & Mind

18 Huia Road, Titirangi. PO Box 60415 Titirangi.
Email: info@soulcentre.co.nz or wilhemeena@soulcentre.co.nz Website: www.soulcentre.co.nz. Ph 817 3051,
Summer with SOUL. As the weather heats up, SOUL-centre of the body and mind brings on it's new Summer program.
In November, **Al Wunder (Theatre Improvisation)** and **Martin Hughes (Contact Improvisation)** will be holding workshops and Jams suitable for beginners and experts. Also in November, the **divinely zen weekend of Wu-Tao – The Dancing Way**, a way to bring health, fitness and vitality to your life through a gentle martial arts-based dance form.
In December free your Voice with **Sally Stockwell**, find ways to release postural habits and tension with **Wilhemeena Gordon** teaching Skinner Releasing Technique and for the kids, a NEW 4-day **CHILDREN'S SOMATIC SUMMER SCHOOL** featuring kids yoga, dance, site-specific performance and yummy organic lunches!
January once again promises the Annual **SOUL SUMMER SCHOOL**, with international guests from USA and Australia.
For enquiries and bookings: Ph 817 3051.

Titirangi Theatre

Lopdell House, 418 Titirangi Rd, Titirangi.
Ph 817 5951. www.titirangitheatre.co.nz
Hawaiian Pixie – A New Zealand Comedy by new Titirangi playwright **Katherine Parks**
Directed by **Liz Watkinson**. A very modern take on an old story of heartbreak and romance in Hawaii.
Season: 27th Nov - 8th Dec. Tues - Sat nightly at 8pm \$20 & \$15. \$12 Matinee Sat 1st Dec. Gala Opening Night 27th Nov - \$25 Tickets: Titirangi Pharmacy ph 817 7658
Group Bookings ph Liz 817 5812.



Theatre4Youth with Tui Mamaki

Improvisation and devising of original theatrical works with ages 7 and up. Great fun! We have a limited number of places still available on the course. Cost \$120 per child. Class times: Juniors 7-10yrs: 3.30pm, Intermediate 10-12yrs: 4.30pm, Teenagers 13yrs+: 5:45pm.
Please contact Tui ph 021 155 5582
Email: tuiamaki@gmail.com

Waiatarua Theatre

At the Bach
with **Waiatarua Performing Arts**.
Directed by **John Goudge**.
You've never been on a holiday like this!
Waiatarua Theatre takes you away with this hilarious comedy soap-opera.
24 Oct - 3 Nov. Bookings essential.
phone 814 1850,
Email: wpat.tickets@xtra.co.nz

At the Bach
Presented by John Goudge
24 October - 3 November
Waiatarua Community Hall
811 West Coast Rd, Waiatarua, Waitakere City
You've never been on a holiday like this!
Performances Wed - Sat at 8pm
or Sunday 28 October at 6.30 pm
Tickets \$20/15 at 814 West Coast Road, Catherine St, Henderson
or **phone 814 1850**
or email wpat.tickets@xtra.co.nz

Trusts Waitakere Brass

Jazz Mania! 7.30pm, Sat, 24 Nov, The Trusts Stadium, Central Park Drive, Henderson. Tickets www.iticket.co.nz. Corporate packages available through byron@paradise.net.nz

Christmas Wishes 7.30pm. Sat, 22 Dec, Glen Eden Playhouse Theatre
Tickets: www.iticket.co.nz
For further news and information view www.waitakerebrass.com

Waitakere City Orchestra

WAITAKERE CITY ORCHESTRA MEETS "GYPSY STRINGS"

Sat Nov 3, 8pm. Titirangi War Memorial Hall, South Titirangi Rd.
Music from Russia, Hungary, Roumania & The Czech Republic
Featuring virtuoso violinists Miro Duna, Elena Abramova & Greg McGarity. Book with ITICKET www.iticket.co.nz, Ph 361-1000
Tickets also available at the door. Adults \$20, concessions \$15, kids \$10. Further enquiries ph 817-2930.
Email brigidbisley@gmail.com or view the website: www.wco.co.nz

WAITAKERE CITY ORCHESTRA
WCO MEETS GYPSY STRINGS
Music from Russia, Hungary, Roumania & the Czech Republic
With Virtuoso Violinists Miro Duna, Elena Abramova & Greg McGarity
Saturday, November 3rd, 8pm
Titirangi War Memorial Hall, South Titirangi Rd
TICKETS
www.iticket.co.nz or Telephone 361 1000
\$20 (adult), \$15 (concessions), \$10 (kids)
*This booking is subject to availability

Arts Out West

Corban Estate Arts Centre

426 Great North Rd, Henderson. Open 7 days
10am—4.30pm. Ph 838 4455 Fax 838 4488
info@ceac.org.nz website www.ceac.org.nz



CEAC holds regular, changing exhibitions. The gallery shop features a range of quality ceramics, jewellery, books and art works. Adult and children's art classes available. Rooms available for hire.

Public Eye - Arts Enterprise Seminar

Public Eye will offer insights and practical advice from leading authorities/personalities in print, television and web based media. A 'How To' guide on getting publicity, with a focus on methods that require little or no financial outlay.

Thur 22 Nov 9am-12.30pm. Fee \$25 (includes morning tea)

EXHIBITIONS

Pacific Vocation - Selected Artists. Runs until Sun 11 Nov, 2007
New Zealand and the islands of the Pacific share a unique spirit of developing new art practices that produce challenging, fresh work while preserving the core cultural identity of the artists. The young pacific artists included in this show have all taken a step forward and reassessed their culture and their surroundings to produce thought provoking works, often with a touch of humour and always with a message.

Material Concerns - Affordable Adornment. Selected Artists

Opening: Thurs 15 Nov, 6pm

Duration: Fri 16 Nov- Sun 9 Dec.

A gauntlet thrown down in challenge to all artists - be it sculptors, painters, potters, or jewellers to produce affordable pieces of jewellery or body adornment. The works will be made from materials not traditionally used for jewellery or adornment pieces eg. found objects, canvas, wood, paper, clay ... the list could go on forever! The challenge is not only to manipulate materials but to create a desirable object by stretching the boundaries of meaning - what makes an item precious? The materials? The artist who made it? Or subjective associations ... You decide!

Urban Archaeology: Digging It. Artists: Louise Dentice, Judy Meehl, Jude Rae, Hilary Kerrod & Helen Perrett

Opening: Thurs 13 Dec- Sun 20 Jan, 2008.

The Urban Archaeology collective is comprised of makers, sculptors and potters, and is a forum for the generation of ideas and experiments. *Digging It* is an exploration of the diaspora that exists in West Auckland and indeed, the rest of New Zealand.

Hodges Waterfalls - Christine Hellyar

Opening: Thurs 13 Dec, 6pm

Duration: 14 Dec - 20 Jan 2008.

A one room installation inspired by William Hodges painting, Waterfall in Dusky Bay, 1773. Hodges was the official draughtsman on Captain Cook's ship, Resolution. Cook carried with him various items, including cloth - tablecloths, handkerchiefs and printed reams for clothing or curtains to distribute as gifts or to trade with the indigenous people he encountered on his travels. Dusky Bay was the first stop of his second voyage and the family depicted in many of Hodges' paintings were therefore the first among many to be confronted with these particular modes of exchange. In this installation, Hellyar uses the same types of cloth to create her own waterfalls of colour and meaning, covering the walls with flowing drops of material, spilling onto the floor to puddle at your feet.

SUMMER SCHOOL 14-18 January 2008

Bookings accepted now for classes in the popular Summer School. For more information contact Corban Estate Arts Centre.

Chelsea Potters

Community Workshops, 304 Glengarry Rd, Glen Eden.
Adults and Children's classes available. Beginners, wheelwork, sculpture, any day, after school, weekends and school holidays.
All ages and abilities. Ph 813 3824.

Lopdell House Gallery

418 Titirangi Rd, Titirangi. Open 10am—4.30pm.
Open 7 days. Ph 817 8087 info@lopdell.org.nz
www.lopdell.org.nz

Portage Ceramic Awards 2007.

Until 9 Dec.

The Portage Ceramic Awards is the largest, most prestigious ceramic awards in New Zealand. The Portage Trust continues its growing support with the following awards:

Premier Award, \$12,000, Merit Awards, total prize money \$6,000 and the newly named John Green Waitakere City Artist Award, \$2,000

This years award winners are:

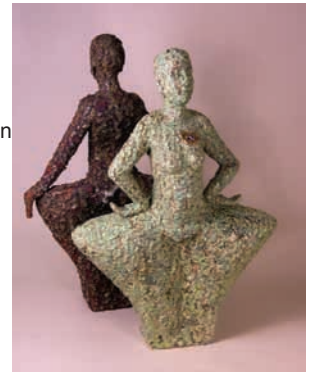
DeAnne Lawford-Smith, Premier Award Winner for *Heart of Glass & Keeping Quiet*.
John Parker, John Green Waitakere Artist Award Winner for *Lattice Bowl*.

Greg Barron, Merit Award Winner for *Altered Vase with Crackle Pattern*.

Tim Holman, Merit Award Winner for *Coco*.

Katherine Smyth, Merit Award Winner for *Squash*.

Onlie Ong, Merit Award Winner for *Dining*.



Heart of Glass and Keeping Quiet
by De Anne Lawford Smith

In Good Form -

The Abstract Art of Roy Good:

1968 - 2007.

13 Dec - 10 Feb 2008.

Roy Good's paintings are, without exception, instances of modernist abstraction. Consistently inventive, Good's works are deployments of the real 'building blocks' of painting - shape, colour, line & space.



Diamond Series by Roy Good

James Robinson

13 Dec - 10 Feb 2008,

Questioning, provoking, engaging and challenging - witness these new works from the latest McCahon Residency artist, James Robinson.

Gillian Taylor - Beauty or Beast.

Venue: Spiral Gallery upstairs

13 Dec - 10 Feb 2008

In this carefully choreographed photographic study, Gillian Taylor explores the hidden beauty of plastic bags.



Recent work by James Robinson

Artist Talks 10am, Fri 14 Dec.

Roy Good, James Robinson & Gillian Taylor will talk in the gallery about their work in the current exhibitions.

Art Classes Term 4.

Venue: Lopdell House Studio

Monday : Hands On Clay. Create wonderful Christmas presents and decorations for the family Xmas tree. Fee: \$120 includes all clay and firings. Discount for prompt payment. Date 15 Oct - 19 Nov from 3.30-5pm for bookings ph Tutors Lorraine 8168008 and Karen 8178968

Saturday: Rethink Drawing. Extend and challenge your drawing skills in a very stimulating and supportive environment. Judith will motivate you in many new directions and cover still life subjects through to life drawing. Starting mid November. Bookings and more info contact Iona Matheson 8178087 ext 204

Email: education@lopdell.org.nz

Open Studio 25 Nov, 10-2pm. Children aged 5 and up

Visit the Lopdell House Studio for some hands on fun making creative Christmas decorations and cards. This is a drop in session \$2 to cover materials. More info Iona Matheson 8178087

Term 4 Gallery visits and workshops for schools.

Workshops in Term 4 for schools are designed to be fun, skill based and stimulating. Lesson plans can be altered to suit themes if required.

Bookings and more info contact Iona Matheson 8178087 ext 204 or email: education@lopdell.org.nz

Pacific Arts & Cultural Centre

Corban Estate, 426 Great North Rd, Henderson. Ph 838 3205.
email: pacifica.arts@xtra.co.nz or website: www.pacificaarts.org

PACIFICA MARKETS

Every last Saturday of the month 10am-3pm
authentic handmade arts & crafts, jewellery, displayed art works,
variety of stalls, yummy food, hot & cold beverages, entertainment,
special performances. Come along and have fun.
Last Market Day for the Year 2007 'Christmas @ Pacifica Markets'
Sat 1 Dec 2007. You may find something special for Christmas, or
something sweet. Also, Santa will be coming.

THE PACIFICA MAMAS SHOP

Is now open Monday – Friday 10am-5pm.
authentic arts & crafts, jewellery, tivaevae pillow slips and more.

EDUCATION PROGRAMME

Pacifica experience workshops for schools.
Music & drumming, weaving with flax etc, leis; carvings on display
A real Pacifica experience with an Umu kai also available.

Enquires please phone Lorna Andrew, Pacific Arts Centre 838 3205

PACIFICA LIVING ARTS FESTIVAL

15/16/17 November at Pacifica Living Arts Centre.
School cultural performances, stalls, craft, workshops & food.
Contact Michelle Khan, ph 838 3205

Packing Shed Gallery & Café

99 Parrs Cross Rd, Henderson. Ph 835 1557
Open 7 days, 10am—4pm. Artwork for sale from a variety of
artists. Cafe open 7 days. Gifts and crafts for sale.
www.thepackingshed.co.nz
Email: packingshed@xtra.co.nz

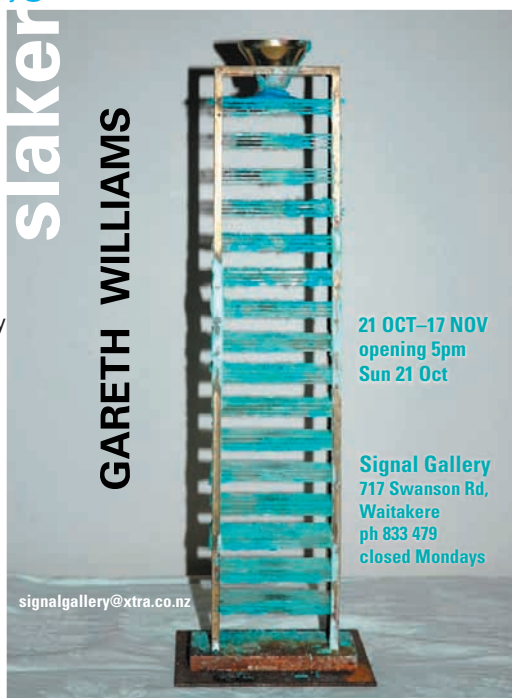
Rutherford College Community Education

Kotuku Street Te Atatu Peninsula Ph 834 4099
Fax 834 401. Email: commed@rutherford.school.nz
Community Education at Rutherford College offers a range of affordable
night time and weekend classes for adults. Classes run during school term
time and they are always changing to meet the needs of the Community.
Courses include watercolour painting, mosaics, fabric dying, pottery,
garden sculpture and more. For a full list of our courses please ring for a
FREE booklet or visit our website www.westacklandcomed.co.nz

Signal Gallery

717 Swanson Rd, Swanson. Ph 833 3479
Open Tue-Fri 10-5pm. Sat—Sun 10-4pm.
Email: signalgallery@xtra.co.nz

slaker GARETH WILLIAMS
Runs until 17 Nov.
To Slake -to disintegrate by combining with water [Concise Oxford Dictionary] Gareth Williams is looking at the processes of corrosion and decay but in fact these new sculptures of his are growing and changing by the addition of metal and crystalline salts. Some works are constructed in steel and use copper sulphate with water to form copper deposits. Others are brass and copper, use water and sea salt to create crystalline salt.

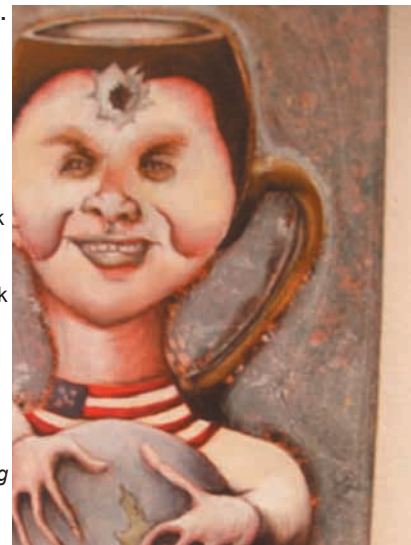


TCAC Upstairs Gallery

Level 1, Lopdell House, 418 Titirangi Rd, Titirangi.
Open 7 days, 10am-4.30pm. Ph 817 8030.
Email: upstairs_lopdell@xtra.co.nz www.upstairs.org.nz

PORTAGE MUG SHOW 2007.

Currently showing until Sun 5 November. This is a community competition exhibition sponsored by the Portage Licensing Trust whereby the humble mug is represented in many and varied forms. Come and check out the prize winning pieces! The *Waitakere Best Artist* award was won by Kevin Black for his Teapot which also won the *Best Teapot* award.



The judges; Glenys Scott of West Coast Gallery and Russel Walder decided that there needed to be a *Best Mug* award as there was currently no Best Mug award in the show. This new category *Mugshot* by Gail Edmonds was won by Maurice Williams with a lovely carved kauri mug. The 2 Junior Awards were awarded to students from Lynfield College with their teapots.

It's well worth checking out the wide variety on show.

The award winners were:

Youngest in show: Jayden Andrews

Junior merit: Vanessa Buchanen, Tracy Lupciki and Gerome Durainayagam.

Junior Awards: Maryanne Funaki and Crystal Faitau.

Adults: **Merit 2 dimensional mug:** Mary Webster & Liz Constable.

Best recycled or found object:

Nova Mattheson, Amber Winslow & Paul Jones,
Merit Award: Joanna Bagley and Karen Kennedy.

Best Tea set award: Rowena Coombes

Wild and Wacky: Alex Laubli

Best 2 dimensional mug: Gail Edmonds

Best Teapot: Kevin Black

Best mug in show: Maurice Williams

Best Waitakere Artist: Kevin Black.

Congratulations to all winners.



Junior winner by students from Lynfield College

TITIRANGI POTTERS 2007

Opens Thur 8 November 7-9pm until Sun 2 December.
Showcasing the extensive range of ceramic works from local artists and potters based at the Titirangi Potters Studio. This eclectic group present their annual exhibition, with an array of delicious and diverse ceramics. A perfect opportunity to purchase a present or perhaps a personal piece from this talented party of potters.
for more info contact www.titirangipot.co.nz

COOL YULE TCAC MEMBERS XMAS SHOW (at Upstairs Gallery)

Opens Wed 5 December until Thur 20 December 2007
Members Cash n' Carry Show. Bring or buy a bit of Christmas cheer for your loved ones this year.

New members are welcome.

Creative Communities small grants for art projects of up to \$500 are available through TCAC. For information on membership, exhibitions and grants please phone or email TCAC or drop in at the Upstairs Gallery, Lopdell House, Level 1.

Waitakere Central Community Arts Council

PO Box 21447, Henderson. Ph 838 5733.

Venues:

"The Studio" at CEAC, 426 Great North Rd, Henderson & Te Whanau Toi, 451 West Coast Rd, Glen Eden.

Email: wccac@extra.co.nz

Website: www.waitakere-arts.co.nz

Creative Communities small grants for art projects of up to \$500 are available through WCCAC.

Classes \$15 per session at "The Studio":

Acrylic or Oil with Ted Rogers.

Tuesdays 7 - 9 pm Saturday 10 am - 12 noon Saturday 12.30 - 2.30 pm and

Kids4Art with Marion Sutcliffe

Thursday from 3.30 pm - 5 pm

Acrylic Landscape with Lorna Allan

cost \$25 per day suitable for beginners onwards.

11th & 25th November 10 am - 3.30 pm.

Watercolour for beginners with Margaret Norwood.

Friday 10 am - 12 noon, "The Studio"

Classes at Te Whanau Toi:

Pastel and Line and Wash with Mary Gilligan,

Thursday 10 am - 12noon, Te Whanau Toi. 8 weeks per term cost: \$90 for WCCAC members \$80

Watercolour with Helen Steven,

Thursday from 1 - 3 pm, Te Whanau Toi

Painting a landscape in Oil with John Horton

at Te Whanau Toi. Workshops 9.30 am - 3.30pm \$60

Wednesday 14th November. John will demonstrate and advise you how to paint and mix colours. You'll go home with your finished painting.

Waitakere Trust Art Awards and Lincoln Green Sculpture Awards 2007:

Our 21st Annual Trust Art Awards has been and gone.

Winners - congratulations!

All popular votes are online and in art rooms. Visitors were treated to a selection of entertainment each day. A total of 1467 visitors came in to see 314 paintings (of which 126 were selected) and 61 sculptures for the Trust Awards. Heron's choice had 41 paintings and 10 sculptures. Chinmay Patel showed 26 works in his exhibition and sold many of them. Comment from the judges: "we found the winning entries are bound together by a set of simple but very important criteria; skill in execution, contemporary aesthetic and an alternative point of view. The winners have all managed to arrest our attention and 'convince' us that they tackle their work from an original perspective and we have rewarded their approach accordingly."



Waitakere Trust Art Award Entry
Mischief maker by Carrol Swan

Te Whanau Toi Art Market

Sat 17 and Sun 18 November, 9.30am - 4pm.

at Te Whanau Toi, 451 West Coast Road, Glen Eden.

Arts, crafts, hangi and food for sale. Maori art displays.

All welcome. FREE entry. Enquiries contact Mary Gilligan, ph 818 2303.

Waitakere College

Rathgar Road, Henderson. Ph 836 0002

November Saturday classes. Sushi Workshop - Variety Breads - Excel Beginners - Yoga - Drawing Class - Video Camera Class - Edible Gardening Class - Create a Dream (Personal Development) Basic Digital Camera and Image Editing.

Enquiries email: JHOPKINS@waitakere-college.school.nz



West Coast Gallery

Old Fire Station, Piha. PO Box 99, Piha. Ph 8128 029

Open Thurs-Sun 11am-5pm.

Email: enquiry@westcoastgallery.co.nz

www.westcoastgallery.co.nz

MASQUERADE BALL: Due to a clash of local events we have had to postpone this exciting event. It will be rescheduled for 2008 and promises to be a fabulous night. Watch this space!

GALLERY ASSISTANT required: December - May 26 weeks 30 hrs per week, some weekend work. Minimum wage. Applicant must be a WINZ beneficiary or in receipt of the Community Services card, or on Working for Families. Learn all the skills of helping to run a community non-profit art gallery. Enquiries: Phone Glenys (Gallery co-ordinator) or send resume about yourself to P.O. Box 99, Piha.

IN YA FACE - A celebration of our people through portrait, print, sculpture and photography. This is a festival (1 March) and summer group show (1 March - 23 March) Entry is open to all Waitakere artists - paint yourself, someone you love, someone you love to hate. Size restriction. Entry open to children and adults. Portrait workshops late January. Enquiries at Gallery.

EXHIBITIONS

FIVE ceramics Until 4 November

Richard Naylor, Lorraine Barnett, Karen Woodgate, Leonie Clapham, Lorraine Armstrong - five Waitakere potters and members of both West Coast Gallery and Titrangi Potters. A rich and varied exhibition.

Richard Naylor
Lorraine Barnett
Leonie Clapham
Lorraine Armstrong
Karen Woodgate

WEST COAST GALLERY presents
FIVE
13 October - 4 November 2007

West Coast Gallery-Old Fire Station-PIHA
Thursday - Sunday 10 am to 5.00 pm
www.westcoastgallery.co.nz 09 812 8029

Five West Auckland potters invite you to the opening of their exhibition of recent work.
2 pm Saturday 13th October

SENSE OF SHAPE - Photography TONY DUNN

10 Nov - 2 December

This show is Tony's way to share the rich diversity of the shapes and forms he sees in and around nature. The show consists of 16 pieces ranging from the stark to the detailed, all concentrating on the sense of shape that surrounds us all.



Hanging On print by Tony Dunn

IN THE NAME OF LOVE - Suzanne Mackenzie

8 Dec - 31 December

Timeless treasures that are washed up on our shores, are lovingly and skilfully recreated into a contemporary piece of artwork.

If you have material for Artlink, or would like to go on our mailing list, please contact **The Community Arts Coordinator, Waitakere City Council,** Private Bag 93 109, Waitakere City. Ph 836 8000 extn 8934.