

# Waitakere City Council Civil Defence Headquarters



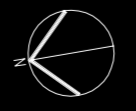
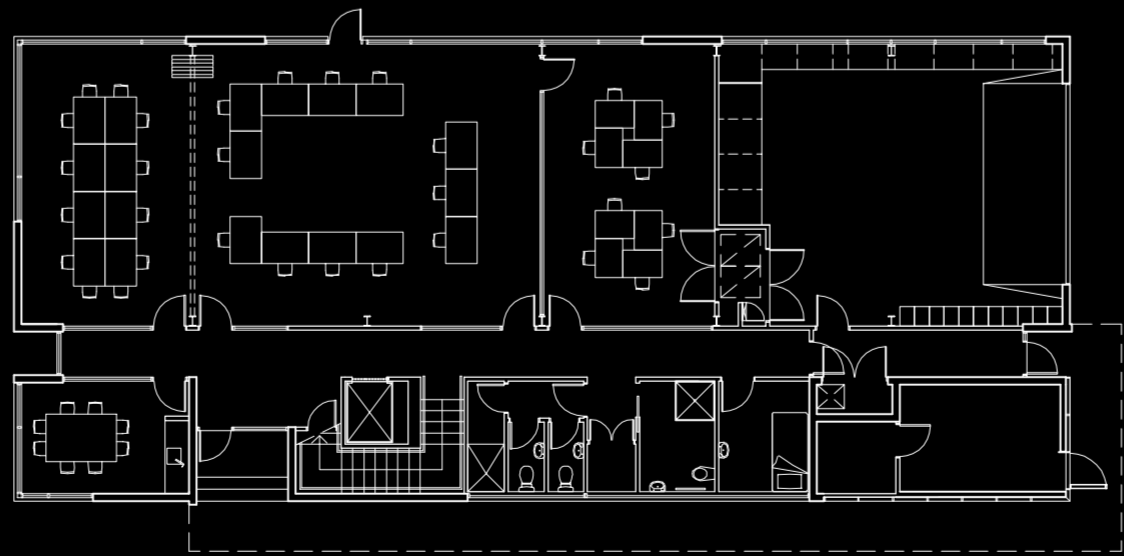
## Site/Context

The new Civil Defence Headquarters for the Waitakere City Council is located on the same residential site in West Auckland that had been occupied by its predecessor – a building that had started life as a fruit packing shed and had been a chapel before Civil Defence took it over – prior to its demolition.

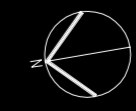
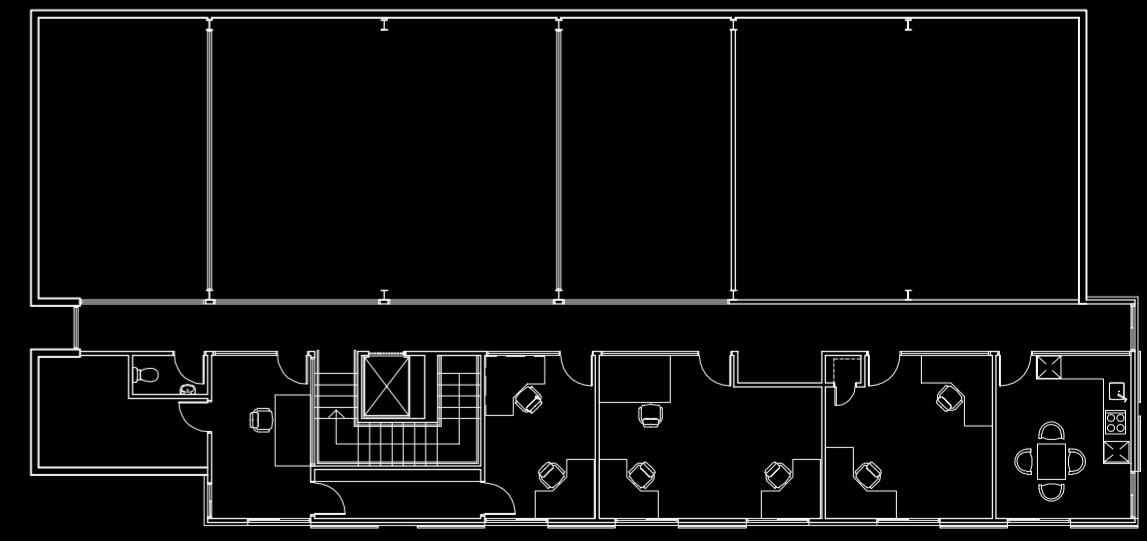
The new building provides greater utilization of the site whilst responding to the residential nature and scale of its surroundings within all planning constraints and optimizing internal spaces to reduce the overall footprint.

The new facility is designed to operate as the Headquarters for the City's Civil Defence organization as well being capable of operating as a regional facility for Greater Auckland if required. On a daily basis the building is occupied by up to 6 full time staff, who operate the facility and facilitate training. In the event of a civil emergency the building becomes an Operations Centre for up to 40 Civil Defence staff including regional police and fire officers.

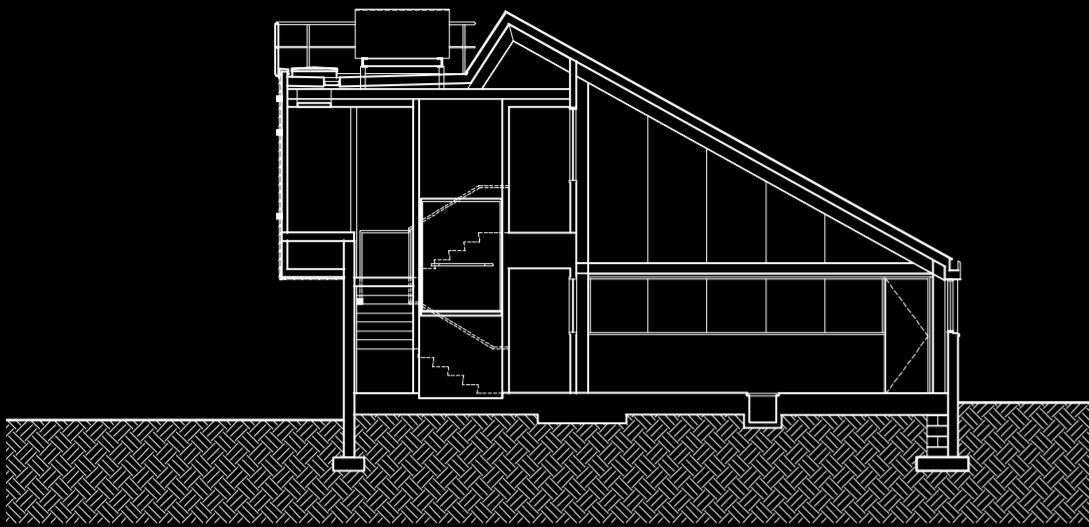
In the event of an emergency the building is required to be self contained for up to 5 days. This has meant the inclusion of water storage, foul water disposal, solar power and diesel generated power. It has also meant the inclusion of such specific devices as air filtering to the air conditioning system, to a sealed internal environment in an event such as a volcanic eruption.



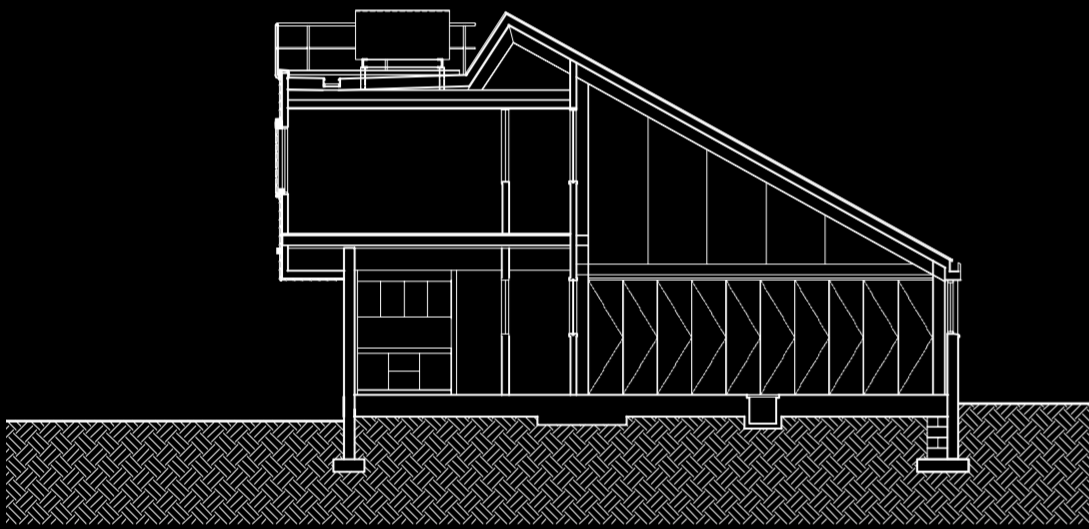
GROUND FLOOR PLAN



LEVEL 1 PLAN



SECTION



SECTION



**Structure / Materials**

The new building is constructed using a simple portal frame structure. This allows a flexible open-plan internal layout to the lower level, that is able to be reconfigured to accommodate various training and operational scenarios.

This also provides the support for the roof structure and supports the cellular offices located on the mezzanine floor, while resisting the loadings subjected to it of earthquake, wind, and ash loading should a regional volcanic eruption eventuate.

Robust materials such as concrete blockwork, ply backed sheet roofing and laminated glazing have been used to mitigate airborne debris in the event of a serve wind event.

Photovoltaic cells power the building and provide the hot water required for the day to day usage of the building. Rain water is collected to an underground holding tank and reused.

A second underground holding tank is connected to the mains water supply, with the daily water usage passing through this, but also ensuring the availability of a supply of potable water in an emergency.

Surface water runoff from car parking area is taken through rain gardens which filter impurities, prior to discharging into the local infrastructure.



- Client:**  
Waitakere City Council
- Contractor:**  
Skyward Construction
- Project Manager:**  
Waitakere City Council
- Civil / Services Engineer:**  
Harris Foster & Beca
- Traffic:**  
Traffic Design Group
- Quantity Surveyor:**  
Rick Levett Bucknall
- Acousitics:**  
Marshall Day
- Planner:**  
Hill Young Cooper
- Photographer:**  
Simon Devitt
- Project Team:**  
Patrick Clifford  
Malcolm Bowes  
Michael Thomson  
Marc Lithgow  
James Craig  
Frank Coleman  
Jeremy Thompson  
Lin Lin