

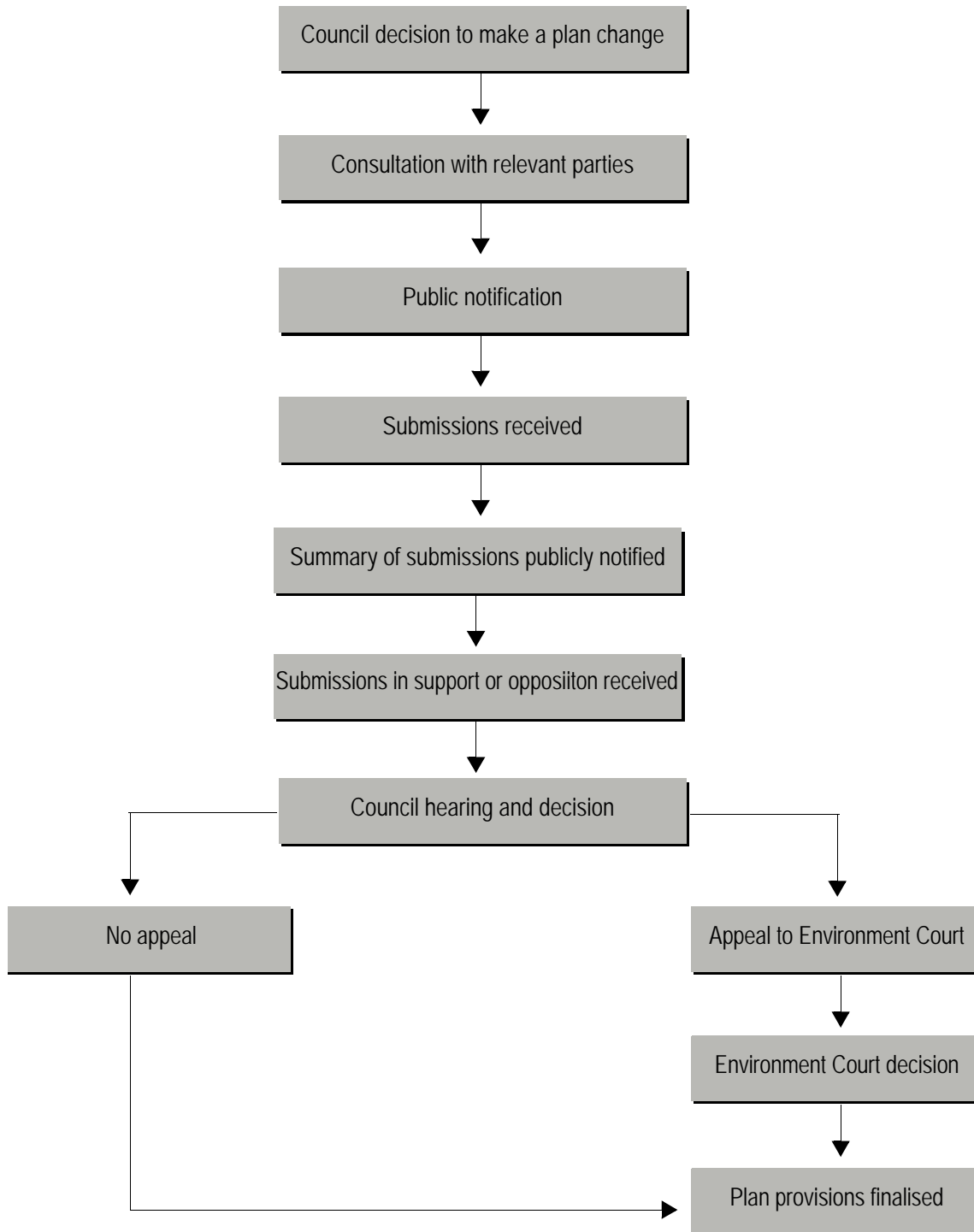
---

## PLAN CHANGES

The *Plan* has a statutory ten year life. In recognition of this, considerable effort has been placed into developing a *Plan* which will be generally appropriate over at least a ten year period. However, it is also the intention of the Council that the *Plan* be a “live” *Plan*, with reaction, where necessary and if

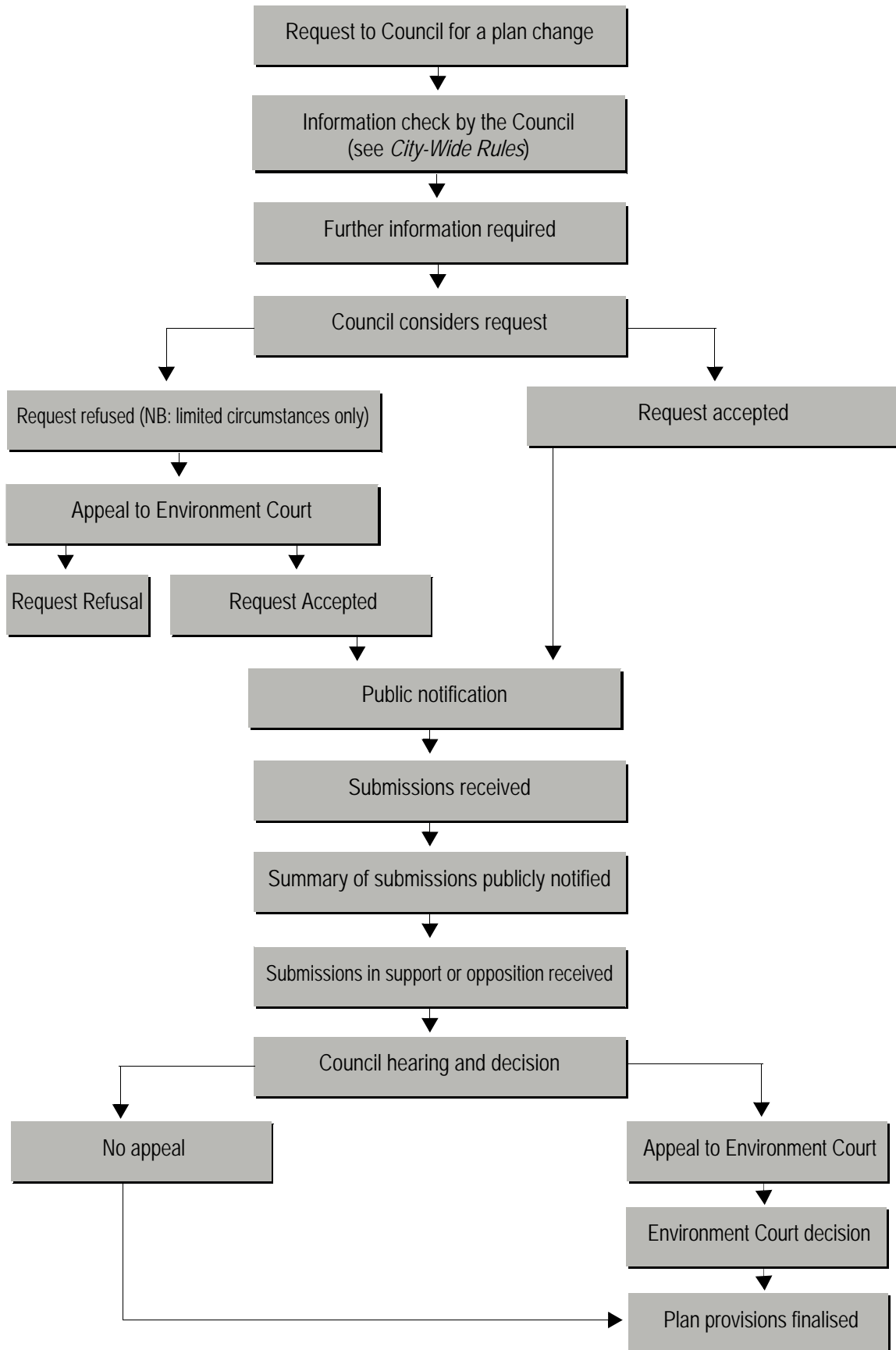
possible, to changes in the *environment* or better methods of dealing with environmental *effects*. Needs for District Plan changes may arise through Council’s own monitoring mechanisms or through approaches or applications for *Plan* Changes made by others (see section 73 of the *Act*).

DIAGRAM 1



*rules introduction*

Diagram 2



rules introduction