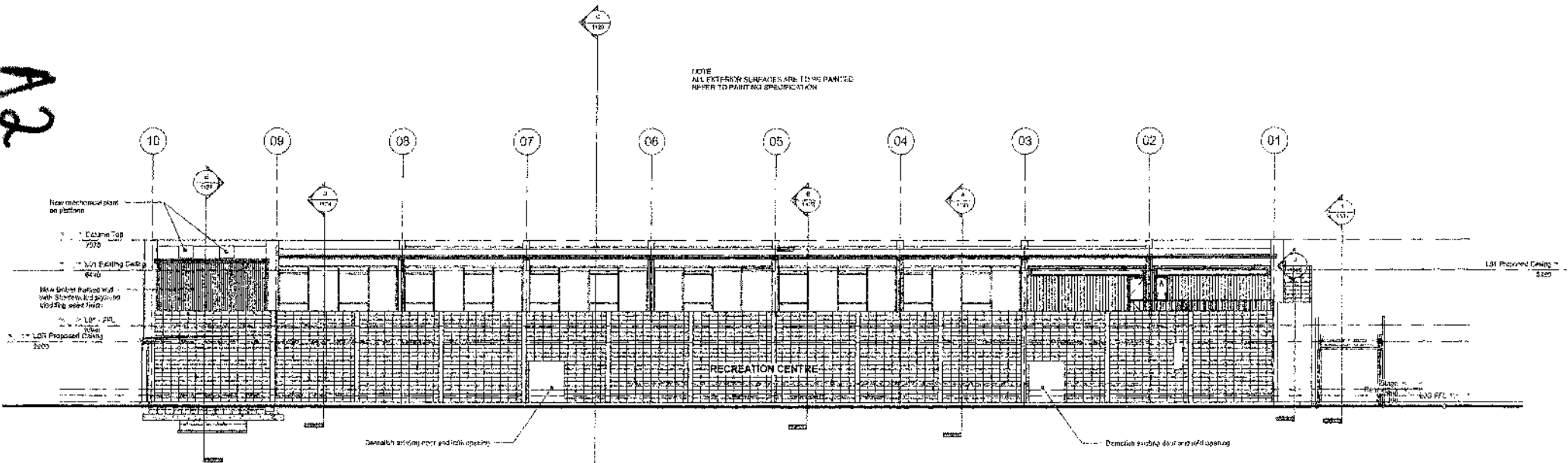


2 ELEVATION - WEST
1:100

A2

NOTE
ALL EXTERIOR SURFACES ARE TO BE PAINTED
REFER TO PAINTING SPECIFICATION



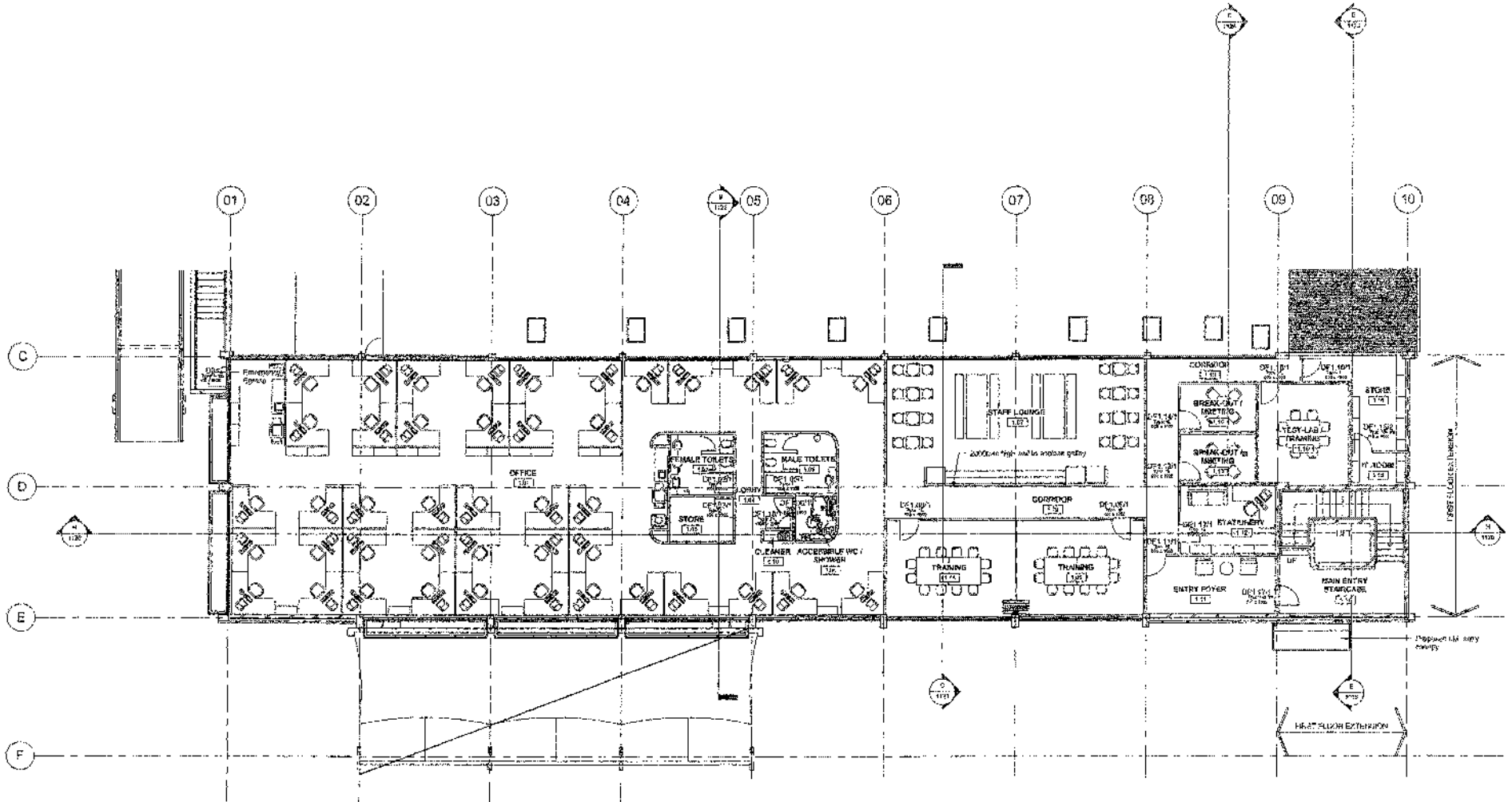
1 ELEVATION - EAST
1:100



This drawing and its contents are the property of Opus International Consultants Limited. Any unauthorised reproduction or reproduction, in full or in part, is forbidden.

Project: Wairakere City Council 20 Alderman Drive, Wairakere, Auckland Henderson Youth Facility Project HENDERSON YOUTH FACILITY		
Sheet Title: HYF - EXTERNAL ELEVATIONS - WEST & EAST		
Project Number: 427076 10	Date: 15/02/2017 1:25:53 p.m.	Drawn/Checked: Scheduling
Scale: 1:100 @ A1	Issue Number: 1/1100/42	Issue Date: 7/1/17
		Sheet No. / Rev: 1129 / R0

AT4



1 101 IM - FIRST FLOOR REFERENCE PLAN
1006 1:100

ANNOTATION LEGEND:

- 3 1000 Detail Number
- 1100 Detail Drawing Number
- 1100 Elevation view Number
- 1100 Plan or Elevation Sheet Number
- 1400 Elevation View Number
- 1400 Elevation View Number

TAG REF NOTES:
 DCH - External Door Number
 DCH - Internal Door Number
 WCH - Window Number
 WCH - Window Number

FLOOR PLAN REF NOTES:
 1. Lines numbers indicated are not included in this sheet.
 2. For structural grid dimensions refer to structural drawings.

SIGNAGE NOTES:
 Specify and detail all signage required by NZBC and the Fire Report for all possible services and other signs.

Revisers / Amendment / Date



This drawing and its contents are the property of Opus International Consultants Limited. Any unauthorised development or reproduction, in full or in part, is prohibited.

Project			
Waitakere City Council			
20 Alderman Drive, Waitakere, Auckland			
Henderson Youth Facility Project			
INFORMATION MANAGEMENT			
Sheet Title			
IM - FIRST FLOOR REFERENCE PLAN			
Project Number	Date	Drawn By	Scale
4.27076.10	15/03/2007 10:28:45 am	ScheJules	
Scale	Drawn By	CSP	Sheet No
1:100 @ A1	1/1100-42	7101	1302
			R0

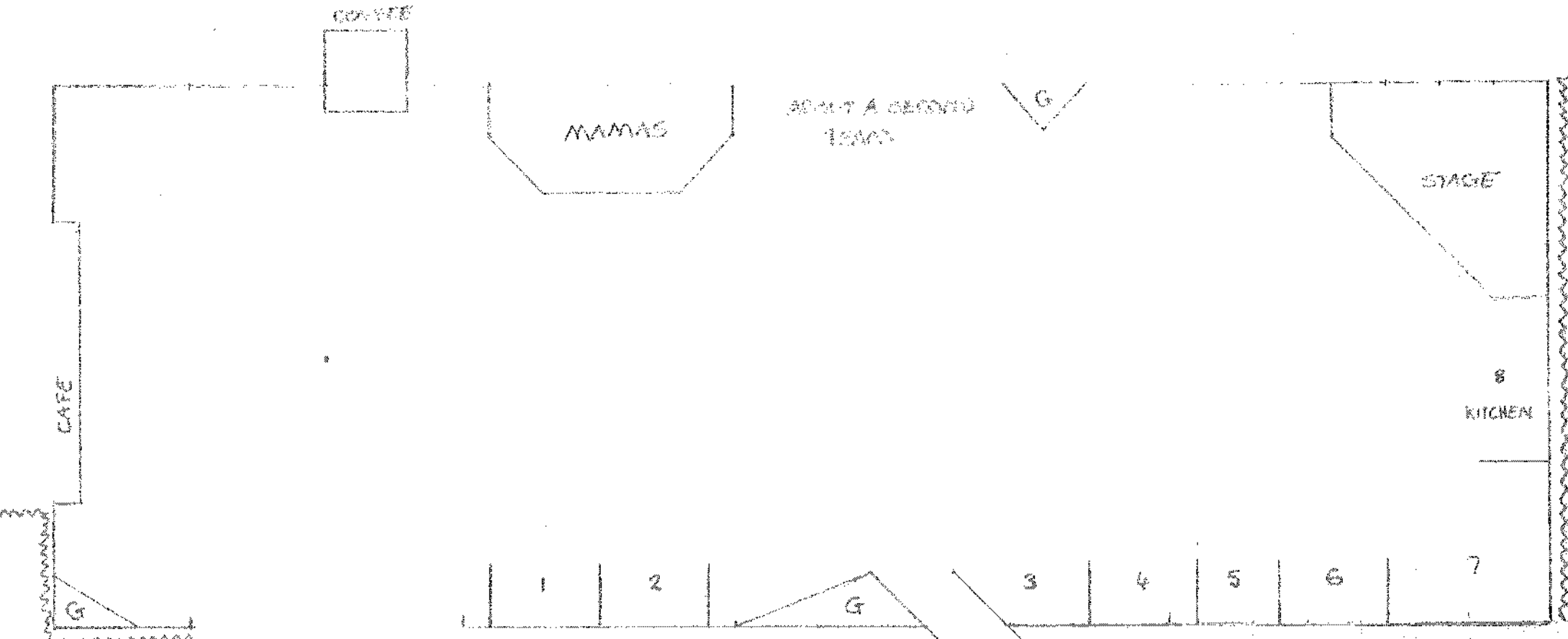
APPENDIX A

Year	Village	Units	Level of Works	Works Summary
2007/ 2008	Kaurilands	22	Medium	<ul style="list-style-type: none"> • Addition of wall to make bedroom • New kitchen • New bathroom with walk in shower • Full redecoration
	Jack Smyth	20	Low	<ul style="list-style-type: none"> • Full redecoration • New toilet & vanity
	Flagstaff	27	Medium	<ul style="list-style-type: none"> • New Kitchen • New Bathroom including walk in shower • Full redecoration
	Kaumatua (Units 23 - 44)	22	Medium	<ul style="list-style-type: none"> • Addition of wall to create bedroom • New Kitchen • New Bathroom including walk in shower
	19 Karaka	14	Medium	<ul style="list-style-type: none"> • New Kitchen • New Bathroom including walk in shower • Full redecoration
2008/2 009	Kaumatua (Units 1 - 22)	22	High	<ul style="list-style-type: none"> • Extension to front, to allow more internal floor space • Addition of wall to create bedroom • New kitchen • New bathroom including walk in shower • Full redecoration
	Westview	42	High	<ul style="list-style-type: none"> • Internal redesign • New Kitchen • Addition of wall to create bedroom • New bathroom including walk in shower • Full redecoration
	Tane St	6	Low	<ul style="list-style-type: none"> • Full redecoration • Modernisation of utilities
	10 Karaka	8	Low	<ul style="list-style-type: none"> • Full redecoration • Modernisation of utilities
2009/2 010	Hutchinson	16	Medium	<ul style="list-style-type: none"> • New bathroom including walk in shower • Full redecoration
	Godley	29	Medium	<ul style="list-style-type: none"> • Full redecoration • Modernisation of utilities
	Harmony	40	Medium	<ul style="list-style-type: none"> • Full redecoration • Modernisation of utilities • Addition of a wall to create bedroom

A6

17331

NETBALL VILLAGE 28/8/07



STALL 8 = 6x2.4

STALLS 1,2,3,4,6 = 4x2.4

STALL 5 = 3x2.4

STALL 7 = 6x6x2.4

ADVERTISING SPACE = 4x4x4

A7