

**MAF Bio security – Pam Project  
 Report on the Ministry of Agriculture and Forestry’s Painted Apple Moth  
 Project  
 For Waitakere City Council  
 March 2003**

1. The latest Aerial Operation was scheduled to be carried out on Monday 10<sup>th</sup> March. Due to unstable weather the spraying operation was delayed until Friday 14<sup>th</sup> approximately 1/3 of the area completed.. Aerial spraying was commenced Monday 17<sup>th</sup> March with the rest of the area being completed. Due to the aerial operation taking a week to be completed the Targeted Helicopter Operation was rescheduled for Monday 24<sup>th</sup> March. The first Target Helicopter operation for Ranui was completed Friday 21<sup>st</sup> March.
2. The next aerial operation is scheduled Monday 31<sup>st</sup> March 2003 weather permitting. Due to the reduction of the aerial zone the total area now covered for this operation is 8140 hectares including the extension to cover the Ranui extension area. All three aircraft will be used again.
3. Trap Catch results for March to date on the male moths are 8. Please remember that we still have this weeks data to collect so these figures are not March totals: Waikumete Cemetery 2 male moths, Ranui 3, Te Atatu 2.
4. We had a new find in Ranui. Due to an intensified trapping grid male moths were trapped outside an area not surveyed.
5. The survey team started to re-survey the Hobsonville, Greenhithe, area this has not been completed due to the find in Ranui. Surveying is currently being done in Ranui.
6. The Movement Control Group has been scaled down due to all known commercial and domestic growers, landscapers and waste contractors having been permitted to move.
7. The first of the sterile male moths were released 19<sup>th</sup> Feb. 500 males were released from two sites, these being Hobsonville and Waikumete Cemetery. This release was very successful and will give us some very good results and statistics as to the male flight pattern. This is scheduled to happen over an 8 week period with the male release numbers being up around 2000 per site per week.

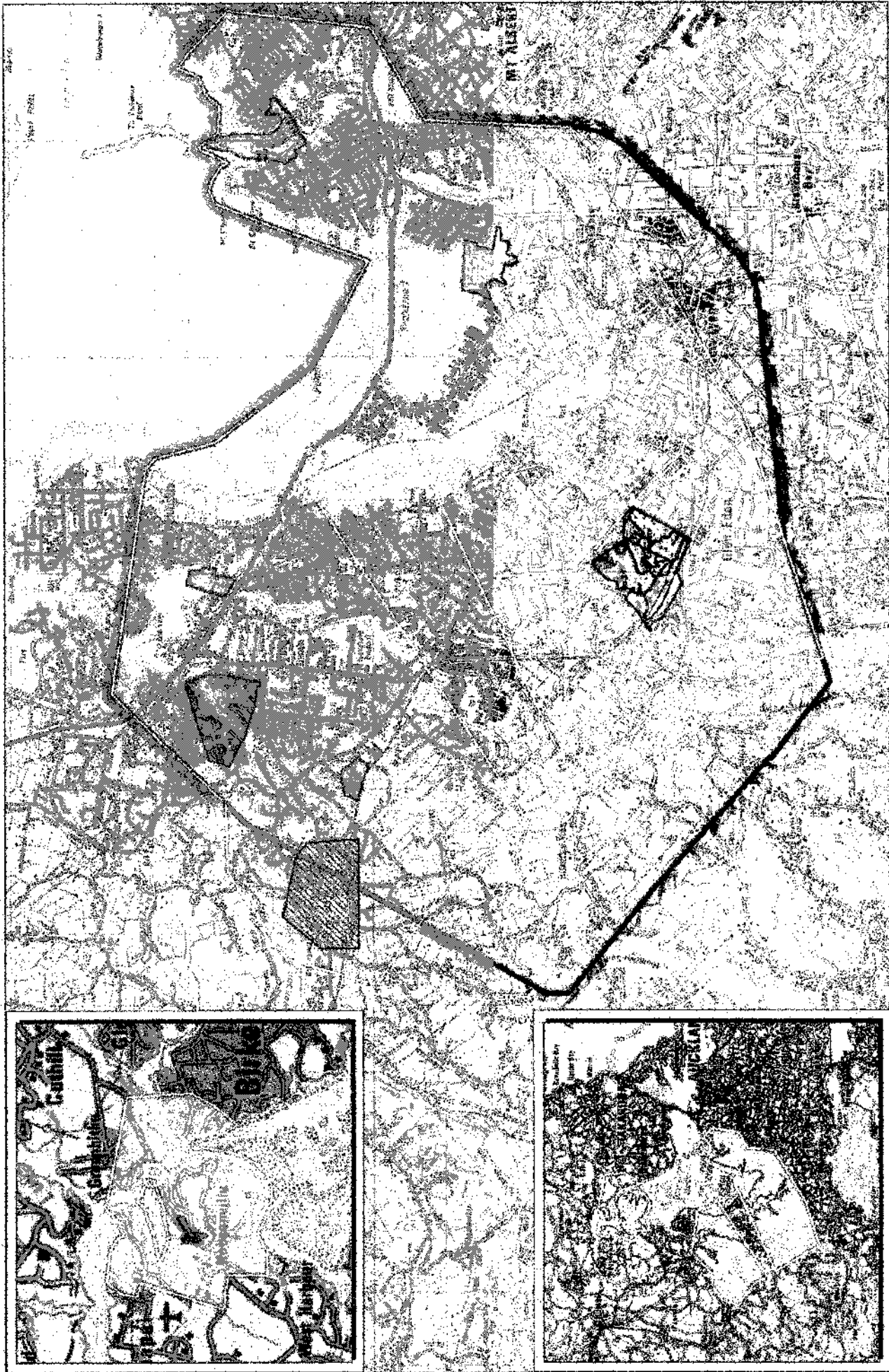
**Summary of major Aerial Operations**

	<b>Date Scheduled</b>	<b>Date Started</b>	<b>Date Finished</b>
Spray 10	14 Oct	23 Oct	23 Oct
Spray 11	11 Nov	13 Nov	15 Nov
Spray 12	2 Dec	2 Dec	3 Dec
Spray 13	18 Dec	20 <sup>th</sup> Dec	21 <sup>st</sup> Dec
Spray 14	7 Jan	7 Jan	15 Jan
Spray 15	28 Jan	30 Jan	31 Jan





Spray 16	16 Feb	16 Feb	17 Feb
Spray 17	10 March	14 March	17 March
Spray 18	31 March		
Spray 19	22 April		

**Summary of Target Helicopter Operation.**

	<b>Date Scheduled</b>	<b>Date Started</b>	<b>Date Finished</b>
Spray 1	14 Jan	15 Jan	16 Jan
Spray 2	21 Jan	Not Done	Unstable Weather
Spray 3	4 Feb	7 Feb	8 Feb
Spray 4	25 Feb	Not Started	Weather
Spray 5	18 March	Rescheduled for 24 March	Ranui Targeted Helicopter operation 21 March
Spray 6	8 April		
Spray 7	29 April		



**Reduced painted apple moth eradication zone**

-  General aerial operation
-  Targeted helicopter operation
-  Targeted helicopter operation - 8 April
-  Previous eradication zone



The sooner we wipe it out the better.

For more information please call our painted apple moth hotline 0800 95 95 96

( March 2003 )

## **Community Liaison Group Members List**

### **Important note:**

If you want to contact one of the members below please  
arrange it through the call centre: **0800 96 96 96**

---

### **Auckland Asthma Society**

Richard Thorogood

---

### **Allergy New Zealand**

Natalie Lloyd

---

### **Flanshaw School**

Maurice Young

---

### **Auckland Regional Chamber of Commerce & Industry**

Michael Barnett

---

### **Employers & Manufacturers Assoc (Northern) Inc**

Alistair Thompson

---

### **Independent scientist**

Dr Peter Maddison

---

### **Health Link**

Meredith Youngson

---

### **Te Kawerau A Maki**

Saul Roberts

---

### **Plunket Society**

Coral Timmins

---

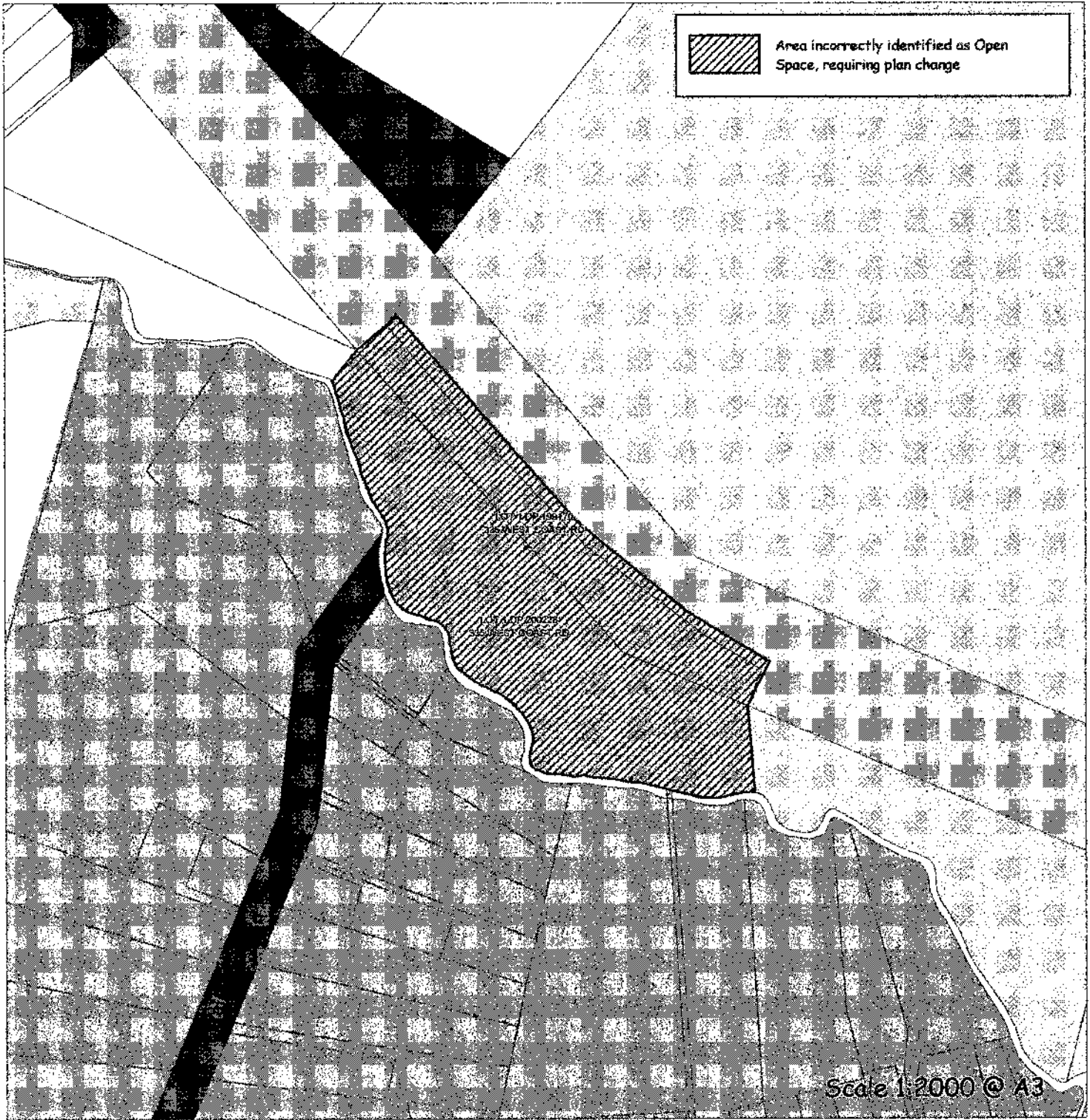
# PLAN CHANGE PROGRAMME – PRIORITIES

	PLAN CHANGE SUBJECT MATTER
1	<b>Open Space Environment</b> rules
2	<b>Medium Density Housing</b> <ul style="list-style-type: none"> <li>➢ MDH as a limited discretionary activity</li> <li>➢ MDH and HDH in Community and Working Environments</li> <li>➢ Provision for mixed use</li> <li>➢ Provision for retirement villages</li> </ul>
3	<b>Summerlands Drive</b> – amendments to 'Roading Hierarchy' map
4	Amendments to <b>Environmentally Damaging Plants</b> appendix
5	Deletion of <b>Special Soils</b> provisions
6	Amendments to <b>Waikumete Cemetery</b> designation / heritage rules
7	<b>Earthworks</b> rules
8	Re-identification of <b>Peoples Park</b> zoning
9	Re-identification of land at <b>1 Glendale Road</b>
10	Clarification of <b>Coastal Edges / Riparian Margins</b> rules
11	Update and review of rules relating to certain <b>heritage items</b>
12	<b>Noise and air discharge</b> rules – review specific issues
13	<b>Vegetation clearance</b> rules – net site area exclusion
14	<b>100% impermeable surfaces</b> in Working & Community Environments
15	Protection of <b>view shafts / Sensitive ridgelines (landscape features)</b>
16	<b>Contaminated sites</b> rules (horticultural soils)
17	<b>Ambrico Place Reserve</b> – Open Space Environment
18	Amendments to <b>Foothills Environment rule 7.2(b)</b>
19	Strengthening <b>urban design considerations in town centres</b>
20	<b>Infrastructure</b> (including broadband and overhead cable issues)
21	Link between <b>policy and rules regarding density</b>
22	<b>Piha development control</b> review
23	<b>Height in Relation to Boundary</b> – shared driveway



# Waitakere City Council Proposed District Plan

## Proposed Alterations to Map Number 25, Human Environments



O:\GIS\Dist\_Plan\Prop\_DP\_Changes\335WestCoastRd\_200303.wor