

# **Council**

**Thursday, 26 April 2007  
Commencing at 5.30 pm**

**REPORT OF THE MAYOR**

**SUPPLEMENT TO THE AGENDA FOR A MEETING OF THE COUNCIL TO BE HELD AT  
WAITAKERE CENTRAL, 6 HENDERSON VALLEY ROAD, HENDERSON, WAITAKERE,  
ON THURSDAY, 26 APRIL 2007, COMMENCING AT 5.30 PM**

---

**PART B - REPORT OF THE MAYOR**

**HOW WE FORM IDENTITY - SOME THOUGHTS**

As well as being a good time for chocolate, Easter is a good time to sit back and reflect. Not so much about religion, well not in my case anyway, but it does make you think about our origins, our history and our identity. I read several articles on this topic over the break and wanted to share my thoughts.

Firstly, there was a very interesting article in the New Zealand Herald about the addictive gene. It said people who don't have the addictive gene won't be addicted to anything. Now, I am not a scientist and would never claim to know the technical ins and outs on this topic; however, I am certain I have not got the addictive gene. I can try anything once and not get addicted, even if I ever had inhaled! And I have passed having no addictive gene to my kids. I've always thought this and it was nice to have confirmation that I've been right all along.

And then I moved on to an article on the web written by Tom Moore about Additive Identity. Moore is talking about identity in Brazil but there are many similarities between his thinking and mine in terms of life in New Zealand. As Moore says, identity can be based on subtraction or addition - what you might call 'subtractive' or 'additive' identity. As every parent knows, a child who uses the word "no" can be very powerful. "No" is a powerful word. Much more powerful than a simple "yes". Even when the child is older, and in adulthood, "no" is still a powerful word, embedded in what you might call an 'either/or' way of viewing the world. Either a person is Maori or Pakeha, heterosexual or homosexual, bad or good, damned or saved, French or Italian. See what I'm getting at? It's a dualistic way of operating which can be useful, but it is also simplistic. Neither does it really reflect reality. People are not simply Maori or Pakeha, because they have complex heritages which may bring together ancestors from many parts of the world. Some eminent French were born in Italy.

'Either/or' thinking and 'subtractive' identity, in which we assert who we are by denying we are like someone else, seem to have connections with our dominant patriarchal ways of constructing the world. Becoming a Muslim (or a Christian) means having one belief system and rejecting all others.

'Additive' identity is something we are becoming more familiar with. It's about creating identity by taking on new aspects without giving up the old and I think we do that very well in New Zealand. We are not inhibited about celebrating our mixed heritage. I am sure some people would be more than happy to say they are the brownest Pakeha or the whitest Maori in town.

And so we have an acceptance of 'additive' identity - the practice of 'both/and' rather than 'either/or'. And that feels like a great place to be. In a society based on 'both/and' the individual need not be a nomad, an atom, defined in isolation, but rather a force expressed through a web of relationships which reinforce each other.

For example, a musician may be a performer and a composer and may work in classical music, early music, jazz, samba; he or she may be a writer and a poet as well. Identity is not based on "no, I don't do that," "that's not what I am about" but "yes, I like that, I do that too". I can be a councillor and I also can be a printer or an undertaker. This is what I've been saying since my memorable experience with Richard Florida and his fantastic book on how cities and communities are created and cheered on, *The Rise of the Creative Class*. Waitakere I think has this and it's about recognising and being recognised as an ethnic group with ease, i.e. a Dutchie or a Dali. And liked and appreciated and respected and part of the community.



Bryan Mogridge and I often talk about this being the kind of city that has the beginning of real cultural diversity, not marginalised or ghettoised. We're closer to the soil. The climate is wilder. And I sure get cheered up when I see things like this - in 1860 when the Surveyor General and great painter Charles Heaphy came out west and said: "This country is densely wooded with a broken surface but very rich soil. From its very hilly character, and from its being in the hands of the Natives, it has remained, until lately, without attracting attention. Fair lines for roads are, however, now being found into it, and the district will probably be soon occupied as the site of a select settlement. It is a rough place, but its soil will grow anything, and it lies within a sturdy day's walk of Auckland".

Here in Waitakere we had pioneers but they weren't just pioneers. They were artists, poets, winemakers. Yes, we've had marginalised people but those people have also been creative and innovative. And we've had a long term real partnership between Maori and Pakeha. Waitakere's people are very firmly committed to 'both/and' and I think that's just great.

### **CRIME IN WAITAKERE**

However, all is not rosy in this City that is Waitakere. Our crime statistics have increased significantly and quite frankly they make horrendous reading. Kidnapping/abduction is up 109 percent, robbery up 57 percent, sexual attacks 45 percent, grievous assaults 32 percent, serious assaults 11 percent and burglary 13 percent. The figures are completely unacceptable in my mind and I'm sure you will agree. Overall there is a five percent increase in total crime. Some of the statistics can be put down to a higher resolution rate and increased reporting, but taking that into consideration doesn't improve the picture one bit.

At the same time the police were preparing to release the new statistics, Henderson was suffering a mini crime wave, with three violent incidents almost on top of each other. It was a very worrying time and so my scheduled meeting with new District Police Commander, Superintendent Viv Rickard was timely. To his credit Superintendent Rickard took my concerns and indeed my very forceful dialogue with him admirably. I felt like I was the Mayor of Gotham City, telling Batman I wanted the city cleaned up. In fact I think he thought I was also demanding Wonder Woman, Spiderman and Superman. Well to be honest, I do expect them. Someone has to play these roles. In our early lives we believe someone will clean up the City and we've kept on believing it. I'm pleased I do, because at one presentation I was at given by police in Manukau I was very disappointed. The young constable simply related Manukau with overseas and then added the glum news he felt the situation would get worse before it got better. He used Salt Lake City, with more than 40,000 youth gang members, as an example. I agree this is a serious and huge problem but when judges let All Blacks off for a 'first time slap' - to which all of New Zealand shouted "yeah right" - and the fine for graffiti is a maximum of \$200, goodwill and good deeds are somewhat up against it.

I also appealed to Superintendent Rickard to concentrate on the Henderson Town Centre. The letter I received in response was heartening. Superintendent Rickard and the New Zealand Police accepted our challenge in relation to their role in the Henderson community and immediately implemented high profile enforcement in the area. Superintendent Rickard said that was a short term tactic to "take the streets back". I quote: "We want Waitakere to be one of the safest cities in the country and I expect my staff to be highly visible, preventing crime and dealing with those individuals that have prevalence towards crime. My staff will be in risk locations at the appropriate time."

In the long term, Superintendent Rickard has assured me that he and his team are going to look at the problems and how to address them, along with Council and other community partners. As I say, it was a heartening letter and I do believe Rickard and his team will improve the situation, although, of course, it will take time.



Since my meeting with the superintendent, we have made a presentation about the situation to a number of organisations, including the Henderson Business Association. We've got a long way to go but I think we've made a good start and I think Superintendent Rickard and his team are to be congratulated on their quick action. However, in saying that, I don't intend to ease up the pressure. This situation cannot continue and we simply must come up with the answers. We must think with our 'additive identity' selves and say "yes, we can do that too". And we can.

*M1-M30* I was heartened to hear, when I was chairing Local Government New Zealand's Metro Sector Meeting last week, an extraordinary presentation on safe communities which covered off much of what I have been saying to the superintendent. At the end of the meeting, and I enclose the presentation for you to read attached at pages M1-M30, we believed that if we do put our mind and energy and will to it, we can start looking at a five-year, 50 percent reduction in violence.

One of the things that needs to be addressed is extra funding and resources to our groups in the City, but we also need the government departments and agencies to spend more time talking to each other. I think we all think this doesn't happen, as families and children are beaten and damaged while one agency knew this and the other agency didn't. And as I've always believed, when a horrific murder takes place, 20 agencies descend on the house and the family when one good agency could probably have prevented the catastrophe and horror in the first place. After the television and media have left and we've gone on to the next earthquake or road carnage, nothing changes. Isn't this familiar stuff and haven't we been listening to and seeing it for years?

#### **TASKFORCE AGAINST FAMILY VIOLENCE**

One of the things I am doing is setting up a Mayoral Taskforce Against Family Violence. In December last year we were very proud to accept the World Health Organisation's Safe City re-accreditation, but the reality is we are not capable or determined enough to keep our children and families safe. Family violence continues on a daily basis with all too often fatal consequences and the time has come for action. I think Waitakere can take the lead. We were New Zealand's first Eco City, so I see no reason why we can't be the first city to put a stop to family violence.

Planning is still in the very early stages and much of this is about building on the already existing initiatives and pulling them altogether and of course we need to consult widely with our community, but I know we could do better and I think the taskforce is a good place to start. I am also planning to talk to the government about this initiative, with a view to developing a community response as a national pilot and to seek funding. We can no longer sit around and shake our heads at yet another family violence incident or murder and need to find some resources as well as central government. I have had enough. It has to stop and we have to be part of the solution and we have to help fund it. I will keep you informed of progress on the taskforce. Sue Bidrose has been a fantastic support as has Fiona in my office, so if you have any ideas please talk to one of these wonderful women.

#### **ORATIA BEAUTY**

I wrote a story for the Sunday Star Times to help publicise the Alex Sunde exhibition at Corbans which I am sure you all saw; however, I wanted to publish it here with a few additions.

Shaw Road, a windy, leafy, orchard road that weaves its way from West Coast Road up the Oratia Valley into the Waitakere Ranges, is flanked by letterboxes reflecting the West's Yugoslav heritage and the large presence of the Sunde family. For more than 100 years, on each side of the road, orchards and vineyards flourished and one of their sons, Alex, just happened to be one of the finest painters I think this country ever produced.

Alex, trained at Elam in the 1930s and who later worked briefly in the advertising world, died aged 75 in 1999. He was the son of immigrants Phillip and Nede who had settled in Oratia in the early 1900s.



Chris Strewe remembers Alex in the next paragraph. Chris lived on Scenic Drive in a house on the Gordon's property as a member of one of the first eco families of Waitakere. Odo the matriarch was an environmentalist and landscape gardener who had fled Germany in the 1930s. Jocelyn, his widow still lives at Karekare.

According to Chris, Alex had beautiful olive skin and was very tanned on his face, neck and arms. Yet he was white, iridescent white, when he took a shirt off after coming out of the orchard. "He was softly spoken and greeted us children warmly, never failing to choose the best peaches and apples that happened to be rolling along the padded tables in the sorting shed. I could tell he liked Odo; my father was also partial to him. They chatted quietly, almost conspiratorially. Alex's large extended family kept working. They also liked my father and us but with Alex there was a special bond. Downstairs, in the monstrous wine cellar, among the enormous wooden barrels, they talked about the Chinese and the Soviets, as Alex siphoned off a flagon of sherry which Odo never paid for."

Chris recalls Alex as being soft and sensitive but he always attended the raucous bohemian parties Chris' parents threw. "He'd stand back to the wall with a glass of the sweet white wine they made, quiet but ready to engage politely, intently, with anyone who could find the time. He was never loud. His head was small for his broad shoulders and his eyes were large and penetrating. Sad eyes that come from a different place."

As a painter, Alex's style was eclectic - flowing sinuous brush strokes with heavily laden colour, boldly delivered line drawings and lightly washed water colours, all translated into a variety of subject areas from self portraits, to landscapes, to abstract forms. While he created powerful self portraits and those of the orchard workers - young men who would be employed by all the orchardists at picking time, he also took in a wider world of subjects and techniques and was heavily influenced by wide reading and his admiration of masters Picasso, Miro and Georges Roualt.

Alex, says his lifelong friend John Yelash, was one of the kindest, gentlest men of the tough Yugoslav stock who had broken the Oratia clay into orchards and vineyards and continued to work it all their lives from dawn to dusk. He adds: "Alex was also chronically lonely and his painting was his refuge from the back-breaking orchard work and the ongoing care of his parents - his father living until he was 101 and his mother until she was 95".

Alex's packing shed studio became a visiting place for art luminaries like Keith Patterson and Michael Illingworth, Don Terrace and Annette Isbey, who saw in Alex's paintings an enormous, rich talent and they encouraged him to exhibit, although the reclusive and modest Alex always found a reason not to.

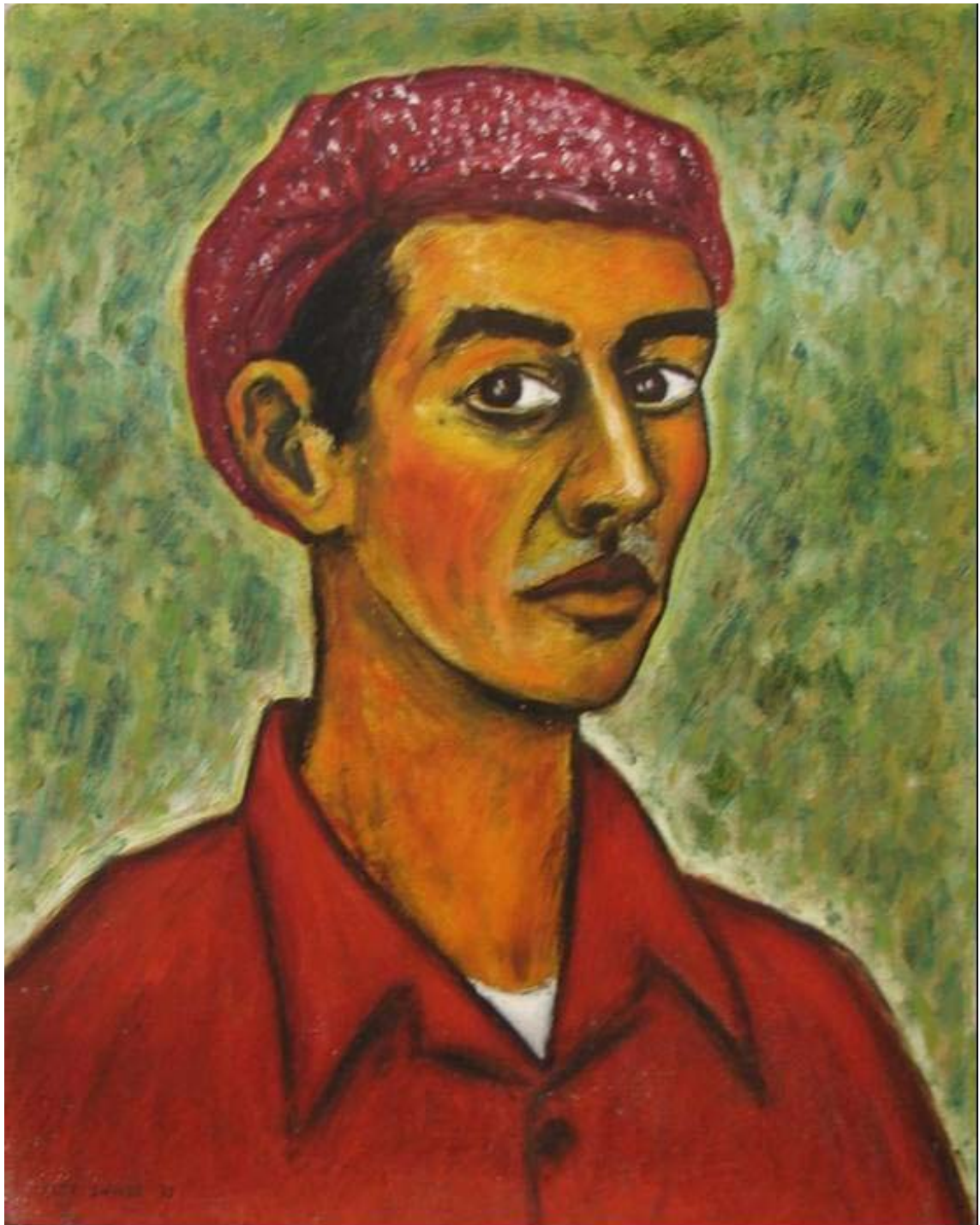
A few weeks after Alex died, I was invited by his surviving brother, Vic, and other family members to come and look through his folders. I found a treasure trove of oils, watercolours, sketches and cartoons - a glorious tribute to the Oratia Yugoslav heritage and one of the most amazing collections of a New Zealand painter. The work reflects the deep focus on the Yugoslav homeland to which Alex's brother and uncles returned to help rebuild following the war.

Through his life, Alex continued to work privately for local vineries, designing labels and packaging, but his true passion remained the faces and characters of his local community.

In those days the Oratia orchards were alive with activity as the seasons in the valley moved from spring to summer. Music was a huge part of the culture and Alex and his brothers all played the tambraiza, banjos and mandolins. But there was always Alex's art, and thankfully the folios and the paintings he gifted to family and friends have now been curated to give an amazingly rich look into the lives of the Oratia settlers. But more than that, here is a New Zealand painter of real worth, someone who had a stunning technical brilliance, combined with a sense of colour and haunting imagery.



The exhibition runs until 20 May 2007 and I am sure each and every one of you will go and see and experience it; however, as a taste I have inserted one of Alex's paintings here.





## MILESTONES

### **Don Selwyn - Kua hinga te totara nui o te wao nui a tane!**

Long-term Massey resident and inspiring actor Don Selwyn died aged 71 on Friday, 13 April 2007, and a contingent from Waitakere attended the tangi on Monday, 16 April 2007. An inspirational and dynamic film-sector leader, I knew Don very well for many decades and his contribution to the industry in this country was outstanding. His acting credits include *Sleeping Dogs*, *Mortimer's Patch*, *Came a Hot Friday* and *Marlin Bay*. He was the casting director for *Once Were Warriors*, *What Becomes of the Broken-Hearted?*, *Broken English*, *Jubilee* and *Crooked Earth*. He produced the Maori *Merchant of Venice* and *The Feathers of Peace*. It was all brilliant work and Don was also heavily involved in mentoring and coaching many young Maori actors, including Temuera Morrison and Lawrence Makoare.

I served on the New Zealand Film Commission with Don and he undoubtedly delivered some of this country's most memorable film and television projects. He was a mentor and inspiration for a generation of young Maori performers and he took real pride in seeing young Maori take their culture onto the stage and screen. His passing was a great sadness and he will be sorely missed.

Don was a wonderful character actor - in fact one of this country's finest. In recent years he performed with young musicians and performers at the Going West Literary Festival and at other local venues and events. He was central to this City's Maori Creative Strategy, which is still being developed, and I am truly sad he will not see that project through to the end. Not only Maori, but New Zealand as a whole has lost a great man. Just weeks before his death after a long illness, Don accepted an Arts Foundation Icon Award for his work as an actor, film maker, producer, casting director and educator, and it is to the foundation's credit it took the unusual step of presenting the medallion before the honours' ceremony later this year. A permanent online memorial to Don Selwyn has been set up and if you would like to add your condolences and record any anecdotes or messages go to [www.remembering.co.nz](http://www.remembering.co.nz).

### **David Peter Clews (1958 – 2007)**

Our hearts went out to our friend and colleague Councillor Janet Clews and her husband Ernie when we heard their beloved son David had died. Thank you to all my colleagues who went to Hamilton for the funeral on 26 March 2007. David's funeral was the day after the entire nation saw his outstanding involvement in the separation of conjoined twins at Waikato Hospital in 2004 through TVNZ's 'Sunday' programme. David had performed a crucial part of the 22-hour operation and the twins' parents, Melissa and Callan, said there were no words they could find great enough to describe his contribution to their family. They dedicated the Sunday item to David and attended his funeral.

It is nothing short of tragedy that David's life had to end so prematurely; he was just 48. Our sympathies are with his parents and the rest of the family. However, few people make such a huge success of their lives as David did and it is a shame he did not get to personally 'pick up' his New Zealand Order of Merit, an appointment made in the New Year's Honours list. Janet, we are all extremely proud and privileged to have known David through you and words cannot express our sorrow in terms of your sadness.

### **John (Jack) de Vere**

*M31-M33* Shortly after her son's death, Councillor Clews sadly lost her former Glen Eden Borough Council Deputy Mayor, Jack de Vere. Jack chaired the suburb's town planning committee for a number of years before the body amalgamated with others to become part of Waitemata and then Waitakere. Jack was a life member of the deaf society and was closely involved with the Glen Eden Citizens' Advice Bureau. He was also a Justice of the Peace in Auckland and Henderson for more than 20 years and received a Queen's Service Medal for public service in 2003. More recently Jack was an integral member of the judging panel for the Waitakere Infratil Community Awards and he will be sadly missed at our next session. Jack and his late wife Ann are survived by three children and seven grandchildren. I have attached Councillor Clews' eulogy at pages M31-M33.



### **Bill Buchanan**

The City unfortunately also lost one of its sons with the death of New Lynn Community Board Member Bill Buchanan on 16 April 2007. Bill was also a long-term member of the Portage Licensing Trust. An active member of the Titirangi RSA, Bill was a keen bowler who made wine as a hobby and who had a huge commitment to his local community. Bill worked at MOTAT as a volunteer for years in its promotion and marketing. An advertising man like me in a previous life, Bill was responsible for the launch of McDonalds food chain in New Zealand. A member of the Go Waitakere ticket, Bill was also nearly elected to the Auckland Regional Council. A creative individual, Bill was also ahead of his time in some of his thinking on social issues. He is a loss to the community and our thoughts are with Noeline, Sandra, Karen and Mark.

### **Henry Gillam**

It was also with sadness we heard the news of Henry Gillam's passing last month aged 93, at Edmonton Meadows Rest home. A career soldier with the Royal Artillery (British Army), Henry joined the Territorial Kent and Sussex Heavy Regiment in 1931 and was posted to the Norfolk coast in 1940 and then in 1943 to the 67<sup>th</sup> Medium Regiment in preparation for the second front.

Henry took part in the Normandy invasion and was wounded at the Battle for Caen on 13 July 1944. After evacuation to hospital in Britain, he returned to the front line in time for the crossing of the Rhine. From 1947 to 1963 he was an instructor in driving and maintenance on tanks and self-propelled guns at the Royal Artillery Wing of the Royal Armoured Corps School at Bovington Camp in Dorset.

On retirement from the army with the rank of Battery Sergeant Major, Henry emigrated with his family to New Zealand eventually taking up residence in Waitakere. Before final retirement he resumed his original trade as a grocer in a shop on the corner of Great North and Rosebank Roads in Avondale. As a member of the Normandy Veterans' Association, he became Parade Master and Life member and was an enthusiastic member of Te Atatu Male Voice Choir. A foundation member and Patron of Edmonton Senior Citizens, Henry was also a member of the Henderson and Te Atatu RSAs. As a Member of the Anglican Church of St Paul Te Atatu, he was in the pastoral group that regularly entertained the residents, singing at St Margaret's nursing home on the Te Atatu Peninsula.

### **Mayor Iccho Ito**

I am almost at a loss about what to say in terms of the killing of Nagasaki's Mayor Iccho Ito on Tuesday, 17 April 2007. Mayor Ito was shot two to three times in the back while campaigning for re-election and despite surgery, died about four hours later. Mayor Ito was born a month after Nagasaki was destroyed by a nuclear bomb in 1945 and was the vice president of Mayors for Peace, to which I belong. He will be tragically missed by the people of Nagasaki, the people of Japan and indeed all of those around the world who share his vision of a nuclear weapons-free world.

I met Mayor Ito in New York in 2004 as part of a delegation I was involved in that was asking the United Nations to try and stop the proliferation of nuclear weapons. We shared a bus ride from downtown New York to the site of the World Trade Centre, then still being cleared of the rubble. Both Ito and his Japanese colleague and Mayor of Hiroshima, Tadatoshi Akiba, put relics from their respective bombings on the memorabilia wall. I recall them pinning glasses of victims that had been frozen in time by the blast of the bombs. It was a very moving experience, as we were being hosted by family and friends of those who had perished in the 9/11 tragedy. Mayors Ito and Akiba at that time were regarded as two of the world's great active campaigners against the proliferation of nuclear weapons. Mayor Ito's loss to the anti-nuclear cause is a great tragedy and he was an outstanding mayor for his city. I have sent our condolences to Nagasaki and plan to visit the city to pay tribute to Mayor Ito when I am in Japan in June 2007.



## **ROGER DONALDSON 'ALL DOGS SHOT' EXHIBITION**

*M34-M35* When I was in Los Angeles last year, I had the honour and privilege to help my life-long friend Roger choose the images for this exhibition, which runs until 10 June 2007. This is the first time Roger has exhibited his photography and Lopdell House is indeed indebted to his generous offer to mount and bring his work to Waitakere and New Zealand. Roger was a photographer long before he became a bankable Hollywood writer and director, and his passion for the craft is very clearly evident in the exhibition prints. What an eye he has. The prints are simply breathtaking and I attach, at pages M34-M35, the exhibition notes. Much of Roger's time was spent living and filming out west and the exhibition is a rare chance to see some gems from the 60s and 70s.

## **TARRA DEFEAT**

The Environment Court's dismissal of the Te Atatu Residents' and Ratepayers' Association appeal against our decision to create a marae at Harbourview/Orangihina was a great decision for Waitakere and the Auckland region and the news certainly cheered me up. The decision by Judge C J Thompson examined each of the grounds of appeal offered by TARRA before dismissing all of them. This will go down in the history of this City as an action that should never have been taken, even though I believe in the courts, democracy and a fair hearing. The attitude of a small group of people bordered on the boorish and that's always disappointing.

Harbourview is a huge area and it was only right and appropriate to take one very small part of it and set it aside for a marae that is for all people and the future. It's never been designated for Maori alone, but for future generations. The generosity of Maori people has been astonishing in their encompassing vision and they have been continually denigrated and marginalised by a few.

The appeal set progress back by over a year, but now the judge has thrown the appeal out we can get things back on track. The decision is a victory for the people of Waitakere, the Auckland region and New Zealand and a predictable and just defeat for TARRA. Maybe now the organisation's 'we knock anything this council does' members will rethink their ways but I guess that's probably not going to happen. Hooray for justice.

## **WAITAKERE ARTS LAUREATES**

A very successful Laureate forum was held on Saturday, 14 April 2007 at the Falls Hotel and thank you to my Council colleagues, Councillors Clow, Chan and Lawley for attending part of the day. My thanks also to Brian Corban, who chaired the event, and facilitator Candis Craven. Ten of our 12 Laureates attended the event, which was held to discuss next steps in the Laureates' programme, and boy did they ever contribute. It was a huge privilege to be in the room with so many great minds and the programme has a wonderful future. A report will be compiled about the forum and we will then move on to the selection of this year's Laureates, who once again will be announced at a special dinner function in the chamber. I will keep you abreast of progress.

## **KAREKARE GALS BRING BACK THE GOLD**

I'd like to firstly acknowledge Brian Heron, whose generosity has enabled this marvellous women's boat crew to bring back double gold from the New Zealand Surf Lifesaving Championships. Simone Johnson, Daile Lambert, Lorraine Brake, Nina Reid and sweep Lance Hammond won the short and long course boat titles for the second year. Gisborne's Midway Beach turned on the surf for the short course racing with a clean 1.5 - 2m wave and the team pulled off a technically near-perfect race in the six-boat final. Conditions were completely different for the long course the following day, with a nasty chop on the water; however, the course suited the team and in the final it held 1 - 1.5 boat lengths for most of the race.

Congratulations team!



## BUSINESS FORUM

More than 100 people from Waitakere, Rodney and North Shore attended the 2007 North West business forum last month and, as a result of the discussions, the plan is to establish a North West business council so we can present a united North West voice on business issues. I think that's a fantastic idea and I am sure the initiative will be well received. We need a united voice to ensure our future, especially around the availability of business land, transport and of course Whenuapai.

*M36-M39* With nearly 10 percent of the national GDP generated in the north-west and an expected population of 700,000 by 2040, it's critical the areas' issues are recognised at the regional level and government policies and initiatives are focused on dealing with Auckland as a region. I am sure you will join with me in supporting this initiative and my thanks to Fraser Henderson and his team who organised the event. It was well attended, the presentations were of a high standard and I think everyone felt very positive about the future. It was particularly pleasing that the Minister for Economic Development, Trevor Mallard, officially opened the forum and I attach his speech at pages M36-M39.

## KAPA HAKA

What a night it was when we paid tribute to the top place getters of the Matatini National Kapa Haka Competition, held in February 2007 in Palmerston North. The Council Chamber was filled with the sound of Kapa Haka and it was especially pleasing to be able to honour Ngapo (Bub) and Pimia (Nen) Wehi, who have spent their lives striving for excellence in Maori performing arts and are famous throughout the country in a world we are not often aware of. Every Maori in New Zealand knows them and in Waitakere they are considered with huge respect. The couple has lived in Waitakere since the late 70s, when they established the now nationally-renowned and award-winning group, Te Waka Huia. Their track record at the Aotearoa Performing Arts Festival is a testament to their impeccable standards and they are the only tutors in the country to have ever won at the festival five times. At the recent Te Matatini, both were honoured by Associate Minister of Arts, Culture and Heritage, the Hon. Judith Tizard, for their contribution to Maori performing arts. And so, as I say, it was truly an honour to be in this couple's company and feel the strength of their expertise and their mana.

We also paid a fitting tribute to the other winners - Paora Sharples - top male leader, Maria and Te Hira Paenga - tutors of Nga Tumanako and Auckland Girls' Grammar, Te Wharekura ō Hoani Waititi tutored by Hemi, and Ngahiriwa Taitin (senior members of Te Roopu Manutaki), Te Kotuku ki Panuku, tutored by Maurits Kelderman (another senior member of Te Roopu Manutaki) and the many schools tutored by Waka Huia members throughout Auckland.



I and others will be recommending to the selectors for our Walkway of Fame in the Civic Centre they consider Ngapo and Pimia for induction in the next round, and to that end, I took the opportunity while they were in the Council buildings to take their handprints on the computer, which I have passed on to the team here. I am sure you will all agree they are very worthy recipients. Quite frankly I think they are living treasures, taonga, and their huge contribution to this City should be honoured - in this way as soon as possible.

## **WALKWAY OF FAME**

And speaking of the walkway, it was a pleasure to be part of the induction of the late Sir Tom Clarke, Dame Sian Elias and Graeme Douglas. Sir Tom was the former head of Crown Lynn and it was wonderful to see his widow Trish (Lady Clarke), and so many members of his family at the ceremony on 4 April 2007. Unfortunately Chief Justice Dame Sian Elias couldn't attend; however, she sent her respects, and as always it was wonderful to hear a few words from Graeme Douglas, managing director of Douglas Pharmaceuticals and a long time friend of this City. It was good to see so many previous inductees at this event - Assid Corban, June Mariu, Roy Williams and Beatrice Faumuina. And of course it was especially good to see Barry Shaw in attendance too. It was Barry who first proposed a Walkway of Fame (as a Henderson Community Board Member) to promote community pride and to provide an interesting public feature in the Town Centre. The walkway certainly does that and I look forward to seeing it grow in the years to come.

## **TAKUU**

Thanks to the wonders of modern technology, many of us have been being kept up to date with Briar March's documentary on the sinking island of Takuu. Through a blog site we've had a fascinating insight into life on the island and it really has been interesting. Briar, now home and working at TVNZ, is a fine example of a wonderful young talented westie doing great things and it is a pleasure to make mention of her here as a big cheer on to her and her wonderful work. I am very much looking forward to seeing the documentary when it's finished.

## **ECO CITY**

While caring for the environment has become almost mainstream these days, Waitakere, the original eco city, is still at the leading edge with a variety of initiatives, including the promotion of the use of cloth instead of disposable nappies. As part of the Council's vision for zero waste by 2020, it's important parents and caregivers understand just what using plastic nappies means, and thanks to our programme and the hard work of Rebecca Hilton, the message is certainly getting out there. For each household with one baby using disposable nappies, disposables will make up about 50 percent of the household waste. And whoever came up with the name 'disposables' should be shot - most disposables take at least three generations (that's around 100 years) to break down in a landfill.

Rebecca has been involved in the programme since its outset and has been behind our cloth nappies hire kit, the education centre in Te Atatu Peninsula, the celebration of the first day of Real Nappy Week (pictured below) and the competition to design a fashionable cloth nappy. I have inserted some photos of the day held in the Council Chambers, because the atmosphere really did buzz with informed enthusiasm. Entries to the competition close next month and I am looking forward to seeing what people have come up with. I am sure you will join with me in congratulating Rebecca on the programme to date and to thank her for her invaluable contribution to this City and its all important environment.



## PINESONG

On 12 April, Metlifecare celebrated the opening of the new Pinesong community centre. The centre provides an extensive range of amenities for residents, including a lounge, café and restaurant, a hobbies room and a meeting area. More than 400 people live at Pinesong and I think each and every one of them attended the opening event. Oldest resident Jessie Budd cut the ribbon and two other oldest residents Leslie and Maureen Harris cut the cake. It was a huge celebration and you can just tell all the residents love living at Pinesong with its resort type atmosphere, its peaceful surrounds and its sweeping sea views.

I was asked to speak and I used the opportunity to acknowledge the late Mrs Thora Conlon who bought the Pinesong land during the war as a gift for her husband. The site was her paradise and she nurtured the land and raised a family on the property right up until she died in the early 1990s. The original family home was, I believe, converted into one of the first 'dine and dance' facilities in Auckland known simply as Pinesong. Sadly there was a fire one Guy Fawkes night and the place was destroyed - only to rise again as the beautiful facility which carried on as a convention centre right on the clifftop with magnificent views of the Manukau.

Mrs Conlon's son, Martin, developed the Pinesong 9 Golf Club in the early 1980s which became a huge Green Bay attraction. Sadly with the death of Mrs Conlon and only the two children left, it was decided to sell the family property. However, Pinesong as it is now would be greatly appreciated by Mrs Conlon. Homes for the elderly in their retiring years, in such a tranquil setting - very fitting for a lady that lived and loved Pinesong with compassion and care herself. As I mentioned at the opening celebration, I think Mrs Conlon should have some kind of formal acknowledgement, maybe a plaque or a street name, and so I am asking the New Lynn Community Board to investigate exactly what we can do.



## **NEW TITIRANGI RESTAURANT**

As you know, I always like to plug new business in this City and so it is with please I can advise that the new La Vincci Café in the Titirangi Village looks absolutely fantastic. The new owner of the former Café Boss is Mustafa Kokcu, and he's certainly made some changes. The restaurant now has table service and there's more of a selection in terms of the breakfast and lunch menu. Indeed breakfast will be serviced all day and the choice of food is extensive. Originally from Turkey, Mustafa and his wife have four children and have been in the hospitality industry for many years. I strongly recommend you call in and experience Mustafa's food and service.

## **RECOMMENDATIONS**

1. That the Report of the Mayor be received.
2. That the New Lynn Community Board explore an acknowledgement of the late Pinesong owner, Mrs Thora Conlon, outside of the complex itself, and report back on the best option.

RA Harvey, QSO, JP  
**MAYOR OF WAITAKERE**