



TOWARDS

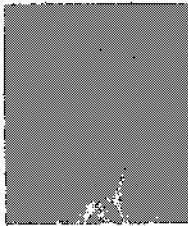
# land TRANSPORT

21 - 24 NOVEMBER 2004 • MICHAEL FOWLER CENTRE & WELLINGTON TOWN HALL • WELLINGTON, NEW ZEALAND

You are invited to attend an exciting conference to discuss and listen to innovative ideas on achieving sustainable land transport. The New Zealand Transport Strategy will celebrate its second anniversary in December 2004, providing an opportunity for interesting and provocative discussions on land transport directions.

The Conference Towards Sustainable Land Transport is promoted by the New Zealand Road Controlling Authorities Forum (RCA) and has the support of the Ministry of Transport, Local Government New Zealand, the Land Transport Safety Authority, Transit New Zealand, Transfund New Zealand and the Greater Wellington Regional Council.

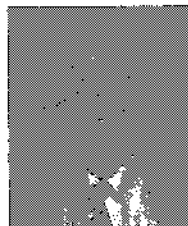
**Prof William A V Clark** William Clark is Professor of Geography and Statistics at UCLA. He is a member of the American Academy of Arts and Sciences and an Honorary Fellow of the Royal Society of New Zealand. He studies demographic change and the nature of the spatial outcomes of both internal and international population migration flows. His recent research examines models of residential mobility and the sorting processes that bring about residential differentiation in the urban fabric.



**Prof Sharon Beder** Sharon Beder, School of Social Sciences, Media and Communication, University of Wollongong, is author of several books including Toxic Fish and Sewer Surfing, The Nature of Sustainable Development, Global Spin: The Corporate Assault on Environmentalism, The New Engineer, Selling the Work Ethic and Power Play: The Struggle to Control the World's Electricity. In 2001 she won the World Technology Award in Ethics and in 2003 she was named one of Australia's top ten environmental thinkers by the Bulletin.



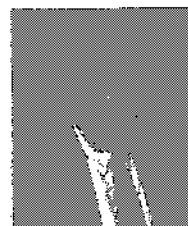
**Prof Peter Gordon** Peter Gordon is a Professor in the University of California's School of Policy, Planning and Development and in its Department of Economics. Peter's research interests are in applied urban economics. Peter and his colleagues have developed the Southern California Planning Model which they apply to the study of a wide variety of economic impacts at detailed spatial and sectoral scales.



**Prof David Begg** is Chairman of the Commission for Integrated Transport which provides expert advice and carries out independent research on transport issues and their interface with environment, health, the economy and society generally. He is also Director of the Centre for Transport Policy at the Robert Gordon University, Aberdeen, and Director of the Portobello Partnership. David is a non-Executive Director for the Strategic Rail Authority, a Board Member of Transport for London, and non-Executive Director at the Greater Manchester Passenger Transport Executive.



**Dr Hal Kassoff** Hal Kassoff is a Senior Vice President with Parsons Brinckerhoff (PB) responsible for providing leadership in emerging highway-related practice areas. Hal has guided the development of a workshop on Sustainable Highways in which PB staff and clients have participated. He also led the team that produced PB's reference guide for Concepts in Contextual Highway Design. Prior to joining PB, Hal spent 25 years with the Maryland Department of Transportation, including 6 years as Director of Planning and Preliminary Engineering and 12 years as State Highway Administrator. During Hal's tenure, SHA was recognized for its aesthetic and environmentally sensitive bridges and highway designs.



**Brian Souter, Chief Executive, Stagecoach Group** Brian Souter was a co-founder of Stagecoach and has extensive experience and knowledge of the ground transportation industry across a number of continents. As Chief Executive, he is the architect of the Company's strategy and management philosophy.



# Overview of papers to be presented – detailed programme out later in the year

Welcome and official opening: Mayor of Wellington

Keynote Address: Minister of Transport

## Keynote Speakers

Prof Peter Gordon – University of Southern California – **Sustainability Planning: Planners first do no harm**

Prof William Clark – UCLA – **The end of world population growth in the 21st Century: Implications for Sustainable Communities**

Prof Sharon Beder – University of Wollongong – **Environmental and Social Issues**

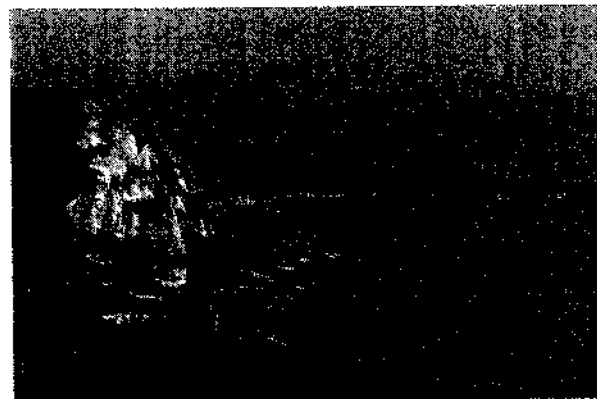
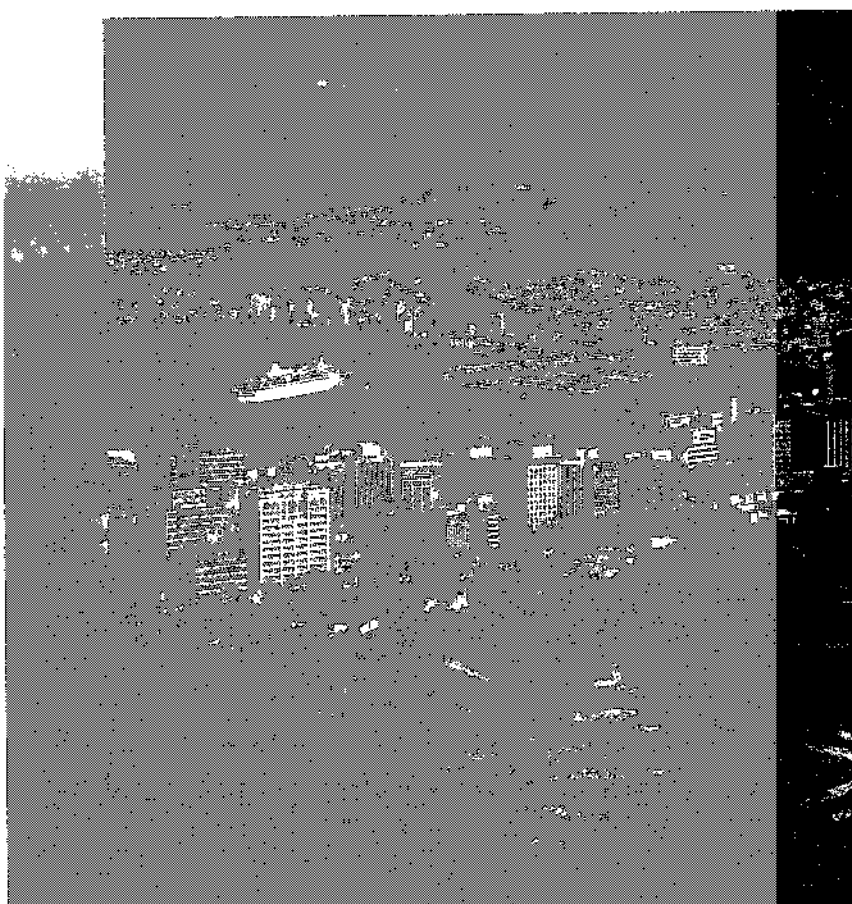
Dr Hal Kassoff – Washington, DC, USA – **Transport and Sustainability**

Prof David Begg – Chair, UK Commission for Integrated Transport – **Pricing Solutions for Sustainable Transport**

Brian Souler – Chief Executive, Stagecoach Group – **The role of enterprise in public transport**

## MONDAY 22 NOVEMBER

| SESSION 1:<br>NZ Transport Strategy & Sustainability  | SESSION 2:<br>Safety   | SESSION 3:<br>Travel Choice Access and Mobility   |
|---|--|---|
| Australian Land Transport - is it Sustainable?<br><i>Philip Laird &amp; Gabriella Adorni-Braccesi</i>         | Prediction Models for Pedestrian and Cycle Accidents. <i>Shane Turner, Tony Francis, Graham Wood</i>         | "Are Warrants for LATM Meaningful?"<br><i>Ray Brindle</i>   |
| Sustainable Planning and Network Management. <i>Malcolm Douglass</i>  | Road Infrastructure Safety Assessment (RISA)<br><i>Ian Appleton, Murray Noone, John Hannah</i>               | Making the right choice - the difference for government and individual.<br><i>Elizabeth Ampt</i>  |
| Taking the lead - turning sustainable transport policies into success stories<br><i>Bernadine Walsh</i>       | Road Safety Provisions in District Plans<br><i>Ian Appleton, Chris Hansen</i>                                | A Microsimulation Model of Travel Behaviour for use in the Analysis of Policies and Initiatives for Sustainable Transport. <i>Min Xu, Michael A P Taylor, Steve Hamnett</i> |
| Supporting sustainable transport modes through city plans. <i>Setaroh Masoud-Ansari</i>                       | A Review of the Skid Resistance Investigatory Levels for New Zealand<br><i>John Donbavard, Chris Kennedy</i> | Creyke Road Living Streets Pilot Project - Traffic Calming an Arterial Road in Christchurch, New Zealand. <i>Andrew Macbeth, Paul Burden, Grant Edge</i>                    |
| Decision Model for Sustainable Land Transport.<br><i>Richard Lumsden, Carol Boyle</i>                         | Transit New Zealand's State Highway Safety Plan. <i>Dennis Davis</i>   | New Zealand's Cycle Network and Route Planning Guide. <i>Lyndon Hammond, Tim Hughes</i>   |
| The Land Transport Management Act 2003 - One year on: Legal and Practical Perspectives.<br><i>Vernon Rive</i> | Crash risk relationships for improved safety management of roads. <i>Peter Cornek, Robert Davies</i>         | Walking and cycling - an example of balancing the aims of transport sustainability and road safety. <i>Craig Gordon, Tim Hughes</i>   |
| South Australia's Transport Plan<br><i>Mark Elford</i>  | Road Safety in New Zealand - 2010 and beyond.<br><i>Andrew Heam/David Wright</i>                             | Understanding the nature of "short trips" in the New Zealand context. <i>Carolyn O'Fallon, Charles Sullivan</i>   |
| Ending car dependence: Will technology beat social change? <i>Ray Brindle</i>                                 | Trends in road travel risk in recent years: by time and space. <i>Jagadish Guria, Kelly Mara</i>             | What will really make a difference for cycling?<br><i>Jane Dawson</i>   |



TOWARDS  
**SUSTAINABLE  
land** TRANSPORT

## TUESDAY 23 NOVEMBER

| SESSION 1:<br>Continuation of: NZ Transport Strategy & Sustainability   | SESSION 4:<br>The Environment   | SESSION 3:<br>Continuation of: Travel Choice Access and Mobility   | SESSION 5:<br>Technical Session  |
|---|---|--|--|
| Examining The Emperor's New Clothes - Myths and Truths for Sustainable Transportation. <i>Glen Koorey</i>     | Moving environmental and social concerns up the agenda. <i>Lisa Rossiter</i>  | Child cycle use and parental perceptions of cycle road safety. <i>Bryce Cleland, Jared Thomas, Darron Walton</i>                                       | Roadmarking - Know and Understand what the Alternatives are. <i>Bob Carnaby</i>  |
| Building and Maintaining the Network Under the New Zealand Transport Strategy. <i>Chris Olsen</i>             | Transport, The Environment & Health. <i>David Kilsby, Philip Laird</i>  | Massey University transport study 2003: Willingness to accept alternative transport modes. <i>Darren Walton, Jared Thomas, Bryce Cleland, W Parker</i> | Comparison of Environmental Impacts of Cutback and Emulsified Bitumen for Sealing Roads. <i>Grag Slaughter</i>                         |
| Funding impacts of the New Zealand Transport Strategy on the Contracting Industry. <i>Chris Olsen</i>         | Bringing biofuels to market in New Zealand. <i>Elizabeth Yeaman</i>   | Mode Integration: The Eastern Transport Corridor, Auckland. <i>Ian Clark</i>   | Developments in High Speed Street Lighting Performance Measurement Techniques to cover Main Roads. <i>Roger Loveless, Jackson Hill</i> |
| Sustainable Access Management of Rural Highways. <i>David Young, Marv Laurer, Paul Phillips, Debora Field</i> | Policy complications arising from hydrogen based sustainable network. <i>Steve Jenkins, Mark Ashby</i>  | Good Accessibility - Does this influence how we Work, Live and Play? The Dammora Success Case Study. <i>Urie Bezuidenhout, Sylvia Allan</i>            | Heavy Duty Unsealed Roads: Upgrading for Logging Development. <i>Murray Voss, David Hutchison, Daniel Crichton</i>                     |
| Towards Socially Sustainable Infrastructure Projects. <i>Justine Bray, Angela Shaw</i>                        | Transit New Zealand's Waste and Energy Management Policy. <i>Debbie Firestone</i>   | <b>SESSION 6: Urban Land Transport</b>   | Stop that Creep! A cost effective approach for arresting sliding of banks. <i>Quentin Goldsmith, Alex Crichton</i>                     |
| <b>SESSION 7: Auckland Issues</b>   | Emission Reduction Strategies for Commercial Fleets - Buses. <i>Robert Raine, Stephen Elder, Gareth Jones, Jayne Metcalfe</i>   | KEYNOTE ADDRESS: The role of enterprise in public transport. <i>Brian Souter - Stagecoach Group</i>  | Prioritising Maintenance Management of Unsealed Roads. <i>Ian Marshall, Ray Hamilton, David Hutchison</i>                              |
| The ARC's vision for ARTA, and ARTA's role in Auckland Transport. <i>Auckland Regional Council</i>            | Estimating total health benefits of switch from private car to public transport. <i>Tord Kjellstrom</i>   | Creating a Sustainable Central Business District that Works. <i>Peter Kortegast</i>  | Aggregate Depletion in the Auckland Region. <i>Graco Schafer, Carol Boyle</i>  |
| Drivers of Travel Choice. <i>Anne Stewart</i>   | Estimation and Evaluation of Traffic Noise on urban road network using roadnoise package. <i>Pongrid Klungboonkrong, Ait Tippichai</i>  | Nelson Integrated Transport Strategy - A Best Practice Case Example. <i>Roger Boulter</i>  | Sustainable Skid Resistance Surface Treatments. <i>Jeff C Waters</i>   |
| Why Auckland Needs Travel Demand Management (TDM). <i>Anne Percy</i>  | Incorporation of Caline-4 and GIS for analyzing air pollution from road traffic on link-based network: the Khon Kaen Case Study. <i>Ait Tippichai, Pongrid Klungboonkrong</i> | Transport Disadvantage and Sustainability. <i>Jago Dobson</i>  | Sustainable Delivery of Community Outcomes Through Pavement Deterioration Modelling. <i>Craig Thew, Brian Sharplin, Theuns Henning</i> |
| The Auckland Rail Project. <i>Elena Trout, Christine Perrins</i>  |   | How Sustainable is Wellington City's Transport System? An Assessment of Trends using Census Data. <i>Cliff Naudé</i>                                   |  |

## WEDNESDAY 24 NOVEMBER

| SESSION 8:<br>Economic Development and Funding  | SESSION 4: Continuation of:<br>The Environment   | SESSION 6: Continuation of:<br>Urban Land Transport   | SESSION 5: Continuation of:<br>Technical Session   |
|---|--|---|--|
| Coupling Strategy with Funding. <i>Wayne Donnelly</i>   | New Zealand Rooding Network - Integrated Stormwater Management Guidelines. <i>Brian Kouvels, Bill Armstrong</i>  | Integrated Planning for Transport - the Wellington Central City Example. <i>Gerald Blunt</i>  | Maintenance Treatment Selection and Design: Achieving Efficiency and Reliability in the Field. <i>Peter Mortimer, Keith Robertson</i>    |
| The Relationship Between Economic Development and Traffic Growth in Australian Cities. <i>David Gargett</i> | The Murty Waters of Stormwater Management - A Case Study Transit NZ - SH74/Main North Road: Four Lining Project. <i>Jamsin Page</i>                      | Wellington rail and the sustainable vision: Putting US experience in a Kiwi context. <i>Brian Efford</i>  | Preventive drainage works for sustainable road management on State Highway 31 (Kawhia Road). <i>Gara Lauder</i>                          |
| The Linkage between Economic Growth and Road Freight Activity. <i>Tony Friedlander</i>                      | Understanding the structure of the public's knowledge of the polluting effects of vehicle emissions. <i>Darren Walton, Vince Dravitzki, Jared Thomas</i> | Why don't more people catch the bus? <i>Anne Stewart, Andrew Parsons</i>  | Sustainable Pavement Construction, a Contribution to the Triple Bottom Line. <i>Michael Haydon, Peter Houba, Richard Green</i>           |
| Transport Funding and Pricing. <i>Jack Opiala, Andrew Rudy</i>  | Contractor Driven Environmental Initiatives. <i>Greg Slaughter, Bharu Kothiyal, Gavin Hartley</i>  | The Benefits of Improving Passenger Transport Infrastructure in Auckland. <i>Derek McCoy, Stuart Knarston</i>   | NZ Trials of recycling reclaimed asphalt and rubber crumb in hot mix asphalt. <i>John Patrick, Gray Cook, Sheryn Keilly, Sarah Jones</i> |
| The relationship between transport infrastructure investment and economic growth. <i>Carolyn O'Fallon</i>   | Modelling interdependencies among Vehicles' Pollutants: Methodology, Analysis Techniques and Findings. <i>Waia M Dabbas</i>                              | <b>SESSION 9:<br/>Intelligent Transport Systems</b>   | Sustainable Road Management Practices and Skid Resistance Policy. <i>Douglas J Wilson</i>  |
| A Study on the Financing for Management of Road Network in New Zealand and Japan. <i>Masayuki Kurihara</i>  | Case Studies of Alternative to Rooding Projects. <i>Warwick Watbran, Tony Brennan</i>  | Transit New Zealand's ITS Strategy. <i>Rod James</i>  | Up to the Mark? Industry comment on the 2004 ITSA Roadmarkings Road Safety Survey findings. <i>Alister Harlow</i>                        |
| The impact of demographic and structural change on transport. <i>John Ballingall, Doug Steel</i>            |  | Evaluation of Stage 1 of Auckland's signal pre-emption and real time passenger information system. <i>Vadi Venkatachellum, Bill Draper, Phillips Mitchell</i> |  |
|   |  | ITS Innovations and Future Trends in support of sustainable transport policy. <i>Rod James</i>  |  |

## WHO SHOULD ATTEND

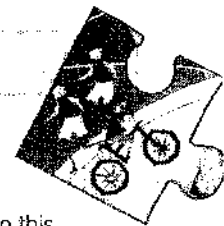


This conference is of interest to all who deal with land transportation issues and policies. People who need, or want, to have an understanding of the issues facing transport and who wish to enjoy the experience of well considered, innovative papers, should also attend.

This includes:

- Elected central and local government representatives with transportation portfolios.
- Transportation CEOs with interests in all modes of land transport
- Bus companies
- Rail operations
- Heavy haulage
- Vehicle fleets
- Road Controlling Authority Managers
- Local Authority Land Transportation Asset Managers
- Local Authority Planning and Engineering Staff
- Consulting Engineers involved in transportation planning, research and design
- Contractors involved in performance specified maintenance contracts, road design and construction
- Suppliers of fuel and construction materials for the land transport industry
- Suppliers of technology based products for the land transport industry
- Transit New Zealand staff and Project Supervisors
- Transfund New Zealand Land Transport Funding Management staff
- Tertiary education lecturers and researchers to update their transportation knowledge
- Resource Management lawyers
- LTSA staff and those interested in transport safety issues

## ACCOMMODATION



Special conference rates have been negotiated for delegates at the following listed hotels. Rooms range from single/double/twin share to deluxe suites. All hotels have a rating of 2-5 star accommodation. All prices are per night and GST exclusive (NZ 12.5% GST). Website and email addresses have been supplied for your information. When making bookings with these hotels, please advise that you are attending the "TSLT conference" as the rates quoted are specific to this conference. Early accommodation bookings are recommended due to Wellington being busy in November.

| HOTEL   | RATES (BDBM ONLY) | WALKING DISTANCE TO VENUE                           | CONTACT DETAILS   |
|---|-------------------|---|---|
| Intercontinental Wellington<br>Rating: 5 star       | \$190 - \$255     | 8 minutes   | www.intercontinental.com<br>Email: lisa_millar@interconti.com<br>Ph: 04-472-2722 (ask for Lisa Millar)                    |
| Duxton Hotel<br>Rating: 4½ - 5 star                 | \$190 - \$420     | 2 minutes   | www.duxton.com<br>Email: res@wellington-duxton.co.nz<br>Ph: +64-4-473-3900  |
| James Cook Hotel Grand Chancellor<br>Rating: 4 star | \$155 - \$185     | 8 minutes   | www.grandhotelsinternational.com<br>Email: reservations@jamescookhotel.co.nz<br>Ph: +64-4-495-0279                        |
| Novotel Capital<br>Rating: 4 star                   | \$170             | 8 minutes   | www.novotel.co.nz<br>Email: reservations@novotelcap.co.nz<br>Ph: +64-4-918-1900   |
| Museum Hotel<br>Rating: 4 star                      | \$175 - \$235     | 2 minutes   | www.museumhotel.co.nz<br>Email: info@museumhotel.co.nz<br>Ph: +64-4-802-8900  |
| Mercure Hotel<br>Rating: 3½ star                    | \$140             | Shuttle to venue<br>Taxi back or approx 20 min walk | www.mercure.co.nz<br>Email: reservations@mercurewlg.co.nz<br>Ph: +64-4-385-9829   |
| West Plaza Hotel<br>Rating: 3½ star                 | \$139             | 2 minutes   | www.westplaza.co.nz<br>Email: reservations@westplaza.co.nz<br>Ph: +64-4-473-1440<br>Quote Booking Ref: WPH/LANDTRANSP/104 |
| Bay Plaza<br>Rating: 3 star                         | \$120             | 7 minutes   | www.bayplaza.co.nz<br>Email: reservations@bayplaza.co.nz<br>Ph: +64-4-385-7799<br>Quote booking ref: BPH/LANDTRANSP/1104  |
| Hotel Ibis Wellington<br>Rating: 3 star             | \$122             | 5 minutes   | www.ibishotels.co.nz<br>Email: reservations@ibiswlg.co.nz<br>Ph: +64-4-496-1880   |
| The Chancellor - Wellington<br>Rating: 2 star       | \$95              | 5 minutes   | www.grandhotelsinternational.com<br>Email: info@hotelchancellor.com<br>Ph: +64-4-385-2153                                 |

## WELLINGTON

Wellington, New Zealand's capital, is a picture perfect city. It is set between a magnificent harbour and rolling green hills. It is also a compact city where funky shops, exciting galleries and great range of fabulous restaurants are within easy walking distance. It exudes culture with a true cosmopolitan feel with diverse offerings from Broadway shows to being the home of the Royal New Zealand Ballet and the New Zealand Symphony Orchestra. You will enjoy yourself in this marvelous city... everyone does. Wellington's website is [www.wellingtonnz.com](http://www.wellingtonnz.com)

## FUNCTIONS

**Sunday 21 November: Registration** is from 12 midday at the Michael Fowler Centre, 111 Wakefield Street, Wellington.  
**Trade Displays opening function** 5.30pm – 7.00pm at the Michael Fowler Centre and Wellington Town Hall.

**Monday 22 November: Partners Programme** – 9.00am – 4.30pm Tour of the Wairarapa region visiting various places of interest (eg Winery, Paua Factory, Lord of the Rings film sites, shops, parks and the beautiful scenery of the Wairarapa).  
**Cocktail Function** at the Michael Fowler Centre from 5.30 to 7.30pm.

**Tuesday 23 November: Conference Dinner** at the Westpac Stadium from 7.00pm – midnight. Come and enjoy the wonderful ambience of the Stadium and mingle with the people that you have been conferencing with for the last couple of days.

Entertainment is the: "The Beat Girls" – fantastic NZ stage entertainers -- sing along to music that everyone knows, or dance the night away. There is a lounge area for those that just wish to relax and chat. Buses will be available to pickup and drop off delegates from those hotels published in the Accommodation section.

Further details of the above functions you wish to attend will be detailed with acknowledgement of your registration.

## TRADE DISPLAYS

Trade displays are a feature of the conference. The main trade display is in the Wellington Town Hall. This is also the lunch venue, and the location for lunchtime activities, that include demonstrations, competitions and presentations designed to ensure maximum attendance and participation. Some trade stands will also be available in the entrance foyer to the Michael Fowler Centre, these are ideal for high impact displays and for professional organisations wishing to advertise memberships or for future events. In all, 59 stands will be made available at prices ranging from \$1,000.00 to \$3,000.00. If you are interested please contact or tick off on the registration form at the rear of the brochure:

Contact person: Stuart Fraser, Transit New Zealand.  
Phone: +64-(0)4-496-6698, Fax: +64-(0)4-496-6666, Email: [stuart.fraser@transit.govt.nz](mailto:stuart.fraser@transit.govt.nz)

## SPONSORS



transport safety



# REGISTRATION INFORMATION

## How to Register

Fill in all details - print clearly.

Post registration form and full payment (in \$NZ) to: NZ Institute of Highway Technology, PO Box 4273, New Plymouth, New Zealand.  
 Cheques to be made out to: NZ Institute of Highway Technology. On-line registration: [www.nzihl.co.nz](http://www.nzihl.co.nz) (under "special events")  
 Credit card facilities are not available. Alternative arrangements for direct credit can be made on request.

## For all enquiries please contact:

Conference Co-ordinator: Lynette Walsh. Ph: +64-(0)6-759-7065; Fax +64-(0)6-759-7066; Email: [lynette@nzihl.co.nz](mailto:lynette@nzihl.co.nz)

## Principal Registration

Name \_\_\_\_\_

Preferred name on badge \_\_\_\_\_

Company Name \_\_\_\_\_

Postal Address \_\_\_\_\_

Business phone \_\_\_\_\_ Fax \_\_\_\_\_ Mobile \_\_\_\_\_

Email \_\_\_\_\_ Special dietary requirements or disabilities \_\_\_\_\_

Order No. \_\_\_\_\_

## Accompanying Partner

Name \_\_\_\_\_

Preferred name on badge \_\_\_\_\_ Special dietary requirements or disabilities \_\_\_\_\_

## Fees (all inclusive of GST of 12.5%) Full payment required with registration

| Indicate what you wish to attend as the principal delegate, and any additional tickets that you require for an accompanying partner (full details of functions can be found within this brochure)   |                   |                       |    |
|---|-------------------|-----------------------|----|
|   | Fees              | Cost                  |    |
| <b>Early Bird registration</b> which includes conference fees and all functions (registrations with full payment due by 31 August). For catering purposes, tick the functions that you will attend.<br>Opening of Trade Displays - Sunday Evening <input type="checkbox"/><br>Cocktail Function - Monday evening <input type="checkbox"/><br>Conference Dinner - Tuesday evening <input type="checkbox"/> | \$775.00          | \$                    |    |
| Full attendance at conference which includes all functions (registration after 31 August). For catering purposes, tick the functions that you will attend.<br>Opening of Trade Displays - Sunday Evening <input type="checkbox"/><br>Cocktail Function - Monday evening <input type="checkbox"/><br>Conference Dinner - Tuesday evening <input type="checkbox"/>  | \$875.00          | \$                    |    |
| Daily conference registration. (This does not include attendance at any of the functions)<br>Tick which day/s you will attend:<br>Monday conference <input type="checkbox"/><br>Tuesday conference <input type="checkbox"/><br>Wednesday conference <input type="checkbox"/>  | \$375.00 per day  | \$                    |    |
| <b>Additional Tickets for Accompanying Partner</b>  | <b>Fees</b>       | <b>No's attending</b> |    |
| Partners Programme  | \$110.00          |                       | \$ |
| Opening of Trade Displays - Sunday evening  | \$20.00           |                       | \$ |
| Cocktail Function - Monday evening  | \$25.00           |                       | \$ |
| Conference Dinner - Tuesday evening   | \$75.00           |                       | \$ |
|   | <b>Total Cost</b> |                       | \$ |

## Conference Cancellations

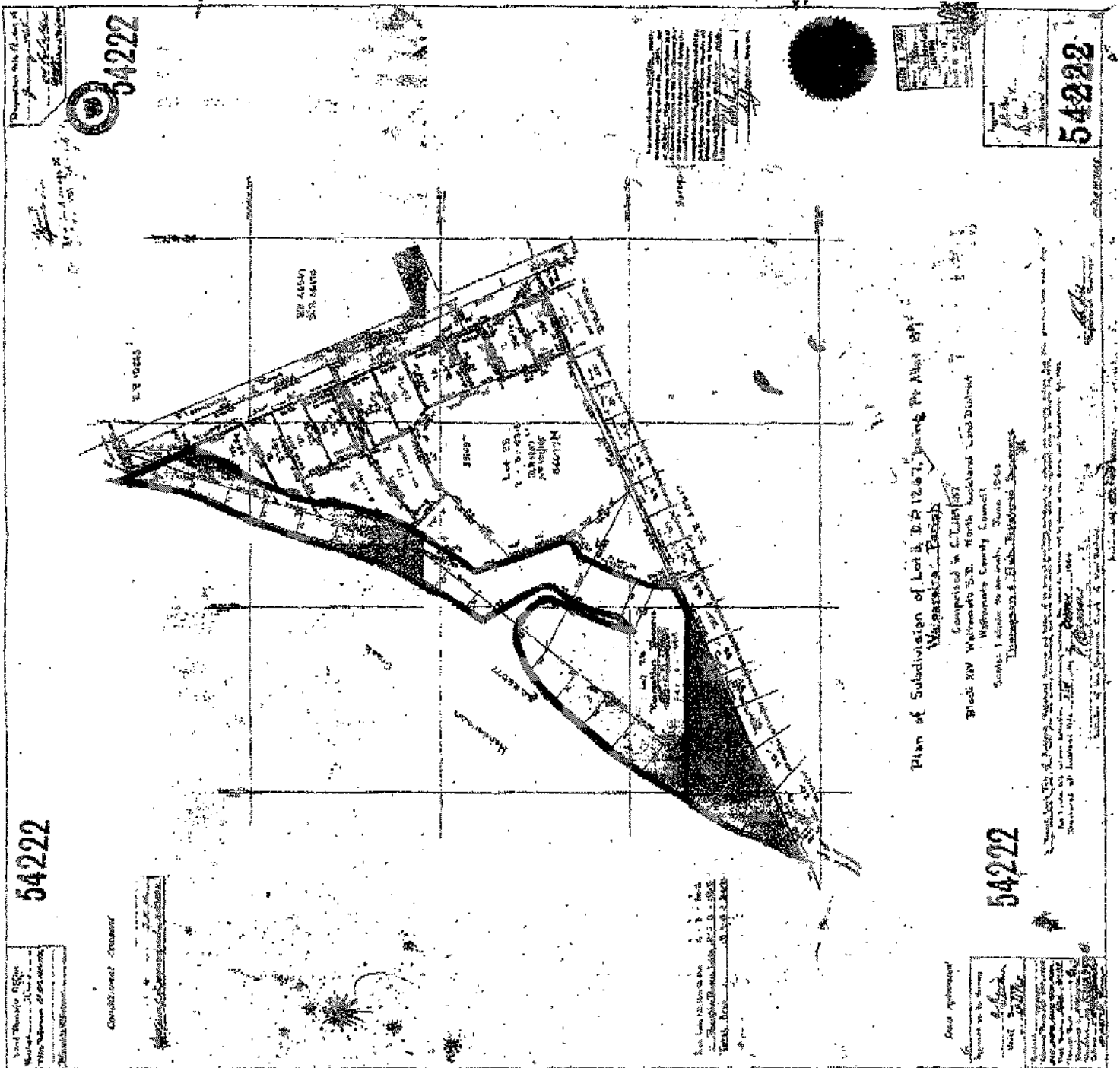
Participant withdrawals must be notified in writing. Withdrawals five days prior to the Conference will be charged at 50% of registration fee. There is no refund for non-attendance. Substitute participants are welcome. No reduction in the registration fee will be allowed if the delegate is unable to attend the conference dinner or other functions. Any refunds will be at the discretion of the Organising Committee and will be processed after the Conference.

## Trade Displays

Are you interested in having a trade display at the Michael Fowler Centre and Wellington Town Hall? (If yes, please tick)

Stuart Fraser from Transit New Zealand will be in touch with you to go through this in detail with you and also to book a site for your display. To view the Trade Display floorplan please check our website [http://www.nzihl.co.nz/special\\_events/tsli/index.html](http://www.nzihl.co.nz/special_events/tsli/index.html)

A21



A22

