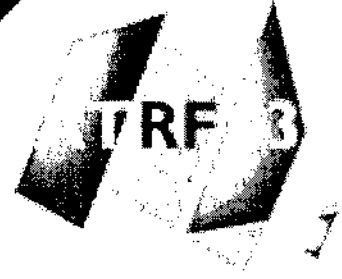


26TH AUSTRALASIAN TRANSPORT RESEARCH FORUM

Leading Transport Research in the 21st Century

1-3 October 2003, Hotel Intercontinental, Wellington, New Zealand



The 26th Australasian Transport Research Forum (ATRF03), 'Leading Transport Research in the 21st Century', will be held in Wellington, New Zealand, 1-3 October 2003.

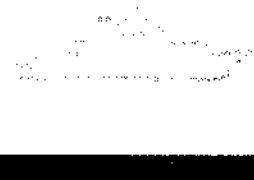
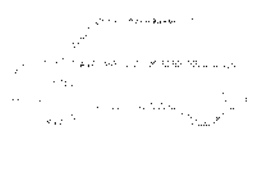
The theme of this year's conference is Leading Transport Research in the 21st Century. There will be presentations concerning road, rail, marine, air, cycling, and public passenger transport, as well as a special plenary session/debate on 'sustainable transport'.

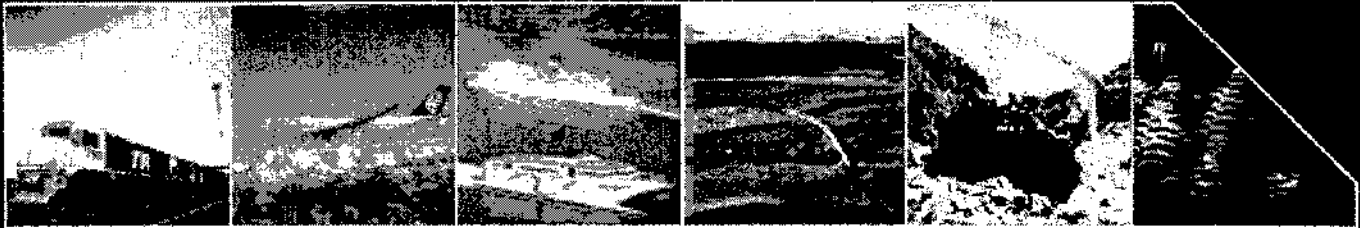
The ATRF is recognised as the key transport planning and policy discussion forum for both the public and private sectors. It brings together academics, practitioners, policy and planning professionals and others with an interest in transport research to share the latest transport research findings. The importance and value of the ATRF lies in the contributions of the researchers who prepare and present papers, the paper referees and the wide and diverse range of people who attend the conferences. The ATRF has made, and continues to make, a real and significant contribution and improvement to transport in Australasia.

This conference will provide an opportunity to hear papers from a wide range of speakers – academics, policy makers and practitioners.

It will also provide an opportunity to participate in discussions and debates on wide ranging transport issues related to land, marine and air transport.

There will also be many opportunities to network with colleagues from many parts of the world and from all parts of the transport sector.





Draft Programme

Wednesday 1 October 2003

- 0815 – 0900 Registration
- 0900 – 0915 Welcome & Official Opening - Mayor of Wellington
- 0915 – 0945 Keynote Address – Hon. Paul Swain, NZ Minister of Transport
- 0945 – 1715 Presentation of Papers in three concurrent sessions covering travel behaviour, personalised marketing programmes, public transport, safety issues, trends, etc
- 1900 Conference Dinner at Te Papa, Museum of New Zealand (Dinner Speaker)

Thursday 2 October 2003

- 0830 – 0900 Registration
- 0900 – 0945 Keynote Address – Alastair Bisley, NZ Secretary for Transport
- 0945 – 1245 Presentation of papers in three concurrent sessions covering travel behaviour, travel demand, hazards, infrastructure, freight, transport related environmental issues, etc.
- 1345 – 1715 Special session – Sustainable Transport. There will be a presentation of two papers, contributions by two commentators followed by an open forum debate.
- 1730 – 1930 Cocktail Function at Museum of Wellington - City and Sea.

Friday 3 October 2003

- 0830 – 0900 Registration
- 0900 – 0945 Keynote Address (To Be Advised)
- 0945 – 1445 Presentation of papers in three concurrent sessions covering transport related environmental issues, road pricing, transport policy and planning issues, accident analysis, urban form, transport modelling, etc.
- 1445- 1545 Conclusion, Presentations and Conference Closing

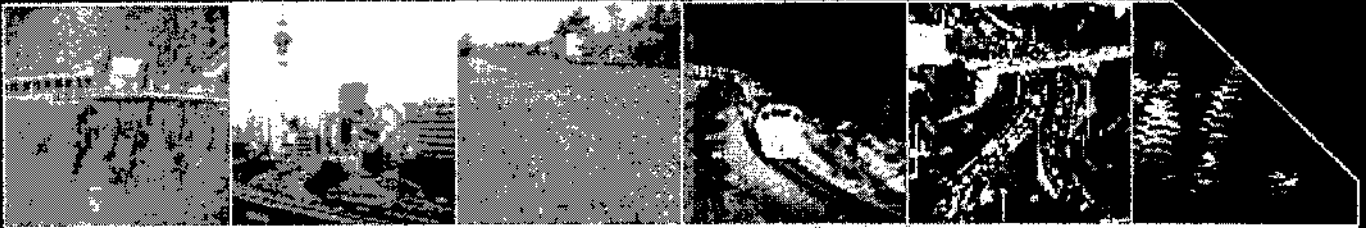
Conference Registration Fee

The conference registration fee will be \$NZ750 (plus gst of 12.5%) with an early-bird registration fee of \$NZ700 plus gst for registrations received before 1 July 2003. This fee includes morning and afternoon teas, lunches, the conference dinner, the cocktail function and the conference proceedings on CD-ROM. A Student registration of \$NZ450 plus gst will be available (student ID or similar required), as will daily registrations at \$NZ250 plus gst per day. The daily registrations will include morning and afternoon tea and lunch but will not include the dinner, cocktail function or proceedings. There will be \$NZ75 plus gst cost for partners or non-delegates wishing to attend the dinner.

Sponsorship and Trade Displays

There will be opportunities for companies, consultants and organisations to advertise and display their services to conference participants. A freestanding own-stand will cost \$NZ500 (plus gst of 12.5%) while an organiser-provided stand will cost \$NZ1000 plus gst. If you are interested please contact Lynette Walsh (Conference Co-ordinator).





Who Should Attend

The Conference will be of interest to

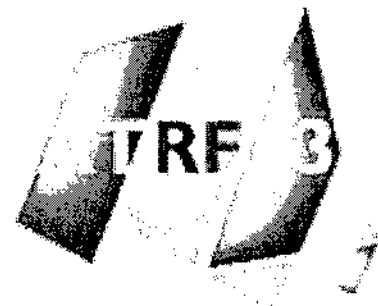
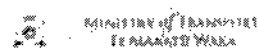
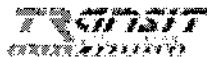
- All those associated with the transport sector – road, rail, air and marine
- Central Government Transport organisations
- Local Governments and Territorial Authorities
- Transport safety organisations (land, air and sea)
- Academics
- Researchers
- Public Transport providers
- Planners
- Transport researchers
- Heavy vehicle operators
- Shipping industry
- Automobile Associations
- Tourist industry
- Airport operators
- Freight carriers
- Suppliers of transport related equipment and products
- Contractors with interests in transport
- Consultants with interest in transport

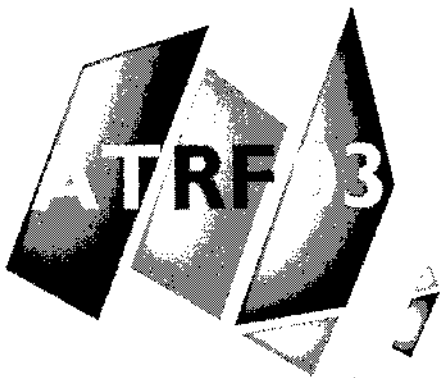
Partners Programme

A partner's programme involving lunch at, and a visit to a winery in Martinborough in the Wairarapa region (about 2 hours from Wellington) and possibly other events will be available subject to numbers. More details including cost will be provided later. Please indicate interest in participating when registering for the conference.

Accommodation

Conference attendees are required to make their own arrangements. The organisers have negotiated an excellent special accommodation rate of \$NZ150 (plus gst of 12.5%) per night with the 5 star Hotel Intercontinental, breakfast for in-house guests, \$15.00 incl gst. You are urged to take advantage of this rate. Should you wish to do so please contact the hotel direct, using the enclosed form, stating that you are with the ATRF Conference, at ph 64-4-472 2722, fax 64-4-472 4724, e-mail reservations at wellington@interconti.com. Address: Hotel Intercontinental, Cnr Grey and Featherston Streets, PO Box 175, Wellington. We have a list of other hotels available in close proximity if you require this.





26th Australasian Transport Research Forum
(Leading Transport Research in the 21st Century)
1-3 October 2003 – Wellington – New Zealand

Draft Programme

The following is a list of the papers that are to be presented at this year's Australasian Transport Research Forum. The final allocation of papers to the three streams of the Forum has yet to be done but a detailed programme will be prepared and will be available before the conference.

No.	Author	Organisation	Paper Title
1.	Mike Keall	Land Transport Safety Authority	Older Driver Crash Rates in Relation to Type and Quantity of Transport
2.	Bob Lloyd	ARRM Transport Research Ltd	Estimation of the cost of a Road Crash by Road User Movement Code and by Generic Road Type by Speed Limit
3.	Johnson Amoako Anthony Ockwell Madhumita Lodh Tim Risby	Bureau of Transport and Regional Economics	A Framework for Valuing the Economic Costs of Railway Accidents
4.	Steve Hamnett	University of South Australia	Sustainable Transport and Physical Activity
5.	David Meiklejohn	TravelSMART	A New Approach for Travel Behaviour Change in Universities
6.	Dr Alan Nicholson	University of Canterbury	The University of Canterbury Transport Strategy
7.	Dr Jean-Paul Thull	Transport Lecturer and Consultant	Mobility Management of High School Students in Christchurch, NZ
8.	Gayle Di Pietro	GDP Consultancy PTY Ltd	TravelSmart Schools – there really is a better way to go
9.	Ian Wallis Fergus Gammie	Booz Allen Hamilton	The Effectiveness of Travel Behaviour Change Programmes – the Australasian Evidence
10.	Fergus Gammie	Booz Allen Hamilton	Voluntary Employer Travel Plans: Can they Work in New Zealand?
11.	Carolyn O'Fallon Charles Sullivan	Pinnacle Research	Personalised Marketing – Improving Evaluation
12.	David Meiklejohn	TravelSMART	The Development of the Victorian TravelSMART Program
13.	Liz Ampt	Steer Davies Gleave	Voluntary Household Travel Behaviour Change – Theory and Practice
14.	Phil Harbutt	Department of Infrastructure	The Development of the Victorian TravelSMART Program



15.	Professor Peter Stopher	The Institute of Transport Studies	Travel Behaviour Modification: A Critical Appraisal
16.	Rita Seethaler	The Urban Transport Institute	Using the Six Principles of Persuasion to Promote Travel Behaviour Change
17.	Tony Richardson Rita Seethaler	The Urban Transport Institute	Design Issues for Before and After Surveys of Travel Behaviour Change
18.	Carolyn O'Fallon Charles Sullivan	Pinnacle Research	Old People's Travel Patterns and Transport Sustainability
19.	Ian Radbone	University of South Australia	Studying Adelaide's Taxis: Lessons for Researchers and Policy Makers
20.	Grace Corpuz John Peachman	Transport Data Centre	Measuring the Impacts of Internet Usage on Travel Behaviour in the Sydney Household Travel Survey
21.	Professor Geoff Rose	Institute of Transport Studies (Monash)	Using a Ride to Work Day Event to Promote Travel Behaviour Change
22.	Gavin Fisher Caroline Austwick	National Institute of Water and Atmospheric Research Ltd	Environmental Indicators: Air Quality and Transport
23.	Jeff Bluett Gerda Kuschell Gavin Fisher Jayne Metcalfe	National Institute of Water and Atmospheric Research Ltd	Something in the Way You Move? Remote Sensing of Vehicle Emissions
24.	Rose Gong	School of Chemical and Physical Sciences	Analysis of Size Distributions of Diesel Particulate Emissions with Light Scattering
25.	Johnson Amoako Anthony Ockwell	Bureau of Transport and Regional Economics	The Economic Consequences of the Health Effects of Transport Emissions in Australia
26.	Mandy Hochmuth	Victoria University of Wellington	Polyaromatic Hydrocarbons & Diesel Particulates
27.	Gavin Fisher Amanda Scoggins	National Institute of Water & Atmospheric Research Ltd	Health Effects of Vehicle Emissions
28.	Mike Timperley et al	National Institute of Water & Atmospheric Research Ltd	Zinc, Copper and Lead Loads in Road Run-off
29.	Lita Mendigorin	Transport Data Centre	The collection of heavy vehicle counts in an urban area and the use of the data in estimating small area commercial vehicle trips
30.	Matthew Jones	Rail Infrastructure Corporation	Regional Freight Rail Lines - Are they enjoying a Bright New Future
31.	Michael Taylor G M D'este	University of South Australia	Concepts of Network vulnerability & applications to the identification of critical elements of transport infrastructure
32.	Stuart Clement	University of South Australia	The SPA System and Delay Reduction at Signalised Intersections
33.	Bob Lloyd	ARRB Transport Research Ltd	Asset Management of Roads
34.	Dr Simon Kingham	University of Canterbury	Measuring Traffic-related Air Pollution Exposure: The HAPINZ Study
35.	Michael Taylor G M D'este N. Smith R. Zito	University of South Australia	Testing the impacts of alternative policy options on air pollutant emissions from urban freight transport
36.	Sharyn Kierce	Bureau of Transport and Regional Economics	The Relationship between Transport Economics and Policy in Australia
37.	Frank Primerano	University of South Australia	Towards a Policy Sensitive Accessibility Measure
38.	Roger Toleman	Ministry of Transport	Managing the environmental impacts of land transport: a measured approach to sustainability of integrating environmental analysis with urban planning.
39.	Lance D Chambers Hiedi Lansdell George Brown	Department for Planning and Infrastructure	Parking Policy: What we have and hope to achieve and with what rationale?
40.	Lance D Chambers Hiedi Lansdell George Brown	Department for Planning and Infrastructure	The Myth of Sustainable Transport
41.	David Bray	Economic and Policy Services Pty Ltd	A Framework and Approach to the Use of Multi-criteria Analysis



42.	Tony Brannand	Wellington Regional Council	Planning the Transportation System for Economic Development - A Survey of some of the Initiatives being Investigated in Wellington
43.	Assoc Prof Philip Laird	School of Mathematics & Applied Statistics	Australian Transport and Greenhouse Gas Reduction Targets
44.	Lance D Chambers Heidi Lansdell George Brown	Department for Planning and Infrastructure	Using the Millenium Cities Dataset & Worldwide City Policies for Developing Effectiveness Measures of Public Transport
45.	Philip Bullock	Institute of Transport Studies	Measuring Bus Performance Using GPS Technology
46.	Anne Stewart	University of Auckland	Drivers of Travel Choice
47.	Douglas NJ et al	Booz Allen Hamilton	The Estimation and Application of Corridor Specific Demand Parameters for Primary Public Transport Service Attributes
48.	Chris Kissling Don Babe	Lincoln University	Taxi Van on Rail
49.	Graham Currie, et al	Booz Allen Hamilton	Quantative Approaches to Needs Based Assessment of Public Transport Services - The Hobart Transport Needs Gap Study
50.	Graham Currie R Kinnewr I Wallis	Booz Allen Hamilton	Setting Public Transport Service Standards - An Economic Approach
51.	John Collins	Bus & Coach Association (NZ) Inc	Bus Priority Systems in Auckland, New Zealand
52.	Bob Cotgrove	University of Tasmania	Is Second Best Good Enough? London's Experiment with Urban Road Pricing
53.	Hilary Wise	National Roads & Motorist's Association Ltd	Tackling Transport Pricing
54.	Joanne Leung	Land Transport Safety Authority	Is Society Willing to Pay More for Children's Safety
55.	Lal Wadhwa	Civil & Environmental Engineering	Comfort Level of Cyclists at Roundabouts
56.	Athol Yates	Institution of Engineers	Engineering Safer Transport Infrastructure
57.	Roger Dunn	The University of Auckland	Experience of Using Flush Medians in Auckland City
58.	Roger Dunn Nathan Harper	The University of Auckland	Preliminary Results for Accident Prediction at Roundabouts - State of the Art in NZ.
59.	Yoshinao Oeda	The University of New South Wales	Evaluating Wheel Chair User Perception of Road Roughness
60.	Graham John Taylor	Queensland Department of Main Roads	The Elements of a Robust Electronic Compliance Monitoring System for Heavy Vehicles
61.	Peter Cleal	National Road Transport Commission	Addressing the Problem of Road Transportation of Overweight Intermodal Freight Containers - An Australian Approach to an International Problem
62.	Brett Hughes	Department for Planning & Infrastructure	The Australian National Railway Level Crossing Safety Strategy
63.	Ian Wallis Natalie Schmidt	Booz Allen Hamilton	Australasian Travel Demand Elasticities - an Update of the Evidence
64.	Ian Ker	ARRB Transport Research Ltd	Outcome-Based Appraisal of Travel Demand Management: Robustness & Pattern Recognition
65.	Carolyn O'Fallon Charles Sullivan	Pinnacle Research	Understanding & Managing Weekend Traffic Congestion.
66.	Carolyn O'Fallon Charles Sullivan	Pinnacle Research	Vehicle Occupancy in New Zealand's three Largest Cities
67.	Amilia Aldian	Transport System Centre	Modelling Travel Demand in Developing Countries
68.	Andre Dantas	University of Canterbury	Analysis of the Evolution of Travel Demand in Urban Areas: A Neutral Geo Temporal Modelling Approach
69.	Daniel Brown David Ashley	Sinclair Knight Merz	Greater Wellington's Trip Generation: A Person Based Approach and its Implications



70.	Daniel Brown David Ashley Mandy Liu Andrew Murray	Sinclair Knight Merz	Innovative Aspects of the Wellington Transport Strategy Model Networks and the Model Validation and Tuning Procedures
71.	Alan A Parker	Town & Country Planning Association (Victoria Australia)	Unsustainable transport trends in Census Data for the journey to work in major Australasian cities 1976 to 2001
72.	Tim Raimond	Transport Data Centre	Urban Consolidation and Travel Behaviour - Evidence from Sydney
73.	Cliff Naude Pdesborough	Wellington City Council	Modal Choice Changes in New Zealand - Evidence from Census Data
74.	Brett Hughes L Chambers H. Lansdell R White	Department for Planning & Infrastructure	Cities, Area & Transport Energy
75.	Allsop Evans Brooker	University College London, University of London Centre for Transport Studies & Craafield University	Integrated NZ Transport Sector Safety Strategy and Target Setting
76.	David Wilson Tony Hingston	RMIT University	An Assessment of Two Weighting Methods Using VATS Travel Survey Data
77.	Michael Curran	Transit NZ	Congestion Monitoring
78.	Stewart Milne	BARNZ	'Getting the Balance Right in the Aviation Sector
79.	Esmaeel Ayati	Assoc Prof Ferdowsi University, Mashad, Iran	Investigation of Traffic Safety in Province of Khorasan (Iran)
80.	Dimitris Tsolakis	ARRB	'Using Panel Data to Evaluate Road Safety Countermeasures'

