



graeme johansen
a r c h i t e c t

b.arch. a.n.z.i.a.
21 094
P.O. Box
Henderson
Auckland
(09) 817 6284
Telephone
Mobile 025 814 335

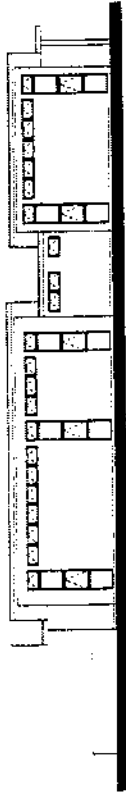
Preliminary Sketch Drawings
At: Cor Summerland Drive, &
Brookwood Drive,
Fur: Waitakere City Council.

04.109

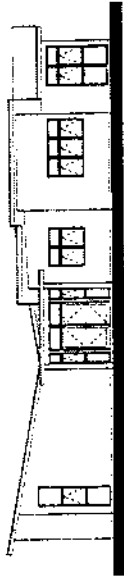
01



North



South

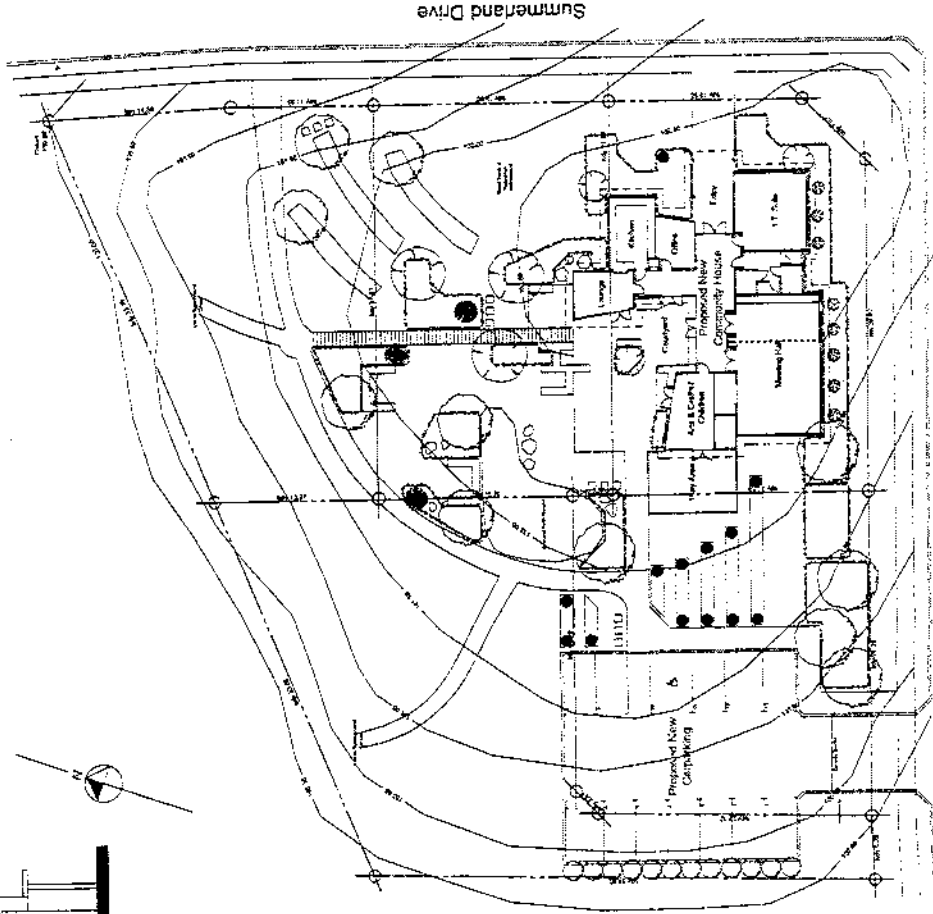


East



West

Elevations Scale 1:100



Brookwood Drive

Site Plan Scale 1:200

AI

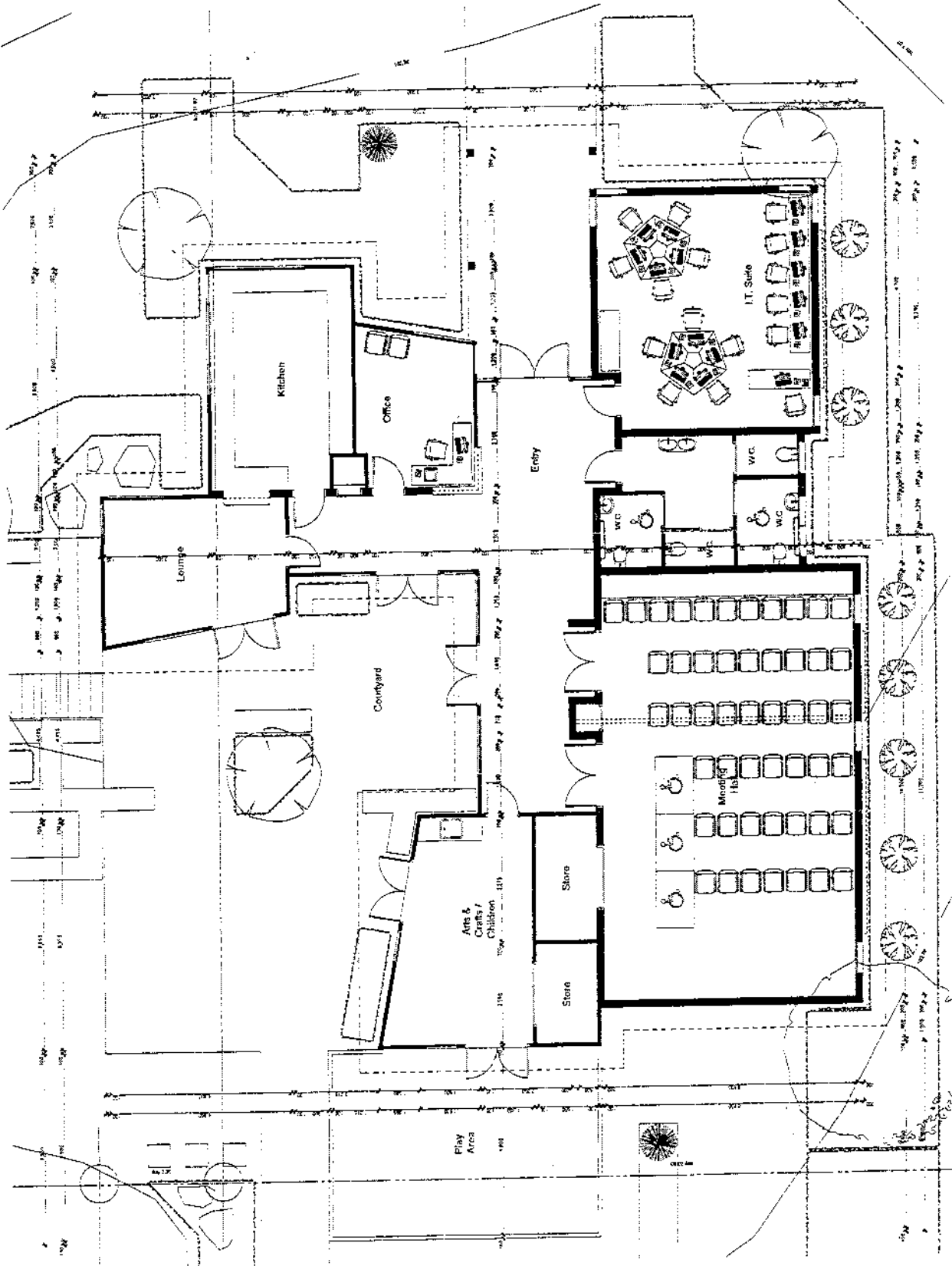


graeme johansen
a r c h i t e c t
s
arch. an.zia.

P.O. Box 21 094
Henderson Auckland
Telephone (09) 817 6284
Mobile 025 814 335

Proprietary Sketch Drawings
At: Cnr Simmonds Drive, &
Brookwood Drive,
For: Waikare City Council.

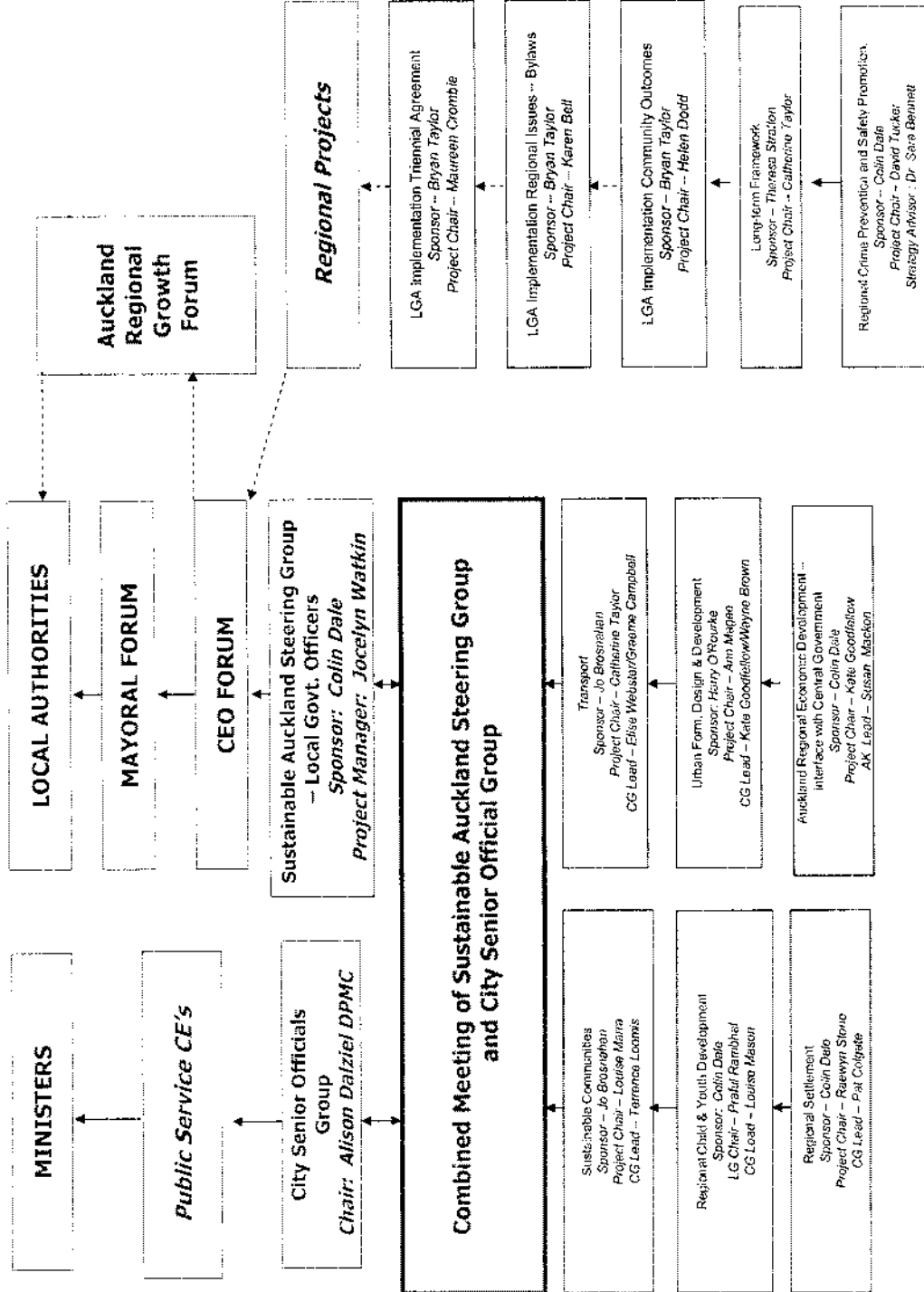
04.109
02



192

Floor Plan Scale 1:50

SUSTAINABLE AUCKLAND DIAGRAM



A3

REPORT TO CEO FORUM

SUSTAINABLE AUCKLAND PROGRAMME OF ACTION

Title : Programme Update – Signature Projects
Reporting from : Colin Dale
Date : 21 May 2004

SUMMARY

The Sustainable Auckland Steering Group, convened by Colin Dale, was initiated in 2003 in response to the Government's *Sustainable Development Programme of Action for New Zealand*. "Sustainable Cities" is one of the four key initiatives in this Programme, and has two stated outcomes:

- Cities as centres of innovation and economic growth
- Liveable cities that support social wellbeing, quality of life and cultural identities

The Sustainable Auckland Steering Group is made up of local and central government officers, who jointly lead a number of work strands under the Sustainable Auckland umbrella. An overview diagram is attached in Appendix 1. With the work strand members, who are representatives from central and local government agencies and community groups, the Sustainable Auckland Steering Group was to achieve the following:

- i) Prioritise a list of potential projects that the region could work in partnership with central government using pragmatic decision criteria;
- ii) Negotiate a shortlist of signature projects with central government for the joint programme of action and scope these into project briefs with their indicative resources by the end of this financial year (June 2004);
- iii) Review the Auckland-specific provisions of the Local Government Act and make recommendations to central government;

A number of signature projects from each of the Sustainable Auckland work strands have now been selected using agreed criteria:

1. Regional Child & Youth Development – Youth Citizenship; plus one locality based project
2. Migrant Settlement – Regional Settlement Strategy
3. Urban Form Design & Development – three sub projects focussed on specific issues of intensification
4. Transport – rolling out education travel plans (Note: other projects are supporting, rather than signature)
5. Sustainable Communities – locality projects, selected around a sustainable development approach to achieve strong, liveable and prosperous communities.

Joint funding is being sought from both central government and local government, and central government funding will be confirmed in late May. The timelines for the signature projects range over the next 1 – 3 years. Further details are included in Appendix 2. In addition, a number of supporting projects are also being considered.

The Sustainable Auckland programme aims to provide a whole of region/whole of government sustainable approach and will build on many existing programmes to add value in terms of resourcing and the sharing of understanding across central and local government. The Programme will provide support in helping address some of the difficulties of managing the region's growth into the future to achieve sustainable development objectives. Where successful, new ways of working can then developed further for application in other areas.

Officers are currently designing an evaluation framework to ensure learnings are captured at significant stages. However, an overall evaluation of the entire programme and its benefits/learnings

A4

is envisaged in 2005/06, with a funding expectation of approximately \$80,000 - \$100,000. At this point, it is proposed that this sum be apportioned across local authorities and central government, with funds being sought in 2004/05.

The Sustainable Auckland programme will be funded generally within existing local authority budgets and by central government. Central government's contribution will be communicated as part of the budget announcement in late May.

There is growing interest from Local Government New Zealand Metro Sector and in exploring linkages with their priority areas of Transport, Waste, Safe Communities, Economic Development and Settlement.

RECOMMENDATIONS

That the CEO Forum:

1. Endorse the Sustainable Auckland work programme, which is set out in this report and which will be undertaken jointly by central and local government agencies.
2. Note that the Sustainable Auckland programme provides an opportunity to learn new ways of working together that integrates policy development and services in way that gives effect to multiple sustainability outcomes and that overall evaluation will commence in 2005/06 (resources of \$80,000-\$100,000 will be sought in that year).
3. Note that the Sustainable Auckland programme will be funded generally within existing local authority budgets and by central government. Central government's contribution will be communicated as part of the budget announcement in late May.
4. Agree that the Sustainable Auckland programme report biannually to the Auckland region's Councils on the progress of the joint work programme over 2004/05 and 2005/06.

Background

In January 2003, the government produced "*Sustainable Development for New Zealand: Program of Action*" that focuses on four key areas: water quality and allocation, energy, sustainable cities and child and youth development.

This Programme of Action (SDPOA) reflects the government's strong interest in achieving progress on sustainability in a number of areas, particularly those outlined in the Programme itself. The Government's commitment on this issue has also been demonstrated by the inclusion of sustainability concepts in recent legislation, most notably the *Local Government Act 2002*.

Sustainable development is defined in the SDPOA as "development which meets the needs of the present without compromising the ability of future generations to meet their own needs". The concept is, however, given a broader, and arguably more useful, definition as one of the principles in the *Local Government Act*. The Act defines a sustainable development approach as including the following:

- The social, economic and cultural wellbeing of people and communities; and
- The need to maintain and enhance the quality of the environment; and
- The reasonably foreseeable needs of future generations.

As such, achieving the benefits of sustainable development will require a more holistic approach to issues which: takes into account the social, economic, environmental and cultural effects of decisions; encourages participation and partnerships; and, takes a long-term view.

For the Auckland region, a key element of the SDPOA is Sustainable Cities. This deals with the general problems of New Zealand cities, but gives particular emphasis to the challenges the Auckland region is facing in managing its growth into the future. The importance attached to addressing these

A5

challenges is reflected in the decision to make the Auckland region home to signature projects that will be initiated as part of Sustainable Cities under the banner of the Sustainable Auckland programme.

The CEO Forum was briefed on the Sustainable Auckland project in February of this year. The briefing report, which was received by the Forum, outlined the Sustainable Auckland programme and its work strands, and described a number of potential signature projects that were being considered. Since then, the work strands and signature projects have been further developed, which are described in greater detail in Appendix Two.

The Sustainable Cities Auckland Programme

Involvement in the Sustainable Auckland programme is likely to have several benefits for the Auckland region. In addition to their practical outcomes, the programme will provide other avenues, as well as a useful framework, for overcoming a number of difficulties that agencies in the region face in meeting future challenges. These difficulties include:

- a lack of shared understanding about roles and responsibilities within the Auckland region;
- agencies having overlapping responsibilities but often acting alone within individual 'silos';
- the communication gap between central and local government in some areas;
- the lack of mechanisms for developing relationships between agencies; and,
- the lack of a consistent set of policy objectives across central government, local government and communities.

The Sustainable Auckland programme will address some of these difficulties in a variety of ways. It will provide an overarching policy framework and interagency support for a number of the regional projects currently underway that have been included as part of the signature projects. It will also provide opportunities to develop and test new ways for central government, local government and communities to work together to achieve sustainable development objectives. Where successful, new ways of working can then be developed further for application in other areas.

More immediately, the Sustainable Auckland programme will provide a further opportunity to raise awareness, with a receptive central government audience, about the unique challenges Auckland faces in the future. The programme also provides new impetus for central agencies to work with local government and communities to address Auckland issues, some of which may otherwise have been left to the region alone. Moreover, the sustainability policy framework, which has many similarities with Auckland's current integrated planning framework, will provide potential new avenues for Auckland to explain the integrated solutions it is seeking to achieve.

Evaluation

The Sustainable Auckland programme provides a structure for both arms of government to try different ways of undertaking policy work and working with the community to achieve outcomes. The programme provides for some risk-taking and experimentation and it is important to capture and share its relevant learning and conclusions. Officers are currently designing a useful and simple approach to evaluation. Each signature and supporting project will have the means to capture learnings as they progress and it is envisaged that a full evaluation will commence 2005/06. The expected cost of the full evaluation is of the order of \$80,000- \$100,000 and it is proposed that this is apportioned across local authorities and central government with funds being sought in 2004/05.

LGNZ Metro Sector Involvement

There has been a growing interest from other regions in the Sustainable Auckland programme. This has been perceived as an opportunity to share ideas and learn from each other; and an opportunity to influence central government.

More recently the LGNZ Metro Sector, in identifying its work programme priorities, concluded that it would be desirable to have a connection with the Sustainable Auckland programme where there were common priorities. In particular, there was an interest in transport, urban form and in travel demand management. In being responsive to their interest, and in building relationships nationally, a

A6

participant from Wellington City and Christchurch City have been asked to join specific Sustainable Auckland work strand teams (Urban Form, Design & Development, plus Transport.)

Auckland Provisions of the LGA 1974

Initially it was envisaged that these provisions [Growth Forum, IA, WSL] would be considered and reviewed as a set. However the future of Infrastructure Auckland and to an extent the governance and powers of the Regional Growth Forum have been overtaken by the government's review of transport provision in Auckland. This leaves the future of Water Care Services undecided. But with the shortness of available Parliamentary time, it now seems unlikely that this issue will be settled before the next General Election. Advice from the Minister's office is that policy work is scheduled to start sometime in 2005.

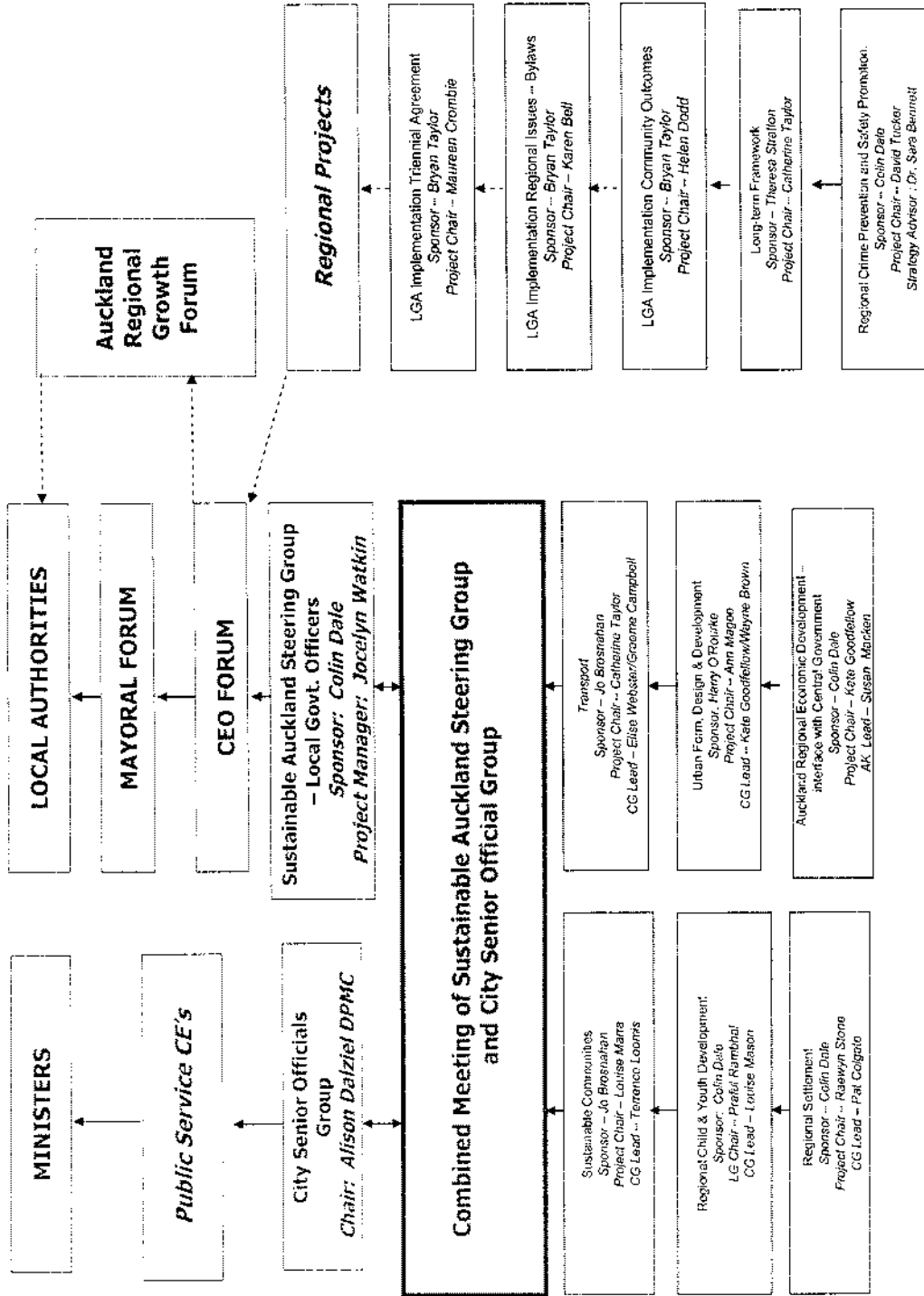
Reporting

Once the budget figures have been announced from central government at the end of May it is proposed to report to all of the Councils in the Auckland region, and biannually thereafter.

A7

APPENDIX 1

Sustainable Auckland Diagram



A8

APPENDIX 2

Further information on signature projects

1. Regional Child & Youth Development

Two signature projects are being developed that will focus on how central and local government can best support long term development for children and young people using evidence based approaches. The process will include learning what works/what doesn't and sharing this information across regional and national levels

The added value that the Regional Child and Youth Project will bring is:

- * more closely integrated work at a national level on Investing in Child and Youth Development (one of the four key areas of the Government's Sustainable Development Programme of Action) and work being undertaken at regional level
- * being able to work collaboratively across the region and sharing information, resources and learnings about what works best to support child and youth development

Project 1: Locality Project

- demonstrate improved outcomes for children and young people, within a selected Auckland community, by applying an evidence based approach and sustainable development principles in the design and delivery of child and youth services in that community by 2005/06

-

Project 2: Youth Citizenship

- this project will increase participation by children and young people across the Auckland region in local democratic decision-making processes by 2005/06

Deliverables: Yr 04/05 – 05/06

Project 1: Locality Project

- identify top 6 issues for children and young people in locality
- develop solutions to improve outcomes in 6 areas based on research and evaluation
- incorporate into agency planning and service development
- apply lessons learnt locally to other areas within the region
- map local services and deficits within the location
- establish collaborative process for local government and central government agencies to improve outcomes
- increase participation of children and young people in local decision making processes
- evaluation framework developed implemented
- Regional Child and Youth development Forum established

Project 2: Youth Citizenship

- each TA has a range of projects which encourage increased participation by children and young people in local democratic processes
- each TA has a "champion" team established
- assess and disseminate best practice tools and resources across the region
- increase number of joint projects between schools and TAs
- evaluation framework implemented

Resources Available/Committed

Project 1: Locality project

- funding for project manager and project funding is being sought through central government budget process

A9

- TA in selected locality site will provide staff and other resourcing to support project as appropriate (to be determined once locality is selected)

Resources Needed/Applied For

Project 2: Youth Citizenship project

- Individual projects within each TA area will be funded by that TA as determined through their individual budget processes
- Funding for a regional co-ordinator is still to be confirmed by central government, but they will be seeking contributions from the TA's to fund a 0.5 position. This is currently under discussion.

Other points for CEO's:

Selection of site by end of June 2004 is critical to ensure implementation is on track (selection is partially dependent on selection of sustainable communities locality sites). Commitment to funding for Regional co-ordinator position for youth citizenship project is desirable. As central government is providing the substantive funding for the locality project, local government is being asked to substantively fund the youth citizenship project.

2. Regional Settlement Strategy

The Regional Settlement Strategy is about providing the support so that migrants can find appropriate permanent employment, stable living environment, and good health and are integrated into NZ society to feel at home and therefore want to stay in the Auckland region.

This signature project adds value by linking migrant communities with the other Sustainable Auckland work strands, particularly in looking at the impacts of settlement such as with Urban Form, Design and Development. With the work strand of Sustainable Communities the focus would be on settlement of migrants and social cohesion.

Deliverables/Timeframe

a) Current Year 03/04

Completed development of a Terms of Reference, secured funding, appointed a Project Manager and in the process of getting signatures to the project agreement.

b) Yr 04/05

Initial draft strategy by September 2004
 Revised draft by December 2004
 Regional Settlement Strategy adopted by July 2005

Resources

a) Available/Committed

\$30,000 from Auckland Regional WINZ;
 \$37,000 from all Auckland TLAs and the Auckland Regional Council, via CEO Forum
 \$140,000 from Ministry of Economic Development Regional Initiative Fund (RIF)

3. Urban Form Design & Development (UFDD)

This project has all three sub-projects focused on the specific issues of the quality of urban development within the Auckland metropolitan limits. It will build on and expand work undertaken in 2003/04 on the national Urban Design Protocol, and the built environment statutory framework.

Extensive research internationally demonstrates that cities can be built more sustainably by putting in place growth strategies, guidelines and in some cases regulations which ensure the physical aspects of urban form, particularly from an energy efficiency and water use point of view. This work strand will enable the Auckland region to move from a current relatively low level of built environment efficiency and effectiveness to levels that are closer to those currently set for key Australian cities (Melbourne and Sydney). As is now widely acknowledged, efficiency of built environment infrastructure is a key aspect of modern economic growth which is city focussed.

AIO

This work strand adds value to the existing programme by:

- Ensuring a consistent approach to sustainability elements of statutory change (eg: RPS).
- Ensuring Auckland region input into central government led initiatives (eg: Design Protocols).
- Providing a mechanism for transfer of best practice to economise on resources required for innovation.
- Accumulating adequate resources to ensure new initiatives are developed in a robust manner that involves key stakeholders
- Extracting maximum value from FRST funded research and which complements the region's programme to improve the resource use (especially energy use) of the built environment.

Signature Projects

a) Short term improvements

- Improving the quality of the built environment including intensification mechanisms
- Achieving better integration of Auckland's strategic land use documents

b) Long term improvements

- Establishing guidelines and tools to improve the quality of the built environment including intensification mechanisms

c) Demonstration Projects

- To show sustainability best practice buildings and urban development. They will range from small to larger scale, from simple to complex examples. While initially there will be a focus on built examples, it is intended also to include projects from design to construction phases. The Projects are spread throughout the Auckland region. This work strand (UFDD) will link with the Sustainable Communities work strand locality projects, where collaboration is required between a range of parties including local government and central government, communities and researchers to achieve sustainability outcomes. In most work streams, new proposals will be trialled as pilot projects.

Resources

a) Available/Committed

Short term improvements: Council resourcing (eg:staff input) and budgets / funding provided for in draft LTCCP / Annual Plans, predominantly as part of regional growth strategy, building statute, intensification, urban design and development and regulatory programmes.

Long term improvements: project funding will primarily enables research to be undertaken on a framework / standards for sustainable building.

Demonstration projects: project funding focus will be on developing transferable templates regarding the sustainability components of public building.

b) Needed/Applied for :

]Funding from central government to support the research phase of sustainable urban / neighbourhood and building programmes and to assist with programme management.

Central Government:

Draft Ministry budgets provide for Urban Design Protocols including implementation, Building statute / code development and implementation, Housing strategy completion and implementation.

FRST research projects on housing, subdivision engineering, and low impact urban design will feed into the UFDD workstream over the next 2-5 years.

Other points for CEO's

The signature project team is mindful of the need to achieve the maximum alignment with existing or projected region wide processes including the regional growth strategy and regional and territorial authority LTCCP processes. The Team also sees the desirability of developing clear linkages to the Metro Sector sustainability programme.

All

4. Transport

This work strand adds value to the existing programme by:

- encouraging a more consistent approach to sustainability in transport projects by both central and local government participants.
- Providing a conduit to share best practice in the region and to other regions. E.g. the LGNZ involvement
- Providing Auckland regional input into central government led policy formulation.

The work strand also provides a structured, sustainable approach to developing a whole of government to whole of region approach for the school travel planning programme. This will also include the inputs from other regions.

Signature Project

a) Accelerate School Travel Plans

Supporting Projects

- a) Integration Transport and Urban Form
- b) Air Quality (reduce bus fleet emissions)
- c) Passenger Transport Procurement

Deliverables

a) Yr 03/04:

Primer on Travel Demand Management and School Travel Plans

b) Yr 04/05

1. Workshop on urban form/transport (based on a think-piece)
2. School Travel Plans (31)
3. Monitor bus emissions, design retro-fit trial
4. PT procurement problem definition paper (by local government)

c) Yr 05/06

1. Paper on improvements for both arms of government regarding urban form/transport link
2. School travel plans (36)
3. Monitor bus emissions and trial 10 buses
4. Paper on investigation into regulatory barriers for PT procurement and evaluate options

d) Yr 06/07

1. Action plan improvements for both arms of government re urban form/transport link being implemented
2. School travel plans (36)
3. Monitor bus emissions and report on trial
4. Implement any changes to the PT Procurement regime

Resources

a) Available/Committed

The Transport work strand will be funded generally within existing local authority budgets and by central government. Central government's contribution will be communicated as part of the budget announcement later in May. This funding will be bridging until 2006/07 when the funding will be from Transfund to ARTA.

Other points for CEO's

Note that the LGNZ Metro Sector Group will also be involved in the work on school travel plans and urban form and transport. The school travel plans may have a link to the Sustainable Communities location projects.

5. Sustainable Communities

The vision of the Sustainable Communities work strand is "to achieve strong, liveable and prosperous communities in Auckland through a sustainable development approach".

A12

Signature Projects

Sustainable communities will conduct projects in 2-3 geographic areas in the Auckland Region. These will be based on existing projects, where the local authority has resources committed.

The goal is to develop a locally relevant sustainable development framework, models and methods that support communities in planning and implementing their own sustainable development practices.

Sustainable Communities aims to achieve several specific outcomes:

- Informed, involved and connected communities who assume ownership and take practical steps to achieve their own sustainable development
- A community-level framework is in place for defining, identifying and measuring practical sustainability actions
- Development and dissemination of useful models, methods, tool and lessons for facilitating community sustainable development outcomes planning and practice.
- Inputs to wider community outcomes and LTCCP processes of TAS and ARC that reflect pilot community priorities and interests
- Increased effectiveness of central and local authority collaboration through adopting a learning approach to coordinating interventions to support community outcomes and sustainability initiatives.

Value Added, and Sustainable Development

The project will pursue a value-added strategy, targeting what research and experience has identified as key enablers of strong, sustainable communities and building on existing local initiatives. The value-added components the SC project brings to pilot communities are:

- Methods for promoting community involvement, and identification of shared perspective and values
- Community capacity-building (leadership, social capital, sustainable development facilitation skills and tools)
- Facilitating Information access, analysis and communication
- Brokering relationships and maintaining supportive partnerships
- Enabling access to necessary resources and strategic investment in community outcomes
- Participatory action-research (learning collaboration, evaluation and dissemination of learnings)

Deliverables/Timeframe

a) Current Year 03/04

- Confirm pilot project locations, based on agreement with all key parties involved, the suitability of the location and existing activities to be broadened into a signature sustainable development project, the timing of the existing projects in relation to that of Sustainable Communities.

b) Yr 04/05

- Community pilot project collaborative partnerships established.
- Community pilot project work plans, identifying value-added components for each community and measures, with joint statements of intent/MOUs, and full involvement of other work strands.
- Participatory evaluation plans developed for pilot communities and project on
- Negotiated arrangements with TAs on linking pilot community outcomes/planning to the Council's outcomes/LTCCP process
- Community workshops for outcomes identification, prioritisation and action plans; and feedback to TAs
- Interim reports on lessons, methods and good practice regarding community SD outcomes identification & planning procedures.
- Interim report on progress in achieving agreed community capacity building objectives for each pilot.
- Input to TA and ARC LTCCPs

c) Yr 05/06

- Community sustainable development actions
- Ongoing participatory evaluation
- Interim report on progress.

A13

d) Yr 06/07

- Participatory evaluation of models, methods and lessons – final write-up
- Measuring SD outcomes
- Reporting and dissemination

Resources

a) Available/Committed

- Significant commitment expected from Department of Internal Affairs, which will be communicated in the central government budget
- 1 FTE committed by ARC, as co-manager of locality pilots
- Project Directors' time – ARC and DIA
- Staff time – Landcare research.
- Staff time from TA's in proposed localities (one of the selection criteria is that there is an existing project, which is already resourced, with existing local council involvement and funding.)

b) Needed/Applied for

- Commitment of staff time from agencies involved in locality pilots. (To be based on final selection)
- Additional funding, to cover community engagement costs, and communications materials.

A14

SAFE WAITAKERE CRIME PREVENTION STRATEGY
2004/07

Waitakere Crime Prevention Strategy 2004/07	2
Background and Context	2
Council Review of Crime Prevention Strategies and Relationships.....	2
Crime Prevention Unit	2
NZ Police.....	3
Crime and Safety in Waitakere City	3
Crime Prevention Projects Leader.....	4
Key Accountabilities:	4
Crime Prevention Reference Group	5
Terms of Reference.....	5
Membership.....	5
Council/Police City Safety Liaison Group	6
Purpose.....	6
Membership.....	6
Output 1: Identification of Crime Issues and Trends	7
Output 2: Council's Strategic Policies and Planning, Operations and Services..	7
Output 3: Collaboration with Government and Not-For-Profit Sectors	8
Output 4: Community Consultation/Participation.....	8
Output 5: Development of Effective Strategies and Interventions	9
Appendix I	10

Waitakere Crime Prevention Strategy 2004/07

Background and Context

Council Review of Crime Prevention Strategies and Relationships

During 2003, Council undertook a review of its crime prevention strategies and relationships. At the August meeting of the City Development Committee, the following recommendations were approved:

1. That Council notifies the Waitakere Safer Community Council Trust that it does not intend renewing the contract for services after 31 October 2003.
2. That Council creates a new position within the *Safe Waitakere* 'family', using funding from Council and Crime Prevention Unit.
3. That Council invites key partners to set up a Crime Reduction Reference Group to provide information and support to the new position. This group could include Council, Police, Maori and Pacific Island representation, and specific community agencies with a crime reduction focus.
4. That from 1 November 2003 – 30 June 2004, the new position will:
 - Undertake a strategic planning exercise to develop a Crime Reduction Business Plan to submit to Crime Prevention Unit for funding for F2004/05
 - Coordinate the setting up of the Crime Reduction Reference Group
 - Coordinate the implementation of the Council/Police Memorandum Of Understanding
 - Represent Council on the local, district and regional planning groups
 - Contribute policy advice and specialist expertise to Council
 - Participate in *Safe Waitakere*, Wellbeing Network and Collaboration Project
 - Maintain and support community networks and projects in accordance with the 2002/03 Business Plan, and in particular with Maori, Pacific Island and youth.
5. That Council staff support the process of disestablishing the funding contract with Waitakere Safer Community Council Trust as at 31 October 2003, including:
 - Identifying and addressing issues concerning the management of assets and liabilities, funds, documents and records
 - Managing the transition of support and funding to on-going community projects

This comprehensive set of recommendations sets out a new structure for the planning and implementing of crime reduction strategies in the city.

Crime Prevention Unit

In 2003, at the same time as Waitakere City Council was undertaking its own internal review, the Crime Prevention Unit undertook a major review of the Safer Community Council Network – *Review of the Safer Community Council Network: Future Directions*. The outcomes signal significant changes in the way Crime Prevention Unit will function, and sets out criteria for the on-going relationships between the Unit and the Territorial Local Authorities.

Key elements in the new Crime Prevention Unit policy are:

- Crime Prevention Unit will invest greater financial resources in metropolitan crime prevention activities
- On-going partnership arrangements will be contingent on local government taking responsibility for management, coordination and governance (by Council Committee) of local crime prevention efforts

A16

- Funding arrangements will be:
 - negotiated directly with individual metropolitan Local Authorities in accordance with jointly agreed crime reduction outcomes
 - provided on a longer-term (three year) basis under more flexible terms and conditions

NZ Police

The relationship between Waitakere City Council and the Police has been formalised through the signing of a Memorandum of Understanding that outlines the areas of shared interest concerning crime and community safety, and sets out protocols for communication, information sharing and joint planning.

The North Shore/Waitakere/Rodney Police Business Plan 2003/04 states "the strong interaction with...Waitakere City Council...will flourish this year, such that Police will become engaged in joint crime and crash reduction initiatives on a scale not experienced before in this District".

Crime and Safety in Waitakere City

There has been considerable media attention given to the issues and perceptions around crime and safety in Waitakere and in particular to the emerging problems associated with methamphetamine.

This section will contain the most up to date Police crime statistics, and any other research or data that contributes to the analysis of crime and perceptions of safety in Waitakere City.

Crime Prevention Projects Leader

A key component in the development and implementation of the Waitakere Crime Reduction Strategy is the appointment by Waitakere City Council of the Crime Prevention Projects Leader, located within the *Safe Waitakere* team, Strategic Partnerships and Advocacy Group, Strategy and Development Unit.

Key Accountabilities:

Strategic Planning and Advice

- Undertake strategic planning – including the development implementation and monitoring of the Crime Prevention/Reduction Business Plan
- Represent Council on the local, district and regional Crime Prevention/Reduction planning groups
- Provide strategic advice and specialist expertise to Council as required

Relationship Management and Community Engagement

- Coordinate the implementation of the Council/Police Memorandum of Understanding
- Coordinate the Crime Reduction Reference Group and Police Liaison Group
- Participate in *Safe Waitakere*, Wellbeing Network and Collaboration Project
- Maintain and support community networks and projects in accordance with the WCRS Business Plan.

Project Management

- Oversee the progress/implementation of the Safety and Access by Design Project
- Manage the design and implementation of projects arising from the Business Plan

Crime Prevention Reference Group

This group focuses on the development, implementation and monitoring of the Crime Prevention Strategy.

Terms of Reference

To assist Council to set the Strategic Direction

- Determine the strategic direction, priorities and projects/activities
- Oversee the planning and implementation processes for the programme
- Monitor the achievements of projects/activities against performance indicators

Advice – provision of

- Professional and operational expertise
- Data, analysis of information/data
- Guidance on methods and processes
- Problem-solving

Partnership

- Facilitate the development of partnerships with statutory and community agencies and groups
- Explore and enable access to additional funding and resources

Discretionary Funding

- Oversee the allocation of discretionary funds to crime prevention projects in accordance with the funding policy

Membership

The Reference Group is comprised of representatives of key government and community agencies that have a crime prevention/reduction focus, together with members representing particular populations within the community – Maori, Pacific peoples, children and youth.

Waitakere City Council

- Councillor representative
- Council officers

Government agencies

- Ministry of Justice
- NZ Police
- Corrections
- Child Youth and Family
- Courts

Community Agencies

- West Auckland Neighbourhood Support
- Victim Support
- WAVES

Community Populations

- Maori – Te Taumata Runanga
- Pacific Peoples – Pacific Island Advisory Board
- Children and youth

Council/Police City Safety Liaison Group

Purpose

The City Safety Liaison Group operates as an immediate point of reference for crime and community safety issues as and when they arise in Waitakere. The group assesses, informs and makes recommendations on particular strategies and actions.

Membership

Membership of the group fluctuates according to the issues being addressed, with additional staff from both organisations being involved as required. The group comprises the following members (or their nominated replacements) from Council and the Police:

Council

- Michael Mills – Crime Prevention Projects Leader
- Shannon Hanrahan – Safe Waitakere Alcohol Project
- Tina Meharry – CAYAD project coordinator
- Warren Cornor – Council Security Manager
- District Licensing Inspector
- Leisure Services
- Parks Assets Management
- Public Affairs

Community Boards

- Representative(s) from each Community Board

Police

- Brian Loudon, Community Relations
- Bryony Brown, Intel Analyst
- Jason Loye, Liquor Licensing
- John Allen, Youth Services

Functions

The group convenes to discuss matters that are of particular concern between Police and Council. These matters may arise from any of the parties, including staff from units other than those in the core group. Matters ordinarily dealt with may include:

- Emerging "hot spots" eg Titirangi vandalism and drunken behaviour
- On-going problems eg tagging
- Particular sites/localities eg car parks, internet cafes
- Planning for events
- Opportunities for proactive policing eg NHS, CCTV
- Input into and evaluation of plans and proposals eg Glen Eden youth pool club

Process

The group usually meets monthly and any person can place items on the agenda through one of the core group. The Crime Prevention Projects Leader is convener of the group. A short statement or report about the issue(s) is furnished to the convener for distribution prior to the group meeting. Ideally the author should attend the group meeting to speak to the matter and to engage in the discussion.

Matters before the Group will be considered and the outcomes communicated to the originator and all participants. Where appropriate, an Action Plan will be developed indicating tasks, timeframes, resources and the person(s) responsible. Outcomes may include: securing the involvement of other persons/parties; establishing project team(s); preparing reports/recommendations; seeking further information/research; authorising specific actions.

Crime Prevention Strategy

Refer Appendix I

Output 1: Identification of Crime Issues and Trends

This section contains mechanisms for the information-gathering and analysis of crime patterns/trends. The information will enable the development of evidence-based strategies and interventions, and provide the basis/rationale for resourcing of community-based crime prevention initiatives.

Outcomes:

- Identification of crime patterns and trends
- Early indication of new/emerging crime issues
- Prioritisation of crime activity in accordance with the National Crime Reduction Strategy; local (and regional) priorities as set out in business plans/strategies; political and community perspectives

Mechanisms:

- Joint Strategic Planning with Police (as per MOU); and
- Other agencies (Crime Reduction Reference Group); and
- Information-sharing, research and analysis; and
- Community consultation (locality, 'interest', populations etc)

Output 2: Council's Strategic Policies and Planning, Operations and Services

Council systems and procedures reflect a consistent and clearly articulated commitment to crime prevention and community safety.

These objectives are also set out as *Safe City*, one of the *Five Priorities* in the Long Term Council Community Plan.

Areas of social policy eg prostitution law reform, gambling and sale of alcohol, have significant crime/safety implications.

As custodian of the public realm, Council acknowledges its crime prevention and community safety role in planning, developing and managing the streets, parks, town centres and community facilities in the city.

Planning for population growth management – urban intensification, transportation, and infrastructure requires careful attention to crime prevention and in particular to people's perceptions of personal and community safety.

Council regulatory and compliance services have a direct impact on the quality of life and amenity values in the city.

Outcomes:

- Council policies and plans incorporate crime prevention and community safety principles and outcomes
- Council utilises expert input and analysis in its planning and development processes
- Council leads by example in the provision of safe and accessible public buildings, facilities and localities

Mechanisms:

- Council reviews and audits its systems and procedures to ensure a consistent approach to crime prevention and community safety
- Council engages with people and organisations that have skills and expertise in the application of crime prevention and community safety principles and practice
- Council monitors its performance in reducing crime and improving perceptions of community safety

Output 3: Collaboration with Government and Not-For-Profit Sectors

Council accepts that it has a leadership and facilitation role with respect to crime prevention and community safety, but acknowledges that no single agency can achieve significant outcomes in isolation. This section identifies the primary and ancillary agencies that have a crime prevention/reduction focus, and defines the nature of Council's relationships with these agencies. This will inform decisions concerning the formation of partnerships, funding agreements and other forms of collaboration.

Outcomes:

- Government and community-based agencies work together efficiently and effectively to achieve crime reduction outcomes

Mechanisms:

- Formal agreements such as contracts, Memorandum of Understanding, partnerships, Reference Group
- Project teams, focus groups, Council/Police City Safety Liaison Group
- Collaborative mechanisms for networking, and sharing of relevant information
- Regional TLA/Police strategic project

Output 4: Community Consultation/Participation

Crime happens in geographic locations, and more frequently amongst certain populations than others. This section identifies mechanisms for engaging communities -- in particular, those communities (localities, 'interest', populations etc) that are most likely to be the victims and/or the perpetrators of crime.

The project also has an obligation to the wider community to inform and consult on crime and safety matters. By utilising a variety of mechanisms, the general public can become more aware of, and responsive to crime prevention opportunities.

Outcomes:

- The communities that are most adversely affected by crime (victims and perpetrators) participate in the development and implementation of crime reduction strategies
- The general public is more aware of and responsive to crime and community safety matters

Mechanisms:

- Formal consultative frameworks
- Informal networks
- Specific targeted research/consultation/participation

- Use of media
- Dissemination of information through existing community networks – such as Neighbourhood Support
- Public Forums
- Participation in other community meetings

Output 5: Development of Effective Strategies and Interventions

This section elaborates on how the input of information and the participation of partners and community are managed and monitored to generate innovative and effective crime reduction strategies.

Outcomes:

- Crime reduction strategies, funding decisions and project implementation will be in accordance with agreed priorities and policies
- Strategies and projects are effective in achieving crime reduction outcomes

Mechanisms:

- The Crime Prevention Strategy – Business Plan reviewed annually
- Strategies and projects monitored and evaluated to ensure they are achieving the planned outcomes
- 'Best Practice' approach, drawing on research, implementation factors, changing considerations, unforeseen occurrences
- Positive feedback from partners, agencies and communities

Appendix I

Output 1
Identification of Crime Issues and Trends

Outcomes	Activities	Timeframes	Parties internal/external	Skills/Resources
Identification of crime patterns and trends	Joint Strategic Planning with Police (as per MOU);	Annual	Regional local authorities Police – regional, District and Waitakere Area	Statistics, other forms of data from internal and external sources
Early indication of new/emerging crime issues	and other agencies (Crime Prevention Reference Group);	Quarterly	Police, Corrections, CYF, Courts, WANS, VS, WAVES, Maori, Pacific peoples, children and youth	Access to Council services eg GIS, Admin support, financial management services
Prioritisation of crime activity in accordance with the National Crime Reduction Strategy; local (and regional) priorities as set out in business plans/strategies; political and community perspectives	Information-sharing, research and analysis; Community consultation (locality, 'interest', populations etc)	On-going	Identified communities	Specialist analysis Community development

A24

**Output 2
Council's Strategic Policies and Planning, Operations and Services**

Outcomes	Activities	Timeframes	Parties internal/external	Skills/Resources
<p>Council policies and plans incorporate crime prevention and community safety principles and outcomes</p> <p>Council utilises expert input and analysis in its planning and development processes</p> <p>Council leads by example in the provision of safe and accessible public buildings, facilities and localities</p>	<ul style="list-style-type: none"> ▪ Council reviews and audits its systems and procedures to ensure a consistent approach to crime prevention and community safety ▪ Council engages with people and organisations that have skills and expertise in the application of crime prevention and community safety principles and practice ▪ Council monitors its performance in reducing crime and improving perceptions of community safety 	<p>On-going, and in Annual and LTCCP Reporting</p> <p>On-going</p> <p>Annual</p>	<p>Departmental managers</p> <p>Internal and external partners</p> <p>Departmental managers, special projects leaders</p>	<p>Audit/review budget and skills within programmed work</p> <p>Provision made in project budgets for consultation and specialist input</p> <p>City Safety indicators, specialist monitoring</p>

**Output 3
Collaboration with Government and Not-For-Profit Sectors**

Outcomes	Activities	Timeframes	Parties internal/external	Skills/Resources
Government and community-based agencies work together efficiently and effectively to achieve crime reduction outcomes	<ul style="list-style-type: none"> Formal agreements such as contracts, Memorandum of Understanding, Reference Group, partnerships Project teams, focus groups -- including Police/Council Liaison group Collaborative mechanisms for networking, and sharing of relevant information 	<p>CPU -- three year contract</p> <p>Police MOU -- reviewed annually</p> <p>Reference Group -- meet minimum four times a year</p> <p>Project teams according to implementation plans</p> <p>Liaison group monthly</p> <p>Utilising existing networks and forums</p>	<p>Crime Prevention Unit</p> <p>NZ Police -- District/Area</p> <p>Other local authorities</p> <p>Corrections, Courts, Child Youth and Family</p> <p>West Auckland Neighbourhood Support, Victim Support, WAVES</p> <p>Collaboration and Community Wellbeing networks and forums</p>	<p>Contract management</p> <p>Relationship management</p> <p>Meeting facilitation, project support</p>

Output 4

Community Consultation/Participation

Outcomes	Activities	Timeframes	Parties internal/external	Skills/Resources
<p>The communities that are most adversely affected by crime (victims and perpetrators) participate in the development and implementation of crime reduction strategies</p>	<ul style="list-style-type: none"> ▪ Formal consultative frameworks ▪ Formal and Informal community networks 	<p>According to plans and timetables eg Annual Plan, LTCCP consultation</p> <p>According to meeting schedules</p>	<p>Te Taumata Runanga, Pacific Island Advisory Board, Youth Council</p> <p>Advocacy/special interest groups</p> <p>WADCOSS, Collaboration and Wellbeing networks</p>	<p>Relationship management</p> <p>Community development</p>
<p>Raise and improve community awareness and responsiveness to crime and safety matters</p>	<ul style="list-style-type: none"> ▪ Specific targeted research/consultation/participation ▪ Use of media ▪ Dissemination of information through existing networks ▪ Public Forums ▪ Other community meetings 	<p>On a needs basis</p> <p>In response to emerging issues and needs</p>	<p>Council and external researchers/analysts</p> <p>Media, partner-organisations, community networks</p>	<p>Research and analysis</p>

**Output 5
Development of Effective Strategies and Interventions**

Outcomes	Activities	Timeframes	Parties internal/external	Skills/Resources
Crime reduction strategies, funding decisions and project implementation will be in accordance with agreed priorities and policies	<ul style="list-style-type: none"> The Crime Reduction Strategy – Business Plan reviewed annually 	Business objectives reviewed annually	<p>Crime Prevention Unit</p> <p>City Development Committee</p>	<p>Strategic planning</p> <p>Relationship management</p>
Strategies and projects are effective in achieving crime reduction outcomes	<ul style="list-style-type: none"> Strategies and projects monitored and evaluated to ensure they are achieving the planned outcomes 'Best Practice' approach, drawing on research, implementation factors, changing considerations, unforeseen occurrences Accountability to Council, Funders, key stakeholders and the wider community 	<p>On-going in accordance with project plans</p> <p>On-going</p> <p>Reviewed annually and utilising Council and other community surveys</p>	<p>Reference Group</p> <p>Internal monitoring, project teams</p> <p>External evaluators eg SHORE</p>	<p>Leadership and facilitation</p> <p>Monitoring and evaluation</p>

Waitakere Ranges
Postal Recreation Survey 2004
Draft Report

May 2004

Survey carried out by:



Auckland
Regional Council
TE RAUHITANGA TAIAO

Data analysed and report
prepared by:



Rob Greenaway & Associates

A29

Waitakere Ranges postal recreation survey 2004

May 2004

Draft Report

Contents

1.0 Executive Summary	3
2.0 Error.....	5
3.0 Results	6
3.1 Demographics	6
3.2 Activity	8
3.3 Location.....	12
3.4 Conflicts.....	14
3.5 Motivations and values.....	19
3.6 Improvements, reactions to new developments	23
3.7 Waitakere City.....	29

Appendix one: The questionnaire

1.0 Executive Summary

This report summarises the findings of a postal survey of visitors to the Waitakere Ranges area over summer 2004. XXX questionnaires were posted to members of the xxx address list and 241 valid responses were received. Of those, 13 had not visited the Waitakere Ranges in the prior 12 months and so only answered part of the questionnaire (excluding questions relating to use of the Ranges).

1. **Demographics.** The respondent profile generally paralleled that of the nation for age and gender. More respondents were in full-time employed than the national average (56% compared with 37%). The results are skewed towards the NZ European / Pakeha ethnic group (89% in the survey compared with 76% for New Zealand). Almost half of the respondents were from Waitakere City.
2. **Activity.** Walking and tramping were respondents' main activities, although there is no means of differentiating these activities (a tramp to some is a walk to others). Trampers were more commonly female (62%). Swimming and walking were the main secondary activities. Seventy-five percent of respondents had been visiting the park for more than a decade. On average, just over 70% of respondents' total time invested on their main activity over the 'past 12 months' was spent in the Waitakere Ranges. This is a high level of 'loyalty' but may be a result of the sample technique. Two thirds of respondents do more than one activity in the Ranges.
3. **Location.** Over a quarter of respondents described their use of the Ranges as occurring 'all over' them or at 'various' locations. Popular named sites included Piha, Cascade and Karekare. Almost 50% of trampers used the descriptive 'all over', while walkers tended to be more site-specific. The Hunua Ranges was mentioned most often as an alternative location for respondents and was especially popular with trampers. Other ARC regional parks featured highly as alternatives.
4. **Conflicts.** Fourteen percent of interactions with other activities were reported to be negative. This is high compared with other studies, but again may reflect the survey sample technique. Dog walkers received the most negative interaction responses, resulting mostly from dogs being off the lead.
5. **Motivations and values.** Respondents were asked why they visited the areas they identified in the Waitakere Ranges. The visual appeal of the area (grouped under 'beauty'), its accessibility, flora and fauna and peacefulness were the most common responses. In terms of values, bush, the natural environment and peacefulness topped the list, although if the responses 'wilderness', 'isolation', 'remoteness', 'uncrowded' and 'solitude' are combined they feature highly as a group. 'Too many visitors' and various forms of development were the greatest threats to these values.
6. **Improvement and reactions to new developments.** Respondents were asked to identify anything that would improve their experience of the Waitakere Ranges. Track maintenance (improved) was the top concern, followed by animal and plant pest management and providing mountain bike access. The majority of respondents (65%) felt commercial activities within the Ranges were acceptable if they were 'limited and controlled'. Mountain biking in the Waitakere Ranges was supported by 58% of

respondents. Respondents were asked, if they supported mountain biking, where should it occur. Very few named specific locations and the majority sought a low conflict location.

7. **Housing development.** Two questions were asked regarding Waitakere City Council's interest in the appropriate level of housing on private land surrounding the Ranges. Almost two-thirds of respondents felt private development surrounding the Ranges adversely affected their enjoyment of the park. There was less agreement as to whether the level of control on development on surrounding private land was adequate, with fewer than half the respondents believing not. Most concerns focused on visual impact, cats and dogs, noise and introduced plant pests – and the control of these impacts.

WAITAKERE CITY COUNCIL



Auckland Regional Council
TE RAHUITANGA O AAO

14 July 2004

16 JUL 2004

Kim Morresey
Waitakere City Council
Private Bag 93109
Henderson
Waitakere City

Vidaighe House, 21 Pitt Street
Private Bag 99 012, Auckland
New Zealand
DX CP 28 038 POU SF
Telephone +64 7 366 2000
Facsimile +64 7 366 2165
www.ar.govt.nz

Dear Kim,

Waitakere Ranges Regional Parkland Visitor Study

The Auckland Regional Council will soon be considering a draft Visitor Study that has recently been completed for the Waitakere Ranges Regional Parkland. Auckland Regional Council (ARC) would like to formally request Waitakere City Council's (WCC) feedback on the findings of the Study.

File Ref

The draft Study is due to be considered by ARC's Parks and Heritage Committee on 11th August 2004. At that time the Study can be sent to you for consideration. Your feedback is requested by 20th August 2004. WCC comments will be considered prior to the adoption of the final study on 15th September 2004.

Some WCC staff and members of the Waitakere Ranges Protection Project, Project Control Group were involved during the development of the Study. I have attached a flyer that was presented at one of the Waitakere Ranges Protection Project meetings at the inception of the project. This flyer gives an overview of the project.

In general terms the findings of the study indicate:

- a need for ARC to improve the quality of information communicated to local communities and stakeholders around the Parkland (greater transparency),
- public perceptions about capacity of; and tolerance to change in use and management of; the parkland,
- areas for improvement in infrastructure relating to growth, security and safe discovery of the Parkland.
- the need to build a closer working relationship with Waitakere City Council in relation to Park infrastructure and communication with stakeholders.

The Study's was conducted by Global Leisure Group Ltd, and in particular Mr Rob Greenaway who specialises in open space planning. Mr Greenaway has put forward a number of recommendations leading from the findings of the Study. The Study will be implemented in a variety of ways that are likely to include a variation to the Regional Parks Management Plan and some joint planning work with Waitakere City Council.

Thank you for pursuing input from your Council. I will forward the draft document to you on 11th August and look forward to your feedback.

Yours sincerely

Jane Aickin
Recreation Strategy Manager

A33

Chief Executive	
Corporate Services	
City Services Yoselle	
Consultancy Services	
ECU - WATER	
Strategic Group	
Government Services	
Public Services	

2003 COMMENDATION AWARD WINNER



Waitakere Ranges Regional Parkland Visitor Study - Project Overview

Background

This project responds to rising sentiment among some community groups and environmental groups that:

- The values of the Waitakere Ranges are being eroded by incremental and uncontrolled development;
- The Waitakere Ranges Regional Parkland (Parkland) is on the brink of being over used and use is being promoted without any strong policy framework in place to prevent it being 'loved to death'; and
- Inappropriate use of the Parkland is being permitted (particularly commercial use).

On 11 September 2002, following a deputation from the Ark in the Park community group, the Auckland Regional Council (ARC) Parks and Heritage Committee resolved:

That staff report back to the next Parks and Heritage meeting with options as to how a visitor strategy for the Waitakere Ranges Regional Parkland could be progressed.

Purpose of project

To establish a community vision for the Parkland and recommend management actions that will support that vision. This includes:

- Establishing local and regional values attributable to the Parkland (particularly recreation values, as this is an area about which little is known and the point of greatest controversy. Ecological, cultural and landscape values will also be captured largely from existing material and some from community research).
- Review the existing visitor management framework to establish if it is or can be an effective tool for providing for a degree of equitable regional access to the benefits of the Parkland (social, cultural, environmental, economic).
- Review the type and level of recreation activities that can be sustained in the Parkland. Activities reviewed shall include mountain biking, events, and commercial activities.

A34

Consultation

Community consultation is the core of the exercise and must be managed to ensure a good breadth and depth of analysis is completed. There are three key consultation stages:

1. **Flyer** - The first stage will be to produce a flyer to raise awareness of, and communicate the purpose of the Visitor Study (distributed late October)
2. **Questionnaire** - The second stage will be to produce and roll out a questionnaire. This will run over summer to get quantitative regional input to the project/s.
3. **Focus groups and interviews** - The most critical stage will be 10 'stratified focus groups' and 15 key informant interviews. The focus groups are most likely to be segregated by area of interest (recreation (often in subgroups), education, local residents, science and so on). This ensures a good depth of discussion and is more likely to result in each group feeling they have had a good level of input (rather than arguing or being drowned out by particular advocacy groups).

Overlap with WRPP

Parallel with this, Waitakere City Council (WCC), in partnership with ARC, has initiated a project to look at the values of the wider Waitakere Ranges area (particularly the townships and foothills around the Parkland) and review mechanisms in place to protect those values.

Officers have met on several occasions to discuss the overlap between the projects. Although the timeframes are similar, the WRPP is running consultation and focus groups a month or two ahead of the Visitor Study. However, it has been agreed that the projects can readily share contacts and include relevant questions in respective questionnaires and focus groups.

A35