

Survey data

Table 1: Streets with complete records of trees planted 1994-2007

Year	Street name	Species name	Number of trees planted	Number survived	Percentage survival (%)	Condition rating (rounded)	
1994	West Harbour Drive	<i>Alectryon excelsus</i> , <i>Prunus spp.</i> ,	50	48	96	3/5	
		<i>Metrosideros excelsa</i>					
		<i>Metrosideros excelsa</i>					
1995	Kingsway Road	<i>Alectryon excelsus</i>	52	52	100	1/5	
	Starforth Place	<i>Prunus spp.</i>	27	32	84	3/5	
1997	Imperial Place	<i>Prunus spp.</i>	30	20	67	3/5	
	Cedar Heights Avenue	<i>Alectryon excelsus</i>	73	35	47.9	3/5	
	Luckens Rd	<i>Melia azedarach</i>	70	46	65.7	2/5	
	Jubaea Place	<i>Metrosideros excelsa</i>	12	9	75	2/5	
	Hindmarsh Road	<i>Alectryon excelsus</i> , <i>Prunus spp.</i>	63	46	73	3/5	
	Ohira Place	<i>Alectryon excelsus</i> , <i>Prunus spp.</i>	13	8	61.5	3/5	
	Pomeio Road	<i>Alectryon excelsus</i> , <i>Metrosideros excelsa</i>	5	3	60	2/5	
	Hoya Court	<i>Magnolia grandiflora</i>	5	5	100	1/5	
	Macrocarpa Place	<i>Magnolia grandiflora</i>	10	10	100	1/5	
	Rosetti Rise	<i>Melia azedarach</i>	20	18	90	3/5	
	Hutchinson Avenue	<i>Sophora spp.</i>	60	23	38	3/5	
	Archibald Road	<i>Sophora spp.</i> , <i>Alectryon excelsus</i>	12	12	100	2/5	
	Wally Nola Place	<i>Alectryon excelsus</i> , <i>Prunus spp.</i>	16	13	81.2	3/5	
	Hinerau Street	<i>Sophora spp.</i> , <i>Alectryon excelsus</i> , <i>Prunus spp.</i>	33	9	27	4/5	
	1998	Andelko Place	<i>Alectryon excelsus</i> , <i>Prunus spp.</i>	16	7	43.7	3/5
		View Road	<i>Prunus spp.</i>	26	24	92	2/5
		Vodanovich Road	<i>Alectryon excelsus</i>	120	81	67.5	3/5
		Sheehan Road	<i>Alectryon excelsus</i>	22	16	73	3/5
		Marguerita Place	<i>Metrosideros excelsa</i>	34	29	85.3	2/5
		/Searidge Rise					
Chislehurst Street		<i>Prunus spp.</i>	13	11	84.6	2/5	
Applewood Drive		<i>Metrosideros excelsa</i> , <i>Prunus spp.</i>	17	14	70	2/5	
Parma Place		<i>Prunus spp.</i>	15	10	66	2/5	
View Road		<i>Prunus spp.</i>	32	28	87.5	2/5	

A18

14

Year	Street name	Species name	Number of trees planted	Number survived	Percentage survival (%)	Condition rating (rounded)	
1999	Bonnard Place	<i>Alectryon excelsus</i>	14	11	78.5	4/5	
	Hanly Close	<i>Alectryon excelsus</i>	4	4	100	2/5	
	Fiaunty Place	<i>Alectryon excelsus</i>	20	8	40	3/5	
	Clearview Heights	<i>Alectryon excelsus</i> , <i>Prunus</i> spp.	14	9	64	3/5	
	Halloran Place	<i>Alectryon excelsus</i>	9	7	77	4/5	
	Imelda Road	<i>Callistemon</i> spp., <i>Alectryon excelsus</i> , <i>Vitex lucens</i>	19	13	68.4	4/5	
	Hereford Street	<i>Alectryon excelsus</i>	22	20	90	3/5	
	Amberley Avenue	<i>Alectryon excelsus</i>	21	32	72	3/5	
	Manhattan Heights	<i>Albizzia julibrissin</i>	36	20	55	3/5	
	Milwaukee Place	<i>Albizzia julibrissin</i>	6	7	100	3/5	
	Fairbanks Place	<i>Albizzia julibrissin</i>	3	3	100	3/5	
	Meadowvale Rise	<i>Alectryon excelsus</i>	28	26	93	4/5	
	St Leonards Road	<i>Alectryon excelsus</i>	37	25	67.5	3/5	
	Vanguard Road	<i>Sophora</i> spp.	11	3	9	2/5	
	Sabulite Road	<i>Alectryon excelsus</i>	28	17	60.7	3/5	
	Sunline Avenue	<i>Prunus</i> spp.	28	21	75	3/5	
	Adam Sunde Place	<i>Alectryon excelsus</i>	20	8	40	3/5	
	Portage Road	<i>Alectryon excelsus</i>	59	23	40	3/5	
	2000	Afton Place	<i>Alectryon excelsus</i> , <i>Metrosideros excelsa</i>	24	9	37.5	3/5
		Muriel Place	<i>Alectryon excelsus</i>	9	14	100	2/5
Karepo Crescent		<i>Alectryon excelsus</i>	33	11	33	3/5	
Glen Road		<i>Fraxinus oxycarpa</i>	8	0	0	5/5	
Millstream Drive		<i>Metrosideros excelsa</i>	27	27	100	2/5	
Epping Road		<i>Alectryon excelsus</i>	5	5	100	3/5	
Bancroft Crescent		<i>Alectryon excelsus</i> , <i>Metrosideros excelsa</i>	45	43	95	2/5	
Aetna Place		<i>Alectryon excelsus</i>	9	6	67	2/5	
Cobham Crescent		<i>Albizzia julibrissin</i>	55	28	51	2/5	
Ingleby Place		<i>Albizzia julibrissin</i>	9	7	77	2/5	
Kiernan Place		<i>Albizzia julibrissin</i>	13	6	46	3/5	
Brains Road		<i>Alectryon excelsus</i> , <i>Prunus</i> spp.	5	0	0	5/5	

Year	Street name	Species name	Number of trees planted	Number survived	Percentage survival (%)	Condition rating (rounded)	
2000	Newham Place	<i>Prunus</i> spp.	35	21	60	3/5	
	Virgo Place	<i>Metrosideros excelsa</i>	29	20	69	2/5	
	Capricorn Street	<i>Melia azedarach</i>	17	9	53	2/5	
	Hydra Place	<i>Metrosideros excelsa</i>	11	9	82	2/5	
2001	Armada Drive	<i>Alectryon excelsus</i> , <i>Metrosideros excelsa</i>	47	22	47	2/5	
	Childers Road	<i>Jacaranda</i> spp, <i>Metrosideros excelsa</i>	18	5	27	2/5	
	Edwin Freeman Place	<i>Melia azedarach</i> , <i>Plagianthus regius</i>	19	11	57	3/5	
	Brains Road	<i>Alectryon excelsus</i> , <i>Metrosideros excelsa</i>	20	11	55	2/5	
	Seymour Road	<i>Albizia julibrissin</i> , <i>Prunus</i> spp., <i>Alectryon excelsus</i>	60	45	75	2/5	
	Taipari Road	<i>Alectryon excelsus</i>	41	26	63	3/5	
	Taioma Crescent	<i>Alectryon excelsus</i> , <i>Metrosideros excelsa</i>	40	28	70	4/5	
	Rewarewa Road	<i>Metrosideros excelsa</i> , <i>Alectryon excelsus</i>	22	22	100	1/5	
	Albert Road	<i>Metrosideros excelsa</i>	22	18	81	2/5	
	Martin Place	<i>Albizia julibrissin</i> , <i>Metrosideros excelsa</i>	20	14	70	3/5	
	Brougham Place	<i>Prunus</i> spp, <i>Fraxinus</i> spp	28	19	68	3/5	
	Birdwood Road	<i>Plagianthus regius</i>	28	19	68	3/5	
	2002	Cliff View Drive	<i>Metrosideros excelsa</i>	55	37	67	2/5
		Milian Drive	<i>Plagianthus regius</i> , <i>Pittosporum eugeniooides</i>	40	25	62	2/5
Matama Road		<i>Beilschmiedia tarairi</i>	33	17	51	3/5	
Riseira Drive		<i>Podocarpus totara</i>	59	49	83	2/5	
Lesia Annis Place		<i>Albizia julibrissin</i>	20	12	60	3/5	
Westward Ho		<i>Plumeria rubra</i>	14	2	14	4/5	
Sunnyside Road		<i>Metrosideros</i> spp.	52	50	96	3/5	
Tabitha Crescent		<i>Podocarpus totara</i>	59	47	79	2/5	
Robert Burke Place		<i>Metrosideros excelsa</i>	19	15	79	2/5	
Aidade Place		<i>Melia azedarach</i>	44	32	73	4/5	
Township Road		<i>Metrosideros excelsa</i>	17	17	100	4/5	
Stephen Avenue		<i>Melia azedarach</i> , <i>Alectryon excelsus</i>	14	11	78.5	2/5	
2004							3/5

Year	Street name	Species name	Number of trees planted	Number survived	Percentage survival (%)	Condition rating (rounded)
2004	Kona Crescent	<i>Melia azedarach</i> , <i>Alectryon excelsus</i> , <i>Pittosporum eugenioides</i>	46	22	47.8	2½
	Fairdene Avenue	<i>Melia azedarach</i> , <i>Alectryon excelsus</i> , <i>Pittosporum eugenioides</i>	2	0	0	5½
	Charlenne Close	<i>Olea europaea</i>	32	20	62.5	2½
	Lucienne Drive	<i>Olea europaea</i>	15	14	93	2½
	Gloria Avenue	<i>Metrosideros excelsa</i> (Maori princess)	24	19	79	2½
	Barberry Lane	<i>Metrosideros excelsa</i> (Maori princess)	7	7	100	2½
	Peachgrove Road	<i>Metrosideros excelsa</i> (Maori princess)	18	12	66	2½
	Taremaro Place	<i>Prunus awanui</i>	24	16	66	3½
	Legacy Drive	<i>Prunus awanui</i>	27	24	88.8	3½
	Cretian Crescent	<i>Prunus awanui</i>	20	15	75	3½
	Lower Savoy Road	<i>Ginkgo biloba</i>	13	11	84.6	4½
	Glenorchy Street	<i>Ginkgo biloba</i>	35	31	94.2	2½
	Brandon Road	<i>Magnolia grandiflora</i> , <i>Phormium tenax</i>	9	9	100	2½
	Camphora Place	<i>Prunus spp.</i>	13	10	76.9	4½
	Scarlet Drive	<i>Prunus spp.</i>	17	14	82.3	4½
	Muriel Place	<i>Pittosporum eugenioides</i>	7	4	80	2½
	Afton Place	<i>Pittosporum eugenioides</i>	16	10	62.5	2½
Hamui Place	<i>Beilschmiedia tarairi</i>	14	6	50	4½	
Redwood Avenue	<i>Beilschmiedia tarairi</i>	41	24	58	4½	
2005	Covil Avenue	<i>Pittosporum eugenioides</i>	20	20	100	2½
	Kervil Avenue	<i>Vitex lucens</i>	60	58	96	2½
	Zefiro Drive	<i>Ginkgo biloba</i>	42	26	61.9	4½
	Amery Place	<i>Prunus spp.</i>	12	14	100	3½
	Kelman Road	<i>Olea europaea</i>	40	35	87.5	3½
	Barbary Avenue	<i>Olea europaea</i>	34	29	91	2½
	Kelkirk Street	<i>Olea europaea</i>	22	16	72.7	3½
	Daphne Street	<i>Olea europaea</i>	2	2	100	2½
	Laura Street	<i>Ginkgo biloba</i>	19	14	73.7	3½

Year	Street name	Species name	Number of trees planted	Number survived	Percentage survival (%)	Condition rating (rounded)	
2006	Elvira Place	<i>Fraxinus</i> spp.	12	10	83.3	2/5	
	Ulrich Drive	<i>Metrosideros excelsa</i>	58	49	84.4	3/5	
	Milli Way	<i>Prunus</i> spp.	31	21	67	3/5	
	Riverpark Crescent	<i>Olea europaea</i>	84	84	100	2/5	
	Moor Avenue	<i>Prunus</i> spp.	19	16	84.2	3/5	
	Hereford Street	<i>Alectryon excelsus</i>	9	8	88.8	3/5	
	Denver Avenue	<i>Fraxinus</i> spp.	16	16	100	2/5	
	McKinley Road	<i>Fraxinus</i> spp.	11	11	100	2/5	
	Phillip Avenue	<i>Mertya sinclairii</i>	14	3	21	2/5	
	Foothills Lane	<i>Mertya sinclairii</i>	13	12	92.3	3/5	
	Oratia Drive	<i>Mertya sinclairii</i>	25	16	64	2/5	
	2007	Danube Lane	<i>Prunus</i> spp.	18	16	88	2/5
		Maywood Crescent	<i>Alectryon excelsus</i>	19	18	95	3/5
		Vodanovich Road	<i>Alectryon excelsus</i>	24	22	91	3/5
Norma Avenue		<i>Alectryon excelsus</i>	1	1	100	3/5	
Blethyn Place		<i>Alectryon excelsus</i>	10	10	100	3/5	
MacKenzie Street		<i>Albizia julibrissin</i>	12	12	100	3/5	
Farquhar Road		<i>Albizia julibrissin, Alectryon excelsus</i>	107	106	99	3/5	
Evans Road		<i>Metrosideros excelsa</i>	22	22	100	3/5	
Easton Parade		<i>Metrosideros excelsa</i>	21	16	76	3/5	
Autumn Avenue		<i>Metrosideros excelsa</i>	7	8	100	2/5	
Hueglow Rise		<i>Albizia julibrissin</i>	26	28	100	2/5	
Lanham Lane		<i>Fraxinus</i> spp.	8	7	62.5	2/5	
Killygordon Place		<i>Fraxinus</i> spp.	23	21	91.3	2/5	
Broadfield Street		<i>Prunus</i> spp.	24	27	100	3/5	
Tellin Close	<i>Metrosideros excelsa</i>	5	5	100	3/5		
Garton Drive	<i>Fraxinus</i> spp.	12	9	75	2/5		
Breenagh Place	<i>Prunus</i> spp.	10	10	100	3/5		
Cloghan Close	<i>Fraxinus</i> spp.	9	9	100	3/5		

Table 2: Streets with partial or incomplete records of tree plantings (excluded from data analysis) 1994-2006

Year	Street name	Species planted	Species present	Number of trees planted	Number survived	Condition rating (rounded)
1994	Picasso Drive	No record	<i>Metrosideros excelsa</i> , <i>Alectryon excelsus</i>	No record	72	2/5
1995	Tabitha Crescent	<i>Myoporum laetum</i> or <i>Sophora</i> spp. <i>Prunus</i> spp.	<i>Sophora</i> spp., <i>Alectryon excelsus</i>	No record	12	3/5
1996	Parma Place	<i>Prunus</i> spp.	<i>Prunus</i> spp.	No record	10	2/5
	Silverstone Place	No record	<i>Alectryon excelsus</i>	28	20	2/5
	Ohira Place	No record	None	14	0	
	Laingfield Terrace	No record	<i>Alectryon excelsus</i> , <i>Albizia julibrissin</i>	13	5	3/5
	Haiyard Place	No record	<i>Alectryon excelsus</i>	30	18	3/5
	Glennfinn Place	No record	<i>Alectryon excelsus</i>	39	19	2/5
	Archibald Road	No record	<i>Alectryon excelsus</i>	45	33	2/5
	Picasso Drive	No record	<i>Sophora</i> spp.	20	12	
	Matisse Drive	No record	<i>Liriodendron tulipifera</i>	10	11	2/5
	Bailini Rise	No record	<i>Magnolia grandiflora</i>	14	13	2/5
	Louise Place	No record	<i>Alectryon excelsus</i>	8	4	3/5
	Mona Vale	No record	<i>Alectryon excelsus</i>	28	17	3/5
	Blease Street	No record	<i>Melia azedarach</i>	28	27	3/5
	Osman Street	No record	None	10	0	
1997	Anzac Valley Road	No record	<i>Platanus orientalis</i>	6	6	3/5
	Benita Place	<i>Podocarpus totara</i> , <i>Sophora</i> spp.	None	No record	0	0
1998	Jacinta Grove	No record	<i>Sophora microphylla</i> , <i>Metrosideros excelsa</i>	9	8	2/5
	Buscomb Avenue	No record	<i>Metrosideros excelsa</i>	16	20	2/5
	Hogarth Rise	No record	<i>Albizia julibrissin</i>	21	20	2/5
	Francesca Place	No record	<i>Albizia julibrissin</i>	4	3	2/5
	Darcy Place	No record	<i>Prunus</i> spp.	16	13	3/5
	Sunline Avenue	No record	<i>Prunus</i> spp.	29	20	3/5

Year	Street name	Species planted	Species present	Number of trees planted	Number survived	Condition rating (rounded)
1998	Ferry Parade	No record	<i>Metrosideros excelsa</i> , <i>Platanus orientalis</i> , <i>Albizia julibrissin</i> , <i>Piptosporum eugenioides</i> , <i>Jacaranda</i> spp., <i>Prunus</i> spp.	17	26	
	Kamara Road	No record	Various, none appear to be part of programme	36	0	
	Hutchinson Avenue	No record	<i>Prunus</i> spp.	43	5	2/5
	Rosier Road	No record	<i>Prunus</i> spp.	29	12	3/5
	The Terrace	No record	<i>Metrosideros excelsa</i>	12	11	2/5
	Arahoe Road	No record	<i>Alectryon excelsus</i>	23	20	3/5
	Amberley Ave	No record	<i>Alectryon excelsus</i>	23	32	3/5
	Vodanovich Road*	No record	<i>Alectryon excelsus</i>	29		
	Coletta Place	No record	<i>Alectryon excelsus</i>	19	12	2/5
	Maywood Crescent	No record	<i>Alectryon excelsus</i>	40	18	3/5
	Roick Parade	No record	<i>Metrosideros excelsa</i>	14	4	3/5
	Victory Road	No record	<i>Metrosideros excelsa</i> , <i>Melia azedarach</i>	22	9	2/5
	Kauri Road	No record	<i>Betula pendula</i>	18	32	2/5
	Puriri Road	No record	None	27	0	
1999	Waimarie Road	No record	<i>Piptosporum eugenioides</i> , <i>Alectryon excelsus</i>	18	9	2/5
	Solar Road	No record	<i>Alectryon excelsus</i>	18	18	3/5
	Selak Place	<i>Alectryon excelsus</i> , <i>Cornellia</i> spp.	<i>Metrosideros excelsa</i>	15	6	
	Chislehurst Street	<i>Metrosideros excelsa</i>	<i>Prunus</i> spp.	30	20	2/5
	Crockett Lane	No record	<i>Cordyline australis</i> , <i>Albizia julibrissin</i>	10	11	3/5
	Manhattan Heights	No record	<i>Prunus</i> spp.	9	7	3/5
2000	Farwood Drive	<i>Alectryon excelsus</i>	30	29	3/5	
2002	Ryden Place	No record	<i>Alectryon excelsus</i> , <i>Fraxinus</i> spp.	12	11	3/5
	Skybird Place	No record	<i>Plagianthus regius</i>	9	5	3/5
	Kinvig Road	No record	<i>Podocarpus totara</i>	12	7	2/5

Year	Street name	Species planted	Species present	Number of trees planted	Number survived	Condition rating (rounded)
2002	Sachel Place	No record	<i>Podocarpus totara</i>	13	9	2/5
	Hassan Drive	<i>Plagianthus regius</i>	<i>Metrosideros excelsa</i>	51	48	2/5
2003	Roberts Road	No record	<i>Albizzia julibrissin</i>	No record	7	3/5
	Poto Street	No record	<i>Albizzia julibrissin</i>	No record	1	3/5
2003	McLeod Road	No record	<i>Melia azedarach</i>	No record	2	2/5
	Glynnbrooke Street	No record	<i>Melia azedarach</i>	No record	9	3/5
	Withers Road	No record	None	No record	0	
	Annisson Avenue	No record	<i>Prunus spp.</i>	No record	16	2/5
	Pitcher Place	No record	<i>Prunus spp.</i>	No record	13	3/5
	Coey Place	No record	<i>Prunus spp.</i>	No record	19	3/5
	Bahari Drive	No record	<i>Liquidamber styraciflua</i>	No record	30	2/5
	Starling Place	No record	<i>Liquidamber styraciflua</i>	No record	5	2/5
	Frostbite Place	No record	<i>Liquidamber styraciflua</i>	No record	2	2/5
	Arodella Crescent	No record	<i>Liquidamber styraciflua</i>	No record	22	3/5
	Robertson Road	No record	<i>Albizzia julibrissin</i>	No record	11	3/5
	Arney Road	No record	<i>Melia azedarach</i>	No record	8	2/5
	Pooks Road	No record	<i>Melia azedarach</i>	No record	5	2/5
	2006	Bellringer Road	<i>Mertya Sinclairii</i>	<i>Alectryon excelsus</i>	27	26
Carillon Place		<i>Mertya Sinclairii</i>	<i>Alectryon excelsus</i>	25	26	3/5

* Records from Vodanovich Road 1998 (incomplete records) have been included in records for Vodanovich Road 1997 (complete) due to difficulties during surveying in determining what year trees were planted.

Photos of trees planted as part of the Keep Waitakere Beautiful Trust annual street tree programme

Examples of healthy trees and streets

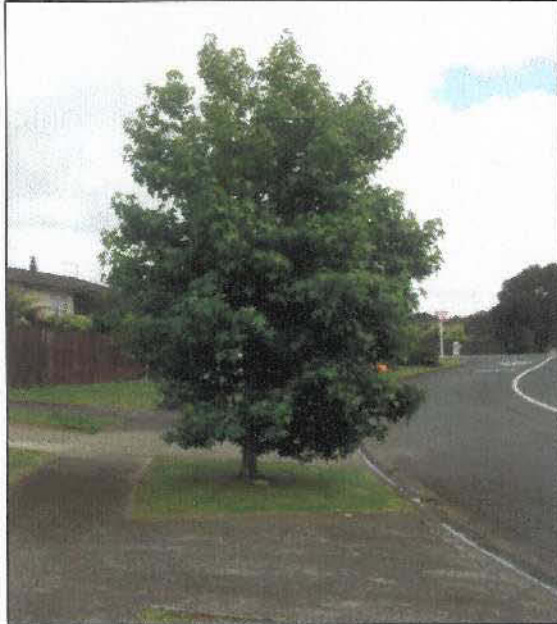


Photo 1. Healthy *Liquidambar styraciflua* on Arodella Place, Ranui.

Photo 2. *Vitex lucens*.

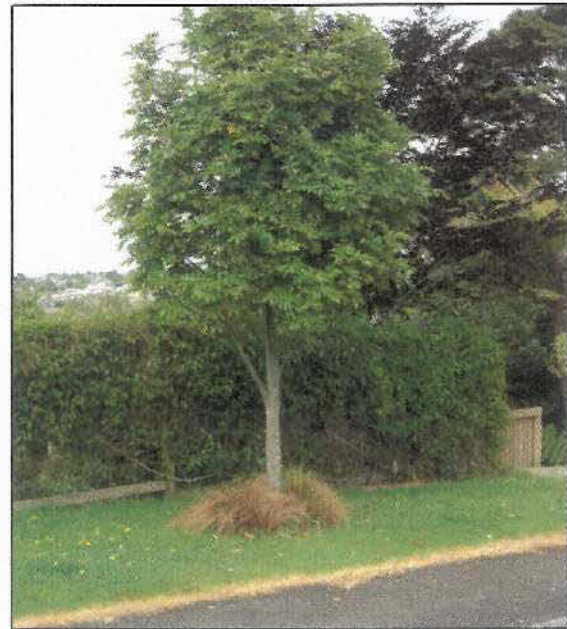
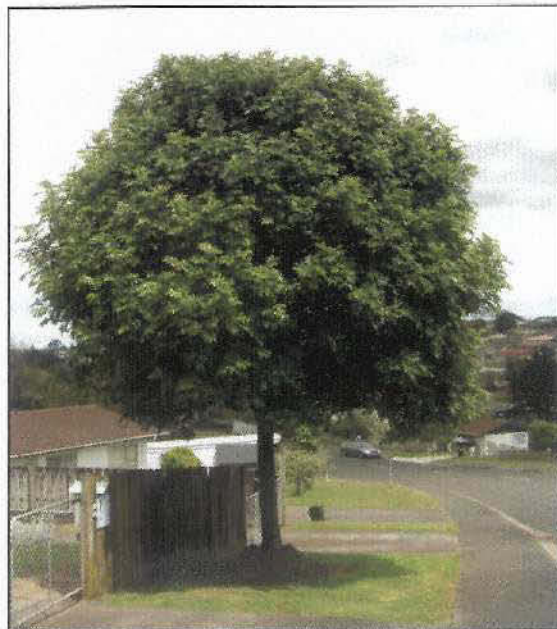


Photo 3, 4. Healthy examples of titoki *Alectryon excelsus* in street tree plantings.



Photo 5. *Magnolia grandiflora* on Macrocarpa Place, Ranui.



Photo 6. *Olea europaea* on Charlenne Close, Ranui.



Photo 7. *Prunus serrulata* on Parma Place, Henderson.



Photo 8. *Metrosideros excelsa* line Kingsway Road, Herald Island.



Photo 9. *Podocarpus totara*.



Photo 10. Under planted (*Albizzia julibrissin*) by local residents in Kelston.

Examples of inferior and poorly maintained plantings



Photo 11. Exposed roots of *Alectryon excelsus*.

Photo 12. Dead standing *Alectryon excelsus* on Hinerau Street, Henderson.

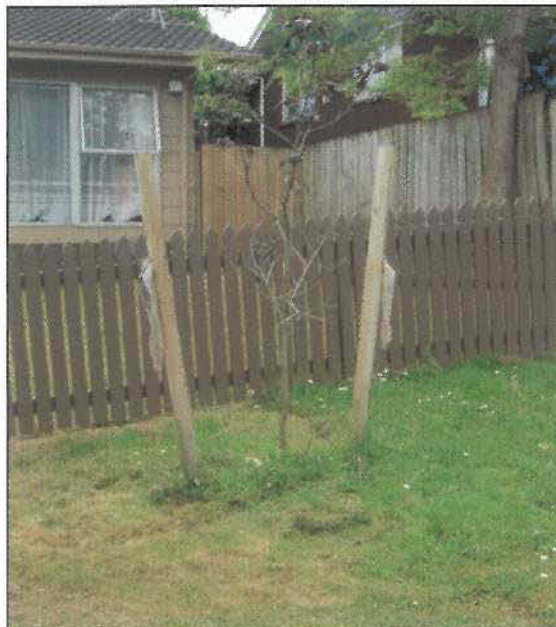


Photo 13, 14. Dead *Beilschmiedia tarairi*, Massey.



Photos 15, 16. Close mowing has resulted in basal damage to tree trunk..



Photo 17, 18. Mower damage, split trunks on street trees, root mound raised out of soil.



Photo 19. No street trees remaining on Puriri Road, Hobsonville.



Photo 20. Weedy *Vitex lucens*, Kervil Road, Te Atatu Peninsula.

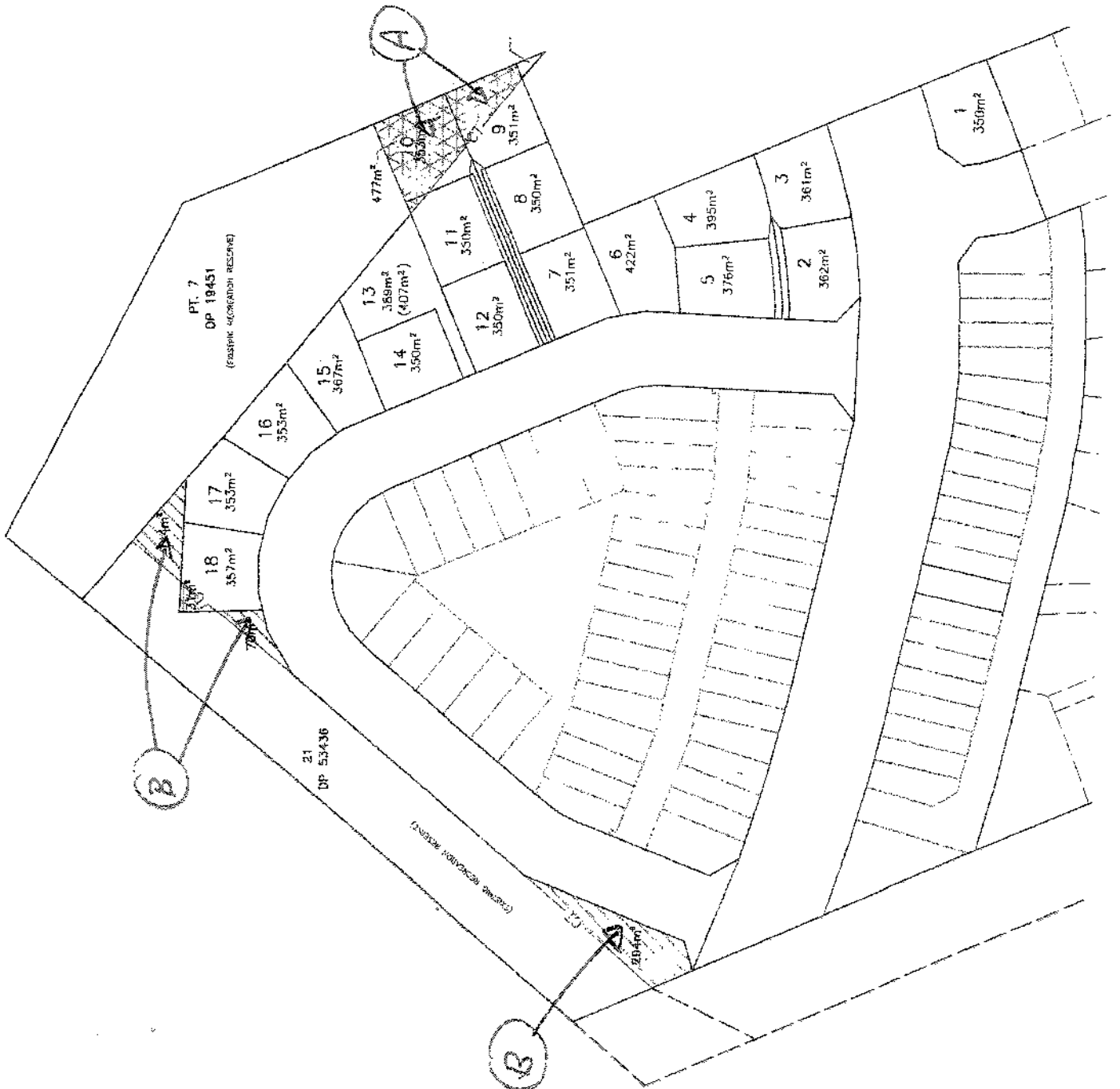
A32



Photo 21. Weedy and damaged *Alectryon excelsus*.

Photo 22. *Alectryon excelsus* and *Solanum mauritianum*, Kelston.

A1



A34