



All

OPTION THREE: SUSPENSION





Proposed site for Indoor Training Facility  
Appendix 2



Appendix 4.

Photo 1- View into Ken Maunder Park from Binsted Rd



Photo 2 - Vegetation blocking the view into Ken Maunder Park.



**Photo 3 – Public Toilets at entrance way to Ken Maunder Park**



**Photo 4 – Entrance way with public toilets on left and football club in background (both to be removed in proposed redevelopment)**





# Owen's Green - Top Paddock



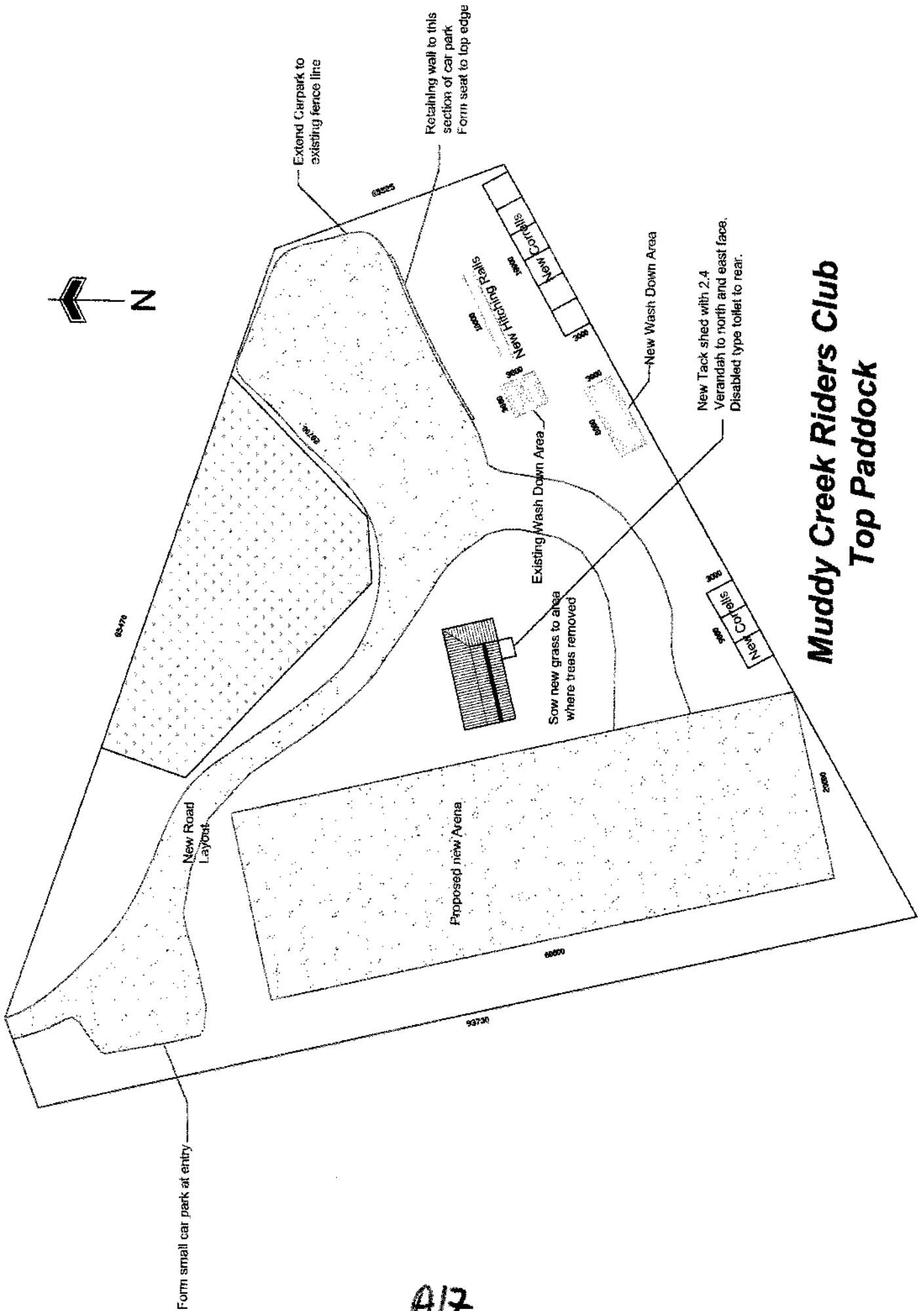
1:567 @ A4

Cadastral information from  
Land Information New Zealand  
Digital Cadastral Database DCDB  
Crown Copyright Reserved.



TA

A16



# Muddy Creek Riders Club Top Paddock

A17



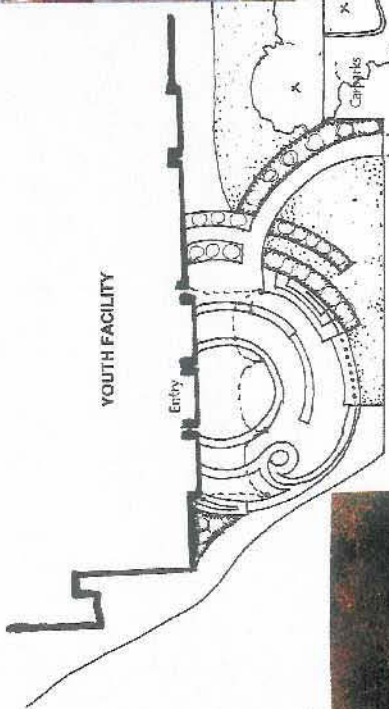
Example of water jets



Example of water vortex



Example of tiled 'fill'



YOUTH FACILITY

Entry



Muhlenbergia aspera



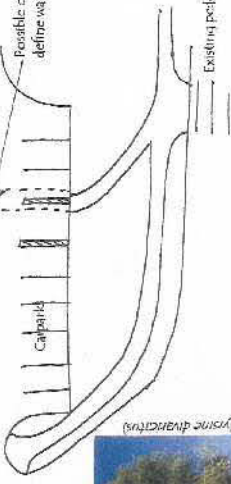
Weeping Maitipo (*Myrsine divaricata*)



Lancewood (*Pseudopanax crassifolius*)



Cordylone red fountain



Woolping Maitipo unlandscaped with Cordylone red fountain and Muhlenbergia aspera

Continuation of red coloured 'fill'

Exposed aggregate concrete paving

Brightly coloured (red) tiled 'fill' water feature

Water jet screens, walk into permeable paving below

Permeable paving under water jets

Row of water jet screens

Water feature vortex

Overlaid canopy

Honed concrete paving feature

Fire Escape

Entry

Fire Escape

Permeable paving strip

Walkway connector

Lancewood (*Pseudopanax crassifolius*) unlandscaped with *Muhlenbergia aspera*

### Plan View of Concept

(Scale 1:100)

### Detailed View of Concept

(Scale 1:50)

### KEY

grass

exposed aggregate concrete paving

concrete seat

honed concrete

low planting

specimen trees



Example of curved concrete seats

AMB Name

## Henderson Youth Facility Entry Plaza and Water Feature Landscape Concept Plan

Scale: 1:100 and 1:50 @ A1

Client: Henderson City Council  
 Date of issue: 16 October 2007  
 This drawing is copyright of Henderson City Council

Job No: 2007/01

Sheet No: 1 of 1

Drawn By: Robert Davies

Date: 16 October 07

Revision:



Henderson City Council  
 Landscape Development

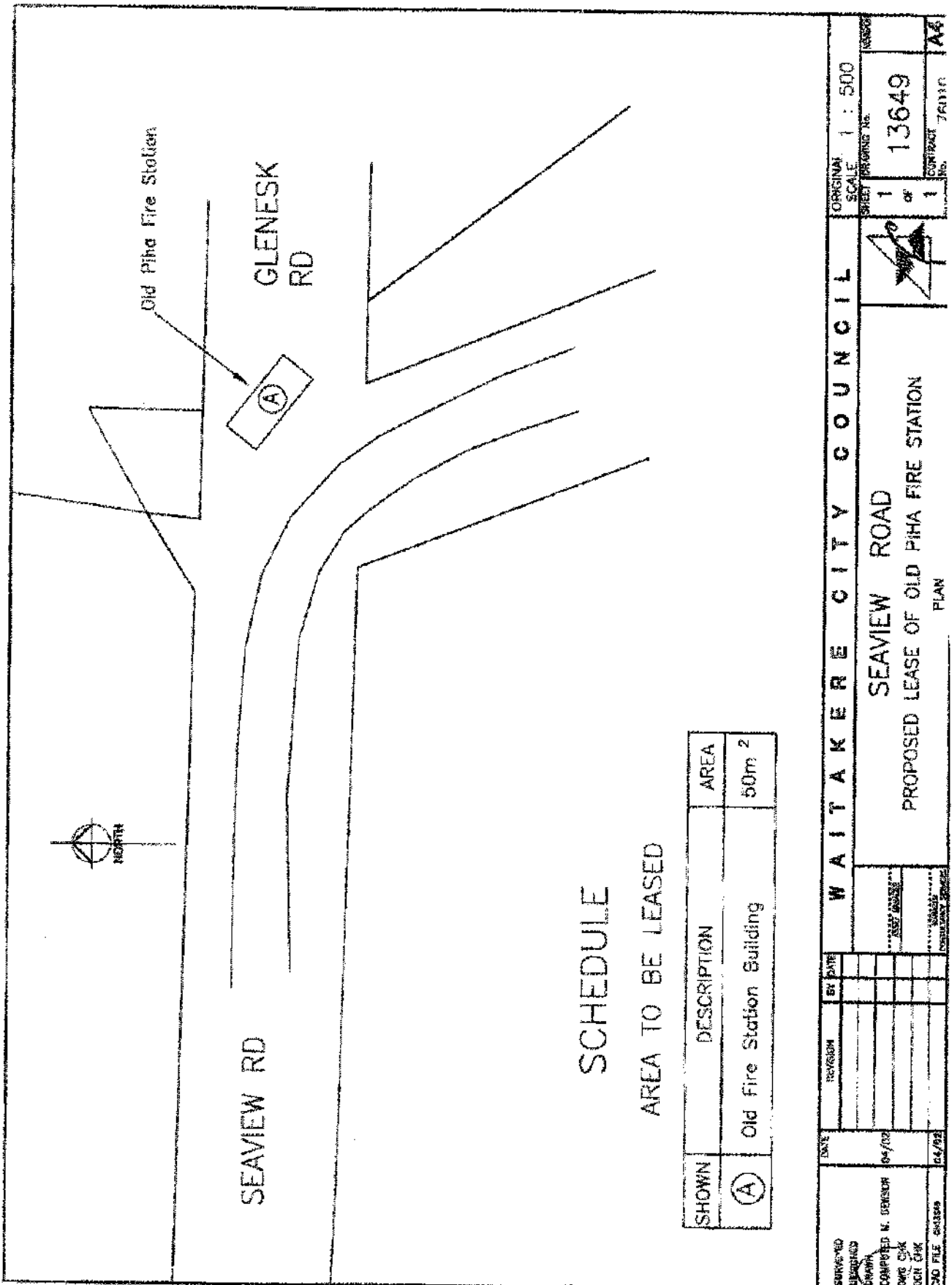
6 Henderson Valley Road  
 Private Bag 101  
 Henderson  
 Auckland City

### Sketch of Entry Plaza

(not to scale)

A18

Site of the Old Piha Fire Station Marked "A"



ORIGINAL SCALE 1 : 500  
SHEET 1 OF 1  
CONTRACT No. 13649  
TRAFFIC

W A I T A K E R E C I T Y C O U N C I L  
SEAVIEW ROAD  
PROPOSED LEASE OF OLD PIHA FIRE STATION  
PLAN

A19