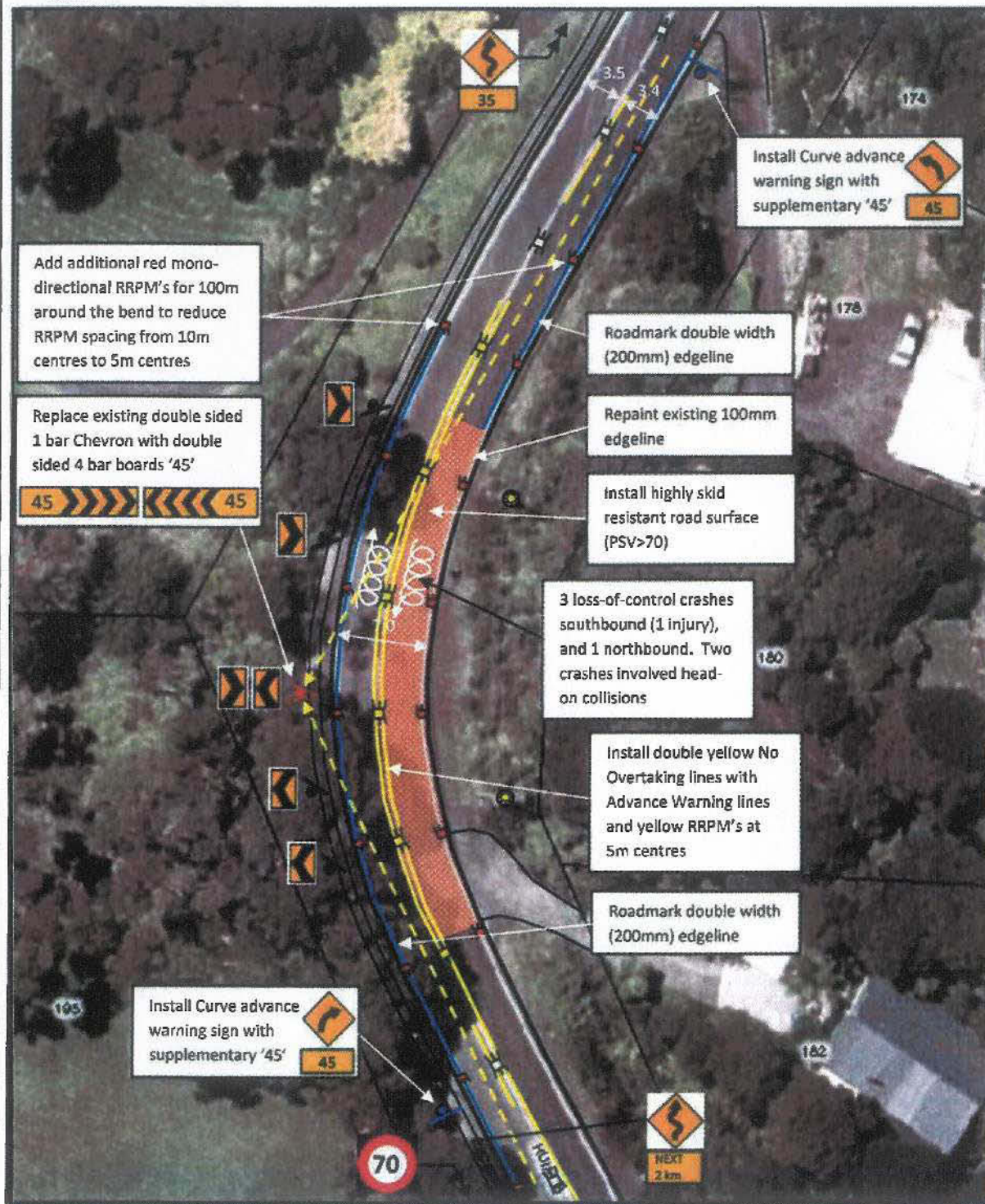




Appendix A4



**LEGEND**

- KERB/FOOTPATH
- ROADMARKING
- TRAFFIC SIGN
- PRAM CROSSING
- TREES/VEGETATION
- MANHOLE COVER
- STREET LIGHT
- POWER POLE
- STREET LIGHT & POWER POLE
- GUARDRAIL
- RRPMS

Scale at A4 - 1:500

Drawn	B.Royce	Checked	B.Royce
Approved	I.Jurisch	Date	21/02/08

**TRAFFIC ENGINEERING SOLUTIONS LIMITED**

**TES**

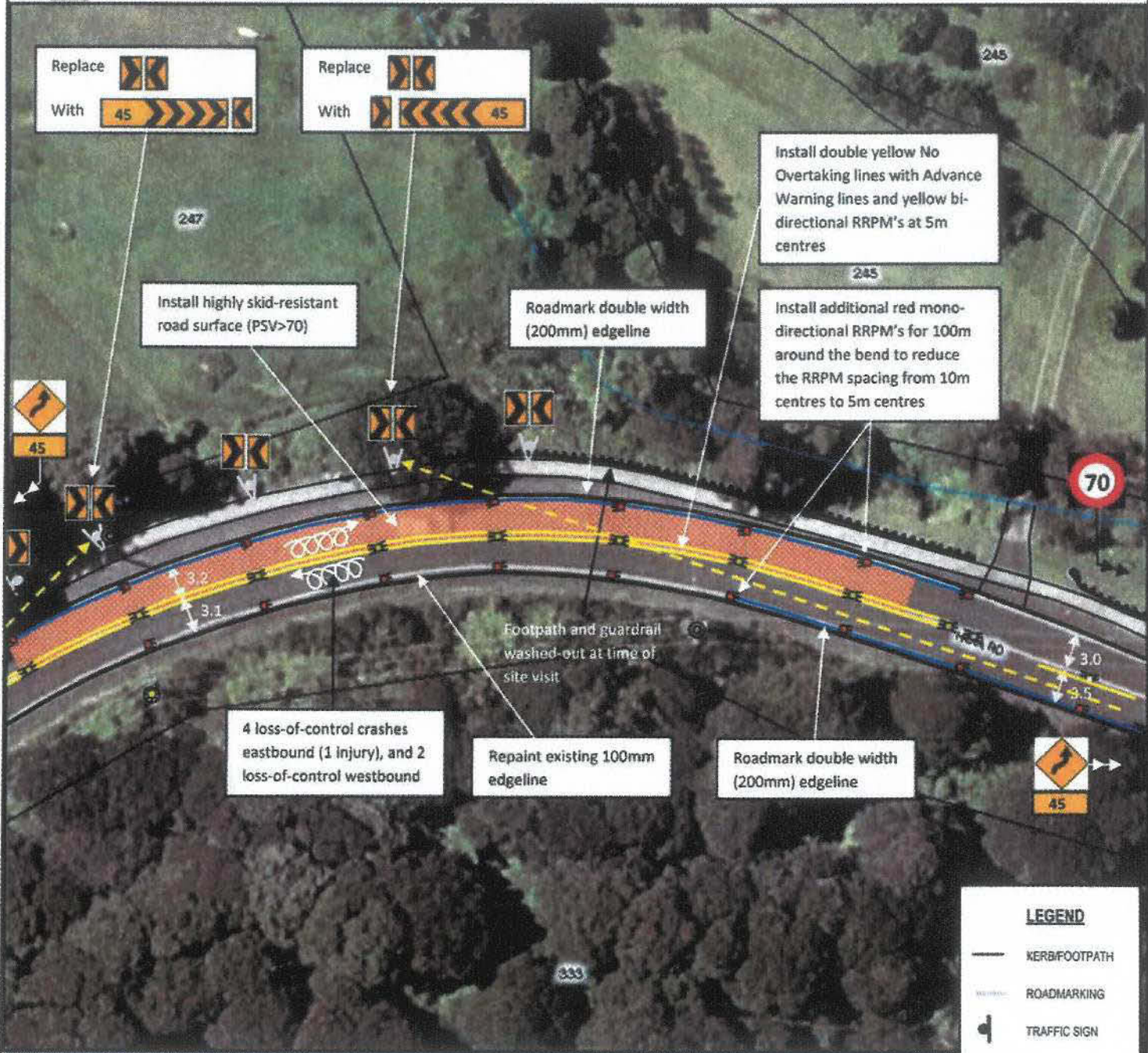
Traffic Engineering Solutions Limited  
 PO Box 7237, Wellesley Street, Auckland 1036  
 P: 0800 837 583, E: info@tes.net.nz



Huia Road - Bend 4 (No. 180)  
 Scheme Plan  
 Drawing No: T07019-24-41 Rev: A



Appendix A5



**LEGEND**

- KERB/FOOTPATH
- ROADMARKING
- TRAFFIC SIGN
- PRAM CROSSING
- TREES/VEGETATION
- MANHOLE COVER
- STREET LIGHT
- POWER POLE
- STREET LIGHT & POWER POLE
- GUARDRAIL
- RRPM

A20

Scale at A4 - 1:500

Drawn	B.Royce	Checked	B.Royce
Approved	L.Jurisch	Date	21/02/08

**TRAFFIC ENGINEERING SOLUTIONS LIMITED**

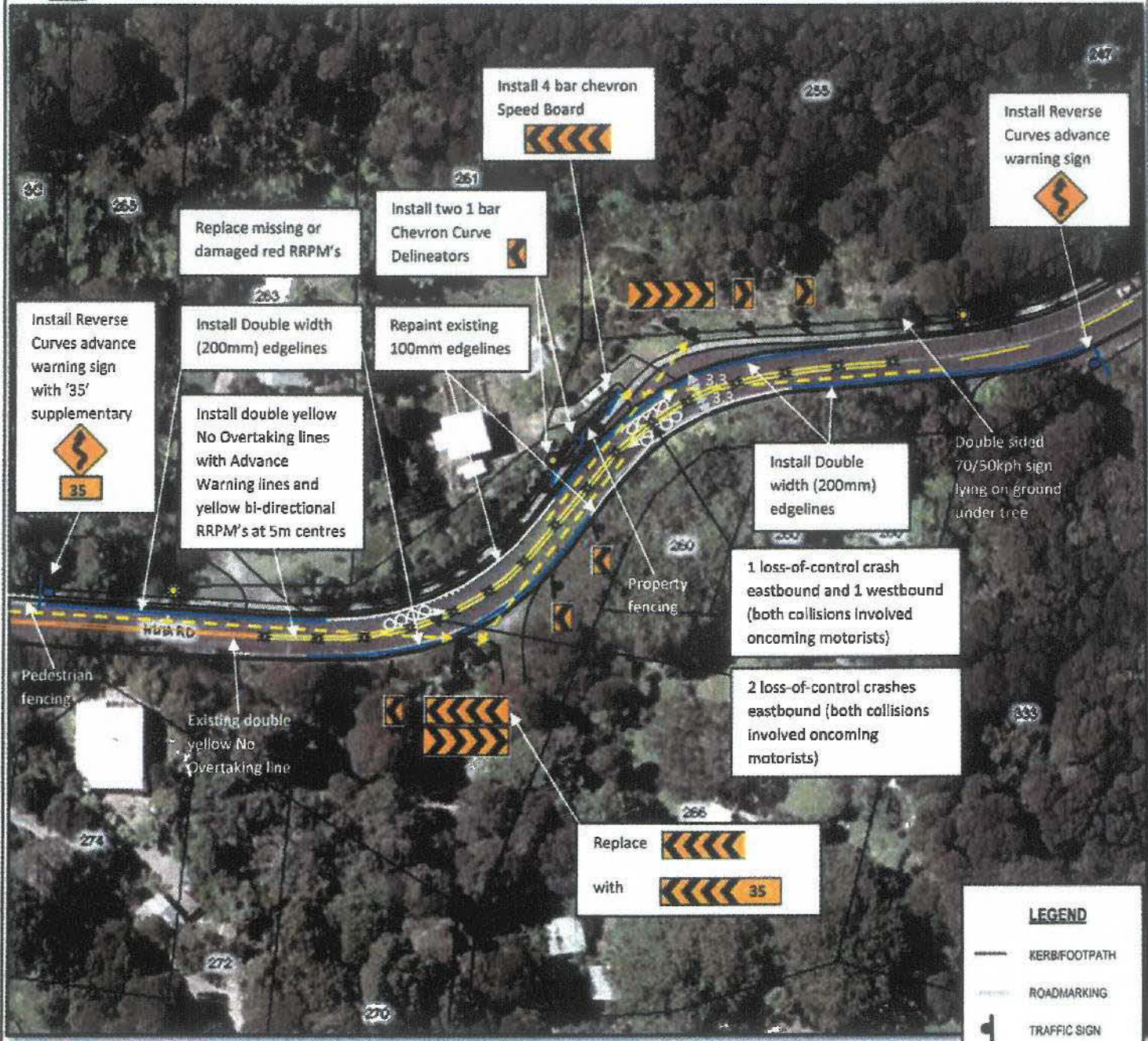
Traffic Engineering Solutions Limited  
 PO Box 7237, Wellesley Street, Auckland 1036  
 P: 0800 837 583, E: info@tes.net.nz



Huia Road - Bend 5 (No. 245)  
 Scheme Plan  
 Drawing No: T07019-24-51 Rev: A



Appendix A6



**LEGEND**

- KERB/FOOTPATH
- ROADMARKING
- TRAFFIC SIGN
- PRAM CROSSING
- TREES/VEGETATION
- MANHOLE COVER
- STREET LIGHT
- POWER POLE
- STREET LIGHT & POWER POLE
- GUARDRAIL
- RRPM

A21

Scale at A4 - 1:1000

Drawn	B.Royce	Checked	B.Royce
Approved	L.Jurisch	Date	21/02/08

**TRAFFIC ENGINEERING SOLUTIONS LIMITED**

T E S

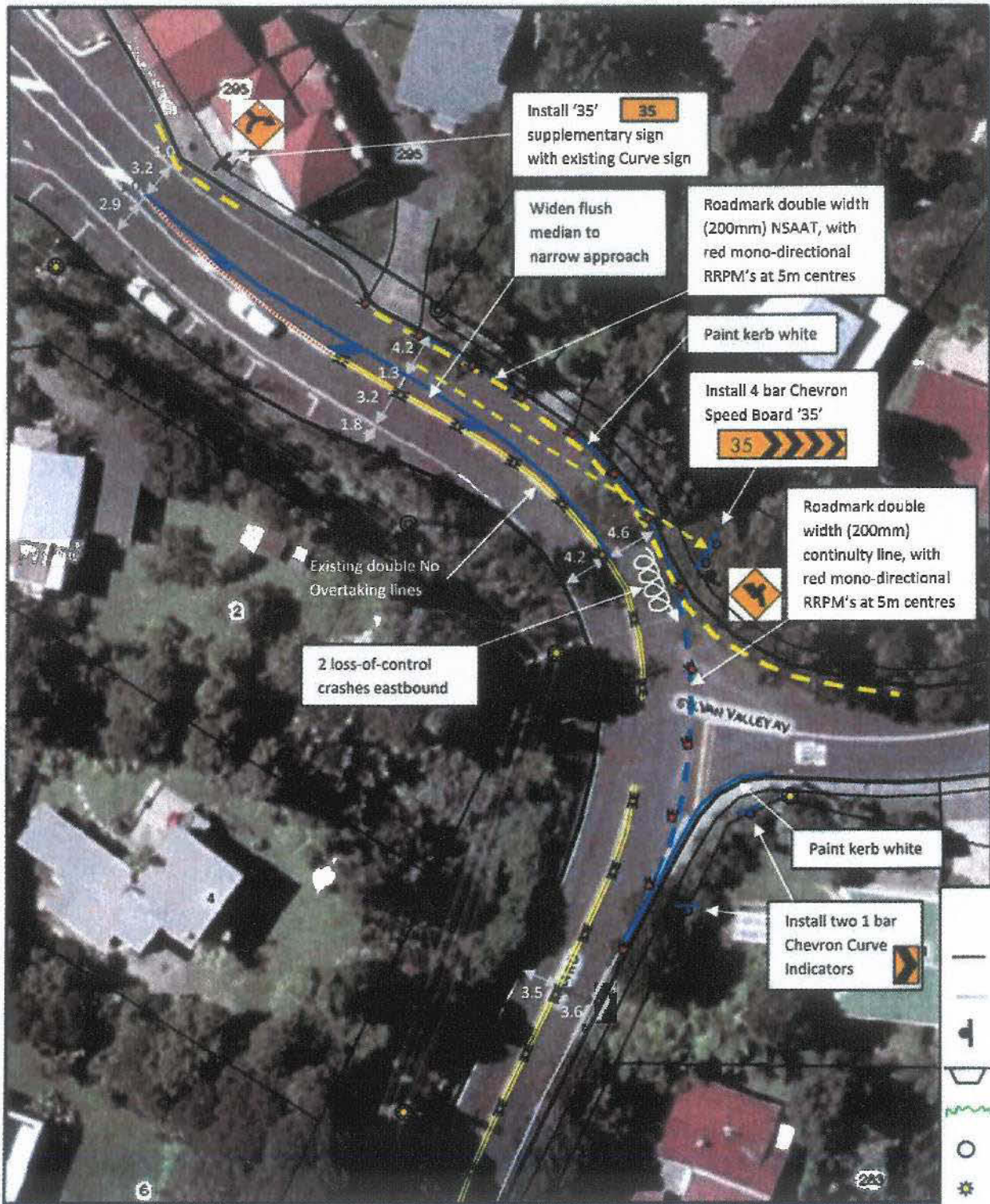
Traffic Engineering Solutions Limited  
 PO Box 7237, Wellesley Street, Auckland 1036  
 P: 0800 837 563, E: info@tes.net.nz



Huia Road - Bend 6 (No. 260)  
 Scheme Plan  
 Drawing No: T07019-24-61 Rev: A



Appendix A7



**LEGEND**

- KERB/FOOTPATH
- ROADMARKING
- TRAFFIC SIGN
- PRAM CROSSING
- TREES/VEGETATION
- MANHOLE COVER
- STREET LIGHT
- POWER POLE
- STREET LIGHT & POWER POLE
- GUARDRAIL
- RRPM

A22

Scale at A4 - 1:500

Drawn	B.Royce	Checked	B.Royce
Approved	I.Jurlich	Date	21/02/08

**TRAFFIC ENGINEERING SOLUTIONS LIMITED**

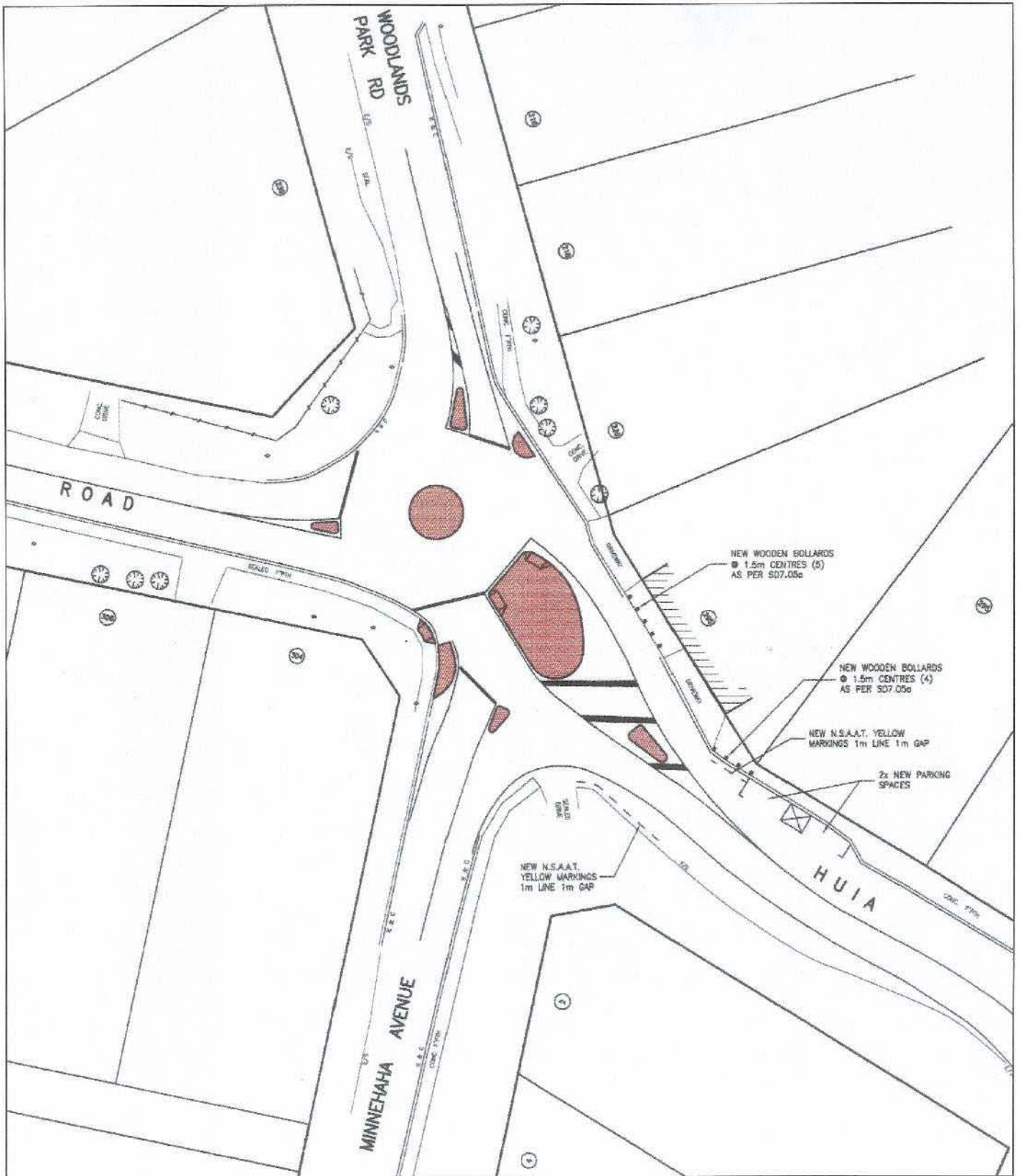
T E S

Traffic Engineering Solutions Limited  
 PO Box 7237, Wellesley Street, Auckland 1036  
 P: 0800 837 583, E: info@tes.net.nz



Huia Road - Bend 7 (No. 283)  
 Scheme Plan  
 Drawing No: T07019-24-71 Rev: A

Appendix A8



A23