

**MINUTES OF A MEETING OF THE COUNCIL HELD AT WAITAKERE CENTRAL,  
6 HENDERSON VALLEY ROAD, HENDERSON, WAITAKERE,  
ON WEDNESDAY, 27 JUNE 2007  
COMMENCING AT 5.33 PM**

---

**PART D - REPORT OF THE CHIEF EXECUTIVE OFFICER**

**12 STRENGTHENING AUCKLAND REGIONAL GOVERNANCE**

1145/2007

MOVED by Cr Clews, seconded Cr Clow:

1. That the Strengthening Auckland's Regional Governance report be received.
2. That Waitakere City Council:
  1. **Note** that the model has been developed, taking into account all the feedback from both local and central Government to improving regional governance.
  2. **Note** that the December proposal for "Strengthening Auckland's Regional Governance" proposed:
    - i) An appropriately mandated and accountable strengthened regional council able to engage with central Government on regionally significant matters.
    - ii) That the strengthened regional council is appropriately funded.
    - iii) The creation of a regional forum of all the local authorities and central government to ensure prioritisation, agreement and coordination of regionally significant activities and funding across the region.
    - iv) Central Government aligning more closely its national strategies and policies with regional strategies and its funding with regionally agreed priorities.
  3. **Note** the central Government's feedback set out in the letter from the Minister of Local Government to the Auckland Mayors and Chief Executives dated 7 June 2007.
  4. **Note** that in particular, the central Government recognises that funding is a significant regional issue and is committed to:
    - a) continuing dialogue seeking enduring solutions that are consistent with accountability arrangements and the financial management principles in the Local Government Act 2002.
    - b) considering the outcomes of the Rating Inquiry in relation to the particular needs and circumstance of the Auckland region.
    - c) considering any new business case for new regional funding mechanisms.
  5. **Note** that there are no changes to representation recommended for the strengthened regional council at present, due to the impending Local Government election in October 2007, but note the central Government's indication of the desirability of providing flexibility to allow future community choices in relation to representation arrangements on the GAC, including the issue of appointed or elected leadership of the Council.

**Proposed Model for "Strengthening Auckland's Regional Governance**

6. **Agree** to the proposed model for strengthening regional governance as described in the Final Report dated June 2007, which includes the following elements:

- i) A strengthened regional Council with the overall role to exercise responsibility for regionally significant issues associated with the social, cultural, economic and environmental wellbeing of the region and adopting a sustainable development approach to its functions including:
  - a) the current functions of the Auckland Regional Council (ARC);
  - b) advocacy to, and negotiation of implementation agreements with, central government on regional priorities across all the dimensions of the four well beings;
  - c) convenor of and provider of secretariat support for the RSDF;
  - d) to adopt the One Plan for the Auckland region on the recommendation of the RSDF;
  - e) guardian of the One Plan to facilitate and support its implementation by relevant parties;
  - f) implement One Plan decisions for which it has direct responsibility;
  - g) facilitate agreements for funding and implementation of One Plan decisions agreed to by other parties to the One Plan;
  - h) monitor and report on progress with implementation of One Plan decisions;
  - i) regional economic development; tourism promotion and regionally significant (major) events management;
  - j) facilities and amenities that contribute to regional community well-being, including the funding of services provided by regional organisations; and
  - k) assess the need for and establish, if necessary, an agency to undertake urban development or renewal projects required to advance One Plan objectives; and
  - l) Subject to further work, (yet to be completed) and the preparation of business cases the strengthened regional council would have available to it new/additional funding tools to undertake its new role.
- ii) The strengthened regional council will have a new name, *Greater Auckland*, to reflect its new expanded role, to signal a change from the past and to better distinguish it from the Auckland City Council.

- iii) Establishment of a Regional Sustainable Development Forum (RSDF) as a standing committee of Greater Auckland responsible for developing a One Plan including developing the vision and outcomes sought for the region, including specifying the priorities and funding envelopes/parameters that parties are prepared to commit to the agreed priority regional strategies; with membership of the Regional Sustainable Development Forum being for:
- a) local authority representation to consist of two members from each of the City Councils, one from each of the District Councils and four from the regional council, with each council to decide its own RSDF members and alternates for those members, noting that this form of representation provide some recognition of proportionality;
  - b) central Government to contribute to the Regional Sustainable Development Forum with full speaking rights but not voting rights, with up to three participants with the right to speak;
  - c) Ministers to meet with RSDF periodically to allow discussion of the key issues and provide a framework for the ensuing work of the RSDF;
  - d) Mana Whenua representative(s) as participants in the RSDF with mechanisms by which they will participate to be developed in conjunction with them over the coming months;
  - e) the Chair of the Regional Sustainable Development Forum to be appointed by Greater Auckland it being envisaged that this will follow consultation with members of the Regional Sustainable Development Forum;
  - f) the Regional Sustainable Development Forum to endeavour to make decisions by consensus in the first instance and where consensus is unable to be reached, that voting be by simple majority vote of those present (i.e. no proxies) with each representative having one vote.
- iv) Development, by the Regional Sustainable Development Forum, of a One Plan for Auckland, which will promote social, cultural economic and environmental wellbeings, and where the One Plan and its component strategies will:
- a) include the strategic vision for the region articulated in the Auckland Sustainability Framework and have a 50 years + time horizon;
  - b) have a prioritised set of projects/programmes of regionally significant scale, and funding and implementation parameters over a ten-year period;
  - c) be developed under a progressive approach, whereby its scope and breadth of actions is expanded over time;
  - d) be taken into account when Government makes significant decisions impacting on the Auckland region.

- v) The One Plan to be implemented through the following:
- a) binding funding and implementation agreements between parties for particular projects/programmes;
  - b) all Councils will be required to show One Plan commitments in Long-Term Council Community Plans and publicly report progress towards meeting those commitments;
  - c) inclusion of agreed One Plan commitments in the statement of intent of relevant council controlled organisations and Crown agencies;
  - d) sanctions could include moral persuasion, peer pressure, financial penalties, exclusion from benefits of participation in other regional programmes, and mechanisms to ensure transparency and accountability;
  - e) Greater Auckland, as guardian of the One Plan, will be responsible for facilitating contracts between other parties to the One Plan as necessary, and will also negotiate funding and implementation agreements with central Government to support agreed decisions in the One Plan.
- vi) Greater Auckland will have the choice to adopt the One Plan as recommended by the Regional Sustainable Development Forum or refer it back (in full or in part) to the Forum, but if agreement is not reached on specific aspects at the second attempt then Greater Auckland can amend those aspects of the plan.
- vii) That with regard to the priority function areas:

Funding

- a) The Auckland Councils, led by *Greater Auckland* will work together to:
- identify funding required for specific regional initiatives/services to meet the future needs of the region and achieve a step up in Auckland's performance;
  - fully optimise their respective rating bases and other existing funding lines;
  - identify the gap between current funding available and future needs;
  - explore options for additional funding and develop business cases to support any specific additional funding mechanisms necessary to meet requirements.
- b) That work will commence after an assessment of the report of the Rating Enquiry and the Government will engage with Auckland Councils in this assessment including discussing how it will engage with the work outlined in (a) above.
- c) The Government will work with the Auckland Councils to develop business cases for specific major regional projects that have been identified and prioritised in the development of the One Plan and will develop funding proposals for such projects. Detailed funding arrangements for specific priorities identified in the One Plan will form part of implementation discussions between relevant parties, which may include Government.

A44

### Three Waters

- d) The current arrangements for water services, with respect to Watercare Services Ltd (WSL) will continue.
- e) Existing Three Waters strategy work will be continued with a view to achieving a more optimal alignment between the planning of, funding for and delivery of water, wastewater and stormwater infrastructure and services.
- f) The Auckland Councils and central Government will continue to investigate the merits of legislative amendments relating to the ability of the owners of WSL to operate it within the general legislative model of a Council Controlled Organisation (CCO).

### Transport

- g) Legislation will be amended with a view to:
  - The Auckland Regional Land Transport Strategy (RLTS) being enabled to include major projects and priorities;
  - Responsibility for the appointment of directors to the Auckland Regional Transport Authority being transferred to Greater Auckland.

### Regional Facilities

- h) Greater Auckland to assume ownership and/or funding responsibility for existing facilities of a primarily regional nature, including the Auckland War Memorial and Transport Museums, and those facilities and services requiring regional funding; with any transfer of ownership and/or funding subject to a process of negotiation and agreement between parties. The starting point for the process would be the proposed 'Auckland Regional Amenities Bill' promoted by eleven region organisations and supported by Auckland City Council. Transfers will be contingent on:
  - identifying a transparent process for the identification of the reduced rating requirements by relevant territorial authorities as a result of the transfer of functions;
  - identification of additional regional funding sources to support both existing and new facilities;
  - certainty (possibly through legislation) about the funding obligations and mechanisms that are to operate within the region.

### Economic Development, Tourism and Major Events

- i) Auckland Plus, the regional economic development agency to assume a more active role in economic development initiatives within the region, as well as assuming responsibility for regional tourism and events management.
- j) The option of Auckland Plus also coordinating, and allocating Government funding to local economic development agencies to be further investigated.
- k) Greater Auckland, in consultation with other parties as appropriate, investigate the feasibility of and need for a regional agency to undertake urban development or renewal projects required to advance One Plan objectives.

Shared Services

- l) The Councils of the Auckland Region to actively identify and pursue opportunities to secure efficiencies through a more integrated approach to service provision. The work would build upon that already underway in the region, and draw on the results of the study planned by Auckland and Manukau City Councils.

Other

- m) Other issues of regional significance, including issues about the regional governance of the Auckland Civil Defence and Emergency Management group, and the relationship between regional and local land use policy require further consideration.
- n) The One Plan and Regional Sustainability Framework processes, together with the investigation of shared services, envisaged by the proposal create an opportunity for these issues to be explored further and resolved within the context of long-term regional strategic planning.
7. **Note** that the current powers and roles of Community Boards will be retained.

**Implementation**

8. **Agree** to implementation of the model and the implementation steps as described in the report and set out below:

**(a) Auckland Councils**

- As early as possible but no later than 31 August 2007, reach and sign agreement, building on councils' resolutions, concerning:
  - the interim membership and operation of the Regional Sustainable Development Forum;
  - the scope and effect of the One Plan;
  - the process and timetable for development of the interim One Plan; and
  - how One Plan commitments will be reflected in council planning and accountability documents.
- By December 2007, reach agreement with the Mana Whenua Forum concerning how they will engage with and contribute to the development of the One Plan by the Regional Sustainable Development Forum;
- By December 2007, reach agreement (in consultation with Ministry of Economic Development, NZ Trade & Enterprise and Tourism NZ) concerning the enhanced responsibility of *Greater Auckland* including funding streams for economic development, tourism promotion and the promotion of major events. Implementation on 1 July 2008;
- In consultation with the promoting organisations, amend the draft "Auckland Regional Amenities Bill" supported by Auckland City Council to reflect the agreed transfer of responsibilities to *Greater Auckland*, and promote for enactment as early as possible;

A46

- By March 2008, initiate an agreed joint process to identify, develop and implement initiatives to secure efficiencies through shared service provision;
- By 30 September 2007 agree to a terms of reference for the work to be undertaken concerning the funding issues identified earlier in this report.

**(b) Auckland Regional Council**

- By 31 October 2007, investigate and determine in consultation with Government and other Auckland councils, the potential and desirability of promoting urgent legislative change to strengthen regional governance in the form of a Local Bill;
- No later than 31 January 2008, change the operating name of the council as agreed in the proposal and determine, in consultation with Government and other Auckland councils, the desirability and urgency of changing the legal name of the regional council;
- No later than 31 January 2008, reach agreement, with all Auckland territorial authorities relating to the transfer of ownership and/or funding responsibilities for existing regional facilities and services, in a way that transparently transfers funding responsibility and capacity to the regional entity. Implementation on 1 July 2008;
- By 28 February 2008, appoint the RSDF as a committee of the council in line with the agreement with all councils, and convene the first meeting.

**(c) Joint Council/Government Officials**

- By 31 October 2007, investigate and report on the consequences of delayed legislative recognition of the One Plan concept;
- By 30 June 2008, obtain council and Government agreement to a process and criteria for analysing proposals for major new facilities within the region that may contribute to national as well as regional outcomes.

**(d) Government**

By 31 July confirm that Government will:

- actively contribute to the development of the One Plan, initially through;
- periodic meetings between relevant Ministers and the Regional Sustainable Development Forum;
- active attendance by up to three senior officials at meetings of the Regional Sustainable Development Forum;
- active engagement by Government officials with Auckland council officials in supporting the development of the One Plan
- Recognise the significance of the One Plan and give it careful consideration when Government makes significant decisions impacting on the Auckland region;

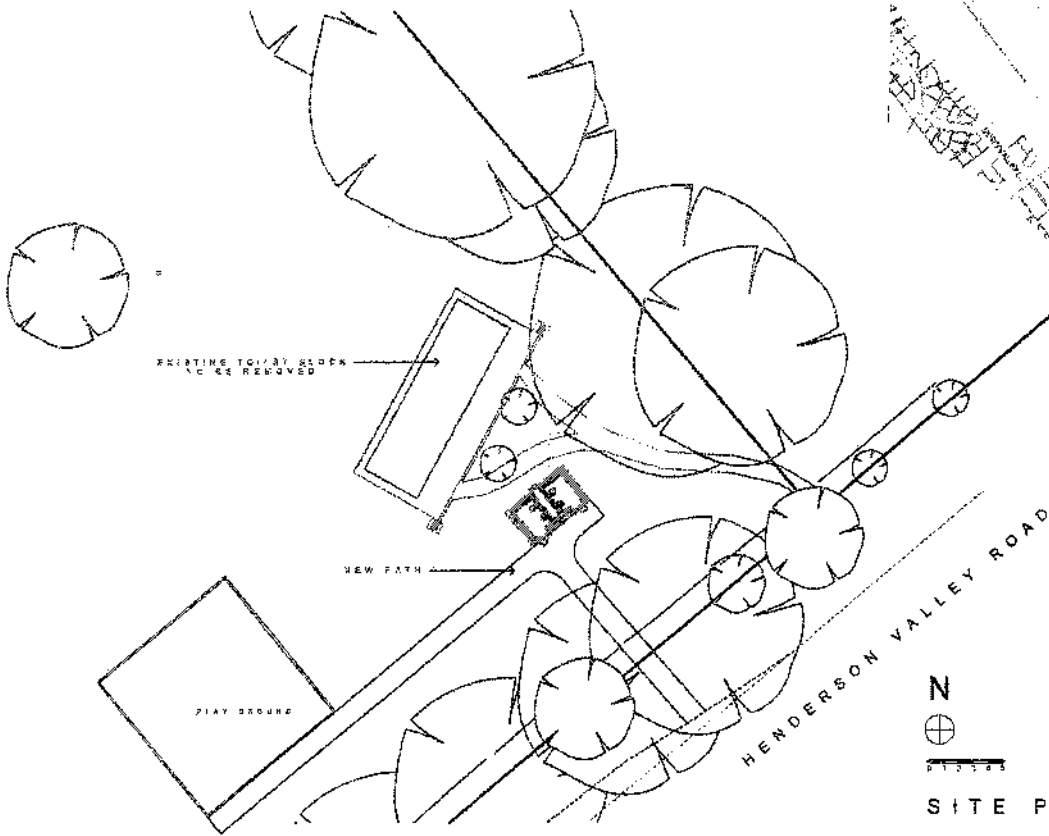
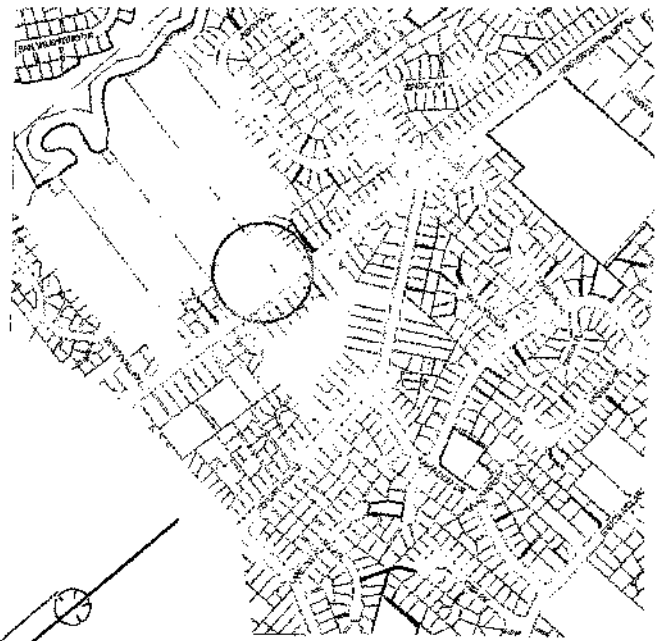
A47

- Be prepared to engage in discussions with *Greater Auckland* on how specific priorities in the One Plan might be achieved including possible alignment of strategies and/or delivery, and options for funding;
  - Consider any business cases for new regional funding mechanisms submitted by *Greater Auckland*;
  - Refer the issue of the desirability of greater flexibility for future reviews of regional representation arrangements within Auckland to the Local Government Commission to report and make recommendations, as a matter of priority;
  - Utilise the RSDF as a mechanism for engagement between Ministers and the Auckland Region;
  - Continue to improve the coordination and integration of Government interests in respect of Auckland as a basis for future engagement with the RSDF;
  - include in any legislation to implement decisions resulting from the 'Next Steps in the Land Transport Sector' Review authority for the Auckland Regional Land Transport Strategy to identify major projects and priorities;
  - Enact legislation to repeal the special ARTA appointment process at the earliest opportunity;
  - Initiate discussions with Auckland councils in developing a response to the findings from the Local Authority Rating Inquiry (Inquiry report due end July 2007).
9. **Note** the need for and scope of any further consultation on the proposed model for strengthening regional governance will be determined once the proposal becomes definitive in July, following consideration by central Government.
10. **Agree** that the Political Reference Group be empowered to conduct ongoing discussions with Government ministers as to the refinement and implementation of the final proposal; and that the details of the proposal will be presented to Councils for their ratification in the form of an agreement among the Auckland Councils signed before 31 August 2007.

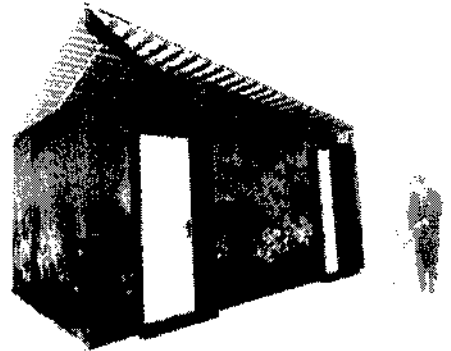
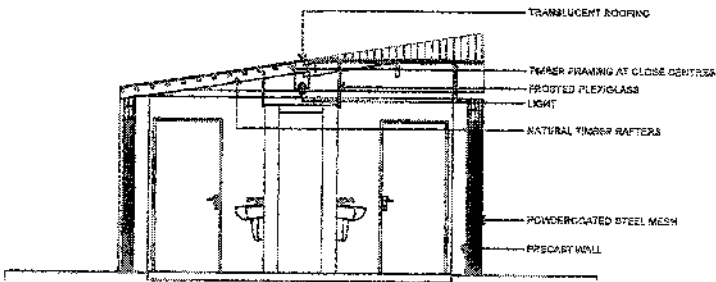
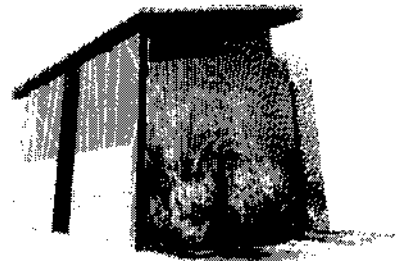
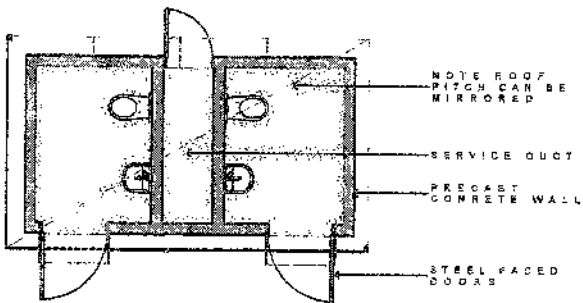
**CARRIED**

A48

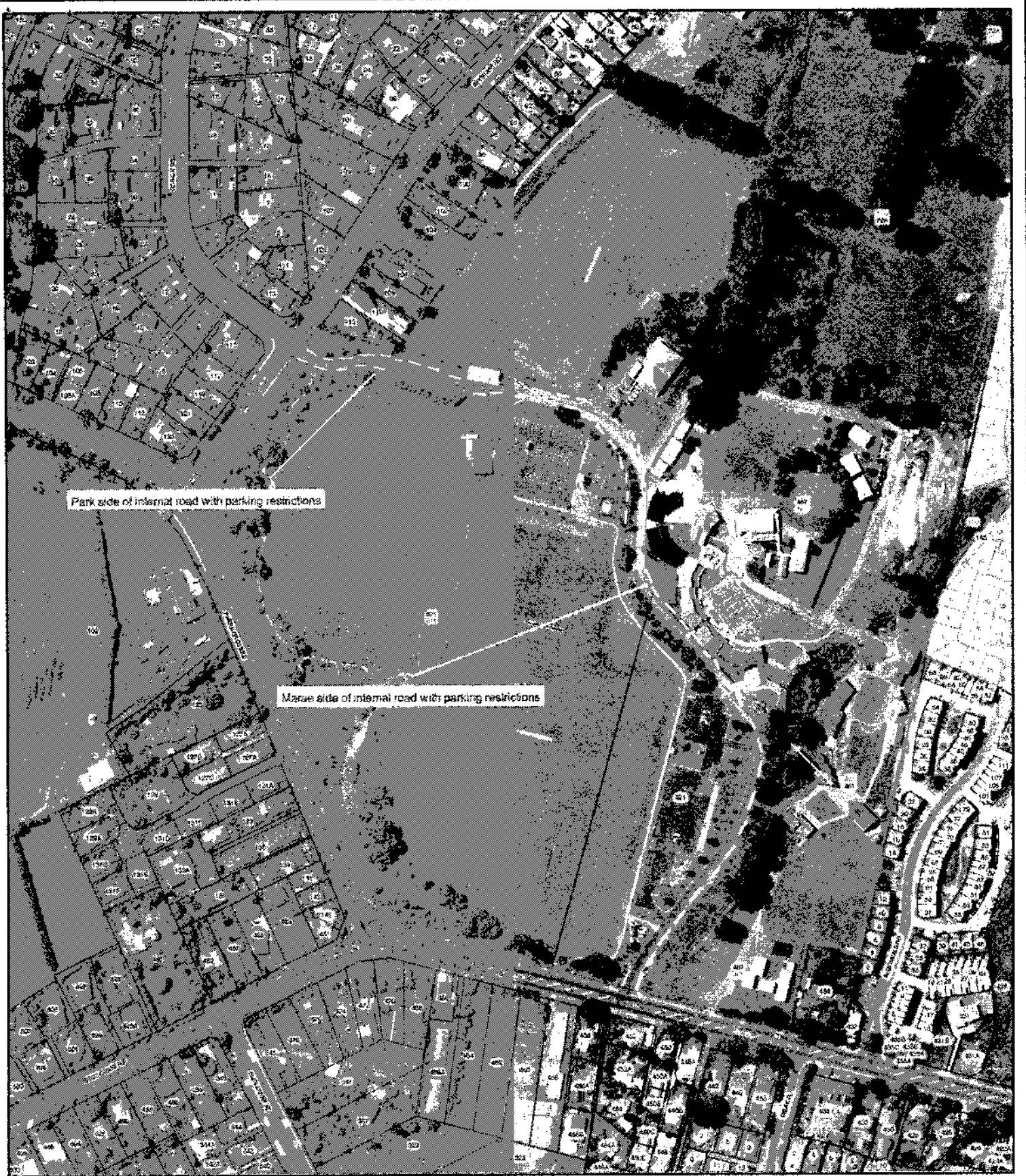
# HENDERSON VALLEY PARK Public Toilet.



N  
  
  
 SITE PLAN





ALLG



Park side of internal road with parking restrictions

Marse side of internal road with parking restrictions


**Legend**

-  Railway Station
-  Railway
-  Building Footprint
-  Sub 223
-  Parcel
-  Road
-  Stream
-  Water Body

# PARRS PARK

## NO PARKING RESTRICTIONS

Cadastral Information from  
Land Information New Zealand  
Digital Cadastral Database DCDB  
Crown Copyright Reserved.

  
 Scale = 1:3,527  
 10 Metres  
 8/08/2007

Services shown on public amenity land are not public drains unless used as through drains  
 Waikōwhiri Council endeavours to provide accurate spatial data no guarantee as to the  
 completeness and accuracy of the data shown on this plan can be given.  
 All information, including levels and locations, are not of survey  
 grade accuracy and should be verified on site.  
 For enquiries about the information shown please phone the call centre (09) 839 0400

  
**Waikōwhiri City Council**  
 To Inspire a Wellbeing

A50

**Summary of Registrations of Interest – Grazing at Armour Bay, Parau**

**Muddy Creek Riders Incorporated**

Assessment Criteria	Comments	Council's Considerations
1. Is the applicant a volunteer based non-profit group?	<ul style="list-style-type: none"> <li>- incorporated society</li> <li>- not for profit club</li> </ul>	<ul style="list-style-type: none"> <li>- this meets the leasing policy criteria</li> </ul>
2. Does the applicant have an open membership?	<ul style="list-style-type: none"> <li>- open to members and guests</li> <li>- membership is granted at the discretion of the committee</li> <li>- where membership is declined the committee may choose not to provide a reason</li> <li>- Membership rates are \$50 family, \$25 individual, \$10 support person</li> </ul>	<ul style="list-style-type: none"> <li>- there is no policy on the circumstances where an application for membership will be declined or any review process</li> <li>- leasing policy requires open membership</li> </ul>
3. What community activities are provided?	<ul style="list-style-type: none"> <li>- riding lessons</li> <li>- attending pony club events</li> <li>- providing community pony rides</li> <li>- disable riding for adults</li> </ul>	<ul style="list-style-type: none"> <li>- it is expected that grazing land at Armour Bay will allow the club to support and expand services already provided at Owen's Green</li> </ul>
4. Does the applicant provide training or coaching and what is the cost, if any?	<ul style="list-style-type: none"> <li>- 30-45 minute lessons available</li> <li>- \$15 for 30-45 minute lessons</li> <li>- lessons provided for members and school groups</li> </ul>	
5. Is the applicant registered or affiliated with a recognised body?	<ul style="list-style-type: none"> <li>- not affiliated with a recognised body</li> </ul>	<ul style="list-style-type: none"> <li>- not part of pony club association or other equestrian association</li> </ul>
6. What community or sporting events does the applicant participate in or support?	<ul style="list-style-type: none"> <li>- activities at local schools and kindergartens</li> <li>- open day at Huia Farm Park</li> <li>- School programme at Green Bay Intermediate</li> </ul>	
7. What are the applicant's five year forward plans in terms of participation and involvement in the community?	<ul style="list-style-type: none"> <li>- to continue to provide group lessons and individual lessons</li> <li>- to hold weekly rallies</li> <li>- increase lessons provided</li> </ul>	

151

		<ul style="list-style-type: none"> <li>- to bring in specialist instructors</li> <li>- to increase disabled adult riding groups currently two sessions held in 2006, aim to hold monthly events</li> <li>- to continue to attend events at pony clubs</li> <li>- to continue endurance rides at Woodhill forest as well as club treks and club camps</li> </ul>	
<b>Laingholm Riding Club Incorporated</b>			
<b>Assessment Criteria</b>		<b>Comments</b>	
1.	Is the applicant a volunteer based non-profit group?	<ul style="list-style-type: none"> <li>- incorporated society</li> <li>- not for profit club</li> </ul>	<ul style="list-style-type: none"> <li>- this meets the leasing policy criteria</li> </ul>
2.	Does the applicant have an open membership?	<ul style="list-style-type: none"> <li>- revised membership structure in 2005</li> <li>- planning further changes to membership rights</li> <li>- to ensure transparent and democratic decisions are made with full club involvement</li> </ul>	<ul style="list-style-type: none"> <li>- no details provided of terms of the revised membership structure</li> <li>- intention to ensure transparent and democratic membership – requirement of leasing policy criteria</li> </ul>
3.	What community activities are provided?	<ul style="list-style-type: none"> <li>- intend to hold weekly lessons – will need to find suitable riding area as the land Armour bay is only available for grazing</li> </ul>	<ul style="list-style-type: none"> <li>- Laingholm Riding Club will have limited ability to provide the wider community benefits as this site is limited to grazing. No other site was known to officers.</li> </ul>
4.	Does the applicant provide training or coaching and what is the cost, if any?	<ul style="list-style-type: none"> <li>- not currently due to loss of use of Owen's Green</li> </ul>	
5.	Is the applicant registered or affiliated with a recognised body?	<ul style="list-style-type: none"> <li>- no</li> </ul>	
6.	What community or sporting events does the applicant participate in or support?	<ul style="list-style-type: none"> <li>- participated at various local events</li> <li>- encouraged members to assist in helping with maintaining grazing / riding land</li> <li>- visits to kindergartens at Woodlands Park and Laingholm</li> <li>- rides at Laingholm School gala</li> </ul>	
7.	What are the applicant's five year forward plans	<ul style="list-style-type: none"> <li>- to continue to offer pony rides and other events for</li> </ul>	

A52

	in terms of participation and involvement in the community?	<ul style="list-style-type: none"> <li>- local communities will organise rides and informal trips</li> <li>- will participate in ribbon days and events</li> </ul>	
--	---	--	--

### Armour Bay Riding Academy

	Assessment Criteria	Groups's Comments	Council's Comments
1.	Is the applicant a volunteer based non-profit group?	<ul style="list-style-type: none"> <li>- not yet a registered group</li> </ul>	<ul style="list-style-type: none"> <li>- as the applicant is not yet a formally formed or registered group, this application provides proposals of what is intended to be provided</li> <li>- no details provided of intention for membership structure</li> </ul>
2.	Does the applicant have an open membership?	<ul style="list-style-type: none"> <li>- no existing membership or policy</li> </ul>	
3.	What community activities are provided?	<ul style="list-style-type: none"> <li>- intention to train the best young riders for more advanced equestrian activities</li> </ul>	
4.	Does the applicant provide training or coaching and what is the cost, if any?	<ul style="list-style-type: none"> <li>- intention to provide training</li> </ul>	<ul style="list-style-type: none"> <li>- no details of training intended</li> </ul>
5.	Is the applicant registered or affiliated with a recognised body?	<ul style="list-style-type: none"> <li>- no</li> </ul>	
6.	What community or sporting events does the applicant participate in or support?	<ul style="list-style-type: none"> <li>- to enable young riders without horses to participate</li> <li>- intends to participate in show jumping, dressage, hunter trials in Waitakere</li> </ul>	
7.	What are the applicant's five year forward plans in terms of participation and involvement in the community?	<ul style="list-style-type: none"> <li>- a five year forward plan was not provided</li> </ul>	<ul style="list-style-type: none"> <li>- it is difficult to assess this application without more details of intended activities and without information on a five year plan</li> </ul>

AJB