

10.7 North Piha ARC carpark- middle access. The current signs would be removed.



10.8 North Piha ARC carpark – north end



H26

10.9 North Piha ARC, northern access from picnic area.



11. That curved pedestrian signs ( level 3 ) attached to round posts that designate the start of the access way, be installed at the following beach access ways: ( see appendix table one for sign detail)

11.1 South of the Moana Stream ,on Marine Parade south . The number of formal access ways to be confirmed by the Piha Residents and Ratepayers Assn..



A27

11.2 access way at the northern end of the carpark, opposite 33 Marine Parade south



11.3 Access ways between the start of Marine Parade North and the Piha mid beach toilets, where there are 7 parking bays. Until access ways are formalised in this area, the recommendation is to have signs every 100 metres. This would be best practice as outlined in section 7.1, page 9, in the Aquatic Risk Consultant Report. It is recommended to place two signs at adjacent to parking bay one( closest to corner) , one sign adjacent to parking bay 3 , and one adjacent to parking bay 4. Some fence rails with pedestrian openings will need to be closed, and parking will need to be discouraged in front of hazard warning signs. It is also recommended that 15 metres of carpark just past the corner at Little Lion Rock, be closed off for safety reasons. Currently car s parked there back out of the parking space in to the corner of the road.



A20

12. That all water safety signs have an emergency i.d.symbol , that will assist people who are in a fragile situation, to provide emergency services with a location code. The working party will seek the advice of Surf Lifesaving Northern Region, the two Surf Life Saving Clubs and Piha First Response.

A29

## **Conclusion**

The Waitakere City Council and the Auckland Regional Council have a duty of care, under section 16, Health and Safety in Employment Act 1992, to take all practicable steps to ensure the safety of visitors.

Recently Coroners inquests have tested this duty of care.

Determining what practicable steps are required relies on expert advice. Surf Lifesaving Northern region have provided that expert advice with an aquatic hazard assessment of Piha. They have made recommendations on improving aquatic safety management particularly through the use of hazard management signage, inline with Standard NZ requirements.

The community working party have visited the coastal margins of Piha and debated at length ,on how those expert recommendations will be applied with minimal environmental impact and to best reflect the character of Piha.

The Community working party on water safety signage at Piha, is pleased to present this report.

ASC

# Appendix

1. table of water safety signage location
2. maps of water safety signage location

A3!

sign type	location	height*	width	material	post	name	hazards	surf info	prohibitions	Emerg. ID
vehicle	Bch Vly Rd	1800	900	alum.	150x150	Piha south	B3.14,B2.4,B3.9	B7.21	none	A
vehicle	Domain	1800	900	alum.		Piha mid bch	B3.14,B2.4,B3.9,B3.4	B7.21	none	B
vehicle	Les Waygood	1800	900	alum.		Les Waygood	B2.4, B3.14	B7.21	alc, fires, camping, vehicles	C
vehicle	Piha north ARC	1800	900	alum.		Piha north	B3.14,B2.4,B3.9,B3.15	No Lifeg	none	C
pedestri'n	M Pde Sth ARC	800	400	alum.	100x100	Piha south	B3.14,B2.4,B3.9,B2.7,B3.9	B7.21 +	dogs, fires, alc, camping	tbc
pedestri'n	Opp Piha SLSC	400	800	alum.		Piha South	B3.14,B2.4,B3.9,B3.4	B7.21 +	alc, vehc, dogs, surfb fig.	tbc
pedestri'n	sand ladder	800	400	alum.		Piha south	B3.14,B2.4,B3.9	B7.21 +	alc, dogs, fires, camping	tbc
pedestri'n	mid bch	800	400	alum.		Piha mid bch	B3.14,B2.4,B3.9	B7.21 +	alc, dogs, fires, camping	tbc
pedestri'n	Les Waygood	800	400	alum.		Les Waygood	B2.4, B3.14	B7.21 +	alc, dogs, fires, camping	tbc
pedestri'n	Nth Piha SLSC	800	400	alum.		Piha north	B2.4, B3.14	B7.21 +	alc, fires, vehicles, dogs,	tbc
pedestri'n	Piha north ARC	800	400	alum.		Piha north	B3.14,B2.4,B3.9,B3.15	No lifeg	tbc	tbc
pedestri'n	Piha north ARC	800	400	alum.		Piha north	B3.14,B2.4,B3.9,B3.15	No lifeg	tbc	tbc
ped.post	M Pde Sth	600-800	200	alum.	rnd 250	Piha south	B3.14,B2.4,B3.9	B7.21	tbc	tbc
ped.post	M Pde Sth	600-800	200	alum.		Piha south	B3.14,B2.4,B3.9	B7.21	tbc	tbc
ped.post	M Pde Sth	600-800	200	alum.		Piha south	B3.14,B2.4,B3.9	B7.21	tbc	tbc
ped.post	M Pde Sth	600-800	200	alum.		Piha south	B3.14,B2.4,B3.9	B7.21	tbc	tbc

43

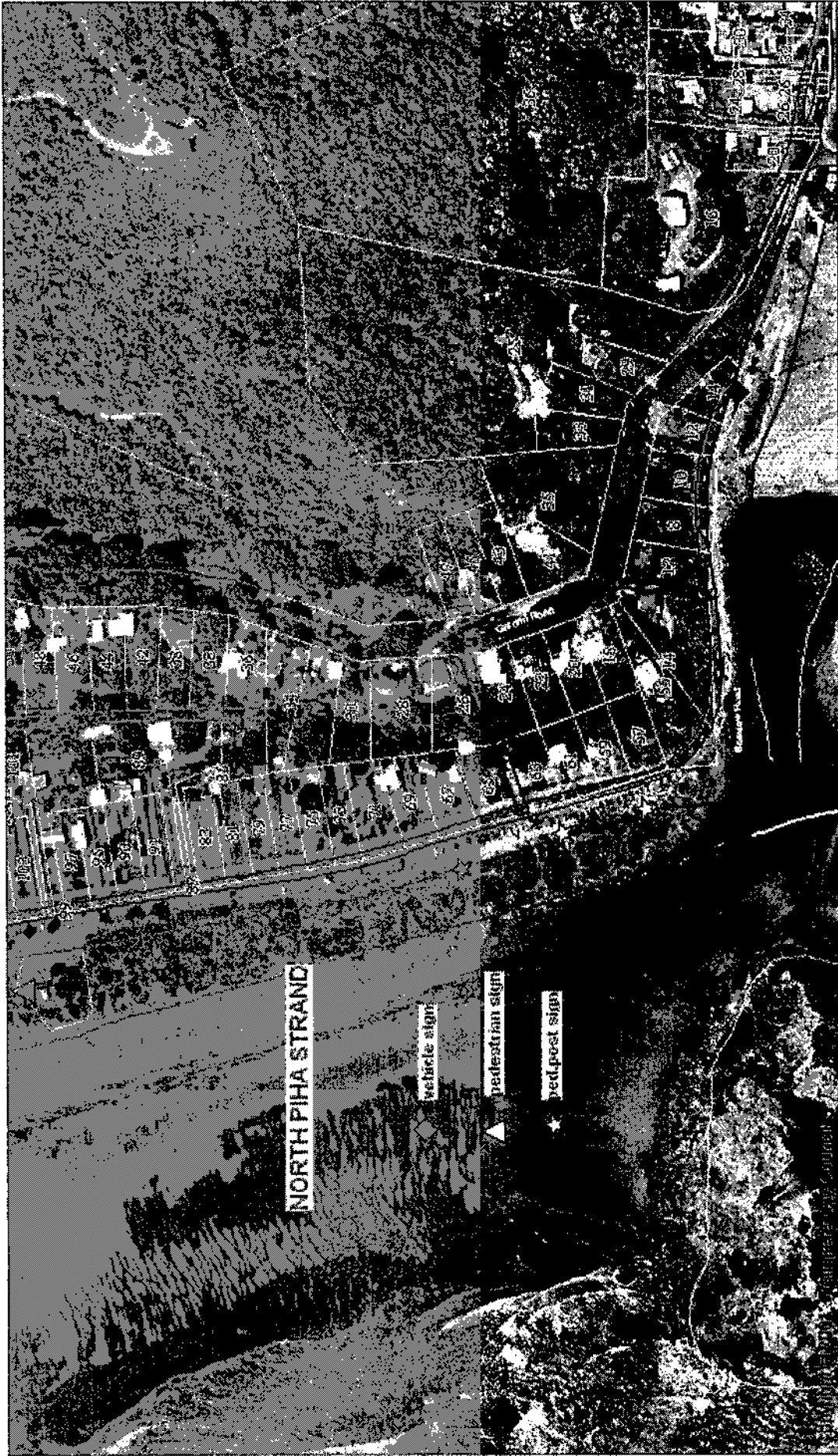
ped.post	M Pde Sth	600-800	200	alum.		Piha south	B3.14,B2.4,B3.9	B7.21	tbc	tbc
ped.post	carpk nth end	600-800	200	alum.		Piha south	B3.14,B2.4,B3.9	B7.21	none	tbc
sign type	location	height*	width	material	post	name	hazards	surf info	prohibitions	Emerg. ID
ped.post	mid bch	600-800	200	alum.		Piha mid bch	B3.14,B2.4,B3.9,B3.4	B7.21	none	tbc
ped.post	mid bch	600-800	200	alum.		Piha mid bch	B3.14,B2.4,B3.9,B3.4	B7.21	none	tbc
ped.post	mid bch	600-800	200	alum.		Piha mid bch	B3.14,B2.4,B3.9,B3.4	B7.21	none	tbc
ped.post	mid bch	600-800	200	alum.		Piha mid bch	B3.14,B2.4,B3.9,B3.4	B7.21	none	tbc
note	* height									
	Excludes height above the ground. Dimensions are for the sign only.									

A32

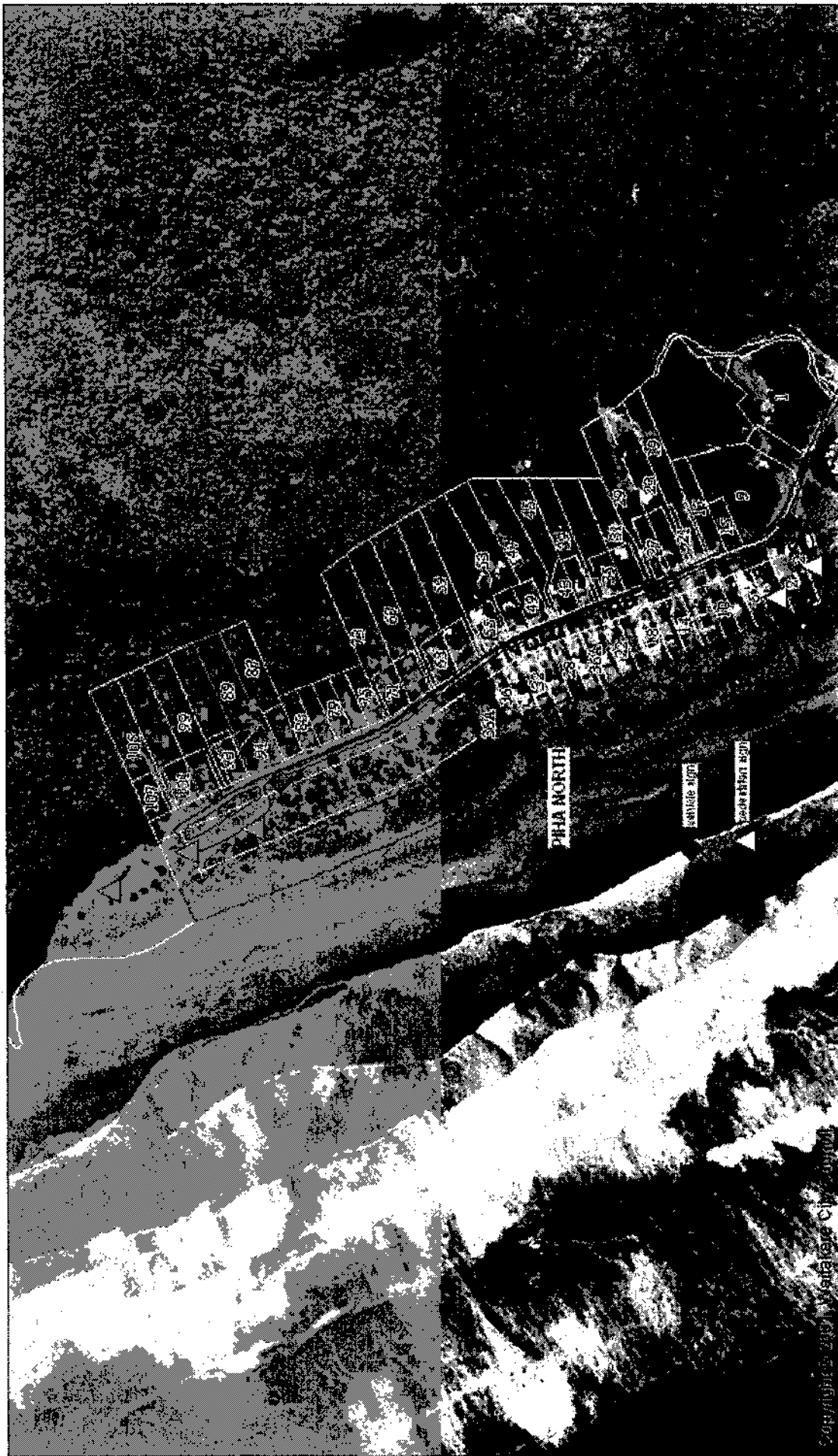
Location maps of proposed water safety signage



A34



A35



A36