

In 1940, the park was taken over by the army until 1943, when the RNZAF took occupancy. At the end of the war in 1945, the park was returned to its former owners and by 1946 it was operating as one of the largest motor camps at the time. On many occasions people were turned away. The first concrete swimming pool was constructed there in 1947. It was 60 feet long and 20 feet wide and was further extended another 40 feet in 1958. Additional pools were added in 1964. By then the name had changed to Redwood Park. Special trains carried people there and at times there were three trains per day in the weekends. Special tickets were issued including fare and park admission. Redwood Park was extremely popular, attracting some 500,000 people per year.

In the 1970's the park hosted New Zealand's first pop concert, 'Redwood 1970'. In 1971, the park was sold and became the Redwood Park Country Club Incorporated as it is today.

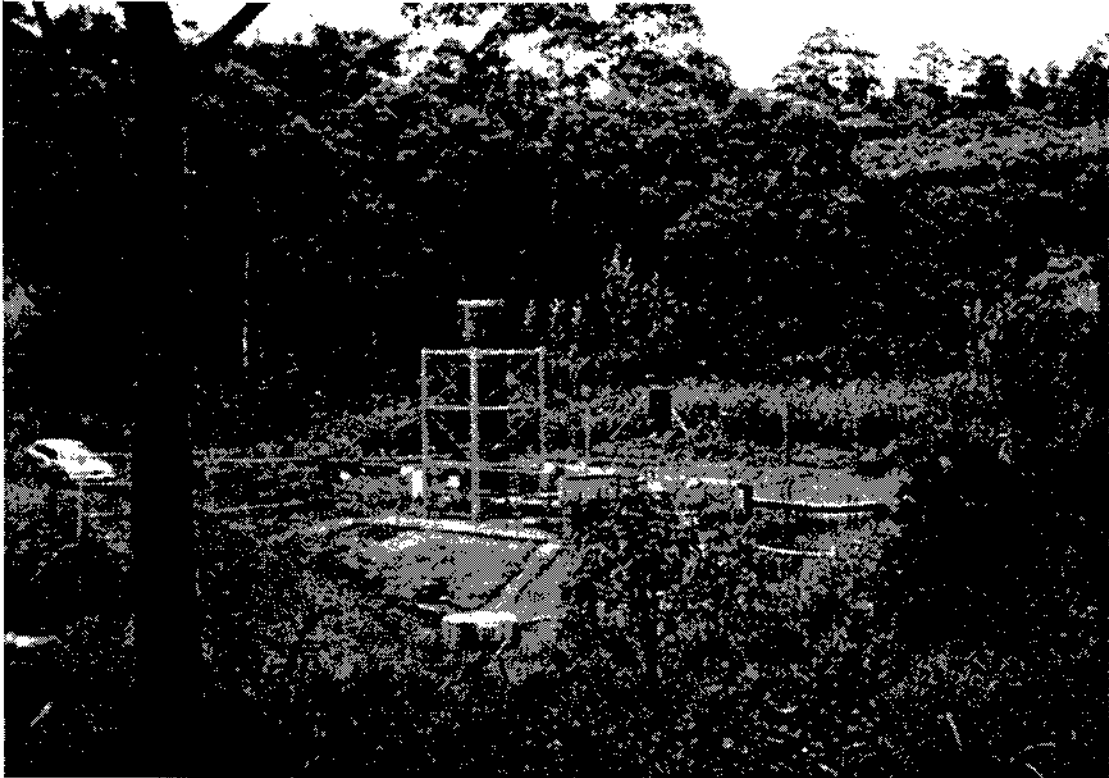
As a result of subdivision, Council later acquired the 20 m esplanade reserve, which included parts of the golf course. This has subsequently been leased back to Redwood Park so that it can continue to function as part of the golf course.

In 1983, the Waitemata City Council acquired a site of some 33.8 ha to the north of the Redwood Park Country Club and Golf Course and Swanson Stream for use as a future landfill. The land use and planning issues were covered by a variation to the Waitemata City Council District scheme. The site of what came to be known as the Kay Road Balefill, was located in a gully between Crows Road, Sunnyvale Road and Kay Road. During the period the landfill was operational (1986-1997), it accepted baled municipal waste collected at the WCC Concourse Refuse Recycling and Baling Station in Henderson, as well as putrescible cleanfill and topsoil.

Since the 1997 closure, Council has placed topsoil to level the surface of the platforms as the bales have settled and also embarked on an extensive programme of planting native seedlings to revegetate the site. As it is the Council's priority to ensure public health and safety as well as to protect the landfill monitoring and control infrastructure and the investment, which they have made in revegetating the site, the site has not been considered suitable for public access.



Billy Joe Site - Below the balefill



Gas Flare - Kay Road Balefill



Wetland - Kay Road Balefill

6.3 Recreation And Use

The reserves are divided into two main categories;

- Green Network Reserves ie bush reserves and stream margins. These have high ecological and passive recreation values and include Swanson Scenic Reserve, Swanson Stream Esplanade Reserves, Kitewaho Reserves, Awhiorangi and Welsh Hills). Kay Road and the Billy Joe Site also fit into this category.

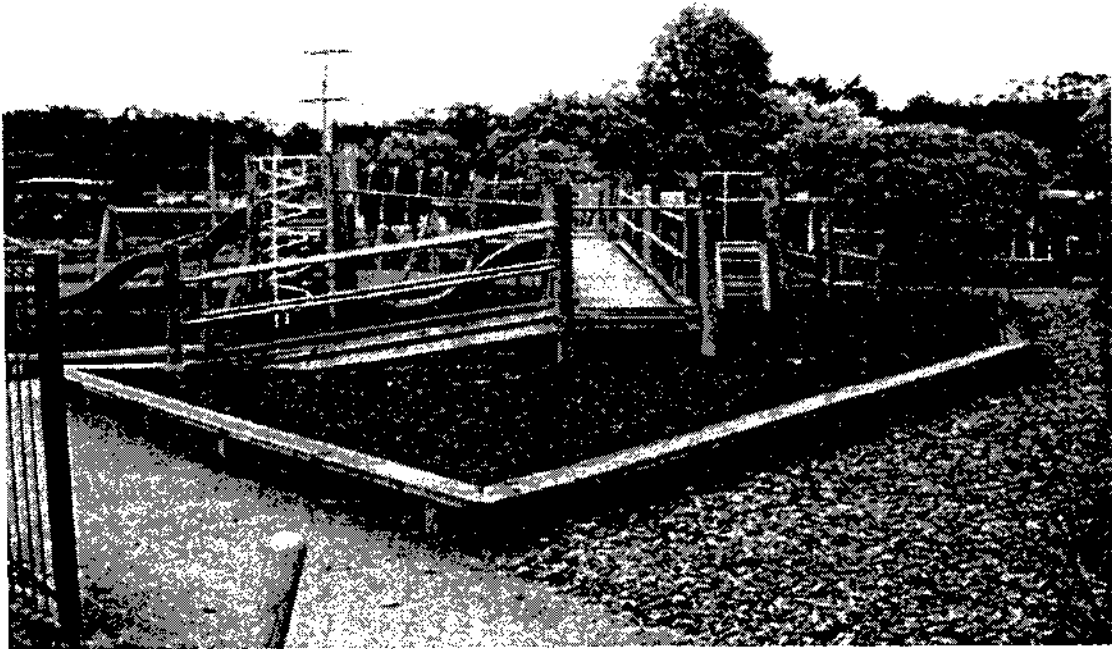


Welsh Hills

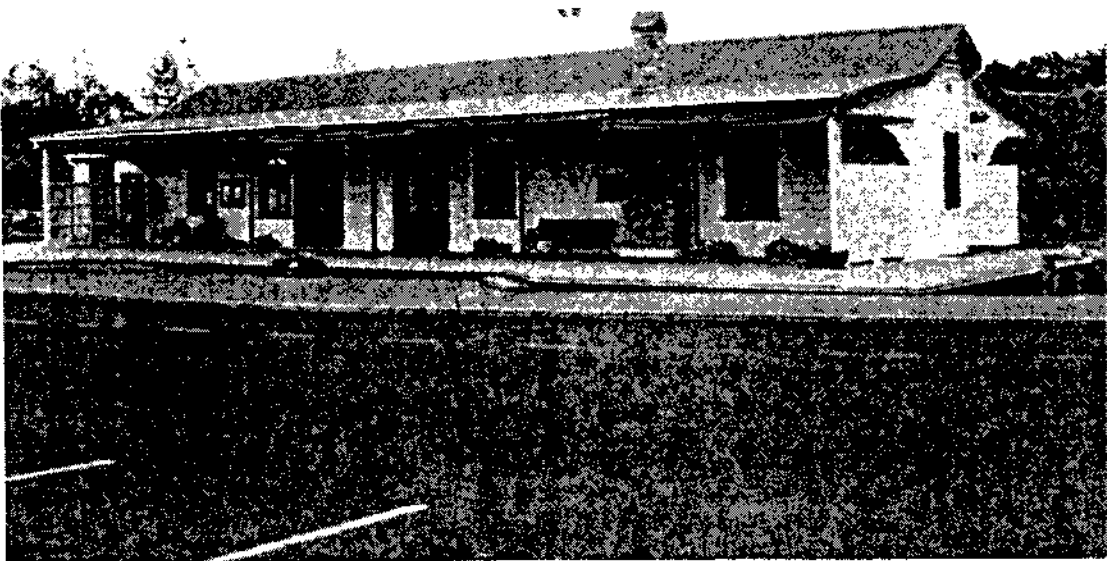


Swanson Stream

- Township reserves ie local purpose community parks. These are highly modified, multi-use urban reserves and include Swanson Station Park, Swanson Oaks, Heritage Park and Robert Knox Memorial.



Robert Knox Memorial Park



Swanson Station

Submissions to the draft Plan indicate that the community values the bush reserves and wishes to retain them as such, with the management emphasis being on weed control and improved access. One of the main issues arising for local residents is poor access and signage. The bush reserves are underused as people don't know where they are. The boundaries between public and private are often not marked and the main entrance to Kitewaho Reserve in particular, requires clear demarcation. Submissions indicate a need for better definition of boundaries, improved access and the implementation of signs and informal walking trails.

The town centre reserves on the other hand, already have a high input of resources and are (about to be) well-developed, especially the Station Park which is frequented by locals and visitors alike. These township reserves have been developed as a result of substantial community input. The traffic flows along Swanson Road are steadily building and raise issues of safety, particularly with the location of the two playgrounds on opposite sides of the road. Robert Knox Memorial Park caters for a younger age group, and is thus complementary to the Station Park playground, which is used by older children.

Recently, an issue has arisen over the placement of parking restrictions in the Swanson Station Park car park. There are currently 43 parking spaces in the carpark, none of which have been formally allocated. These parking spaces are intended to serve all reserve users which include café users, play ground users and station users, including Park n' Ride. Council owns the land and is responsible for the maintenance of the reserve and carpark. The Railway Station Society, which is responsible for the development of the reserve, owns the café building and leases the footprint. When the Society applied for Resource Consent for the café, they were required to show that they could provide 14 carparks. It is important that reserve facilities such as the carpark serve all reserve users and do not favour any particular group. A monopoly of the carpark by park n' riders, could prevent other reserve users from accessing short-term parking during the day. Therefore, it may be necessary to allow some parking restrictions to ensure that all reserves users are catered for and that parking does not favour any one group.

Several submissions support the development of sporting facilities at Swanson Scenic Reserve. There are suggestions for a tennis court complex, basketball court and skate park to be developed on this site, including a facility with night lighting.

Swanson is currently reasonably well-provided for, with reserves relative to the size and distribution of the local population. The eventual addition of Kay Road and the Billy Joe site, will add another 59 ha to the existing reserves network.

The Swanson Structure Plan allows for the creation of a further 144 additional sites within the Structure Plan area. While there are already enough reserves in Swanson to cater for this expected growth, the existing reserves network is dominated by Green Network reserves. What is lacking are sports and recreation facilities, in particular those for youth.

In addition, the Reserves Standards Report identifies Swanson and other foothill areas as the future rural-residential areas of the City. This report identifies the need for a Community Domain of around 2-4 ha per rural foothills catchment to provide space for informal active sports and a play area, as well as amenity planting.

In some aspects, Swanson Station Park fulfils the function of a Community Domain. It is centrally located, it provides a focus and gathering place for the community, and

is rich in amenities. However, at only 4000sqm, it is deficient in terms of being able to house a community hall or provide sufficient open space for sports. Sports activities can be pursued at the nearby Ranui Domain - but this is not the focus of the Swanson Community.

Options being discussed are:

1. The Swanson Station Reserve could be extended and enlarged by the acquisition of 2- 3 ha of land in the Penihana Block as part of reserve contribution through subdivision. This would then create a true local domain or a community hub catering for most local needs, including informal active sports, close to the centre of the village.

2. If no new land is acquired, the community hall could be located as proposed on the adjacent Heritage Park and Swanson Scenic Reserve be developed for informal sports. This would mean that the facilities would not be located together. However, the Scenic Reserve has many features that would make it ideally suited for the development of active recreation facilities. At present this reserve is under-utilised, the main users being film companies, scout groups and dog walkers. This reserve is divided in two, the northern side of the stream being DOC Scenic Reserve, under the control and administration of Council, and the southern side being WCC Recreation Reserve. This southern side is adjacent to the carpark, has a long road frontage with good visibility from the main road, is sheltered with an attractive bush backdrop, and has an area of flat open grass suitable for the development of courts. In addition, it is within walking distance of the town centre, while being large enough to contain a facility removed from immediate neighbours.

The classification of this part of Swanson Scenic Reserve as Recreation Reserve, under the Reserves Act, allows for this kind of development and use.

The development of youth or sporting facilities within the recreation reserve would also complement the proposal made by Ritchies Coachlines for a shared-use arrangement of the carpark, as discussed in Part 5.3 of this Plan. If facilities were to be developed in the reserve, the existing carpark would need upgrading, as it is boggy in the winter. If the carpark is upgraded to 40 sealed spaces, the shared arrangement proposed could benefit all users, as the sports court would be more likely used in the evening and weekends, with Ritchies use greatest during the day. The additional use of the carpark would provide surveillance for the reserve.

The bush reserves have the potential to be better utilised as 'local' reserves by neighbouring residents. The addition of good walking tracks, bridges in the esplanade reserves, seats and signs could facilitate use of the reserves by adults and children alike. Swanson Scenic Reserve (north side) and Kitewaho in particular, would attract much greater local use from the development of good access and walking trails. Greater access and use is likely to increase local ownership of the reserves.

Awhiorangi, Kitewaho Plantation Reserves 1 and 2 and Welsh Hills are bush reserves that drop steeply away from the road and currently have no developed access. Their value relates to the integrity and quality of their vegetation and their contribution to protecting the headwaters of streams. Developing access to these reserves is likely to compromise their ecological values by increasing soil erosion and the introduction of weeds. In addition, the provision of formal accessways into these reserves would provide limited amenity value, as there are no linkages to other reserves, and would require some bush clearance and disturbance in order to create

walking tracks. Increased pedestrian traffic would also be likely to facilitate the spread of weeds into areas that are currently relatively weed-free.

Redwood Park Golf Course has thousands of visitors per year, mostly from Waitakere City. This privately owned and managed park provides a well-used and high quality recreation facility available to the local and regional public. This facility is complementary to the recreational opportunities offered by public parks in the area. The layout of the golf course currently includes the use of parts of the Swanson Stream Esplanade Reserve. Redwood Park's use of the esplanade reserve has been formalised in a lease, which is attached in the appendices.

Redwood Park Country Club is a good neighbour to the Swanson reserves, and the golf course is a desirable land use for this area (in comparison to residential development for example). The large area of open space assists in filtering and slowing stormwater runoff, acts as a buffer to the township and road, offers an opportunity for effective weed control, and the site has few impermeable surfaces and no stock. On the other hand, negative impacts include encroachment of golf course greens upon the designated esplanade reserve and, due to the fact that any reserve users would be exposed to flying golf balls, there is no opportunity to develop public access to the stream and its margins. A pile of wood and earth has been dumped adjacent to a large bamboo infestation and in many places the esplanade is overgrown with weeds. The Swanson 2000 consultation recorded community aspiration for the development of a walkway along the stream.

The Swanson Structure Plan Reserves And Public Access Draft Plan shows a link between Swanson township and Crows Road through Swanson Scenic Reserve. It also provides for a walkway along the northern margin of Swanson Stream, linking the Scenic Reserve with Parklands Ave and Kay Road.

While the eventual development of a public walkway along the northern bank of the Swanson Stream Esplanade Reserve would be desirable in terms of the Green Network and the Parks Strategy, it also raises some concerns. The northern margin of Swanson Stream is well-vegetated and steep in places. Establishment of a durable walking track along this section of stream would be likely to require significant vegetation disturbance and careful engineering. Nor does Council own the entire riparian margin on this side. The southern bank of the Swanson Stream is better suited to the development of a pathway, as it is already owned by Council in its entirety and has been classified as Esplanade Reserve. In addition, it has lower ecological values with little native vegetation, and a much flatter contour. However, the current design of the golf course incorporates the use esplanade reserve land so a walkway on this southern side of the stream would compromise the integrity of the course. In addition, without a clear boundary demarcation, (such as a fence), concerns are likely to arise regarding trespass onto private property and the safety of walkway users from flying golf balls.

The development of this stretch of the walkway therefore remains along term-goal. In the interim, there is an opportunity to revegetate this stretch of the riparian margin and a section of the walkway can be developed along the northern bank of the Swanson Stream through Swanson Scenic Reserve, providing access to the Scenic Reserve from Birdwood Road.

There is also an opportunity to develop a future pedestrian walkway up from Parklands Avenue, through the Billy Joe site and the balefill to Kay Road or Crows Park to Crows Road. The provision of this walkway would establish an important ecological linkage from the Swanson Stream up into the bush along the edge of the

Billy Joe Stream through the Kay Road balefill and from there linking with the bush in Crows Park. However, as this would lead up to the balefill, it cannot be implemented until the balefill is open to public access or fenced off from the Billy Joe site.

Horse riding is a major recreational focus of the local community. The potential for developing a bridle trail is addressed in the Swanson Draft Reserves And Public Access Plan. The Plan concludes that the 'Structure Plan area is quite strongly divided by the main roads which run east to west through centre of the catchment and the steep terrain to the north of Swanson Village. Together these factors make it difficult to achieve safe bridle access between the northern and southern portions of the catchment'. In the southern part of the Structure Plan area, there is the opportunity to develop a relatively comprehensive bridle trail network, which would provide a reasonably long and varied circuit for riders. However, in the northern part of the catchment, which includes Kay Road and Crows Reserve, there is less potential for developing a suitable trail.

In general, the ecological values of the Swanson Reserves are too high for them to be suitable for the development of bridle trails. Bridle trails are not recommended in areas of high quality bush due to the compaction of the trail surface resulting in damage to ground dwelling species and drainage profiles. They need to be wide and are costly to maintain. Grazing can potentially damage vegetation and horse faeces are a well-recorded source of weed seeds, which easily establish along the side of the trail. Crows Park is currently being reclassified as a Scenic Reserve, as recommended in Objective 8.5 of the Crows Park Management Plan. Bridle trails are not a permitted activity in a Scenic Reserve.

The combined adjoining areas of Crows Park, Kay Road balefill and the Billy Joe site provide a large area of high quality and regenerating native bush with significant natural values. The Kay Road site is currently fenced off and is likely to remain so for some time, with a high fence along the roadside boundary. Access to Crows Park and the Billy Joe site is also restricted. The length of the boundary for these combined reserves is not long in proportion to their total mass. Moreover, most of this boundary is along local roads and there are few neighbours.

These factors, in conjunction with the significance of the vegetation associations within the area would make these reserves ideal for the development of a 'mainland island' type proposal in the future. Such a proposal could still provide for recreational access.

A critical factor in the success of such a proposal, although potentially of regional significance, would be the support and enthusiasm of the local community for the project.

6.3.1 Facilities

A number of public facilities are located within particular Swanson reserves. These facilities and the reserves they occupy are outlined in the table that follows;

INDEX OF RESERVES ASSETS

No	Reserve Name	Bins	Path	Table	Playground	Seat	Pergola/ Rotunda	BBQ	Bridge	Carpark	Court	Sign	Artworks
1	Swanson Scenic Reserve	1								1		1	
2	Swanson Station Park	6	3		1	13				2			5
3	Swanson Stream Esplanade												
4	Robert Knox Memorial Park	1			1	2						1	
5	Swanson Stream Reserve												
6	Awhiorangi Reserve												
7	Kitewaho Plant Reserve												
8	Kitewaho Plant Reserve 2												
9	Kitewaho Reserve												
10	Welsh Hills Reserve												
11	Kay Road Balefill												
12	Billy Joe site												
	Swanson Oaks (tbd)						1						
	Swanson Heritage Park (tbd)												

6.3.2 Leases

There are only two leases currently in place for the buildings and facilities in the Swanson Reserves:

Swanson Railway Station Trust

A lease was granted to the Swanson Railway Station Trust for the use of the property beneath the Railway Station building. The lease acknowledges that the building is owned by the tenant. The lease, which is under the Local Govt Act, commences on 1st December 2000 and runs for an initial term of five years, after which there will be two further rights of renewal, each for periods of five years. The renewal dates being December 2005 and December 2010 allowing for a total potential lease of fifteen years with a final expiry date of December 2015.

Redwood Park Golf Club

Redwood Park has a lease for use of the Esplanade Reserve adjacent to the Swanson Stream for a period of five years, expiring in 2007. The terms of the lease require that all areas are to be maintained weed free and that they ensure that any indigenous flora or fauna on the land is protected.

The full lease documents are included in Appendix 3.

PART 2 Objectives and Policies

Part Two of the Management Plan identifies the major issues arising from the investigation of the context and background in Part One. Part 2 outlines the Objectives and Policies required to effectively guide the future development and management of the reserves in response to those issues. Details of how the Objectives and Policies are to be implemented are included in each section.

The Concept Plans and Table of Works are laid out in Part 3 of the Plan.

1.0 Vision Statement

The Swanson Reserves will be managed to protect and enhance the unique natural character and ecological values of the Waitakere Foothills environment, whilst providing for the appropriate recreation, use, access, education and enjoyment of the Swanson and, where appropriate, wider community, now and into the future.

2.0 Recreation, Use And Enjoyment

To increase the use and enjoyment of the reserves by the local and, as appropriate, City-wide communities and to maximise the opportunities for appropriate, sustainable and high quality recreational activities in a way that is consistent with the purposes and values of the reserves.

Policy 2.1

To ensure that the reserves are managed for the maximum use and enjoyment of the local and City-wide communities, now and into the future.

Implementation

- Engage in ongoing partnership with the local community to manage and develop the reserves to fulfil community needs and aspirations.
- Ensure the township reserves and the grassed area of Swanson Scenic Reserve are developed and managed to provide a range of high quality amenities as required by the local community in order to take pressure off the ones with higher ecological values.
- Develop the grassed area of Swanson Scenic Reserve with amenity planting and pathways to cater for exercise, picnics and outdoor events.
- Investigate the possibility of acquiring additional access (through subdivision contribution or other means), to the north and south extensions of Kitewaho Reserve in order to facilitate access to the reserve.
- Investigate the feasibility of developing a small, local-use, open recreation area for BBQs and children's play at the entrance to Kitewaho Reserve at the end of Kitewaho Road, if this land is acquired for access to the reserve.
- Ensure that walkways, boardwalks and bridges and seating are developed within the reserves to facilitate access a range of habitats and ecosystems, without impacting on the most sensitive.
- Work with the local community to investigate options for the establishment and development of a local Domain.
- Investigate the development of a local Domain through the acquisition of land in Penihana subdivision.
- Support the establishment of a combined tennis/basketball facility in Swanson,

possibly, to be located either in the proposed local Domain or in Swanson Scenic Reserve.

- Support the development of recreation facilities for youth, including skate facilities, in conjunction with local youth population.
- Ensure that Kay Road balefill is developed and managed in a way that will best serve the needs of the local and wider community when it becomes a reserve.
- Ensure that the balefill site, the Billy Joe site and Crows Park are collectively developed and managed to ensure the best outcome for the community and the environment.
- Install signage at the reserves entrances that indicates clearly the range of opportunities available in the reserve.

Policy 2.2

To facilitate public access between and within the reserves to provide logical linkages and passive recreational opportunities.

Implementation

- Develop an all-weather walkway through the open grassed area of Swanson Scenic Reserve.
- Investigate options for the staged implementation of an informal walkway that will eventually go from Parklands Road along the Billy Joe Stream and through the Kay Road Balefill site and Crows Park to Crows Road.
- Work with Redwood Park Golf Club and the local community to investigate options for the eventual linkage of Swanson Scenic Reserve and Parklands Road by an informal walkway through Swanson Stream Esplanade Reserve and Swanson Scenic Reserve encompassing either or both banks of Swanson Esplanade Reserve as appropriate. Ensure that the development of any such option be undertaken in a way that would not require the Redwood Golf Club to vacate existing leased land or remodel the course unless agreed to by the Club.
- Allow for the extension of the current lease of Swanson Stream Esplanade Reserve on a five yearly basis (or otherwise if agreed by both parties to the lease), until such time as the community aspires to greater public access and or the development of a walkway in the esplanade reserve, bearing in mind that Swanson is a City-wide Green Network stream.
- Ensure that Council purchase the missing segment of riparian margin along the northern bank of the stream for esplanade reserve purposes should the opportunity arise.
- Develop an informal bush walk through Kitewaho Reserve that links to the existing and proposed road entrances and encompasses a range of experiences without compromising ecological values.
- Allow for the possible future development of an informal bush walk through Welsh Hills Reserve, only at such time as there is community demand for such access into the reserve.
- Install appropriate signage to indicate linkages, access and walkways.

Policy 2.3

To provide for a variety of recreational pursuits while respecting the needs and values of all users.

Implementation

- Ensure that recreational structures, except for jetties and bridges, are kept clear of the riparian margins.
- Provide toilets at appropriate locations within the reserves only where it is found

they are needed.

- Have regard for the fact that the majority of the reserves function as local and neighbourhood reserves, while the Swanson Stream Corridor functions as a City wide reserve.
- Discourage the use of the reserves and their facilities by any one group or activity in a manner that prevents or restricts use by other user groups.
- Ensure that the reserves are developed in such a way that allows them the flexibility to cater for future needs of the local population.
- Support any activities and events occurring on reserves that encourage a sense of community and community ownership.
- Promote natural values and sustainability, as summed up in the Eco-City vision.
- Promote initiatives and activities in the reserves that promote cultural diversity.
- Encourage clubs leasing land and buildings to enter into joint arrangements in accordance with the Community Assistance Policy, to enable the efficient use of facilities by a range of groups, including youth, older people, women and all cultures.

Policy 2.4

To increase opportunities for people to enjoy nature on the reserves.

Implementation

- Develop informal walkway/nature trails in the bush areas of both Kitewaho Reserve and Swanson Scenic Reserves that allows access to the natural features of the reserve without impacting on their values. Include informal seating in appropriate locations.
- Ensure that a range of walkways are developed to cater for different user groups, including disability access and access for prams.
- Support the use of boardwalks and viewing platforms in appropriate locations within the parks budget.
- Provide facilities for visitors to the reserves, such as seating, bbqs and picnic tables, in appropriate places to enable them to enjoy the reserves without impacting on the natural values.
- Avoid the development of pedestrian access in those areas where it is likely to impact on ecological values, for example, where it is likely to cause soil erosion on steep or unstable sites and weed infiltration in areas of high quality vegetation.
- Ensure that any bridle trails are developed through areas where they will have least impact on ecological values, and only where they are allowed for under the reserves classification, ie not in those reserves classified as Scenic or Esplanade reserve.

Policy 2.5

Increase public understanding of environmental values and processes.

Implementation

- Investigate options for the eventual development of the Kay Road Balefill site that will maximise opportunities to educate visitors about the history of the landfill and and promote understanding of remediation processes.
- Support any initiatives within the reserves that increase public understanding of the natural processes occurring within the reserves and that meet the objectives and policies of this Plan.
- Investigate options for the eventual development of Kay Road balefill site as an educational 'mainland-island' type reserve.
- Ensure that the boundaries between ecological restoration areas and the areas marked for active recreation, are clearly identified and easily adhered to by all

user groups.

- Encourage the use of local artwork to identify existing natural habitats and ecosystems (as well as potential habitats and systems), and highlight biodiversity issues within the reserves.
- Involve the local community in any restoration efforts, including planting, pest control, weed eradication and the reintroduction of native species.
- Encourage stream monitoring and riparian restoration programmes with local schools, ensuring that projects are carried out using approved Health and Safety Standards in areas where minimal damage can occur.
- Encourage the use of signs to highlight the work of Council and Community environmental initiatives including weed and pest control, revegetation, stormwater remediation and flood control.
- Install signs to identify scarce and locally uncommon native species in the reserves where this is likely to have a positive impact on the species population.
- Ensure that active recreation areas are those with lowest ecological values.
- Encourage the use and enjoyment of the reserves for outdoor events, gatherings and exhibitions that celebrate and complement the natural environment.

Policy 2.6

To provide a safe environment for reserve users.

Implementation

- Implement "Safer Design for the Green Network: Design Guidelines" to ensure that buildings, facilities and plantings are design and maintained in a way that minimises safety concerns and maximises surveillance.
- Assess lighting requirements and install if required at key locations.
- Maintain all play equipment in accordance with NZS 5828 and Council Safety Standards and all buildings and structures shall comply with the Building Code.
- Allow sun shelters to be constructed above play areas as necessary.
- Provide shade by way of trees or other structures around open grass spaces and seats for reserve users.
- Ensure that visibility is maintained wherever possible to promote safety within the reserves.
- Liaise with neighbouring properties to encourage the construction of low, permeable and where possible no, fences adjoining the reserves.
- Encourage the use of gates and other accessways into the reserves (other than Kay road) from private properties adjoining the reserves to encourage access and use as appropriate.
- Wherever possible, ensure that knolls, ridges, viewing points and other of areas of potential visibility within the reserves are kept open.

Policy 2.7

To provide for short term special events in appropriate locations in the reserves.

Implementation

- Allow special cultural events and ceremonies to be held in the reserves where they do not negatively impact on the natural values of the reserves or the reasonable expectations of neighbours.
- Allow for the placement of structures for temporary installations and events in reserves where they do not negatively impact on the natural or recreational values of the reserves or the reasonable expectations of neighbours.
- Proposals for special events will be assessed against the following criteria:
 - Events must be of public interest and value;

- There must be no conflict with the reserves values;
 - There must be no permanent occupation or utilisation of any part of the reserve;
 - There must be no conflict with any other Waitakere City Council policies, including bylaws;
 - At the conclusion of the event, the reserve shall be reinstated to its condition prior to the event.
- There must be full compliance with all the conditions Council attaches to any permit allowing the short term special event, otherwise a Resource Consent application will be required.

Policy 2.8

To provide clear and appropriate guidelines on dog control in reserves.

- Restrict access for dogs within the boundaries of those reserves classified as Scenic Reserves.
- Where no specific instructions are given regarding the management of dogs in the reserves, Council by laws regarding dog control will apply. Refer to Council's Dog Control Policy, March 1997.

3.0 Ecological Values - Biodiversity

Several of the reserves have significant flora and fauna values, some of which are recognised as Protected Natural Area (PNA) and by the Waitakere District Plan. Lack of developed public access, their isolation and location as part of more substantial ecosystems have resulted in the Swanson bush reserves containing a wide variety of vegetation associations with relatively low weed impact. In addition, their proximity to the Ranges has allowed them to function as part of a wildlife corridor, especially for larger transient species. Of particular note, are the presence of such nationally threatened species as kereru, the endangered Giant Kopuku and the regionally threatened *Astelia grandis*.

Objective

To recognise and protect the significant native biodiversity within the reserves. In particular, give priority to those ecosystems that support threatened species, but also including all indigenous flora and fauna in the reserves.

Policy 3.1

To identify and protect all regionally and locally significant species.

Implementation

- Locate and identify all populations and habitats or potential habitats, of regionally and locally significant species within the reserves.
- Work with DOC and the ARC to establish Conservation Plans for all populations and habitats of regionally significant species within the reserves.
- Install signs in reserves identifying the presence of significant biodiversity where appropriate.
- Ensure that all weed and pest programmes developed for the Swanson reserves provide appropriate protection for any populations or habitat of significant native biodiversity.
- Ensure that contractors working in reserves are aware of the location and nature of sensitive areas.
- Work with the community, and in particular local schools, to establish local care programmes to monitor and protect significant species and their habitats.

- Ensure that riparian restoration in the catchment of the Swanson Stream protects and enhances the habitat for populations of native aquatic species including Banded Kopuku.
- Ensure that the local population of *Astelia grandis* in the Kay Road balefill wetland is protected.

Policy 3.2

To recognise and protect the native riparian and regenerating vegetation of the reserves.

Implementation

- Establish and maintain a healthy, intact, weed-free vegetation buffer where possible, as a key management requirement for the protection of regenerating native vegetation.
- Ensure that effective weed control is carried out along the roadside margins of bush reserves.
- Work with Project Twin Streams, Weedfree Waitakere Trust, Redwood Park Golf Club and the local community to establish and manage areas for ecological restoration within the riparian margins of Swanson Stream Esplanade Reserve.
- Work with Project Twin Streams and Redwood Park Golf Club to design a programme of appropriate riparian planting that will enhance the natural values of Swanson Esplanade Reserve without impacting on the functioning of the golf course.
- Prevent the spread of weeds from the riparian margins of Swanson Stream Esplanade Reserve into the surrounding bush, especially of Swanson Scenic Reserve.
- Seek the involvement of the local community in the ongoing revegetation and vegetation management of the reserves.
- Ensure that, wherever possible, all native species used in vegetation restoration within the reserves are locally eco-sourced in accordance with Council's Ecosourcing Policy.
- Ensure that any programme of riparian planting within the reserves is in accordance with the ARC Riparian Planting Guidelines.
- Ensure that all significant vegetation in the reserves is listed and protected under the District Plan.
- Liaise with Aftercare to ensure ongoing Parks input into the implementation of revegetation and weed control programmes in the balefill site.

Policy 3.3

To improve the value of the Swanson foothills as part of an ecological corridor between the Waitakere Ranges and the coast and highlight the goals of the Green Network.

Implementation

- Create a wildlife corridor of native riparian vegetation along the Swanson Stream with a minimum width of 5 m and upto 20 wide, taking into account the requirements of the Golf Course.
- Manage the parks and esplanades as buffers to the riparian margins to establish an urban greenway.
- Encourage the use of appropriate selected areas to serve as corridors to aid in the natural dispersal of invertebrates and other native species from less disturbed and more species rich habitats, (eg Crows Park, Swanson Scenic reserve).

- Manage the bush and esplanade reserves located adjacent to Swanson Stream, (including the Billy Joe site, Kay Road Balefill, Crows Park and Swanson Scenic Reserve) as a continuous strip of open space for ecological and human enjoyment.
- Manage the Kitewaho Plantation reserves, Welsh Hills and Awhiorangi reserves primarily for their ecological values rather than for public access.
- Implement a programme of public education to highlight the goals and work of the Green Network through the use of educational signage and community participation and ownership in the reserves.
- Encourage community projects and the use of artwork and installations within the reserves that highlight the goals of the Green Network.
- Work with neighbouring private landowners adjacent to the reserves to stop the illegal dumping of garden waste and garden escapees in the reserves.
- Work with private landowners living along Birdwood Road and backing onto the Swanson Esplanade Reserve to control weeds, remove encroachments and revegetate the riparian margin below their properties on the south bank of Swanson Stream.

Policy 3.4

To establish and improve habitat diversity for native birds and invertebrates.

Implementation

- Increase the range and availability of habitat for native species by improving vegetation diversity, complexity, structure and health.
- Work with Weedfree Waitakere Trust and the local community to establish and manage areas for ecological restoration.
- Support initiatives to improve the quality of the Swanson Stream and its tributaries as a habitat for native aquatic species.
- Replace the exotic species along stream banks with evergreen native non-invasive species that will provide habitat for insect species with aquatic larvae.
- Where possible, avoid the use of total clearance of weed infested scrub areas before revegetation to ensure that some habitat for invertebrates is retained.
- Allow stumps and logs of large trees to rot *in situ* where appropriate.
- Work with the local community and landowners adjacent to the reserves to develop a strategy to minimise the impact of feral and domestic animals in the bush and esplanade reserves.
- Ensure that all precautions are taken to minimise the risk of fire in bush areas.
- Where appropriate, choose native species that are food source for native fauna and that are naturally occurring in the foothills environment, for amenity planting in the township reserves and street trees in Swanson village. Wherever possible, use eco-sourced plants.
- Ensure that all Contractors carrying out work within the reserves fully comply with the provisions of the Auckland Regional Council's RPMS which is a legislative requirement under the Biosecurity Act 1993.

Policy 3.5

Establish a monitoring programme to evaluate the progress and success of riparian revegetation on Swanson Stream and to identify ongoing maintenance and management requirements.

Implementation

- Work with Project Twin Streams to establish a monitoring programme for riparian weed control and revegetation to identify ongoing management and

maintenance requirements.

- Replace dead plants as necessary.
- Encourage the participation of local schools and community groups in the monitoring and management of riparian revegetation.

4.0 Cultural Heritage and History

4.1 Maori Cultural Heritage

The Waitakere Foothills including Swanson, were never favoured for settlement by Maori due to that they were heavily forested, with a southerly aspect and poor soils. However, the area was significant as a thoroughfare. Major walking trails covered the ridges and stream corridors. These trails linked to other important food gathering and portage ways in surrounding areas of the Waitakere Ranges, the west coast and the Waitemata and Manukau Harbours. All the waterways included in this Plan have significance to Maori as taonga. Moreover, the Swanson Stream itself was a prime waterway and has significance as such.

The mana whenua of the area is held by Te Kawerau a Maki. Research and investigation by Te Kawerau a Maki is currently being undertaken on the history of the area and identification of archaeological sites and/or Waahi tapu sites and possible interpretation in order to implement the policies set out in this Plan.

Objective

To recognise, protect and, as appropriate, promote the Maori cultural and historical values of the Reserves and their wider catchment, and to work in partnership with iwi on the management of issues of significance on the reserves.

Policy 4.1.1

Recognise and provide for the protection of any site or place of archaeological or spiritual significance associated with the Reserves.

Implementation

- Liaise with iwi to identify all sites and areas on the reserves that are of significance.
- Undertake archaeological assessments prior to any work involving terrain modification being undertaken within the reserves, including planting, fencing and power undergrounding.
- Liaise with Te Kawerau a Maki and Ngati Whatua over any issues associated with Maori archaeological sites.
- Provide District Plan protection for all identified and recorded archaeological sites.
- Support the meeting of iwi objectives in reserves, where they do not contradict the objectives and policies of this Plan.
- Support any activities that raise awareness of tangata whenua issues, such as kaitiakitanga, tribal history of the area.
- Support the use of historical cultural and ecological interpretation, such as signage or artwork with information of historical relevance, or explaining the traditional uses of certain plants.
- Support the use and enjoyment of the reserves for any activities consistent with Maori culture, such as Hangi and Kapa Haka as appropriate and where they meet the policies and objectives of this Plan.
- Discourage the introduction of additional elements or structures that detract from or degrade the existing Maori cultural values of the reserves.
- Identify appropriate sites in the reserves, for the location of pou-whenua.

Policy 4.1.2

Provide for the customary use of native flora by Te Kawerau a Maki and local Maori groups.

Implementation

- Implement planting programmes, in consultation with Te Kawerau a Maki, that include plants for customary use such as for arts, *rongoa* (medicinal), ceremonial and food purposes where they have no negative impact on ecological values.
- Support the implementation of *pa harakeke* planting, ie sustainable flax collection for customary use, such as medicine or weaving.
- Ensure that any cultural harvesting of plants is consistent with the Draft Cultural Harvesting Protocols.
- Ensure that the sustainable collection of plant materials is carried out with prior consent of the Parks department.

Policy 4.1.3

Involve iwi in the design and management of reserves.

Implementation

- Consult with iwi in the design and management of the reserves, particularly in regard to any proposed developments within reserves and the location of structures.
- Consult iwi over management of priority restoration sites and any specific programmes to reintroduce native species.
- In consultation with iwi, highlight any areas of tapu and investigate possible options, where appropriate, to discourage public access to those areas.

4.2 Non-Maori Cultural Heritage

Swanson has a rich history of European settlement. This history is inextricably tied to the landscape and its processes. The Waitakere foothills environment, with its steep terrain, streams, native bush and poor soils has been a defining influence on the pioneering history of Swanson. The natural environment has shaped the culture of Swanson as much as the culture has influenced it. While there are not many sites of specific historical significance to Swanson within the parks included in this Plan, this historical relationship with the landscape can be viewed and celebrated in the reserves.

Objective

To recognise, protect and, as appropriate, promote the European cultural and historical values of the reserves, and to work in partnership with the west Auckland community on the management of issues of significance on the reserves.

Policy 4.2.1

To recognise and provide for the protection and interpretation of any site or place of historical significance associated with the reserves.

Implementation

- Identify and record historical sites and heritage trees located in the reserves and ensure appropriate protection of such sites in consultation with the Historic Places Trust and West Auckland Historical Society.

- Ensure appropriate recognition and protection for heritage sites and trees through the District Plan.
- Encourage and support the installation of artwork, park furniture, planting and other features that illustrate local heritage values in the reserves.
- Encourage and support the holding of exhibitions, events and gatherings within the reserves that acknowledge and celebrate Swanson's cultural heritage.
- Implement a programme of specimen tree planting in the township reserves in order to enhance the existing landscape features and the amenity values of the reserves as well as providing shade and shelter.
- Utilise a range of specimen trees in the township reserves. Wherever possible, build on the existing framework of naturally occurring species and historical plantings.
- Encourage and support community participation in the planting and care of appropriate specimen and commemorative trees.

Policy 4.2.2

To recognize and protect all trees or vegetation of historic or ecological significance within the reserves and ensure that they are maintained in accordance with the standards and techniques of approved arboricultural practice.

Implementation

- Identify and record all trees of historic or ecological significance in the reserves, both exotic and native.
- Provide for the protection of all identified trees and vegetation of ecological significance through the provisions of the District Plan.
- Implement the Council's draft Tree Strategy as appropriate in the reserves.
- Ensure that walkways and other structures are kept clear of the roots of significant trees or vegetation, where those trees are vulnerable to damage.
- Replace any amenity or specimen trees that are dead, dying or posing any hazard as appropriate in accordance with the Parks Standards and management policies.
- Undertake a programme of specimen tree planting in Swanson Scenic Reserve to improve the amenity value of the reserve and provide shade in the open grass area.

5.0 Access and Circulation

One of the key issues arising from submissions to the Swanson Reserve Management Plan is that of poor access to and between the 'Green Network' reserves. In particular, Awhiorangi, Welsh Hills and Kitewaho(s) are isolated bush reserves in the upper catchment, largely unmarked and inaccessible to the local community. While this has had beneficial effects for the native flora and fauna in the reserves, the negative effects are boundary encroachments from neighbours and lack of community ownership and use. There are also important issues that arise relating to the future development of access and circulation in and through Crows Park, Kay Road, Swanson Esplanade Reserve and Swanson Scenic Reserve.

Objective

To minimize obstacles to free access and circulation throughout the reserves without compromising the natural or recreational values of the reserves.

Policy 5.1

To improve pedestrian access to and between the reserves.