



PROJECT TWIN STREAMS WALK AND CYCLEWAY
2005-2006 PROJECT

- UPPER WAIKUMETE WALK AND CYCLEWAY
- - - PROPOSED ALTERNATE ROUTES
- PROPOSED FOOTBRIDGE
- EXISTING ACCESS PATHS & BRIDGES
- EXISTING STREAMS

NOTE: BASE AERIAL PHOTO TAKEN IN 2000

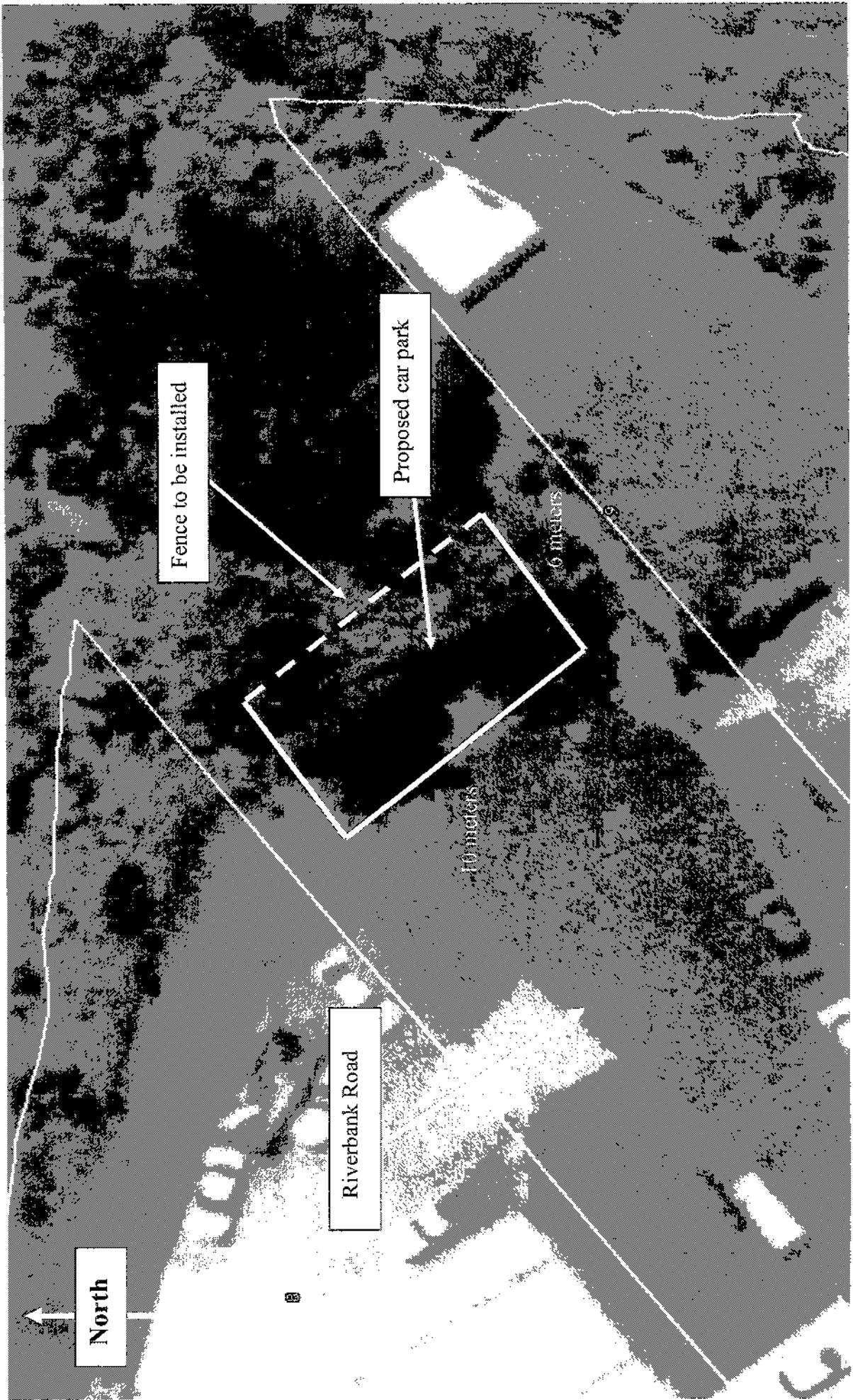
DESIGNED PB	DATE 01/07/05
DRAWN CS	DATE 01/07/05
CHECKED	DATE
APPROVED	DATE

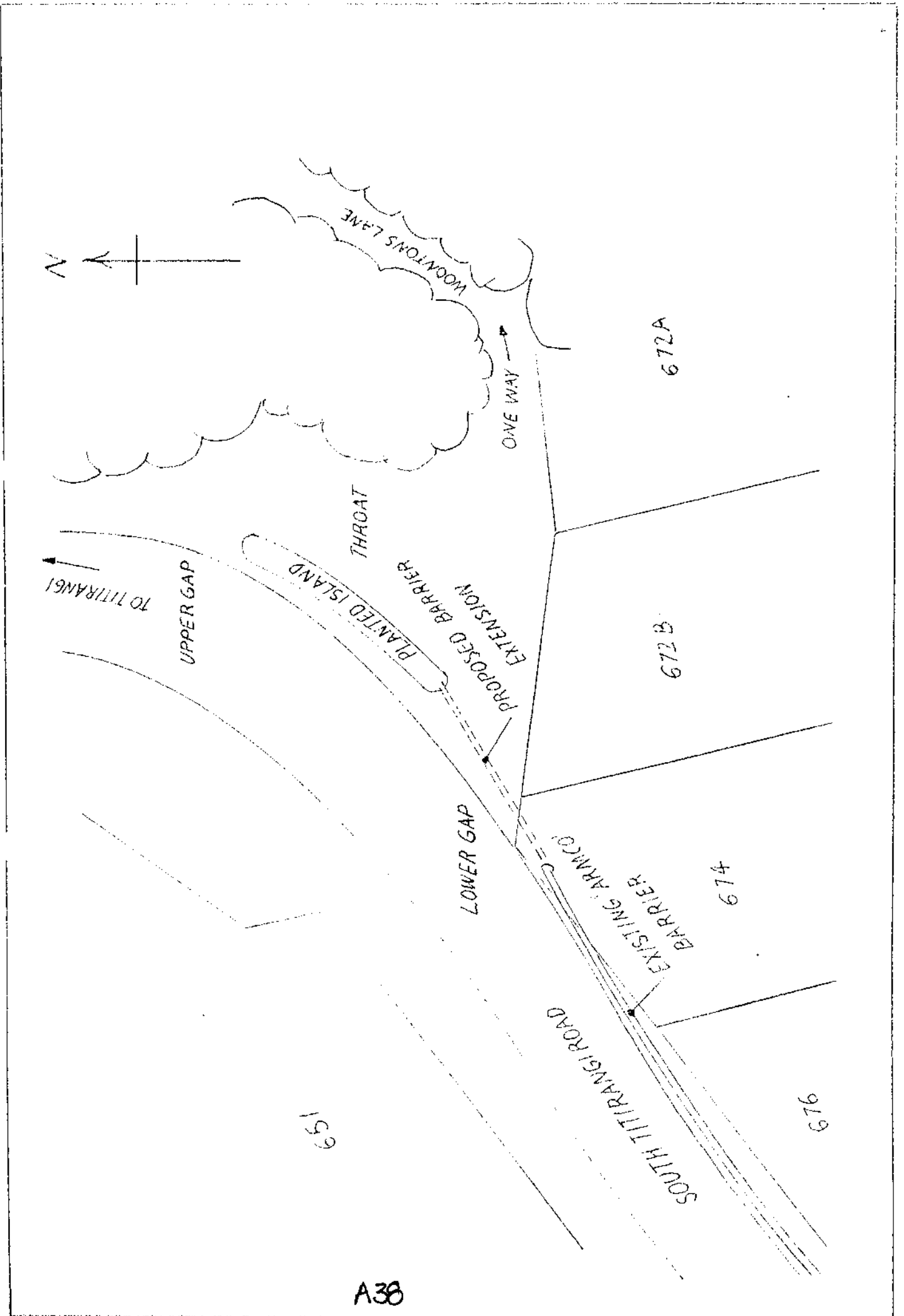
SYNERGINE
SYNERGINE GROUP LTD
PO BOX 8000 SYMONDS ST
AUCKLAND NEW ZEALAND



**PROJECT TWIN STREAMS
WALK & CYCLEWAYS**
UPPER WAIKUMETE
PRELIMINARY

A1 SCALE	A3 SCALE 1:2500
CAD ARCHIVE Upper Waikumete A1-2.dwg	DATE 02/08/05
DRAWING NO. A2-1	REVISION D





Olympic Park Stream Restoration

Landscape Concept Plan

PLANT SCHEDULE

Species	Common Name
Wetland (South)	
<i>Baumea rubiginosa</i>	
<i>Eleocharis acuta</i>	sharp spike-sedge
<i>Schoenoplectus tabernaemontani</i>	kapungawha, lake clubrush
<i>Typha orientalis</i>	raupo
Wetland (North)	
<i>Eleocharis sphacelata</i>	kuta, bamboo spike-sedge
<i>Baumea articulata</i>	jointed twig rush
<i>Typha orientalis</i>	raupo
<i>Schoenoplectus tabernaemontani</i>	kapungawha, lake clubrush
Inanga Spawning Areas (Enhancement Planting)	
<i>Carex flagellifera</i>	manaia
<i>Carex lessoniana</i>	raulahi
<i>Carex virgata</i>	purei
<i>Cordyline australis</i>	cabbage tree, ti kouka
<i>Cortadena fulvida</i>	toetoe
<i>Juncus edgarae</i>	wi
<i>Schoenoplectus tabernaemontani</i>	kapungawha, lake clubrush
Immediate Stream Margins	
<i>Carex flagellifera</i>	manaia
<i>Carex lessoniana</i>	raulahi
<i>Carex virgata</i>	purei
<i>Cortadena fulvida</i>	toetoe
<i>Gahnia setifolia</i>	mapere
Regular Floodplain	
<i>Carex flagellifera</i>	manaia
<i>Carex lessoniana</i>	raulahi
<i>Carex virgata</i>	purei
<i>Cordyline australis</i>	cabbage tree, ti kouka
<i>Cortadena fulvida</i>	toetoe
<i>Cyperus ustulatus</i>	upoko langata, giant umbrella sedge
<i>Schoenoplectus tabernaemontani</i>	kapungawha, lake clubrush
Sheltered Floodplain	
Groundcover mix	
<i>Carex flagellifera</i>	manaia
<i>Carex lessoniana</i>	raulahi
<i>Carex virgata</i>	purei
<i>Cortadena fulvida</i>	toetoe
<i>Cyperus ustulatus</i>	upoko langata, giant umbrella sedge
<i>Schoenoplectus tabernaemontani</i>	kapungawha, lake clubrush
Scattered groups of mixed species	
<i>Carpodetus serratus</i>	gulaputawela
<i>Coprosma robusta</i>	karamu
<i>Cordyline australis</i>	cabbage tree, ti kouka
<i>Corynocarpus laevigatus</i>	karaka
<i>Dacrydium dacrydioides</i>	kahikatea
<i>Dysoxylum spectabile</i>	kohekohe
<i>Leptospermum scoparium</i>	manuka
<i>Phormium tenax</i>	harakeke, flax
<i>Sophora microphylla</i>	kowhai
<i>Syzygium maire</i>	maire tawake, swamp maire
<i>Vitex lucens</i>	puni
Moderate and steep sloped banks	
Groundcover mix	
<i>Astelia banksii</i>	kakeha
<i>Carex flagellifera</i>	manaia
<i>Carex lessoniana</i>	raulahi
<i>Cortadena fulvida</i>	toetoe
<i>Dianella nigra</i>	turulu
<i>Gahnia lacera</i>	tarangarara
<i>Gahnia setifolia</i>	mapere
<i>Habea stricta</i>	koromiko
Scattered groups of mixed species	
<i>Alectryon excelsus</i>	titoki
<i>Beilschmiedia tarairi</i>	taraire
<i>Coprosma arborea</i>	mamangi
<i>Coprosma robusta</i>	karamu
<i>Cordyline australis</i>	ti kouka, cabbage tree
<i>Corynocarpus laevigatus</i>	karaka
<i>Dysoxylum spectabile</i>	kohekohe
<i>Hohenia populnea</i>	houhere, lacebark
<i>Knighia excelsa</i>	rewarewa
<i>Kunzea ericoides</i>	kanuka
<i>Leptospermum scoparium</i>	manuka
<i>Meliclytus ramiflorus</i>	mahoe, whilaywood
<i>Myrsine australis</i>	mapou
<i>Phormium tenax</i>	harakeke, flax
<i>Podocarpus totara</i>	totara
<i>Sophora microphylla</i>	kowhai
<i>Vitex lucens</i>	puni

KEY

	LOOKOUT STRUCTURE
	INDICATIVE BOARDWALK ROUTE
	WALKWAY
	IMMEDIATE STREAM MARGIN (2M WIDTH)
	FLOOD PLAIN
	SHELTERED FLOOD PLAIN
	WETLAND
	MODERATE/STEEP SLOPES
	INANGA SPAWNING GROUND

OLYMPIC PARK - NEW LYNN

STREAM RESTORATION CONCEPT PLAN

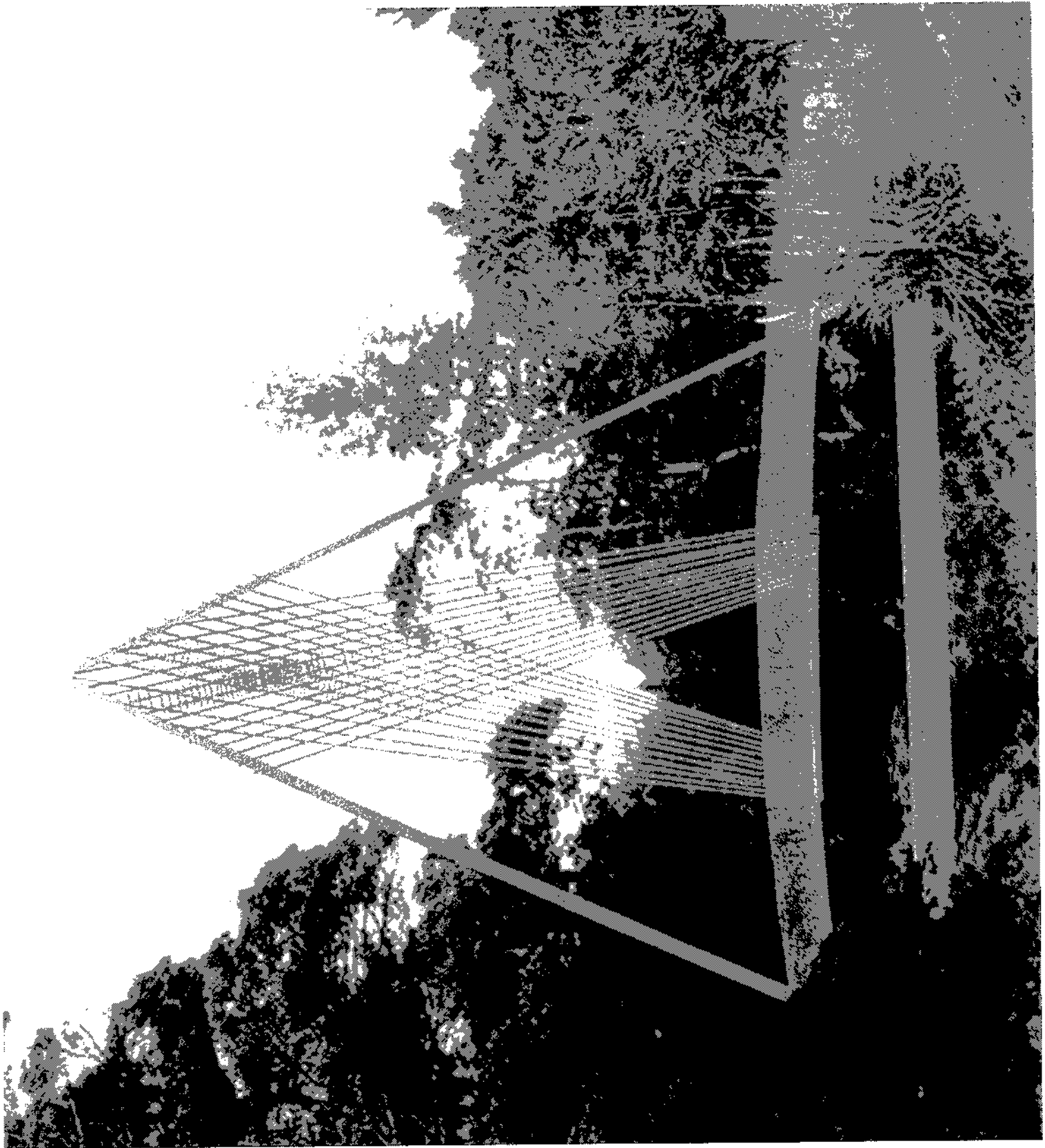
WAITAKERE CITY COUNCIL

SEPTEMBER 2005

SCALE 1:1000 @ A3

Wildland
CONSULTANTS
Ph 0508-WILDNZ www.wildlandnz.co.nz

Registered NZ LLA
Landscape Architect



A40