

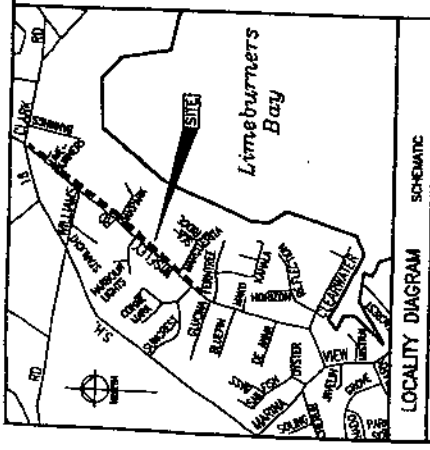
▲ AS BUILT ▲ FOR COMPLETION

SCHEME PLAN
SHEET NUMBER

DATE	BY	CHKD
PROJECT NO.	DATE	BY
PROJECT NAME	DATE	BY
PROJECT NO.	DATE	BY
PROJECT NAME	DATE	BY
PROJECT NO.	DATE	BY
PROJECT NAME	DATE	BY

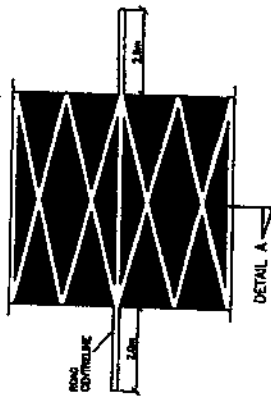
WISELEY ROAD TRAFFIC CALMING
 Revised Implementation Plan December 2005
 For Ratification by Board February 2006

ORIGINAL SCALE	AS NOTED
SHEET NUMBER	2
PROJECT NUMBER	14653
DATE	12/05
BY	TADP/LSJ
CHKD	AV

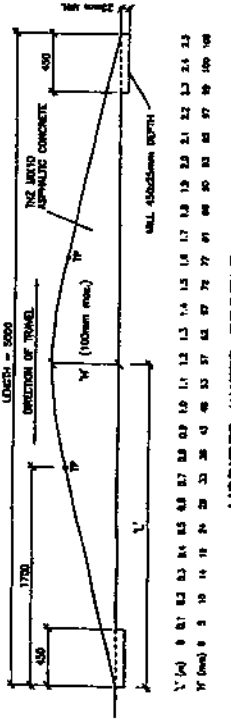


LOCALITY DIAGRAM SCHEMATIC

- NOTES:
1. Owners must be carefully constructed to match a full size template to the Modified Watts Profile dimensions.
 2. Heavy traffic edge must not enter the channel of the curb & channel.
 3. Heavy edges must be laid into existing surfaces not less than 25mm. Additional markings must be 150mm wide cylindrical with end at 150mm.
 4. To ensure visibility this road layout should be treated with a pattern which should appear as a shadow cast at the top of the curb and from above, with the top point on the side of the curb. The lamp is maximum 3.0m on the curb side of the curb.
 5. Signs shall be installed and installed in accordance with 'TYPICAL OF TRAFFIC SIGNS AND MARKINGS - PART 1: TRAFFIC SIGNS'.
 6. Sign posts, brackets and stems shall be per standard drawings SO 332 to SO 337.
 7. Positions of speed humps are indicative only. Council reserves the right to amend accordingly.

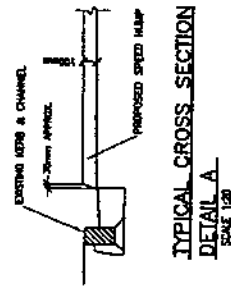


ROAD MARKING SCHEMATIC
DETAIL A

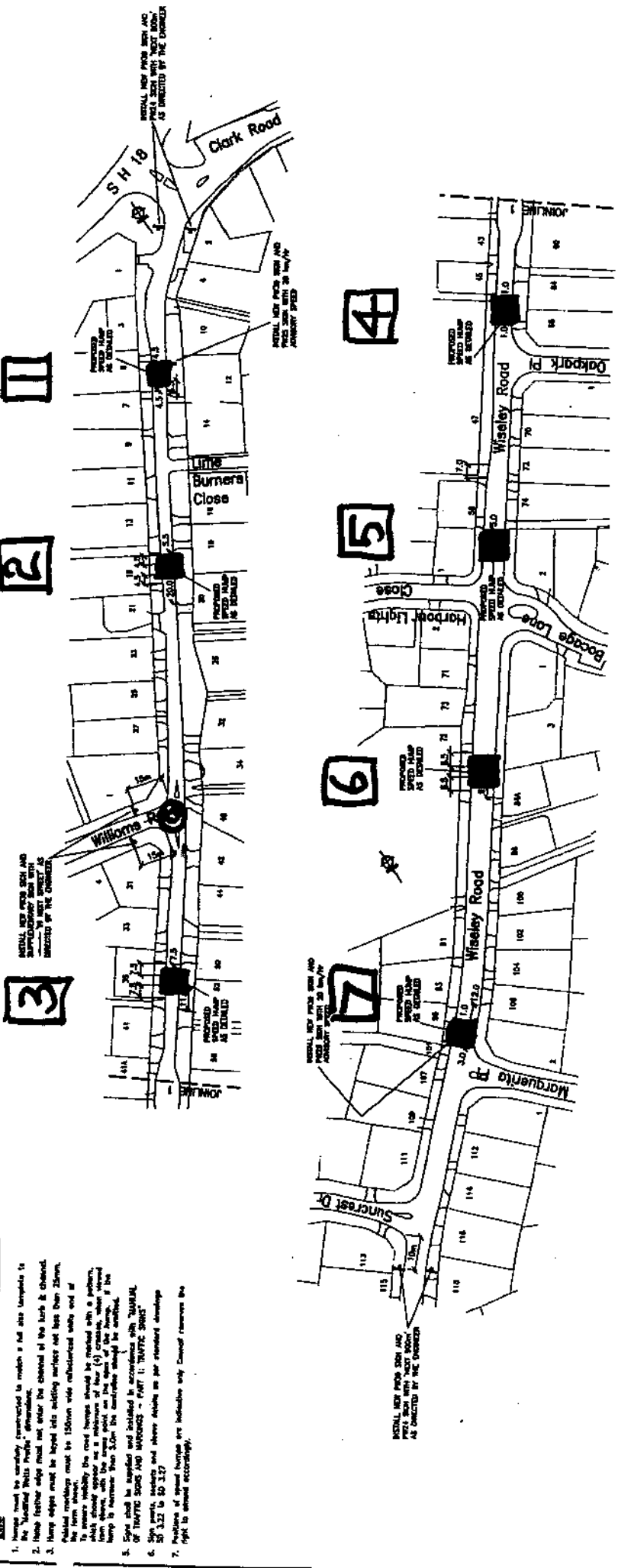


MODIFIED WATTS PROFILE

NOTE: TEMPLATE MUST BE USED IN CONSTRUCTION TO ENSURE SHAPE SPECIFIED.



TYPICAL CROSS SECTION DETAIL A
SCALE 1:20



FOR CONSTRUCTION

WISELEY ROAD TRAFFIC CALMING

Implementation Plan Provided to Wisley Road Residents December 2005
Prior to Construction

DATE	BY	DATE	BY
10/04	W	10/04	W
10/04	W	10/04	W
10/04	W	10/04	W

FINAL SCALE 1:1000	REVISION
DRAWING NO. 14653	AY
CONTRACT NO. TAO4531	



LINCOLN - RATHGAR #8
 BUDGET \$95,000
 COMMON BUS
 STOPPING
 FACILITIES
 AT THIS STAGE

LINCOLN RATHGAR #1
 CROSSING FACILITIES
 OUTSIDE 51 DOMINICKS
 COLLEGE ON RATHGAR
 ROAD

LINCOLN - RATHGAR #7
 BUDGET \$12,000
 FOOTPATH WIDENING
 ALONG RATHGAR ROAD

LINCOLN - RATHGAR #2
 BUDGET \$11,000
 CONSTRUCTION OF A
 BUS SHELTER ALONG
 RATHGAR ROAD

LINCOLN RATHGAR #1
 CROSSING FACILITIES
 OUTSIDE WAITAKERE
 COLLEGE TO BE SHIFTED
 TO MORE APPROPRIATE
 LOCATION

LINCOLN - RATHGAR #1
 TOTAL BUDGET FOR ALL
 THREE PROJECTS
 \$36,000

LINCOLN - RATHGAR #4
 BUDGET \$12,000
 PEDESTRIAN CROSSING OUTSIDE LUSTON
 COLLEGE. ALSO REQUIRED ARE SIGNAGE AND
 MARKING IMPROVEMENTS. EXTENSION OF
 YELLOW LINES NEAR THE SCHOOL ENTRANCE. #
 INVESTIGATE THE IMPROVEMENT OF VISIBILITY
 OF THE NO PARKING SIGNS

LINCOLN RATHGAR #1
 PEDESTRIAN CROSSING ON
 RATHGAR ROAD TO BE
 CHANGED TO A PAVED
 PLATFORM CROSSING

LINCOLN - RATHGAR #5
 BUDGET \$95,000
 DESIGN AND EXTEND EXISTING
 PARKING BAYS ALONG TOMARA
 ROAD. INVESTIGATE OPTION OF
 FULL CARRIAGEWAY WIDENING WITH
 MARKED PARKING LANES

LINCOLN RATHGAR #6
 BUDGET \$35,000
 NEW PARKING BAYS ALONG THE
 SOUTHERN SIDE OF NORVAL ROAD

DESIGNED CS	DATE 18/01/06	 Waitakere City Council <i>To Teitahi o Waitakere</i>	WAITAKERE CITY COUNCIL ROAD SAFETY IMPROVEMENTS LINCOLN - RATHGAR SCHOOLS SCHOOL TRAVEL PLAN IMPLEMENTATION OVERALL SCHEME	AS SCALE	AS SCALE	JOB NO.
DRAWN CS	DATE 18/01/06			1:5000	1:5000	7238A
CHECKED	DATE	LINCOLN - RATHGAR V2.DWG DRAWN BY 051-2		SECTION	A	
APPROVED	DATE					

Draft Waitakere City Leisure Facility Partnership Policy

**Draft
Waitakere City Leisure Facility Partnership Policy**

Draft Waitakere City Leisure Facility Partnership Policy

1.0 Introduction

The Leisure Facility Partnership Policy is a mechanism to enable Waitakere City to strategically direct capital development assistance to community leisure and sporting projects. In order to qualify for assistance, community projects must meet a series of evaluation criteria. These criteria are aligned with the objectives of core Council strategies and policies such as the Waitakere City Council Leisure Strategy, Waitakere Parks and Open Space Strategy and the Draft Policy and Guidelines for Council Investment in Significant New Formal Relationships.

Waitakere City has a diversity of community organisations which provide a wide range of leisure and sporting opportunities to the community. Many of these organisations depend on built facilities to assist their operations. Increasingly organisations have turned to Council seeking support for either new building initiatives or refurbishment projects.

Traditionally Council responded to such capital development requests on an ad hoc basis. This raised the potential risk that worthy projects may have gone unsupported for the simple reason that they were presented before Council at an inopportune time.

By establishing the Leisure Facility Partnership Policy and moving away from the historic ad hoc approach to funding projects Council is able to compare potential projects and support those that are most strategically beneficial to the community.

2.0 Strategic Context

When developing new partnerships or relationships, Council needs to ensure that its requirements under the Local Government Act 2002 and best practice relating to good decision making and governance are followed. This means reflecting the Office of the Auditor General's (OAG) principles of good governance. These principles involve establishing:

- A clearly defined purpose.
- An effective governing body or agreement.
- Clear roles and responsibilities for all parties.
- An accountable entity.
- An accountable Council.

All Leisure Facility Partnership proposals must also align with Council's strategic platforms and priorities. Partnership proposals which do not align with Council's strategic direction will not be supported.