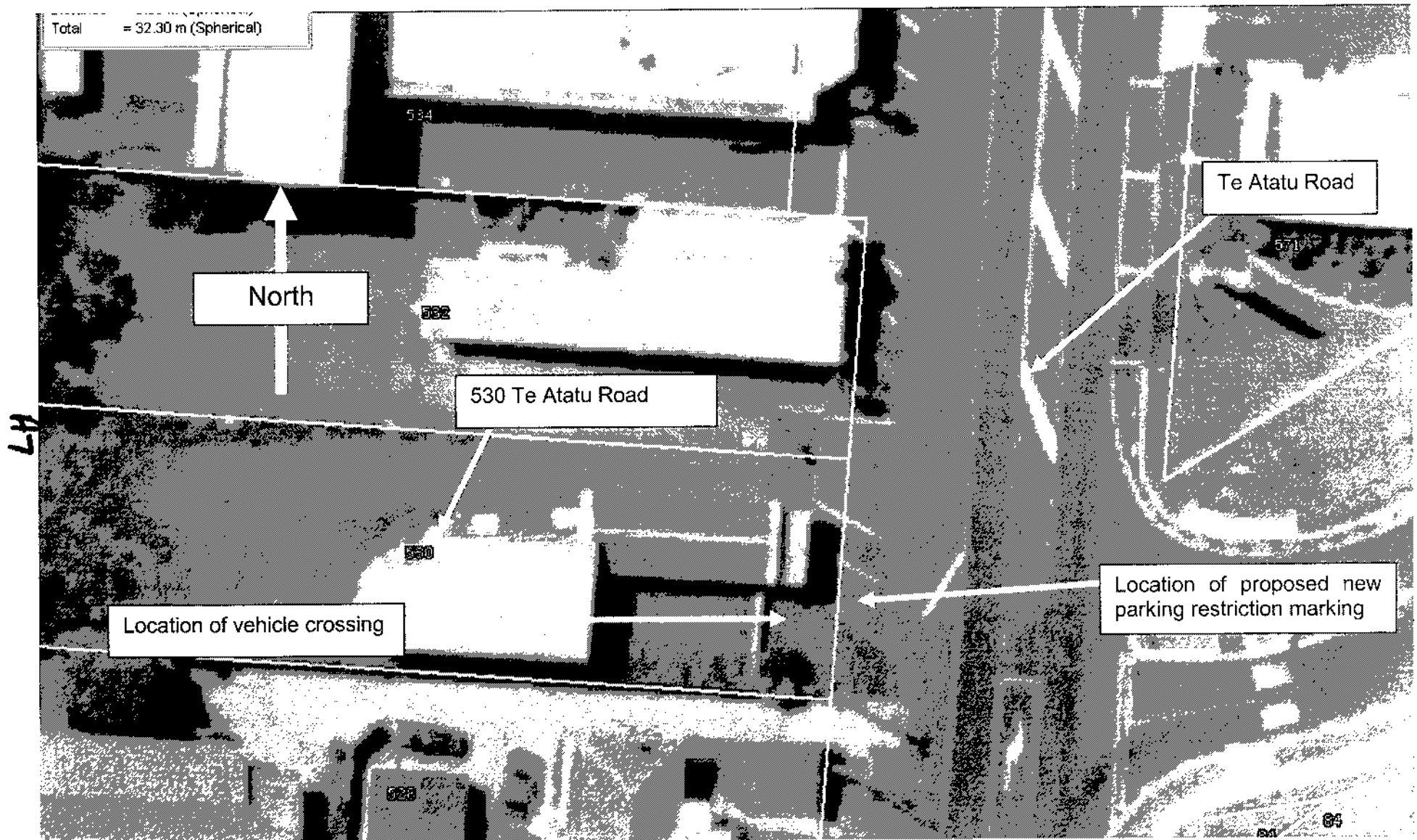
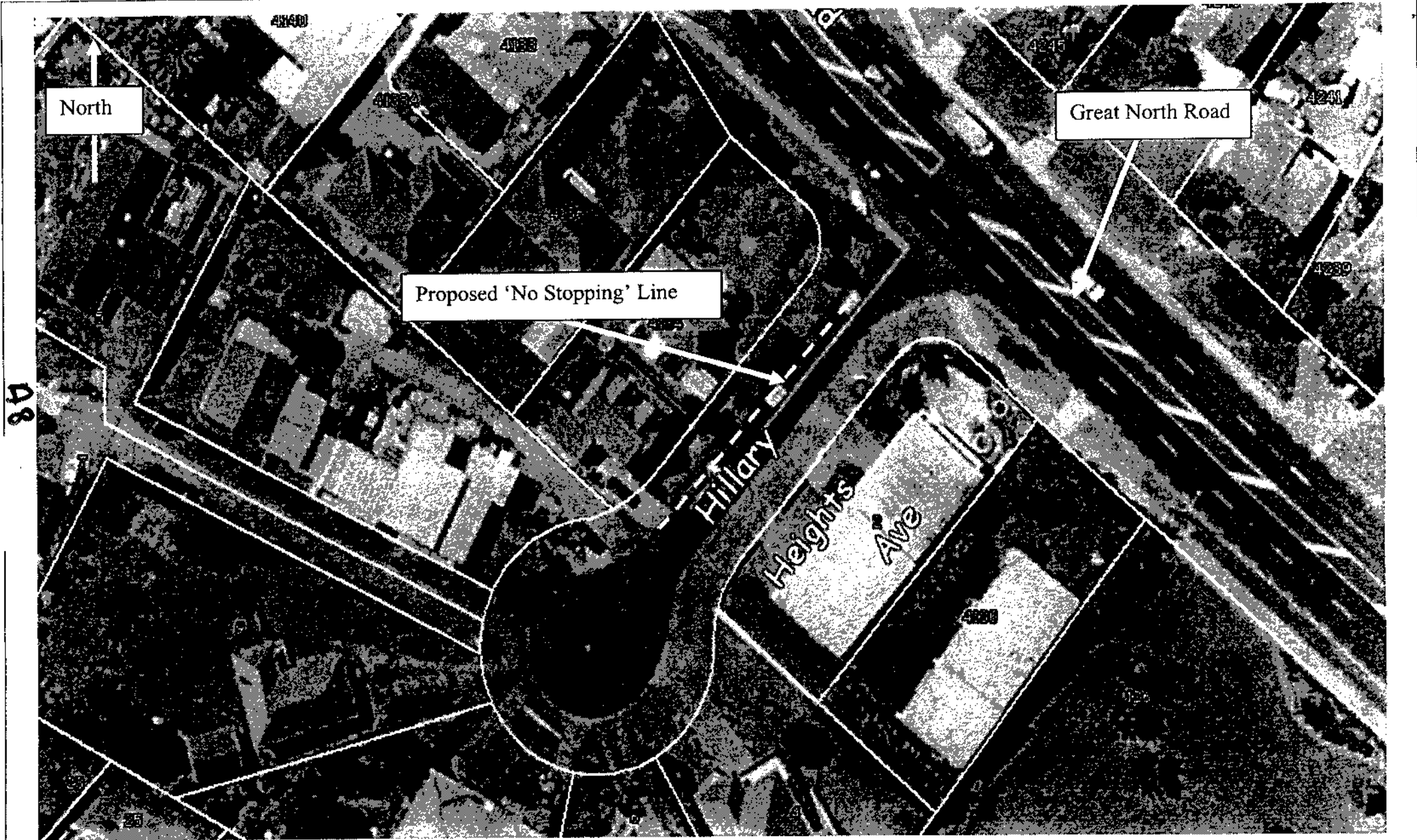




Please note that this photo was taken in March 200 before the land between Old Te Atatu Road and Te Atatu Road was developed.



Please note that this photograph was taken in March 2000 before the new real estate agents office was constructed.



TUI GLEN WAITAKERE COMMUNITY RESOURCE CENTRE

Stage One

14 Offices

3 x WADCOSS (Community Waitakere) offices
2 x single occupancy offices
9 x double occupancy offices

Of the 9 double occupancy offices 4 of them will have the ability to be opened out into a larger office space, using sliding partitions, allowing organisations to grow.

There will be a mixture of permanent tenants and non-permanent (up to three years) tenants. The permanent tenants will have a higher rental which will increase by approximately 5% each year in line with inflation.

In the tenants' office area is a kitchen and two seating areas, as well as toilets and shower space. This means that they are separated from the people hiring the meeting spaces and gives more security to the area.

5 meeting rooms

3 x large meeting rooms
2 x small meeting / interview rooms

The 3 large meeting rooms will be divided by movable partitions, allowing the area to be made into one large room or one larger room and one smaller room.

There will be kitchen facilities at one end of this area and we are exploring the option of providing tea making facilities in the room at the opposite end.

The meeting room area has the ability to be closed off from the rest of the Centre, giving security to the office area when not occupied, i.e. over the weekends and at night.

The meeting room area also has toilet facilities and an extra area for the purpose of being fitted out as a kitchen for a Café at a later stage, but in the interim will be used as extra meeting space.

Central Hub

As is in the current Resource Centre, this central hub is a mini meeting area. It will also have internet connections for people to 'hot-desk' for short periods of time. The internet time will be purchased, much like the 'internet cafés' around the City.

In this area there will be a Library to house research and resource material, a Resource Room with the photocopier, fax etc and the WADCOSS (Community Waitakere) offices.

Stage Two

9 offices

Double occupancy offices, which will be added at a later stage.

Café

WADCOSS (Community Waitakere) would be looking for an individual or organisation to take this on and fit out the area set aside for this purpose.

The café would be open to the public, with outside, covered seating opening into the Reserve itself.

AIO