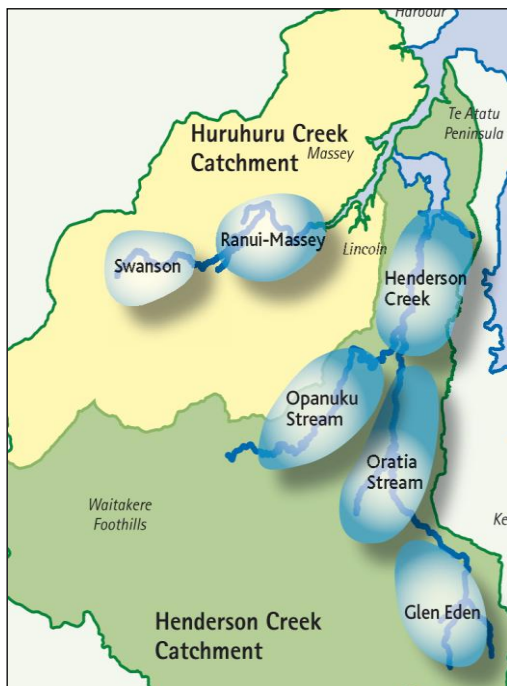




# Project Twin Streams:

## Key facts & figures

1. There are now (late 2007) five community contracts in place covering the majority of the catchment. Swanson residents are resourced to plant and maintain specific areas.
2. The catchment covers the Oratia, Waikumete, Opanuku, Pixie and Swanson Streams and incorporates 56km of stream banks, 10,000 hectares, 43,000 households and 103,000 people.



**Project Twin Streams catchment & contract areas**

3. Since the project commenced in 2004, over 10,000 volunteers have been involved in weeding and planting stream banks
  4. There is active participation by a diverse range of groups, cultures and schools from local communities through adopting areas of the stream. These include: 15 schools, five alternative education groups, local churches; sporting clubs, people with intellectual disabilities; a retirement village, Department for Corrections Community Work Programme and local residents.
  5. A total of 24 community planting and celebrations days have been held. These attract a diverse range of local residents – in particular young families with children.
6. A total of 309,671 trees have been planted within the catchment area. Throughout their lifetime, these trees will absorb the carbon from 13,458 cars doing 15,000km per year
  7. 75 houses have been purchased for stormwater management and riparian planting
  8. 14 km of cycle and walkways are under construction. These pathways, which will connect people with each other and their natural environment, will include art tiles depicting local flora, fauna, cultural and iwi stories, educational signs and a demonstration area for permeable paving.
  9. The project has received national and international recognition through awards, nominations and invited presentations.

*Project Twin Streams is funded by Auckland Regional Holdings (a division of ARC) together with contributions from Waitakere City Council. For the period 2003 – 2007 the project received Sustainable Communities (a work strand of Sustainable Auckland) funding.*