

SWANSON PLEASURE PARK.

16 Miles.

THIS is a pleasure park which provides a large playing area and is specially suited to larger picnics. The ground is surrounded by native bush, and includes a running stream. Provisions, hot water and refreshments can be obtained. A small charge is made.

Map Reference, D 3. Metalled Road.

TUI GLEN.

12 Miles.

THIS is one of the most up-to-date private motor camp and picnic grounds in the Dominion. Situated close to Henderson, it covers an area of over twelve acres, but is available only to the occupants of private motor cars or motor cycles. Amongst the various attractions are: Swimming appointments, shower baths, spring board, diving shoot, boats, canoes, quoits, tennis courts, deck bowls, putting green, swings, sec-saws, children's sand pits, with buckets and spades, ocean wave and free donkey rides for children, skittles, tobogganing, etc. Wireless installed.

There are numerous fireplaces under cover, tables and seats, plenty of firewood, water laid on, and electric light in the grounds; ladies' and gentlemen's dressing rooms with up-to-date conveniences, hot bath, electric iron, etc., etc.

Milk and various food supplies can be purchased on the ground. A charge is made of 4/- per car per day of 24 hours, or 2/6 per afternoon.

Map Reference, D 4. Concrete Road.

DREAMLANDS ROAD.

15 Miles.

TURNING off the Henderson Valley Road, between Ferndale and Sharp's Bush, a route runs up towards the top of the Waitakere Ranges. There is beautiful bush scenery and some particularly fine specimens of big native trees.

Map Reference, E 3. Unmetalled Road.

FALLS PARK (Henderson).

11 1/4 Miles.

THIS is a fine reserve, situated just on the southern side of Henderson, and close to Tui Glen. On the banks of the stream, fern and native bush provide delightful shelter for a picnic. There is good swimming in the deep pool beneath the falls. Hot water and light refreshments are obtainable, and fresh water is laid on. There are dressing sheds, swings, etc.

Map Reference, D 4. Metalled Road.

CORNWALLIS.

19 Miles.

SITUATED on the Manukau Harbour, Cornwallis Beach provides safe bathing when the tide is full. Fresh water in the streams, and good shelter. Stores, hot water, good fishing.

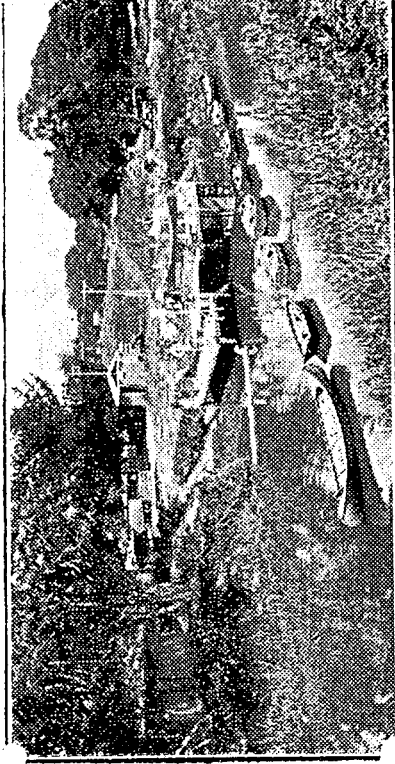
Map Reference, F 4. Unmetalled Road.

HUIA.

21 Miles.

IT is quite a pleasant run to Huia, and there is excellent shelter. Good bathing when the tide is in. The road onwards from Huia is not in good order for cars. A track extends past Huia to Whatipu, near the Manukau Heads, where there is a delightful seaside bay.

Map Reference, F 3. Half-mile Unmetalled Road.



A Corner of Tui Glen.