

no info re

Tui Glen on market? Offers reach Council

Recent offers for Tui Glen, Henderson's motor camp off Edmonton Road, could lead to the borough council seeking clearance from the Commissioner of Crown Lands to sell or lease it.

The Motor camp, New Zealand's oldest, is costing the borough more than \$70 a week, brought about by a fall in revenue and repayments on the loan which was raised shortly after the council decided to purchase it following stormy argument and debate.

The council's parks committee, after discussing recent inquiries about Tui Glen from clubs and individuals, has recommended that the council approach the Commissioner of Crown Lands to see what legal steps would be required in the event of sale or leasing.

ONCE A GARDEN

Tui Glen's history began in 1911 when it was discovered by a city engineer Mr Claude Brooks.

He liked it so much that he decided to use it as a summer residence. After purchasing it in 1912 he and his family started clearing the land and planting shrubs and trees.

The family decided to transport their home up the Oratia Stream to Tui Glen in two sections.

At Shelly Point off Te Atatu one section of their home was sunk with the barge which carried it. Despite this, the family eventually established a home.

In 1915, Mr Brooks bought an adjoining 15 acres from a Mr Carter. The Brooks family moved into the Carter home - still in use as the manager's residence.

The years that followed saw Tui Glen take on a new mantle and people began to regard it as a pleasant picnic spot.

Mr Brooks wisely made

Tui Glen contribute towards its upkeep by selling apples from its orchard which he took to the cool store in Freemans Bay.

CABINS USED

In the 1920's accommodation was provided at Tui Glen in a unique form - cabins of ships were placed in the grounds - hence the term cabin accommodation.

The first cabin came from the sailing ship Wanaka, soon followed by others including the master's cabin from the Wanaka.

The Glen achieved history in 1925 when it was registered as the first camping ground and picnic area in New Zealand.

The camp, according to older residents, had ponds, fountains, secluded walks and ornamental bridges.

In the years that followed the camp was considered one of Auckland's most outstanding scenic attractions.

Before World War II, the amenities were increased to include a beach and boating sheds, an amusement pavilion and enlargement of the picnic grounds.

SQUATTERS

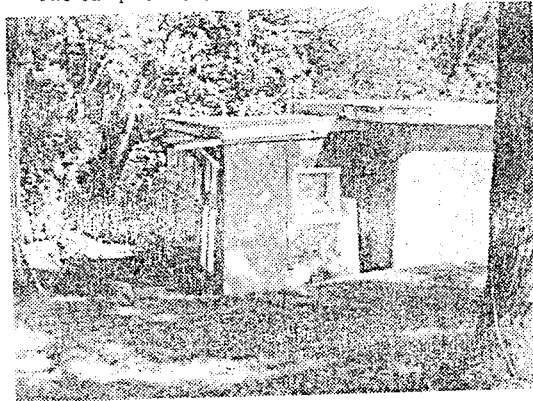
The spectacular success of Tui Glen was shadowed by the war and in 1945, Mr Claude Brooks disposed of the camp to a company known as Tui Glen Ltd.

The changeover was not made lightly, but Tui Glen

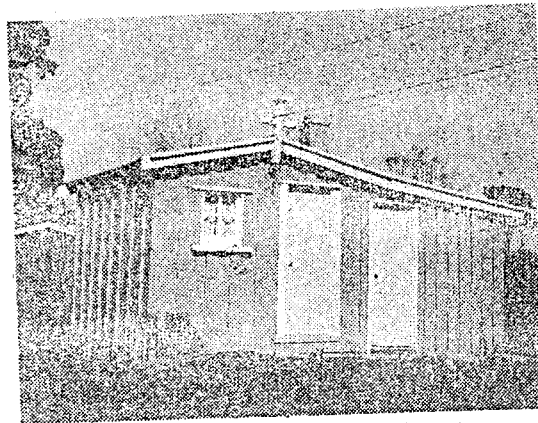
had not made any progress during the war. Squatters moved in and refused to shift even when their cabins were moved from under them.

Postwar development of the motor camp was limited because of restrictions, although a skating rink was added.

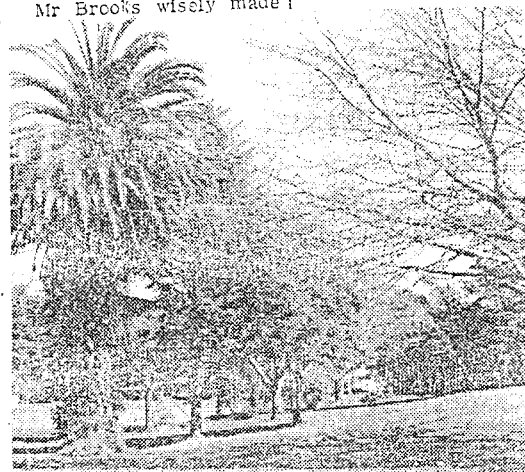
The camp owners decided



The master's cabin on the sailing ship Wanaka is now cabin accommodation for visitors to Tui Glen.



A common sight around New Zealand are huts, such as the one above, used by single men employees of the Ministry of Works and now by tourists at Tui Glen.



Stark wintry branches softened by tropical verdure provides botanists with a wealth of material at Tui Glen.



Henderson's sole amusement park for children is located at Tui Glen.

Western Leader
20 8 68

(see p. 167 for photo of skating rink)

Henderson - Wai glen